

V:\1937\Active\193704280\03_data\gis_cad\gis\mxd\ECO\Hedding Fulton_AEP_Figure2.mxd Revised: 2016-09-13 By: chellora



Figure No.
2

Title
Wetland and Waterbody Delineation Map

Client/Project
American Electric Power
Hedding Station - Fulton Station 138 kV
Transmission Line Rebuild Project

Project Location
Morrow County, Ohio

193704280
Prepared by HDB on 2016-08-24
Technical Review by MP on 2016-08-26
Independent Review by NN on 2016-09-02

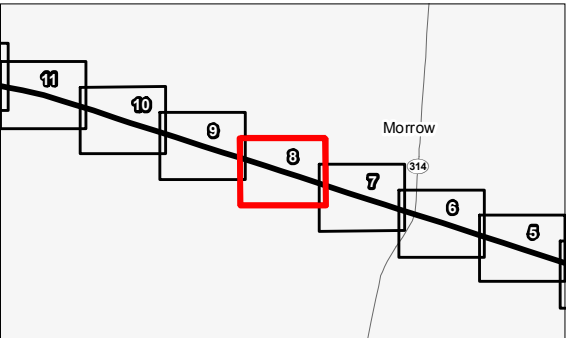
0 100 200 Feet

1:2,400 (At original document size of 11x17)

N

Legend

■ AEP Substation	Upland Drainage Feature
○ Structure to be Replaced	Approximate Upland Drainage Feature
— 138 kV Transmission Line	Open Water
- - - Access Road	FEMA Flood Zones
Project Area (100' ROW and 30' Access Roads)	100-year Flood Zone
Wetland Determination Sample Point	100-year Floodway
△ Existing Culvert	Approximate Wetland
Photo Location	Field Delineated Wetland
Field Delineated Waterway	Field Delineated Emergent Wetland
Approximate Waterway	Field Delineated Forested Wetland
	Field Delineated Scrub-Shrub Wetland



Notes

1. Coordinate System: NAD 1983 StatePlane Ohio North FIPS 3401 Feet
2. Data Sources Include: Stantec, AEP, NADS, FEMA, USGS, USFWS
3. Orthophotography: 2015 NAIP



V:\1937\Activa\193704280\03_data\gis_cad\gis\mxd\ECO\Hedding Fulton AEP_Figure2.mxd Revised: 2016-09-13 By: chbellora



Figure No.
2

Title
Wetland and Waterbody Delineation Map

Client/Project
American Electric Power
Hedding Station - Fulton Station 138 kV
Transmission Line Rebuild Project

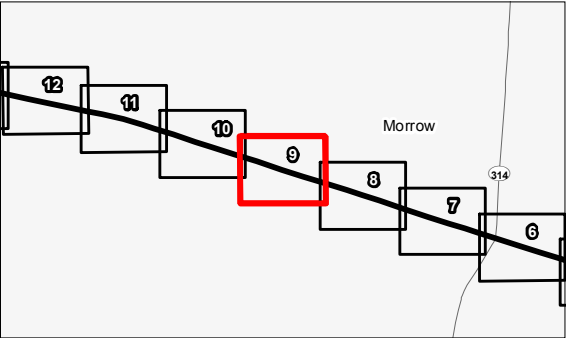
Project Location
Morrow County, Ohio

193704280
Prepared by HDB on 2016-08-24
Technical Review by MP on 2016-08-26
Independent Review by NN on 2016-09-02

0 100 200 Feet
1:2,400 (At original document size of 11x17)

Legend

■ AEP Substation	Upland Drainage Feature
○ Structure to be Replaced	Approximate Upland Drainage Feature
⚡ 138 kV Transmission Line	Open Water
— Access Road	FEMA Flood Zones
Project Area (100' ROW and 30' Access Roads)	100-year Flood Zone
Wetland Determination Sample Point	100-year Floodway
△ Existing Culvert	Approximate Wetland
📷 Photo Location	Field Delineated Wetland
Field Delineated Waterway	Field Delineated Emergent Wetland
Approximate Waterway	Field Delineated Forested Wetland
	Field Delineated Scrub-Shrub Wetland



Notes

1. Coordinate System: NAD 1983 StatePlane Ohio North FIPS 3401 Feet
2. Data Sources Include: Stantec, AEP, NADS, FEMA, USGS, USFWS
3. Orthophotography: 2015 NAIP



V:\1937\Activa\193704280\03_data\gis_cad\gis\mxd\ECO\Hedding Fulton AEP_Figure2.mxd - Revised 2016-09-13 By: chellora



Figure No.
2

Title
Wetland and Waterbody Delineation Map

Client/Project
American Electric Power
Hedding Station - Fulton Station 138 kV
Transmission Line Rebuild Project

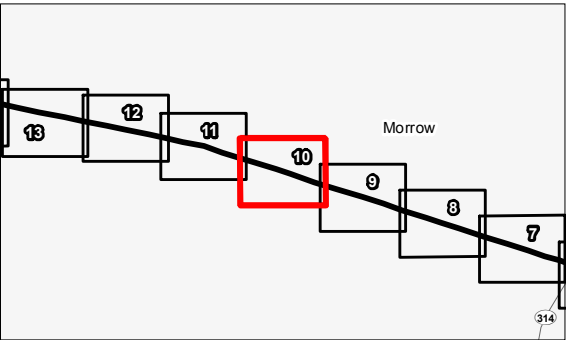
Project Location
Morrow County, Ohio

193704280
Prepared by HDB on 2016-08-24
Technical Review by MP on 2016-08-26
Independent Review by NN on 2016-09-02

0 100 200 Feet
1:2,400 (At original document size of 11x17)

Legend

■ AEP Substation	Upland Drainage Feature
○ Structure to be Replaced	Approximate Upland Drainage Feature
138 kV Transmission Line	Open Water
Access Road	FEMA Flood Zones
Project Area (100' ROW and 30' Access Roads)	100-year Flood Zone
Wetland Determination Sample Point	100-year Floodway
Existing Culvert	Approximate Wetland
Photo Location	Field Delineated Wetland
Field Delineated Waterway	Field Delineated Emergent Wetland
Approximate Waterway	Field Delineated Forested Wetland
	Field Delineated Scrub-Shrub Wetland



Notes

1. Coordinate System: NAD 1983 StatePlane Ohio North FIPS 3401 Feet
2. Data Sources Include: Stantec, AEP, NADS, FEMA, USGS, USFWS
3. Orthophotography: 2015 NAIP



V:\1937\Active\193704280\03_data\gis\cost\wet\wet\ECO\Hedding_Fulton_AEP_Figure2.mxd Revised: 2016/09/14 By: chellora

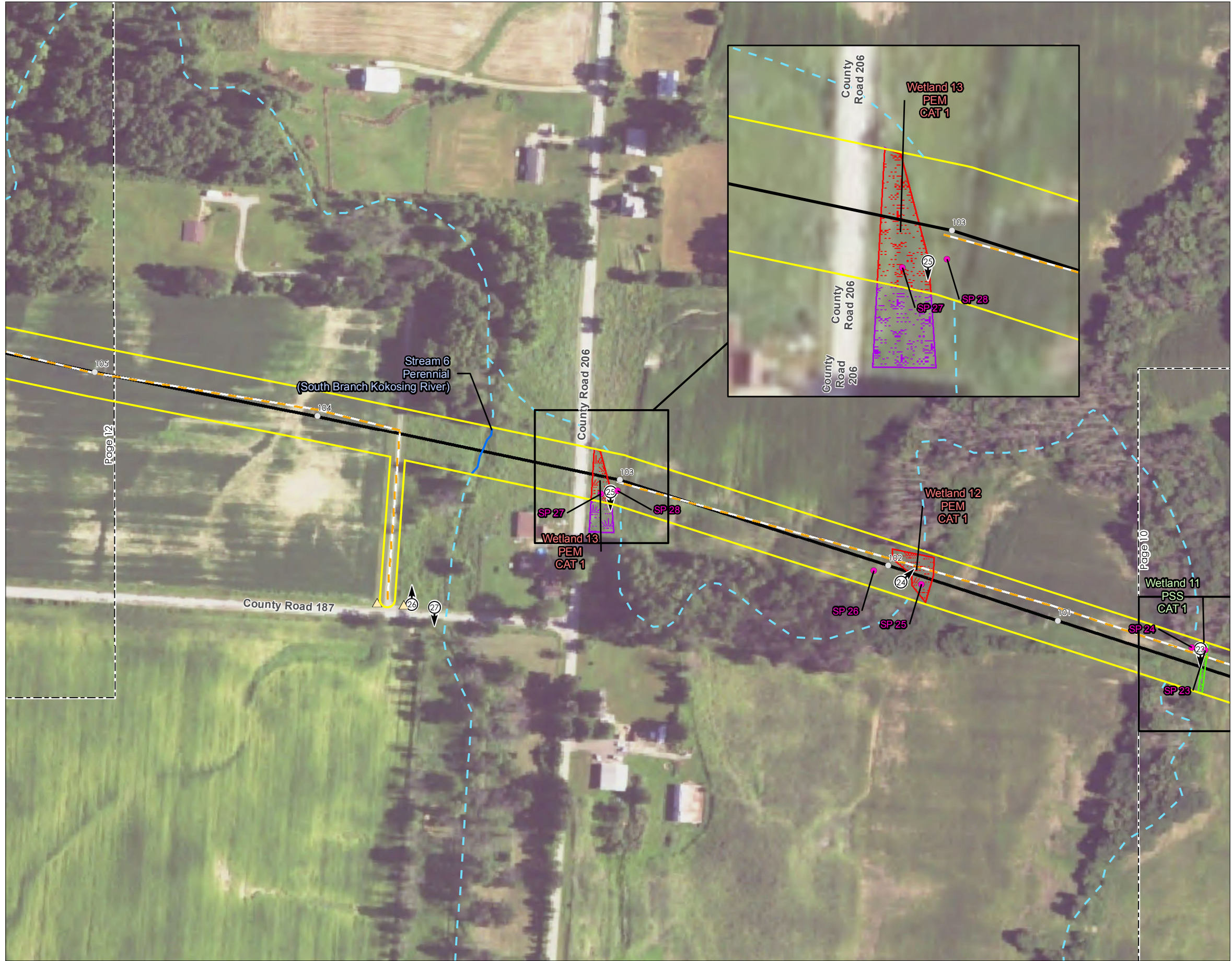


Figure No.
2

Title
Wetland and Waterbody Delineation Map

Client/Project
American Electric Power
Hedding Station - Fulton Station
138 kV Transmission Line Rebuild Project

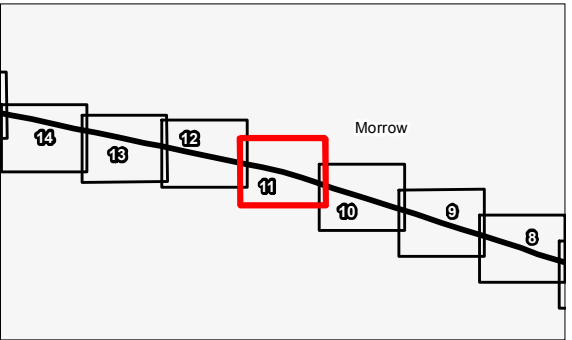
Project Location
Morrow County, Ohio

193704280
Prepared by HDB on 2016-08-24
Technical Review by MP on 2016-08-26
Independent Review by NN on 2016-09-02

0 100 200 Feet
1:2,400 (At original document size of 11x17)

Legend

■ AEP Substation	Upland Drainage Feature
○ Structure to be Replaced	Approximate Upland Drainage Feature
— 138 kV Transmission Line	Open Water
— Access Road	FEMA Flood Zones
□ Project Area (100' ROW and 30' Access Roads)	100-year Flood Zone
● Wetland Determination Sample Point	100-year Floodway
▲ Existing Culvert	Approximate Wetland
○ Photo Location	Field Delineated Wetland
— Field Delineated Waterway	Field Delineated Emergent Wetland
— Approximate Waterway	Field Delineated Forested Wetland
	Field Delineated Scrub-Shrub Wetland



Notes

1. Coordinate System: NAD 1983 StatePlane Ohio North FIPS 3401 Feet
2. Data Sources Include: Stantec, AEP, NADS, FEMA, USGS, USFWS
3. Orthophotography: 2015 NAIP





Figure No.
2

Title
Wetland and Waterbody Delineation Map

Client/Project
American Electric Power
Hedding Station - Fulton Station
138 kV Transmission Line Rebuild Project

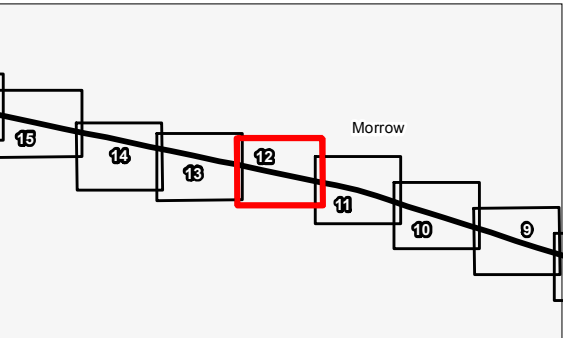
Project Location
Morrow County, Ohio

193704280
Prepared by HDB on 2016-08-24
Technical Review by MP on 2016-08-26
Independent Review by NN on 2016-09-02

0 100 200 Feet
1:2,400 (At original document size of 11x17)

Legend

■ AEP Substation	Upland Drainage Feature
○ Structure to be Replaced	Approximate Upland Drainage Feature
~ 138 kV Transmission Line	Open Water
— Access Road	FEMA Flood Zones
□ Project Area (100' ROW and 30' Access Roads)	100-year Flood Zone
● Wetland Determination Sample Point	100-year Floodway
▲ Existing Culvert	Approximate Wetland
○ Photo Location	Field Delineated Wetland
~ Field Delineated Waterway	Field Delineated Emergent Wetland
- - - Approximate Waterway	Field Delineated Forested Wetland
	Field Delineated Scrub-Shrub Wetland



Notes

1. Coordinate System: NAD 1983 StatePlane Ohio North FIPS 3401 Feet
2. Data Sources Include: Stantec, AEP, NADS, FEMA, USGS, USFWS
3. Orthophotography: 2015 NAIP





Figure No.
2

Title
Wetland and Waterbody Delineation Map

Client/Project
American Electric Power
Hedding Station - Fulton Station 138 kV
Transmission Line Rebuild Project

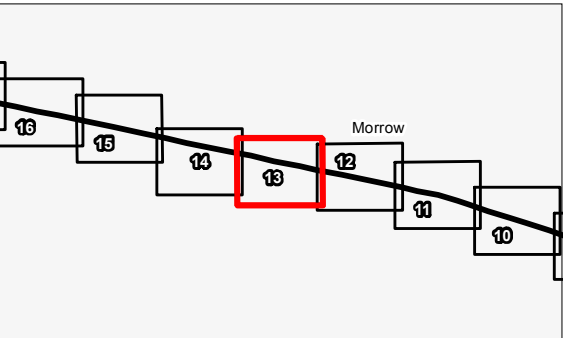
Project Location
Morrow County, Ohio

193704280
Prepared by HDB on 2016-08-24
Technical Review by MP on 2016-08-26
Independent Review by NN on 2016-09-02

0 100 200 Feet
1:2,400 (At original document size of 11x17)

Legend

■ AEP Substation	Upland Drainage Feature
● Structure to be Replaced	Approximate Upland Drainage Feature
— 138 kV Transmission Line	Open Water
- - - Access Road	FEMA Flood Zones
□ Project Area (100' ROW and 30' Access Roads)	100-year Flood Zone
Wetland Determination Sample Point	100-year Floodway
△ Existing Culvert	Approximate Wetland
📍 Photo Location	Field Delineated Wetland
Field Delineated Waterway	Field Delineated Emergent Wetland
Approximate Waterway	Field Delineated Forested Wetland
	Field Delineated Scrub-Shrub Wetland



Notes

1. Coordinate System: NAD 1983 StatePlane Ohio North FIPS 3401 Feet
2. Data Sources Include: Stantec, AEP, NADS, FEMA, USGS, USFWS
3. Orthophotography: 2015 NAIP



V:\1937\Activa\193704280\03_data\gis_cad\wet\mxd\ECO\Hedding Fulton AEP_Figure2.mxd Revised 2016-09-13 By: chellora



Figure No.
2

Title
Wetland and Waterbody Delineation Map

Client/Project
American Electric Power
Hedding Station - Fulton Station 138 kV
Transmission Line Rebuild Project

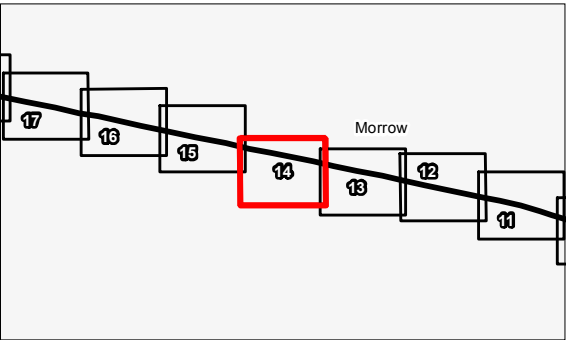
Project Location
Morrow County, Ohio

193704280
Prepared by HDB on 2016-08-24
Technical Review by MP on 2016-08-26
Independent Review by NN on 2016-09-02

0 100 200 Feet
1:2,400 (At original document size of 11x17)

Legend

■ AEP Substation	Upland Drainage Feature
○ Structure to be Replaced	Approximate Upland Drainage Feature
— 138 kV Transmission Line	Open Water
— Access Road	FEMA Flood Zones
Project Area (100' ROW and 30' Access Roads)	100-year Flood Zone
Wetland Determination Sample Point	100-year Floodway
△ Existing Culvert	Approximate Wetland
○ Photo Location	Field Delineated Wetland
Field Delineated Waterway	Field Delineated Emergent Wetland
Approximate Waterway	Field Delineated Forested Wetland
	Field Delineated Scrub-Shrub Wetland



Notes

1. Coordinate System: NAD 1983 StatePlane Ohio North FIPS 3401 Feet
2. Data Sources Include: Stantec, AEP, NADS, FEMA, USGS, USFWS
3. Orthophotography: 2015 NAIP



V:\1937\Activa\193704280\03_data\gis\cost\wet\wet\ECO\Hedding Fulton AEP_Figure2.mxd Revised: 2016-09-13 By: chellora



Figure No.
2

Title
Wetland and Waterbody Delineation Map

Client/Project
American Electric Power
Hedding Station - Fulton Station 138 kV
Transmission Line Rebuild Project

Project Location
Morrow County, Ohio

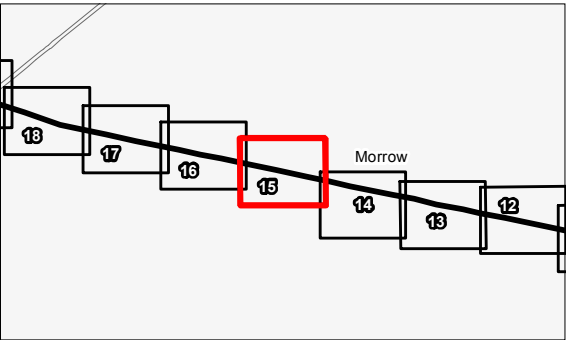
193704280
Prepared by HDB on 2016-08-24
Technical Review by MP on 2016-08-26
Independent Review by NN on 2016-09-02

0 100 200 Feet
1:2,400 (At original document size of 11x17)

N

Legend

■ AEP Substation	Upland Drainage Feature
○ Structure to be Replaced	Approximate Upland Drainage Feature
138 kV Transmission Line	Open Water
Access Road	FEMA Flood Zones
Project Area (100' ROW and 30' Access Roads)	100-year Flood Zone
Wetland Determination Sample Point	100-year Floodway
Existing Culvert	Approximate Wetland
Photo Location	Field Delineated Wetland
Field Delineated Waterway	Field Delineated Emergent Wetland
Approximate Waterway	Field Delineated Forested Wetland
	Field Delineated Scrub-Shrub Wetland



Notes

1. Coordinate System: NAD 1983 StatePlane Ohio North FIPS 3401 Feet
2. Data Sources Include: Stantec, AEP, NADS, FEMA, USGS, USFWS
3. Orthophotography: 2015 NAIP





Figure No.
2

Title
Wetland and Waterbody Delineation Map

Client/Project
American Electric Power
Hedding Station - Fulton Station 138 kV
Transmission Line Rebuild Project

Project Location
Morrow County, Ohio

193704280
Prepared by HDB on 2016-08-24
Technical Review by MP on 2016-08-26
Independent Review by NN on 2016-09-02

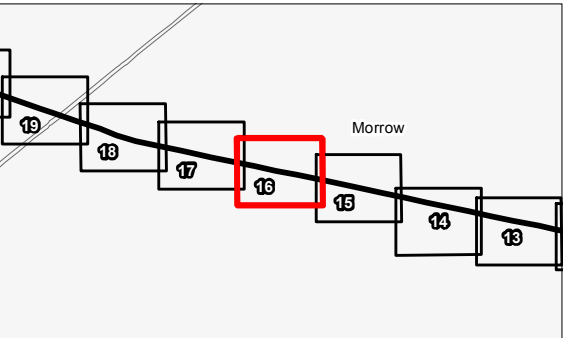
0 100 200 Feet

1:2,400 (At original document size of 11x17)

N

Legend

■ AEP Substation	Upland Drainage Feature
○ Structure to be Replaced	Approximate Upland Drainage Feature
138 kV Transmission Line	Open Water
Access Road	FEMA Flood Zones
Project Area (100' ROW and 30' Access Roads)	100-year Flood Zone
Wetland Determination Sample Point	100-year Floodway
Existing Culvert	Approximate Wetland
Photo Location	Field Delineated Wetland
Field Delineated Waterway	Field Delineated Emergent Wetland
Approximate Waterway	Field Delineated Forested Wetland
	Field Delineated Scrub-Shrub Wetland



Notes

1. Coordinate System: NAD 1983 StatePlane Ohio North FIPS 3401 Feet
2. Data Sources Include: Stantec, AEP, NADS, FEMA, USGS, USFWS
3. Orthophotography: 2015 NAIP



This foregoing document was electronically filed with the Public Utilities

Commission of Ohio Docketing Information System on

9/26/2016 2:06:42 PM

in

Case No(s). 16-1531-EL-BLN

Summary: Letter of Notification Part 18 electronically filed by Mr. Hector Garcia on behalf of AEP Ohio Transmission Company