



Figure 27. Fieldwork results and photo orientations for Sheet 19.





Figure 28. View of the surface collected area on sheet 1.



Figure 29. View of the conditions within the central portion of sheet 1.





Figure 30. View of a shovel tested area on sheet 1 and 2.



Figure 31. View of a wet area on sheet 2.





Figure 32. View of the surface collected soybean field on sheet 2.



Figure 33. View of the surface collected soybean field on sheet 3.



Figure 34. View of the wet area on sheet 3.



Figure 35. View of the surface collected soybean field on sheet 3 and 4.





Figure 36. View of the shovel tested area on sheet 4.



Figure 37. View of a wet area on sheet 5.





Figure 38. View of the disturbed conditions on sheet 5.



Figure 39. View of a shovel tested area on sheet 5.





Figure 40. View of the conditions on sheet 6.

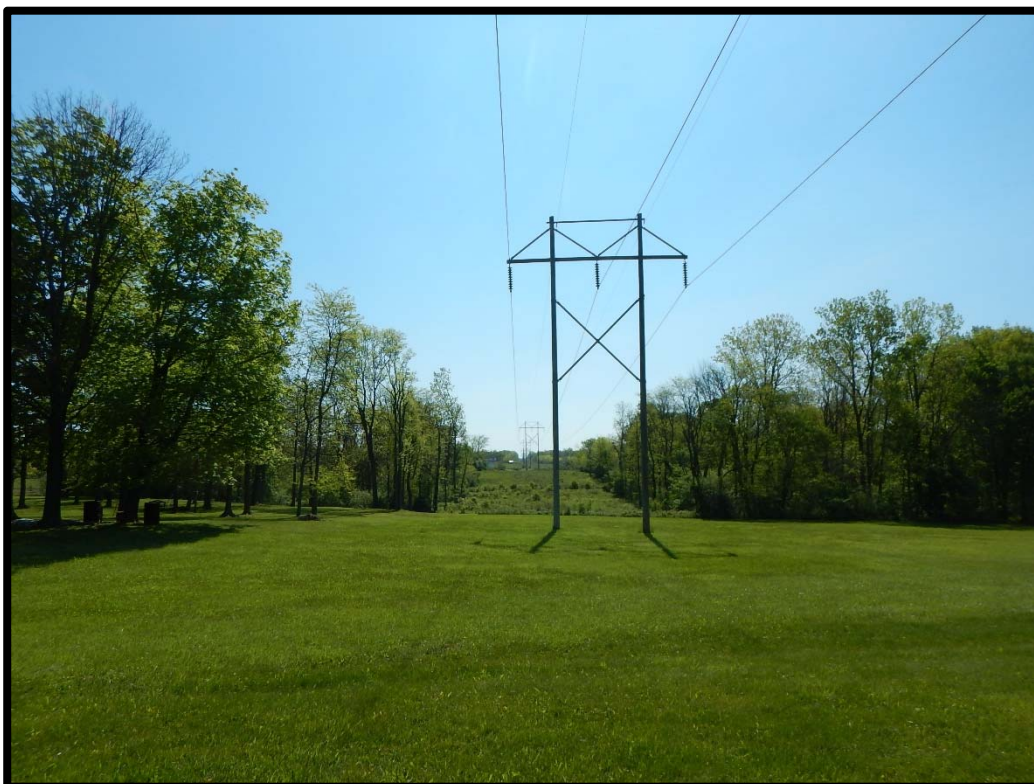


Figure 41. Another view of the conditions on sheet 6.





Figure 42. View of the surface collected area on sheet 7.



Figure 43. View of a shovel tested area on sheet 7.





Figure 44. View of some of the conditions on sheet 8.



Figure 45. View of a shovel tested area on sheet 8.





Figure 46. View of some of the wet conditions on sheet 9.



Figure 47. View of some of the conditions on sheet 9.





Figure 48. View of the surface collected soybean stubble field on sheet 10.



Figure 49. View of a shovel tested area on sheet 10.





Figure 50. View of a surface collected field on sheet 11.



Figure 51. View of a surface collected field on sheet 11.





Figure 52. View of a shovel tested area on sheet 12.



Figure 53. View of a wet area on sheet 12.





Figure 54. View of some of the conditions on sheet 13.



Figure 55. View of some of the conditions on sheet 13.



**This foregoing document was electronically filed with the Public Utilities**

**Commission of Ohio Docketing Information System on**

**9/26/2016 1:55:50 PM**

**in**

**Case No(s). 16-1531-EL-BLN**

Summary: Letter of Notification Part 9 electronically filed by Mr. Hector Garcia on behalf of AEP Ohio Transmission Company