



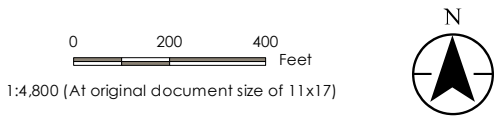
Figure No.
1.2

Title
Project Layout Map

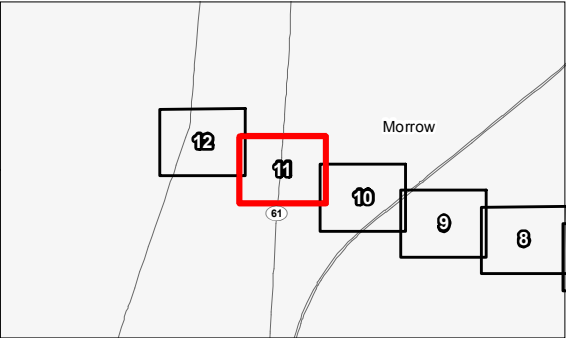
Client/Project
American Electric Power
Hedding Station - Fulton Station
138 kV Transmission Line Rebuild Project

Project Location
Morrow County, Ohio

193704280
Prepared by HDB on 2016-08-17
Technical Review by JDP on 2016-08-18
Independent Review by JB on 2016-09-06



- Legend**
- AEP Substation
 - Structure to be Replaced
 - 138 kV Transmission Line Rebuild
 - - - Access Road
 - - - Existing Transmission Line
 - - - Existing 100-foot Right-Of-Way



- Notes**
- Coordinate System: NAD 1983 StatePlane Ohio North FIPS 3401 Feet
 - Data Sources Include: Stantec, AEP
 - Orthophotography: 2015 NAIP





Figure No.
1.2

Title
Project Layout Map

Client/Project
American Electric Power
Hedding Station - Fulton Station
138 kV Transmission Line Rebuild Project

Project Location
Morrow County, Ohio

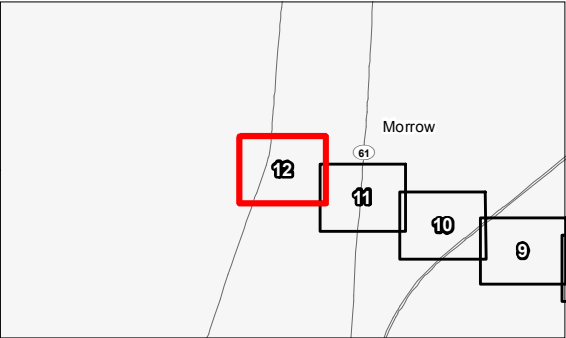
193704280
Prepared by HDB on 2016-08-17
Technical Review by JDP on 2016-08-18
Independent Review by JB on 2016-09-06

0 200 400 Feet
1:4,800 (At original document size of 11x17)

N

Legend

- AEP Substation
- Structure to be Replaced
- 138 kV Transmission Line Rebuild
- - - Access Road
- Existing Transmission Line
- - - Existing 100-foot Right-Of-Way



Notes

1. Coordinate System: NAD 1983 StatePlane Ohio North FIPS 3401 Feet
2. Data Sources Include: Stantec, AEP
3. Orthophotography: 2015 NAIP



V:\1937\Active\193704280\03_data\work\cadd\work\NON\Figure_1.3_Land_Use_Hedding-Fulton_AEP.mxd Revises: 2014-08-13 By: mborczyk



Figure No.
1.3

Title
Land Use Map

Client/Project
American Electric Power
Hedding Station - Fulton Station
138 kV Transmission Line Rebuild Project

Project Location
Morrow County, Ohio

193704280
Prepared by HDB on 2014-08-17
Technical Review by JDP on 2016-08-18
Independent Review by JB on 2016-09-06

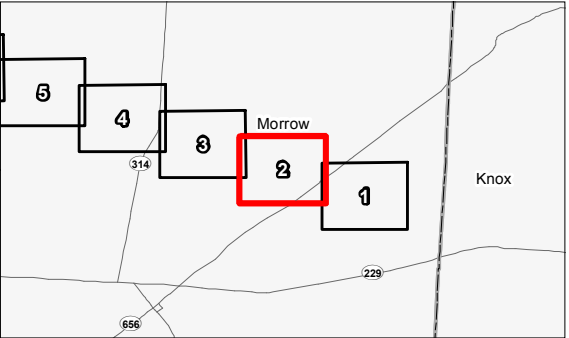
0 200 400 Feet
1:4,800 (At original document size of 11x17)

N

Legend

■ AEP Substation	Developed, Low Intensity
● Structure to be Replaced	Developed, Medium Intensity
— 138 kV Transmission Line Rebuild	Deciduous Forest
- - - Access Road	Evergreen Forest
— Existing Transmission Line	Shrub/Scrub
- - - Existing 100-foot Right-Of-Way	Grassland/Herbaceous
■ Residence	Pasture/Hay
⚡ School*	Cultivated Crops
⛔ Cemetery	Woody Wetlands
⛔ Church*	Emergent Herbaceous Wetlands
National Land Cover Database	
■ Open Water	
■ Developed, Open Space	

*No feature within map extents.



Notes

1. Coordinate System: NAD 1983 StatePlane Ohio North FIPS 3401 Feet
2. Data Sources Include: Stantec, AEP, NLCD
3. Orthophotography: 2015 NAIP



V:\1937\Active\193704280\03_data\ok_cad\ok\mxd\NON\Figure_1.3_Land_Use_Hedding-Fulton_AEP.mxd Revises: 2014-08-13 By: mborzky



Figure No.
1.3

Title
Land Use Map

Client/Project
American Electric Power
Hedding Station - Fulton Station
138 kV Transmission Line Rebuild Project

Project Location
Morrow County, Ohio

193704280
Prepared by HDB on 2014-08-17
Technical Review by JDP on 2016-08-18
Independent Review by JB on 2016-09-06

0200400
Feet
1:4,800 (At original document size of 11x17)

N

Legend

■

AEP Substation

●

Structure to be Replaced

138 kV Transmission Line Rebuild

Access Road

Existing Transmission Line

Existing 100-foot Right-Of-Way

■

Residence

⚡

School*

⛪

Cemetery

⛪

Church*

National Land Cover Database

Open Water

Developed, Open Space

Developed, Low Intensity

Developed, Medium Intensity

Deciduous Forest

Evergreen Forest

Shrub/Scrub

Grassland/Herbaceous

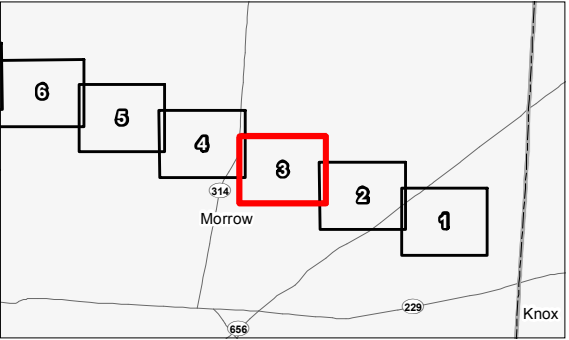
Pasture/Hay

Cultivated Crops

Woody Wetlands

Emergent Herbaceous Wetlands

*No feature within map extents.



Notes

- Coordinate System: NAD 1983 StatePlane Ohio North FIPS 3401 Feet
- Data Sources Include: Stantec, AEP, NLCD
- Orthophotography: 2015 NAIP



V:\1937\Active\193704280\03_data\work\cadd\mxd\NON\Figure_1.3_Land_Use_Hedding-Fulton_AEP.mxd Revises: 2014-08-13 By: mborzky



Figure No.
1.3

Title
Land Use Map

Client/Project
American Electric Power
Hedding Station - Fulton Station
138 kV Transmission Line Rebuild Project

Project Location
Morrow County, Ohio

193704280
Prepared by HDB on 2014-08-17
Technical Review by JDP on 2014-08-18
Independent Review by JB on 2014-09-06

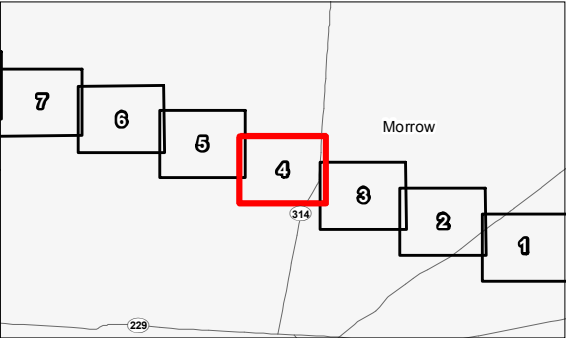
0 200 400 Feet
1:4,800 (At original document size of 11x17)

N

Legend

■ AEP Substation	Developed, Low Intensity
○ Structure to be Replaced	Developed, Medium Intensity
— 138 kV Transmission Line Rebuild	Deciduous Forest
- - - Access Road	Evergreen Forest
~ Existing Transmission Line	Shrub/Scrub
- - - Existing 100-foot Right-Of-Way	Grassland/Herbaceous
■ Residence	Pasture/Hay
⚡ School*	Cultivated Crops
⛪ Cemetery	Woody Wetlands
⛪ Church*	Emergent Herbaceous Wetlands
National Land Cover Database	
■ Open Water	
■ Developed, Open Space	

*No feature within map extents.



- Notes**
1. Coordinate System: NAD 1983 StatePlane Ohio North FIPS 3401 Feet
 2. Data Sources Include: Stantec, AEP, NLCD
 3. Orthophotography: 2015 NAIP



V:\1937\Active\193704280\03_data\work_cad\work\mxd\NON\Figure_1.3_Land_Use_Hedding_Fulton_AEP.mxd Reviewed: 2014-09-13 By: mbarak



Figure No.
1.3

Title
Land Use Map

Client/Project
American Electric Power
Hedding Station - Fulton Station
138 kV Transmission Line Rebuild Project

Project Location
Morrow County, Ohio

193704280
Prepared by HDB on 2016-08-17
Technical Review by JDP on 2016-08-18
Independent Review by JB on 2016-09-06

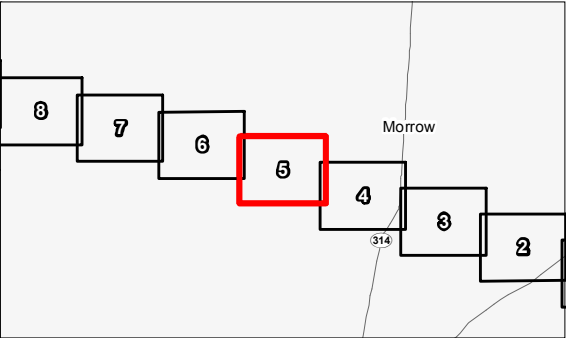
0 200 400 Feet
1:4,800 (At original document size of 11x17)

N

Legend

■ AEP Substation	Developed, Low Intensity
○ Structure to be Replaced	Developed, Medium Intensity
— 138 kV Transmission Line Rebuild	Deciduous Forest
- - - Access Road	Evergreen Forest
- - - Existing Transmission Line	Shrub/Scrub
- - - Existing 100-foot Right-Of-Way	Grassland/Herbaceous
■ Residence	Pasture/Hay
⚡ School*	Cultivated Crops
⛪ Cemetery	Woody Wetlands
⛪ Church*	Emergent Herbaceous Wetlands
National Land Cover Database	
■ Open Water	
■ Developed, Open Space	

*No feature within map extents.



Notes

1. Coordinate System: NAD 1983 StatePlane Ohio North FIPS 3401 Feet
2. Data Sources Include: Stantec, AEP, NLCD
3. Orthophotography: 2015 NAIP



V:\1937\Active\193704280\03_data\ok_cad\ok\mxd\NON\Figure_1.3_Land_Use_Hedding_Fulton_AEP.mxd Revises: 20140913 By: mbarokv



Figure No.

1.3

Title

Land Use Map

Client/Project

American Electric Power
Hedding Station - Fulton Station
138 kV Transmission Line Rebuild Project

Project Location

Morrow County, Ohio

193704280

Prepared by HDB on 2016-08-17

Technical Review by JDP on 2016-08-18

Independent Review by JB on 2016-09-06

0 200 400
Feet

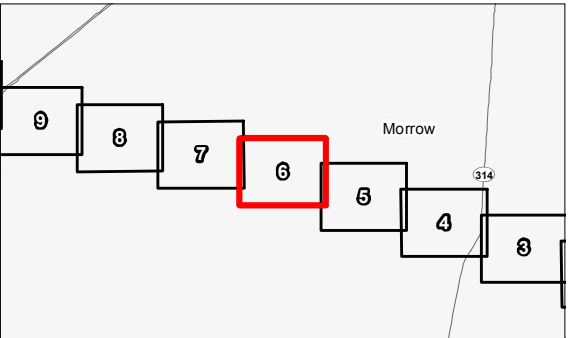
1:4,800 (At original document size of 11x17)



Legend

- | | |
|--------------------------------------|------------------------------|
| ■ AEP Substation | Developed, Low Intensity |
| ○ Structure to be Replaced | Developed, Medium Intensity |
| — 138 kV Transmission Line Rebuild | Deciduous Forest |
| - - - Access Road | Evergreen Forest |
| - - - Existing Transmission Line | Shrub/Scrub |
| - - - Existing 100-foot Right-Of-Way | Grassland/Herbaceous |
| ■ Residence | Pasture/Hay |
| ⚡ School* | Cultivated Crops |
| ⛔ Cemetery | Woody Wetlands |
| ⛔ Church* | Emergent Herbaceous Wetlands |
| National Land Cover Database | |
| ■ Open Water | |
| ■ Developed, Open Space | |

*No feature within map extents.



Notes

1. Coordinate System: NAD 1983 StatePlane Ohio North FIPS 3401 Feet
2. Data Sources Include: Stantec, AEP, NLCD
3. Orthophotography: 2015 NAIP



V:\1937\Active\193704280\03_data\ok_cad\ok\mxd\193704280\Figure_1.3_Land_Use_Hedding-Fulton_AEP.mxd Revised: 2016-08-13 By: mbarak



Figure No.
1.3

Title
Land Use Map

Client/Project
American Electric Power
Hedding Station - Fulton Station
138 kV Transmission Line Rebuild Project

Project Location
Morrow County, Ohio

193704280
Prepared by HDB on 2016-08-17
Technical Review by JDP on 2016-08-18
Independent Review by JB on 2016-09-06

0200400
Feet
1:4,800 (At original document size of 11x17)

N

Legend

■

AEP Substation

●

Structure to be Replaced

138 kV Transmission Line Rebuild

Access Road

Existing Transmission Line

Existing 100-foot Right-Of-Way

Residence

School*

Cemetery

Church*

Open Water

Developed, Open Space

Developed, Low Intensity

Developed, Medium Intensity

Deciduous Forest

Evergreen Forest

Shrub/Scrub

Grassland/Herbaceous

Pasture/Hay

Cultivated Crops

Woody Wetlands

Emergent Herbaceous Wetlands

National Land Cover Database

*No feature within map extents.

Notes

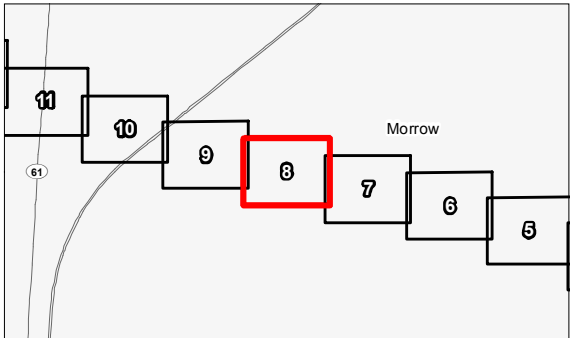
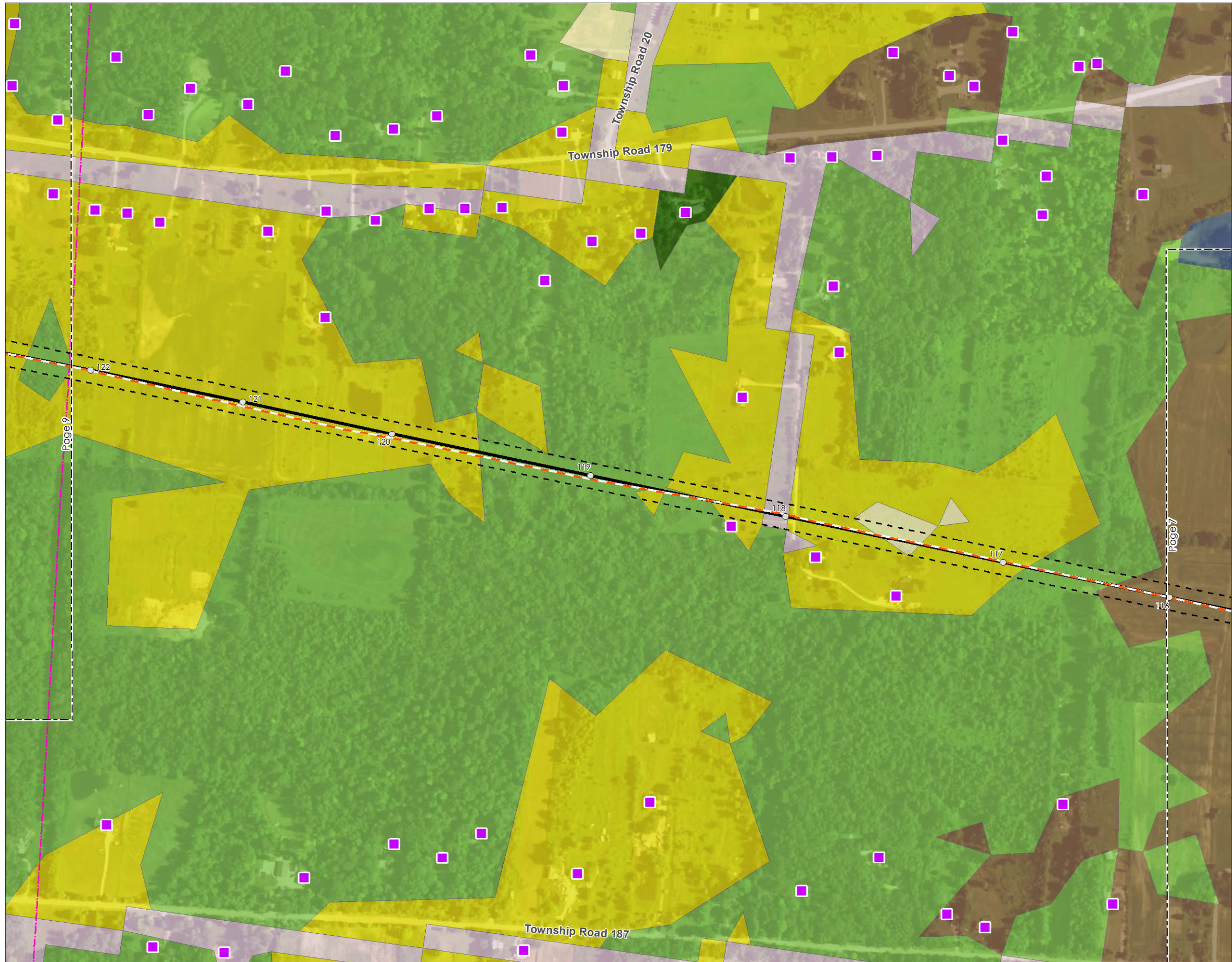
1. Coordinate System: NAD 1983 StatePlane Ohio North FIPS 3401 Feet

2. Data Sources Include: Stantec, AEP, NLCD

3. Orthophotography: 2015 NAIP



\\1927\Active\193704280\03_data\work\cadd\work\NON\Figure_1.3_Land_Use_Hedding-Fulton_AEP.mxd Revises: 2014-08-13 By: mbarak



Notes

1. Coordinate System: NAD 1983 StatePlane Ohio North FIPS 3401 Feet
2. Data Sources Include: Stantec, AEP, NLCD
3. Orthophotography: 2015 NAIP



V:\1937\Active\193704280\03_data\ok_cad\ok\mxd\193704280\1.3_Land_Use_Hedding-Fulton_AEP.mxd Revises: 2014-08-13 By: mborczyk



Figure No.
1.3

Title
Land Use Map

Client/Project
American Electric Power
Hedding Station - Fulton Station
138 kV Transmission Line Rebuild Project

Project Location
Morrow County, Ohio

193704280
Prepared by HDB on 2014-08-17
Technical Review by JDP on 2014-08-18
Independent Review by JB on 2014-09-06

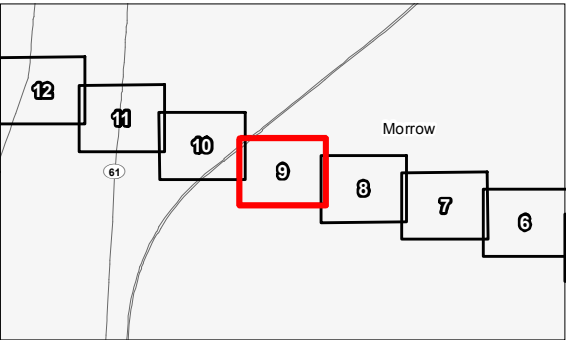
0 200 400 Feet
1:4,800 (At original document size of 11x17)

N

Legend

■ AEP Substation	Developed, Low Intensity
○ Structure to be Replaced	Developed, Medium Intensity
— 138 kV Transmission Line Rebuild	Deciduous Forest
- - - Access Road	Evergreen Forest
- - - Existing Transmission Line	Shrub/Scrub
- - - Existing 100-foot Right-Of-Way	Grassland/Herbaceous
■ Residence	Pasture/Hay
⚡ School*	Cultivated Crops
⛪ Cemetery	Woody Wetlands
⛪ Church*	Emergent Herbaceous Wetlands
National Land Cover Database	
■ Open Water	
■ Developed, Open Space	

*No feature within map extents.



Notes

1. Coordinate System: NAD 1983 StatePlane Ohio North FIPS 3401 Feet
2. Data Sources Include: Stantec, AEP, NLCD
3. Orthophotography: 2015 NAIP



V:\1937\Active\193704280\03_data\ok_cad\ok\mxd\NON\Figure_1.3_Land_Use_Hedding_Fulton_AEP.mxd Revises: 2014-08-13 By: mborczyk

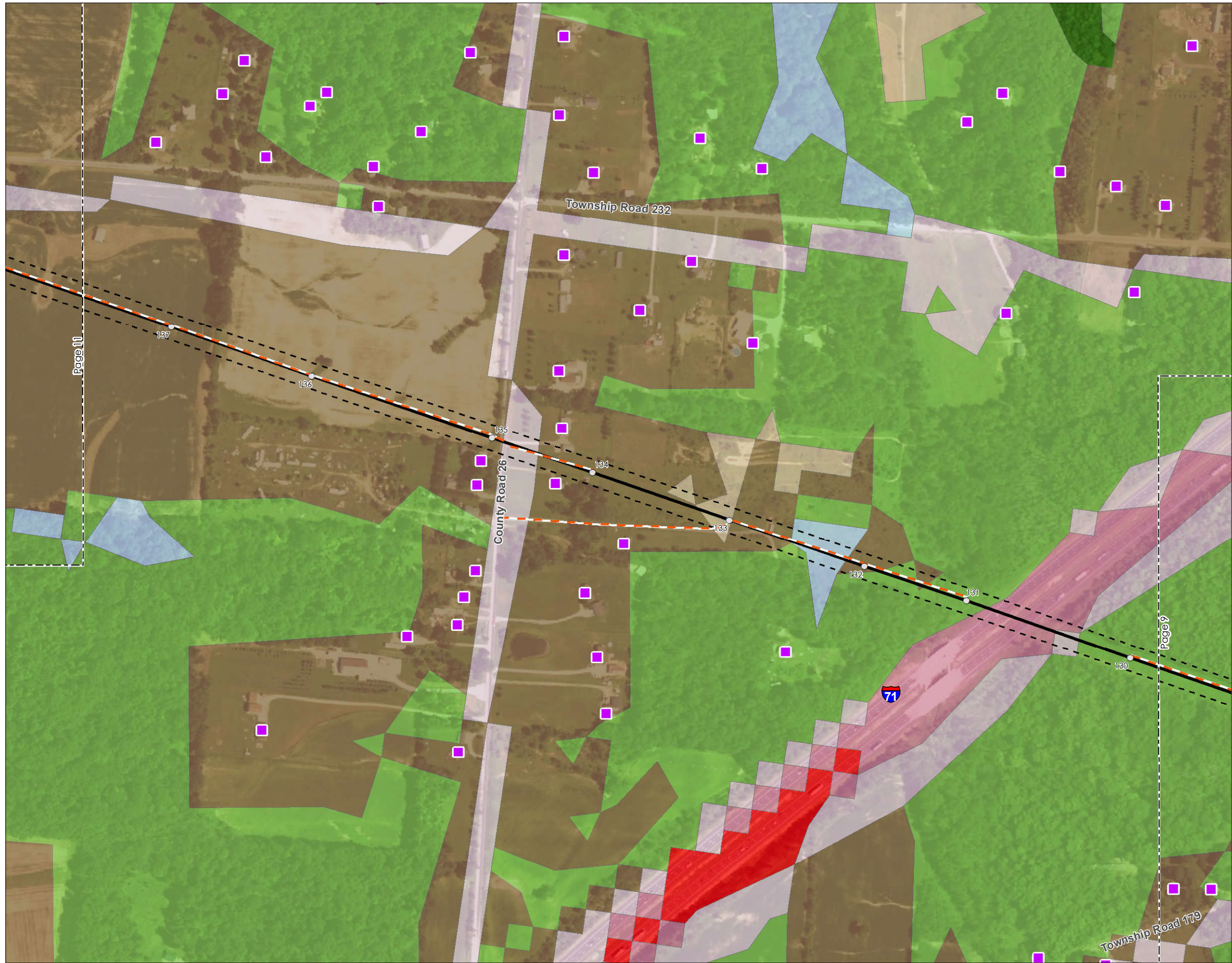


Figure No. **1.3**

Title
Land Use Map

Client/Project
American Electric Power
Hedding Station - Fulton Station
138 kV Transmission Line Rebuild Project

Project Location
Morrow County, Ohio

193704280
Prepared by HDB on 2014-08-17
Technical Review by JDP on 2014-08-18
Independent Review by JB on 2014-09-06

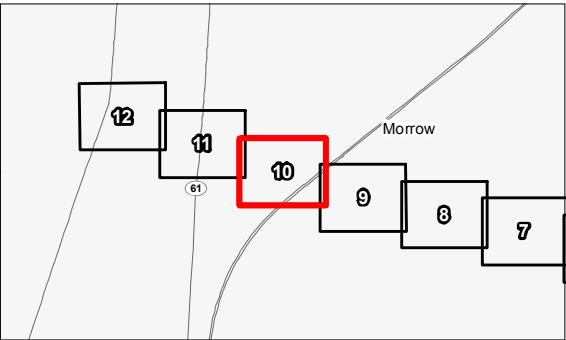
0 200 400 Feet
1:4,800 (At original document size of 11x17)

N

Legend

■ AEP Substation	Developed, Low Intensity
○ Structure to be Replaced	Developed, Medium Intensity
— 138 kV Transmission Line Rebuild	Deciduous Forest
- - - Access Road	Evergreen Forest
- - - Existing Transmission Line	Shrub/Scrub
- - - Existing 100-foot Right-Of-Way	Grassland/Herbaceous
■ Residence	Pasture/Hay
⚡ School*	Cultivated Crops
⛪ Cemetery	Woody Wetlands
⛪ Church*	Emergent Herbaceous Wetlands
National Land Cover Database	
■ Open Water	
■ Developed, Open Space	

*No feature within map extents.



Notes

1. Coordinate System: NAD 1983 StatePlane Ohio North FIPS 3401 Feet
2. Data Sources Include: Stantec, AEP, NLCD
3. Orthophotography: 2015 NAIP



V:\1937\Activa\193704280\03_data\work_cad\work\mxd\NON\Figure_1.3_Land_Use_Hedding-Fulton_AEP.mxd Revised: 2014-09-13 By: mbarokov



Figure No.
1.3

Title
Land Use Map

Client/Project
American Electric Power
Hedding Station - Fulton Station
138 kV Transmission Line Rebuild Project

Project Location
Morrow County, Ohio

193704280
Prepared by HDB on 2014-08-17
Technical Review by JDP on 2014-08-18
Independent Review by JB on 2014-09-06

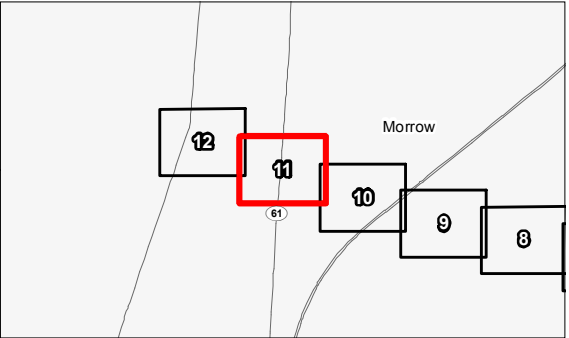
0 200 400 Feet
1:4,800 (At original document size of 11x17)

N

Legend

■ AEP Substation	Developed, Low Intensity
● Structure to be Replaced	Developed, Medium Intensity
— 138 kV Transmission Line Rebuild	Deciduous Forest
- - - Access Road	Evergreen Forest
- - - Existing Transmission Line	Shrub/Scrub
- - - Existing 100-foot Right-Of-Way	Grassland/Herbaceous
■ Residence	Pasture/Hay
⚡ School*	Cultivated Crops
⛪ Cemetery	Woody Wetlands
⛪ Church*	Emergent Herbaceous Wetlands
National Land Cover Database	
■ Open Water	
■ Developed, Open Space	

*No feature within map extents.



Notes

1. Coordinate System: NAD 1983 StatePlane Ohio North FIPS 3401 Feet
2. Data Sources Include: Stantec, AEP, NLCD
3. Orthophotography: 2015 NAIP





Figure No.
1.3

Title
Land Use Map

Client/Project
American Electric Power
Hedding Station - Fulton Station
138 kV Transmission Line Rebuild Project

Project Location
Morrow County, Ohio

193704280
Prepared by HDB on 2016-08-17
Technical Review by JDP on 2016-08-18
Independent Review by JB on 2016-09-06

0200400
Feet
1:4,800 (At original document size of 11x17)

Legend

AEP Substation

Structure to be Replaced

138 kV Transmission Line Rebuild

Access Road

Existing Transmission Line

Existing 100-foot Right-Of-Way

Residence

School*

Cemetery

Church*

National Land Cover Database

Open Water

Developed, Open Space

Developed, Low Intensity

Developed, Medium Intensity

Deciduous Forest

Evergreen Forest

Shrub/Scrub

Grassland/Herbaceous

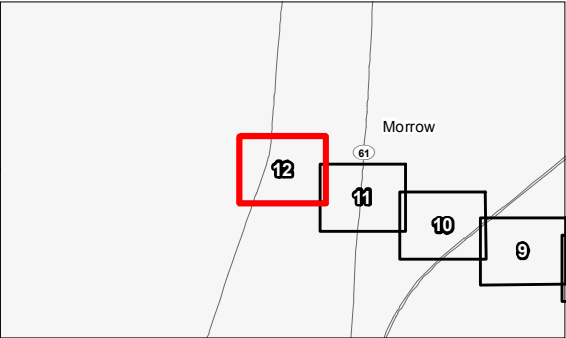
Pasture/Hay

Cultivated Crops

Woody Wetlands

Emergent Herbaceous Wetlands

*No feature within map extents.



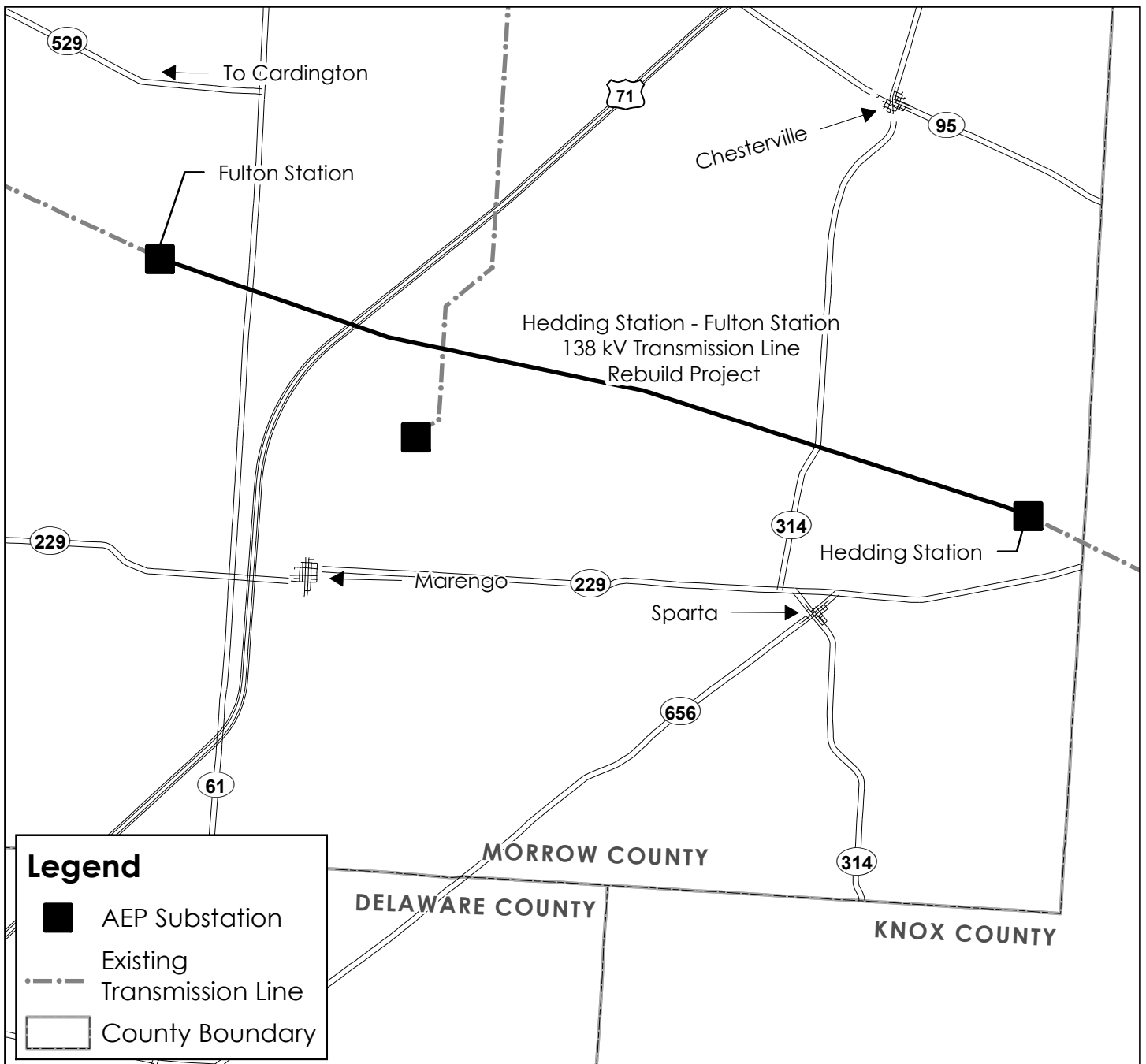
- Notes
1. Coordinate System: NAD 1983 StatePlane Ohio North FIPS 3401 Feet

2. Data Sources Include: Stantec, AEP, NLCD

3. Orthophotography: 2015 NAIP



Figure 1.4 Concept Map



This foregoing document was electronically filed with the Public Utilities

Commission of Ohio Docketing Information System on

9/26/2016 1:49:36 PM

in

Case No(s). 16-1531-EL-BLN

Summary: Letter of Notification Part 3 electronically filed by Mr. Hector Garcia on behalf of AEP Ohio Transmission Company