

LETTER OF NOTIFICATION FOR RUTLAND STATION EXPANSION PROJECT

Appendix A Project Maps

August 1, 2016

Appendix A Project Maps

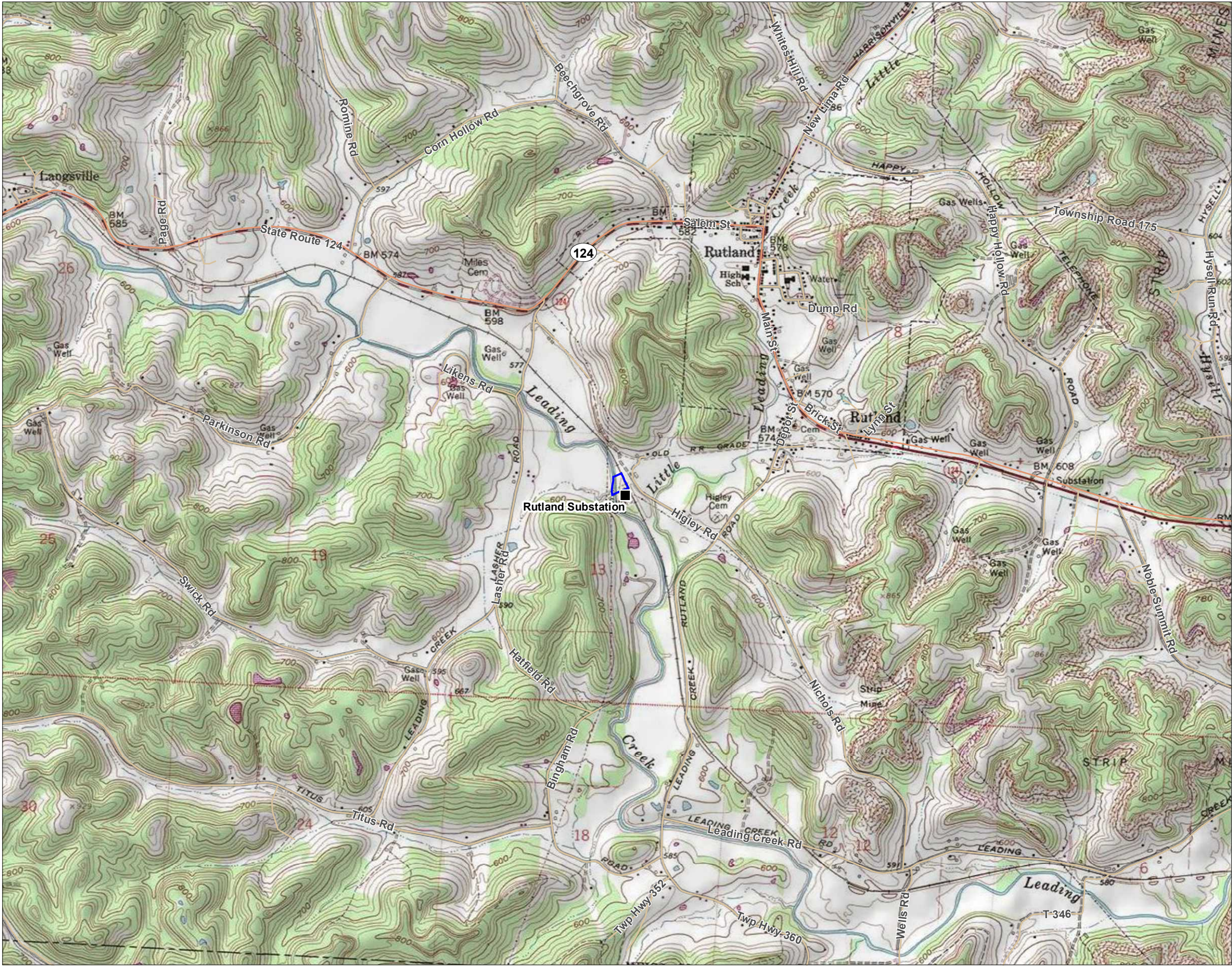
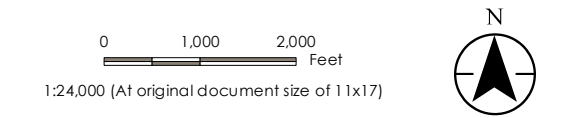


Figure No.
1.1
Title
Project Location Map

Client/Project
American Electric Power
Rutland Station Expansion Project

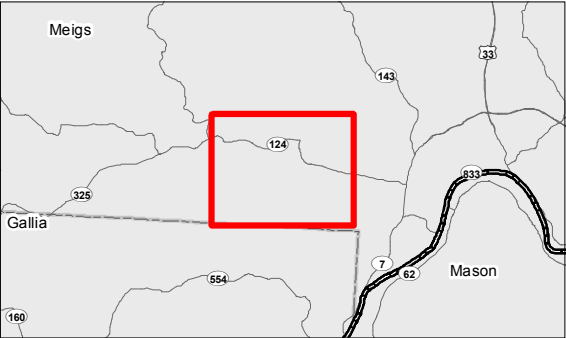
Project Location
T06N, R14W, S13
Meigs County, Ohio

193704292
Prepared by BT on 2016-05-09
Technical Review by DG on 2016-05-09
Independent Review by xxon 2016-xx-xx



Legend

- AEP Substation
- Study Area



Notes

1. Coordinate System: NAD 1983 StatePlane Ohio South FIPS 3402 Feet
2. Data Sources Include: Stantec, AEP, NADS
3. Background: USGS 7.5' Topographic Quadrangles





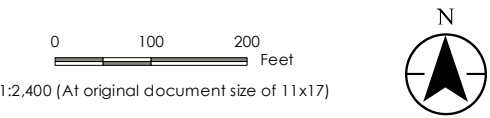
Figure No.
1.2

Title
Project Layout Map

Client/Project
American Electric Power
Rutland Station Expansion Project

Project Location
T06N, R14W, S13
Meigs County, Ohio

193704292
Prepared by BT on 2016-05-09
Technical Review by DG on 2016-05-09
Independent Review by xxon 2016-xx-xx



Legend

■

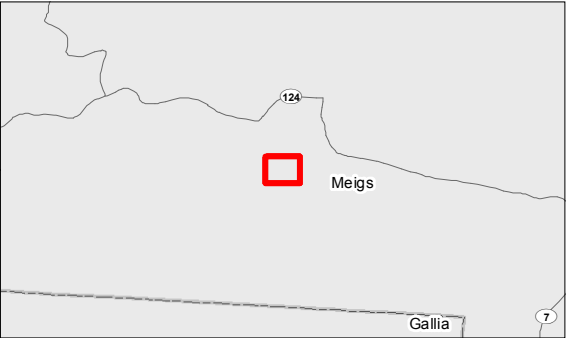
AEP Substation

□

Expansion Area

□

Study Area



- Notes
1. Coordinate System: NAD 1983 StatePlane Ohio South FIPS 3402 Feet

2. Data Sources Include: Stantec, AEP, NADS

3. Orthophotography: ESRI 2013



R:\data\other_PCS\193704292_AEP_Rutland Station\03_data\06_cad\06a\mxd\Rutland Station_AEP_Figure 1.3.mxd Revised: 2016-05-09 By: bhlernann

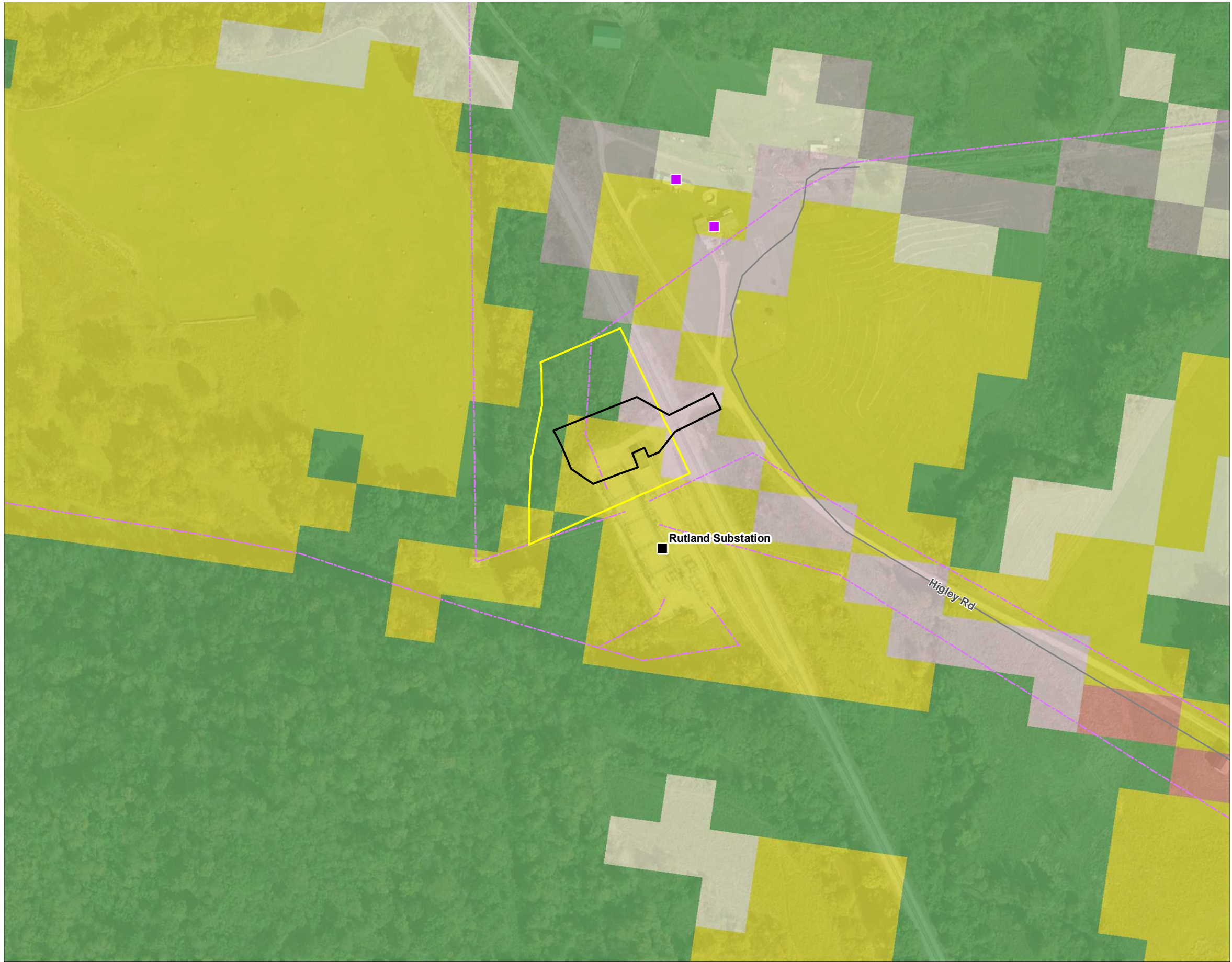


Figure No.

1.3

Title

Land Use Map

Client/Project

American Electric Power
Rutland Station Expansion Project

Project Location

T04N, R14W, S13
Meigs County, Ohio

193704292

Prepared by BT on 2016-05-09

Technical Review by DG on 2016-05-09

Independent Review by xxon 2016-xx-xx

0 100 200 Feet

1:2,400 (At original document size of 11x17)

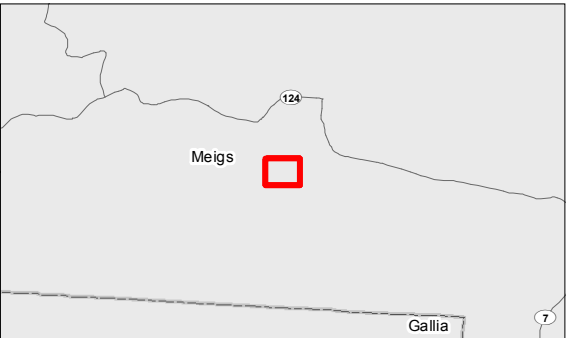


Legend

- AEP Substation
- Expansion Area
- Study Area
- + Cemetery*
- Residence
- AEP Transmission Lines
- Land Use
 - Barren Land
 - Deciduous Forest
 - Developed, Open Space
 - Developed, Low Intensity
 - Hay/Pasture
 - Herbaceous

* No features within map extent

** No parks, wildlife management areas, nature preserves or government owned lands were identified within the project area or its vicinity.
(Sources: ODNR, USFS, USFWS, The Nature Conservancy, PADUS)

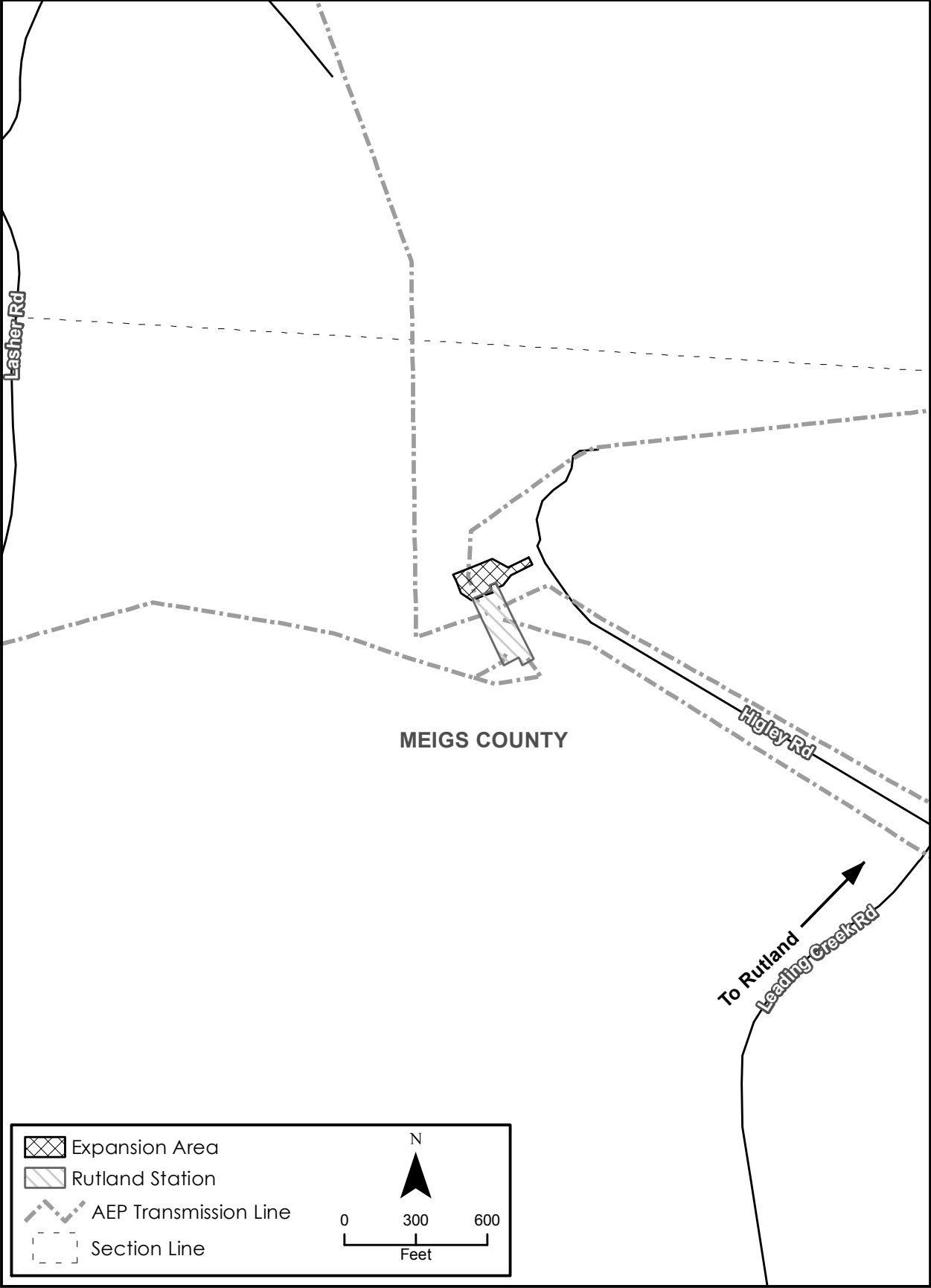


Notes

1. Coordinate System: NAD 1983 StatePlane Ohio South FIPS 3402 Feet
2. Data Sources Include: Stantec, AEP, NADS, 2011 NLCD, ESRI
3. Orthophotography: ESRI 2013



Figure 1.4 - Concept Map

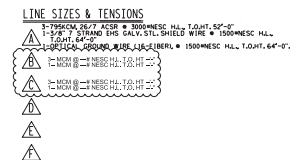


LETTER OF NOTIFICATION FOR RUTLAND STATION EXPANSION PROJECT

Appendix B Structure Design Drawings

August 1, 2016

Appendix B Structure Design Drawings



ONE-LINE	E-1200
GRADING PLAN	E-1010
138KV E. A.	E-2201
138KV E. A.	E-2202
138KV E. A.	E-2203
34.5KV E. A.	ED1-1091A
34.5KV E. A.	ED1-1091B
34.5KV E. A.	ED1-1091C
34.5KV E. A.	E-2101
34.5KV E. A.	E-1012
33KV E. A.	E-1011
34.5KV FND. PLAN	E-3201
138KV STEEL	E-9201
34.5KV STEEL	ED1-1991A
34.5KV STEEL	E-9005
CONTROL HOUSE	E-4276
OIL CONTAINMENT	ED-892

1) FOR GENERAL NOTES SEE EDS-100

NUMBERS IN () REFER TO B/M # 47051

PRELIMINARY

[illegible]

This foregoing document was electronically filed with the Public Utilities

Commission of Ohio Docketing Information System on

8/1/2016 4:21:46 PM

in

Case No(s). 16-1528-EL-BLN

Summary: Letter of Notification -Request for Expedited Treatment electronically filed by Mrs. Erin C Miller on behalf of AEP Ohio Transmission Company