

Map projection: Web Mercator Corner coordinates: WGS84 Edge tics: UTM Zone 17N WGS84



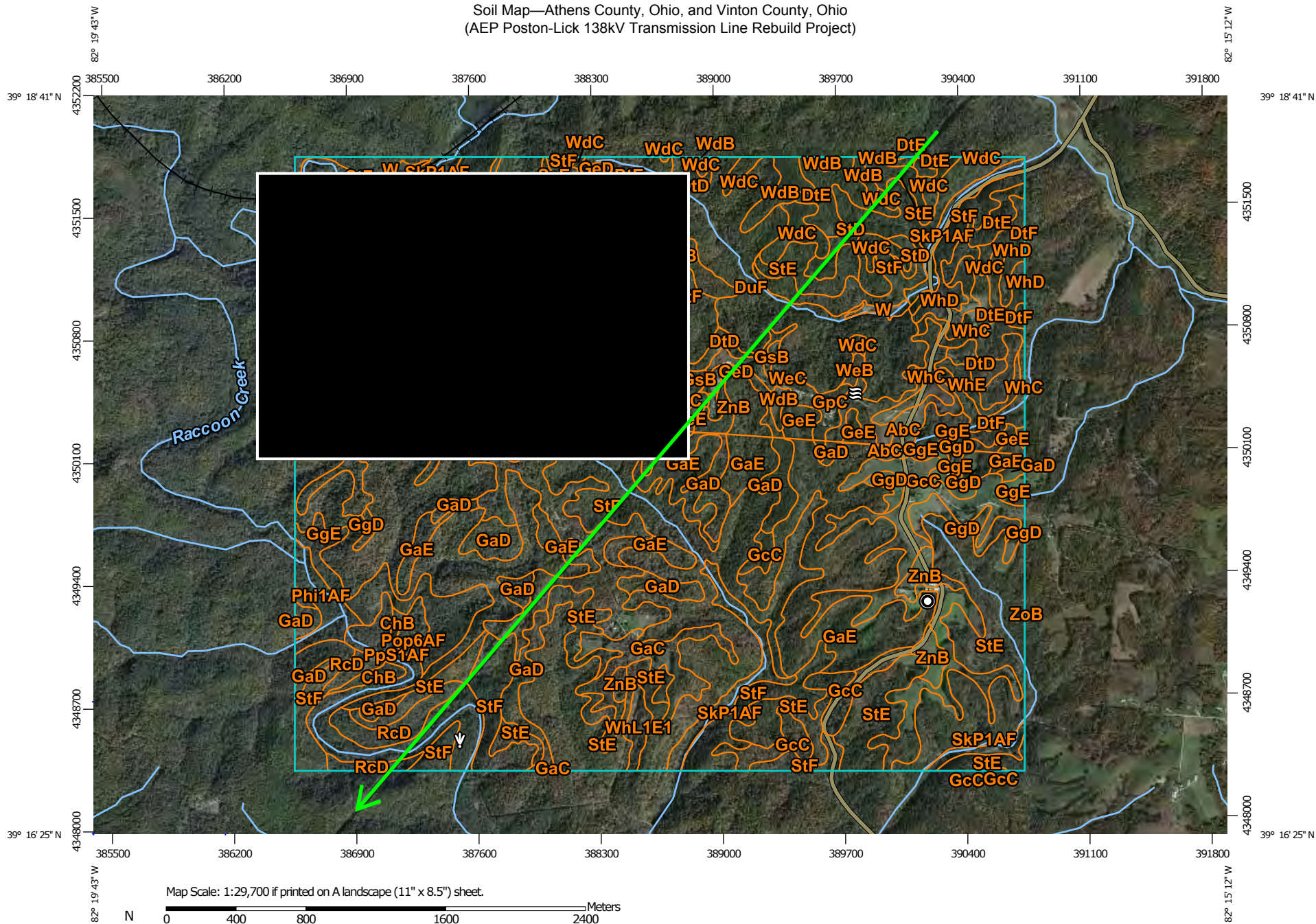
## Map Unit Legend

Athens County, Ohio (OH009)			
Map Unit Symbol	Map Unit Name	Acres in AOI	Percent of AOI
BkD	Berks-Westmoreland silt loams, 15 to 25 percent slopes	21.6	0.6%
BkE	Berks-Westmoreland silt loams, 25 to 40 percent slopes	15.3	0.5%
BrC	Brookside silt loam, 8 to 15 percent slopes	2.0	0.1%
BrD	Brookside silt loam, 15 to 25 percent slopes	16.2	0.5%
BrE	Brookside silt loam, 25 to 40 percent slopes	3.5	0.1%
DtD	Dekalb-Westmoreland complex, 15 to 25 percent slopes	52.5	1.6%
DtE	Dekalb-Westmoreland complex, 25 to 40 percent slopes	230.7	6.9%
DtF	Dekalb-Westmoreland complex, 40 to 70 percent slopes	531.9	15.9%
DuF	Dekalb-Westmoreland complex, benched, 40 to 70 percent slopes	773.2	23.1%
GgE	Gilpin-Guernsey complex, 25 to 40 percent slopes	13.3	0.4%
GsB	Guernsey silt loam, 3 to 8 percent slopes	14.6	0.4%
GsC	Guernsey silt loam, 8 to 15 percent slopes	88.7	2.7%
GuC	Guernsey-Upshur complex, 8 to 15 percent slopes	2.7	0.1%
GuD	Guernsey-Upshur complex, 15 to 25 percent slopes	5.2	0.2%
Mel1AF	Melvin silt loam, 0 to 2 percent slopes, frequently flooded	9.6	0.3%
PpS1AF	Pope-Stokly silt loams, 0 to 3 percent slopes, frequently flooded	221.8	6.6%
RcC	Richland loam, 8 to 15 percent slopes	18.3	0.5%
RcD	Richland loam, 15 to 25 percent slopes	76.0	2.3%
RcE	Richland loam, 25 to 40 percent slopes	31.8	1.0%

Athens County, Ohio (OH009)			
Map Unit Symbol	Map Unit Name	Acres in AOI	Percent of AOI
SkP1AF	Stokly-Philo silt loams, 0 to 3 percent slopes, frequently flooded	165.0	4.9%
StD	Steinsburg sandy loam, 15 to 25 percent slopes	47.9	1.4%
StE	Steinsburg sandy loam, 25 to 40 percent slopes	51.1	1.5%
StF	Steinsburg sandy loam, 40 to 70 percent slopes	32.1	1.0%
SvF	Steinsburg-Gilpin association, very steep	126.4	3.8%
W	Water	6.5	0.2%
WdB	Wellston silt loam, 3 to 8 percent slopes	50.9	1.5%
WdC	Wellston silt loam, 8 to 15 percent slopes	118.3	3.5%
WeB	Westmore silt loam, 3 to 8 percent slopes	50.0	1.5%
WeC	Westmore silt loam, 8 to 15 percent slopes	3.6	0.1%
WhC	Westmoreland-Guernsey silt loams, 8 to 15 percent slopes	103.2	3.1%
WhD	Westmoreland-Guernsey silt loams, 15 to 25 percent slopes	279.4	8.4%
WhE	Westmoreland-Guernsey silt loams, 25 to 40 percent slopes	98.5	2.9%
WkF	Westmoreland-Guernsey silt loams, benched, 40 to 70 percent slopes	80.1	2.4%
<b>Totals for Area of Interest</b>		<b>3,341.8</b>	<b>100.0%</b>



Soil Map—Athens County, Ohio, and Vinton County, Ohio  
(AEP Poston-Lick 138kV Transmission Line Rebuild Project)



Map Scale: 1:29,700 if printed on A landscape (11" x 8.5") sheet.

0 400 800 1600 2400 Meters

0 1000 2000 4000 6000 Feet

Map projection: Web Mercator Corner coordinates: WGS84 Edge tics: UTM Zone 17N WGS84



Natural Resources  
Conservation Service

Web Soil Survey  
National Cooperative Soil Survey

9/24/2015  
Page 1 of 5



## Map Unit Legend

Athens County, Ohio (OH009)			
Map Unit Symbol	Map Unit Name	Acres in AOI	Percent of AOI
AbC	Aaron silt loam, 6 to 15 percent slopes	2.5	0.1%
DtD	Dekalb-Westmoreland complex, 15 to 25 percent slopes	30.6	0.8%
DtE	Dekalb-Westmoreland complex, 25 to 40 percent slopes	155.0	4.3%
DtF	Dekalb-Westmoreland complex, 40 to 70 percent slopes	56.1	1.5%
DuF	Dekalb-Westmoreland complex, benched, 40 to 70 percent slopes	193.2	5.3%
GeD	Germano-Gilpin complex, 15 to 25 percent slopes	23.2	0.6%
GeE	Germano-Gilpin complex, 25 to 40 percent slopes	50.2	1.4%
GgD	Gilpin-Guernsey complex, 15 to 25 percent slopes	32.5	0.9%
GgE	Gilpin-Guernsey complex, 25 to 40 percent slopes	16.9	0.5%
GpC	Gilpin-Aaron complex, 6 to 15 percent slopes	8.3	0.2%
GsB	Guernsey silt loam, 3 to 8 percent slopes	5.9	0.2%
GsC	Guernsey silt loam, 8 to 15 percent slopes	2.9	0.1%
RcD	Richland loam, 15 to 25 percent slopes	5.6	0.2%
SkP1AF	Stokly-Philo silt loams, 0 to 3 percent slopes, frequently flooded	17.1	0.5%
StD	Steinsburg sandy loam, 15 to 25 percent slopes	18.2	0.5%
StE	Steinsburg sandy loam, 25 to 40 percent slopes	42.1	1.2%
StF	Steinsburg sandy loam, 40 to 70 percent slopes	94.2	2.6%
SvF	Steinsburg-Gilpin association, very steep	25.9	0.7%
W	Water	4.2	0.1%
WdB	Wellston silt loam, 3 to 8 percent slopes	59.3	1.6%

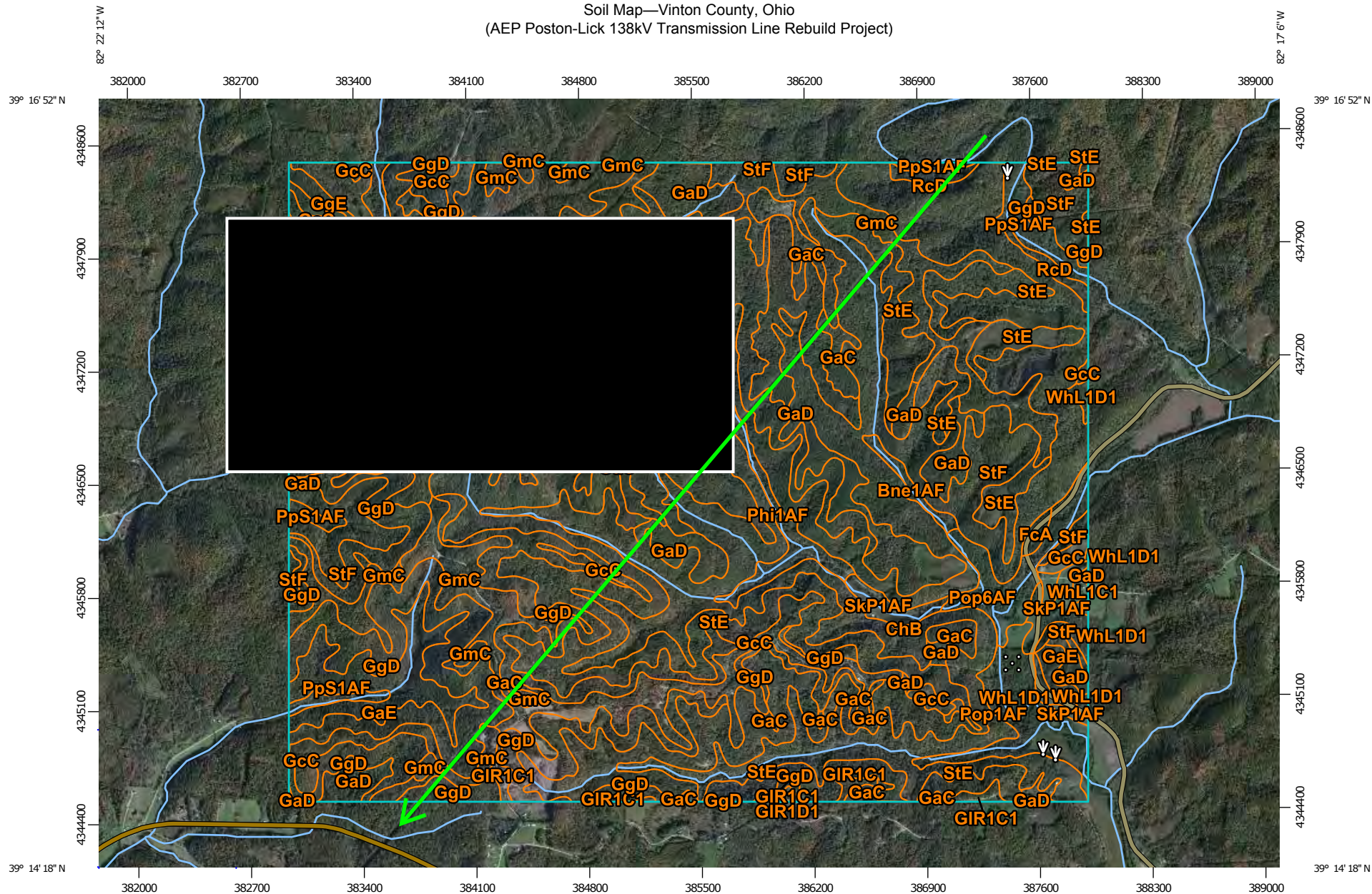
Athens County, Ohio (OH009)			
Map Unit Symbol	Map Unit Name	Acres in AOI	Percent of AOI
WdC	Wellston silt loam, 8 to 15 percent slopes	117.6	3.2%
WeB	Westmore silt loam, 3 to 8 percent slopes	2.9	0.1%
WeC	Westmore silt loam, 8 to 15 percent slopes	13.3	0.4%
WhC	Westmoreland-Guernsey silt loams, 8 to 15 percent slopes	43.5	1.2%
WhD	Westmoreland-Guernsey silt loams, 15 to 25 percent slopes	28.4	0.8%
WhE	Westmoreland-Guernsey silt loams, 25 to 40 percent slopes	11.6	0.3%
ZnB	Zanesville silt loam, 3 to 8 percent slopes	5.9	0.2%
<b>Subtotals for Soil Survey Area</b>		<b>1,067.1</b>	<b>29.4%</b>
<b>Totals for Area of Interest</b>		<b>3,633.4</b>	<b>100.0%</b>

Vinton County, Ohio (OH163)			
Map Unit Symbol	Map Unit Name	Acres in AOI	Percent of AOI
AbC	Aaron silt loam, 6 to 15 percent slopes	1.6	0.0%
ChB	Chavies silt loam, 2 to 6 percent slopes, rarely flooded	8.5	0.2%
GaC	Germano-Gilpin complex, 6 to 15 percent slopes	43.7	1.2%
GaD	Germano-Gilpin complex, 15 to 25 percent slopes	103.3	2.8%
GaE	Germano-Gilpin complex, 25 to 40 percent slopes	350.5	9.6%
GcC	Gilpin-Aaron complex, 6 to 15 percent slopes	159.5	4.4%
GgD	Gilpin-Guernsey complex, 15 to 25 percent slopes	84.5	2.3%
GgE	Gilpin-Guernsey complex, 25 to 40 percent slopes	23.0	0.6%
GmC	Gilpin-Tarhollow complex, 6 to 15 percent slopes	213.2	5.9%
Phi1AF	Philo silt loam, 0 to 3 percent slopes, frequently flooded	51.0	1.4%
Pop6AF	Pope fine sandy loam, 0 to 3 percent slopes, frequently flooded	9.8	0.3%
PpS1AF	Pope-Stokly silt loams, 0 to 3 percent, frequently flooded	74.2	2.0%

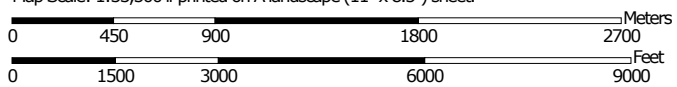


Vinton County, Ohio (OH163)			
Map Unit Symbol	Map Unit Name	Acres in AOI	Percent of AOI
RcD	Richland loam, 15 to 25 percent slopes	40.6	1.1%
SkP1AF	Stokly-Philo silt loams, 0 to 3 percent slopes, frequently flooded	47.0	1.3%
SsE	Steinsburg sandy loam, 25 to 40 percent slopes	4.6	0.1%
StE	Steinsburg-Gilpin association, steep	279.8	7.7%
StF	Steinsburg-Gilpin association, very steep	991.3	27.3%
W	Water	2.6	0.1%
WdC	Wellston silt loam, 8 to 15 percent slopes	11.2	0.3%
WhL1E1	Wharton-Latham silt loams, 25 to 40 percent slopes	10.6	0.3%
ZnB	Zanesville silt loam, 2 to 6 percent slopes	55.7	1.5%
ZoB	Zanesville silt loam, 3 to 8 percent slopes	0.0	0.0%
<b>Subtotals for Soil Survey Area</b>		<b>2,566.3</b>	<b>70.6%</b>
<b>Totals for Area of Interest</b>		<b>3,633.4</b>	<b>100.0%</b>

Soil Map—Vinton County, Ohio  
(AEP Poston-Lick 138kV Transmission Line Rebuild Project)



Map Scale: 1:33,500 if printed on A landscape (11" x 8.5") sheet.



Map projection: Web Mercator Corner coordinates: WGS84 Edge tics: UTM Zone 17N WGS84



Natural Resources  
Conservation Service

Web Soil Survey  
National Cooperative Soil Survey

9/24/2015  
Page 1 of 4



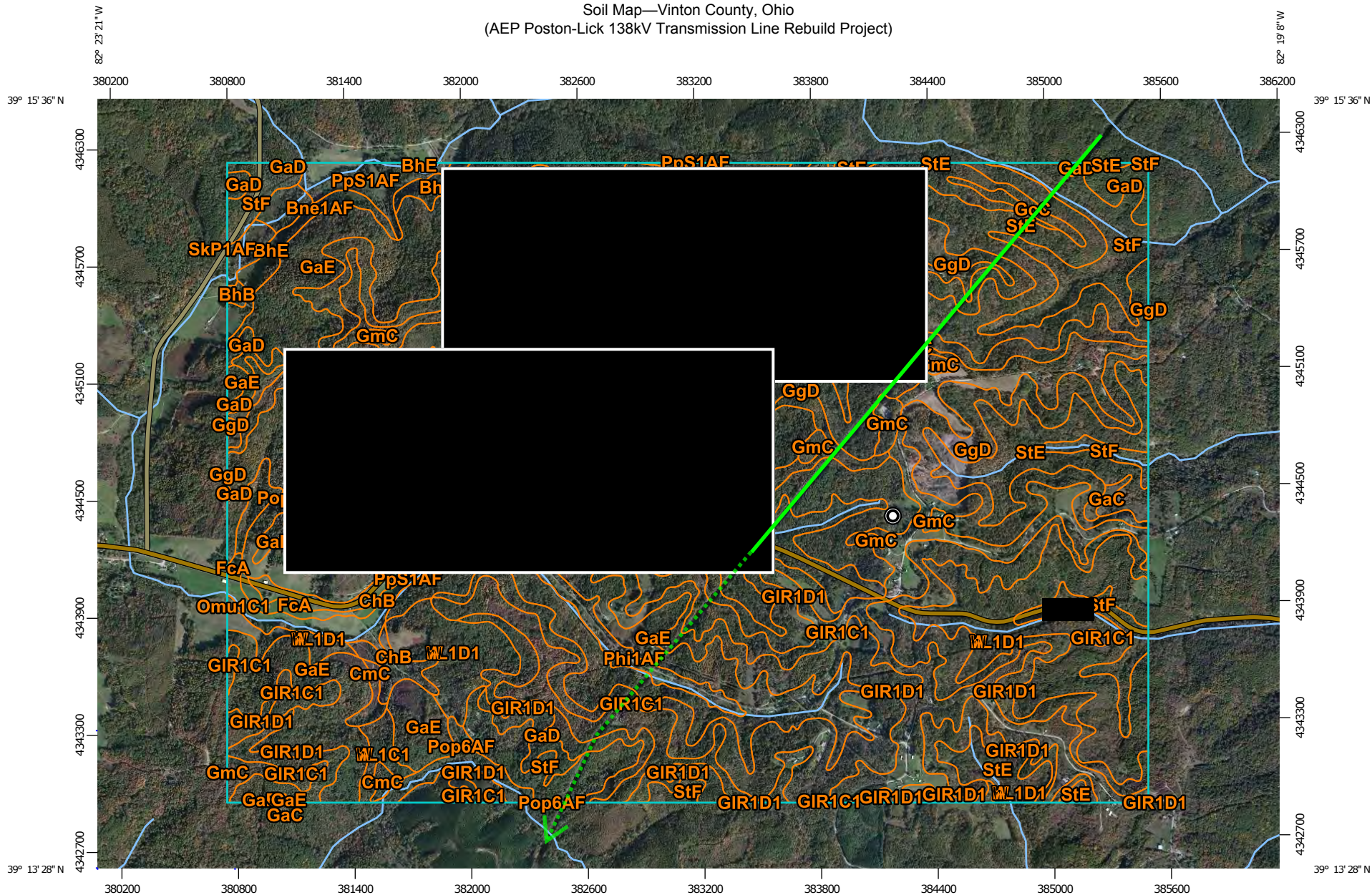
## Map Unit Legend

Vinton County, Ohio (OH163)			
Map Unit Symbol	Map Unit Name	Acres in AOI	Percent of AOI
Bne1AF	Bonnie silt loam, 0 to 2 percent slopes, frequently flooded	12.3	0.3%
ChB	Chavies silt loam, 2 to 6 percent slopes, rarely flooded	1.3	0.0%
FcA	Fitchville silt loam, 0 to 3 percent slopes	6.6	0.1%
GaC	Germano-Gilpin complex, 6 to 15 percent slopes	102.4	2.1%
GaD	Germano-Gilpin complex, 15 to 25 percent slopes	331.3	6.8%
GaE	Germano-Gilpin complex, 25 to 40 percent slopes	112.5	2.3%
GcC	Gilpin-Aaron complex, 6 to 15 percent slopes	316.6	6.5%
GgD	Gilpin-Guernsey complex, 15 to 25 percent slopes	581.4	11.9%
GgE	Gilpin-Guernsey complex, 25 to 40 percent slopes	19.6	0.4%
GIR1C1	Gilpin-Rarden silt loams, 6 to 15 percent slopes	21.2	0.4%
GIR1D1	Gilpin-Rarden silt loams, 15 to 25 percent slopes	0.0	0.0%
GmC	Gilpin-Tarhollow complex, 6 to 15 percent slopes	311.3	6.4%
Omu1B1	Omulga silt loam, 2 to 6 percent slopes	3.9	0.1%
Omu1C1	Omulga silt loam, 6 to 12 percent slopes	1.1	0.0%
Phi1AF	Philo silt loam, 0 to 3 percent slopes, frequently flooded	88.3	1.8%
Pop1AF	Pope silt loam, 0 to 3 percent slopes, frequently flooded	80.8	1.7%
Pop6AF	Pope fine sandy loam, 0 to 3 percent slopes, frequently flooded	60.3	1.2%
PpS1AF	Pope-Stokly silt loams, 0 to 3 percent, frequently flooded	53.0	1.1%
RcD	Richland loam, 15 to 25 percent slopes	19.9	0.4%
SkP1AF	Stokly-Philo silt loams, 0 to 3 percent slopes, frequently flooded	45.5	0.9%
StE	Steinsburg-Gilpin association, steep	1,117.0	22.9%

Vinton County, Ohio (OH163)			
Map Unit Symbol	Map Unit Name	Acres in AOI	Percent of AOI
StF	Steinsburg-Gilpin association, very steep	1,537.3	31.6%
WhL1C1	Wharton-Latham silt loams, 6 to 15 percent slopes	4.5	0.1%
WhL1D1	Wharton-Latham silt loams, 15 to 25 percent slopes	16.8	0.3%
ZnB	Zanesville silt loam, 2 to 6 percent slopes	25.5	0.5%
<b>Totals for Area of Interest</b>		<b>4,870.6</b>	<b>100.0%</b>



Soil Map—Vinton County, Ohio  
(AEP Poston-Lick 138kV Transmission Line Rebuild Project)



Map Scale: 1:27,800 if printed on A landscape (11" x 8.5") sheet.



Map projection: Web Mercator Corner coordinates: WGS84 Edge tics: UTM Zone 17N WGS84



Natural Resources  
Conservation Service

Web Soil Survey  
National Cooperative Soil Survey

9/24/2015  
Page 1 of 4

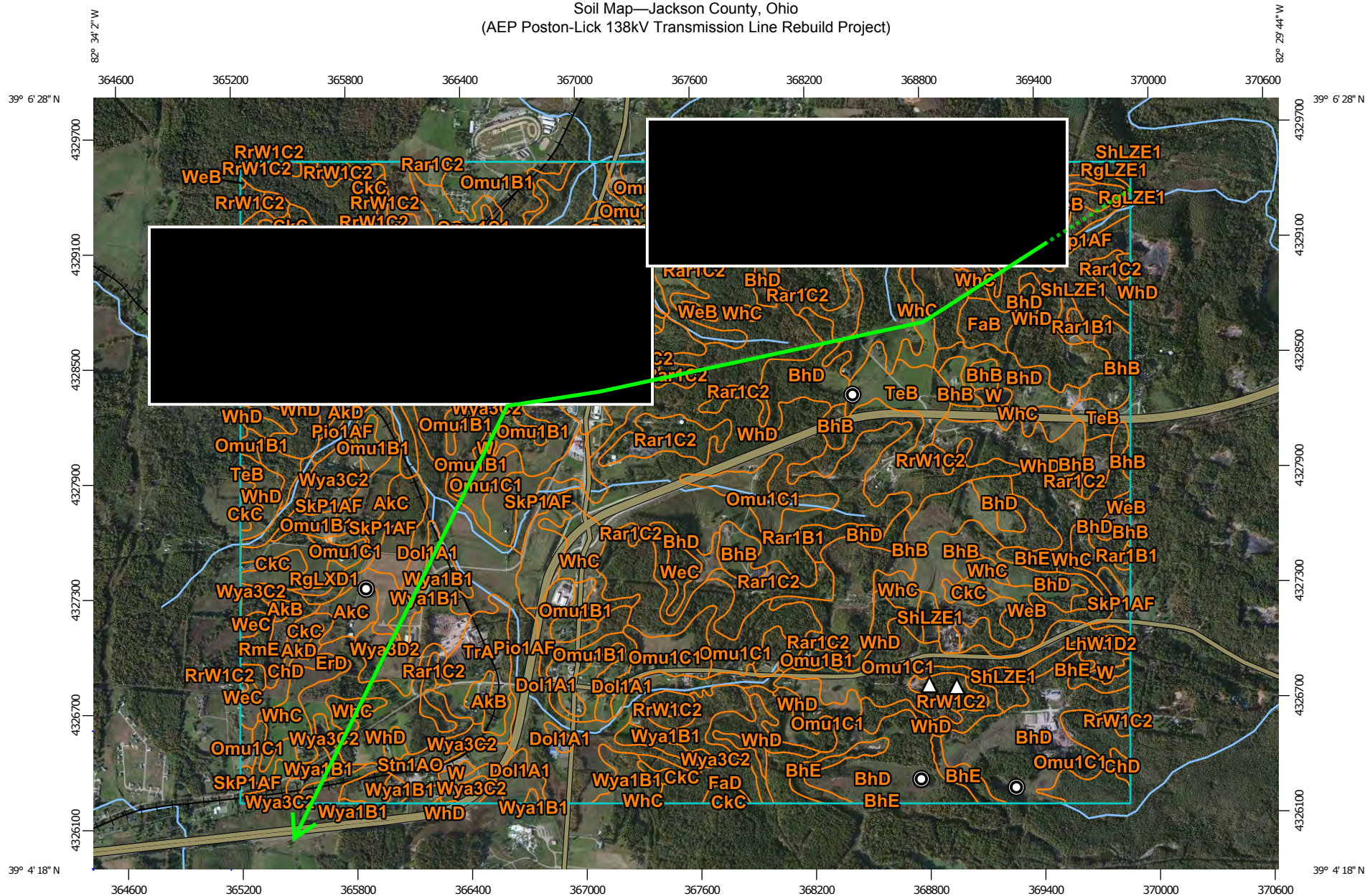
## Map Unit Legend

Vinton County, Ohio (OH163)			
Map Unit Symbol	Map Unit Name	Acres in AOI	Percent of AOI
BhB	Bethesda silty clay loam, 0 to 8 percent slopes	2.3	0.1%
BhE	Bethesda silty clay loam, 20 to 40 percent slopes	35.3	0.9%
Bne1AF	Bonnie silt loam, 0 to 2 percent slopes, frequently flooded	10.1	0.3%
ChB	Chavies silt loam, 2 to 6 percent slopes, rarely flooded	40.3	1.0%
CmC	Chavies silt loam, 6 to 15 percent slopes	10.6	0.3%
FcA	Fitchville silt loam, 0 to 3 percent slopes	9.7	0.3%
GaC	Germano-Gilpin complex, 6 to 15 percent slopes	4.4	0.1%
GaD	Germano-Gilpin complex, 15 to 25 percent slopes	192.5	5.0%
GaE	Germano-Gilpin complex, 25 to 40 percent slopes	733.6	19.0%
GcC	Gilpin-Aaron complex, 6 to 15 percent slopes	295.4	7.7%
GgD	Gilpin-Guernsey complex, 15 to 25 percent slopes	780.4	20.2%
GIR1C1	Gilpin-Rarden silt loams, 6 to 15 percent slopes	301.8	7.8%
GIR1D1	Gilpin-Rarden silt loams, 15 to 25 percent slopes	429.0	11.1%
GmC	Gilpin-Tarhollow complex, 6 to 15 percent slopes	43.9	1.1%
Omu1C1	Omulga silt loam, 6 to 12 percent slopes	0.9	0.0%
Phi1AF	Philo silt loam, 0 to 3 percent slopes, frequently flooded	24.2	0.6%
Pop6AF	Pope fine sandy loam, 0 to 3 percent slopes, frequently flooded	29.9	0.8%
PpS1AF	Pope-Stokly silt loams, 0 to 3 percent, frequently flooded	104.3	2.7%
SkP1AF	Stokly-Philo silt loams, 0 to 3 percent slopes, frequently flooded	45.7	1.2%
StE	Steinsburg-Gilpin association, steep	236.9	6.1%
StF	Steinsburg-Gilpin association, very steep	278.8	7.2%



Vinton County, Ohio (OH163)			
Map Unit Symbol	Map Unit Name	Acres in AOI	Percent of AOI
WhL1C1	Wharton-Latham silt loams, 6 to 15 percent slopes	19.1	0.5%
WhL1D1	Wharton-Latham silt loams, 15 to 25 percent slopes	226.6	5.9%
<b>Totals for Area of Interest</b>		<b>3,855.8</b>	<b>100.0%</b>

Soil Map—Jackson County, Ohio  
(AEP Poston-Lick 138kV Transmission Line Rebuild Project)



Map Scale: 1:28,400 if printed on A landscape (11" x 8.5") sheet.



Map projection: Web Mercator Corner coordinates: WGS84 Edge tics: UTM Zone 17N WGS84



Natural Resources  
Conservation Service

Web Soil Survey  
National Cooperative Soil Survey

9/24/2015  
Page 1 of 4

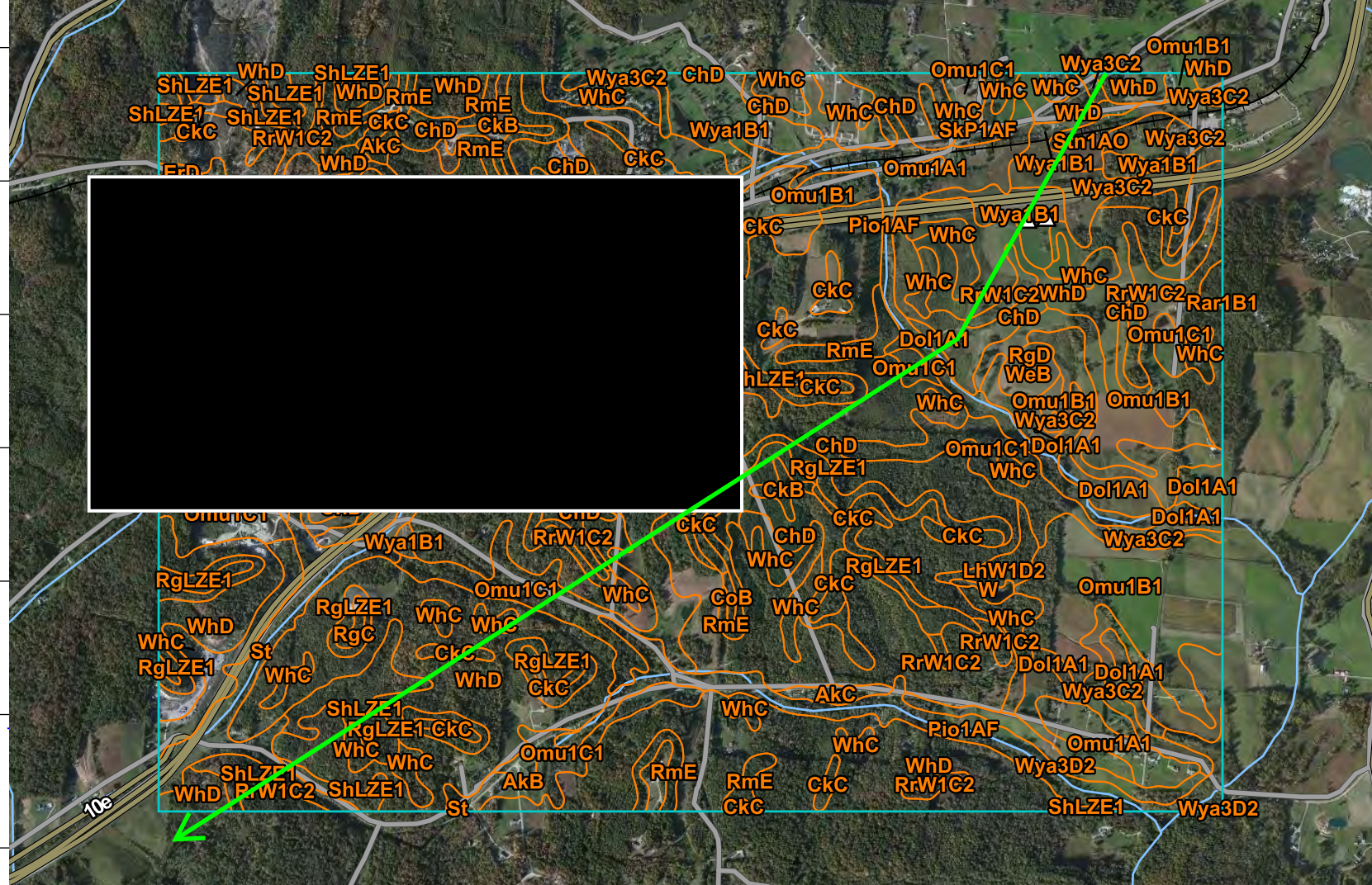
## Map Unit Legend

Jackson County, Ohio (OH079)			
Map Unit Symbol	Map Unit Name	Acres in AOI	Percent of AOI
AkB	Allegheny loam, 3 to 8 percent slopes	13.5	0.3%
AkC	Allegheny loam, 8 to 15 percent slopes	49.8	1.3%
AkD	Allegheny loam, 15 to 25 percent slopes	19.8	0.5%
BhB	Bethesda shaly clay loam, 0 to 8 percent slopes	155.9	4.0%
BhD	Bethesda shaly clay loam, 8 to 25 percent slopes	319.1	8.3%
BhE	Bethesda shaly clay loam, 25 to 40 percent slopes	39.5	1.0%
ChD	Clymer loam, 15 to 25 percent slopes	32.4	0.8%
CkC	Clymer silt loam, 8 to 15 percent slopes	35.8	0.9%
CoB	Coolville silt loam, 3 to 8 percent slopes	3.9	0.1%
Dol1A1	Doles silt loam, 0 to 2 percent slopes	71.6	1.9%
ErC	Ernest silt loam, 8 to 15 percent slopes	32.5	0.8%
ErD	Ernest silt loam, 15 to 25 percent slopes	3.4	0.1%
FaB	Fairpoint silty clay loam, 0 to 8 percent slopes	15.1	0.4%
FaD	Fairpoint silty clay loam, 8 to 25 percent slopes	4.1	0.1%
LhW1D2	Latham-Wharton silt loams, 15 to 25 percent slopes, eroded	132.8	3.4%
Omu1B1	Omulga silt loam, 2 to 6 percent slopes	210.8	5.5%
Omu1C1	Omulga silt loam, 6 to 12 percent slopes	338.8	8.8%
Pio1AF	Piopolis silt loam, 0 to 2 percent slopes, frequently flooded	258.8	6.7%
Pop1AF	Pope silt loam, 0 to 3 percent slopes, frequently flooded	32.4	0.8%
Rar1B1	Rarden silt loam, 3 to 8 percent slopes	17.1	0.4%
Rar1C2	Rarden silt loam, 8 to 15 percent slopes, eroded	112.2	2.9%
RgLXD1	Rigley-Latham complex, 15 to 25 percent slopes	20.9	0.5%

Jackson County, Ohio (OH079)			
Map Unit Symbol	Map Unit Name	Acres in AOI	Percent of AOI
RgLZE1	Rigley-Latham association, steep	4.3	0.1%
RmE	Rigley-Clymer association, steep	8.7	0.2%
RrW1C2	Rarden-Wharton silt loams, 8 to 15 percent slopes, eroded	126.3	3.3%
ShLZE1	Shelocta-Latham association, steep	128.8	3.3%
SkP1AF	Stokly-Philo silt loams, 0 to 3 percent slopes, frequently flooded	60.1	1.6%
Stn1AO	Stendal silt loam, 0 to 3 percent slopes, occasionally flooded	23.7	0.6%
TeB	Tilsit silt loam, 3 to 8 percent slopes	66.3	1.7%
TrA	Tygart silt loam, 0 to 3 percent slopes	35.9	0.9%
W	Water	50.0	1.3%
WeB	Wellston silt loam, 3 to 8 percent slopes	19.7	0.5%
WeC	Wellston silt loam, 8 to 15 percent slopes	11.9	0.3%
WhC	Wharton silt loam, 8 to 15 percent slopes	134.2	3.5%
WhD	Wharton silt loam, 15 to 25 percent slopes	875.3	22.7%
Wya1B1	Wyatt silt loam, 2 to 6 percent slopes	152.4	3.9%
Wya3C2	Wyatt silty clay loam, 6 to 12 percent slopes, eroded	229.7	5.9%
Wya3D2	Wyatt silty clay loam, 12 to 18 percent slopes, eroded	17.0	0.4%
<b>Totals for Area of Interest</b>		<b>3,864.2</b>	<b>100.0%</b>



Soil Map—Jackson County, Ohio  
(AEP Poston-Lick 138kV Transmission Line Rebuild Project)



Map projection: Web Mercator Corner coordinates: WGS84 Edge tics: UTM Zone 17N WGS84

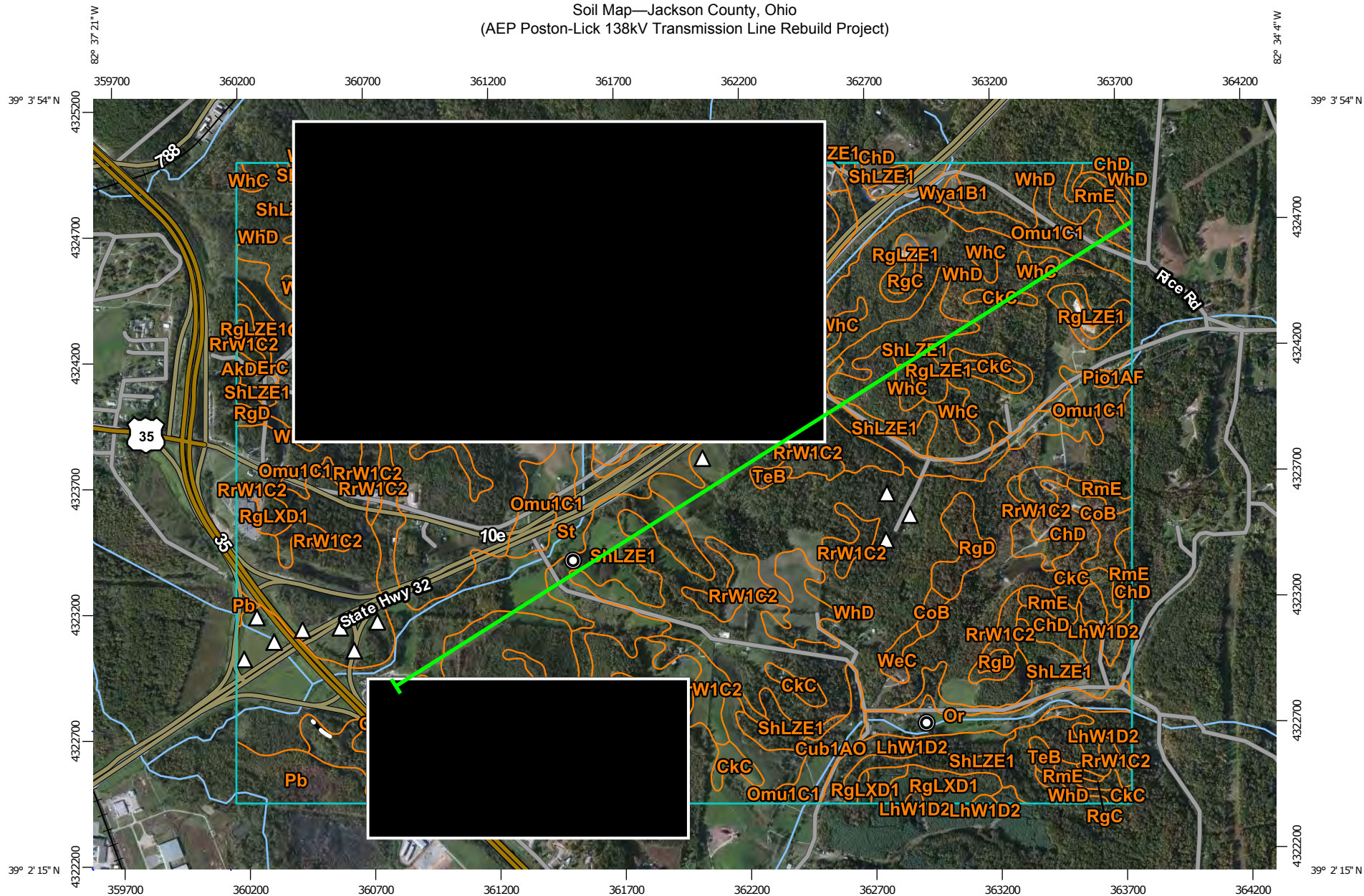
## Map Unit Legend

Jackson County, Ohio (OH079)			
Map Unit Symbol	Map Unit Name	Acres in AOI	Percent of AOI
AkB	Allegheny loam, 3 to 8 percent slopes	8.6	0.3%
AkC	Allegheny loam, 8 to 15 percent slopes	8.1	0.3%
ChD	Clymer loam, 15 to 25 percent slopes	295.8	10.8%
CkB	Clymer silt loam, 3 to 8 percent slopes	13.3	0.5%
CkC	Clymer silt loam, 8 to 15 percent slopes	125.8	4.6%
CoB	Coolville silt loam, 3 to 8 percent slopes	1.4	0.1%
Dol1A1	Doles silt loam, 0 to 2 percent slopes	35.2	1.3%
ErD	Ernest silt loam, 15 to 25 percent slopes	2.1	0.1%
LhW1D2	Latham-Wharton silt loams, 15 to 25 percent slopes, eroded	8.9	0.3%
Omu1A1	Omulga silt loam, 0 to 2 percent slopes	19.5	0.7%
Omu1B1	Omulga silt loam, 2 to 6 percent slopes	152.7	5.6%
Omu1C1	Omulga silt loam, 6 to 12 percent slopes	163.7	6.0%
Pio1AF	Piopolis silt loam, 0 to 2 percent slopes, frequently flooded	144.0	5.2%
Rar1B1	Rarden silt loam, 3 to 8 percent slopes	0.0	0.0%
RgC	Rigley sandy loam, 8 to 15 percent slopes	6.3	0.2%
RgD	Rigley sandy loam, 15 to 25 percent slopes	8.6	0.3%
RgLZE1	Rigley-Latham association, steep	79.3	2.9%
RmE	Rigley-Clymer association, steep	84.7	3.1%
RrW1C2	Rarden-Wharton silt loams, 8 to 15 percent slopes, eroded	41.5	1.5%
ShLZE1	Shelocta-Latham association, steep	152.2	5.5%
SkP1AF	Stokly-Philo silt loams, 0 to 3 percent slopes, frequently flooded	3.9	0.1%

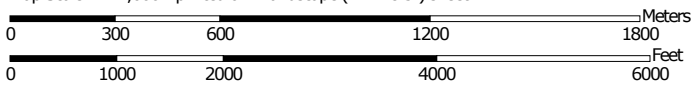
Jackson County, Ohio (OH079)			
Map Unit Symbol	Map Unit Name	Acres in AOI	Percent of AOI
St	Stendal silt loam, occasionally flooded	71.9	2.6%
Stn1AO	Stendal silt loam, 0 to 3 percent slopes, occasionally flooded	15.1	0.6%
W	Water	2.5	0.1%
WeB	Wellston silt loam, 3 to 8 percent slopes	8.1	0.3%
WhC	Wharton silt loam, 8 to 15 percent slopes	129.5	4.7%
WhD	Wharton silt loam, 15 to 25 percent slopes	886.2	32.2%
Wya1B1	Wyatt silt loam, 2 to 6 percent slopes	72.2	2.6%
Wya3C2	Wyatt silty clay loam, 6 to 12 percent slopes, eroded	193.0	7.0%
Wya3D2	Wyatt silty clay loam, 12 to 18 percent slopes, eroded	14.3	0.5%
<b>Totals for Area of Interest</b>		<b>2,748.6</b>	<b>100.0%</b>



Soil Map—Jackson County, Ohio  
(AEP Poston-Lick 138kV Transmission Line Rebuild Project)



Map Scale: 1:21,600 if printed on A landscape (11" x 8.5") sheet.



Map projection: Web Mercator Corner coordinates: WGS84 Edge tics: UTM Zone 17N WGS84



Natural Resources  
Conservation Service

Web Soil Survey  
National Cooperative Soil Survey

9/24/2015  
Page 1 of 4




## Map Unit Legend

Jackson County, Ohio (OH079)			
Map Unit Symbol	Map Unit Name	Acres in AOI	Percent of AOI
AkB	Allegheny loam, 3 to 8 percent slopes	3.2	0.1%
AkD	Allegheny loam, 15 to 25 percent slopes	0.2	0.0%
ChD	Clymer loam, 15 to 25 percent slopes	32.8	1.5%
CkC	Clymer silt loam, 8 to 15 percent slopes	44.1	2.0%
CoB	Coolville silt loam, 3 to 8 percent slopes	15.6	0.7%
Cub1AO	Cuba silt loam, 0 to 3 percent slopes, occasionally flooded	14.5	0.6%
ErC	Ernest silt loam, 8 to 15 percent slopes	1.6	0.1%
LhW1D2	Latham-Wharton silt loams, 15 to 25 percent slopes, eroded	208.6	9.2%
Omu1B1	Omulga silt loam, 2 to 6 percent slopes	46.5	2.1%
Omu1C1	Omulga silt loam, 6 to 12 percent slopes	146.4	6.5%
Or	Orrville silt loam, frequently flooded	23.1	1.0%
Pb	Piopolis silt loam, frequently flooded	47.5	2.1%
Pio1AF	Piopolis silt loam, 0 to 2 percent slopes, frequently flooded	1.9	0.1%
Rar1B1	Rarden silt loam, 3 to 8 percent slopes	6.9	0.3%
Rar1C2	Rarden silt loam, 8 to 15 percent slopes, eroded	3.0	0.1%
RcC	Richland silt loam, clayey substratum, 8 to 15 percent slopes	0.8	0.0%
RgC	Rigley sandy loam, 8 to 15 percent slopes	4.8	0.2%
RgD	Rigley sandy loam, 15 to 25 percent slopes	16.8	0.7%
RgLXD1	Rigley-Latham complex, 15 to 25 percent slopes	17.8	0.8%
RgLZE1	Rigley-Latham association, steep	51.8	2.3%
RmE	Rigley-Clymer association, steep	21.1	0.9%

Jackson County, Ohio (OH079)			
Map Unit Symbol	Map Unit Name	Acres in AOI	Percent of AOI
RrW1C2	Rarden-Wharton silt loams, 8 to 15 percent slopes, eroded	119.4	5.3%
ShLZE1	Shelocta-Latham association, steep	205.0	9.1%
St	Stendal silt loam, occasionally flooded	200.6	8.9%
TeB	Tilsit silt loam, 3 to 8 percent slopes	5.3	0.2%
WeC	Wellston silt loam, 8 to 15 percent slopes	4.9	0.2%
WhC	Wharton silt loam, 8 to 15 percent slopes	65.6	2.9%
WhD	Wharton silt loam, 15 to 25 percent slopes	940.5	41.7%
Wya1B1	Wyatt silt loam, 2 to 6 percent slopes	1.9	0.1%
Wya3C2	Wyatt silty clay loam, 6 to 12 percent slopes, eroded	4.8	0.2%
<b>Totals for Area of Interest</b>		<b>2,257.0</b>	<b>100.0%</b>

## MAP LEGEND

### Area of Interest (AOI)

 Area of Interest (AOI)

### Soils

 Soil Map Unit Polygons

 Soil Map Unit Lines

 Soil Map Unit Points

### Special Point Features



Blowout



Borrow Pit



Clay Spot



Closed Depression



Gravel Pit



Gravelly Spot



Landfill



Lava Flow



Marsh or swamp



Mine or Quarry



Miscellaneous Water



Perennial Water



Rock Outcrop



Saline Spot



Sandy Spot



Severely Eroded Spot



Sinkhole



Slide or Slip



Sodic Spot



Spoil Area



Stony Spot



Very Stony Spot



Wet Spot



Other



Special Line Features

### Water Features



Streams and Canals

### Transportation



Rails



Interstate Highways



US Routes



Major Roads



Local Roads

### Background



Aerial Photography

## MAP INFORMATION

The soil surveys that comprise your AOI were mapped at 1:15,800.

Please rely on the bar scale on each map sheet for map measurements.

Source of Map: Natural Resources Conservation Service

Web Soil Survey URL: <http://websoilsurvey.nrcs.usda.gov>

Coordinate System: Web Mercator (EPSG:3857)

Maps from the Web Soil Survey are based on the Web Mercator projection, which preserves direction and shape but distorts distance and area. A projection that preserves area, such as the Albers equal-area conic projection, should be used if more accurate calculations of distance or area are required.

This product is generated from the USDA-NRCS certified data as of the version date(s) listed below.

Soil Survey Area: Jackson County, Ohio

Survey Area Data: Version 13, Sep 18, 2014

Soil map units are labeled (as space allows) for map scales 1:50,000 or larger.

Date(s) aerial images were photographed: Oct 6, 2011—Oct 7, 2011

The orthophoto or other base map on which the soil lines were compiled and digitized probably differs from the background imagery displayed on these maps. As a result, some minor shifting of map unit boundaries may be evident.



## **APPENDIX B**

### Photographs

**Client Name:**  
American Electric Power (AEP)

**Project Name:**  
Poston – Lick 138kV Transmission Line Rebuild Project

**Photo Location:**  
Athens County, Ohio

**Photo No. 1**

**Date:**

July 20, 2015

**Description:**

Wetland W1, facing west. No direct wetland impact is anticipated.



**Photo No. 2**

**Date:**

July 20, 2015

**Description:**

Ephemeral stream S1, facing east toward lattice tower 1. No direct stream impact is anticipated.





**Client Name:**  
American Electric Power (AEP)

**Project Name:**  
Poston – Lick 138kV Transmission Line Rebuild Project

**Photo Location:**  
Athens County, Ohio

**Photo No. 3**

**Date:**

July 20, 2015

**Description:**

Wetland W2, facing southwest toward structure 1B. No direct wetland impact is anticipated.



**Photo No. 4**

**Date:**

July 20, 2015

**Description:**

Perennial stream S2 (Hamley Run), facing east. No direct stream impact is anticipated.





**Client Name:**  
American Electric Power (AEP)

**Project Name:**  
Poston – Lick 138kV Transmission Line Rebuild Project

**Photo Location:**  
Athens County, Ohio

**Photo No. 5**

**Date:**

July 20, 2015

**Description:**

Perennial stream S3, facing east. No direct stream impact is anticipated.



**Photo No. 6**

**Date:**

July 20, 2015

**Description:**

Intermittent stream S4, facing west. It is anticipated that this narrow stream will be crossed above the OHWM by timber mat to gain access to the locations for proposed poles 2b, 2c, and 3. No direct stream impact is anticipated.





**Client Name:**  
American Electric Power (AEP)

**Project Name:**  
Poston – Lick 138kV Transmission Line Rebuild Project

**Photo Location:**  
Athens County, Ohio

**Photo No. 7**

**Date:**

July 21, 2015

**Description:**

Intermittent stream S5,  
facing southeast. No  
direct stream impact is  
anticipated.



**Photo No. 8**

**Date:**

July 21, 2015

**Description:**

Intermittent stream  
S6, facing northwest.  
No direct stream  
impact is anticipated.





**Client Name:**  
American Electric Power (AEP)

**Project Name:**  
Poston – Lick 138kV Transmission Line Rebuild Project

**Photo Location:**  
Athens County, Ohio

**Photo No. 9**

**Date:**

July 21, 2015

**Description:**

Wetland W3, north of proposed pole 4, facing east. No direct wetland impact is anticipated.



**Photo No. 10**

**Date:**

July 21, 2015

**Description:**

Wetland W4, west of proposed pole 4, facing southwest. No direct wetland impact is anticipated.





**Client Name:**  
American Electric Power (AEP)

**Project Name:**  
Poston – Lick 138kV Transmission Line Rebuild Project

**Photo Location:**  
Athens County, Ohio

**Photo No. 11**

**Date:**

July 21, 2015

**Description:**

Wetland W5, facing south. It is anticipated that the wetland, located in the middle of an old access road, will be temporarily impacted by timber mat placed in the wetland to gain access to the location for proposed pole 4.



**Photo No. 12**

**Date:**

July 21, 2015

**Description:**

Ephemeral stream S7, facing northwest. No direct stream impact is anticipated.





**Client Name:**  
American Electric Power (AEP)

**Project Name:**  
Poston – Lick 138kV Transmission Line Rebuild Project

**Photo Location:**  
Athens County, Ohio

**Photo No. 13**

**Date:**

July 21, 2015

**Description:**

Ephemeral stream S8, facing east. It is anticipated that this is a non-jurisdictional, concrete stream and it will be crossed by timber mat placed in the stream to gain access to the location for proposed pole 4.



**Photo No. 14**

**Date:**

**Description:**

Ephemeral stream S9, facing southeast. No direct stream impact is anticipated.





**Client Name:**  
American Electric Power (AEP)

**Project Name:**  
Poston – Lick 138kV Transmission Line Rebuild Project

**Photo Location:**  
Athens County, Ohio

**Photo No. 15**

**Date:**

July 21, 2015

**Description:**

Wetland W6, facing northwest from S2. It is anticipated that this floodplain wetland may be permanently impacted by the installation of the south concrete foundation for proposed pole 5.



**Photo No. 16**

**Date:**

July 21, 2015

**Description:**

Perennial stream S10, facing southwest. No direct stream impact is anticipated.





**Client Name:**  
American Electric Power (AEP)

**Project Name:**  
Poston – Lick 138kV Transmission Line Rebuild Project

**Photo Location:**  
Athens County, Ohio

**Photo No. 17**

**Date:**

July 21, 2015

**Description:**

Ephemeral stream  
S11, facing southeast.  
No direct stream  
impact is anticipated.



**Photo No. 18**

**Date:**

July 21, 2015

**Description:**

Wetland W7, facing  
southwest toward  
Salem Road. No direct  
wetland impact is  
anticipated.





**Client Name:**  
American Electric Power (AEP)

**Project Name:**  
Poston – Lick 138kV Transmission Line Rebuild Project

**Photo Location:**  
Athens County, Ohio

**Photo No. 19**

**Date:**

July 21, 2015

**Description:**

Wetland W8, facing southeast. No direct wetland impact is anticipated.



**Photo No. 20**

**Date:**

July 21, 2015

**Description:**

Intermittent stream S12, facing southwest. No direct stream impact is anticipated.





**Client Name:**  
American Electric Power (AEP)

**Project Name:**  
Poston – Lick 138kV Transmission Line Rebuild Project

**Photo Location:**  
Athens County, Ohio

**Photo No. 21**

**Date:**

July 22, 2015

**Description:**

Ephemeral stream S13, facing southwest. No direct stream impact is anticipated. The stream appears to have been impacted by recent logging activities.



**Photo No. 22**

**Date:**

July 22, 2015

**Description:**

Ephemeral stream S14, facing northeast. No direct stream impact is anticipated.





**Client Name:**  
American Electric Power (AEP)

**Project Name:**  
Poston – Lick 138kV Transmission Line Rebuild Project

**Photo Location:**  
Athens County, Ohio

**Photo No. 23**

**Date:**

July 22, 2015

**Description:**

Ephemeral stream S15, facing northeast toward pole 10. No direct stream impact is anticipated.



**Photo No. 24**

**Date:**

July 22, 2015

**Description:**

Ephemeral stream S16, facing southeast. No direct stream impact is anticipated.





**Client Name:**  
American Electric Power (AEP)

**Project Name:**  
Poston – Lick 138kV Transmission Line Rebuild Project

**Photo Location:**  
Athens County, Ohio

**Photo No. 25**

**Date:**

July 22, 2015

**Description:**

Ephemeral stream  
S17, facing east. No  
direct stream impact  
is anticipated.



**Photo No. 26**

**Date:**

July 22, 2015

**Description:**

Intermittent stream  
S18, facing  
southeast. No direct  
stream impact is  
anticipated.





**Client Name:**  
American Electric Power (AEP)

**Project Name:**  
Poston – Lick 138kV Transmission Line Rebuild Project

**Photo Location:**  
Athens County, Ohio

**Photo No. 27**

**Date:**

July 22, 2015

**Description:**

Intermittent stream  
S19, facing  
southwest. No direct  
stream impact is  
anticipated.



**Photo No. 28**

**Date:**

July 22, 2015

**Description:**

Ephemeral stream  
S20, facing east  
toward S19. No direct  
stream impact is  
anticipated.





**Client Name:**  
American Electric Power (AEP)

**Project Name:**  
Poston – Lick 138kV Transmission Line Rebuild Project

**Photo Location:**  
Athens County, Ohio

**Photo No. 29**

**Date:**

July 22, 2015

**Description:**

Intermittent stream S21, facing south. The stream is outside of the right of way but within a proposed access route. It is anticipated that this narrow stream will be crossed above the OHWM by timber mat to gain access to the location for proposed pole 11. The stream has been impacted by recent logging activities. No direct stream impact is anticipated.



**Photo No. 30**

**Date:**

July 22, 2015

**Description:**

Ephemeral stream S22, facing east. The stream is outside of the right of way but within a proposed access route. It is anticipated that this narrow, shallow stream will be bridged by timber mat to gain access to the location for proposed pole 11. The stream has been impacted by recent logging activities. No direct stream impact is anticipated.





**Client Name:**  
American Electric Power (AEP)

**Project Name:**  
Poston – Lick 138kV Transmission Line Rebuild Project

**Photo Location:**  
Athens County, Ohio

**Photo No. 31**

**Date:**

July 22, 2015

**Description:**

Pond P1 (left), facing northeast toward pole 11. No direct pond impact is anticipated.



**Photo No. 32**

**Date:**

July 22, 2015

**Description:**

Ephemeral stream S23, facing north toward P1. No direct stream impact is anticipated.





**Client Name:**  
American Electric Power (AEP)

**Project Name:**  
Poston – Lick 138kV Transmission Line Rebuild Project

**Photo Location:**  
Athens County, Ohio

**Photo No. 33**

**Date:**

July 22, 2015

**Description:**

Ephemeral stream S24, facing north toward P1 (not visible). No direct stream impact is anticipated.



**Photo No. 34**

**Date:**

July 22, 2015

**Description:**

Ephemeral stream S25, facing north. The stream is culverted and the culverted crossing will be used to access the location for proposed pole 12. No direct stream impact is anticipated.





**Client Name:**  
American Electric Power (AEP)

**Project Name:**  
Poston – Lick 138kV Transmission Line Rebuild Project

**Photo Location:**  
Athens County, Ohio

**Photo No. 35**

**Date:**

July 22, 2015

**Description:**

Pond P2, facing northeast toward pole structure 13. No direct pond impact is anticipated.



**Photo No. 36**

**Date:**

July 22, 2015

**Description:**

South side of P2, facing southwest. Wetland W9, which is in the background on the left side of the photo, accepts drainage from P2. No direct wetland impact is anticipated.





**Client Name:**  
American Electric Power (AEP)

**Project Name:**  
Poston – Lick 138kV Transmission Line Rebuild Project

**Photo Location:**  
Athens County, Ohio

**Photo No. 37**

**Date:**

July 22, 2015

**Description:**

Intermittent stream S26, facing south. No direct stream impact is anticipated.



**Photo No. 38**

**Date:**

July 22, 2015

**Description:**

Intermittent stream S27, facing west. A culverted crossing of S27 located approximately 430 feet north of the surveyed point is anticipated to be used to gain access to the locations for proposed poles 17, 18, & 19. No direct stream impact is anticipated.





**Client Name:**  
American Electric Power (AEP)

**Project Name:**  
Poston – Lick 138kV Transmission Line Rebuild Project

**Photo Location:**  
Athens County, Ohio

**Photo No. 39**

**Date:**

July 22, 2015

**Description:**

Intermittent stream S28, facing northwest. It is anticipated that this shallow stream will be bridged by timber mat to gain access to the locations for proposed poles 18 and 19. No direct stream impact is anticipated.



**Photo No. 40**

**Date:**

July 23, 2015

**Description:**

Intermittent stream S29 (Factory Creek), facing west. No direct stream impact is anticipated.





**Client Name:**  
American Electric Power (AEP)

**Project Name:**  
Poston – Lick 138kV Transmission Line Rebuild Project

**Photo Location:**  
Athens County, Ohio

**Photo No. 41**

**Date:**

July 23, 2015

**Description:**

Wetland W10, facing north. This believed to be a Category 3 wetland. No direct wetland impact is anticipated.



**Photo No. 42**

**Date:**

July 23, 2015

**Description:**

Ephemeral stream S30, facing southwest. No direct stream impact is anticipated.





**Client Name:**  
American Electric Power (AEP)

**Project Name:**  
Poston – Lick 138kV Transmission Line Rebuild Project

**Photo Location:**  
Athens County, Ohio

**Photo No. 43**

**Date:**

July 23, 2015

**Description:**

Ephemeral stream  
S31, facing east. No  
direct stream impact  
is anticipated.



**Photo No. 44**

**Date:**

July 23, 2015

**Description:**

Ephemeral stream  
S32, facing east. No  
direct stream impact  
is anticipated.





**Client Name:**  
American Electric Power (AEP)

**Project Name:**  
Poston – Lick 138kV Transmission Line Rebuild Project

**Photo Location:**  
Athens County, Ohio

**Photo No. 45**

**Date:**

September 1, 2015

**Description:**

Wetland W11, facing east. No direct wetland impact is anticipated.



**Photo No. 46**

**Date:**

September 1, 2015

**Description:**

Ephemeral stream S34, facing southwest. The stream drains through a culvert to W11. No direct stream impact is anticipated.





**Client Name:**  
American Electric Power (AEP)

**Project Name:**  
Poston – Lick 138kV Transmission Line Rebuild Project

**Photo Location:**  
Vinton County, Ohio

**Photo No. 47**

**Date:**

September 2, 2015

**Description:**

Wetland W12, facing south. The wetland drains to S35. It is anticipated that this wetland, located in the middle of an old access road, will be temporarily impacted by timber mat placed in the wetland to gain access to the locations for proposed poles 52 and 53.



**Photo No. 48**

**Date:**

September 2, 2015

**Description:**

Ephemeral stream S35, facing west. No direct stream impact is anticipated.



**This foregoing document was electronically filed with the Public Utilities**

**Commission of Ohio Docketing Information System on**

**6/13/2016 5:27:32 PM**

**in**

**Case No(s). 16-0020-EL-BLN**

Summary: Letter of Notification Part 11 of 13 electronically filed by Mr. Hector Garcia on behalf of AEP Ohio Transmission Company