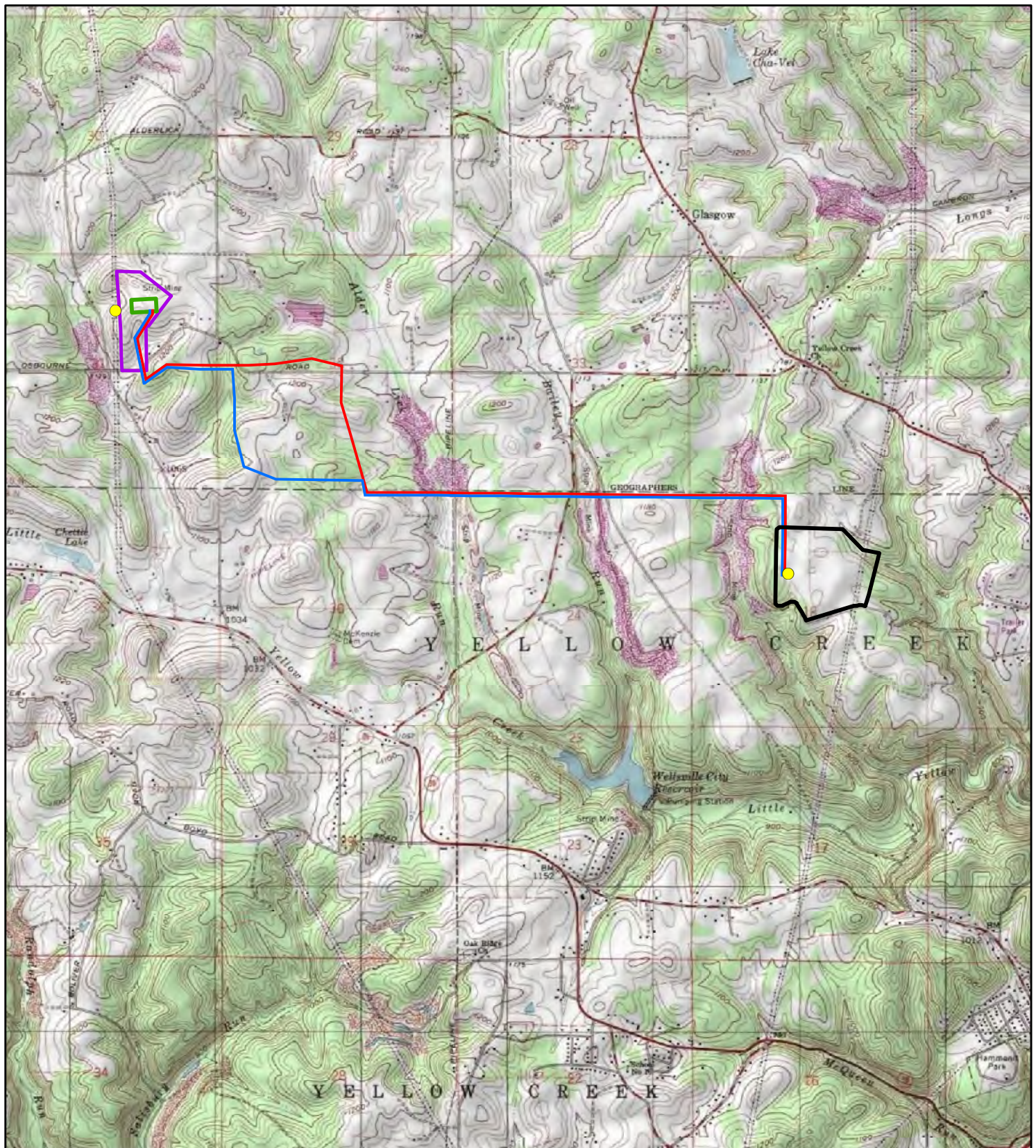


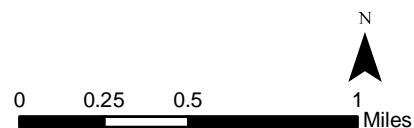
Figure – Section 2

- Figure 02-1: Project Location



Legend

- Point of Interconnection
- Preferred ROW Centerline
- Alternate ROW Centerline
- Generating Facility
- Switchyard Site
- SFE Switchyard



**Figure 02-1
Project Location**

South Field Energy
Columbiana County, Ohio

Figures – Section 3

- Figure 03-1: SFE Interconnection Facilities Location
- Figure 03-2: One-Line Diagram
- Figure 03-3: Schedule

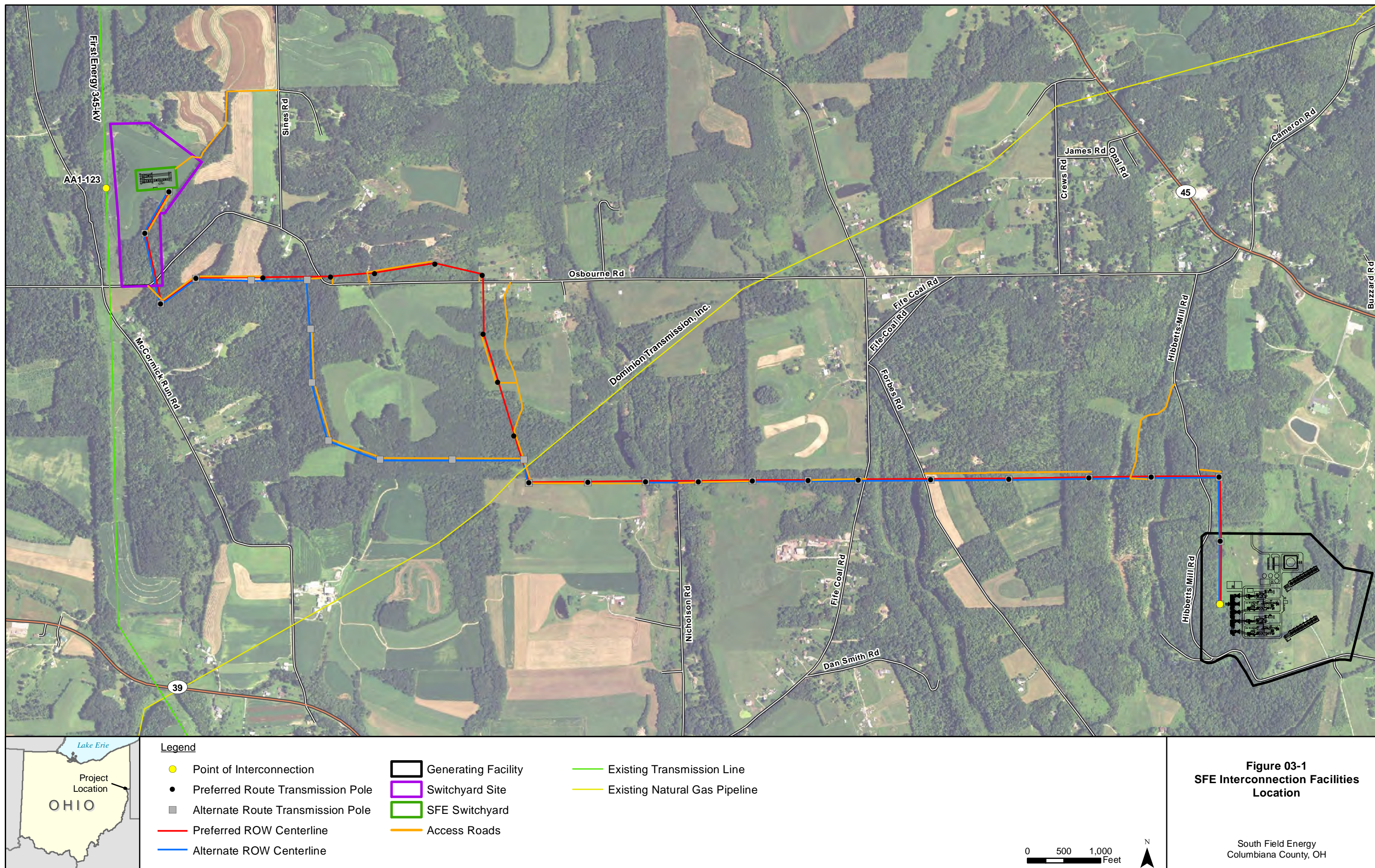
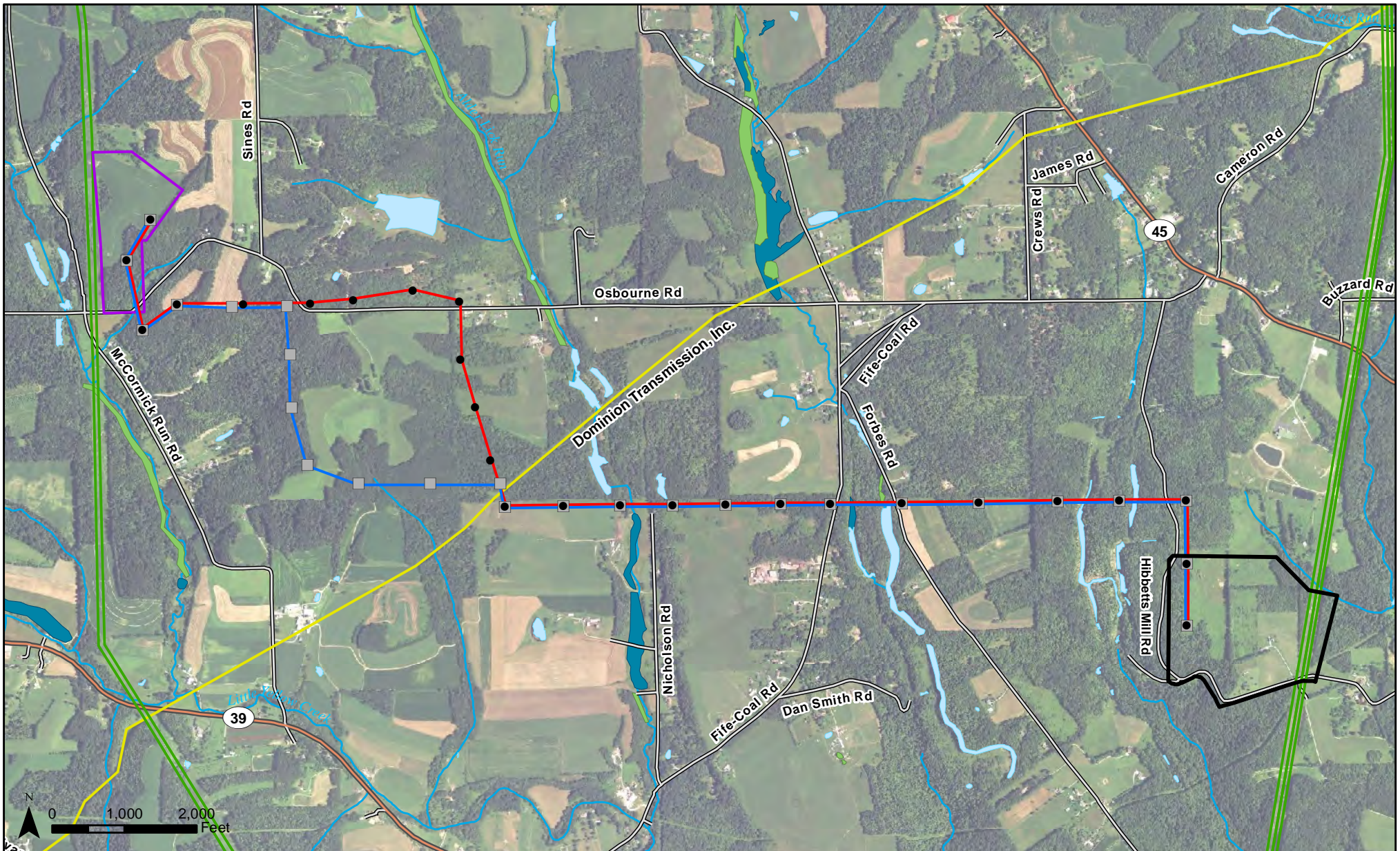


Figure – Section 4

- Figure 04-1: Routing Study Area



Legend

- | | | |
|---|--|---|
| — Preferred ROW Centerline | — Transmission Line | ■ NWI Wetlands |
| — Alternate ROW Centerline | — Natural Gas Pipeline | ■ Freshwater Emergent Wetland |
| Generating Facility | — Major Roads | ■ Freshwater Forested/Shrub Wetland |
| Switchyard Site | — Local Roads | ■ Freshwater Pond |
| | — NHD Streams | |

**Figure 04-1
Routing Study Area**

South Field Energy
Columbiana County, OH

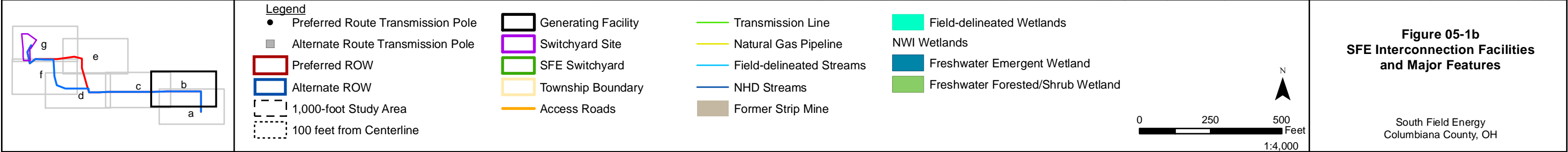
Figures – Section 5

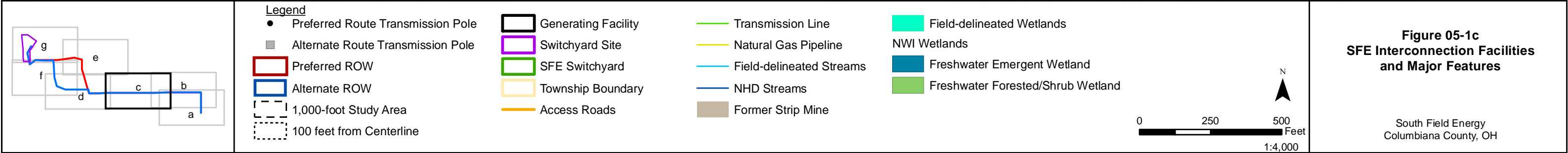
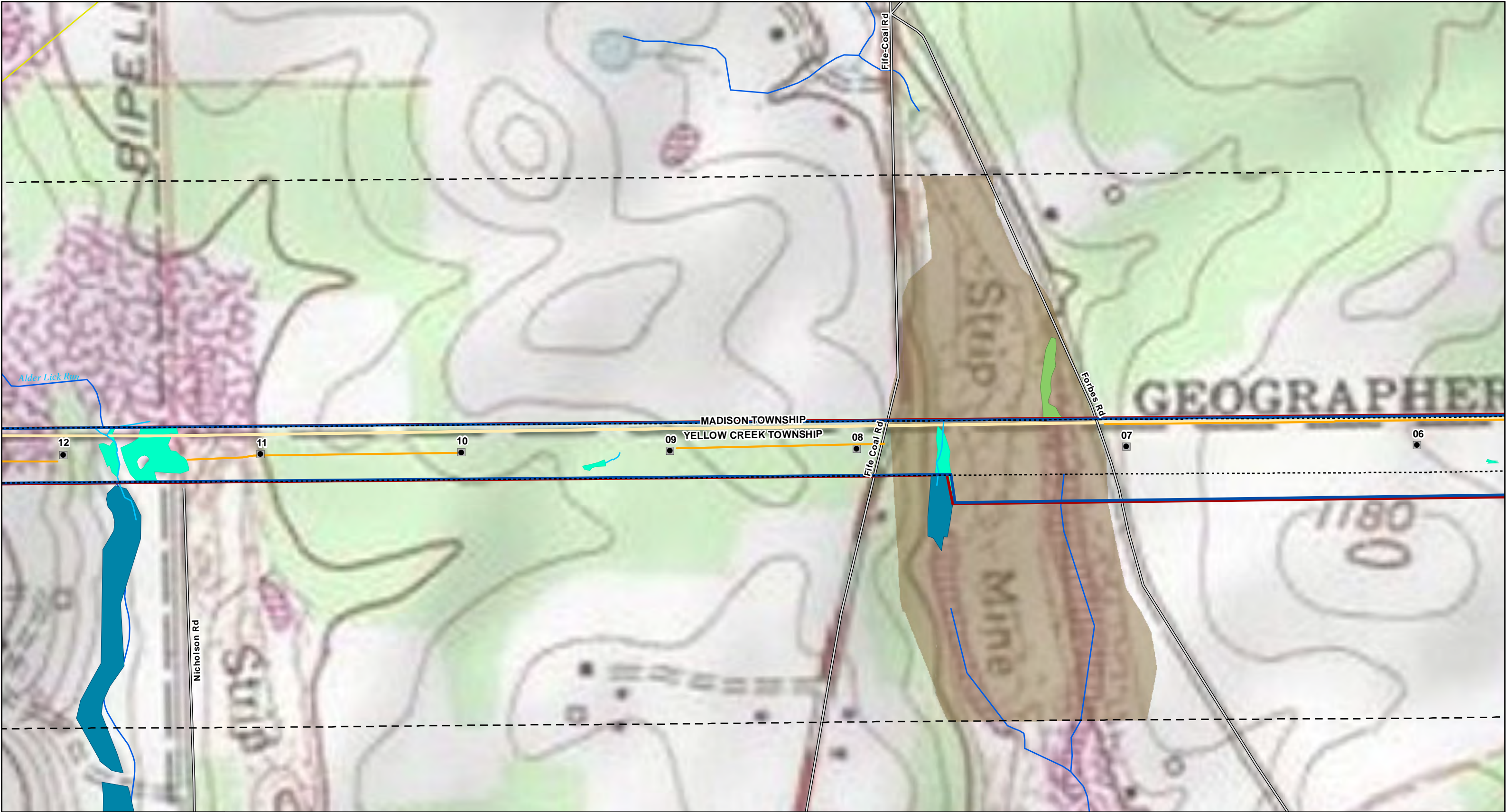
- Figure 05-1a through 05-1g: SFE Interconnection Facilities and Major Features
- Figure 05-2: SFE Switchyard Layout and Grading
- Figure 05-3: Tangent Configuration
- Figure 05-4: Light-Angle Configuration
- Figure 05-5: Dead End Structure

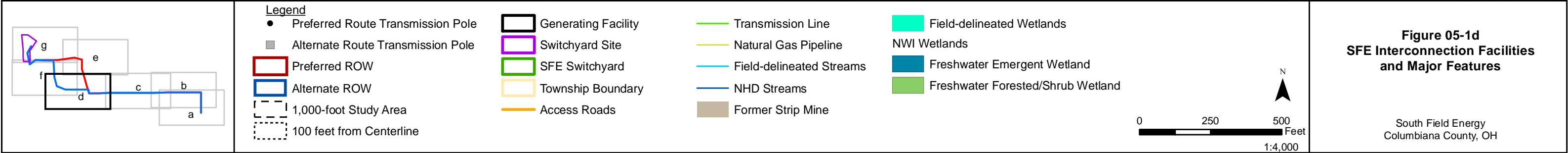
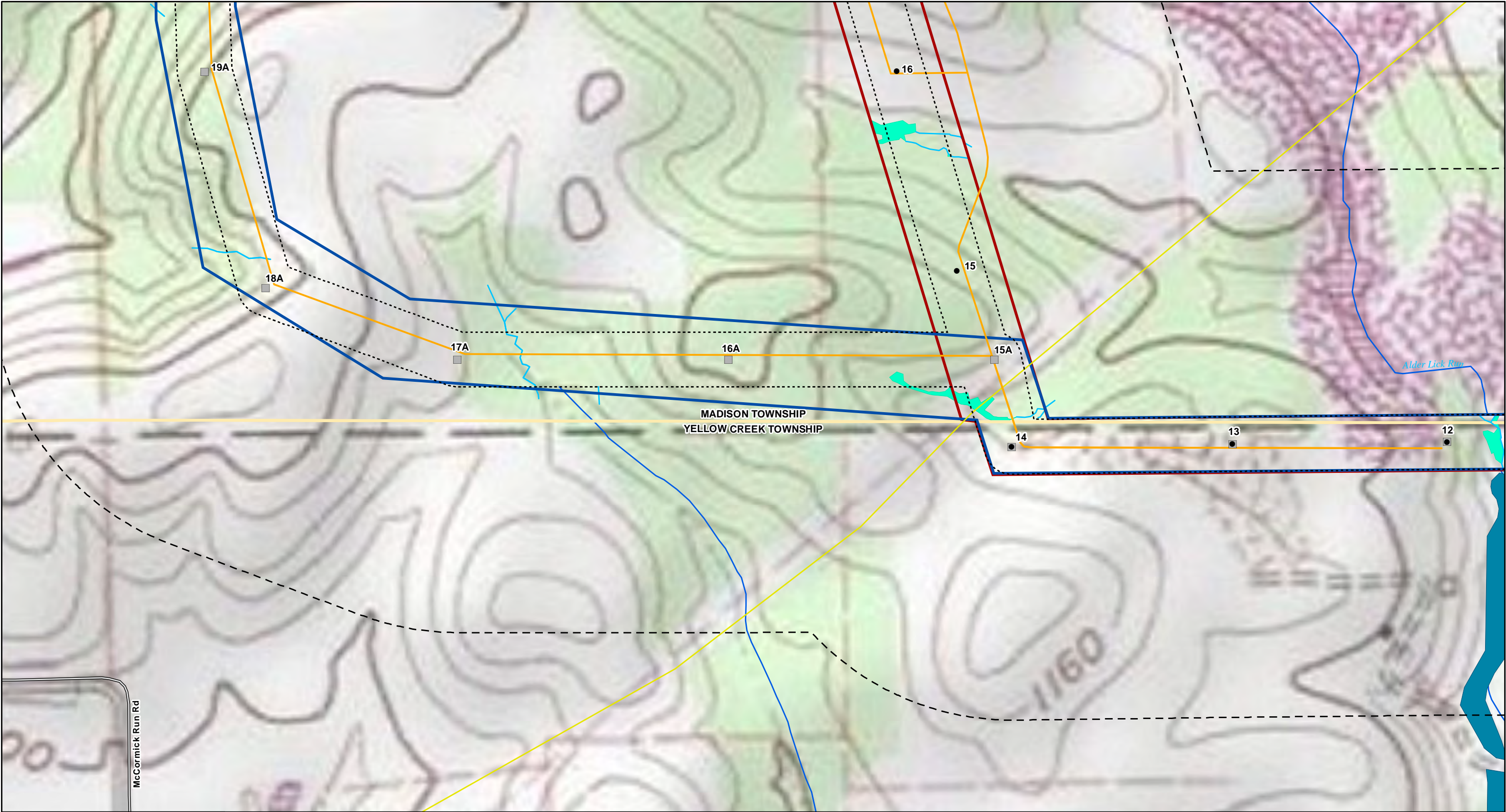


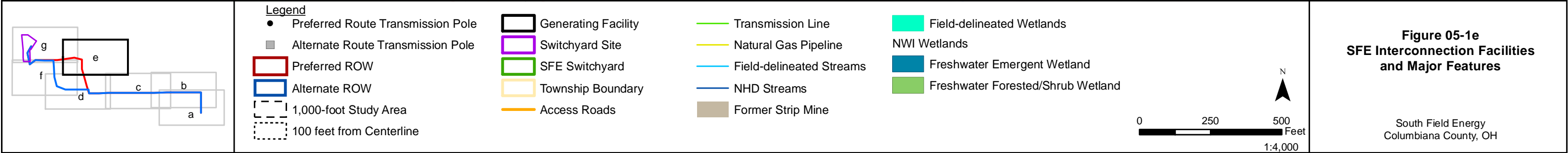
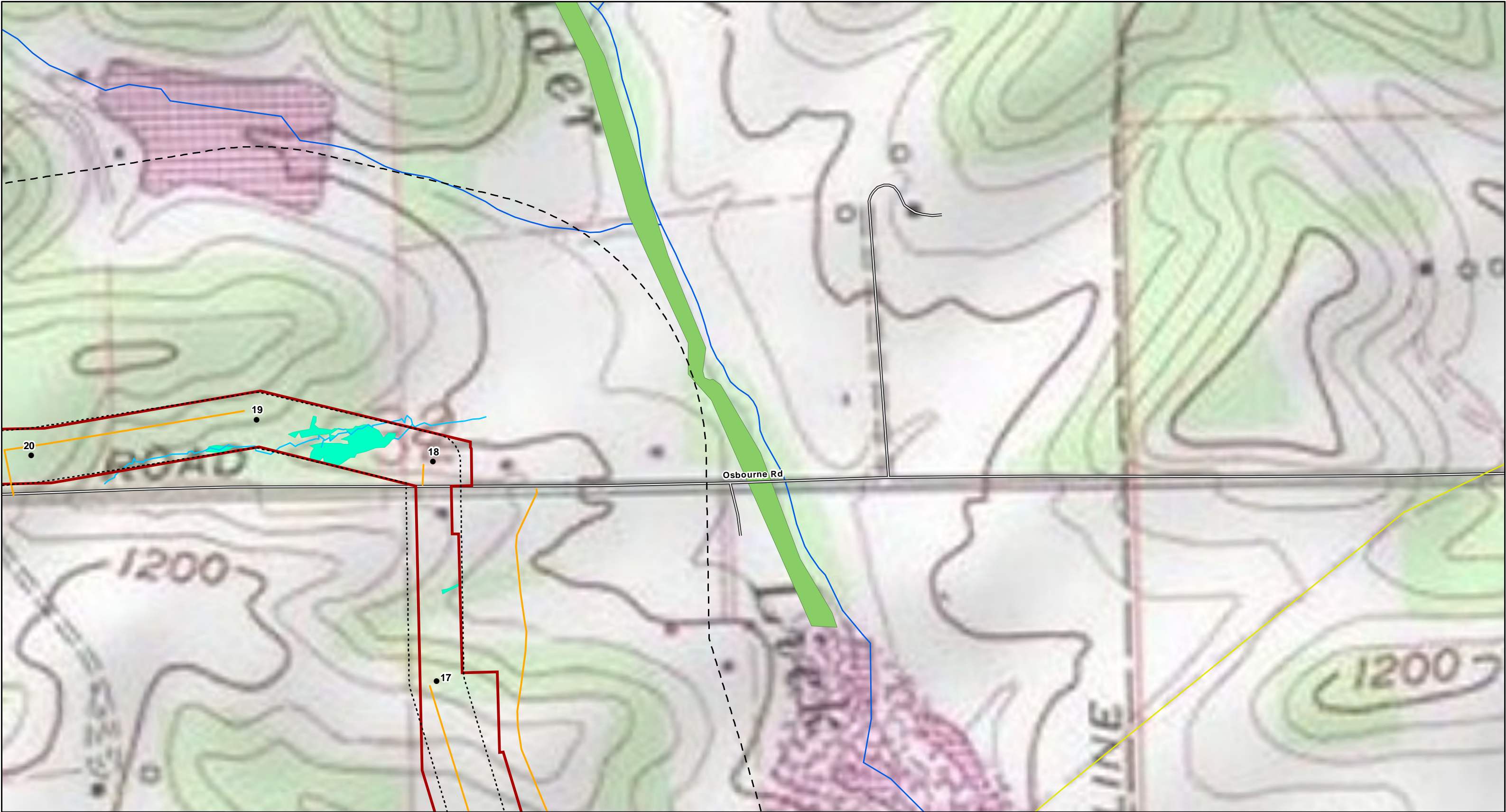
Figure 05-1a
SFE Interconnection Facilities
and Major Features

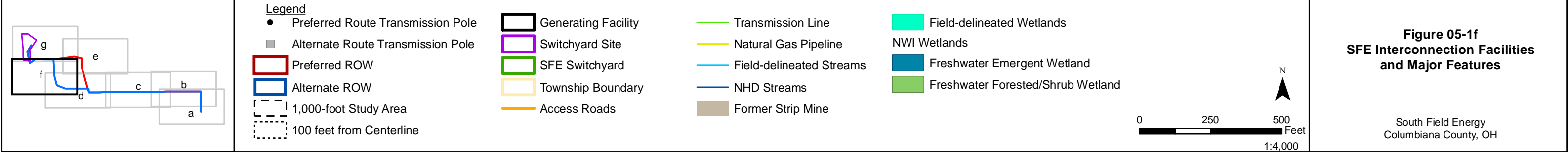
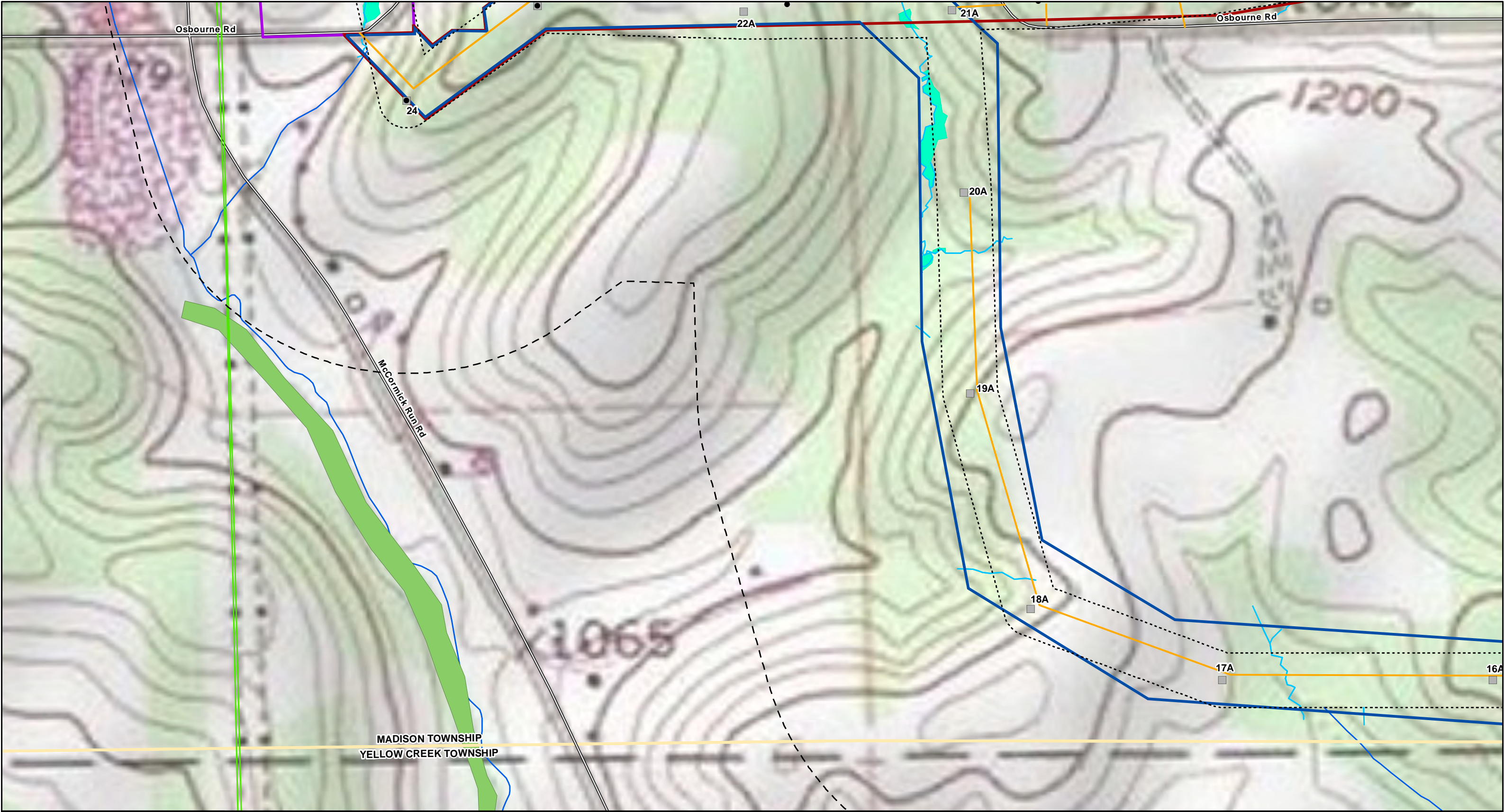
South Field Energy
Columbiana County, OH

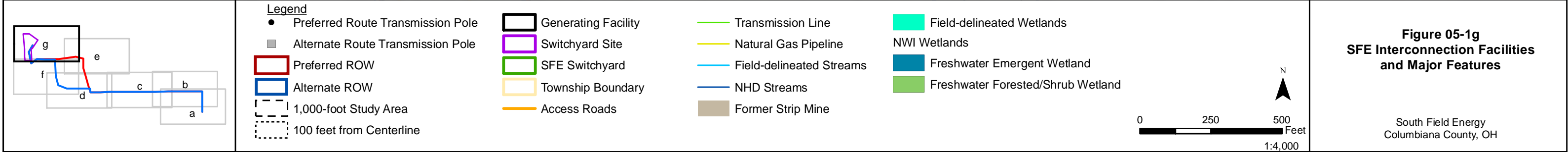
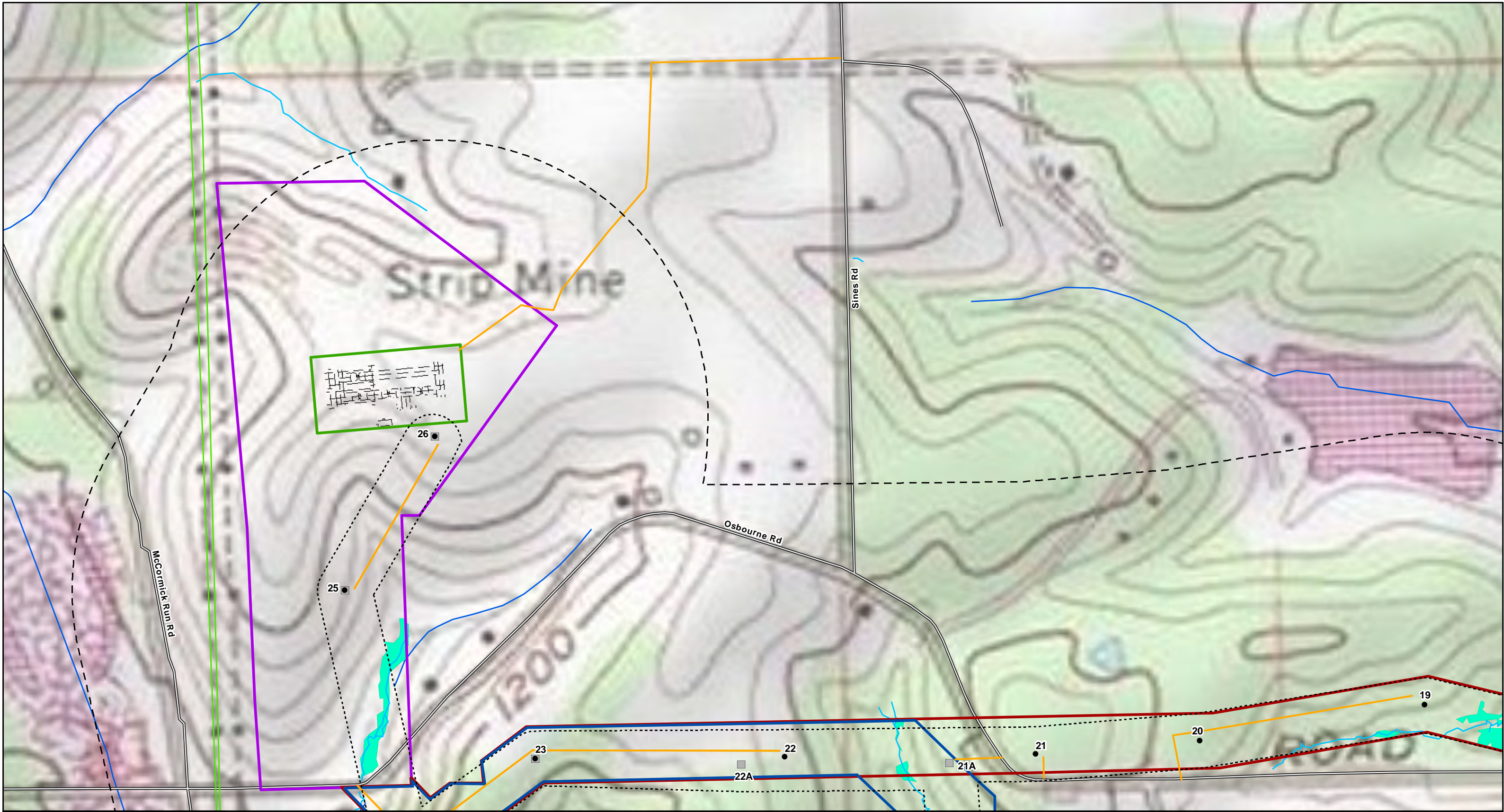










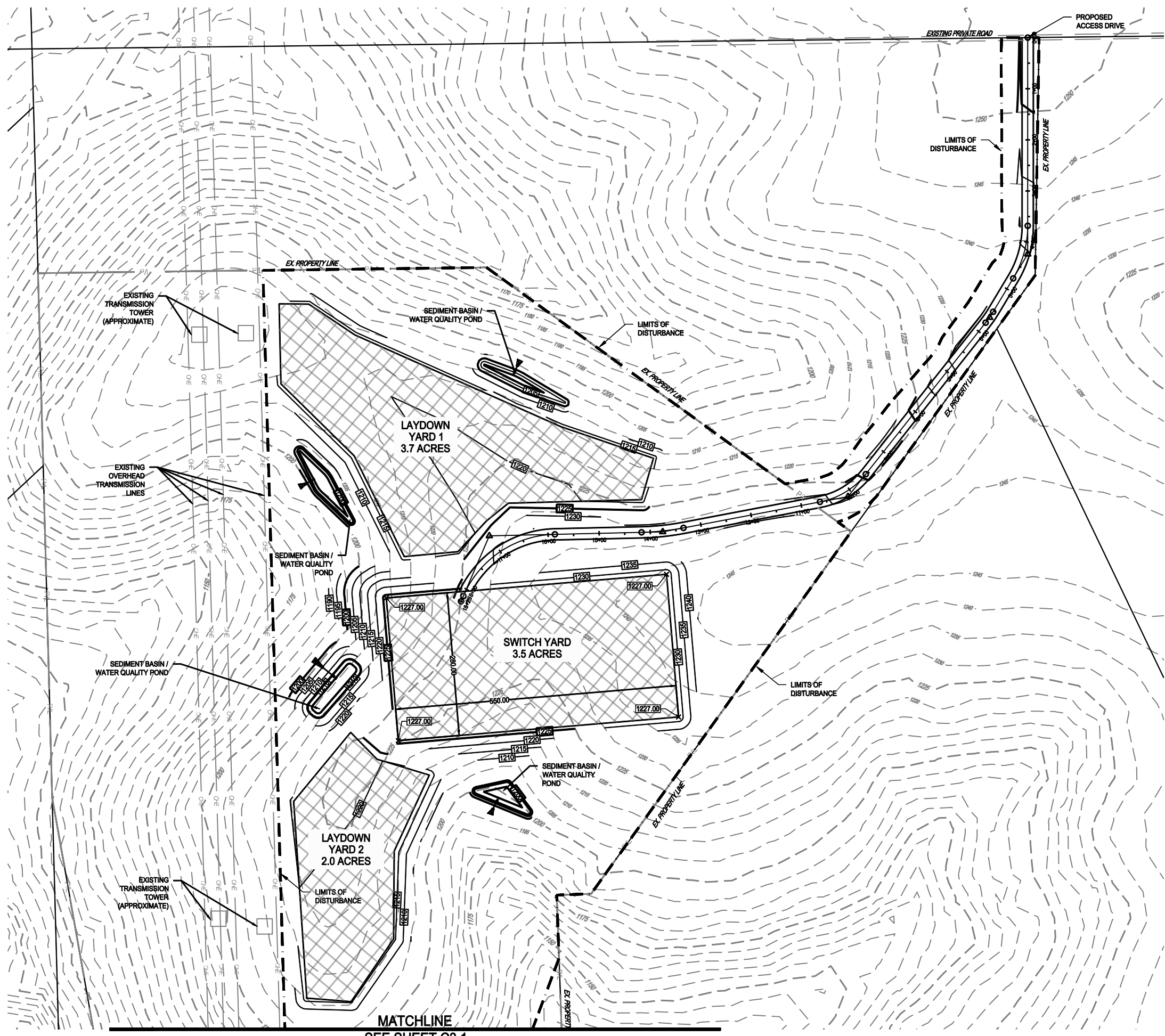




FINAL LAYOUT AND GRADING
ARE THE RESPONSIBILITY OF
THE EPC CONTRACTOR.
THESE PLANS ARE TO BE
USED FOR PERMIT ONLY AND
ARE NOT TO BE
CONSTRUCTED FROM

REVISIONS		DESCRIPTION
NO.	DATE	

NOT FOR
CONSTRUCTION



- LEGEND**
- EXISTING**
- P/L
 - ESMT
 - PROPERTY LINE
 - EASEMENT LINE
 - RIGHT OF WAY LINE
 - MAJOR CONTOUR
 - MINOR CONTOUR
- PROPOSED**
- 1230
 - 1232
 - MAJOR CONTOUR
 - MINOR CONTOUR
 - PAVEMENT
 - STORM SEWER

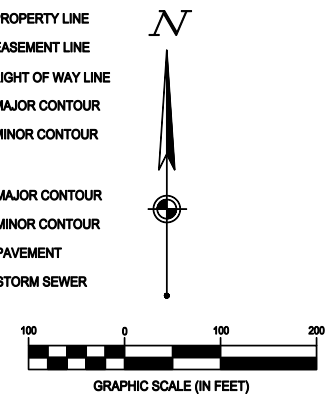
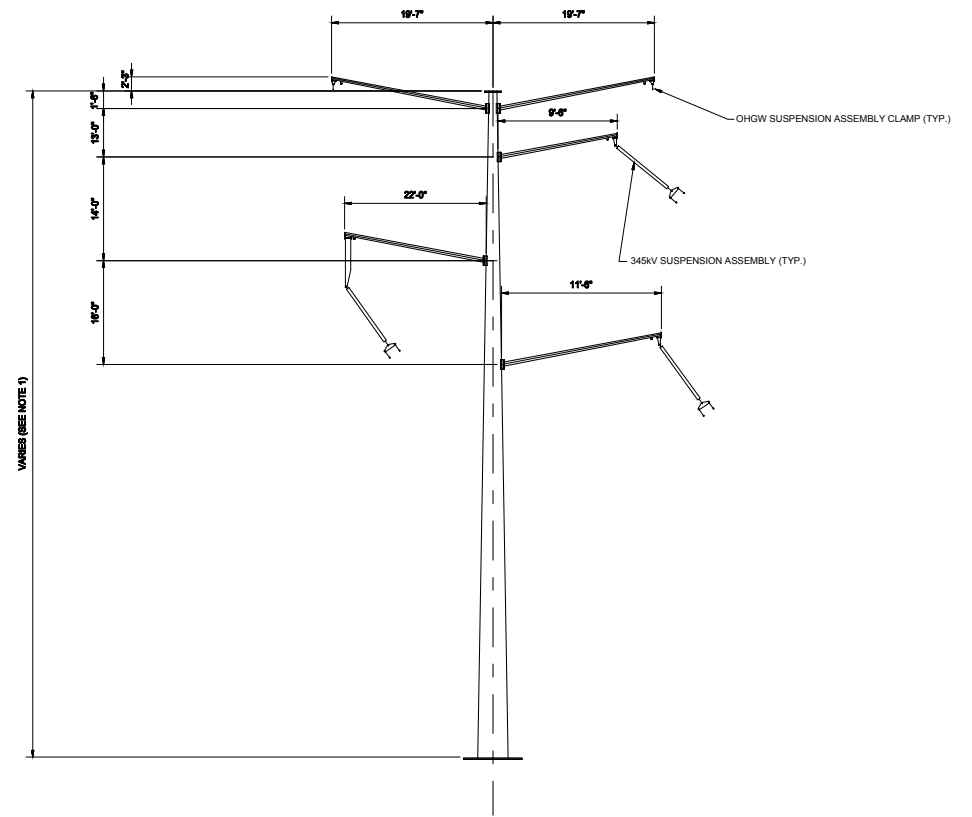


Figure 05-2
SFE Switchyard Layout
and Grading

South Field Energy
Columbiana County, Ohio



STEEL POLE TYPE - LIGHT ANGLE RT
N.T.S.

South Field Energy
Columbiana County, Ohio

DSGN	BRC	11/18/15
DRN	CSF	11/18/15
CKD	DAS	11/18/15
SCALE:		*
FOR PAGE TWO ONLY		



PLAN & PROFILE PRIMARY ROUTE _____	1001-1003
PLAN & PROFILE ALTERNATIVE ROUTE _____	2001-2003
PROJECT OVERVIEW MAP PRIMARY ROUTE _____	300-301
PROJECT OVERVIEW MAP ALTERNATE ROUTE _____	400-401

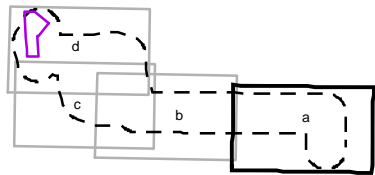
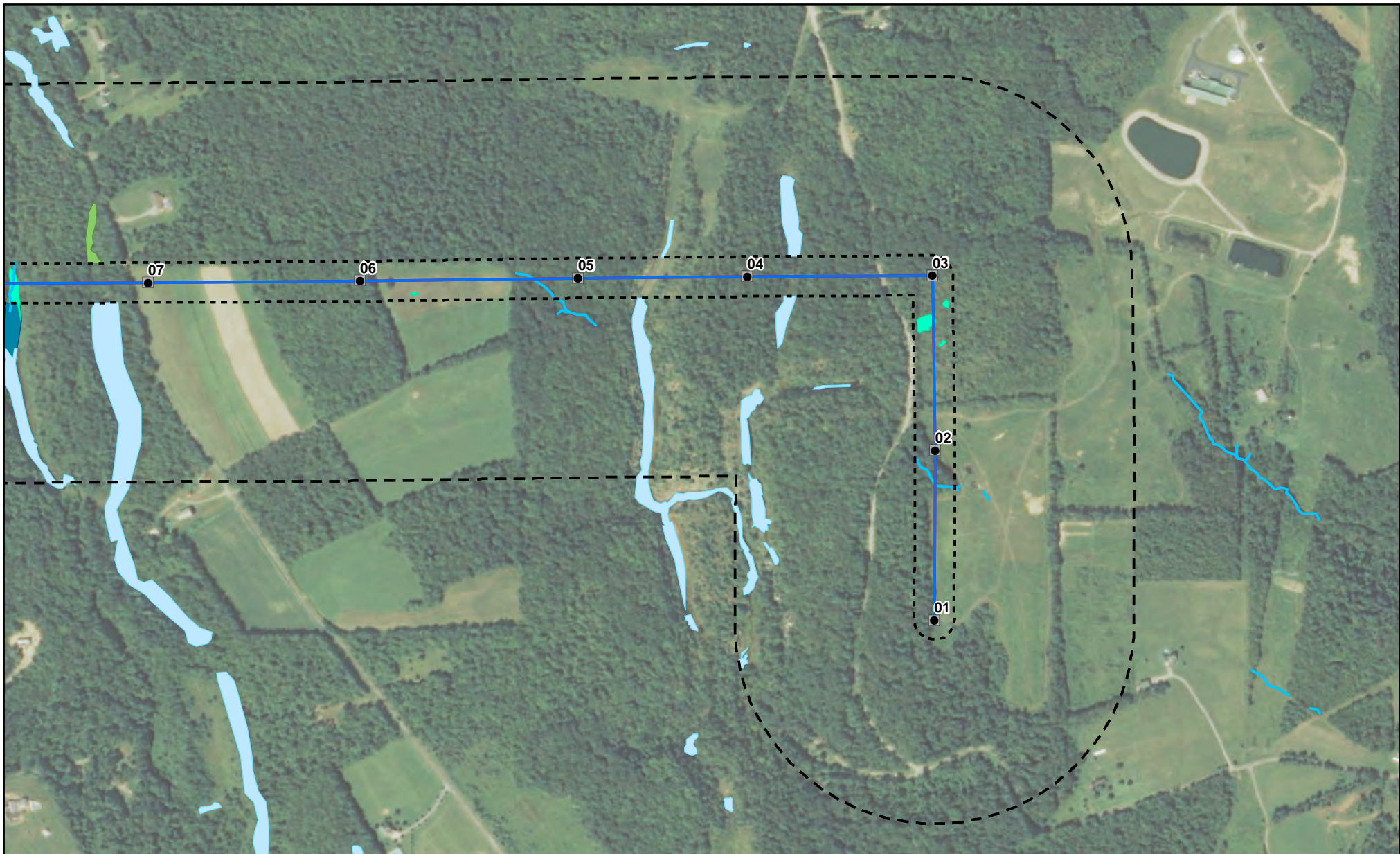
South Field Energy
Columbiana County, Ohio


**POWER
ENGINEERS**

							DGN	BRC	11/18/16
							DRN	CSF	11/18/16
							CKD	DAS	11/18/16
A	ISSUED FOR REVIEW	11/10/16	CSF	BRC	TJK	DAS	SCALE:		
REV	REVISIONS	DATE	DRN	DGN	CKD	APPD	REFERENCE DRAWINGS		
							FOR EACH DWG ONLY		

Figures – Section 7

- Figure 07-1a through 07-1d: Land Use, Cultural, Archeological, and Ecological Resources
- Figure 07-2: Land Use within the Study Area
- Figure 07-3: Agricultural Land
- Figure 07-4: Future Archeology Survey Areas



Legend

- Preferred Transmission Pole
- Alternate Transmission Pole
- Preferred ROW Centerline
- Alternate ROW Centerline
- Switchyard Site
- SFE Switchyard
- ⋯ 100 feet from Centerline
- ⬜ 1,000-foot Study Area
- Field-delineated Streams
- Field-delineated Wetlands
- NWI Wetlands
 - Freshwater Emergent Wetland
 - Freshwater Forested/Shrub Wetland
 - Freshwater Pond

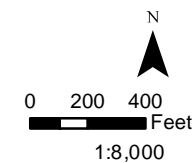
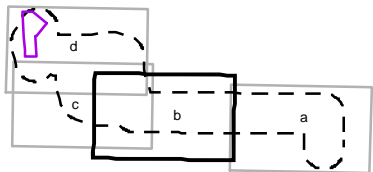
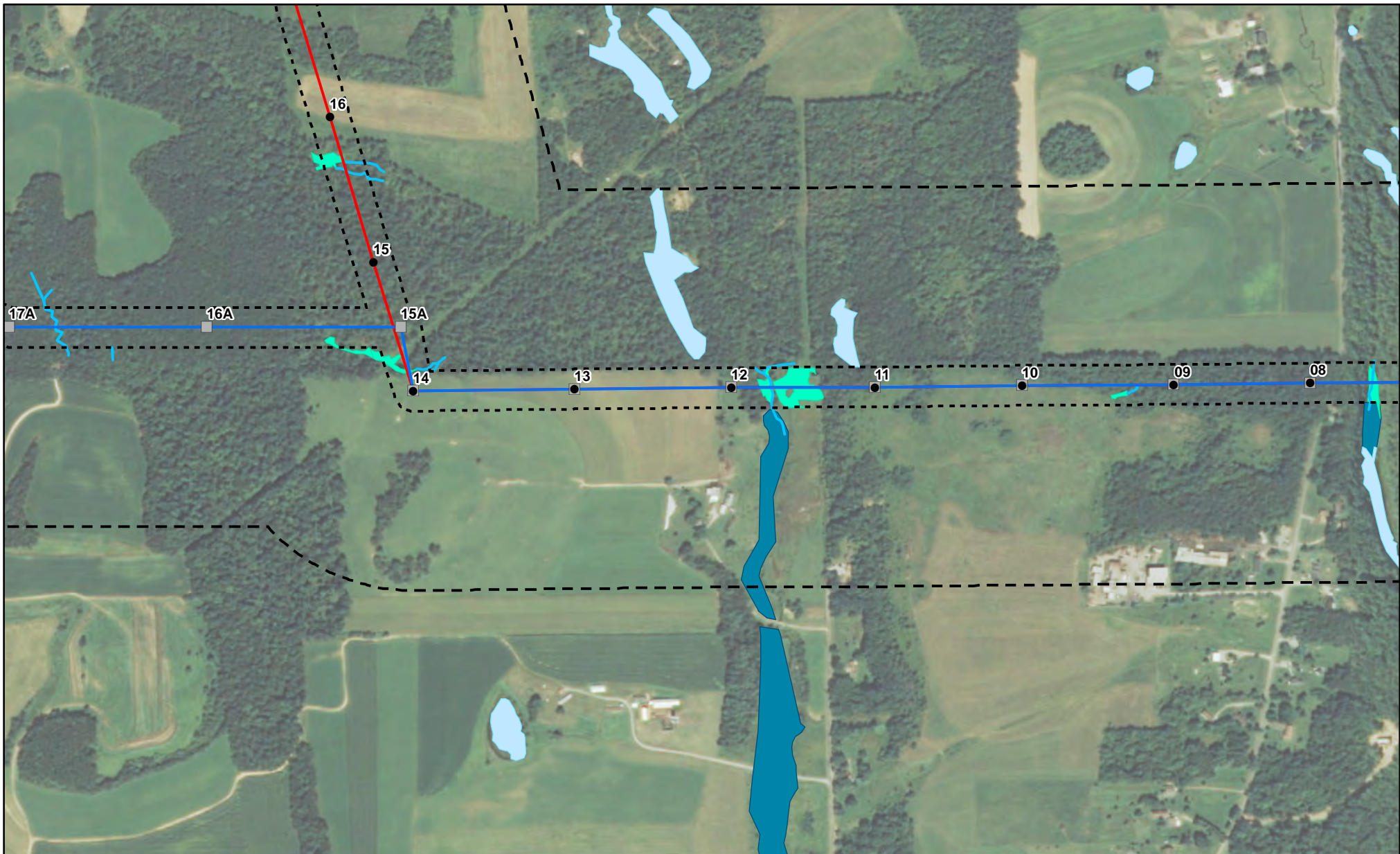


Figure 07-1a
Land Use, Cultural, Archaeological,
and Ecological Resources

South Field Energy
 Columbiana County, OH



Legend

- Preferred Transmission Pole
- Alternate Transmission Pole
- Preferred ROW Centerline
- Alternate ROW Centerline
- Switchyard Site
- SFE Switchyard
- 100 feet from Centerline

- 1,000-foot Study Area
- Field-delineated Streams
- Field-delineated Wetlands
- NWI Wetlands
 - Freshwater Emergent Wetland
 - Freshwater Forested/Shrub Wetland
 - Freshwater Pond

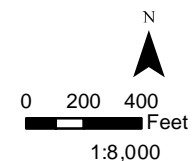
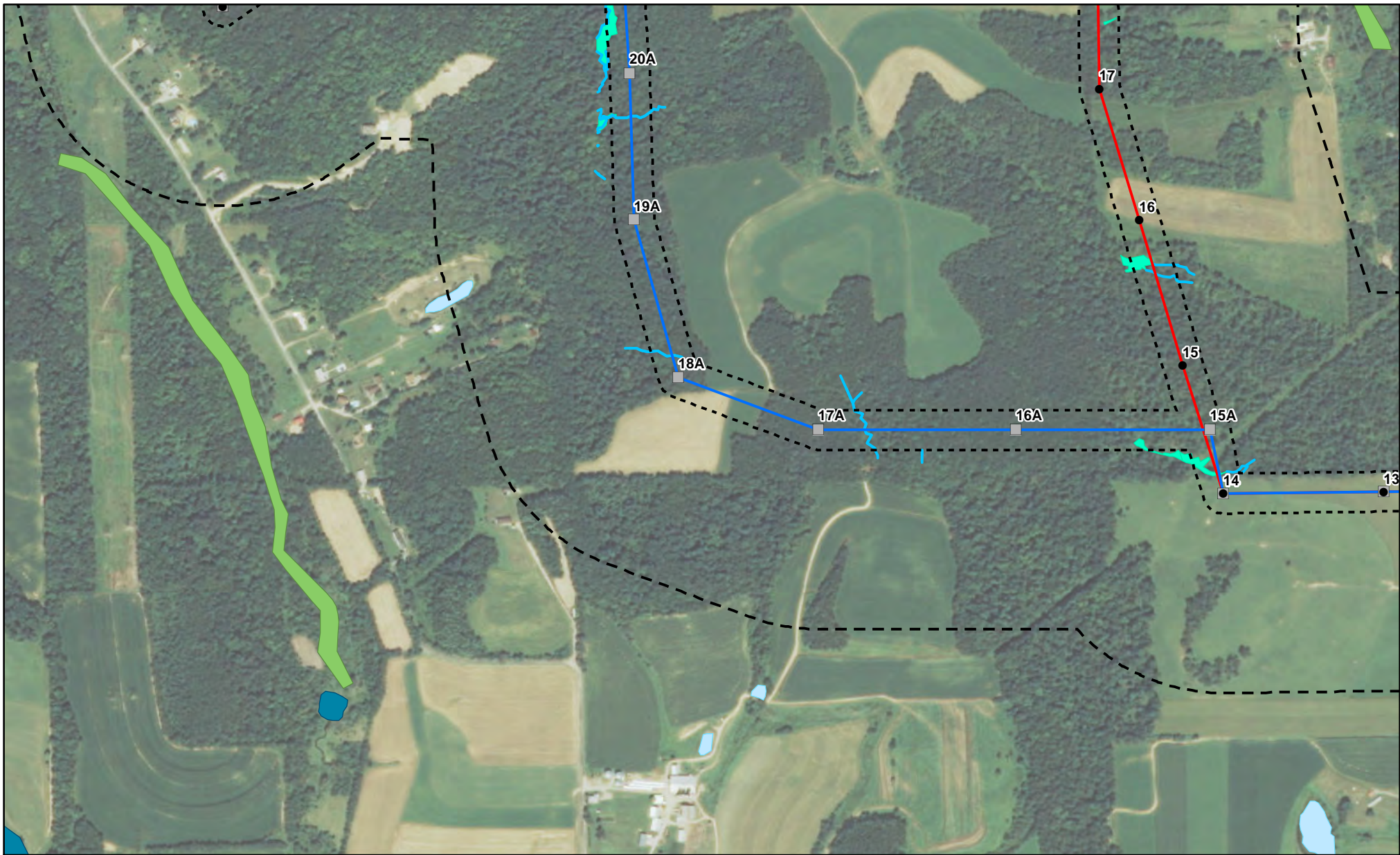


Figure 07-1b
Land Use, Cultural, Archaeological,
and Ecological Resources

South Field Energy
 Columbiana County, OH



Legend

- Preferred Transmission Pole
- Alternate Transmission Pole
- Preferred ROW Centerline
- Alternate ROW Centerline
- Switchyard Site
- SFE Switchyard
- - - 100 feet from Centerline

- 1,000-foot Study Area
- Field-delineated Streams
- Field-delineated Wetlands
- NWI Wetlands
- Freshwater Emergent Wetland
- Freshwater Forested/Shrub Wetland
- Freshwater Pond

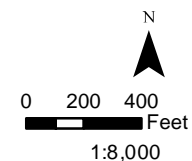
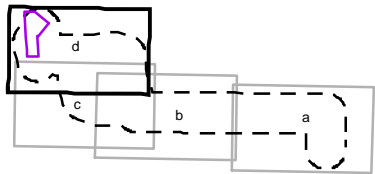
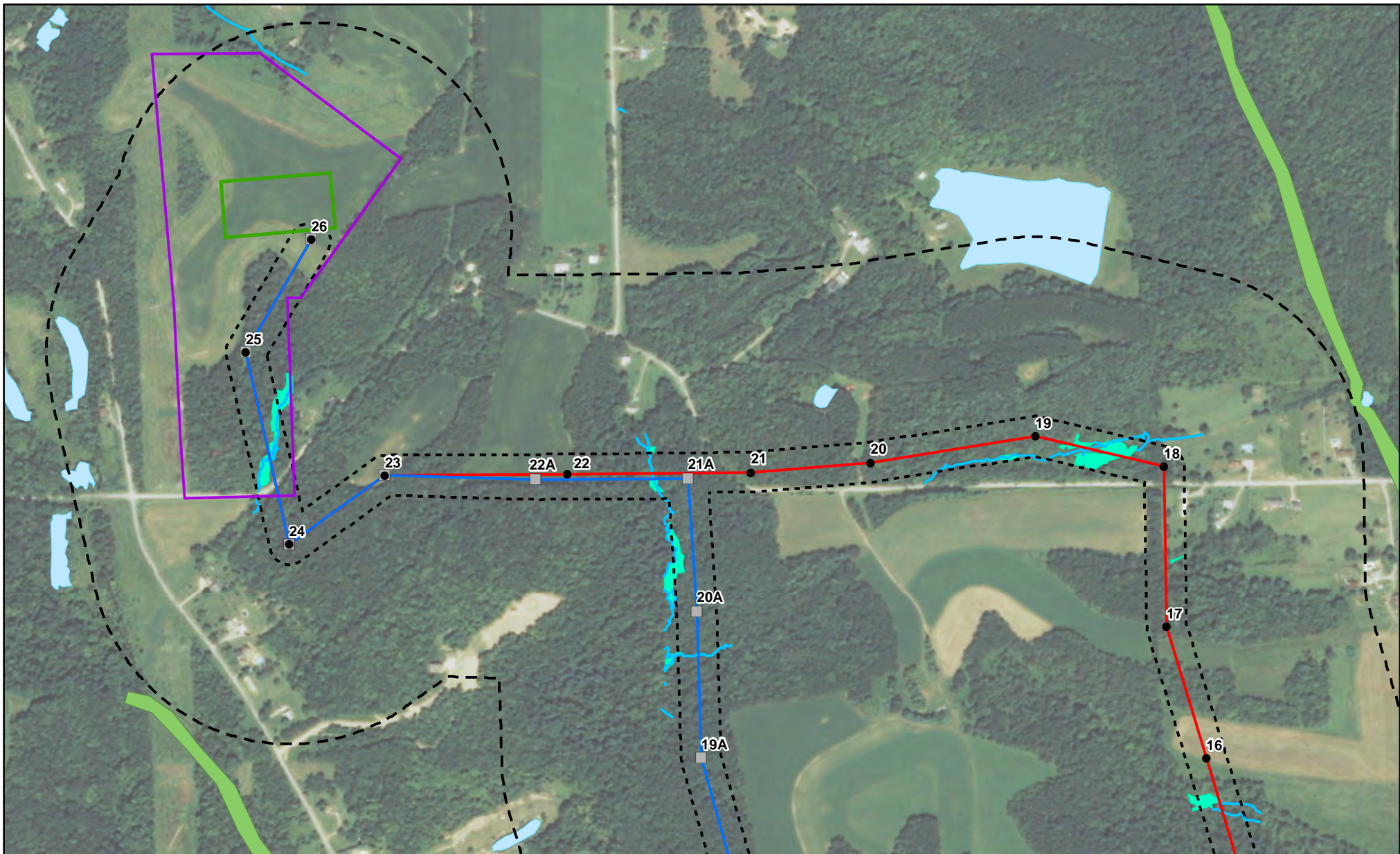


Figure 07-1c
Land Use, Cultural, Archaeological,
and Ecological Resources

South Field Energy
 Columbiana County, OH



Legend

- Preferred Transmission Pole
- Alternate Transmission Pole
- Preferred ROW Centerline
- Alternate ROW Centerline
- Switchyard Site
- SFE Switchyard
- - - 100 feet from Centerline
- 1,000-foot Study Area
- Field-delineated Streams
- Field-delineated Wetlands
- NWI Wetlands
 - Freshwater Emergent Wetland
 - Freshwater Forested/Shrub Wetland
 - Freshwater Pond

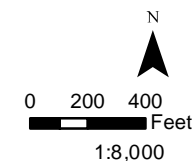
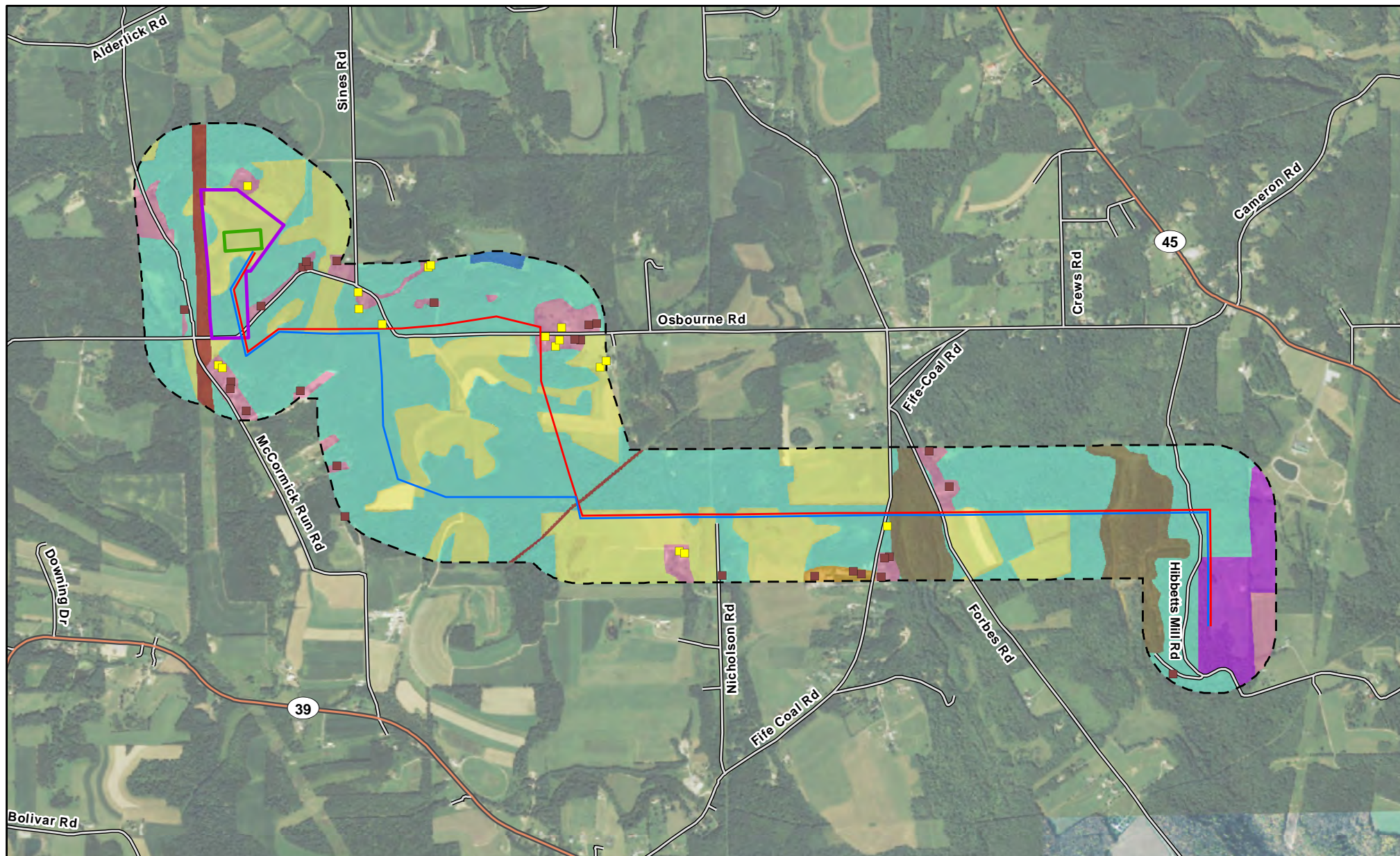


Figure 07-1d
Land Use, Cultural, Archaeological,
and Ecological Resources

South Field Energy
Columbiana County, OH



Legend

- Noise Sensitive Area (Residence)
- Participating Landowner
- Non-Participating Landowner
- Preferred ROW Centerline
- Alternate ROW Centerline
- [] 1,000-foot Study Area

- Switchyard Site
- SFE Switchyard
- Land Use
- Agricultural
- Commercial
- Former Strip Mine
- Forest

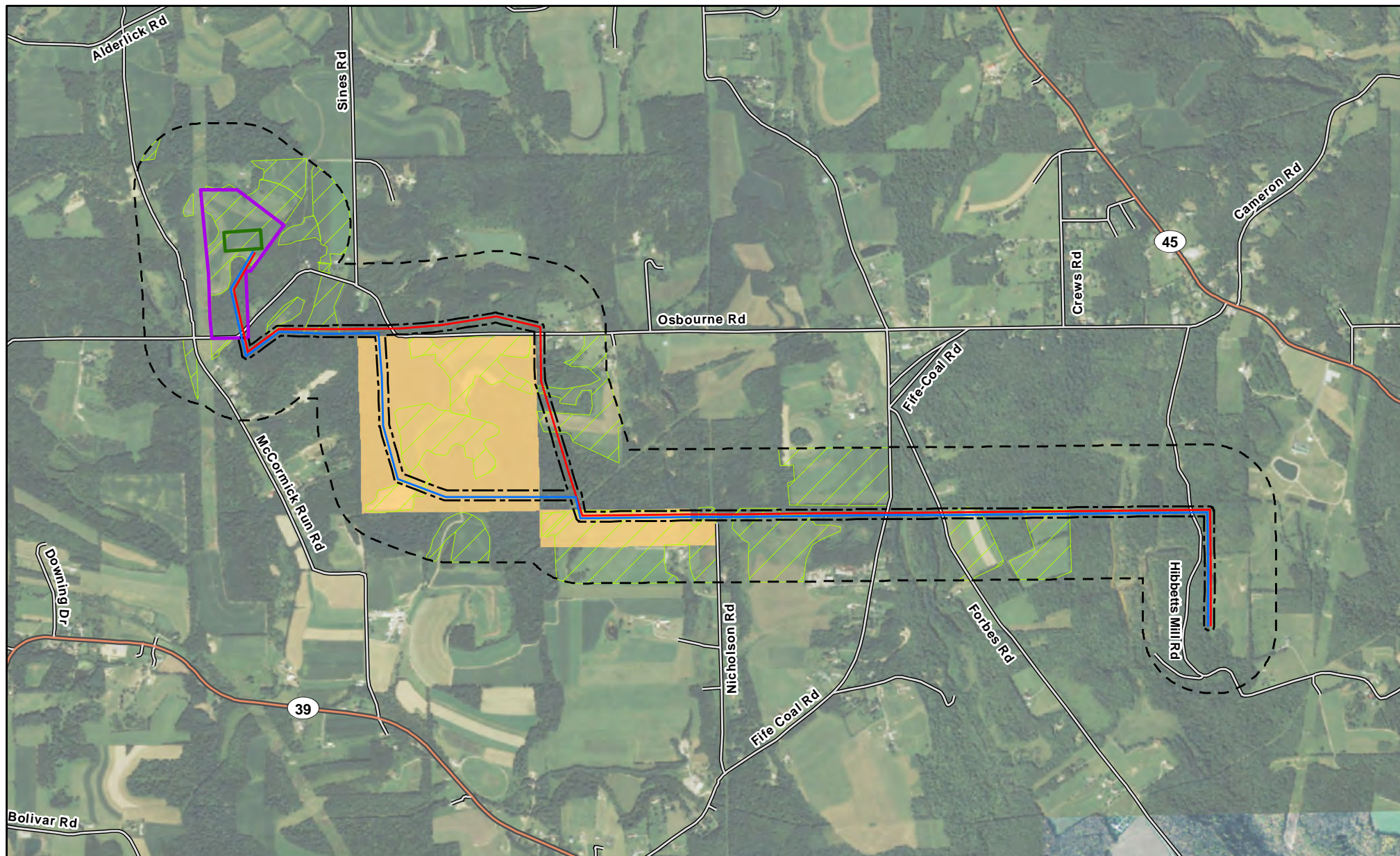
- Institutional
- Open Water
- Residential
- Utility

0 1,000 2,000 Feet



Figure 07-2
Land Use within the Study Area

South Field Energy
Columbiana County, OH



Legend

- Preferred ROW Centerline
- Alternate ROW Centerline
- 1,000-foot Study Area
- 75-foot Permanent ROW

- Switchyard Site
- SFE Switchyard
- Agricultural Lands
- Agricultural District

0 1,000 2,000
Feet



**Figure 07-3
Agricultural Land**

South Field Energy
Columbiana County, OH



Legend

- Generating Facility
- Switchyard Site
- 75-foot Permanent ROW
- Additional Work Areas



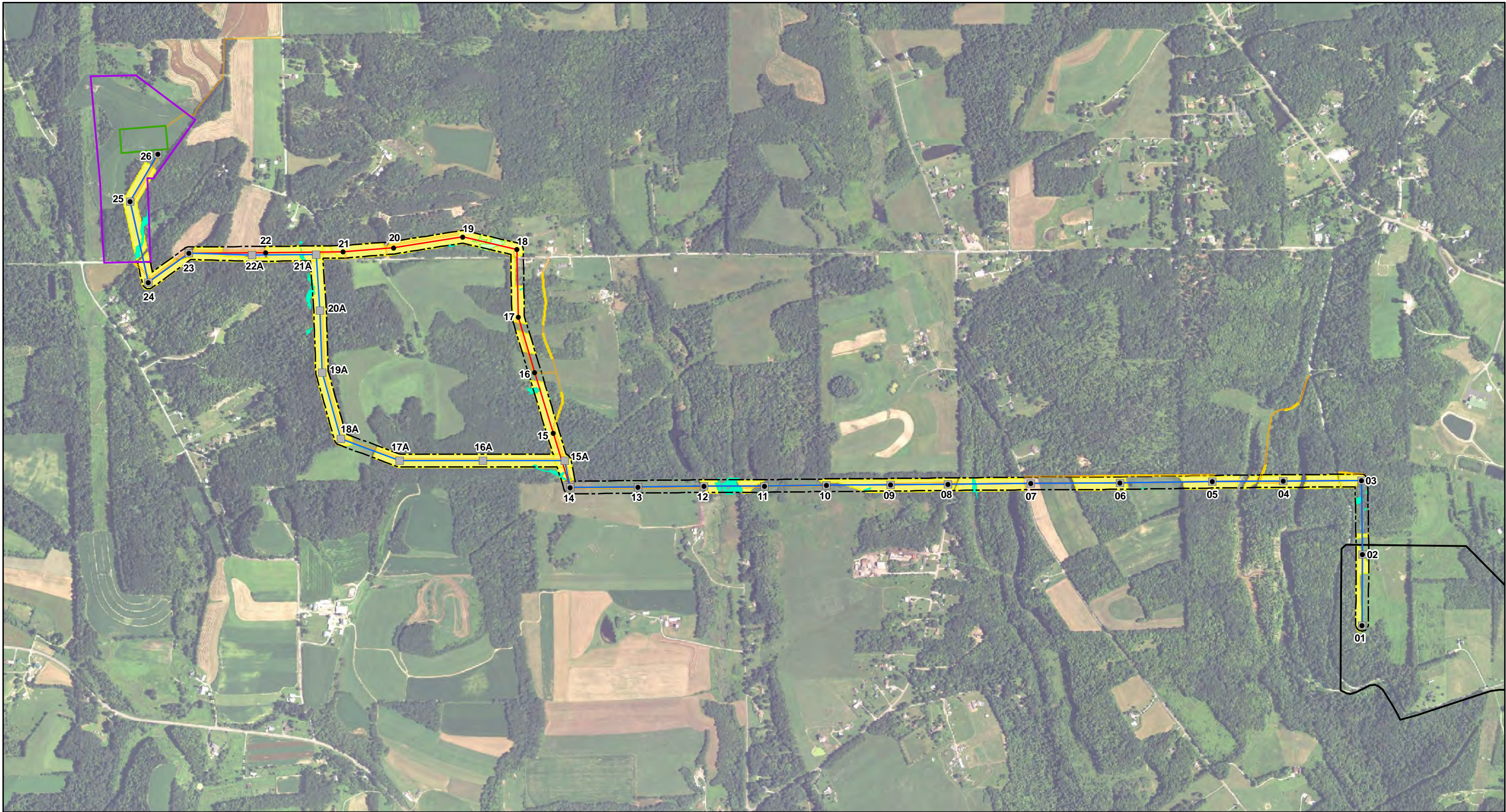
0 500 1,000
Feet

**Figure 07-4
Future Archaeology Survey Areas**

South Field Energy
Columbiana County, OH

Figures – Section 8

- Figure 08-1: Land Cover Types and Tree Clearing
- Figure 08-2: Highly Erodible and Sloping Soils
- Figure 08-3: Soil within the Study Area
- Figure 08-4: Air Transportation Facilities



Legend

- | | | |
|-------------------------------------|-----------------------|---------------------------|
| ● Preferred Route Transmission Pole | 75-foot Permanent ROW | Field-delineated Wetlands |
| ■ Alternate Route Transmission Pole | Generating Facility | PEM |
| — Preferred ROW Centerline | Switchyard Site | PFO |
| — Alternate ROW Centerline | SFE Switchyard | |
| — Access Roads | Tree Clearing | |

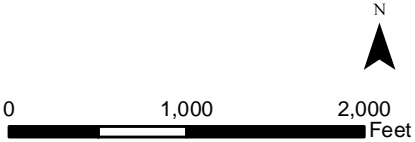
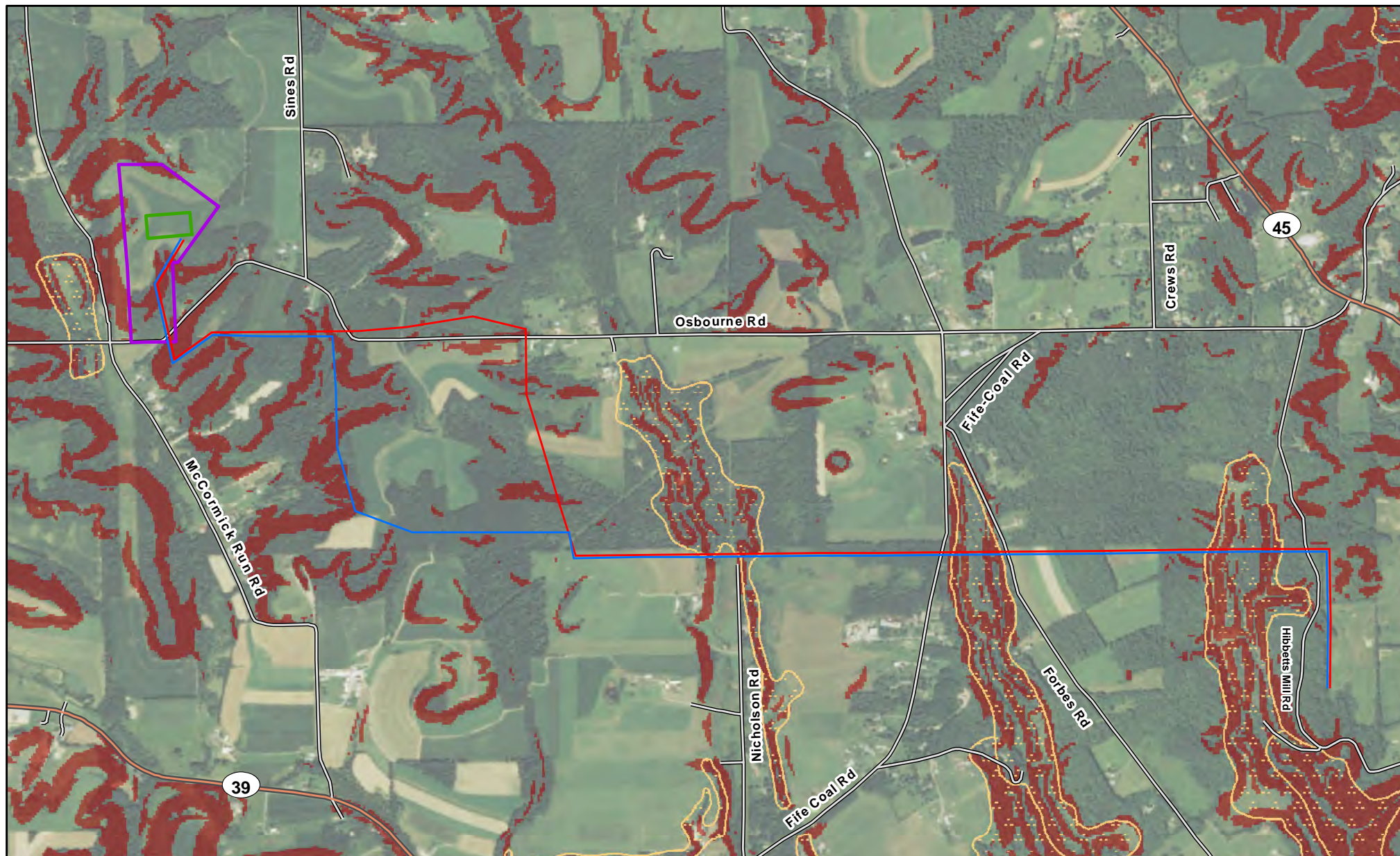


Figure 08-1
Land Cover Types and Tree Clearing

South Field Energy
Columbiana County, OH



Legend

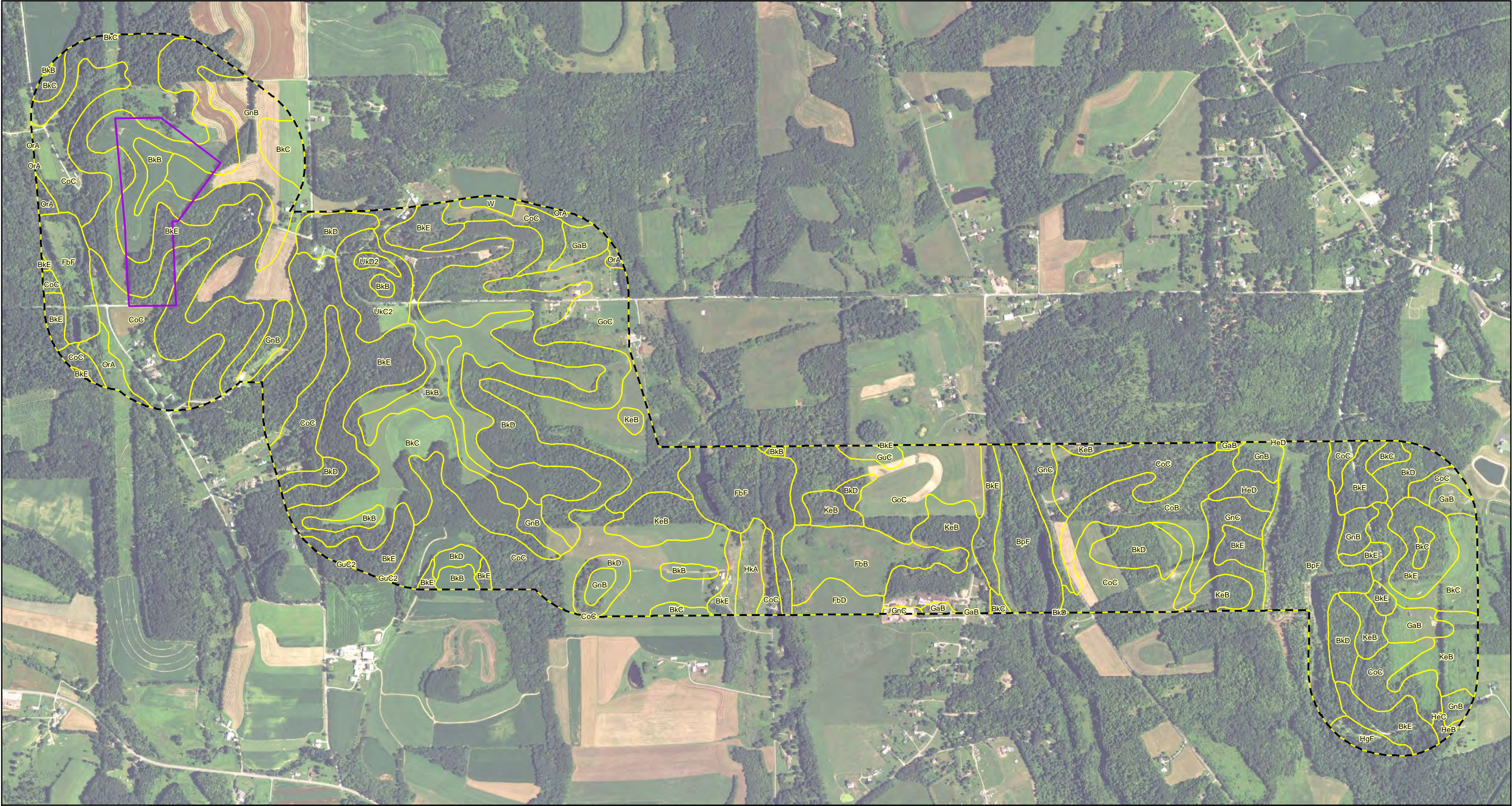
- Preferred ROW Centerline
- Alternate ROW Centerline
- Switchyard Site
- SFE Switchyard
- Slopes > 12%
- Highly Erodible Soils

0 1,000 2,000
Feet



Figure 08-2
Highly Erodible and Sloping Soils

South Field Energy
Columbiana County, OH



Legend

- 1,000-foot Study Area
- Switchyard Site
- Soil Unit Boundary

Soil Unit

- BkB: Berks channery silt loam, 3 to 8 percent slopes
- BkC: Berks channery silt loam, 8 to 15 percent slopes
- BkD: Berks channery silt loam, 15 to 25 percent slopes
- BkE: Berks channery silt loam, 25 to 35 percent slopes
- BpF: Bethesda very channery silt loam, 25 to 70 percent slopes
- CoB: Coshocton silt loam, 2 to 6 percent slopes
- CoC: Coshocton silt loam, 6 to 15 percent slopes
- FbB: Fairpoint very channery silt loam, 0 to 8 percent slopes
- FbD: Fairpoint very channery silt loam, 8 to 25 percent slopes

- FbF: Fairpoint very channery silt loam, 25 to 70 percent slopes
- GaB: Gavers silt loam, 2 to 6 percent slopes
- GnB: Gilpin silt loam, 3 to 8 percent slopes
- GnC: Gilpin silt loam, 8 to 15 percent slopes
- GoC: Gilpin-Coshocton silt loams, 6 to 15 percent slopes
- GuC: Guernsey silt loam, 6 to 15 percent slopes
- GuC2: Guernsey silt loam, 6 to 15 percent slopes, eroded
- HeB: Hazleton channery loam, 2 to 6 percent slopes
- HeC: Hazleton channery loam, 6 to 15 percent slopes
- HeD: Hazleton channery loam, 15 to 25 percent slopes

- HkA: Holly silt loam, 0 to 2 percent slopes, frequently flooded
- HgF: Hazleton-Westmoreland channery loams, 40 to 70 percent slopes
- OrA: Orrville silt loam, 0 to 2 percent slopes, occasionally flooded
- KeB: Keene silt loam, 3 to 8 percent slopes
- UkC2: Upshur-Berks complex, 6 to 15 percent slopes, eroded
- UkD2: Upshur-Berks complex, 15 to 25 percent slopes, eroded
- W: Water

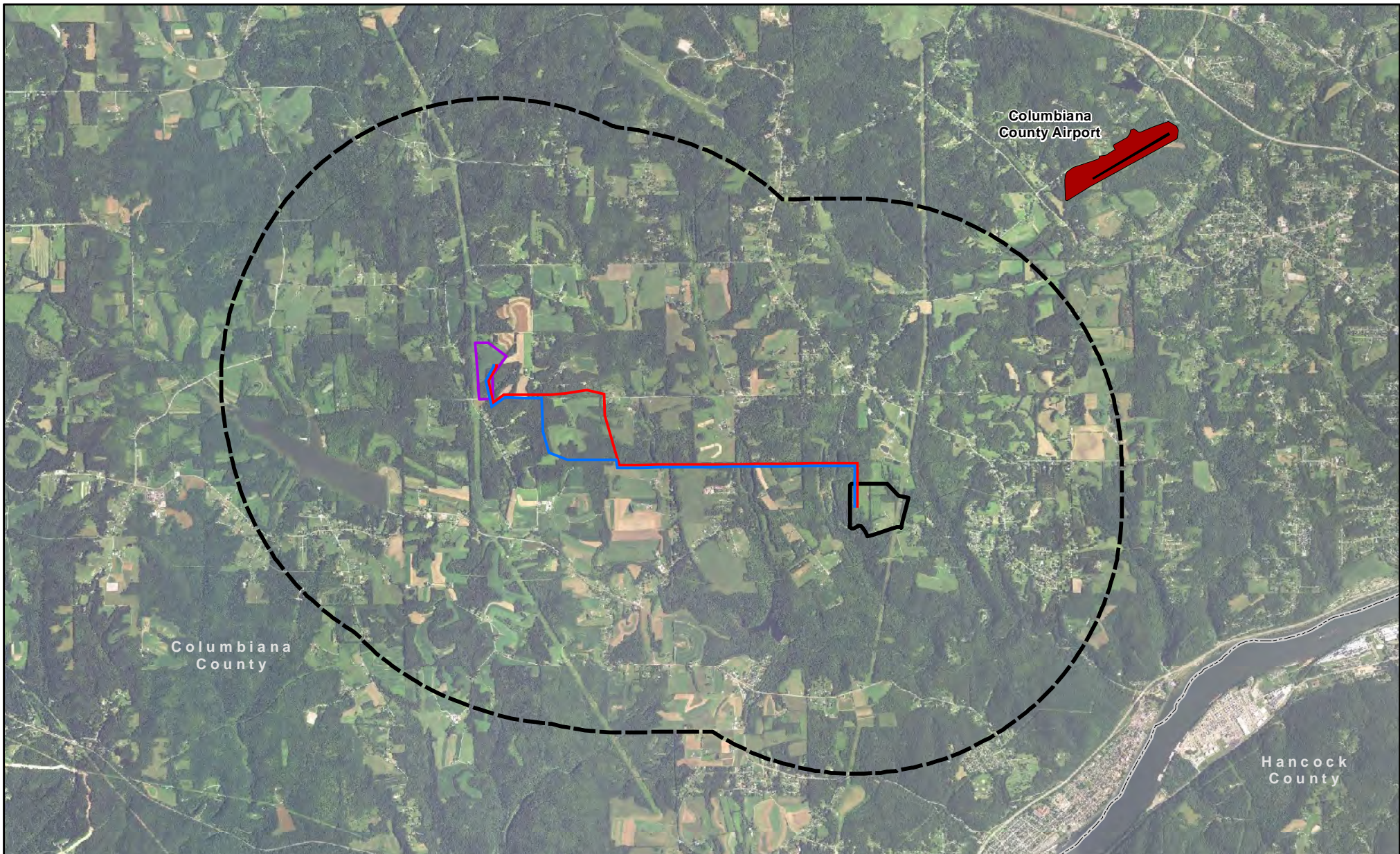
Note: No FEMA Flood Plains exist in the extent of this figure.

0 500 1,000 Feet



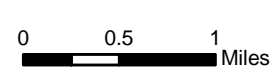
Figure 08-3
Soil within the Study Area

South Field Energy
Columbiana County, OH



Legend

- Preferred ROW Centerline
- Alternate ROW Centerline
- 2-mile ROW Buffer
- Generating Facility
- Switchyard Site
- Aviation Facility



**Figure 08-4
Air Transportation Facilities**

South Field Energy
Columbiana County, OH

This foregoing document was electronically filed with the Public Utilities

Commission of Ohio Docketing Information System on

1/15/2016 12:24:10 PM

in

Case No(s). 15-1717-EL-BTX

Summary: Application Figures electronically filed by Mr. Scott M Guttman on behalf of South Field Energy LLC