



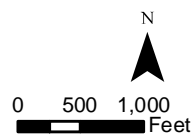


**Legend**

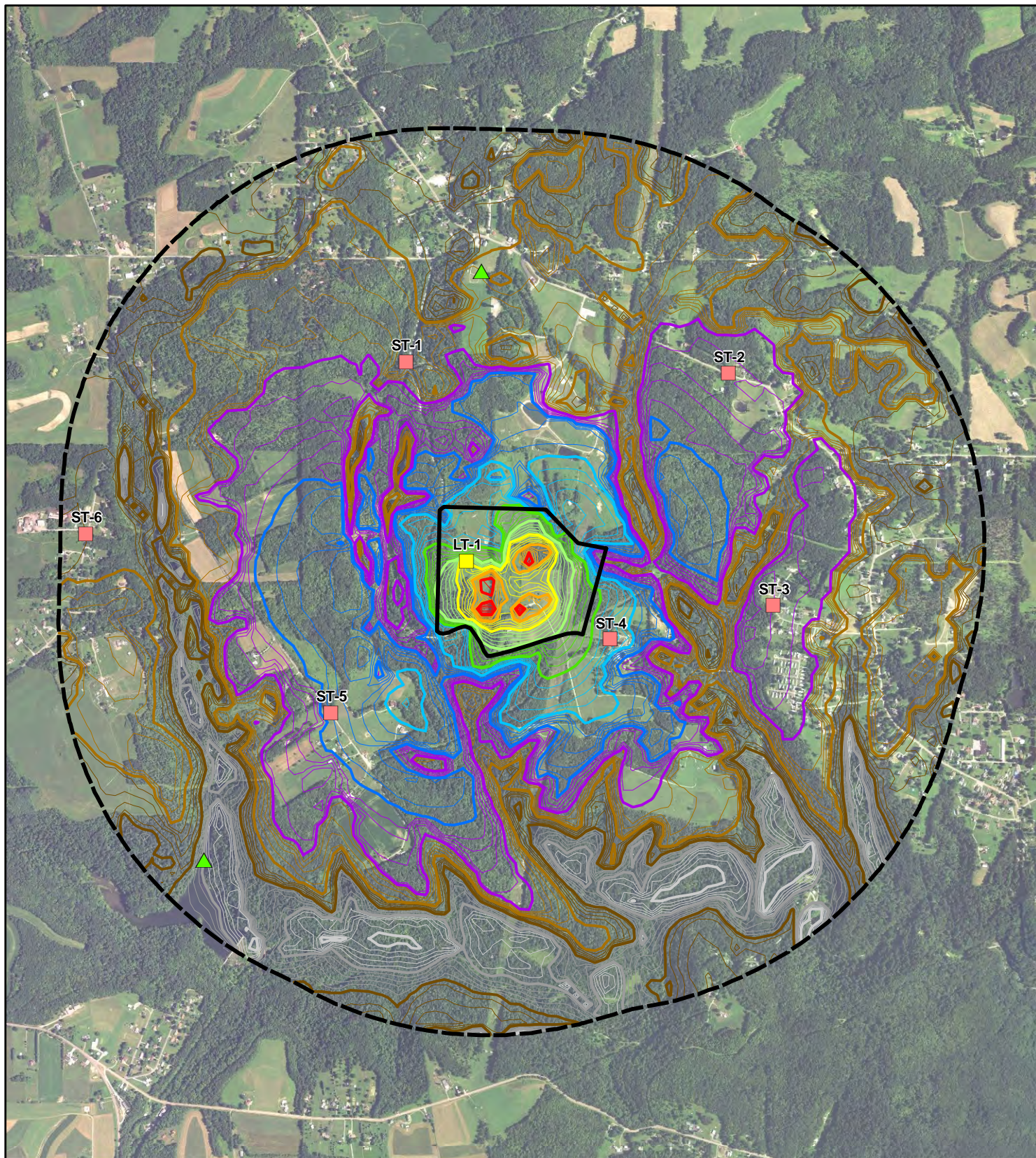
-  Facility Site
-  Construction Laydown Site
-  Long-term Sound Monitoring Location
-  Short-term Sound Monitoring Location








**Figure 07-1  
Sound Monitoring  
Locations**

South Field Energy  
Columbiana County, Ohio















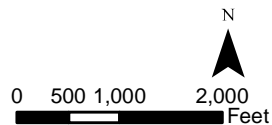


#### Legend

-  Facility Site
-  1-mile Radius
-  Short-term Monitoring Location
-  Long-term Monitoring Location
-  Culturally Significant Location

#### Sound Level Contours (dBA)

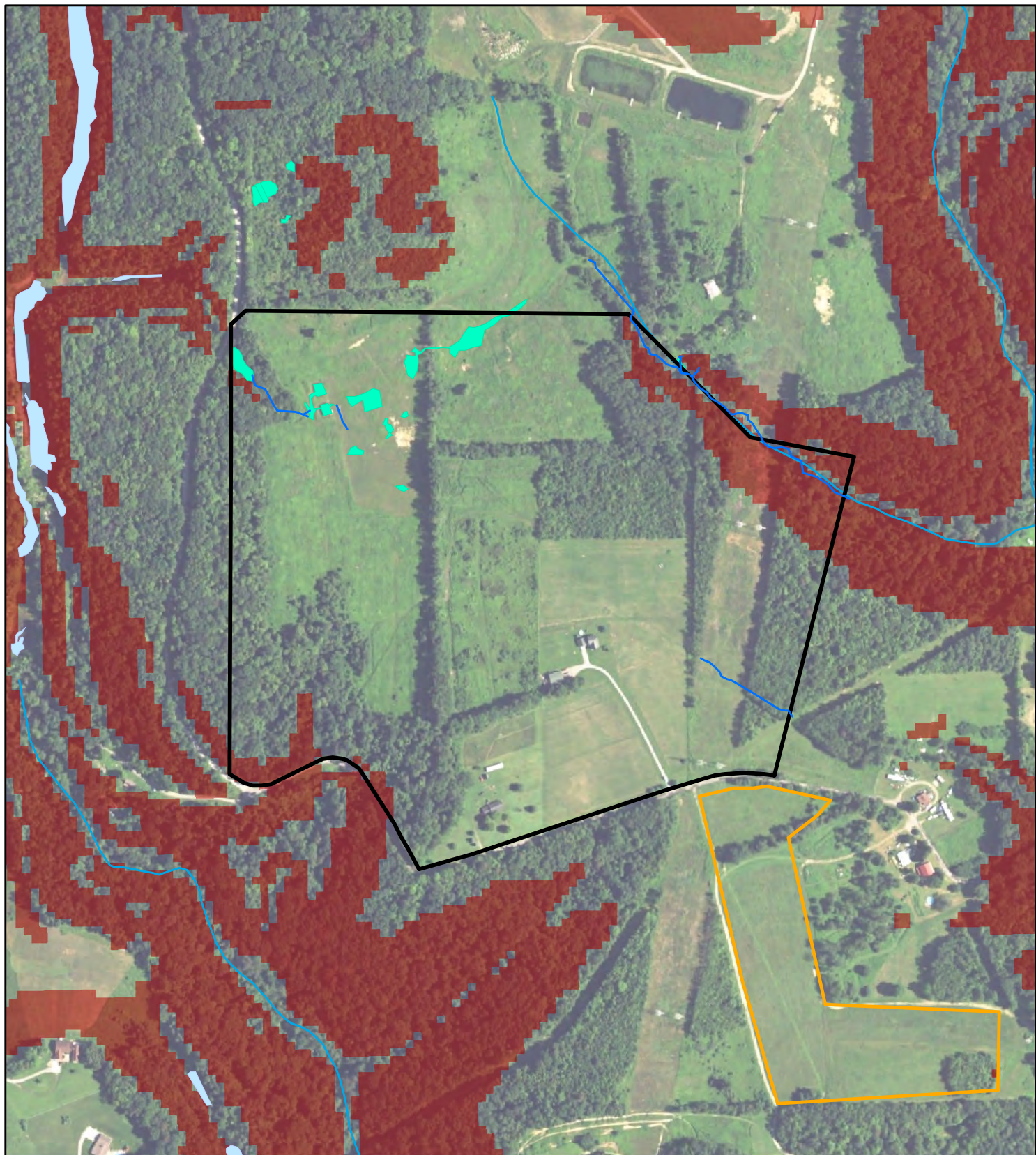
- |  |  |
|--|--|
|  15 |  50 |
|  20 |  55 |
|  25 |  60 |
|  30 |  65 |
|  35 |  70 |
|  40 |  |
|  45 |  |



**Figure 07-2**  
**Received Sound Levels:**  
**Normal Operation**

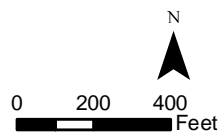
South Field Energy  
 Columbiana County, Ohio





#### Legend

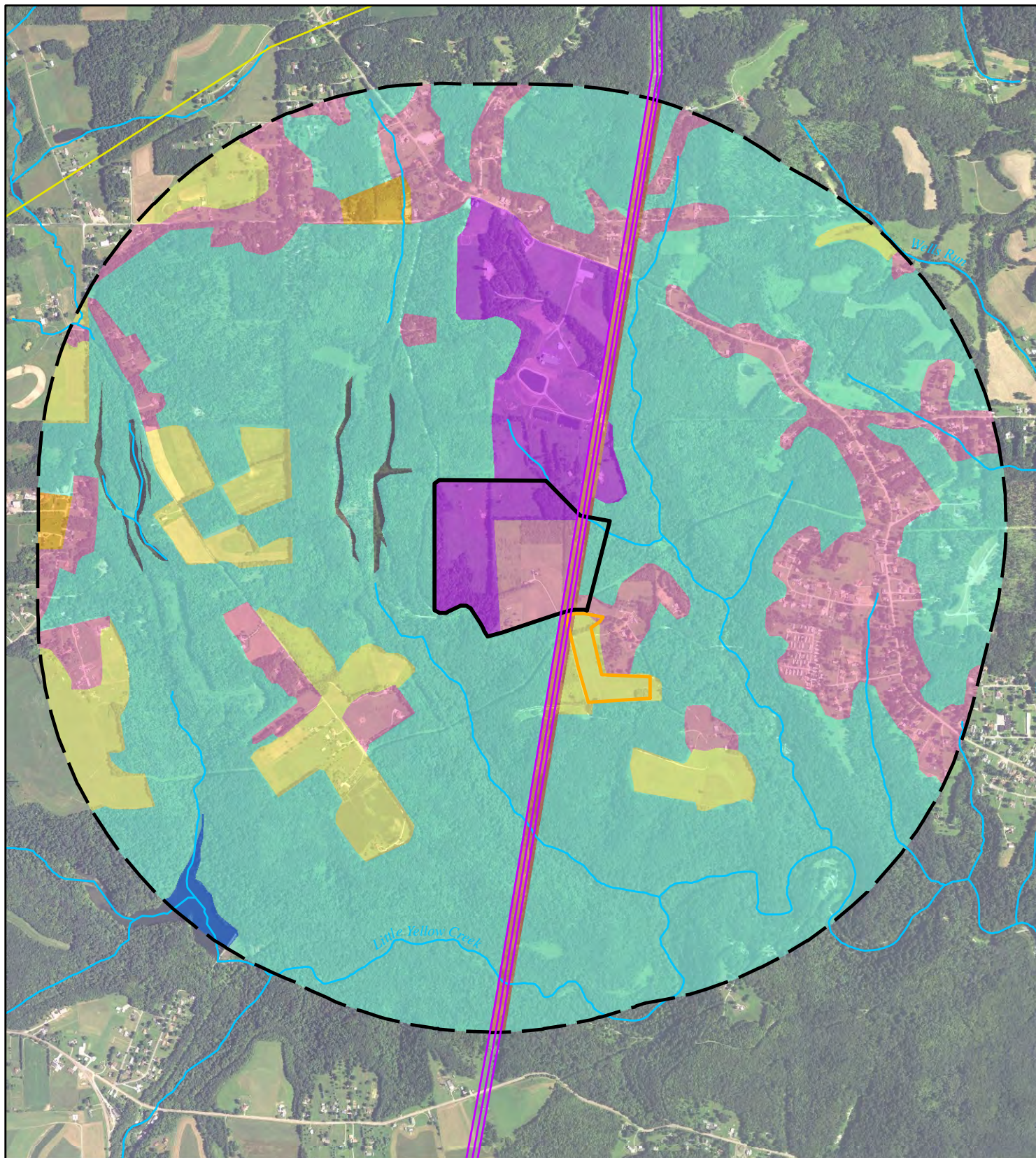
- |                           |                               |
|---------------------------|-------------------------------|
| Facility Site             | NWI Wetland Type              |
| Construction Laydown Site | Freshwater Pond               |
| Slopes >12%               | Field-delineated Wetland Type |
| NHD Streams               | Palustrine Emergent           |
| Field-delineated Stream   |                               |



**Figure 07-3**  
**Natural Resource**  
**Characteristics of the Site**  
**and Surroundings**

South Field Energy  
 Columbiana County, Ohio





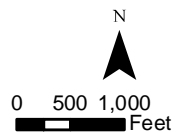
#### Legend

- Facility Site
- 1-mile Radius
- Construction Laydown Site
- Transmission Line
- Natural Gas Pipeline
- NHD Streams

#### Land Use

- Agricultural
- Commercial
- Forest/Shrub/Brush
- Former Strip Mine
- Institutional

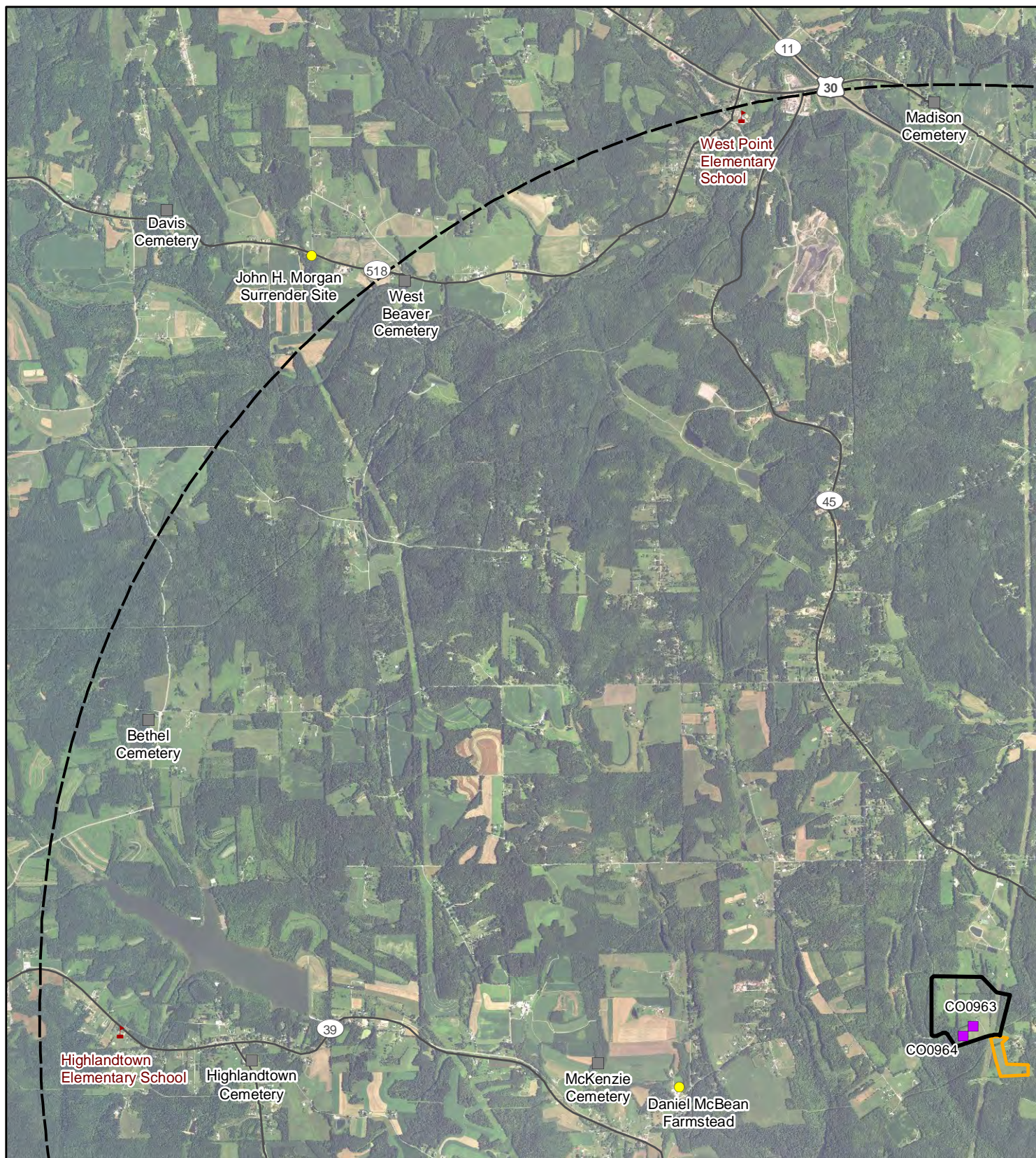
- Lake
- Residential
- Utility



**Figure 07-4**  
**Surrounding Land Use**

South Field Energy  
Columbiana County, Ohio

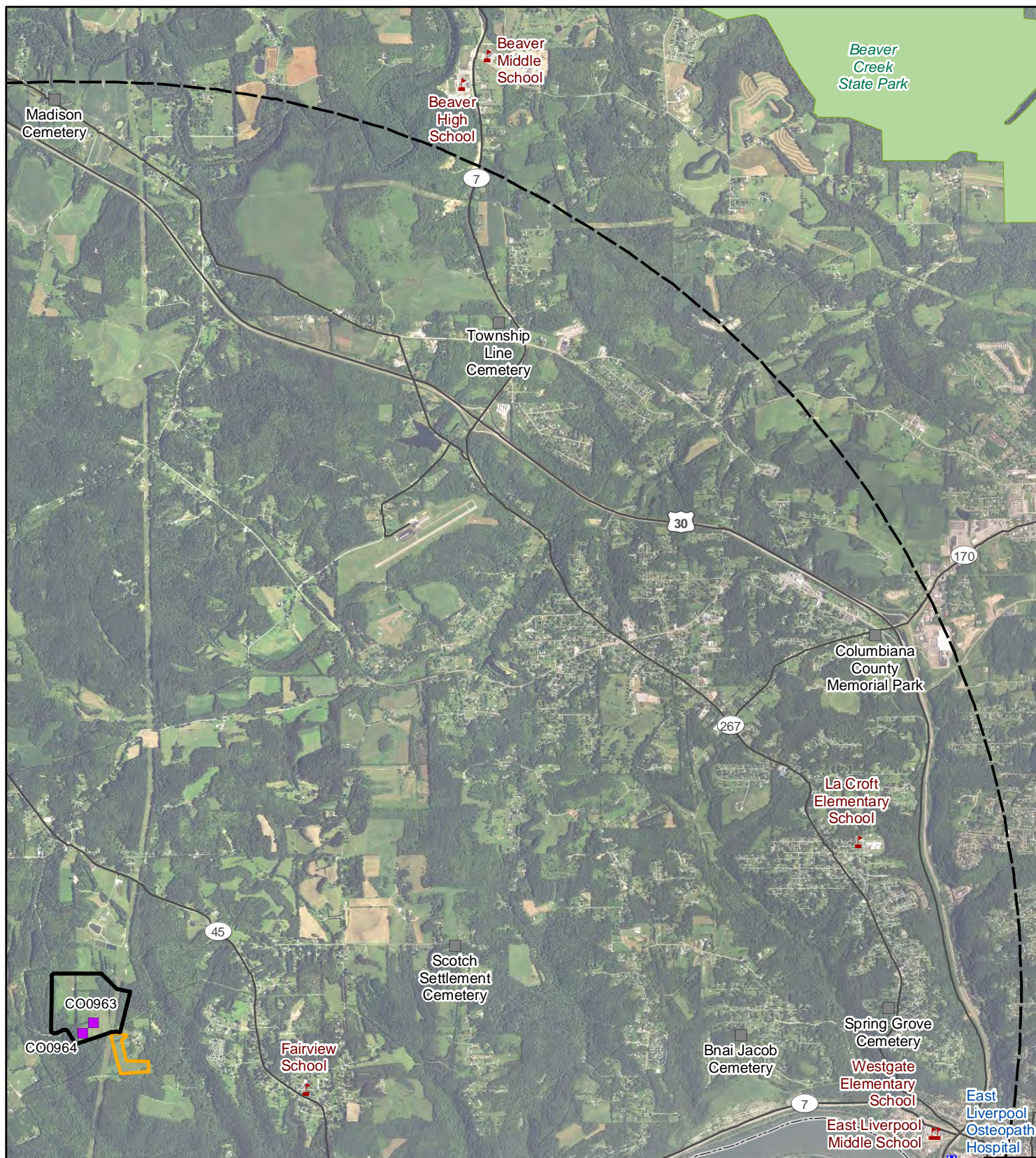




**Figure 07-5a**  
**Cultural and Recreational**  
**Areas within Five Miles**

South Field Energy  
 Columbiana County, Ohio

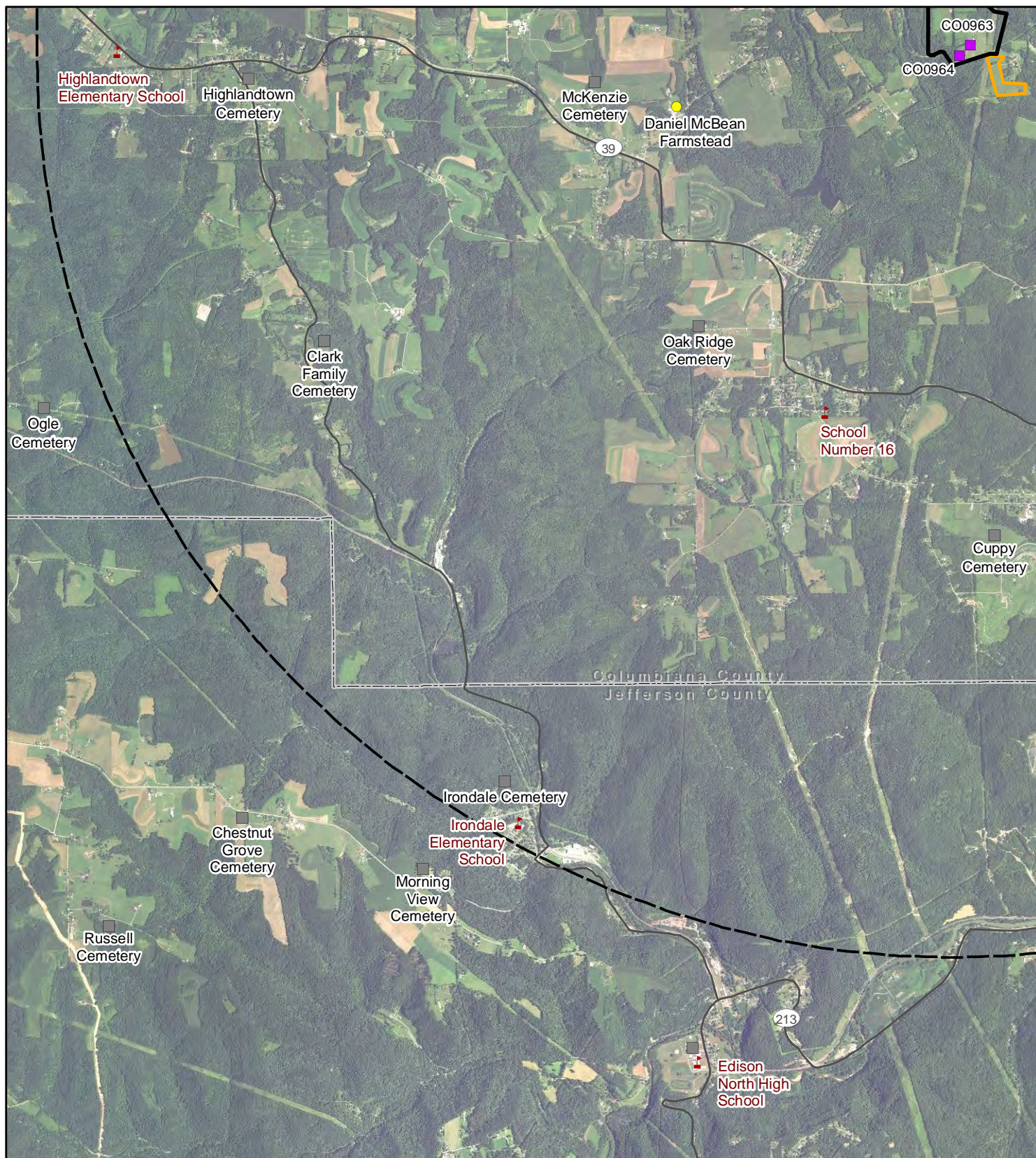




**Figure 07-5b**  
**Cultural and Recreational**  
**Areas within Five Miles**

South Field Energy  
 Columbiana County, Ohio





#### Legend

Facility Site

Construction Laydown Site

5-Mile Radius

County Boundary

State Park

Cemetery

Hospital

School

Archaeological Site

NRHP Point

NRHP Area

NRHP Historic District

N

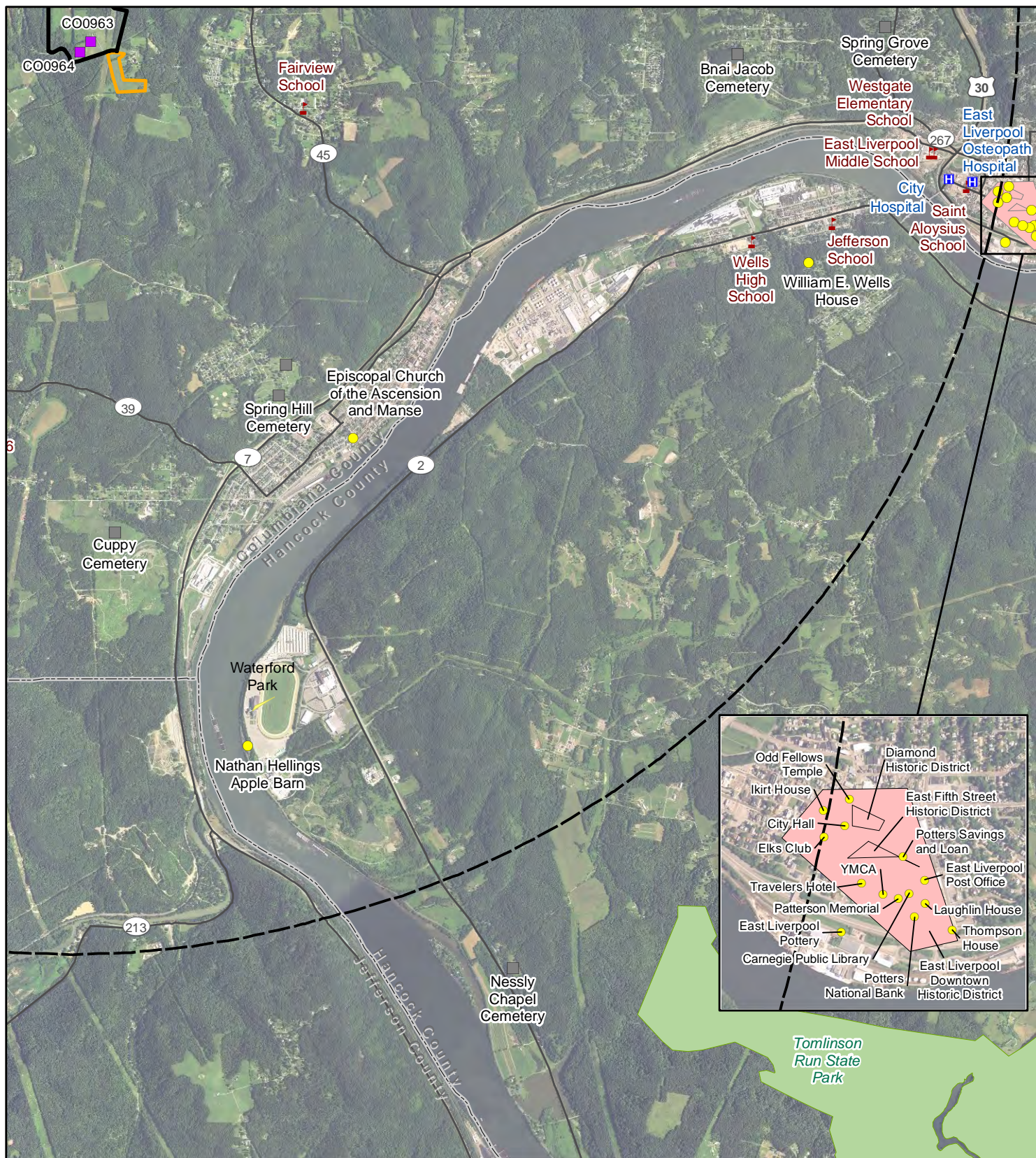


0 0.5 1 Miles

**Figure 07-5c**  
**Cultural and Recreational**  
**Areas within Five Miles**

South Field Energy  
Columbiana County, Ohio





#### Legend

Facility Site

Construction Laydown Site

5-Mile Radius

County Boundary

State Park

Cemetery

Hospital

School

Archaeological Site

NRHP Point

NRHP Area

NRHP Historic District

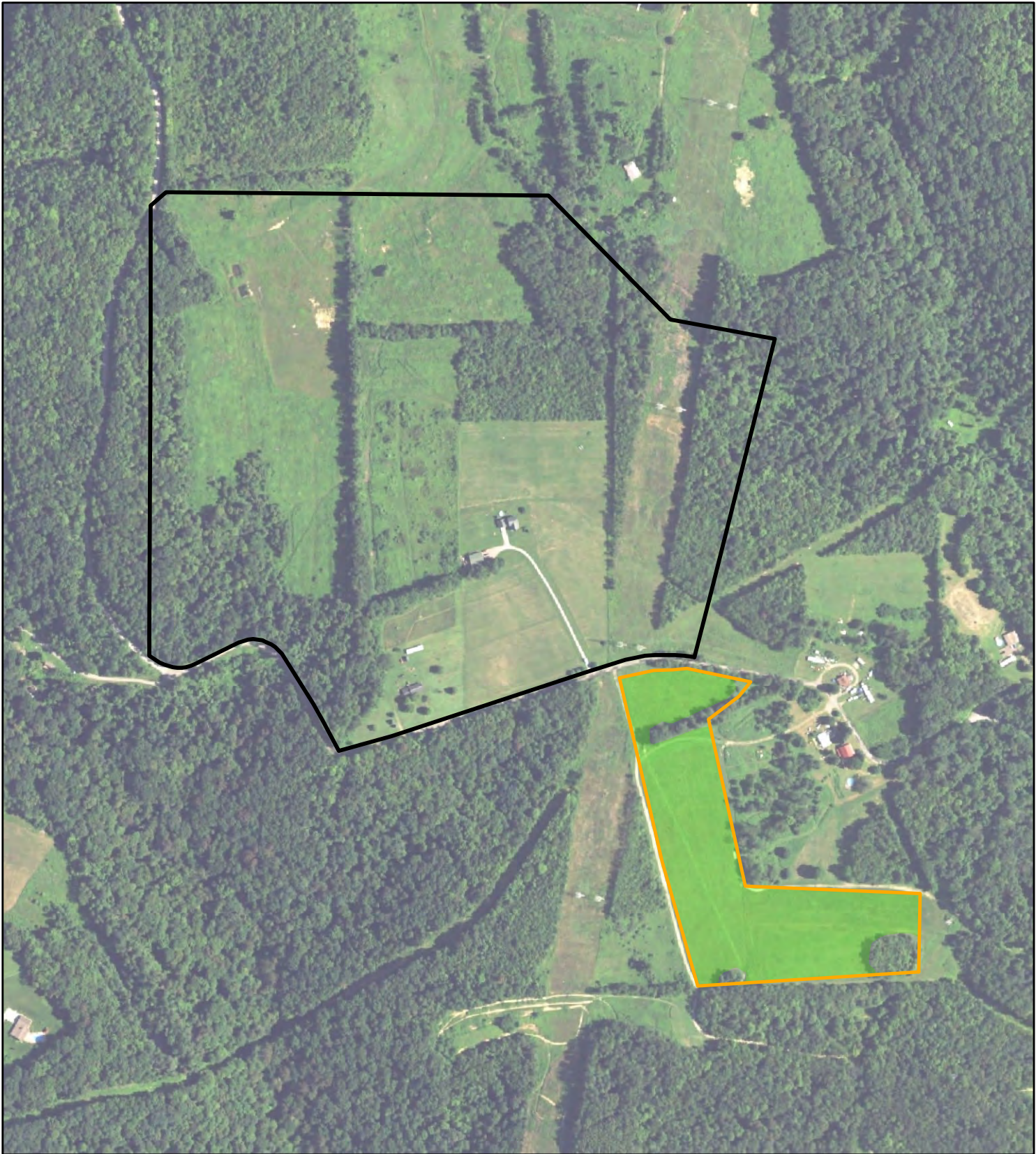
0 0.5 1 Miles



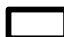

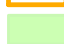
**Figure 07-5d  
Cultural and Recreational  
Areas within Five Miles**

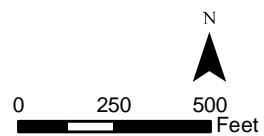
South Field Energy  
Columbiana County, Ohio





Legend

-  Facility Site
-  Construction Laydown Site
-  Agricultural Land



**Figure 07-6  
Agricultural Land**

South Field Energy  
Columbiana County, Ohio



**This foregoing document was electronically filed with the Public Utilities**

**Commission of Ohio Docketing Information System on**

**12/7/2015 4:23:23 PM**

**in**

**Case No(s). 15-1716-EL-BGN**

Summary: Application Figures for Section 7 electronically filed by Mr. Scott M Guttman on behalf of South Field Energy LLC