

**Legend**

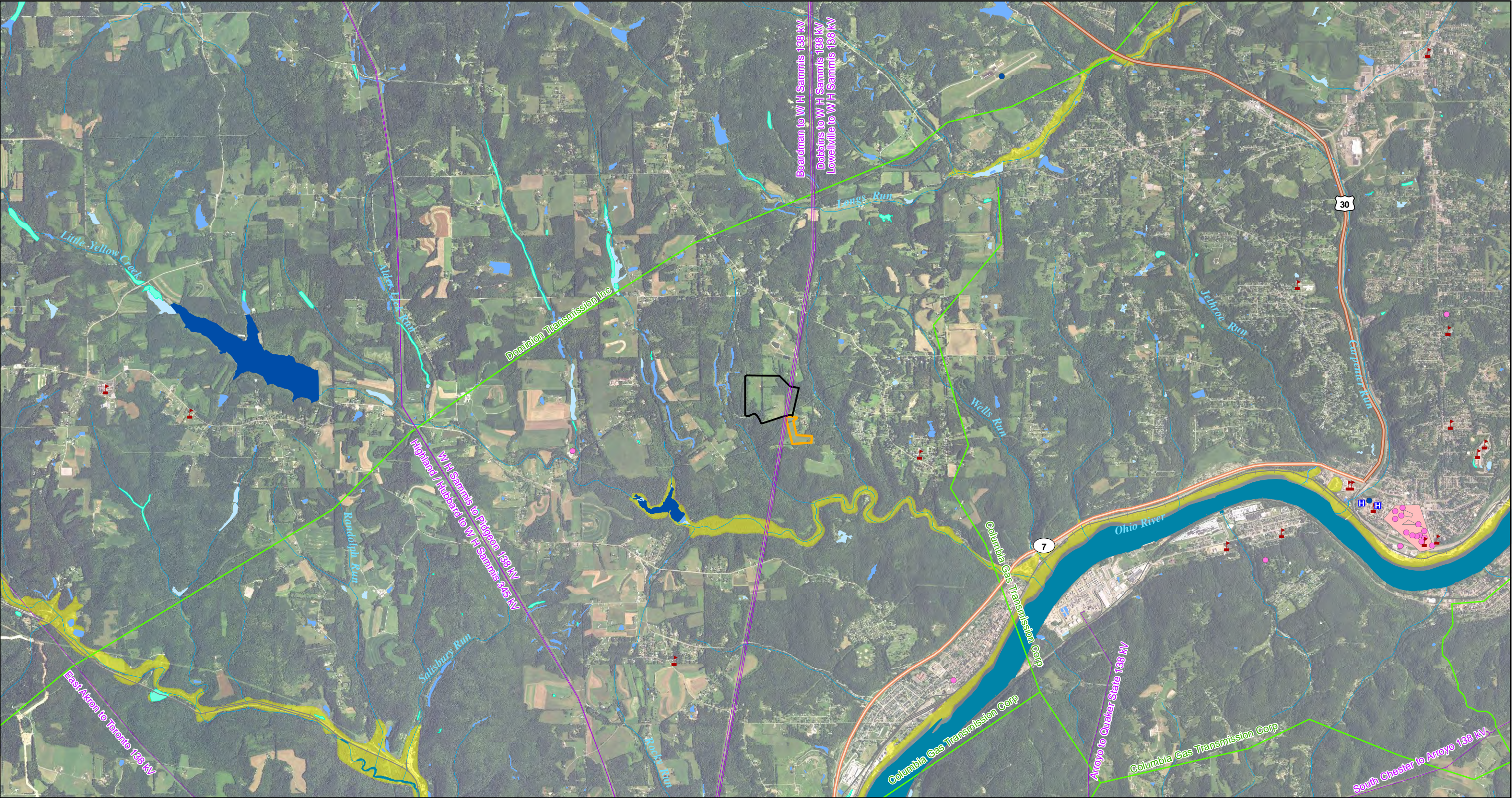
- |                             |                      |                     |
|-----------------------------|----------------------|---------------------|
| Facility Site               | Natural Gas Pipeline | 100-year Floodplain |
| Construction Laydown Site   | Interstate           | County Boundary     |
| Aviation Facility           | US Highway           | Township            |
| Recreation Area             | State/County Highway |                     |
| Stream/River                | Railroad             |                     |
| Existing Transmission Lines |                      |                     |

**Figure 03-1  
Columbiana County  
Site Selection Attributes**

South Field Energy  
Columbiana County, Ohio







**Legend**

Facility Site

Construction Laydown Site

Aviation Facility

Hospital

School

Stream/River

Existing Transmission Lines

Natural Gas Pipeline

Interstate

US Highway

State/County Highway

Railroad

NWI Wetland Type

Freshwater Emergent Wetland

Freshwater Forested/Shrub Wetland

Freshwater Pond

Lake

Other

Riverine

NRHP Point

NRHP Historic District

100-year Floodplain

**Figure 03-2**  
**Site Selection Constraints**  
**within 3 Miles of Facility Area**

South Field Energy  
Columbiana County, Ohio

R:\PROJECTS\SOUTH\_FIELD\_5200\OPSB\MAPS\Figure\_03-2\_Site\_3mi.mxd



**This foregoing document was electronically filed with the Public Utilities**

**Commission of Ohio Docketing Information System on**

**12/7/2015 4:16:35 PM**

**in**

**Case No(s). 15-1716-EL-BGN**

Summary: Application Figures for Section 3 electronically filed by Mr. Scott M Guttman on behalf of South Field Energy LLC