



COLUMBUS | CLEVELAND
CINCINNATI-DAYTON
MARIETTA

BRICKER & ECKLER LLP
100 South Third Street
Columbus, OH 43215-4291
MAIN: 614.227.2300
FAX: 614.227.2390

www.bricker.com
info@bricker.com

Sally W. Bloomfield
614.227.2368
sbloomfield@bricker.com

September 16, 2015

Via Electronic Filing

Ms. Barcy McNeal
Administration/Docketing
Public Utilities Commission of Ohio
180 East Broad Street, 11th Floor
Columbus, OH 43215-3793

**Re: Oregon Clean Energy, LLC
Case No. 12-2959-EL-BGN**

Dear Ms. McNeal:

The May 1, 2013 Opinion, Order, and Certificate approving Oregon Clean Energy, LLC's ("Oregon") Certificate of Environmental Compatibility and Public Need to Construct an Electric Generation Facility ("Certificate") and the March 15, 2013 Second Supplement to Application established a set of conditions and supplemental commitments as part of the Certificate.

Specifically, in part, **Commitment No. 20**, which included in the Second Supplement filed on March 15, 2013, requires that:

Prior to the commencement of construction activities that require permits or authorizations by federal or state laws and regulations, the Applicant will obtain and comply with such permits or authorizations. The Applicant will provide copies of permits and authorizations, including all supporting documentation, to Staff within seven days of issuance or receipt by the Applicant. The Applicant will provide a schedule of construction activities and acquisition of corresponding permits for each activity at the preconstruction conference.

In compliance with Commitment No. 20, attached is a copy of the revised Federal Aviation Administration temporary crane approvals, which drop the requirement for lowering the crane every night (Attachment 1); and the first two heavy haul permits from the City of Toledo (Attachment 2).

If you have any questions please call at the number listed above.

Sincerely,

Sally W. Bloomfield

Attachments

Cc: Grant Zeto (w/Attachments)
Chris Cunningham (w/Attachments)



Mail Processing Center
Federal Aviation Administration
Southwest Regional Office
Obstruction Evaluation Group
10101 Hillwood Parkway
Fort Worth, TX 76177

ATTACHMENT 1
Aeronautical Study No.
2015-AGL-13105-OE
Prior Study No.
2015-AGL-6337-OE

Issued Date: 09/15/2015

Black & Veatch Corp. - Jason Schottler
11401 Lamar Avenue
Overland Park, KS 66211

****DETERMINATION OF NO HAZARD TO AIR NAVIGATION FOR TEMPORARY STRUCTURE****

The Federal Aviation Administration has conducted an aeronautical study under the provisions of 49 U.S.C., Section 44718 and if applicable Title 14 of the Code of Federal Regulations, part 77, concerning:

Structure:	Crane North
Location:	Oregon, OH
Latitude:	41-40-04.54N NAD 83
Longitude:	83-26-37.19W
Heights:	590 feet site elevation (SE) 300 feet above ground level (AGL) 890 feet above mean sea level (AMSL)

This aeronautical study revealed that the temporary structure does not exceed obstruction standards and would not be a hazard to air navigation provided the following condition(s), if any, is (are) met:
As a condition to this Determination, the structure is marked/lighted in accordance with FAA Advisory circular 70/7460-1 K Change 2, Obstruction Marking and Lighting, flags/red lights - Chapters 3(Marked),4,5(Red),&12.

This determination expires on 03/14/2017 unless extended, revised, or terminated by the issuing office.

NOTE: REQUEST FOR EXTENSION OF THE EFFECTIVE PERIOD OF THIS DETERMINATION MUST BE E-FILED AT LEAST 15 DAYS PRIOR TO THE EXPIRATION DATE. AFTER RE-EVALUATION OF CURRENT OPERATIONS IN THE AREA OF THE STRUCTURE TO DETERMINE THAT NO SIGNIFICANT AERONAUTICAL CHANGES HAVE OCCURRED, YOUR DETERMINATION MAY BE ELIGIBLE FOR ONE EXTENSION OF THE EFFECTIVE PERIOD.

This determination is based, in part, on the foregoing description which includes specific coordinates and heights. Any changes in coordinates and/or heights will void this determination. Any future construction or alteration, including increase to heights, requires separate notice to the FAA.

This determination does include temporary construction equipment such as cranes, derricks, etc., which may be used during actual construction of a structure. However, this equipment shall not exceed the overall heights as indicated above. Equipment which has a height greater than the studied structure requires separate notice to the FAA.

This determination concerns the effect of this temporary structure on the safe and efficient use of navigable airspace by aircraft and does not relieve the sponsor of compliance responsibilities relating to any law, ordinance, or regulation of any Federal, State, or local government body.

Any failure or malfunction that lasts more than thirty (30) minutes and affects a top light or flashing obstruction light, regardless of its position, should be reported immediately to (877) 487-6867 so a Notice to Airmen (NOTAM) can be issued. As soon as the normal operation is restored, notify the same number.

A copy of this determination will be forwarded to the Federal Aviation Administration Flight Procedures Office if the structure is subject to the issuance of a Notice To Airman (NOTAM).

If you have any questions, please contact our office at (847) 294-7575. On any future correspondence concerning this matter, please refer to Aeronautical Study Number 2015-AGL-13105-OE

Signature Control No: 263963734-265641924

(TMP)

Vivian Vilaro
Specialist



Mail Processing Center
Federal Aviation Administration
Southwest Regional Office
Obstruction Evaluation Group
10101 Hillwood Parkway
Fort Worth, TX 76177

Aeronautical Study No.
2015-AGL-13104-OE

Issued Date: 09/15/2015

Black & Veatch Corp. - Jason Schottler
11401 Lamar Avenue
Overland Park, KS 66211

****DETERMINATION OF NO HAZARD TO AIR NAVIGATION FOR TEMPORARY STRUCTURE****

The Federal Aviation Administration has conducted an aeronautical study under the provisions of 49 U.S.C., Section 44718 and if applicable Title 14 of the Code of Federal Regulations, part 77, concerning:

Structure:	Crane Temporary
Location:	Oregon, OH
Latitude:	41-40-03.44N NAD 83
Longitude:	83-26-34.05W
Heights:	590 feet site elevation (SE) 300 feet above ground level (AGL) 890 feet above mean sea level (AMSL)

This aeronautical study revealed that the temporary structure does not exceed obstruction standards and would not be a hazard to air navigation provided the following condition(s), if any, is (are) met:
As a condition to this Determination, the structure is marked/lighted in accordance with FAA Advisory circular 70/7460-1 K Change 2, Obstruction Marking and Lighting, flags/red lights - Chapters 3(Marked),4,5(Red),&12.

This determination expires on 03/14/2017 unless extended, revised, or terminated by the issuing office.

NOTE: REQUEST FOR EXTENSION OF THE EFFECTIVE PERIOD OF THIS DETERMINATION MUST BE E-FILED AT LEAST 15 DAYS PRIOR TO THE EXPIRATION DATE. AFTER RE-EVALUATION OF CURRENT OPERATIONS IN THE AREA OF THE STRUCTURE TO DETERMINE THAT NO SIGNIFICANT AERONAUTICAL CHANGES HAVE OCCURRED, YOUR DETERMINATION MAY BE ELIGIBLE FOR ONE EXTENSION OF THE EFFECTIVE PERIOD.

This determination is based, in part, on the foregoing description which includes specific coordinates and heights. Any changes in coordinates and/or heights will void this determination. Any future construction or alteration, including increase to heights, requires separate notice to the FAA.

This determination does include temporary construction equipment such as cranes, derricks, etc., which may be used during actual construction of a structure. However, this equipment shall not exceed the overall heights as indicated above. Equipment which has a height greater than the studied structure requires separate notice to the FAA.

This determination concerns the effect of this temporary structure on the safe and efficient use of navigable airspace by aircraft and does not relieve the sponsor of compliance responsibilities relating to any law, ordinance, or regulation of any Federal, State, or local government body.

Any failure or malfunction that lasts more than thirty (30) minutes and affects a top light or flashing obstruction light, regardless of its position, should be reported immediately to (877) 487-6867 so a Notice to Airmen (NOTAM) can be issued. As soon as the normal operation is restored, notify the same number.

A copy of this determination will be forwarded to the Federal Aviation Administration Flight Procedures Office if the structure is subject to the issuance of a Notice To Airman (NOTAM).

If you have any questions, please contact our office at (847) 294-7575. On any future correspondence concerning this matter, please refer to Aeronautical Study Number 2015-AGL-13104-OE

Signature Control No: 263963122-265641923

(TMP)

Vivian Vilaro
Specialist



APPLICATIONS FOR SPECIAL HAULING

Please Type or Print Legibly. Illegible applications will be rejected

PERMIT NO. _____

City of Toledo, Ohio
Department of Inspection

Mail or Deliver To:
One Stop Shop
One Government Center
Suite 1600
Toledo, Ohio 43604
Telephone: (419) 245-1210

Name of Applicant: JARED Bush				Date: _____	
Name of Company: Burkhalter Rigging, Inc.				Type of Permit: <input type="checkbox"/> Trip <input checked="" type="checkbox"/> Trip & Return <input type="checkbox"/> Quarterly <input type="checkbox"/> Annual <input type="checkbox"/> Other (specify): _____	
Address: 2193 Hwy 45 S Columbus, MS 39701					
City: _____		State: _____		Zip/Postal Code: _____	
Telephone: 662 889 0002 Ext. _____		Fax: 662 327 4401			
Nature of Move: Heavy Haul to Oregon Clean Energy					
MAKE & MODEL	LICENSE NO.	STATE	WEIGHT IN POUNDS: WEIGHT EMPTY		
Truck or Tractor:	N/A				
Semitrailer:	N/A				
Other Trailer:					
PST Goldhofer 07GSP3 MS			139,552		
Description of Load Including Make & Model: GAS Turbine			Net Load: 640,000		
If Applicable:			Total Gross Wt: 794,960		
CHECK IF APPLICABLE: <input type="checkbox"/> Load is towed on its own frame and undercarriage. <input checked="" type="checkbox"/> Load is under its own power. <input type="checkbox"/> Variable trailers, see attached list.			<input type="checkbox"/> All weights (axle & gross) are LEGAL in accordance with Section 5577.04 Ohio Revised Code. If checked, do not complete axle loads & spacing section of this application.		
Axle Spacing: Feet & inches:	Axle No.	AXLE LOADS: Gross axle loads, Lbs		TIRES: No. On Axle Sizes	
A 4-11	1.	49,685		8 8.5	
	2.	49,685		8 8.5	
B 4-11	3.	49,685		8 8.5	
	4.	49,685		8 8.5	
C 4-11	5.	49,685		8 8.5	
	6.	49,685		8 8.5	
D 4-11	7.	49,685		8 8.5	
	8.	49,685		8 8.5	
E 4-11	9.	49,685		8 8.5	
	10.	49,685		8 8.5	
F 4-11	11.	49,685		8 8.5	
	12.	49,685		8 8.5	
Total Gross Weight: 794,960		Estimated Number of Trips: 1			

Fee \$: _____ Paid By: _____
☐ Cash ☐ Check ☐ Money Order ☒ Credit Card

Make checks payable to: City of Toledo
THIS PERMIT IS VALID

BEGINNING ~~9/10~~ **9/17/15**
ENDING ~~9/17~~ **9/24/15**

All Dimensions Feet & Inches
DIMENSIONS

Vehicle & Load Overall		
Length	Height	Width
90-4	18-10	116-0
Load Only Height:		
29-0	14-10	116-0

MOVEMENT TO BE MADE

From: **Port of Toledo**

To: **Oregon Clean Energy Center**
Designated Route:
1. Exit port of Toledo onto Front St (SB)
2. Left turn (EB) onto Millard Ave
3. Right turn (SB) onto Old Millard Ave (EB)
4. Left turn (WB) onto Otter Creek Rd
5. Right turn (EB) onto Cedar Point Rd
6. Right turn (SB) on Lallendorf Rd
7. Left turn (EB) onto site

PERMIT OFFICE USE ONLY
VOID IF BLANK, ALTERED, OR UNSIGNED

APPROVED: _____
Department of Inspection

Limitations listed on back of this application form apply. Special provisions as checked on back of this form apply. Move only during daylight hours. Movement is prohibited on Saturdays, Sundays, and holidays. Permittee is responsible for providing all above listed information and measurements. Permittee is responsible to check route for abnormal or changed or unknown conditions which may exist during move.

JARED Bush do hereby swear that I am the applicant or his/her legally authorized representative and the statements made in the foregoing application are true and correct to the best of my knowledge. SPECIAL ATTENTION HAS BEEN GIVEN TO ENSURE THE ACCURACY OF THE MEASUREMENTS OF THE ABOVE LISTED AXLE SPACING AND SPECIFIC VEHICLE UNDERSTAND THAT ONLY ONE VEHICLE AT A TIME IS PERMITTED ON ALL BRIDGES ON THESE ROUTES.

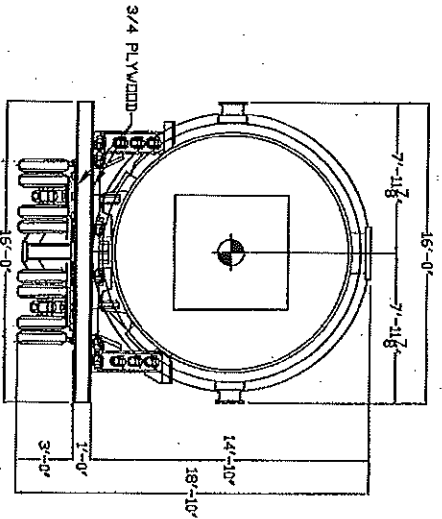
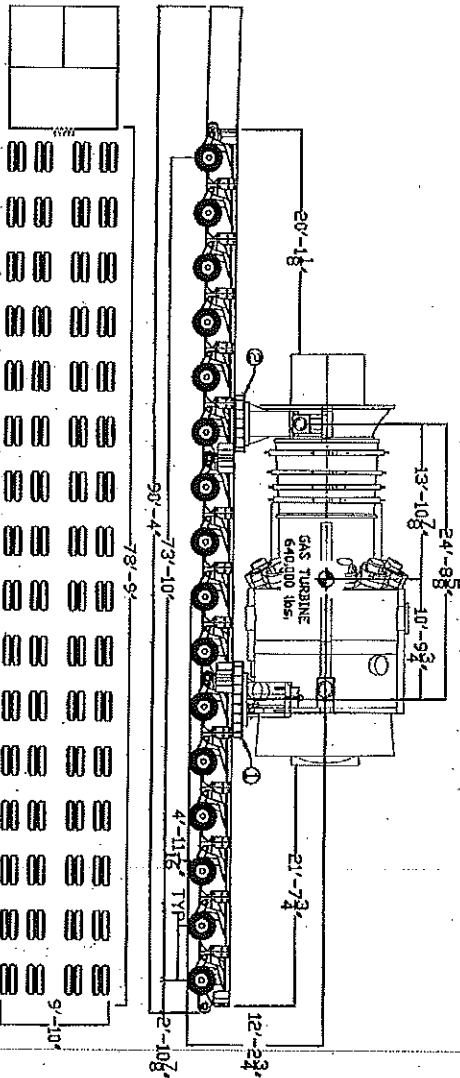
SIGNATURE **Jared Bush**

TITLE _____

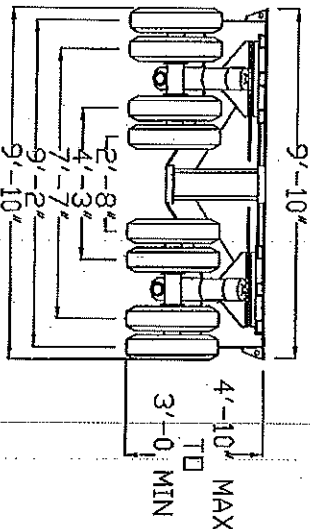
DATE **9/11/15**

Axle Spacing Feet & inches	Axle No.	AXLE LOADS Gross axle loads, Lbs	TIRES	
			No. On Axle	Sizes
G. 4-11	12.	49,685	8	8.5
	13.	49,685	8	8.5
H. 4-11	14.	49,685	8	8.5
	15.	49,685	8	8.5
I. 4-11	16.	49,685	8	8.5
	17.			
J. _____	18.			
	19.			
K. _____	20.			
	21.			
L. _____	22.			
	23.			
Total Gross Weight		794,960	Estimated Number of Trips	

TRAILER LOAD DATA - WEIGHT (LBS.)																
GOLDFOSHER, 16 LINE POST-CL																
AXLE	1	2	3	4	5	6	7	8	9	10	11	12	13	14	15	16
TIRES/AXLE	8	8	8	8	8	8	8	8	8	8	8	8	8	8	8	8
TARE WT.	8,722	8,722	8,722	8,722	8,722	8,722	8,722	8,722	8,722	8,722	8,722	8,722	8,722	8,722	8,722	8,722
LOAD WT.	40,963	40,963	40,963	40,963	40,963	40,963	40,963	40,963	40,963	40,963	40,963	40,963	40,963	40,963	40,963	40,963
GROSS WT.	49,685	49,685	49,685	49,685	49,685	49,685	49,685	49,685	49,685	49,685	49,685	49,685	49,685	49,685	49,685	49,685
WT. PER TIRE	6,211	6,211	6,211	6,211	6,211	6,211	6,211	6,211	6,211	6,211	6,211	6,211	6,211	6,211	6,211	6,211
TIRE SIZE	215/75R17.5	215/75R17.5	215/75R17.5	215/75R17.5	215/75R17.5	215/75R17.5	215/75R17.5	215/75R17.5	215/75R17.5	215/75R17.5	215/75R17.5	215/75R17.5	215/75R17.5	215/75R17.5	215/75R17.5	215/75R17.5
LATERAL IN.	8.5	8.5	8.5	8.5	8.5	8.5	8.5	8.5	8.5	8.5	8.5	8.5	8.5	8.5	8.5	8.5
WT. PER LATERAL IN.	730.7	730.7	730.7	730.7	730.7	730.7	730.7	730.7	730.7	730.7	730.7	730.7	730.7	730.7	730.7	730.7
TOTAL																



GROUND BEARING = 1,026 psf BASED ON SHADOW AREA OF DECK



BILL OF MATERIAL			
ITEM NO.	DESCRIPTION	QUANTITY	UNIT
1	SUPPORT FOR GAS TURBINE	1	EA
2	SUPPORT FOR GAS TURBINE	1	EA
3	SUPPORT FOR GAS TURBINE	1	EA
4	SUPPORT FOR GAS TURBINE	1	EA
5	SUPPORT FOR GAS TURBINE	1	EA
6	SUPPORT FOR GAS TURBINE	1	EA
7	SUPPORT FOR GAS TURBINE	1	EA
8	SUPPORT FOR GAS TURBINE	1	EA
9	SUPPORT FOR GAS TURBINE	1	EA
10	SUPPORT FOR GAS TURBINE	1	EA
11	SUPPORT FOR GAS TURBINE	1	EA
12	SUPPORT FOR GAS TURBINE	1	EA
13	SUPPORT FOR GAS TURBINE	1	EA
14	SUPPORT FOR GAS TURBINE	1	EA
15	SUPPORT FOR GAS TURBINE	1	EA
16	SUPPORT FOR GAS TURBINE	1	EA
17	SUPPORT FOR GAS TURBINE	1	EA
18	SUPPORT FOR GAS TURBINE	1	EA
19	SUPPORT FOR GAS TURBINE	1	EA
20	SUPPORT FOR GAS TURBINE	1	EA
21	SUPPORT FOR GAS TURBINE	1	EA
22	SUPPORT FOR GAS TURBINE	1	EA
23	SUPPORT FOR GAS TURBINE	1	EA
24	SUPPORT FOR GAS TURBINE	1	EA
25	SUPPORT FOR GAS TURBINE	1	EA
26	SUPPORT FOR GAS TURBINE	1	EA
27	SUPPORT FOR GAS TURBINE	1	EA
28	SUPPORT FOR GAS TURBINE	1	EA
29	SUPPORT FOR GAS TURBINE	1	EA
30	SUPPORT FOR GAS TURBINE	1	EA
31	SUPPORT FOR GAS TURBINE	1	EA
32	SUPPORT FOR GAS TURBINE	1	EA
33	SUPPORT FOR GAS TURBINE	1	EA
34	SUPPORT FOR GAS TURBINE	1	EA
35	SUPPORT FOR GAS TURBINE	1	EA
36	SUPPORT FOR GAS TURBINE	1	EA
37	SUPPORT FOR GAS TURBINE	1	EA
38	SUPPORT FOR GAS TURBINE	1	EA
39	SUPPORT FOR GAS TURBINE	1	EA
40	SUPPORT FOR GAS TURBINE	1	EA
41	SUPPORT FOR GAS TURBINE	1	EA
42	SUPPORT FOR GAS TURBINE	1	EA
43	SUPPORT FOR GAS TURBINE	1	EA
44	SUPPORT FOR GAS TURBINE	1	EA
45	SUPPORT FOR GAS TURBINE	1	EA
46	SUPPORT FOR GAS TURBINE	1	EA
47	SUPPORT FOR GAS TURBINE	1	EA
48	SUPPORT FOR GAS TURBINE	1	EA
49	SUPPORT FOR GAS TURBINE	1	EA
50	SUPPORT FOR GAS TURBINE	1	EA
51	SUPPORT FOR GAS TURBINE	1	EA
52	SUPPORT FOR GAS TURBINE	1	EA
53	SUPPORT FOR GAS TURBINE	1	EA
54	SUPPORT FOR GAS TURBINE	1	EA
55	SUPPORT FOR GAS TURBINE	1	EA
56	SUPPORT FOR GAS TURBINE	1	EA
57	SUPPORT FOR GAS TURBINE	1	EA
58	SUPPORT FOR GAS TURBINE	1	EA
59	SUPPORT FOR GAS TURBINE	1	EA
60	SUPPORT FOR GAS TURBINE	1	EA
61	SUPPORT FOR GAS TURBINE	1	EA
62	SUPPORT FOR GAS TURBINE	1	EA
63	SUPPORT FOR GAS TURBINE	1	EA
64	SUPPORT FOR GAS TURBINE	1	EA
65	SUPPORT FOR GAS TURBINE	1	EA
66	SUPPORT FOR GAS TURBINE	1	EA
67	SUPPORT FOR GAS TURBINE	1	EA
68	SUPPORT FOR GAS TURBINE	1	EA
69	SUPPORT FOR GAS TURBINE	1	EA
70	SUPPORT FOR GAS TURBINE	1	EA
71	SUPPORT FOR GAS TURBINE	1	EA
72	SUPPORT FOR GAS TURBINE	1	EA
73	SUPPORT FOR GAS TURBINE	1	EA
74	SUPPORT FOR GAS TURBINE	1	EA
75	SUPPORT FOR GAS TURBINE	1	EA
76	SUPPORT FOR GAS TURBINE	1	EA
77	SUPPORT FOR GAS TURBINE	1	EA
78	SUPPORT FOR GAS TURBINE	1	EA
79	SUPPORT FOR GAS TURBINE	1	EA
80	SUPPORT FOR GAS TURBINE	1	EA
81	SUPPORT FOR GAS TURBINE	1	EA
82	SUPPORT FOR GAS TURBINE	1	EA
83	SUPPORT FOR GAS TURBINE	1	EA
84	SUPPORT FOR GAS TURBINE	1	EA
85	SUPPORT FOR GAS TURBINE	1	EA
86	SUPPORT FOR GAS TURBINE	1	EA
87	SUPPORT FOR GAS TURBINE	1	EA
88	SUPPORT FOR GAS TURBINE	1	EA
89	SUPPORT FOR GAS TURBINE	1	EA
90	SUPPORT FOR GAS TURBINE	1	EA
91	SUPPORT FOR GAS TURBINE	1	EA
92	SUPPORT FOR GAS TURBINE	1	EA
93	SUPPORT FOR GAS TURBINE	1	EA
94	SUPPORT FOR GAS TURBINE	1	EA
95	SUPPORT FOR GAS TURBINE	1	EA
96	SUPPORT FOR GAS TURBINE	1	EA
97	SUPPORT FOR GAS TURBINE	1	EA
98	SUPPORT FOR GAS TURBINE	1	EA
99	SUPPORT FOR GAS TURBINE	1	EA
100	SUPPORT FOR GAS TURBINE	1	EA

BEAM DIMENSION LIST			
SHAPE	D	H	T
W8X10	10.00	10.00	10.00
W8X12	12.00	12.00	12.00
W8X14	14.00	14.00	14.00
W8X16	16.00	16.00	16.00
W8X18	18.00	18.00	18.00
W8X20	20.00	20.00	20.00
W8X22	22.00	22.00	22.00
W8X24	24.00	24.00	24.00
W8X26	26.00	26.00	26.00
W8X28	28.00	28.00	28.00
W8X30	30.00	30.00	30.00
W8X32	32.00	32.00	32.00
W8X34	34.00	34.00	34.00
W8X36	36.00	36.00	36.00
W8X38	38.00	38.00	38.00
W8X40	40.00	40.00	40.00
W8X42	42.00	42.00	42.00
W8X44	44.00	44.00	44.00
W8X46	46.00	46.00	46.00
W8X48	48.00	48.00	48.00
W8X50	50.00	50.00	50.00
W8X52	52.00	52.00	52.00
W8X54	54.00	54.00	54.00
W8X56	56.00	56.00	56.00
W8X58	58.00	58.00	58.00
W8X60	60.00	60.00	60.00
W8X62	62.00	62.00	62.00
W8X64	64.00	64.00	64.00
W8X66	66.00	66.00	66.00
W8X68	68.00	68.00	68.00
W8X70	70.00	70.00	70.00
W8X72	72.00	72.00	72.00
W8X74	74.00	74.00	74.00
W8X76	76.00	76.00	76.00
W8X78	78.00	78.00	78.00
W8X80	80.00	80.00	80.00
W8X82	82.00	82.00	82.00
W8X84	84.00	84.00	84.00
W8X86	86.00	86.00	86.00
W8X88	88.00	88.00	88.00
W8X90	90.00	90.00	90.00
W8X92	92.00	92.00	92.00
W8X94	94.00	94.00	94.00
W8X96	96.00	96.00	96.00
W8X98	98.00	98.00	98.00
W8X100	100.00	100.00	100.00

Notes:
 (1) Load chart rounds decimals to the nearest whole number.
 (2) Load wt. includes weight of support beams

Bulkhauler
 LOGGING, MINING & TRANSPORT PROFESSIONALS

228 006 10 0

0 ORIGINAL ISSUE
 REV DESCRIPTION
 1 16 LINE POST-CL
 2 16 LINE POST-CL
 3 16 LINE POST-CL
 4 16 LINE POST-CL
 5 16 LINE POST-CL
 6 16 LINE POST-CL
 7 16 LINE POST-CL
 8 16 LINE POST-CL
 9 16 LINE POST-CL
 10 16 LINE POST-CL
 11 16 LINE POST-CL
 12 16 LINE POST-CL
 13 16 LINE POST-CL
 14 16 LINE POST-CL
 15 16 LINE POST-CL
 16 16 LINE POST-CL
 17 16 LINE POST-CL
 18 16 LINE POST-CL
 19 16 LINE POST-CL
 20 16 LINE POST-CL
 21 16 LINE POST-CL
 22 16 LINE POST-CL
 23 16 LINE POST-CL
 24 16 LINE POST-CL
 25 16 LINE POST-CL
 26 16 LINE POST-CL
 27 16 LINE POST-CL
 28 16 LINE POST-CL
 29 16 LINE POST-CL
 30 16 LINE POST-CL
 31 16 LINE POST-CL
 32 16 LINE POST-CL
 33 16 LINE POST-CL
 34 16 LINE POST-CL
 35 16 LINE POST-CL
 36 16 LINE POST-CL
 37 16 LINE POST-CL
 38 16 LINE POST-CL
 39 16 LINE POST-CL
 40 16 LINE POST-CL
 41 16 LINE POST-CL
 42 16 LINE POST-CL
 43 16 LINE POST-CL
 44 16 LINE POST-CL
 45 16 LINE POST-CL
 46 16 LINE POST-CL
 47 16 LINE POST-CL
 48 16 LINE POST-CL
 49 16 LINE POST-CL
 50 16 LINE POST-CL
 51 16 LINE POST-CL
 52 16 LINE POST-CL
 53 16 LINE POST-CL
 54 16 LINE POST-CL
 55 16 LINE POST-CL
 56 16 LINE POST-CL
 57 16 LINE POST-CL
 58 16 LINE POST-CL
 59 16 LINE POST-CL
 60 16 LINE POST-CL
 61 16 LINE POST-CL
 62 16 LINE POST-CL
 63 16 LINE POST-CL
 64 16 LINE POST-CL
 65 16 LINE POST-CL
 66 16 LINE POST-CL
 67 16 LINE POST-CL
 68 16 LINE POST-CL
 69 16 LINE POST-CL
 70 16 LINE POST-CL
 71 16 LINE POST-CL
 72 16 LINE POST-CL
 73 16 LINE POST-CL
 74 16 LINE POST-CL
 75 16 LINE POST-CL
 76 16 LINE POST-CL
 77 16 LINE POST-CL
 78 16 LINE POST-CL
 79 16 LINE POST-CL
 80 16 LINE POST-CL
 81 16 LINE POST-CL
 82 16 LINE POST-CL
 83 16 LINE POST-CL
 84 16 LINE POST-CL
 85 16 LINE POST-CL
 86 16 LINE POST-CL
 87 16 LINE POST-CL
 88 16 LINE POST-CL
 89 16 LINE POST-CL
 90 16 LINE POST-CL
 91 16 LINE POST-CL
 92 16 LINE POST-CL
 93 16 LINE POST-CL
 94 16 LINE POST-CL
 95 16 LINE POST-CL
 96 16 LINE POST-CL
 97 16 LINE POST-CL
 98 16 LINE POST-CL
 99 16 LINE POST-CL
 100 16 LINE POST-CL



City of Toledo, Ohio
Department of Inspection

APPLICATIONS FOR SPECIAL HAULING

Please Typewrite Legibly. Illegible applications will be rejected.

PERMIT NO. _____

Mail or Deliver To:
One Stop Shop
One Government Center
Suite 1600
Toledo, Ohio 43604
Telephone: (419) 245-1210

Name of Applicant: JARED Bush				Date: _____	
Name of Company: Burkhalter Rigging, Inc.				Type of Permit: <input type="checkbox"/> Trip <input checked="" type="checkbox"/> Trip & Return <input type="checkbox"/> Quarterly <input type="checkbox"/> Annual <input type="checkbox"/> Other (Specify): _____	
Address: 2193 Hwy 45 S Columbus, MS 39701				Fee \$ _____ Paid By: _____	
City: _____ State: _____ Zip/Postal Code: _____		Telephone: 662-889-0002 Ext. _____ Fax: 662-327-4401		<input type="checkbox"/> Cash <input type="checkbox"/> Check <input type="checkbox"/> Money Order <input checked="" type="checkbox"/> Credit Card	
Nature of Move: Heavy Haul to Oregon Clean Energy					
MAKE & MODEL	LICENSE NO.	STATE	WEIGHT IN TONS	Make checks payable to: City of Toledo	
Truck or Tractor:	N/A		WEIGHT EMPTY	THIS PERMIT IS VALID	
Semi-Trailer:	N/A			BEGINNING 9/10 9/17/15	
Other Trailer:				ENDING 9/17 9/24/15	
PST Goldhofer	07GSP3	MS	139,552	All Dimensions Feet & Inches	
Description of Load Including Make & Model: Generator			Net Load: 681,1030	DIMENSIONS	
If Applicable:			Total Gross Wt: 835,584	Vehicle & Load Overall	
CHECK IF APPLICABLE: <input type="checkbox"/> Load is towed on its own frame and undercarriage. <input checked="" type="checkbox"/> Load is under its own power. <input type="checkbox"/> Variable trailers, see attached list.			<input type="checkbox"/> All weights (net & gross) are LEGAL in accordance with Section 5277.04 Ohio Revised Code. If checked, do not complete axle loads & spacing section of this application.	Length	Height
				90-4	17-6
				Width	
				15-0	
				Load Only Height	
				38-0	13-4
				14-10	
MOVEMENT TO BE MADE					
From: Port of Toledo					
To: Oregon Clean Energy Center					
Designated Route:					
1. Exit Port of Toledo onto Front St.					
2. Left turn (EB) onto Millard Ave.					
3. Right turn (SB) onto Old Millard Ave (EB) across Jumper Bridge & RR					
4. Left turn (WB) onto Otter Creek Rd					
5. Right turn (EB) onto Cedar Point Rd					
6. Right turn (SB) onto Callandorf Rd					
7. Left turn (EB) onto site Oregon					
AXLE SPACING: Feet & inches:	AXLE NO.	AXLE LOADS: Gross axle loads, lbs	TIRES		
			No. On Axle	Size	
A-11	1.	52,224	8	8.5	
	2.	52,224	8	8.5	
B-4-11	3.	52,224	8	8.5	
	4.	52,224	8	8.5	
C-4-11	5.	52,224	8	8.5	
	6.	52,224	8	8.5	
D-4-11	7.	52,224	8	8.5	
	8.	52,224	8	8.5	
E-4-11	9.	52,224	8	8.5	
	10.	52,224	8	8.5	
F-4-11	11.	52,224	8	8.5	
	12.	52,224	8	8.5	
Total Gross Weight:		835,584	Estimated Number of Trips: 1		

Limitations listed on back of this application form apply. Special provisions as checked on back of this form apply. Move only during daylight hours. Movement is prohibited on Saturdays, Sundays, and holidays. Permittee is responsible for providing all above listed information and measurements. Permittee is responsible to check route for abnormal or changed or unknown conditions which may exist along route.

I, **JARED Bush**, do hereby swear that I am the applicant or his/her legally authorized representative and the statements made in the foregoing application are true and correct to the best of my knowledge. SPECIAL ATTENTION HAS BEEN GIVEN TO ENSURE THE ACCURACY OF THE MEASUREMENTS OF THE ABOVE LISTED AXLE SPACING AND SPECIFIC VEHICLE UNDERSTAND THAT ONLY ONE VEHICLE AT A TIME IS PERMITTED ON ALL BRIDGES ON THESE ROUTES.

SIGNATURE: Jared Bush
TITLE: _____ DATE: 9/11/15

PERMIT OFFICE USE ONLY
VOID IF BLANK, ALTERED, OR UNSIGNED

APPROVED: _____

Department of Inspection

SBH

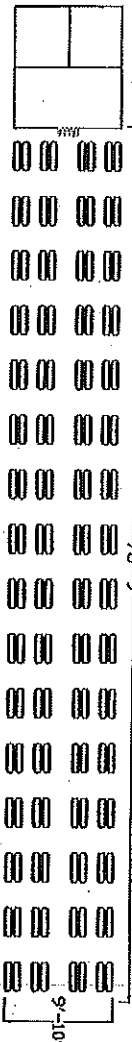
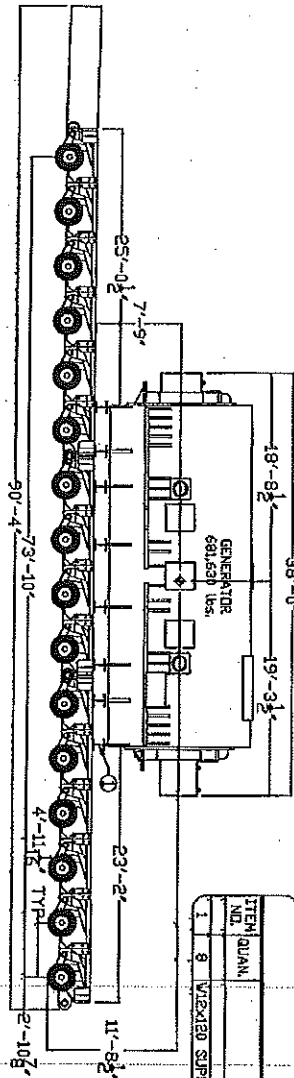
Axle Spacing Feet & inches	Axle No.	AXLE LOADS Gross axle loads, Lbs	TIRES	
			No. On Axle	Sizes
G. 4-11	12.	52,224	8	8.5
	13.	52,224	8	8.5
H. 4-11	14.	52,224	8	8.5
	15.	52,224	8	8.5
I. 4-11	16.	52,224	8	8.5
	17.			
J. _____	18.			
	19.			
K. _____	20.			
	21.			
L. _____	22.			
	23.			
Total Gross Weight		835,584	Estimated Number of Trips	

1

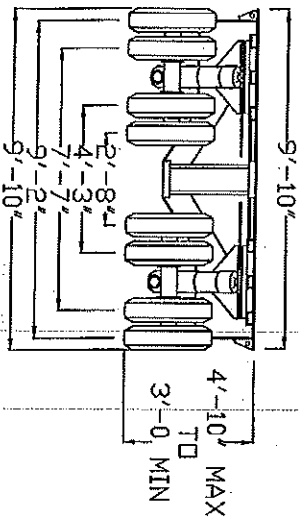
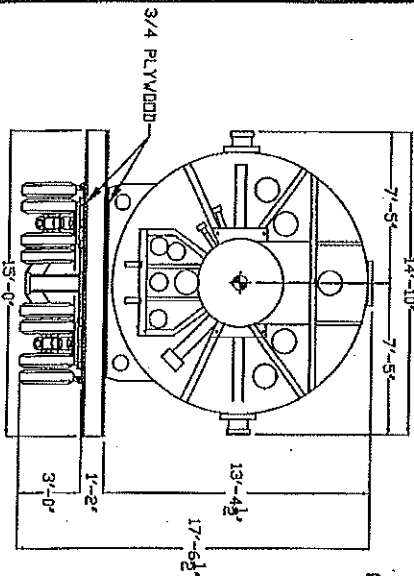
TRAILER LOAD DATA - WEIGHT (LBS.)															
GOLDHOFER - 16 LINE PST/SL															
AXLE	1	2	3	4	5	6	7	8	9	10	11	12	13	14	15
TIRES/AXLE	8	8	8	8	8	8	8	8	8	8	8	8	8	8	8
TAKE WT.	8,722	8,722	8,722	8,722	8,722	8,722	8,722	8,722	8,722	8,722	8,722	8,722	8,722	8,722	8,722
LOAD WT.	43,502	43,502	43,502	43,502	43,502	43,502	43,502	43,502	43,502	43,502	43,502	43,502	43,502	43,502	43,502
GROSS WT.	52,224	52,224	52,224	52,224	52,224	52,224	52,224	52,224	52,224	52,224	52,224	52,224	52,224	52,224	52,224
WT. PER TIRE	6,528	6,528	6,528	6,528	6,528	6,528	6,528	6,528	6,528	6,528	6,528	6,528	6,528	6,528	6,528
TIRE SIZE	215/75R15	215/75R15	215/75R15	215/75R15	215/75R15	215/75R15	215/75R15	215/75R15	215/75R15	215/75R15	215/75R15	215/75R15	215/75R15	215/75R15	215/75R15
LATERAL IN.	8.5	8.5	8.5	8.5	8.5	8.5	8.5	8.5	8.5	8.5	8.5	8.5	8.5	8.5	8.5
WT. PER LATERAL IN.	768.0	768.0	768.0	768.0	768.0	768.0	768.0	768.0	768.0	768.0	768.0	768.0	768.0	768.0	768.0

BILL OF MATERIAL

ITEM NO.	QUAN.	DESCRIPTION	LENGTH	VT. EA.	COMBINED
1	8	WELD-180 SUPPORT BEAM Q4572 GR-50	15	0	14,400
TOTAL = 14,400 LBS.					



GROUND BEARING = 1,078 PSF BASED ON SHADOW AREA OF DECK



BEAM DIMENSION LIST									
SIZE	12	12	12	12	12	12	12	12	12
WIDTH	12	12	12	12	12	12	12	12	12
THICKNESS	12	12	12	12	12	12	12	12	12

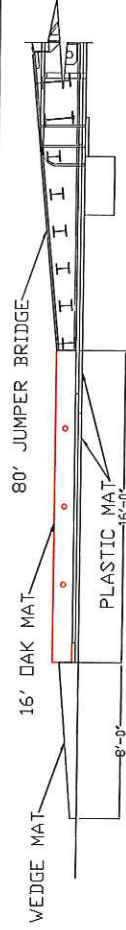
Note:
(1) Load chart rounds decimals to the nearest whole number.
(2) Load wt. includes weight of support beams

PROJECT	OREGON CLEAN ENERGY PROJECT
CLIENT	OTR TRANSPORT 181.2F PST/SL
LOCATION	STEAM GENERATOR (681,630 LBS)
DATE	OREGON, OH
DESIGNED BY	BLACK & VEATCH
CHECKED BY	BLACK & VEATCH
APPROVED BY	BLACK & VEATCH
DATE	228
REV	210
SHEET	10
REV	0

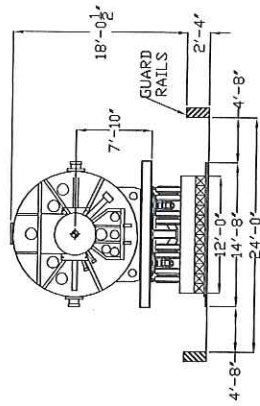
Burkhalter
LIFTING, HOISTING & TRANSPORT PROFESSIONALS

NOTE:
FILL IN WITH CRIBBING &
PLYWOOD AS REQUIRED AT
ELEVATION TRANSITION

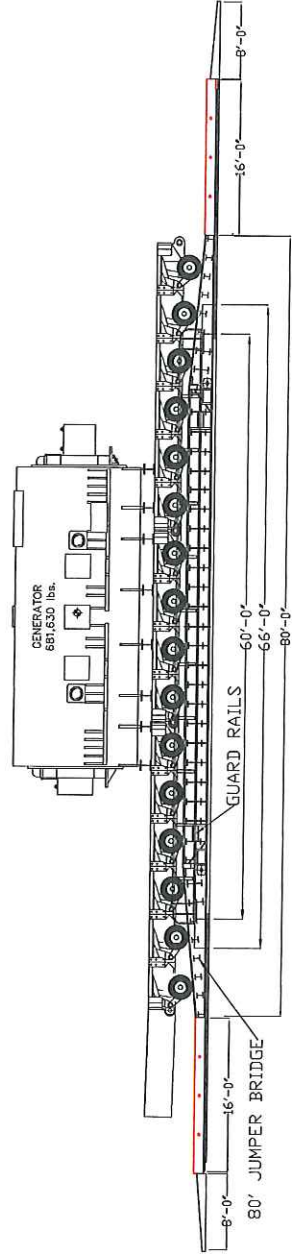
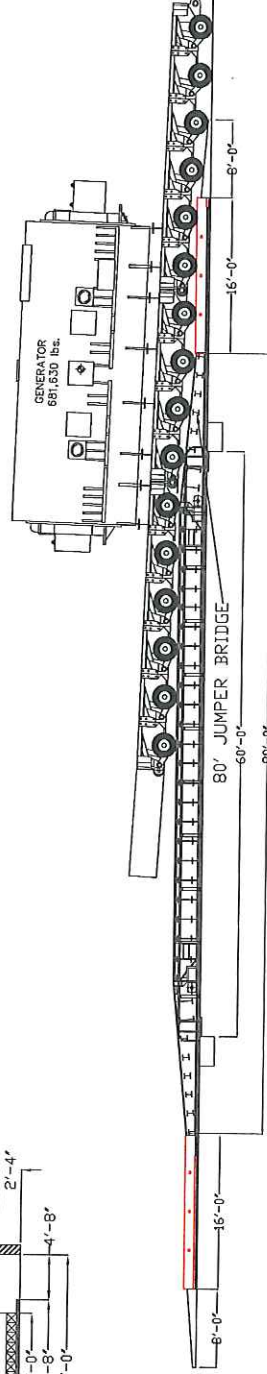
BILL OF MATERIAL				
I.D.#	DESCRIPTION	QTY	LENGTH	WT
1	CRANE MATS	6	16'-0"	3,200
2	JUMPER BRIDGE	1	80'-0"	120,000
3	PLASTIC MAT	8	16'-0"	1,000
4	WEDGE MAT	6	8'-0"	1,000
5				
6				
7				
TOTAL WT				153,200 lbs.



TYPICAL MAT DETAIL



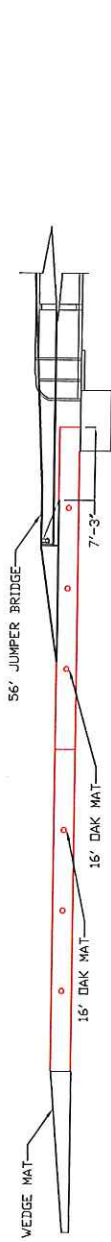
GROUND BEARING PRESSURE UNDER MATS = 3,500 p.s.f.



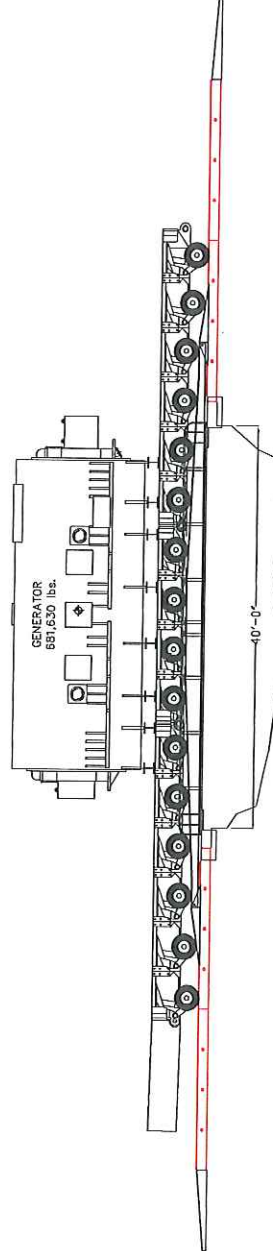
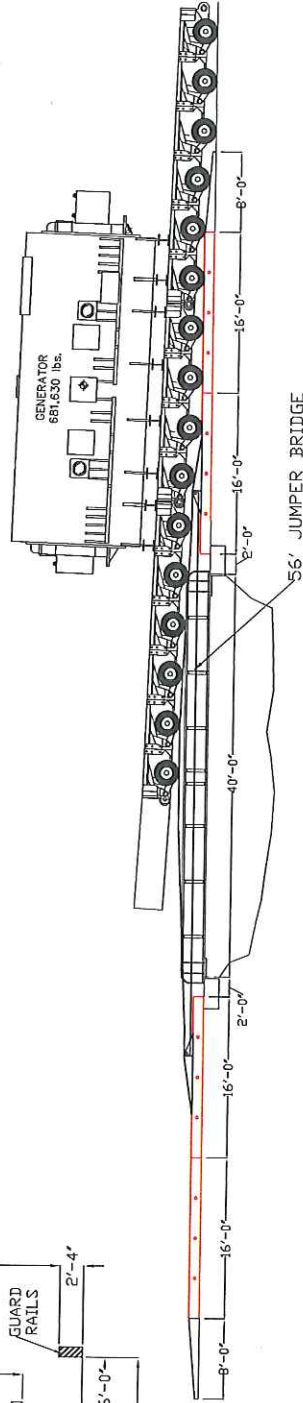
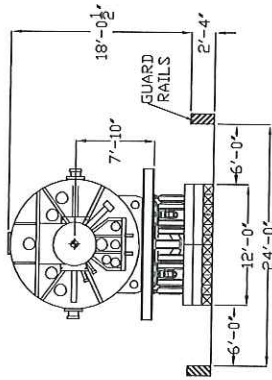
REV	DESCRIPTION	DATE	BY	CHKD
1	ISSUED FOR CONSTRUCTION	07/18/2019	JCB	
REVISIONS				
CLIENT: BLACK & VEATCH				
PROJECT: OREGON CLEAN ENERGY PROJECT				
TITLE: STEAM GENERATOR (681,630 LBS)				
80' JUMPER BRIDGE				
OLD MILLARD ROAD @ DUCK CREEK				
ALL DRAWINGS CONTAIN PROPRIETARY AND CONFIDENTIAL INFORMATION, AND ARE INTENDED FOR EXCLUSIVE USE BY BURKHALTER ONLY.				
WWW.BURKHALTER.NET				
 Burkhalter LIFTING, RIGGING & TRANSPORT PROFESSIONALS				
JOB	DWG	SHEET	REV	
228	610	01	0	

NOTE:
FILL IN WITH CRIBBING &
PLYWOOD AS REQUIRED AT
ELEVATION TRANSITION

BILL OF MATERIAL				
ID.#	DESCRIPTION	QTY	LENGTH	WT
1	CRANE MATS	12	16'-0"	3,200
2	JUMPER BRIDGE	2	80'-0"	32,000
3	WEDGE MAT	6	8'-0"	1,000
4				
5				
6				
7				
				TOTAL WT 108,400 lbs.



GROUND BEARING PRESSURE UNDER MATS = 1,900 p.s.f.



0	ORIGINAL ISSUE	018	00015	JCB
1	REV DESCRIPTION	01	DATE	1/20/02
REVISIONS				
CLIENT: BLACK & VEATCH				
PROJECT: OREGON CLEAN ENERGY PROJECT				
TITLE: STEAM GENERATOR (681,630 LBS)				
56' JUMPER BRIDGE				
OLD MILLARD ROAD @ OTTER CREEK				
ALL DRAWINGS CONTAIN PROPRIETARY AND CONFIDENTIAL INFORMATION, AND ARE INTENDED FOR EXCLUSIVE USE BY BURKHALTER ONLY.				
WWW.BURKHALTER.COM				
Burkhalter				
LIFTING, RIGGING & TRANSPORT PROFESSIONALS				
JOB	DWG	SHEET	REV	
228	620	01	0	

This foregoing document was electronically filed with the Public Utilities

Commission of Ohio Docketing Information System on

9/16/2015 11:16:13 AM

in

Case No(s). 12-2959-EL-BGN

Summary: Correspondence of Oregon Clean Energy, LLC in Compliance with Commitment No. 20 electronically filed by Teresa Orahod on behalf of Sally Bloomfield