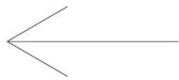
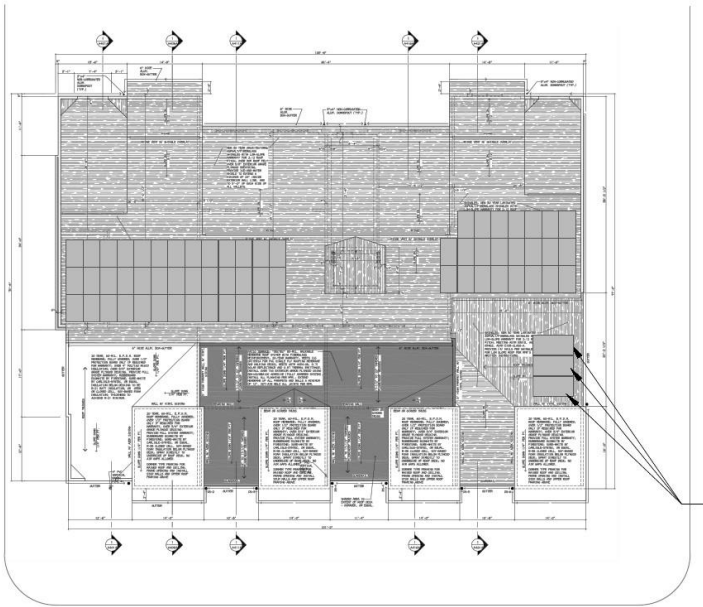


Case No. 15-0490-EL-REN
South Bethlehem Partners, LP
Staff Interrogatories – Initial Set

Question 1:

For Section 'G' of the Application, please submit a layout or scale diagram that depicts the total number of installed solar panels.

See below:



SITE PLAN

This foregoing document was electronically filed with the Public Utilities

Commission of Ohio Docketing Information System on

3/21/2015 3:55:46 PM

in

Case No(s). 15-0490-EL-REN

Summary: Reply in the matter of the diagram of the panel layout for South Bethlehem Partners, LP electronically filed by Mr. Gary Lakritz on behalf of South Bethlehem Partners, LP