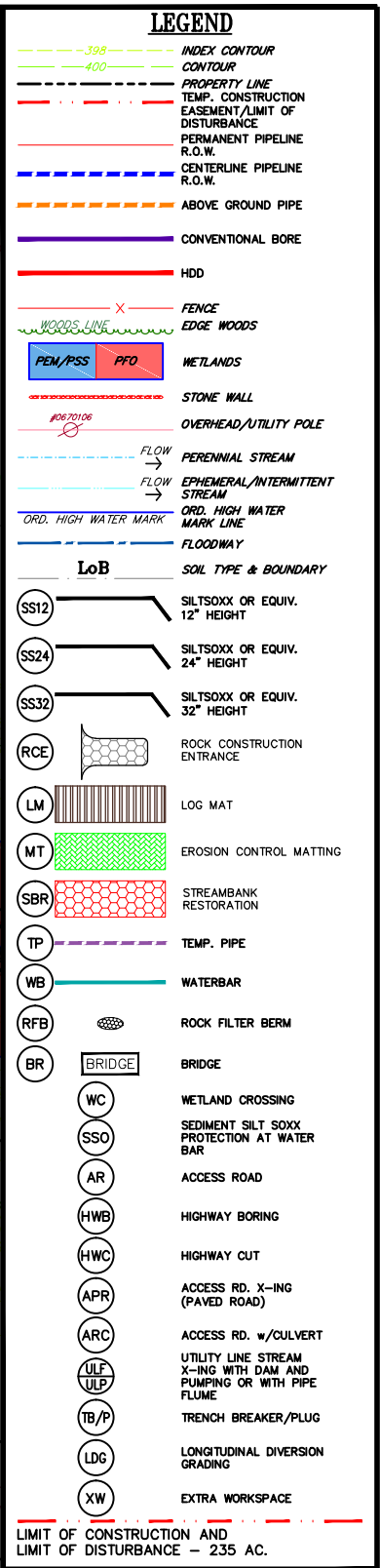
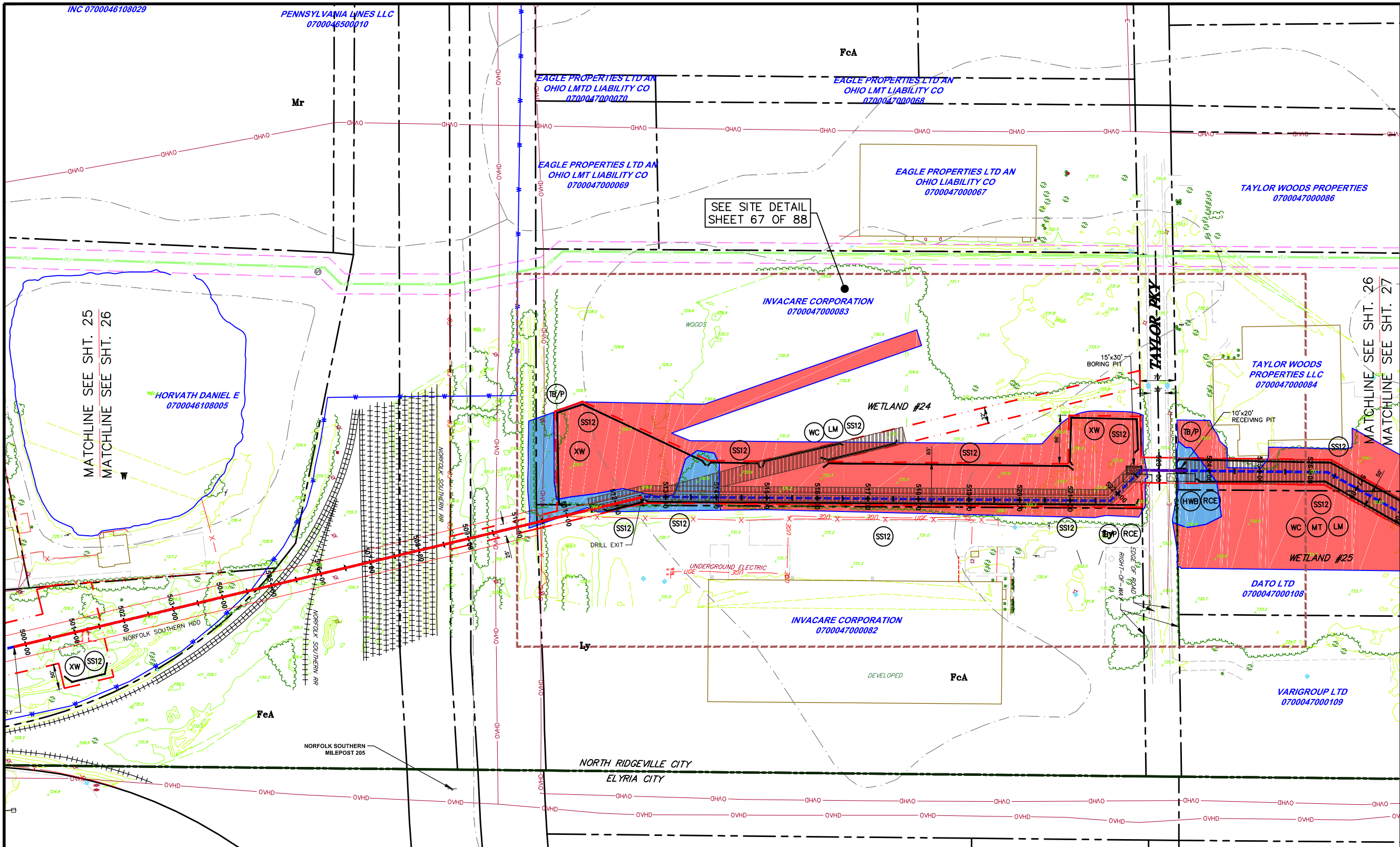




Y:\Projects\Energy\NRG Energy\NRG-1007-Avon Lakes Pipeline\DWG\ESPC\ESPC-NRG-1007-Avon Lake-005-LAYOUT PLANS-001.dwg Dec 14, 2014 -- 4:28pm



**NOTES:**

1. FLOW LENGTH SHOULD BE VERIFIED PRIOR TO CONSTRUCTION. IF FLOW LENGTH EXCEEDS SILT SOCKS LIMITS, SILT SOCKS OF APPROPRIATE SIZE SHALL BE USED.
2. SHALLOW EXCAVATIONS SHOULD NOT CREATE ANY ISSUES FOR GEOLOGICAL FORMATIONS.
3. THE ENTIRE PROJECT AREA WILL BE RESTORED TO EXISTING CONDITIONS OR MEADOW CONDITIONS, UNLESS IT IS CURRENTLY USED AS AN AGRICULTURAL USE, THE THICK, VEGETATIVE COVER WILL HELP MINIMIZE THERMAL IMPACTS. THE PIPELINE R.O.W. WILL BE RESTORED TO ORIGINAL GRADE, WHICH WILL PROMOTE SHEET FLOW WHERE IT CURRENTLY OCCURS, ACROSS A VEGETATED AREA, ACTING AS A FILTER STRIP.
4. SILT SOCK OR CONSTRUCTION FENCE SHALL BE INSTALLED ON BOTH SIDES OF WORKSPACE.

ALL BMP'S SHOULD BE INSPECTED AFTER EACH RUNOFF EVENT EXCEEDING 0.5" IN DEPTH AND ON A WEEKLY BASIS. ANY NECESSARY REPAIRS MUST BE MADE IMMEDIATELY TO ENSURE EFFECTIVE AND EFFICIENT OPERATION.

**GRAPHIC SCALE**



( IN FEET )  
1 inch = 100 ft.

THIS DOCUMENT IS THE PROPERTY OF HANOVER ENGINEERING ASSOCIATES, INC. ANY USE OF A COPY OF THIS DOCUMENT THAT DOES NOT CONTAIN AN ORIGINAL SEAL AND SIGNATURE IS STRICTLY PROHIBITED. THIS DOCUMENT IS NOT PUBLISHED AND ALL RIGHTS ARE RESERVED BY HANOVER ENGINEERING ASSOCIATES, INC. THIS PLAN HAS BEEN SEALED WITH EITHER A RED INK SEAL OR A CRIMP SEAL. IF NEITHER APPEARS ON THIS PLAN, POSSIBLE REPRODUCTIONS OR ALTERATIONS MAY HAVE BEEN MADE WITHOUT THE APPROVAL OR KNOWLEDGE OF THE SIGNATORY.

**E&SPC LAYOUT PLAN**

**AVON LAKE GAS ADDITION PROJECT**

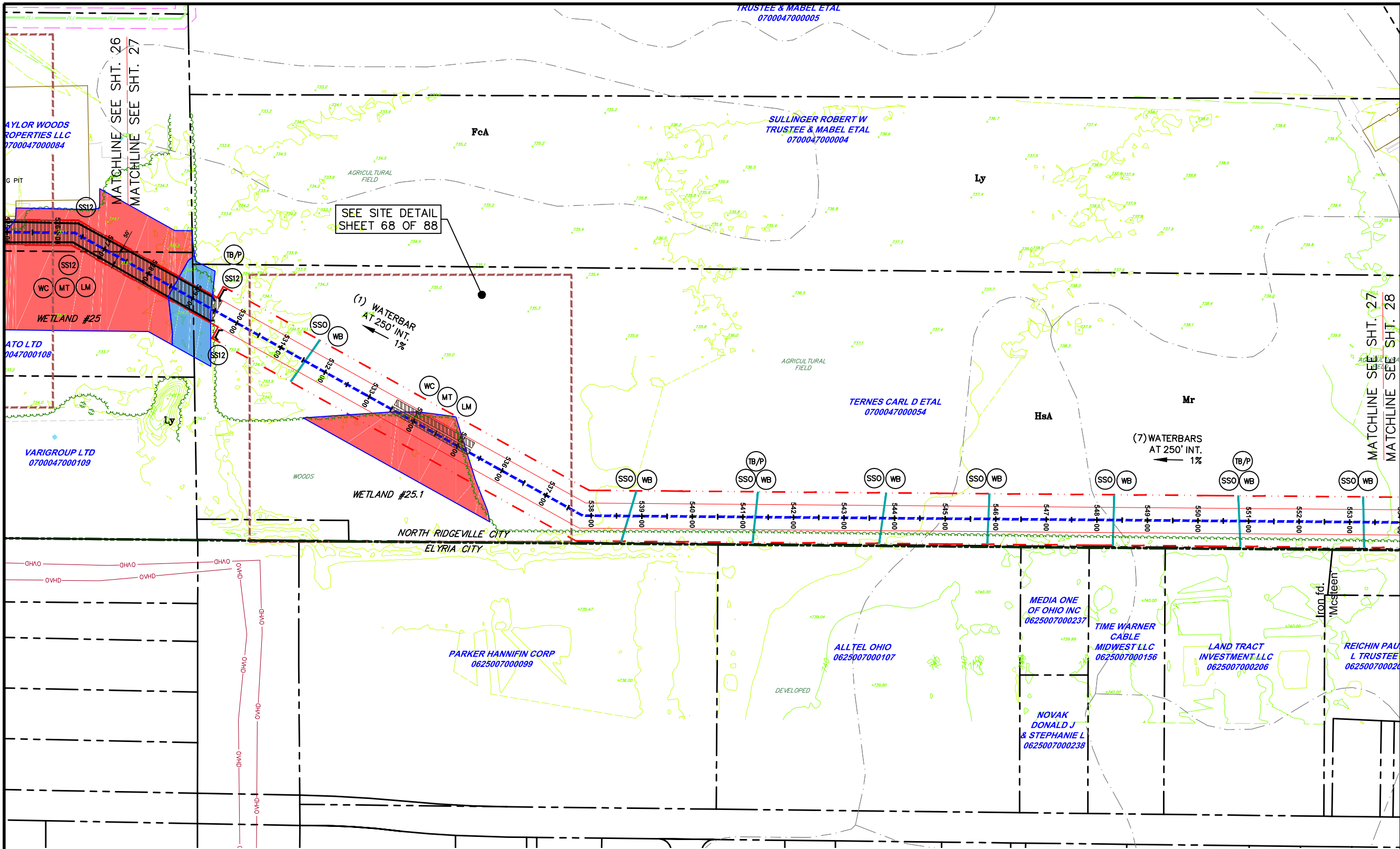
CARLISLE, EATON & LAGRANGE TOWNSHIPS  
AVON, AVON LAKE, ELYRIA &  
NORTH RIDGEVILLE CITIES  
LORAIN COUNTY  
OHIO

**Hanover**  
Engineering Associates Inc

DRAWN BY: AEJ  
CHECKED BY: SJC  
DATE: 12.15.14  
SCALE: 1"=100'  
PROJECT NO. NRG-1007  
SHEET NO. 26 OF 88

3355 Route 611, Suite 1  
Bartonsville, PA 18321-7822  
570.688.9550  
Fax 570.688.9768

Y:\Projects\Energy\NRG Energy\NRG-1007-Avon Lakes Pipeline\DWG\ESPC\ ESPC-NRG-1007-Avon LAKE-005-LAYOUT PLANS-002.dwg Dec 14, 2014 -- 4:38pm



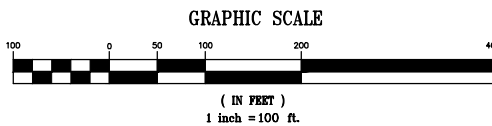
**LEGEND**

- INDEX CONTOUR
- CONTOUR
- PROPERTY LINE
- TEMP. CONSTRUCTION EASEMENT/LIMIT OF DISTURBANCE
- PERMANENT PIPELINE R.O.W.
- CENTERLINE PIPELINE R.O.W.
- ABOVE GROUND PIPE
- CONVENTIONAL BORE
- HDD
- FENCE
- EDGE WOODS
- WETLANDS
- STONE WALL
- OVERHEAD/UTILITY POLE
- PERENNIAL STREAM
- EPHEMERAL/INTERMITTENT STREAM
- ORD. HIGH WATER MARK LINE
- FLOODWAY
- SOIL TYPE & BOUNDARY
- SILT SOCKS OR EQUIV. 12" HEIGHT
- SILT SOCKS OR EQUIV. 24" HEIGHT
- SILT SOCKS OR EQUIV. 32" HEIGHT
- ROCK CONSTRUCTION ENTRANCE
- LOG MAT
- EROSION CONTROL MATTING
- STREAMBANK RESTORATION
- TEMP. PIPE
- WATERBAR
- ROCK FILTER BERM
- BRIDGE
- WETLAND CROSSING
- SEDIMENT SILT SOCK PROTECTION AT WATER BAR
- ACCESS ROAD
- HIGHWAY BORING
- HIGHWAY CUT
- ACCESS RD. X-ING (PAVED ROAD)
- ACCESS RD. w/CULVERT
- UTILITY LINE STREAM X-ING WITH DAM AND PUMPING OR WITH PIPE FLUME
- TRENCH BREAKER/PLUG
- LONGITUDINAL DIVERSION GRADING
- EXTRA WORKSPACE
- LIMIT OF CONSTRUCTION AND LIMIT OF DISTURBANCE - 235 AC.

**NOTES:**

1. FLOW LENGTH SHOULD BE VERIFIED PRIOR TO CONSTRUCTION. IF FLOW LENGTH EXCEEDS SILT SOCKS LIMITS, SILT SOCKS OF APPROPRIATE SIZE SHALL BE USED.
2. SHALLOW EXCAVATIONS SHOULD NOT CREATE ANY ISSUES FOR GEOLOGICAL FORMATIONS.
3. THE ENTIRE PROJECT AREA WILL BE RESTORED TO EXISTING CONDITIONS OR MEADOW CONDITIONS, UNLESS IT IS CURRENTLY USED AS AN AGRICULTURAL USE. THE THICK, VEGETATIVE COVER WILL HELP MINIMIZE THERMAL IMPACTS. THE PIPELINE R.O.W. WILL BE RESTORED TO ORIGINAL GRADE, WHICH WILL PROMOTE SHEET FLOW WHERE IT CURRENTLY OCCURS, ACROSS A VEGETATED AREA, ACTING AS A FILTER STRIP.
4. SILT SOCK OR CONSTRUCTION FENCE SHALL BE INSTALLED ON BOTH SIDES OF WORKSPACE.

ALL BMP'S SHOULD BE INSPECTED AFTER EACH RUNOFF EVENT EXCEEDING 0.5" IN DEPTH AND ON A WEEKLY BASIS. ANY NECESSARY REPAIRS MUST BE MADE IMMEDIATELY TO ENSURE EFFECTIVE AND EFFICIENT OPERATION.



THIS DOCUMENT IS THE PROPERTY OF HANOVER ENGINEERING ASSOCIATES, INC. ANY USE OF A COPY OF THIS DOCUMENT THAT DOES NOT CONTAIN AN ORIGINAL SEAL AND SIGNATURE IS STRICTLY PROHIBITED. THIS DOCUMENT IS NOT PUBLISHED AND ALL RIGHTS ARE RESERVED BY HANOVER ENGINEERING ASSOCIATES, INC. THIS PLAN HAS BEEN SEALED WITH EITHER A RED INK SEAL OR A CRIMP SEAL. IF NEITHER APPEARS ON THIS PLAN, POSSIBLE REPRODUCTIONS OR ALTERATIONS MAY HAVE BEEN MADE WITHOUT THE APPROVAL OR KNOWLEDGE OF THE SIGNATORY.

**E&SPC LAYOUT PLAN**

**AVON LAKE GAS ADDITION PROJECT**

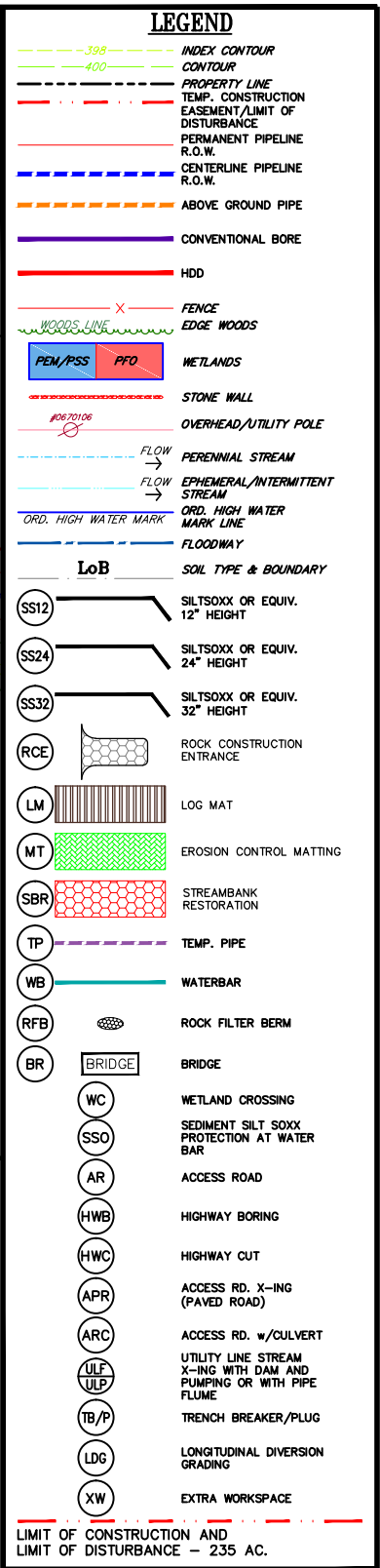
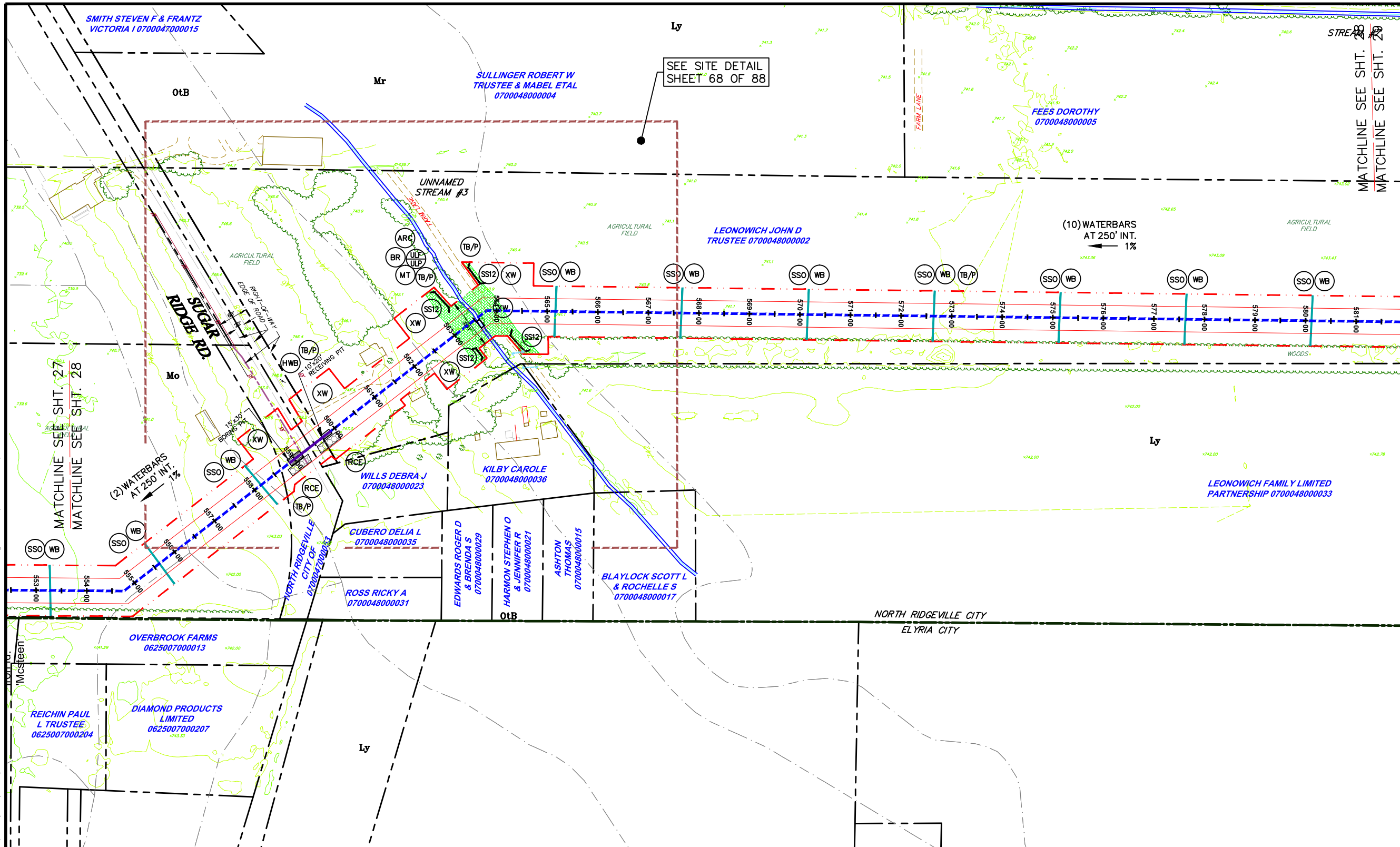
CARLISLE, EATON & LAGRANGE TOWNSHIPS  
AVON, AVON LAKE, ELYRIA &  
NORTH RIDGEVILLE CITIES  
LORAIN COUNTY  
OHIO

**Hanover**  
Engineering Associates Inc

DRAWN BY: AEJ  
CHECKED BY: SJC  
DATE: 12.15.14  
SCALE: 1"=100'  
PROJECT NO. NRG-1007  
SHEET NO. 27 OF 88  
3355 Route 611, Suite 1  
Bartonsville, PA 18321-7822  
570.688.9550  
Fax 570.688.9768



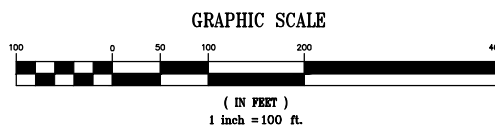
Y:\Projects\Energy\NRG Energy\NRG-1007-Avon Lakes Pipeline\DWG\ESPC\ESPC-NRG-1007-Avon Lake-005-LAYOUT PLANS-002.dwg Dec 14, 2014 -- 4:39pm



**NOTES:**

1. FLOW LENGTH SHOULD BE VERIFIED PRIOR TO CONSTRUCTION. IF FLOW LENGTH EXCEEDS SILT SOCKS LIMITS, SILT SOCKS OF APPROPRIATE SIZE SHALL BE USED.
2. SHALLOW EXCAVATIONS SHOULD NOT CREATE ANY ISSUES FOR GEOLOGICAL FORMATIONS.
3. THE ENTIRE PROJECT AREA WILL BE RESTORED TO EXISTING CONDITIONS OR MEADOW CONDITIONS, UNLESS IT IS CURRENTLY USED AS AN AGRICULTURAL USE. THE THICK, VEGETATIVE COVER WILL HELP MINIMIZE THERMAL IMPACTS. THE PIPELINE R.O.W. WILL BE RESTORED TO ORIGINAL GRADE, WHICH WILL PROMOTE SHEET FLOW WHERE IT CURRENTLY OCCURS, ACROSS A VEGETATED AREA, ACTING AS A FILTER STRIP.
4. SILT SOCK OR CONSTRUCTION FENCE SHALL BE INSTALLED ON BOTH SIDES OF WORKSPACE.

ALL BMP'S SHOULD BE INSPECTED AFTER EACH RUNOFF EVENT EXCEEDING 0.5" IN DEPTH AND ON A WEEKLY BASIS. ANY NECESSARY REPAIRS MUST BE MADE IMMEDIATELY TO ENSURE EFFECTIVE AND EFFICIENT OPERATION.



THIS DOCUMENT IS THE PROPERTY OF HANOVER ENGINEERING ASSOCIATES, INC. ANY USE OF A COPY OF THIS DOCUMENT THAT DOES NOT CONTAIN AN ORIGINAL SEAL AND SIGNATURE IS STRICTLY PROHIBITED. THIS DOCUMENT IS NOT PUBLISHED AND ALL RIGHTS ARE RESERVED BY HANOVER ENGINEERING ASSOCIATES, INC. THIS PLAN HAS BEEN SEALED WITH EITHER A RED INK SEAL OR A CRIMP SEAL. IF NEITHER APPEARS ON THIS PLAN, POSSIBLE REPRODUCTIONS OR ALTERATIONS MAY HAVE BEEN MADE WITHOUT THE APPROVAL OR KNOWLEDGE OF THE SIGNATORY.

SEAL

**E&SPC LAYOUT PLAN**

**AVON LAKE GAS ADDITION PROJECT**

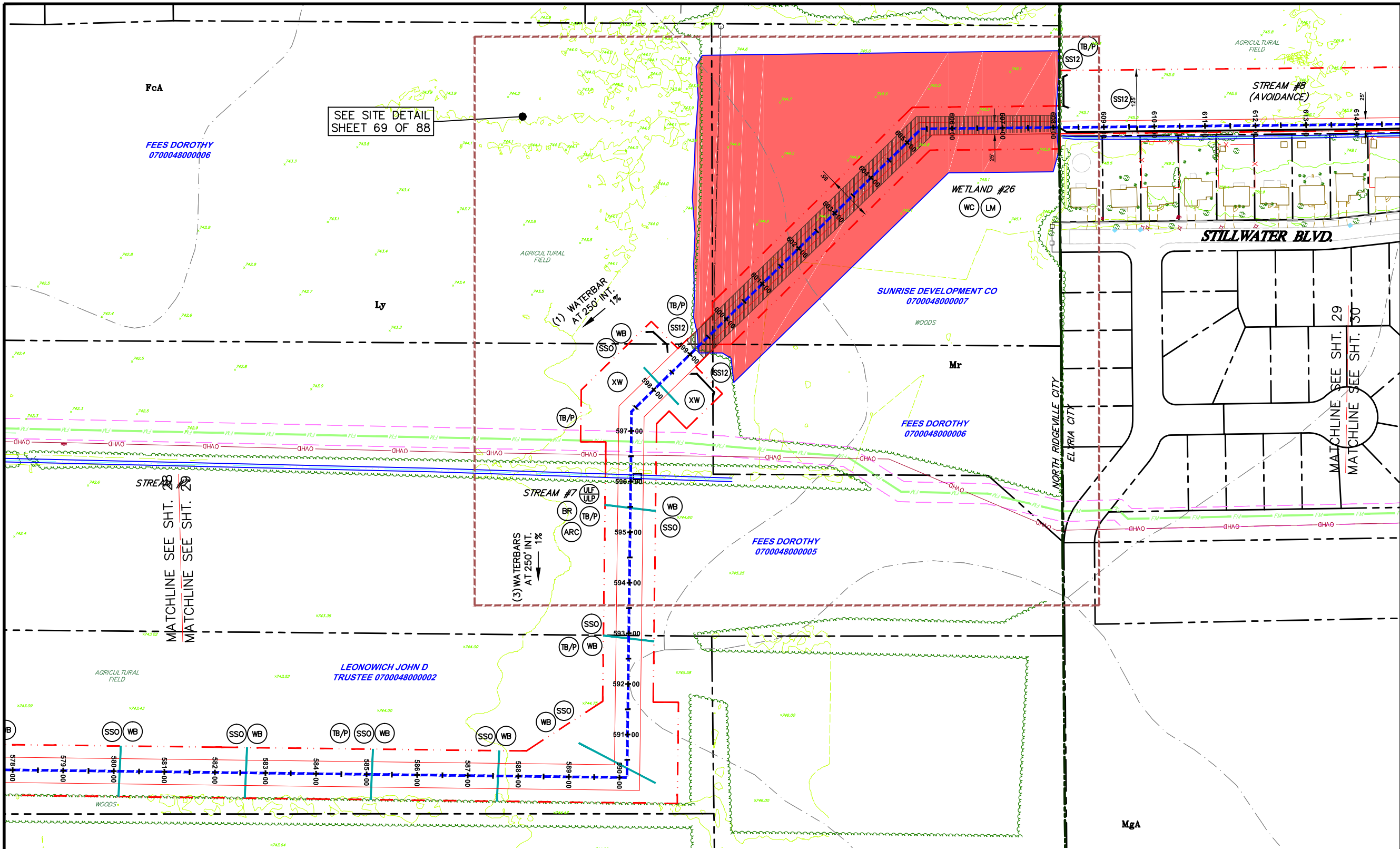
CARLISLE, EATON & LAGRANGE TOWNSHIPS  
AVON, AVON LAKE, ELYRIA &  
NORTH RIDGEVILLE CITIES  
LORAIN COUNTY  
OHIO

**Hanover**  
Engineering Associates Inc

DRAWN BY: AEJ  
CHECKED BY: SJC  
DATE: 12.15.14  
SCALE: 1"=100'  
PROJECT NO. NRG-1007  
SHEET NO. 28 OF 88

3355 Route 611, Suite 1  
Bartonsville, PA 18321-7822  
570.688.9550  
Fax 570.688.9768

Y:\Projects\Energy\NRG Energy\NRG-1007-Avon Lakes Pipeline\DWG\ESPC\ESPC-NRG-1007-Avon Lake-005-LAYOUT PLANS-002.dwg Dec 14, 2014 4:40pm

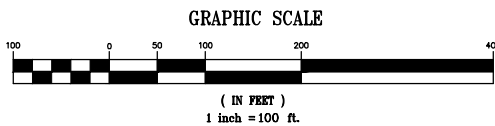


**LEGEND**

- INDEX CONTOUR
- CONTOUR
- PROPERTY LINE
- TEMP. CONSTRUCTION EASEMENT/LIMIT OF DISTURBANCE
- PERMANENT PIPELINE R.O.W.
- CENTERLINE PIPELINE R.O.W.
- ABOVE GROUND PIPE
- CONVENTIONAL BORE
- HDD
- FENCE
- EDGE WOODS
- WETLANDS
- STONE WALL
- OVERHEAD/UTILITY POLE
- PERENNIAL STREAM
- EPHEMERAL/INTERMITTENT STREAM
- ORD. HIGH WATER MARK
- FLOODWAY
- SOIL TYPE & BOUNDARY
- SILT SOCKS OR EQUIV. 12" HEIGHT
- SILT SOCKS OR EQUIV. 24" HEIGHT
- SILT SOCKS OR EQUIV. 32" HEIGHT
- ROCK CONSTRUCTION ENTRANCE
- LOG MAT
- EROSION CONTROL MATTING
- STREAMBANK RESTORATION
- TEMP. PIPE
- WATERBAR
- ROCK FILTER BERM
- BRIDGE
- WETLAND CROSSING
- SEDIMENT SILT SOCK PROTECTION AT WATER BAR
- ACCESS ROAD
- HIGHWAY BORING
- HIGHWAY CUT
- ACCESS RD. X-ING (PAVED ROAD)
- ACCESS RD. w/CULVERT
- UTILITY LINE STREAM X-ING WITH DAM AND PUMPING OR WITH PIPE FLUME
- TRENCH BREAKER/PLUG
- LONGITUDINAL DIVERSION GRADING
- EXTRA WORKSPACE
- LIMIT OF CONSTRUCTION AND LIMIT OF DISTURBANCE - 235 AC.

- NOTES:**
1. FLOW LENGTH SHOULD BE VERIFIED PRIOR TO CONSTRUCTION. IF FLOW LENGTH EXCEEDS SILT SOCKS LIMITS, SILT SOCKS OF APPROPRIATE SIZE SHALL BE USED.
  2. SHALLOW EXCAVATIONS SHOULD NOT CREATE ANY ISSUES FOR GEOLOGICAL FORMATIONS.
  3. THE ENTIRE PROJECT AREA WILL BE RESTORED TO EXISTING CONDITIONS OR MEADOW CONDITIONS, UNLESS IT IS CURRENTLY USED AS AN AGRICULTURAL USE. THE THICK VEGETATIVE COVER WILL HELP MINIMIZE THERMAL IMPACTS. THE PIPELINE R.O.W. WILL BE RESTORED TO ORIGINAL GRADE, WHICH WILL PROMOTE SHEET FLOW WHERE IT CURRENTLY OCCURS, ACROSS A VEGETATED AREA, ACTING AS A FILTER STRIP.
  4. SILT SOCK OR CONSTRUCTION FENCE SHALL BE INSTALLED ON BOTH SIDES OF WORKSPACE.

ALL BMP'S SHOULD BE INSPECTED AFTER EACH RUNOFF EVENT EXCEEDING 0.5" IN DEPTH AND ON A WEEKLY BASIS. ANY NECESSARY REPAIRS MUST BE MADE IMMEDIATELY TO ENSURE EFFECTIVE AND EFFICIENT OPERATION.



THIS DOCUMENT IS THE PROPERTY OF HANOVER ENGINEERING ASSOCIATES, INC. ANY USE OF A COPY OF THIS DOCUMENT THAT DOES NOT CONTAIN AN ORIGINAL SEAL AND SIGNATURE IS STRICTLY PROHIBITED. THIS DOCUMENT IS NOT PUBLISHED AND ALL RIGHTS ARE RESERVED BY HANOVER ENGINEERING ASSOCIATES, INC. THIS PLAN HAS BEEN SEALED WITH EITHER A RED INK SEAL OR A CRIMP SEAL. IF NEITHER APPEARS ON THIS PLAN, POSSIBLE REPRODUCTIONS OR ALTERATIONS MAY HAVE BEEN MADE WITHOUT THE APPROVAL OR KNOWLEDGE OF THE SIGNATORY.

**E&SPC LAYOUT PLAN**

**AVON LAKE GAS ADDITION PROJECT**

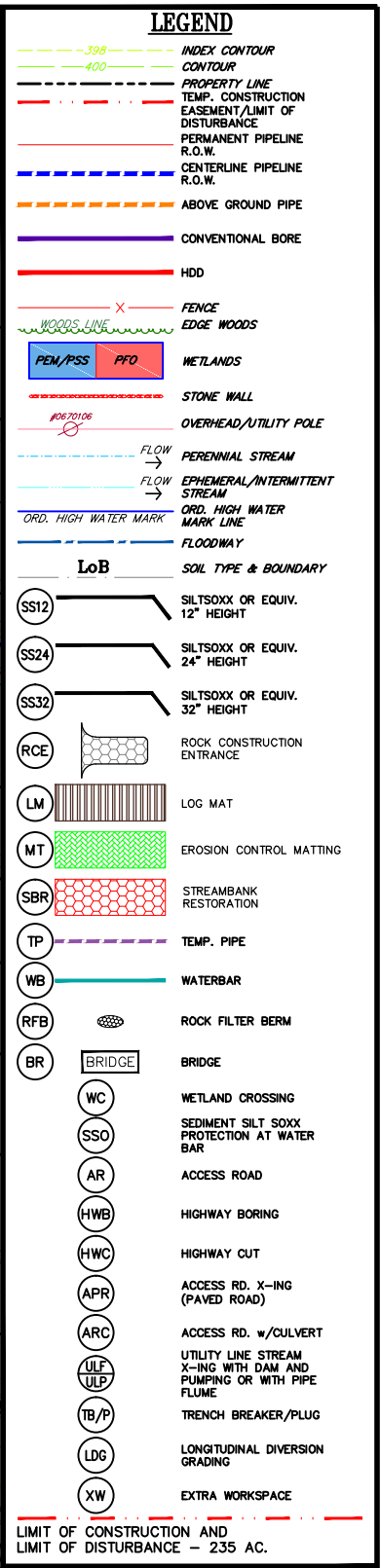
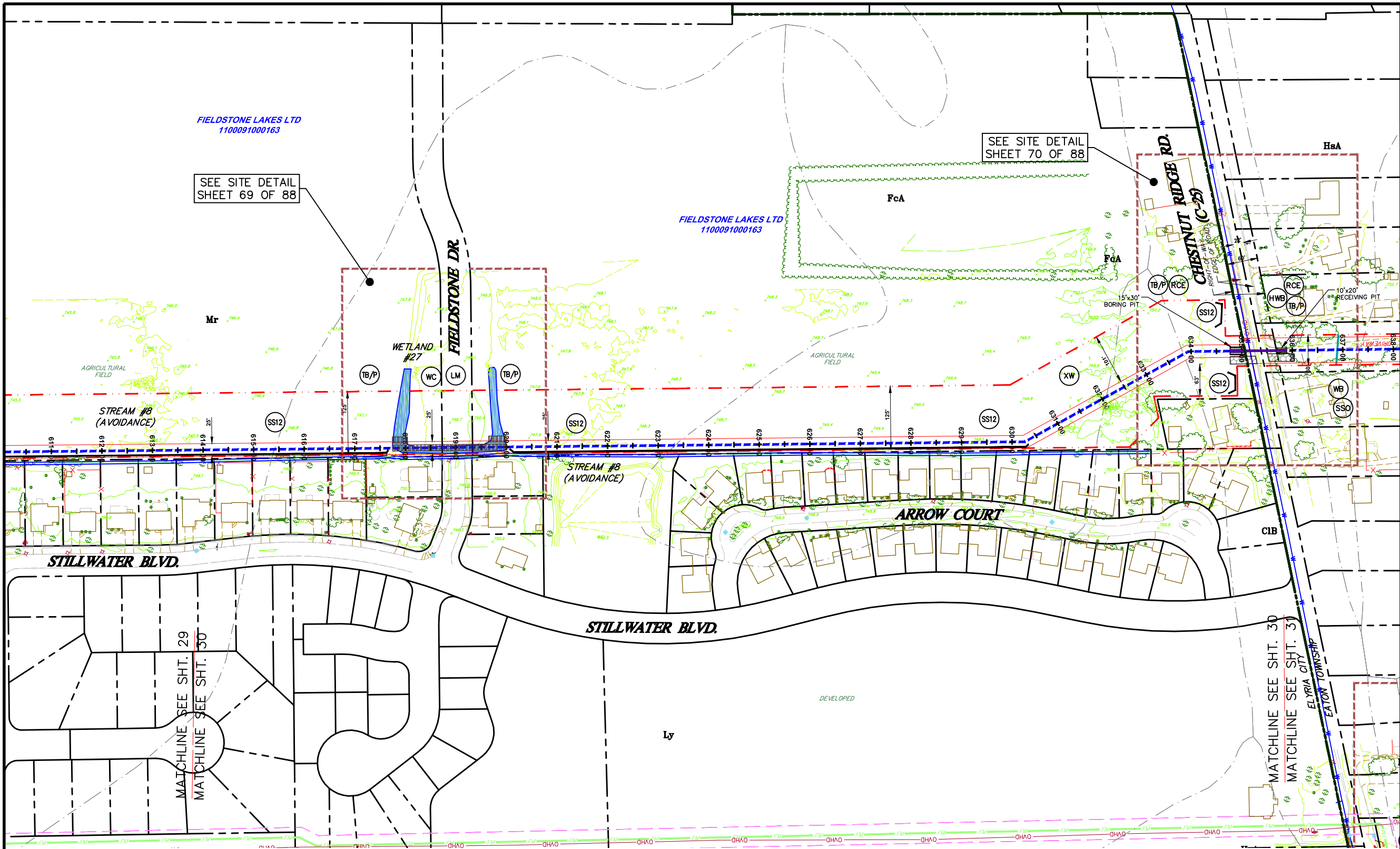
CARLISLE, EATON & LAGRANGE TOWNSHIPS  
AVON, AVON LAKE, ELYRIA &  
NORTH RIDGEVILLE CITIES  
LORAIN COUNTY  
OHIO

**Hanover**  
Engineering Associates Inc

DRAWN BY: AEJ	PROJECT NO. NRG-1007
CHECKED BY: SJC	SHEET NO. 29 OF 88
DATE: 12.15.14	
SCALE: 1"=100'	
3355 Route 611, Suite 1 Bartonsville, PA 18321-7822 570.688.9550 Fax 570.688.9768	



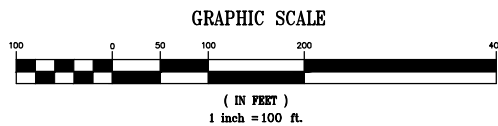
Y:\Projects\Energy\NRG Energy\NRG-1007-Avon Lakes Pipeline\DWG\ESPC\ ESPC-NRG-1007-Avon LAKE-005-LAYOUT PLANS-002.dwg Dec 14, 2014 -- 4:40pm



**NOTES:**

1. FLOW LENGTH SHOULD BE VERIFIED PRIOR TO CONSTRUCTION. IF FLOW LENGTH EXCEEDS SILT SOCKS LIMITS, SILT SOCKS OF APPROPRIATE SIZE SHALL BE USED.
2. SHALLOW EXCAVATIONS SHOULD NOT CREATE ANY ISSUES FOR GEOLOGICAL FORMATIONS.
3. THE ENTIRE PROJECT AREA WILL BE RESTORED TO EXISTING CONDITIONS OR MEADOW CONDITIONS, UNLESS IT IS CURRENTLY USED AS AN AGRICULTURAL USE. THE THICK VEGETATIVE COVER WILL HELP MINIMIZE THERMAL IMPACTS. THE PIPELINE R.O.W. WILL BE RESTORED TO ORIGINAL GRADE, WHICH WILL PROMOTE SHEET FLOW WHERE IT CURRENTLY OCCURS, ACROSS A VEGETATED AREA, ACTING AS A FILTER STRIP.
4. SILT SOCK OR CONSTRUCTION FENCE SHALL BE INSTALLED ON BOTH SIDES OF WORKSPACE.

ALL BMP'S SHOULD BE INSPECTED AFTER EACH RUNOFF EVENT EXCEEDING 0.5" IN DEPTH AND ON A WEEKLY BASIS. ANY NECESSARY REPAIRS MUST BE MADE IMMEDIATELY TO ENSURE EFFECTIVE AND EFFICIENT OPERATION.



THIS DOCUMENT IS THE PROPERTY OF HANOVER ENGINEERING ASSOCIATES, INC. ANY USE OF A COPY OF THIS DOCUMENT THAT DOES NOT CONTAIN AN ORIGINAL SEAL AND SIGNATURE IS STRICTLY PROHIBITED. THIS DOCUMENT IS NOT PUBLISHED AND ALL RIGHTS ARE RESERVED BY HANOVER ENGINEERING ASSOCIATES, INC. THIS PLAN HAS BEEN SEALED WITH EITHER A RED INK SEAL OR A CRIMP SEAL. IF NEITHER APPEARS ON THIS PLAN, POSSIBLE REPRODUCTIONS OR ALTERATIONS MAY HAVE BEEN MADE WITHOUT THE APPROVAL OR KNOWLEDGE OF THE SIGNATORY.

**E&SPC LAYOUT PLAN**

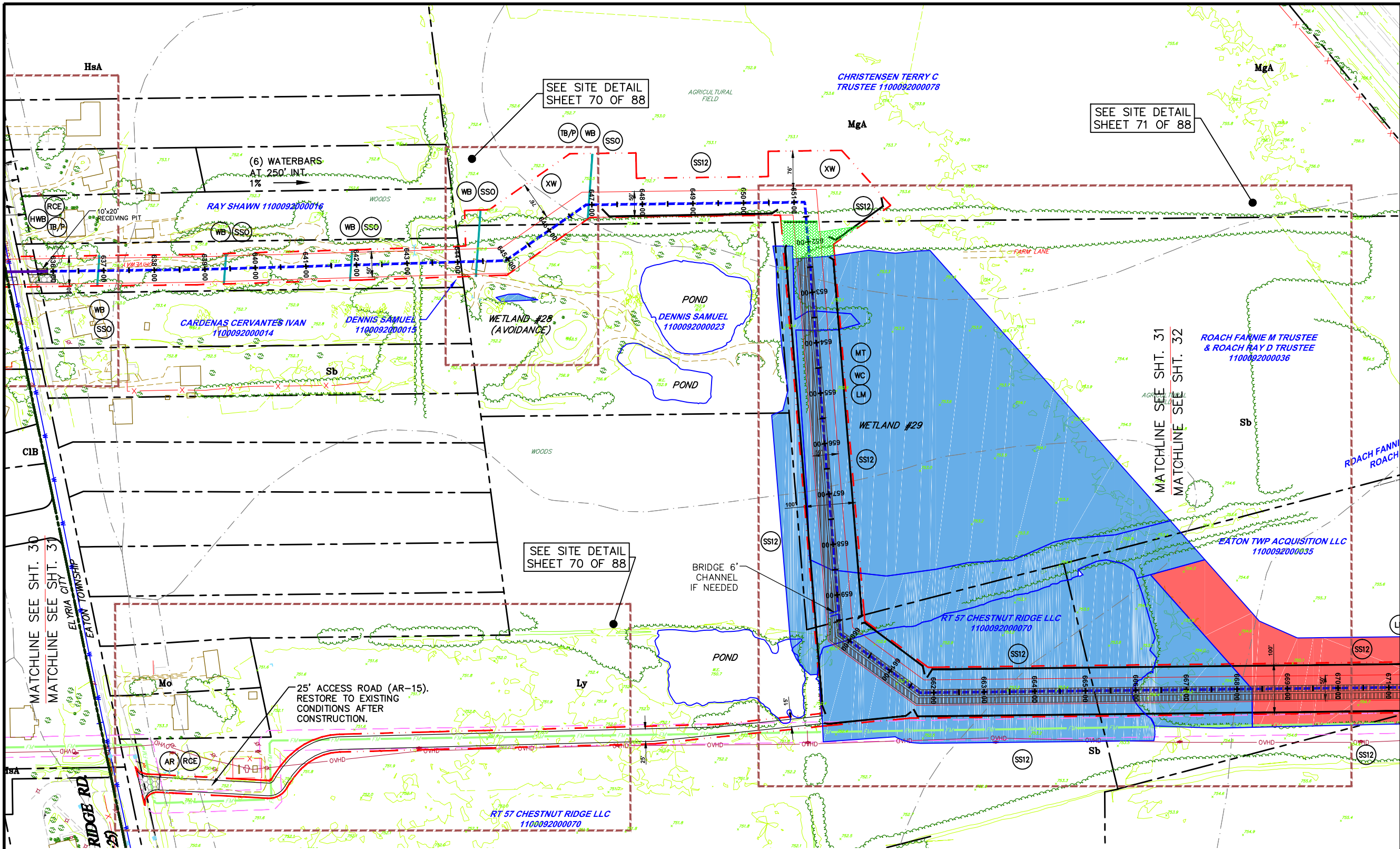
**AVON LAKE GAS ADDITION PROJECT**

CARLISLE, EATON & LAGRANGE TOWNSHIPS  
AVON, AVON LAKE, ELYRIA &  
NORTH RIDGEVILLE CITIES  
LORAIN COUNTY  
OHIO

**Hanover**  
Engineering Associates Inc

DRAWN BY: AEJ  
CHECKED BY: SJC  
DATE: 12.15.14  
SCALE: 1"=100'  
PROJECT NO. NRG-1007  
SHEET NO. 30 OF 88  
3355 Route 611, Suite 1  
Bartonsville, PA 18321-7822  
570.688.9550  
Fax 570.688.9768

Y:\Projects\Energy\NRG-1007-Avon Lakes Pipeline\DWG\ESPC-ESPC-1007-Avon Lakes Pipeline-LAYOUT PLANS-002.dwg Dec 14, 2014 4:41pm



**LEGEND**

INDEX CONTOUR

CONTOUR

PROPERTY LINE

TEMP. CONSTRUCTION EASEMENT/LIMIT OF DISTURBANCE

PERMANENT PIPELINE R.O.W.

CENTERLINE PIPELINE R.O.W.

ABOVE GROUND PIPE

CONVENTIONAL BORE

HDD

FENCE

EDGE WOODS

WETLANDS

STONE WALL

OVERHEAD/UTILITY POLE

PERENNIAL STREAM

EPHEMERAL/INTERMITTENT STREAM

ORD. HIGH WATER MARK

FLOODWAY

SOIL TYPE & BOUNDARY

SILT/SOX OR EQUIV. 12" HEIGHT

SILT/SOX OR EQUIV. 24" HEIGHT

SILT/SOX OR EQUIV. 32" HEIGHT

ROCK CONSTRUCTION ENTRANCE

LOG MAT

EROSION CONTROL MATTING

STREAMBANK RESTORATION

TEMP. PIPE

WATERBAR

ROCK FILTER BERM

BRIDGE

WETLAND CROSSING

SEDIMENT SILT SOXX PROTECTION AT WATER BAR

ACCESS ROAD

HIGHWAY BORING

HIGHWAY CUT

ACCESS RD. X-ING (PAVED ROAD)

ACCESS RD. w/CULVERT

UTILITY LINE STREAM X-ING WITH DAM AND PUMPING OR WITH PIPE FLUME

TRENCH BREAKER/PLUG

LONGITUDINAL DIVERSION GRADING

EXTRA WORKSPACE

LIMIT OF CONSTRUCTION AND LIMIT OF DISTURBANCE - 235 AC.

PEN/PSS

PFD

WETLANDS

STONE WALL

OVERHEAD/UTILITY POLE

PERENNIAL STREAM

EPHEMERAL/INTERMITTENT STREAM

ORD. HIGH WATER MARK

FLOODWAY

SOIL TYPE & BOUNDARY

SILT/SOX OR EQUIV. 12" HEIGHT

SILT/SOX OR EQUIV. 24" HEIGHT

SILT/SOX OR EQUIV. 32" HEIGHT

ROCK CONSTRUCTION ENTRANCE

LOG MAT

EROSION CONTROL MATTING

STREAMBANK RESTORATION

TEMP. PIPE

WATERBAR

ROCK FILTER BERM

BRIDGE

WETLAND CROSSING

SEDIMENT SILT SOXX PROTECTION AT WATER BAR

ACCESS ROAD

HIGHWAY BORING

HIGHWAY CUT

ACCESS RD. X-ING (PAVED ROAD)

ACCESS RD. w/CULVERT

UTILITY LINE STREAM X-ING WITH DAM AND PUMPING OR WITH PIPE FLUME

TRENCH BREAKER/PLUG

LONGITUDINAL DIVERSION GRADING

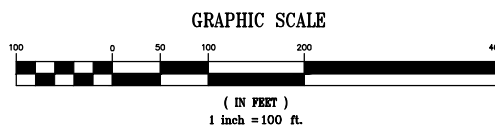
EXTRA WORKSPACE

LIMIT OF CONSTRUCTION AND LIMIT OF DISTURBANCE - 235 AC.

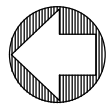
**NOTES:**

1. FLOW LENGTH SHOULD BE VERIFIED PRIOR TO CONSTRUCTION. IF FLOW LENGTH EXCEEDS SILT SOCKS LIMITS, SILT SOCKS OF APPROPRIATE SIZE SHALL BE USED.
2. SHALLOW EXCAVATIONS SHOULD NOT CREATE ANY ISSUES FOR GEOLOGICAL FORMATIONS.
3. THE ENTIRE PROJECT AREA WILL BE RESTORED TO EXISTING CONDITIONS OR MEADOW CONDITIONS, UNLESS IT IS CURRENTLY USED AS AN AGRICULTURAL USE. THE THICK VEGETATIVE COVER WILL HELP MINIMIZE THERMAL IMPACTS. THE PIPELINE R.O.W. WILL BE RESTORED TO ORIGINAL GRADE, WHICH WILL PROMOTE SHEET FLOW WHERE IT CURRENTLY OCCURS, ACROSS A VEGETATED AREA, ACTING AS A FILTER STRIP.
4. SILT SOCK OR CONSTRUCTION FENCE SHALL BE INSTALLED ON BOTH SIDES OF WORKSPACE.

ALL BMP'S SHOULD BE INSPECTED AFTER EACH RUNOFF EVENT EXCEEDING 0.5" IN DEPTH AND ON A WEEKLY BASIS. ANY NECESSARY REPAIRS MUST BE MADE IMMEDIATELY TO ENSURE EFFECTIVE AND EFFICIENT OPERATION.



THIS DOCUMENT IS THE PROPERTY OF HANOVER ENGINEERING ASSOCIATES, INC. ANY USE OF A COPY OF THIS DOCUMENT THAT DOES NOT CONTAIN AN ORIGINAL SEAL AND SIGNATURE IS STRICTLY PROHIBITED. THIS DOCUMENT IS NOT PUBLISHED AND ALL RIGHTS ARE RESERVED BY HANOVER ENGINEERING ASSOCIATES, INC. THIS PLAN HAS BEEN SEALED WITH EITHER A RED INK SEAL OR A CRIMP SEAL. IF NEITHER APPEARS ON THIS PLAN, POSSIBLE REPRODUCTIONS OR ALTERATIONS MAY HAVE BEEN MADE WITHOUT THE APPROVAL OR KNOWLEDGE OF THE SIGNATORY.



**E&SPC LAYOUT PLAN**

**AVON LAKE GAS ADDITION PROJECT**

CARLISLE, EATON & LAGRANGE TOWNSHIPS  
AVON, AVON LAKE, ELYRIA &  
NORTH RIDGEVILLE CITIES  
LORAIN COUNTY  
OHIO

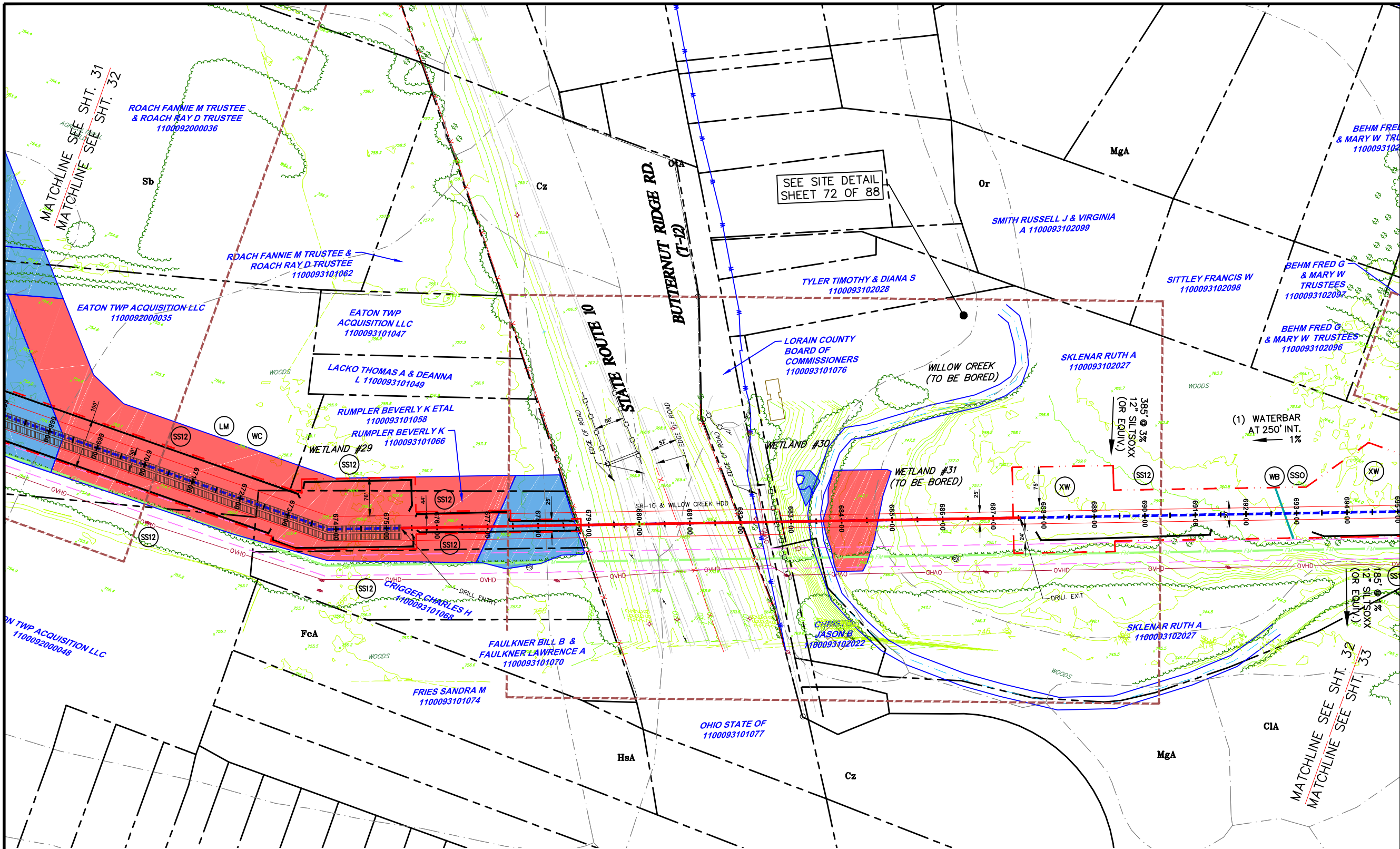
**Hanover**  
Engineering Associates Inc

DRAWN BY: AEJ  
CHECKED BY: SJC  
DATE: 12.15.14  
SCALE: 1"=100'  
PROJECT NO.: NRG-1007  
SHEET NO.: 31 OF 88

3355 Route 611, Suite 1  
Bartonsville, PA 18321-7822  
570.688.9550  
Fax 570.688.9768



Y:\Projects\Energy\NRG Energy\NRG-1007-Avon Lakes Pipeline\DWG\ESPC\ ESPC-NRG-1007-Avon LAKE-005-LAYOUT PLANS-002.dwg Dec 14, 2014 - 4:41pm



**LEGEND**

INDEX CONTOUR

CONTOUR

PROPERTY LINE

TEMP. CONSTRUCTION EASEMENT/LIMIT OF DISTURBANCE

PERMANENT PIPELINE R.O.W.

CENTERLINE PIPELINE R.O.W.

ABOVE GROUND PIPE

CONVENTIONAL BORE

HDD

FENCE

EDGE WOODS

WETLANDS

STONE WALL

OVERHEAD/UTILITY POLE

PERENNIAL STREAM

EPHEMERAL/INTERMITTENT STREAM

ORD. HIGH WATER MARK

FLOODWAY

SOIL TYPE & BOUNDARY

SILT SOCK OR EQUIV. 12" HEIGHT

SILT SOCK OR EQUIV. 24" HEIGHT

SILT SOCK OR EQUIV. 32" HEIGHT

ROCK CONSTRUCTION ENTRANCE

LOG MAT

EROSION CONTROL MATTING

STREAMBANK RESTORATION

TEMP. PIPE

WATERBAR

ROCK FILTER BERM

BRIDGE

WETLAND CROSSING

SEDIMENT SILT SOCK PROTECTION AT WATER BAR

ACCESS ROAD

HIGHWAY BORING

HIGHWAY CUT

ACCESS RD. X-ING (PAVED ROAD)

ACCESS RD. w/CULVERT

UTILITY LINE STREAM X-ING WITH DAM AND PUMPING OR WITH PIPE FLUME

TRENCH BREAKER/PLUG

LONGITUDINAL DIVERSION GRADING

EXTRA WORKSPACE

LIMIT OF CONSTRUCTION AND LIMIT OF DISTURBANCE - 235 AC.

PEM/PSS

PFO

WETLANDS

STONE WALL

OVERHEAD/UTILITY POLE

PERENNIAL STREAM

EPHEMERAL/INTERMITTENT STREAM

ORD. HIGH WATER MARK

FLOODWAY

SOIL TYPE & BOUNDARY

SILT SOCK OR EQUIV. 12" HEIGHT

SILT SOCK OR EQUIV. 24" HEIGHT

SILT SOCK OR EQUIV. 32" HEIGHT

ROCK CONSTRUCTION ENTRANCE

LOG MAT

EROSION CONTROL MATTING

STREAMBANK RESTORATION

TEMP. PIPE

WATERBAR

ROCK FILTER BERM

BRIDGE

WETLAND CROSSING

SEDIMENT SILT SOCK PROTECTION AT WATER BAR

ACCESS ROAD

HIGHWAY BORING

HIGHWAY CUT

ACCESS RD. X-ING (PAVED ROAD)

ACCESS RD. w/CULVERT

UTILITY LINE STREAM X-ING WITH DAM AND PUMPING OR WITH PIPE FLUME

TRENCH BREAKER/PLUG

LONGITUDINAL DIVERSION GRADING

EXTRA WORKSPACE

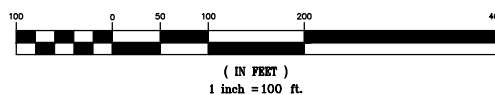
LIMIT OF CONSTRUCTION AND LIMIT OF DISTURBANCE - 235 AC.

**NOTES:**

1. FLOW LENGTH SHOULD BE VERIFIED PRIOR TO CONSTRUCTION. IF FLOW LENGTH EXCEEDS SILT SOCKS LIMITS, SILT SOCKS OF APPROPRIATE SIZE SHALL BE USED.
2. SHALLOW EXCAVATIONS SHOULD NOT CREATE ANY ISSUES FOR GEOLOGICAL FORMATIONS.
3. THE ENTIRE PROJECT AREA WILL BE RESTORED TO EXISTING CONDITIONS OR MEADOW CONDITIONS, UNLESS IT IS CURRENTLY USED AS AN AGRICULTURAL USE. THE THICK, VEGETATIVE COVER WILL HELP MINIMIZE THERMAL IMPACTS. THE PIPELINE R.O.W. WILL BE RESTORED TO ORIGINAL GRADE, WHICH WILL PROMOTE SHEET FLOW WHERE IT CURRENTLY OCCURS, ACROSS A VEGETATED AREA, ACTING AS A FILTER STRIP.
4. SILT SOCK OR CONSTRUCTION FENCE SHALL BE INSTALLED ON BOTH SIDES OF WORKSPACE.

ALL BMP'S SHOULD BE INSPECTED AFTER EACH RUNOFF EVENT EXCEEDING 0.5" IN DEPTH AND ON A WEEKLY BASIS. ANY NECESSARY REPAIRS MUST BE MADE IMMEDIATELY TO ENSURE EFFECTIVE AND EFFICIENT OPERATION.

**GRAPHIC SCALE**



THIS DOCUMENT IS THE PROPERTY OF HANOVER ENGINEERING ASSOCIATES, INC. ANY USE OF A COPY OF THIS DOCUMENT THAT DOES NOT CONTAIN AN ORIGINAL SEAL AND SIGNATURE IS STRICTLY PROHIBITED. THIS DOCUMENT IS NOT PUBLISHED AND ALL RIGHTS ARE RESERVED BY HANOVER ENGINEERING ASSOCIATES, INC. THIS PLAN HAS BEEN SEALED WITH EITHER A RED INK SEAL OR A CRIMP SEAL. IF NEITHER APPEARS ON THIS PLAN, POSSIBLE REPRODUCTIONS OR ALTERATIONS MAY HAVE BEEN MADE WITHOUT THE APPROVAL OR KNOWLEDGE OF THE SIGNATORY.

**E&SPC LAYOUT PLAN**

**AVON LAKE GAS ADDITION PROJECT**

CARLISLE, EATON & LAGRANGE TOWNSHIPS  
AVON, AVON LAKE, ELYRIA &  
NORTH RIDGEVILLE CITIES  
LORAIN COUNTY  
OHIO

**Hanover**  
Engineering Associates Inc

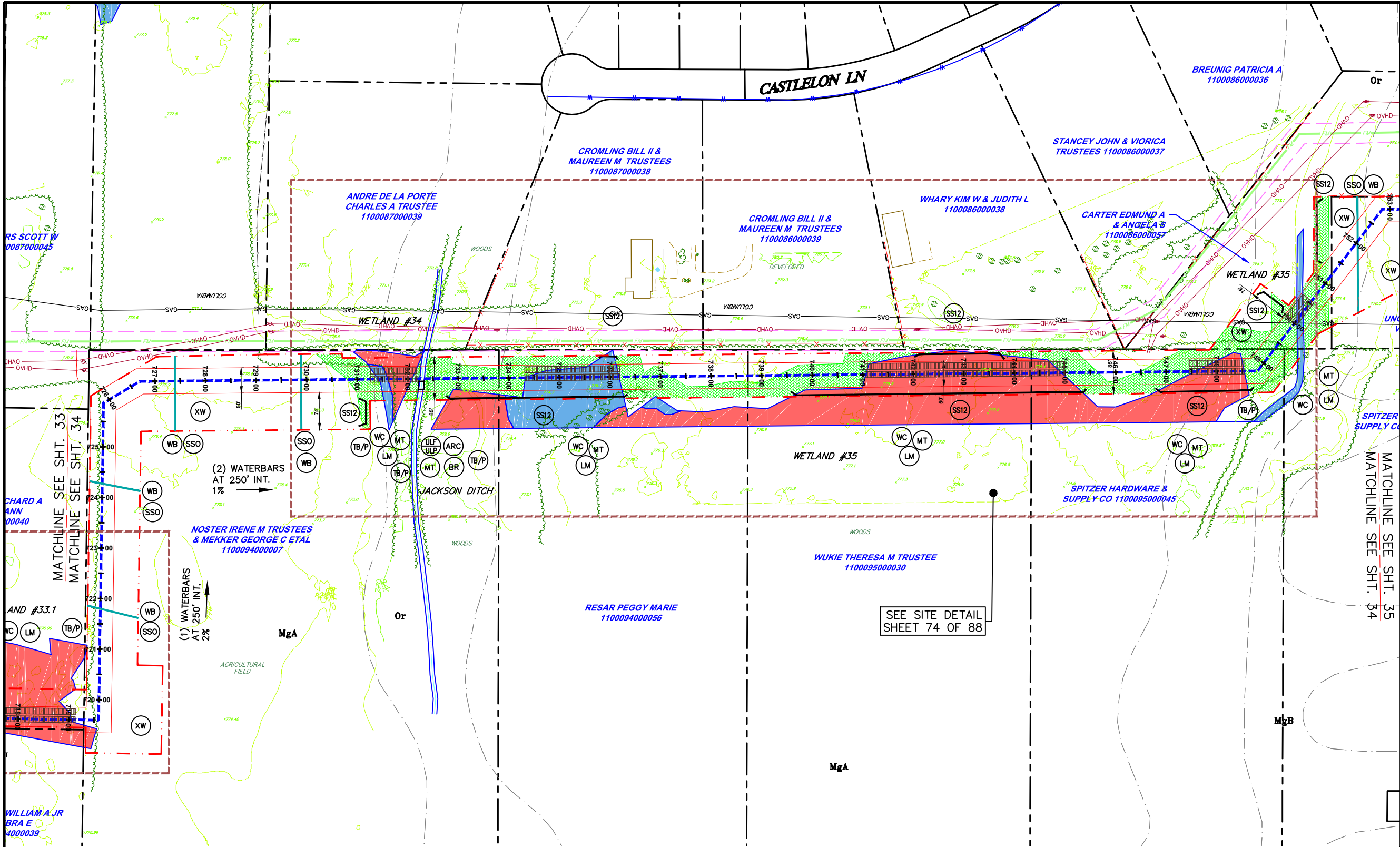
DRAWN BY: AEJ  
CHECKED BY: SJC  
DATE: 12.15.14  
SCALE: 1"=100'  
PROJECT NO. NRG-1007  
SHEET NO. 32 OF 88

3355 Route 611, Suite 1  
Bartonsville, PA 18321-7822  
570.688.9550  
Fax 570.688.9768





Y:\Projects\Energy\NRG Energy\NRG-1007-Avon Lakes Pipeline\DWG\ESPC\ESPC-NRG-1007-Avon LAKE-005-LAYOUT PLANS-002.dwg Dec 14, 2014 - 4:43pm



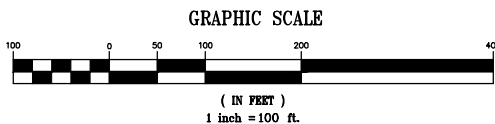
**LEGEND**

- INDEX CONTOUR
- CONTOUR
- PROPERTY LINE
- TEMP. CONSTRUCTION EASEMENT/LIMIT OF DISTURBANCE
- PERMANENT PIPELINE R.O.W.
- CENTERLINE PIPELINE R.O.W.
- ABOVE GROUND PIPE
- CONVENTIONAL BORE
- HDD
- FENCE
- EDGE WOODS
- WETLANDS
- STONE WALL
- OVERHEAD/UTILITY POLE
- PERENNIAL STREAM
- EPHEMERAL/INTERMITTENT STREAM
- ORD. HIGH WATER MARK LINE
- FLOODWAY
- SOIL TYPE & BOUNDARY
- SILT SOCK OR EQUIV. 12" HEIGHT
- SILT SOCK OR EQUIV. 24" HEIGHT
- SILT SOCK OR EQUIV. 32" HEIGHT
- ROCK CONSTRUCTION ENTRANCE
- LOG MAT
- EROSION CONTROL MATTING
- STREAMBANK RESTORATION
- TEMP. PIPE
- WATERBAR
- ROCK FILTER BERM
- BRIDGE
- WETLAND CROSSING
- SEDIMENT SILT SOCK PROTECTION AT WATER BAR
- ACCESS ROAD
- HIGHWAY BORING
- HIGHWAY CUT
- ACCESS RD. X-ING (PAVED ROAD)
- ACCESS RD. w/CULVERT
- UTILITY LINE STREAM X-ING WITH DAM AND PUMPING OR WITH PIPE FLUME
- TRENCH BREAKER/PLUG
- LONGITUDINAL DIVERSION GRADING
- EXTRA WORKSPACE
- LIMIT OF CONSTRUCTION AND LIMIT OF DISTURBANCE - 235 AC.

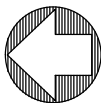
**NOTES:**

1. FLOW LENGTH SHOULD BE VERIFIED PRIOR TO CONSTRUCTION. IF FLOW LENGTH EXCEEDS SILT SOCKS LIMITS, SILT SOCKS OF APPROPRIATE SIZE SHALL BE USED.
2. SHALLOW EXCAVATIONS SHOULD NOT CREATE ANY ISSUES FOR GEOLOGICAL FORMATIONS.
3. THE ENTIRE PROJECT AREA WILL BE RESTORED TO EXISTING CONDITIONS OR MEADOW CONDITIONS, UNLESS IT IS CURRENTLY USED AS AN AGRICULTURAL USE. THE THICK, VEGETATIVE COVER WILL HELP MINIMIZE THERMAL IMPACTS. THE PIPELINE R.O.W. WILL BE RESTORED TO ORIGINAL GRADE, WHICH WILL PROMOTE SHEET FLOW WHERE IT CURRENTLY OCCURS, ACROSS A VEGETATED AREA, ACTING AS A FILTER STRIP.
4. SILT SOCK OR CONSTRUCTION FENCE SHALL BE INSTALLED ON BOTH SIDES OF WORKSPACE.

ALL BMP'S SHOULD BE INSPECTED AFTER EACH RUNOFF EVENT EXCEEDING 0.5" IN DEPTH AND ON A WEEKLY BASIS. ANY NECESSARY REPAIRS MUST BE MADE IMMEDIATELY TO ENSURE EFFECTIVE AND EFFICIENT OPERATION.



THIS DOCUMENT IS THE PROPERTY OF HANOVER ENGINEERING ASSOCIATES, INC. ANY USE OF A COPY OF THIS DOCUMENT THAT DOES NOT CONTAIN AN ORIGINAL SEAL AND SIGNATURE IS STRICTLY PROHIBITED. THIS DOCUMENT IS NOT PUBLISHED AND ALL RIGHTS ARE RESERVED BY HANOVER ENGINEERING ASSOCIATES, INC. THIS PLAN HAS BEEN SEALED WITH EITHER A RED INK SEAL OR A CRIMP SEAL. IF NEITHER APPEARS ON THIS PLAN, POSSIBLE REPRODUCTIONS OR ALTERATIONS MAY HAVE BEEN MADE WITHOUT THE APPROVAL OR KNOWLEDGE OF THE SIGNATORY.



**E&SPC LAYOUT PLAN**

**AVON LAKE GAS ADDITION PROJECT**

CARLISLE, EATON & LAGRANGE TOWNSHIPS  
AVON, AVON LAKE, ELYRIA &  
NORTH RIDGEVILLE CITIES  
LORAIN COUNTY  
OHIO

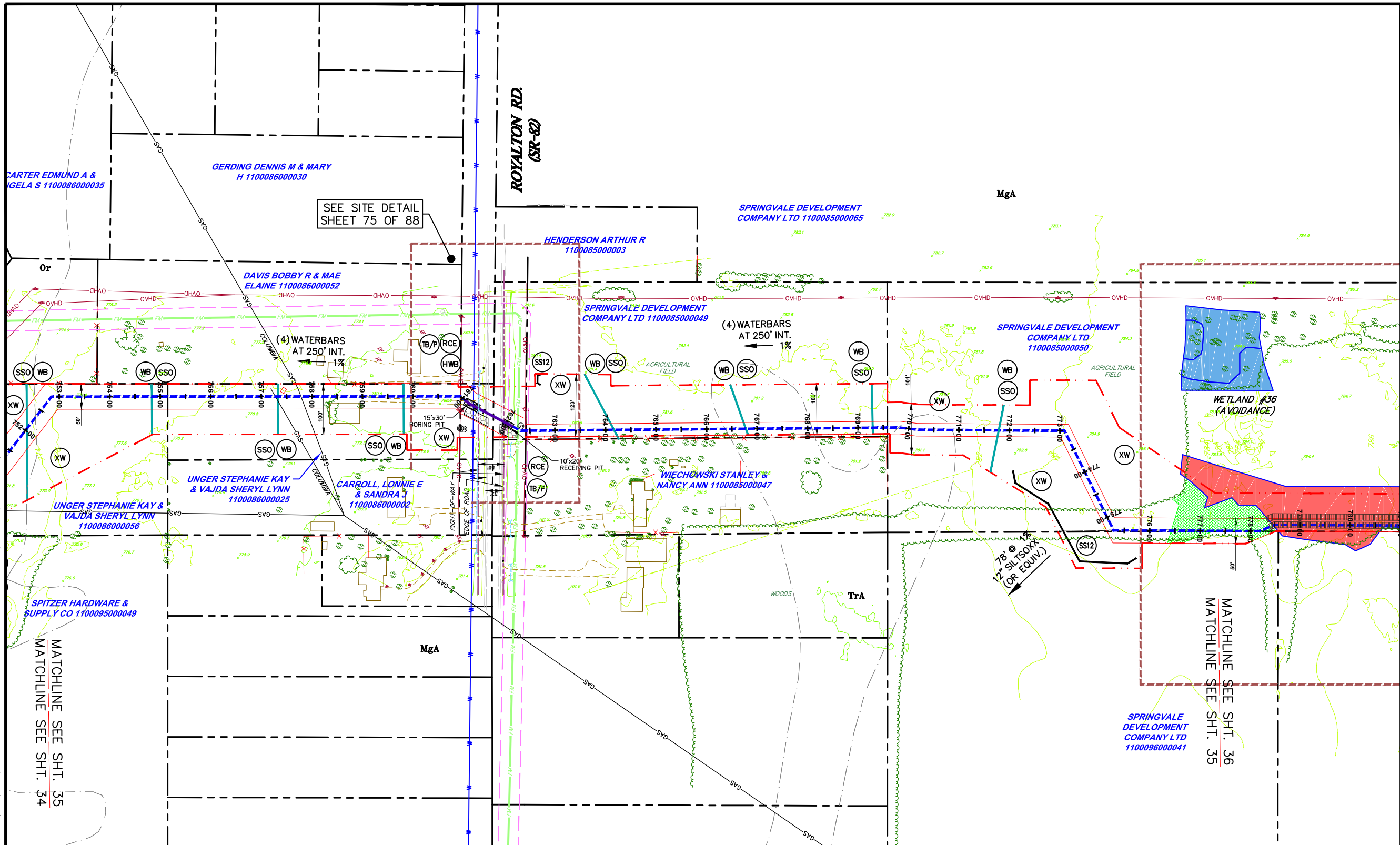
**Hanover**  
Engineering Associates Inc

DRAWN BY: AEJ  
CHECKED BY: SJC  
DATE: 12.15.14  
SCALE: 1"=100'  
PROJECT NO. NRG-1007  
SHEET NO. 34 OF 88

3355 Route 611, Suite 1  
Bartonsville, PA 18321-7822  
570.688.9550  
Fax 570.688.9768



Y:\Projects\Energy\NRG Energy\NRG-1007-Avon Lakes Pipeline\DWG\ESPC\ ESPC-NRG-1007-Avon Lake-005-LAYOUT PLANS-002.dwg Dec 14, 2014 - 4:43pm

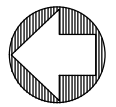
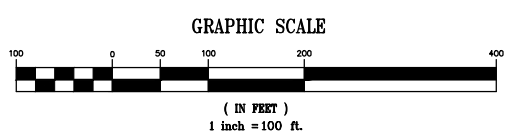


**LEGEND**

- INDEX CONTOUR
- CONTOUR
- PROPERTY LINE
- TEMP. CONSTRUCTION EASEMENT/LIMIT OF DISTURBANCE
- PERMANENT PIPELINE R.O.W.
- CENTERLINE PIPELINE R.O.W.
- ABOVE GROUND PIPE
- CONVENTIONAL BORE
- HDD
- FENCE
- EDGE WOODS
- WETLANDS
- STONE WALL
- OVERHEAD/UTILITY POLE
- PERENNIAL STREAM
- EPHEMERAL/INTERMITTENT STREAM
- ORD. HIGH WATER MARK LINE
- FLOODWAY
- SOIL TYPE & BOUNDARY
- SILT SOCK OR EQUIV. 12" HEIGHT
- SILT SOCK OR EQUIV. 24" HEIGHT
- SILT SOCK OR EQUIV. 32" HEIGHT
- ROCK CONSTRUCTION ENTRANCE
- LOG MAT
- EROSION CONTROL MATTING
- STREAMBANK RESTORATION
- TEMP. PIPE
- WATERBAR
- ROCK FILTER BERM
- BRIDGE
- WETLAND CROSSING
- SEDIMENT SILT SOCK PROTECTION AT WATER BAR
- ACCESS ROAD
- HIGHWAY BORING
- HIGHWAY CUT
- ACCESS RD. X-ING (PAVED ROAD)
- ACCESS RD. w/CULVERT
- UTILITY LINE STREAM X-ING WITH DAM AND PUMPING OR WITH PIPE FLUME
- TRENCH BREAKER/PLUG
- LONGITUDINAL DIVERSION GRADING
- EXTRA WORKSPACE
- LIMIT OF CONSTRUCTION AND LIMIT OF DISTURBANCE - 235 AC.

- NOTES:**
1. FLOW LENGTH SHOULD BE VERIFIED PRIOR TO CONSTRUCTION. IF FLOW LENGTH EXCEEDS SILT SOCKS LIMITS, SILT SOCKS OF APPROPRIATE SIZE SHALL BE USED.
  2. SHALLOW EXCAVATIONS SHOULD NOT CREATE ANY ISSUES FOR GEOLOGICAL FORMATIONS.
  3. THE ENTIRE PROJECT AREA WILL BE RESTORED TO EXISTING CONDITIONS OR MEADOW CONDITIONS, UNLESS IT IS CURRENTLY USED AS AN AGRICULTURAL USE. THE THICK, VEGETATIVE COVER WILL HELP MINIMIZE THERMAL IMPACTS. THE PIPELINE R.O.W. WILL BE RESTORED TO ORIGINAL GRADE, WHICH WILL PROMOTE SHEET FLOW WHERE IT CURRENTLY OCCURS, ACROSS A VEGETATED AREA, ACTING AS A FILTER STRIP.
  4. SILT SOCK OR CONSTRUCTION FENCE SHALL BE INSTALLED ON BOTH SIDES OF WORKSPACE.

ALL BMP'S SHOULD BE INSPECTED AFTER EACH RUNOFF EVENT EXCEEDING 0.5" IN DEPTH AND ON A WEEKLY BASIS. ANY NECESSARY REPAIRS MUST BE MADE IMMEDIATELY TO ENSURE EFFECTIVE AND EFFICIENT OPERATION.



THIS DOCUMENT IS THE PROPERTY OF HANOVER ENGINEERING ASSOCIATES, INC. ANY USE OF A COPY OF THIS DOCUMENT THAT DOES NOT CONTAIN AN ORIGINAL SEAL AND SIGNATURE IS STRICTLY PROHIBITED. THIS DOCUMENT IS NOT PUBLISHED AND ALL RIGHTS ARE RESERVED BY HANOVER ENGINEERING ASSOCIATES, INC. THIS PLAN HAS BEEN SEALED WITH EITHER A RED INK SEAL OR A CRIMP SEAL. IF NEITHER APPEARS ON THIS PLAN, POSSIBLE REPRODUCTIONS OR ALTERATIONS MAY HAVE BEEN MADE WITHOUT THE APPROVAL OR KNOWLEDGE OF THE SIGNATORY.

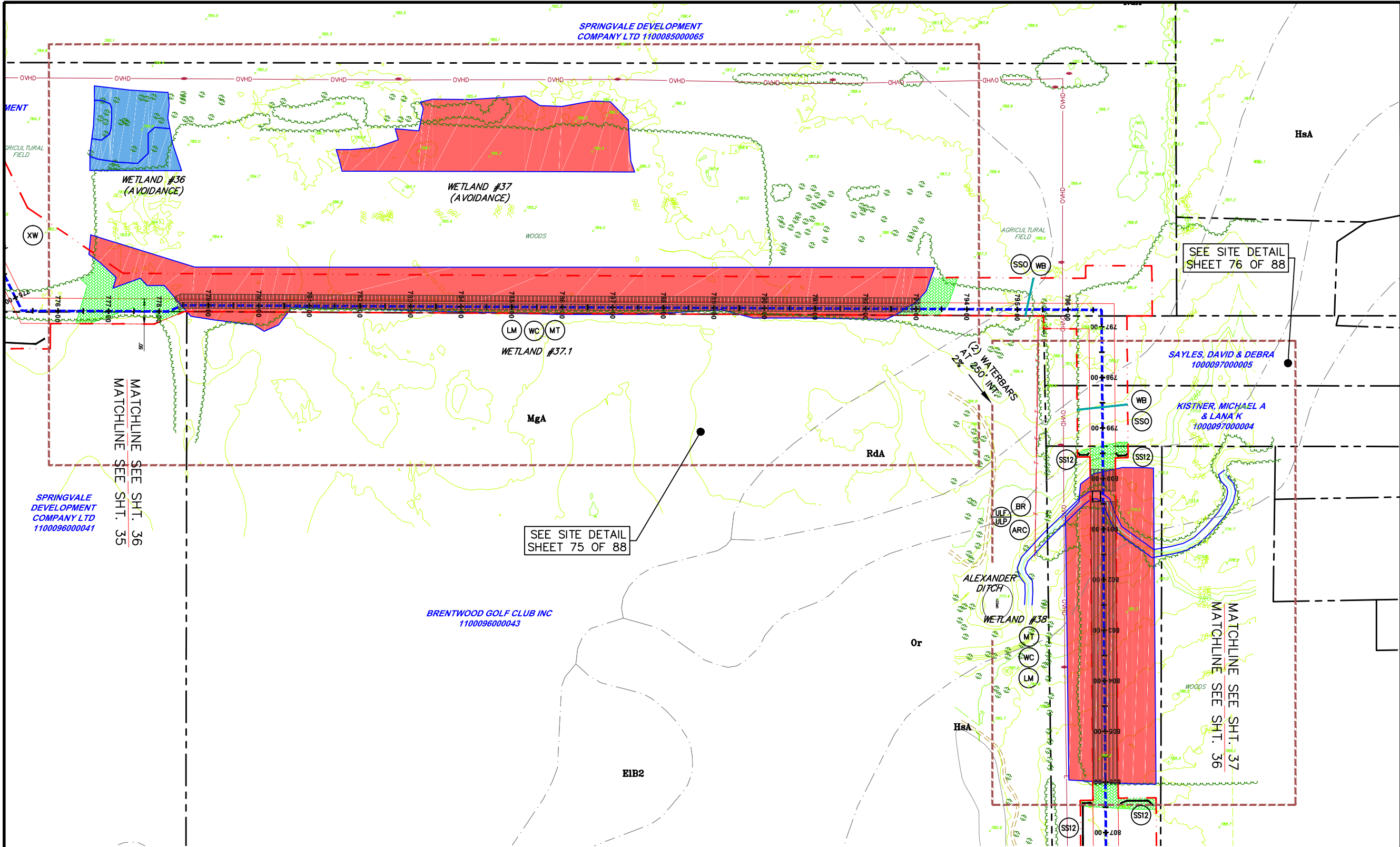
SEAL

**E&SPC LAYOUT PLAN**

SFAI	NO.	REVISIONS	DATE	AVON LAKE GAS ADDITION PROJECT			
				CARLISLE, EATON & LAGRANGE TOWNSHIPS AVON, AVON LAKE, ELYRIA & NORTH RIDGEVILLE CITIES LORAIN COUNTY OHIO	DRAWN BY: AEJ	PROJECT NO.	
					CHECKED BY: SJC	NRG-1007	
					DATE: 12.15.14	SHEET NO.	
					SCALE: 1"=100'	35 of 88	
				<b>Hanover</b> Engineering Associates Inc	3355 Route 611, Suite 1 Bartonsville, PA 18321-7822 570.688.9550 Fax 570.688.9768		

**Hanover**  
Engineering Associates Inc

Y:\Projects\Energy\NRG Energy\NRG-1007-Avon Lakes Pipeline\DWG\ESPC\ ESPC-NRG-1007-AVON LAKE-005-LAYOUT PLANS-002.dwg Dec 14, 2014 -- 4:44pm



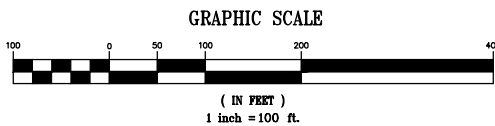
**LEGEND**

- INDEX CONTOUR
- CONTOUR
- PROPERTY LINE
- TEMP. CONSTRUCTION EASEMENT/LIMIT OF DISTURBANCE
- PERMANENT PIPELINE R.O.W.
- CENTERLINE PIPELINE R.O.W.
- ABOVE GROUND PIPE
- CONVENTIONAL BORE
- HDD
- FENCE
- EDGE WOODS
- WETLANDS
- STONE WALL
- OVERHEAD/UTILITY POLE
- PERENNIAL STREAM
- EPHEMERAL/INTERMITTENT STREAM
- ORD. HIGH WATER MARK LINE
- FLOODWAY
- SOIL TYPE & BOUNDARY
- SILT SOCK OR EQUIV. 12" HEIGHT
- SILT SOCK OR EQUIV. 24" HEIGHT
- SILT SOCK OR EQUIV. 32" HEIGHT
- ROCK CONSTRUCTION ENTRANCE
- LOG MAT
- EROSION CONTROL MATTING
- STREAMBANK RESTORATION
- TEMP. PIPE
- WATERBAR
- ROCK FILTER BERM
- BRIDGE
- WETLAND CROSSING
- SEDIMENT SILT SOCK PROTECTION AT WATER BAR
- ACCESS ROAD
- HIGHWAY BORING
- HIGHWAY CUT
- ACCESS RD. X-ING (PAVED ROAD)
- ACCESS RD. w/CULVERT
- UTILITY LINE STREAM X-ING WITH DAM AND PUMPING OR WITH PIPE FLUME
- TRENCH BREAKER/PLUG
- LONGITUDINAL DIVERSION GRADING
- EXTRA WORKSPACE
- LIMIT OF CONSTRUCTION AND LIMIT OF DISTURBANCE - 235 AC.

**NOTES:**

1. FLOW LENGTH SHOULD BE VERIFIED PRIOR TO CONSTRUCTION. IF FLOW LENGTH EXCEEDS SILT SOCKS LIMITS, SILT SOCKS OF APPROPRIATE SIZE SHALL BE USED.
2. SHALLOW EXCAVATIONS SHOULD NOT CREATE ANY ISSUES FOR GEOLOGICAL FORMATIONS.
3. THE ENTIRE PROJECT AREA WILL BE RESTORED TO EXISTING CONDITIONS OR MEADOW CONDITIONS, UNLESS IT IS CURRENTLY USED AS AN AGRICULTURAL USE. THE THICK, VEGETATIVE COVER WILL HELP MINIMIZE THERMAL IMPACTS. THE PIPELINE R.O.W. WILL BE RESTORED TO ORIGINAL GRADE, WHICH WILL PROMOTE SHEET FLOW WHERE IT CURRENTLY OCCURS, ACROSS A VEGETATED AREA, ACTING AS A FILTER STRIP.
4. SILT SOCK OR CONSTRUCTION FENCE SHALL BE INSTALLED ON BOTH SIDES OF WORKSPACE.

ALL BMP'S SHOULD BE INSPECTED AFTER EACH RUNOFF EVENT EXCEEDING 0.5" IN DEPTH AND ON A WEEKLY BASIS. ANY NECESSARY REPAIRS MUST BE MADE IMMEDIATELY TO ENSURE EFFECTIVE AND EFFICIENT OPERATION.



THIS DOCUMENT IS THE PROPERTY OF HANOVER ENGINEERING ASSOCIATES, INC. ANY USE OF A COPY OF THIS DOCUMENT THAT DOES NOT CONTAIN AN ORIGINAL SEAL AND SIGNATURE IS STRICTLY PROHIBITED. THIS DOCUMENT IS NOT PUBLISHED AND ALL RIGHTS ARE RESERVED BY HANOVER ENGINEERING ASSOCIATES, INC. THIS PLAN HAS BEEN SEALED WITH EITHER A RED INK SEAL OR A CRIMP SEAL. IF NEITHER APPEARS ON THIS PLAN, POSSIBLE REPRODUCTIONS OR ALTERATIONS MAY HAVE BEEN MADE WITHOUT THE APPROVAL OR KNOWLEDGE OF THE SIGNATORY.

**E&SPC LAYOUT PLAN**

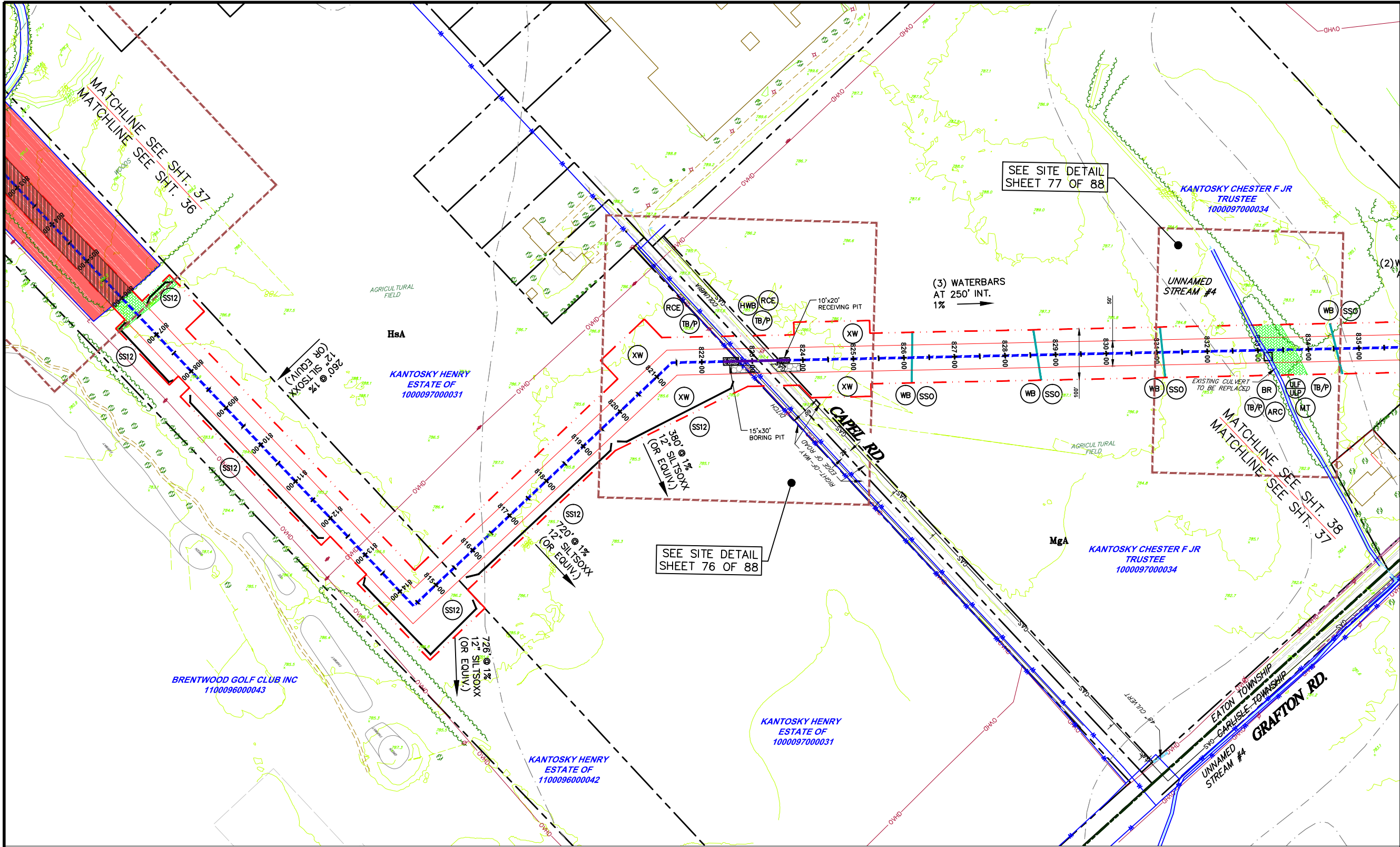
**AVON LAKE GAS ADDITION PROJECT**

CARLISLE, EATON & LAGRANGE TOWNSHIPS  
AVON, AVON LAKE, ELYRIA &  
NORTH RIDGEVILLE CITIES  
LORAIN COUNTY  
OHIO

**Hanover**  
Engineering Associates Inc

DRAWN BY: AEJ  
CHECKED BY: SJC  
DATE: 12.15.14  
SCALE: 1"=100'  
PROJECT NO. NRG-1007  
SHEET NO. 36 OF 88  
3355 Route 611, Suite 1  
Bartonsville, PA 18321-7822  
570.688.9550  
Fax 570.688.9768





**LEGEND**

INDEX CONTOUR

CONTOUR

PROPERTY LINE

TEMP. CONSTRUCTION EASEMENT/LIMIT OF DISTURBANCE

PERMANENT PIPELINE R.O.W.

CENTERLINE PIPELINE R.O.W.

ABOVE GROUND PIPE

CONVENTIONAL BORE

HDD

FENCE

EDGE WOODS

PEN/PSS

PFO

WETLANDS

STONE WALL

OVERHEAD/UTILITY POLE

FLOW

PERENNIAL STREAM

FLOW

EPHEMERAL/INTERMITTENT STREAM

ORD. HIGH WATER MARK

FLOODWAY

LoB

SOIL TYPE & BOUNDARY

SS12

SILT/SSX OR EQUIV. 12" HEIGHT

SS24

SILT/SSX OR EQUIV. 24" HEIGHT

SS32

SILT/SSX OR EQUIV. 32" HEIGHT

RCE

ROCK CONSTRUCTION ENTRANCE

LM

LOG MAT

MT

EROSION CONTROL MATTING

SBR

STREAMBANK RESTORATION

TP

TEMP. PIPE

WB

WATERBAR

RFB

ROCK FILTER BERM

BR

BRIDGE

WC

WETLAND CROSSING

SSO

SEDIMENT SILT SOXX PROTECTION AT WATER BAR

AR

ACCESS ROAD

HWB

HIGHWAY BORING

HWC

HIGHWAY CUT

APR

ACCESS RD. X-ING (PAVED ROAD)

ARC

ACCESS RD. w/CULVERT

ULP

UTILITY LINE STREAM X-ING WITH DAM & PUMPING OR WITH PIPE FLUME

TB/P

TRENCH BREAKER/PLUG

LDG

LONGITUDINAL DIVERSION GRADING

XW

EXTRA WORKSPACE

LIMIT OF CONSTRUCTION AND LIMIT OF DISTURBANCE - 235 AC.

NOTES:

1. FLOW LENGTH SHOULD BE VERIFIED PRIOR TO CONSTRUCTION. IF FLOW LENGTH EXCEEDS SILT SOCKS LIMITS, SILT SOCKS OF APPROPRIATE SIZE SHALL BE USED.
2. SHALLOW EXCAVATIONS SHOULD NOT CREATE ANY ISSUES FOR GEOLOGICAL FORMATIONS.
3. THE ENTIRE PROJECT AREA WILL BE RESTORED TO EXISTING CONDITIONS OR MEADOW CONDITIONS, UNLESS IT IS CURRENTLY USED AS AN AGRICULTURAL USE. THE THICK, VEGETATIVE COVER WILL HELP MINIMIZE THERMAL IMPACTS. THE PIPELINE R.O.W. WILL BE RESTORED TO ORIGINAL GRADE, WHICH WILL PROMOTE SHEET FLOW WHERE IT CURRENTLY OCCURS, ACROSS A VEGETATED AREA, ACTING AS A FILTER STRIP.
4. SILT SOCK OR CONSTRUCTION FENCE SHALL BE INSTALLED ON BOTH SIDES OF WORKSPACE.

GRAPHIC SCALE

THIS DOCUMENT IS THE PROPERTY OF HANOVER ENGINEERING ASSOCIATES, INC. ANY USE OF A COPY OF THIS DOCUMENT THAT DOES NOT CONTAIN AN ORIGINAL SEAL AND SIGNATURE IS STRICTLY PROHIBITED. THIS DOCUMENT IS NOT PUBLISHED AND ALL RIGHTS ARE RESERVED BY HANOVER ENGINEERING ASSOCIATES, INC. THIS PLAN HAS BEEN SEALED WITH EITHER A RED INK SEAL OR A CRIMP SEAL. IF NEITHER APPEARS ON THIS PLAN, POSSIBLE REPRODUCTIONS OR ALTERATIONS MAY HAVE BEEN MADE WITHOUT THE APPROVAL OR KNOWLEDGE OF THE SIGNATORY.

ALL BMP'S SHOULD BE INSPECTED AFTER EACH RUNOFF EVENT EXCEEDING 0.5" IN DEPTH AND ON A WEEKLY BASIS. ANY NECESSARY REPAIRS MUST BE MADE IMMEDIATELY TO ENSURE EFFECTIVE AND EFFICIENT OPERATION.

E&SPC LAYOUT PLAN

AVON LAKE GAS ADDITION PROJECT

CARLISLE, EATON & LAGRANGE TOWNSHIPS  
AVON, AVON LAKE, ELYRIA &  
NORTH RIDGEVILLE CITIES  
LORAIN COUNTY  
OHIO

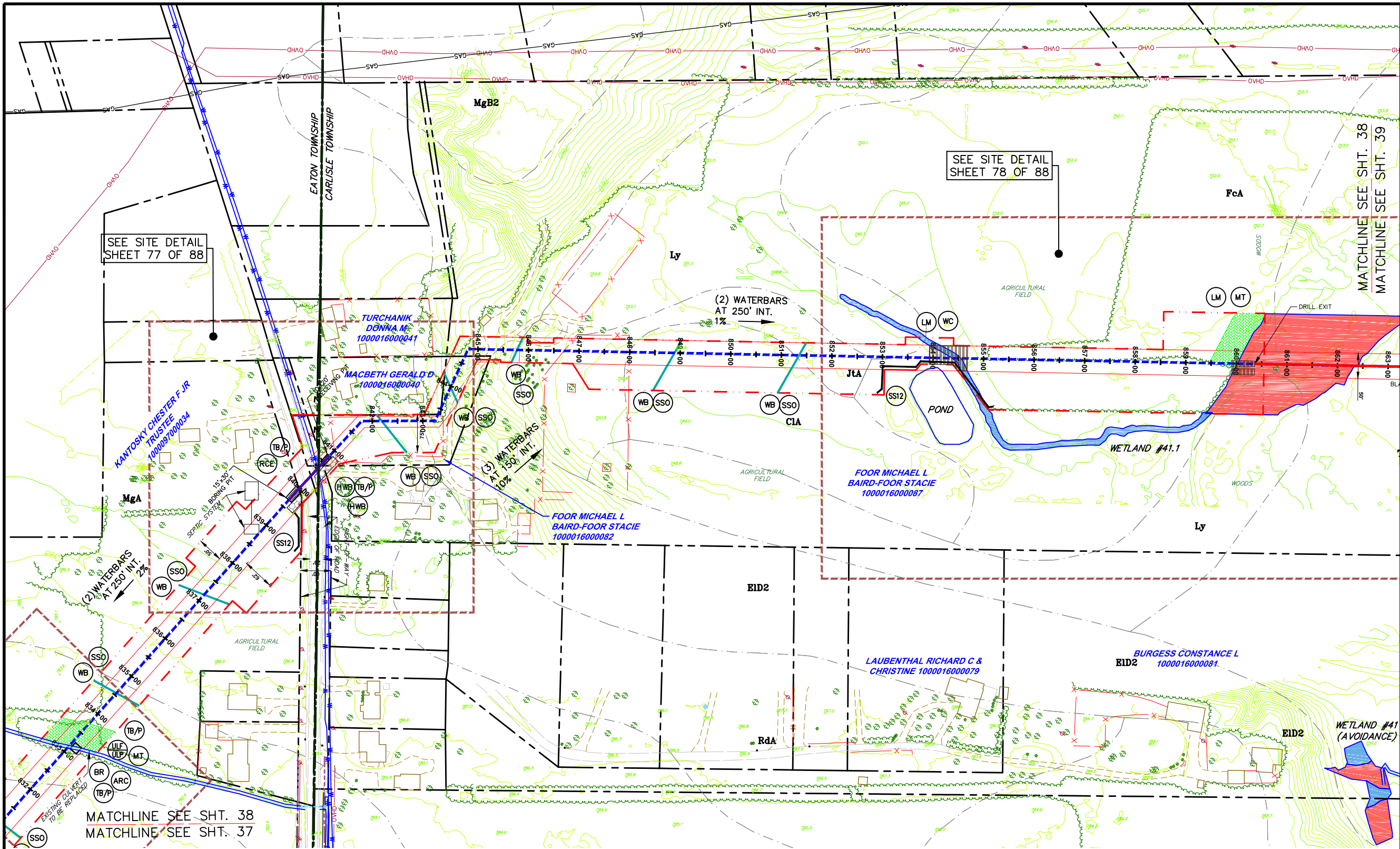
**Hanover**  
Engineering Associates Inc

DRAWN BY: AEJ  
CHECKED BY: SJC  
DATE: 12.15.14  
SCALE: 1"=100'  
PROJECT NO.: NRG-1007  
SHEET NO.: 37 OF 88

3355 Route 611, Suite 1  
Bartonsville, PA 18321-7822  
570.688.9550  
Fax 570.688.9768



Y:\Projects\Energy\NRG Energy\NRG-1007-Avon Lakes Pipeline\DWG\ESPC\ ESPC-NRG-1007-AVON LAKE-005-LAYOUT PLANS-002.dwg Dec 14, 2014 - 4:45pm

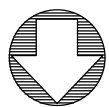
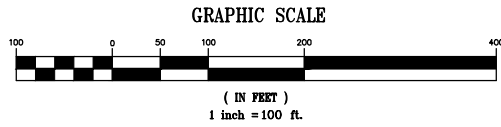


**LEGEND**

- INDEX CONTOUR
- CONTOUR
- PROPERTY LINE
- TEMP. CONSTRUCTION EASEMENT/LIMIT OF DISTURBANCE
- PERMANENT PIPELINE R.O.W.
- CENTERLINE PIPELINE R.O.W.
- ABOVE GROUND PIPE
- CONVENTIONAL BORE
- HDD
- FENCE
- EDGE WOODS
- WETLANDS
- STONE WALL
- OVERHEAD/UTILITY POLE
- PERENNIAL STREAM
- EPHEMERAL/INTERMITTENT STREAM
- ORD. HIGH WATER MARK LINE
- FLOODWAY
- SOIL TYPE & BOUNDARY
- SILT SOCK OR EQUIV. 12" HEIGHT
- SILT SOCK OR EQUIV. 24" HEIGHT
- SILT SOCK OR EQUIV. 32" HEIGHT
- ROCK CONSTRUCTION ENTRANCE
- LOG MAT
- EROSION CONTROL MATTING
- STREAMBANK RESTORATION
- TEMP. PIPE
- WATERBAR
- ROCK FILTER BERM
- BRIDGE
- WETLAND CROSSING
- SEDIMENT SILT SOCK PROTECTION AT WATER BAR
- ACCESS ROAD
- HIGHWAY BORING
- HIGHWAY CUT
- ACCESS RD. X-ING (PAVED ROAD)
- ACCESS RD. w/CULVERT
- UTILITY LINE STREAM X-ING WITH DAM AND PUMPING OR WITH PIPE FLUME
- TRENCH BREAKER/PLUG
- LONGITUDINAL DIVERSION GRADING
- EXTRA WORKSPACE
- LIMIT OF CONSTRUCTION AND LIMIT OF DISTURBANCE - 235 AC.

- NOTES:**
1. FLOW LENGTH SHOULD BE VERIFIED PRIOR TO CONSTRUCTION. IF FLOW LENGTH EXCEEDS SILT SOCKS LIMITS, SILT SOCKS OF APPROPRIATE SIZE SHALL BE USED.
  2. SHALLOW EXCAVATIONS SHOULD NOT CREATE ANY ISSUES FOR GEOLOGICAL FORMATIONS.
  3. THE ENTIRE PROJECT AREA WILL BE RESTORED TO EXISTING CONDITIONS OR MEADOW CONDITIONS, UNLESS IT IS CURRENTLY USED AS AN AGRICULTURAL USE. THE THICK VEGETATIVE COVER WILL HELP MINIMIZE THERMAL IMPACTS. THE PIPELINE R.O.W. WILL BE RESTORED TO ORIGINAL GRADE, WHICH WILL PROMOTE SHEET FLOW WHERE IT CURRENTLY OCCURS, ACROSS A VEGETATED AREA, ACTING AS A FILTER STOP.
  4. SILT SOCK OR CONSTRUCTION FENCE SHALL BE INSTALLED ON BOTH SIDES OF WORKSPACE.

ALL BMP'S SHOULD BE INSPECTED AFTER EACH RUNOFF EVENT EXCEEDING 0.5" IN DEPTH AND ON A WEEKLY BASIS. ANY NECESSARY REPAIRS MUST BE MADE IMMEDIATELY TO ENSURE EFFECTIVE AND EFFICIENT OPERATION.



THIS DOCUMENT IS THE PROPERTY OF HANOVER ENGINEERING ASSOCIATES, INC. ANY USE OF A COPY OF THIS DOCUMENT THAT DOES NOT CONTAIN AN ORIGINAL SEAL AND SIGNATURE IS STRICTLY PROHIBITED. THIS DOCUMENT IS NOT PUBLISHED AND ALL RIGHTS ARE RESERVED BY HANOVER ENGINEERING ASSOCIATES, INC. THIS PLAN HAS BEEN SEALED WITH EITHER A RED INK SEAL OR A CRIMP SEAL. IF NEITHER APPEARS ON THIS PLAN, POSSIBLE REPRODUCTIONS OR ALTERATIONS MAY HAVE BEEN MADE WITHOUT THE APPROVAL OR KNOWLEDGE OF THE SIGNATORY.

SEAL

**E&SPC LAYOUT PLAN**

SEAL	NO.	REVISIONS	DATE	AVON LAKE GAS ADDITION PROJECT				
				CARLISLE, EATON & LAGRANGE TOWNSHIPS AVON, AVON LAKE, ELYRIA & NORTH RIDGEVILLE CITIES LORAIN COUNTY OHIO		DRAWN BY: AEJ	PROJECT NO.	
						CHECKED BY: SJC	NRG-1007	
						DATE: 12.15.14		SHEET NO.
						SCALE: 1"=100'		38 OF 88
				<b>Hanover</b> Engineering Associates Inc		3355 Route 611, Suite 1 Bartonsville, PA 18321-7822 570.688.9550 Fax 570.688.9768		

**Hanover**  
Engineering Associates Inc



**This foregoing document was electronically filed with the Public Utilities**

**Commission of Ohio Docketing Information System on**

**12/19/2014 12:53:09 PM**

**in**

**Case No(s). 14-1717-GA-BLN**

Summary: Application of NRG Ohio Pipeline Company LLC continued - Attachment K (Part 4)  
electronically filed by Teresa Orahod on behalf of Sally Bloomfield