

Scioto Ridge Wind Farm
 Roundhead, McDonald, Taylor Creek and Lynn Townships - Hardin County, Ohio. Richland and Rushcreek Townships - Logan County, Ohio.

Figure 08-1: Ecological Features
 Index Sheet

December 2014

- Wind Turbine
- 0.5-Mile Radius
- Revised Sheet
- Sheet Index
- County Boundary

- Notes:**
1. The Collection Substation appears on Sheet 3 and is immediately adjacent to Sheet 4; therefore, only these two sheets have been updated.
 2. Map Scale: 1:75,000
 3. Base Map: ESRI StreetMap North America, 2012.



**Scioto Ridge
Wind Farm**
Roundhead, McDonald,
Taylor Creek and Lynn
Townships - Hardin County,
Ohio. Richland and
Rushcreek Townships -
Logan County, Ohio.

**Figure 08-1: Ecological
Features**
Sheet 3 of 6

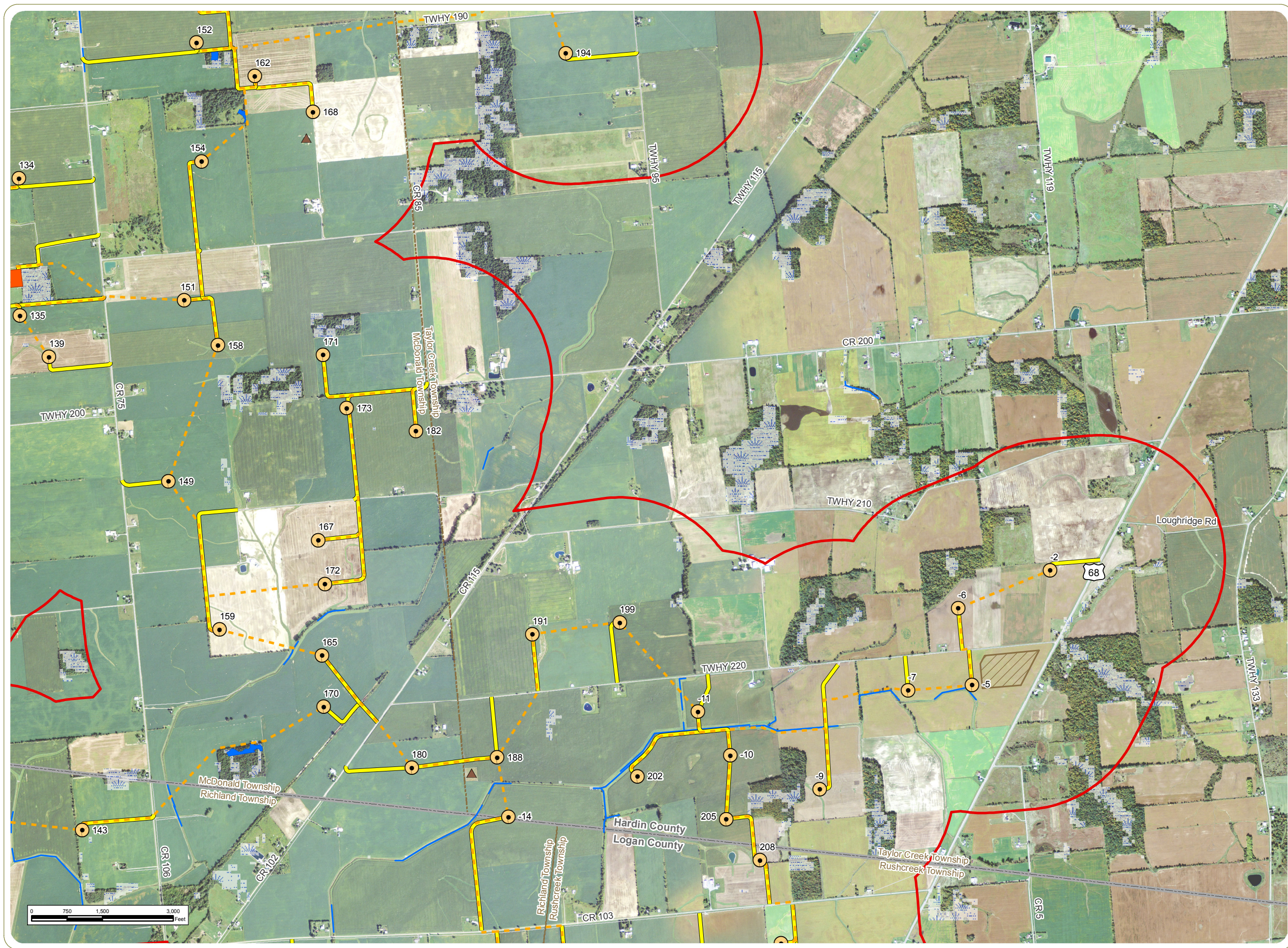
December 2014

- Wind Turbine
- Temporary Met Tower
- Collection Line
- Access Road
- Collector Substation
- Laydown Yard
- Delineated Stream/Wetland
- Ohio Wetland Inventory
- 100-Year Floodplain
- Golf Course
- Local Park
- State Nature Preserve
- State Park
- 0.5-Mile Radius
- Town Boundary
- County Boundary

Notes:
1. Base Map: NAIP 1-meter resolution
orthoimagery, 2011.
2. Delineated wetlands and streams
provided by Cardno ENTRIX. Facility
shapefiles provided by Applicant. Other
data obtained from public sources by edr.
3. Map Scale: 1:24,000

everpower





**Scioto Ridge
Wind Farm**
Roundhead, McDonald,
Taylor Creek and Lynn
Townships - Hardin County,
Ohio. Richland and
Rushcreek Townships -
Logan County, Ohio.

**Figure 08-1: Ecological
Features**
Sheet 4 of 6

December 2014

- Wind Turbine
- Temporary Met Tower
- Collection Line
- Access Road
- Collector Substation
- Laydown Yard
- Delineated Stream/Wetland
- Ohio Wetland Inventory
- 100-Year Floodplain
- Golf Course
- Local Park
- State Nature Preserve
- State Park
- 0.5-Mile Radius
- Town Boundary
- County Boundary

Notes:
1. Base Map: NAIP 1-meter resolution
orthoimagery, 2011.
2. Delineated wetlands and streams
provided by Cardno ENTRIX. Facility
shapefiles provided by Applicant. Other
data obtained from public sources by edr.
3. Map Scale: 1:24,000

everpower



www.edrdpc.com

This foregoing document was electronically filed with the Public Utilities

Commission of Ohio Docketing Information System on

12/12/2014 2:15:17 PM

in

Case No(s). 14-1557-EL-BGA

Summary: Notice Notice Regarding Minor Shift in Proposed Location of Collector Substation -
Figure 08-1 electronically filed by Mr. Michael J. Settineri on behalf of Hardin Wind LLC