

This map and all data contained within are supplied as is with no warranty. Cardno ENTRIX expressly disclaims responsibility for damages or liability from any claims that may arise out of the use or misuse of this map. It is the sole responsibility of the user to determine if the data on this map meets the user's needs. This map was not created as survey data, nor should it be used as such. It is the user's responsibility to obtain proper survey data, prepared by a licensed surveyor, where required by law.

Legend

- Permitted Turbine Location
- Proposed Turbine Location
- Proposed Access Road
- Proposed Underground Collection
- Permitted Access Road
- Permitted Underground Collection
- Proposed Substation
- Permitted Substation
- Proposed Additional Project Corridor
- Permitted Project Corridor
- Permitted Laydown Yards
- Project Boundary
- County Boundary
- Township Boundary
- City Boundary
- USGS NHD Streams
- Existing Railroad
- Fully Hydric Soils
- Inaccessible Properties
- Field Delineated Waterbodies
- Field Delineated Wetlands
- NWI Wetlands Outside Project Corridor
- Additional Potential Wetlands Areas Denoted by Ohio DNR

Scioto Ridge Wind Farm
Amended Figure 4 - Wetlands - Sheet 1 of 7

Hardin and Logan Counties, Ohio

Map Scale

0 1 2 3 4 5 6 7 8 9 10 Miles

0 1 2 3 4 5 6 7 8 9 10 Kilometers

Sheet Index

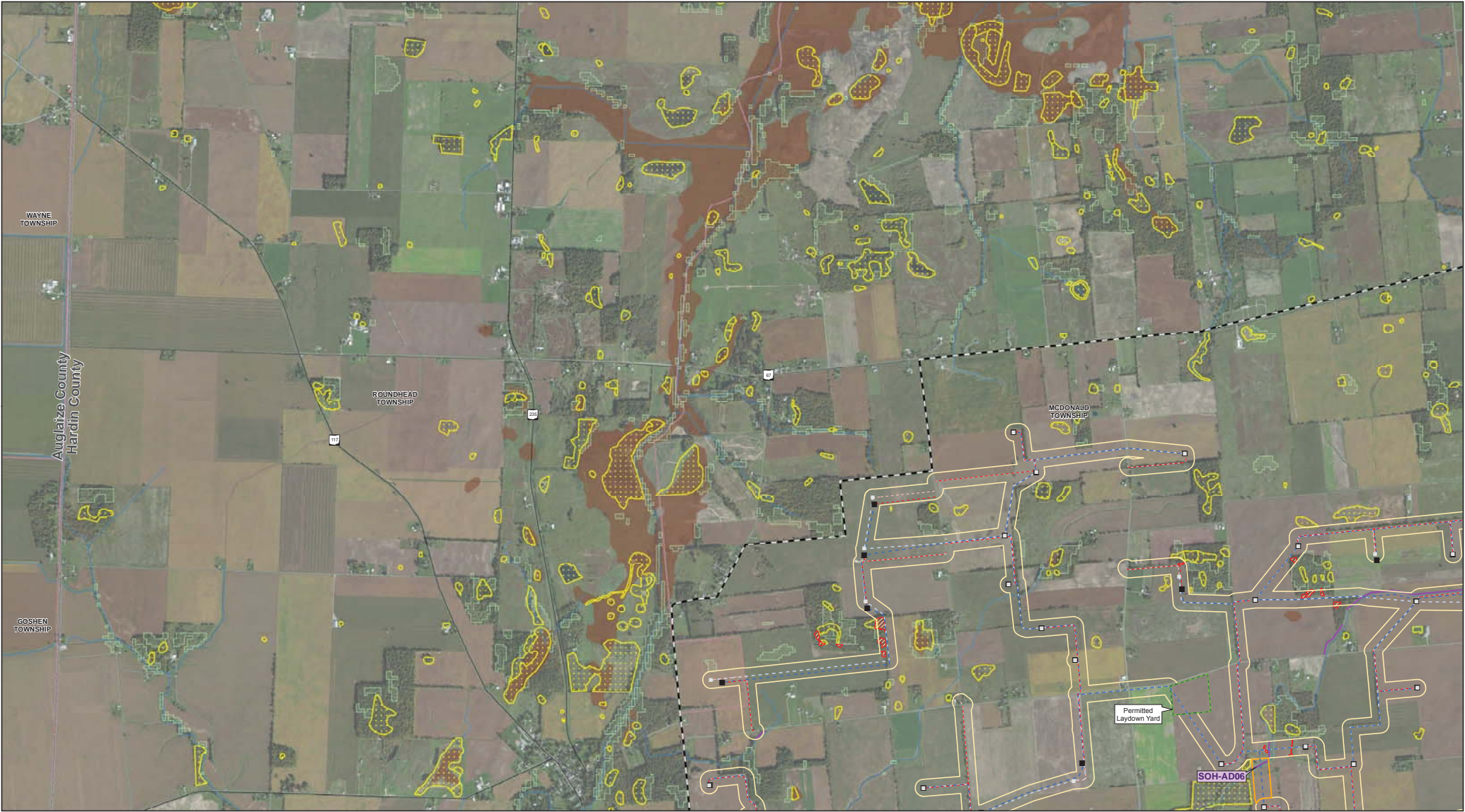
Auglaize County	Sheet 2	Sheet 3
Allen County	Sheet 4	Sheet 5
Hardin County	Sheet 6	Sheet 7
Logan County		
Union County		

Cardno ENTRIX

10 Corporate Circle, Suite 300
New Castle, DE 19720
ph (302) 395-1919
fx (302) 395-1920
www.cardnoentrix.com

Map Created: 8/11/2014

8/11/2014, 6:17 PM GIS Analyst: Dan Call Map Document: S:\GIS\Power/Scioto Ridge Wind Farm\MDX\2014 SRWF Addendum\Amended Figure 4-Wetlands_Overview.mxd Plot Size: 24" x 36"



0 0.5 1 1.5 2 2.5 3 3.5 4 Miles

0 0.5 1 1.5 2 2.5 3 3.5 4 Kilometers

Legend

- Permitted Turbine Location
- Proposed Turbine Location
- Proposed Access Road
- Proposed Underground Collection
- Permitted Access Road
- Permitted Underground Collection
- Proposed Substation
- Permitted Substation
- Proposed Additional Project Corridor
- Permitted Project Corridor
- Permitted Laydown Yards
- Project Boundary
- County Boundary
- Township Boundary
- City Boundary
- USGS NHD Streams
- Existing Railroad
- Fully Hydric Soils
- Inaccessible Properties
- Field Delineated Waterbodies * **SOH-ADxx**
- Field Delineated Wetlands * **WOH-ADxx**
- NWI Wetlands Outside Project Corridor
- Additional Potential Wetlands Areas Denoted by Ohio DNR

Scioto Ridge Wind Farm
Amended Figure 4 - Wetlands - Sheet 2 of 7

Hardin and Logan Counties, Ohio

Map Sheet Index

Allen County	Sheet 2	Sheet 3
Auglaize County	Sheet 4	Sheet 5
Logan County	Sheet 6	Sheet 7

Hardin County

Logan County

Union County

Cardno ENTRIX

10 Corporate Circle, Suite 300
New Castle, DE 19720

ph. (302) 395-1919
fx. (302) 395-1920

www.cardnoentrix.com

Map Created: 8/11/2014

Data Source(s)

Everpower (2012)
Wetlands: Cardno ENTRIX (2012), Ohio DNR
Wetlands Inventory (1991), USFWS (1979)
Soils: USDA-NRCS (2012) County, City,
Township Boundaries, Railroads, ESRI Data
and Maps (2008)
Roads: U.S. Census Bureau Tiger Files
(2012)
USGS National Hydrography Dataset

* Only wetlands and waterbodies within the
Proposed Additional Project Corridor are
labeled on this map.

Legend

Permitted Turbine Location

Proposed Turbine Location

Proposed Access Road

Proposed Underground Collection

Permitted Access Road

Permitted Underground Collection

Proposed Substation

Permitted Substation

Proposed Additional Project Corridor

Permitted Project Corridor

Permitted Laydown Yards

Project Boundary

County Boundary

Township Boundary

City Boundary

USGS NHD Streams

Existing Railroad

Fully Hydric Soils

Inaccessible Properties

Field Delineated Waterbodies * **SOH-ADxx**

Field Delineated Wetlands * **WOH-ADxx**

NWI Wetlands Outside Project Corridor

Additional Potential Wetlands Areas Denoted by Ohio DNR

Map Sheet Index

Allen County	Sheet 2	Sheet 3
Auglaize County	Sheet 4	Sheet 5
Logan County	Sheet 6	Sheet 7

Hardin County

Logan County

Union County

Cardno ENTRIX

10 Corporate Circle, Suite 300
New Castle, DE 19720

ph. (302) 395-1919
fx. (302) 395-1920

www.cardnoentrix.com

Map Created: 8/11/2014

Data Source(s)

Everpower (2012)
Wetlands: Cardno ENTRIX (2012), Ohio DNR
Wetlands Inventory (1991), USFWS (1979)
Soils: USDA-NRCS (2012) County, City,
Township Boundaries, Railroads, ESRI Data
and Maps (2008)
Roads: U.S. Census Bureau Tiger Files
(2012)
USGS National Hydrography Dataset

* Only wetlands and waterbodies within the
Proposed Additional Project Corridor are
labeled on this map.

This foregoing document was electronically filed with the Public Utilities

Commission of Ohio Docketing Information System on

9/11/2014 4:53:26 PM

in

Case No(s). 14-1557-EL-BGA

Summary: Application to Amend -- Exhibit D (Part 9 of 31) electronically filed by Mrs. Gretchen L. Petrucci on behalf of Hardin Wind LLC