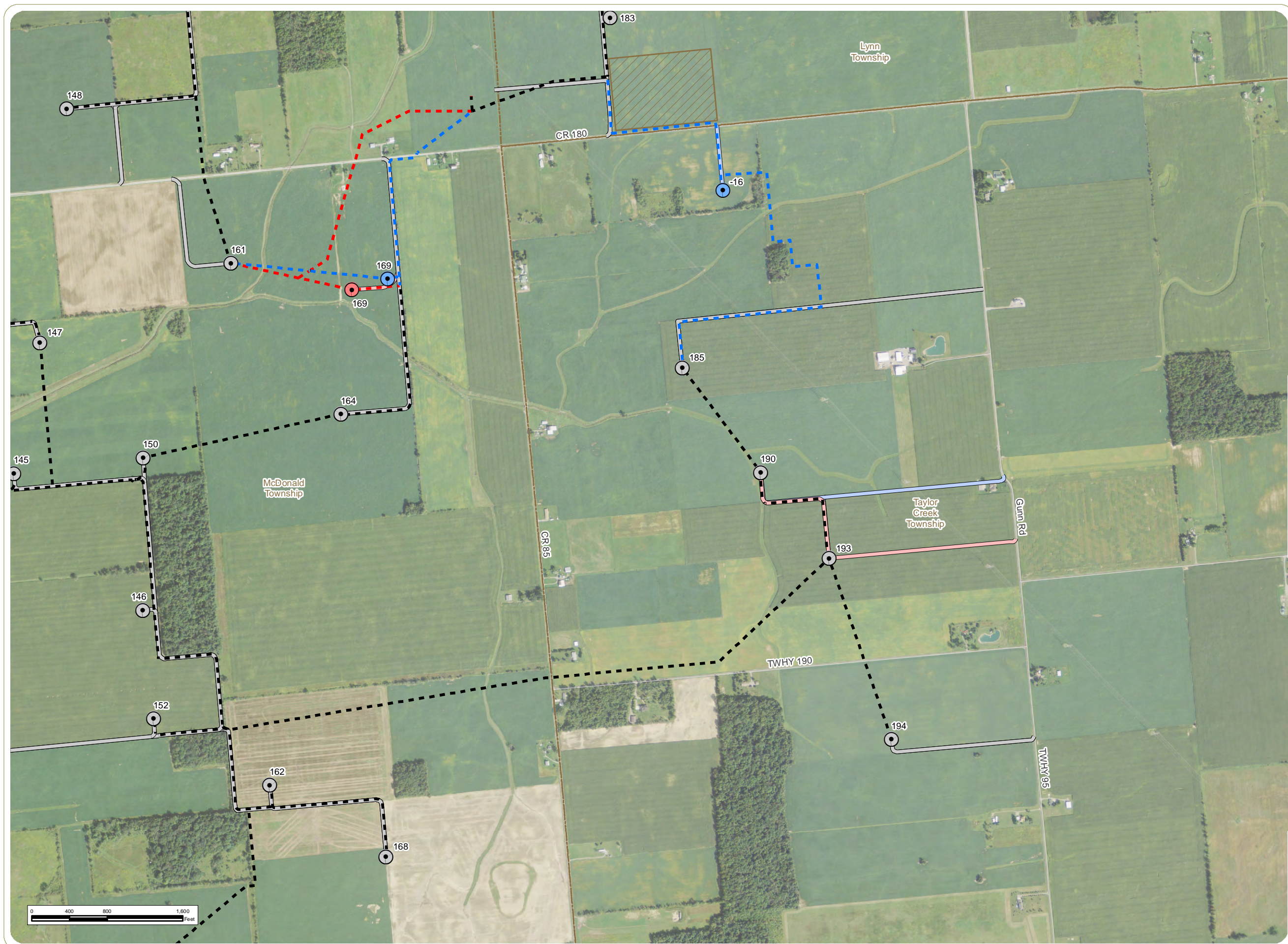


Scioto Ridge Wind Farm
Roundhead, McDonald, Taylor Creek and Lynn Townships - Hardin County, Ohio. Richland and Rushcreek Townships - Logan County, Ohio.
Figure 05-4: Site Layout
Sheet 3 of 15
September 2014

- Amendment Layout**
- Wind Turbine
 - Collection Line
 - Access Road
 - Collector Substation
- Application Layout**
- Wind Turbine
 - Collection Line
 - Access Road
 - Collector Substation
- Unchanged**
- Wind Turbine
 - Collection Line
 - Access Road
 - Met Tower
 - Laydown Yard
 - Town Boundary
 - County Boundary
- Notes:
1. Base Map: NAIP 1-meter resolution orthoimagery, 2011.
 2. Facility shapefiles provided by Applicant.
 3. Map Scale: 1:12,000



**Scioto Ridge
Wind Farm**
Roundhead, McDonald,
Taylor Creek and Lynn
Townships - Hardin County,
Ohio. Richland and
Rushcreek Townships -
Logan County, Ohio.
Figure 05-4: Site Layout
Sheet 4 of 15
September 2014

Amendment Layout

- Wind Turbine
- Collection Line
- Access Road
- Collector Substation

Application Layout

- Wind Turbine
- Collection Line
- Access Road
- Collector Substation

Unchanged

- Wind Turbine
- Collection Line
- Access Road
- Met Tower
- Laydown Yard
- Town Boundary
- County Boundary

Notes:
1. Base Map: NAIP 1-meter resolution
orthoimagery, 2011.
2. Facility shapefiles provided by Applicant.
3. Map Scale: 1:12,000

everpower



www.edrdpc.com

This foregoing document was electronically filed with the Public Utilities

Commission of Ohio Docketing Information System on

9/11/2014 3:18:11 PM

in

Case No(s). 14-1557-EL-BGA

Summary: Application to Amend -- Figure 05-4, Part 2 of 8 electronically filed by Mrs. Gretchen L. Petrucci on behalf of Hardin Wind LLC