

## Revised facility information for Zeeland Renewable Energy Co-Generating Station Plant in Case 14-0506-EL-REN

### Overview

On March 28, 2014 Zeeland Farm Services (ZFS) submitted an application to register their landfill gas to energy facility as an eligible Ohio renewable energy resource generating facility. The commission reviewed and certified this application on May 28, 2014 by issuing certificate # 14-BIO-MI-GATS-0208. This certificate is for the ZFS facility that is composed of two separate plants. ZFS is requesting that the application be amended to reflect only one of the two plants, Plant One.

### Background

The ZFS facility is composed of two separate plants; Plant One, a 1.6MW landfill gas generator that came online in 2006, and Plant Two, a 1.6MW landfill gas generator that came online in 2009. Plant One was under a Power Purchase Agreement until March of 2013. At that time the owners elected to utilize the power for their own industrial needs and retain the RECs for themselves. Plant Two is still under a PPA with Consumers Energy (regional utility) until 2018. ZFS elected to register both plants as one facility in preparation for when Plant Two comes off its PPA.

Plant One has its own utility grade meter. Plant Two does not have its own utility grade meter but utilizes the facility's utility grade meter (currently used on the application). Consumer's Energy determines Plant Two output by subtracting Plant One's meter reading from the facility meter reading.

Unknown to ZFS, Consumer's Energy had registered Plant Two on MIRECs to use Plant Two RECs in the Michigan RPS. This has caused an issue with registering in GATS as a generating facility can only be in one tracking system at a time. For this reason, ZFS would like to restrict their application to only Plant One, and not the entire facility. Plant One is not registered in any attribute tracking system at this point. The changes to the application to reflect this are detailed below.

### Changes to Application

There are a few sections of the previously-completed and certified application that require change in order to restrict certification to Plant One. These are highlighted below with the text changes indicated in ~~striketrough~~ for deleted text and **RED** for added text.

#### **G.1. For the resource or technology you identify in Sections G.4 - G.13 below, please provide a written description of the system.**

Zeeland Renewable Energy Co-Generating Station Plant **One** is a ~~3-2~~ **1.6**MW landfill gas to energy facility owned by Zeeland Farm Services, Inc. The ~~facility~~ **plant** consists of ~~two~~ **one** Caterpillar Model G3520C Digester/Landfill Gas fueled generators set for continuous power, operating in parallel with the grid, 0.8 power factor, 480-volt,three-phase, 60Hz @ 1200 rpm. The active gas extraction system collects landfill gas via wells and pipe header system. The gas is filtered and compressed to 11 psi. The heat content is approximately 540 Btu per cubic foot. The pipe system runs 6 miles from Autumn Hills Recycling and Disposal Facility to Zeeland Farm Services, the landfill gas supply is under a 24 year agreement.

#### **G.2. Please include a detailed description of how the output of the facility is going to be measured and verified, including the configuration of the meter(s) and the meter type(s).**

The output of the facility is verified by a billing grade bi-directional metering system. The meter used is a Siemens ~~RXRS4~~ **FM9S**. This facility is on Consumer Energy lines and is located at Zeeland Farm Service's **property**. **The meter is located** behind the plant 2 location.

**G.10g What is the projected annual gross generation from each fuel type?**

~~26,600~~ 13,300 MWh (100% Landfill Gas)

**I.1 For each generating unit, provide the following information:**

<u>Unit</u>	<u>In-Service</u>	<u>Unit</u>	<u>Nameplate</u>	<u>Projected</u>	<u>Gross</u>	<u>Expected</u>	<u>Annual</u>	<u>Number</u>	<u>of</u>
<u>Date</u>		<u>Capacity (MW)</u>		<u>Annual Generation</u>		<u>Capacity Factor %</u>		<u>Generating Units</u>	
03/15/06		1.6		13,300		94.9		1	
<del>08/15/09</del>		<del>1.6</del>		<del>13,300</del>		<del>94.9</del>		<del>1</del>	

**N.1 Please provide the following information for each meter used in your system.**

**N.1.a Manufacturer:** Siemens

**N.1.b Serial Number:** ~~83183096~~ 110703710

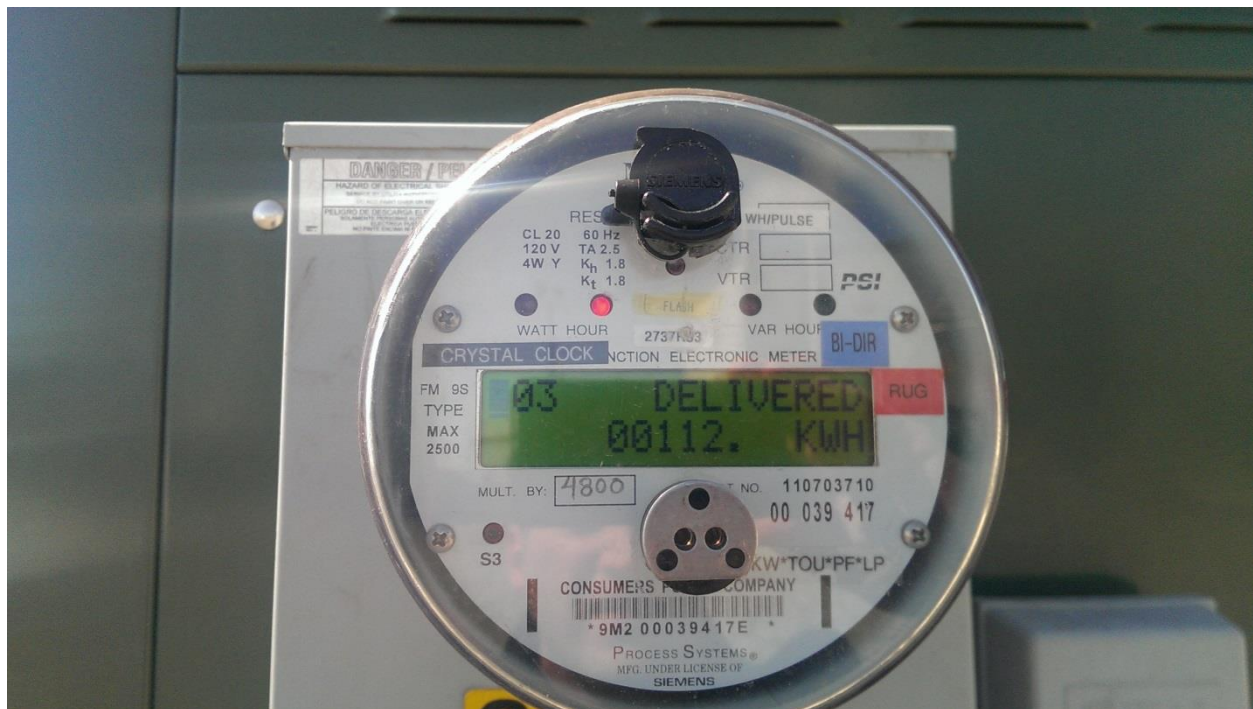
**N.1.c Type:** ~~RXRS4~~ FM9S

**N.1.d Date of Last Certification:** August 01, 2009

**N.1.e** Report the total meter reading number at the time the photograph was taken and specify the appropriate unit of generation (e.g., kWh): ~~39435~~ 112 KWH

Further, the pictures of the meter should be replaced with the following:

Date Taken: 03/26/14 2:01 PM



**This foregoing document was electronically filed with the Public Utilities**

**Commission of Ohio Docketing Information System on**

**7/25/2014 12:47:41 PM**

**in**

**Case No(s). 14-0506-EL-REN**

Summary: Correspondence Revised facility information electronically filed by Ryan Cook on behalf of Zeeland Farm Services, Inc