

- Structures
- Bixby Groves Alignment
- Corridor 200'
- Quarter Mile Buffer
- ~ Roads
- ~ Railroads
- City Boundary
- Township Boundary
- Agricultural
- Forest/Wood lot
- Residential
- Recreational
- Commercial/Industrial
- Industrial/Transportation
- Open Water
- Delineated Wetland

N
W E
S

1" = 500'

0 250 500
Feet

The State of Ohio
Franklin County
Madison and Truro Townships

Date: 1/14/2014
Author: JPT

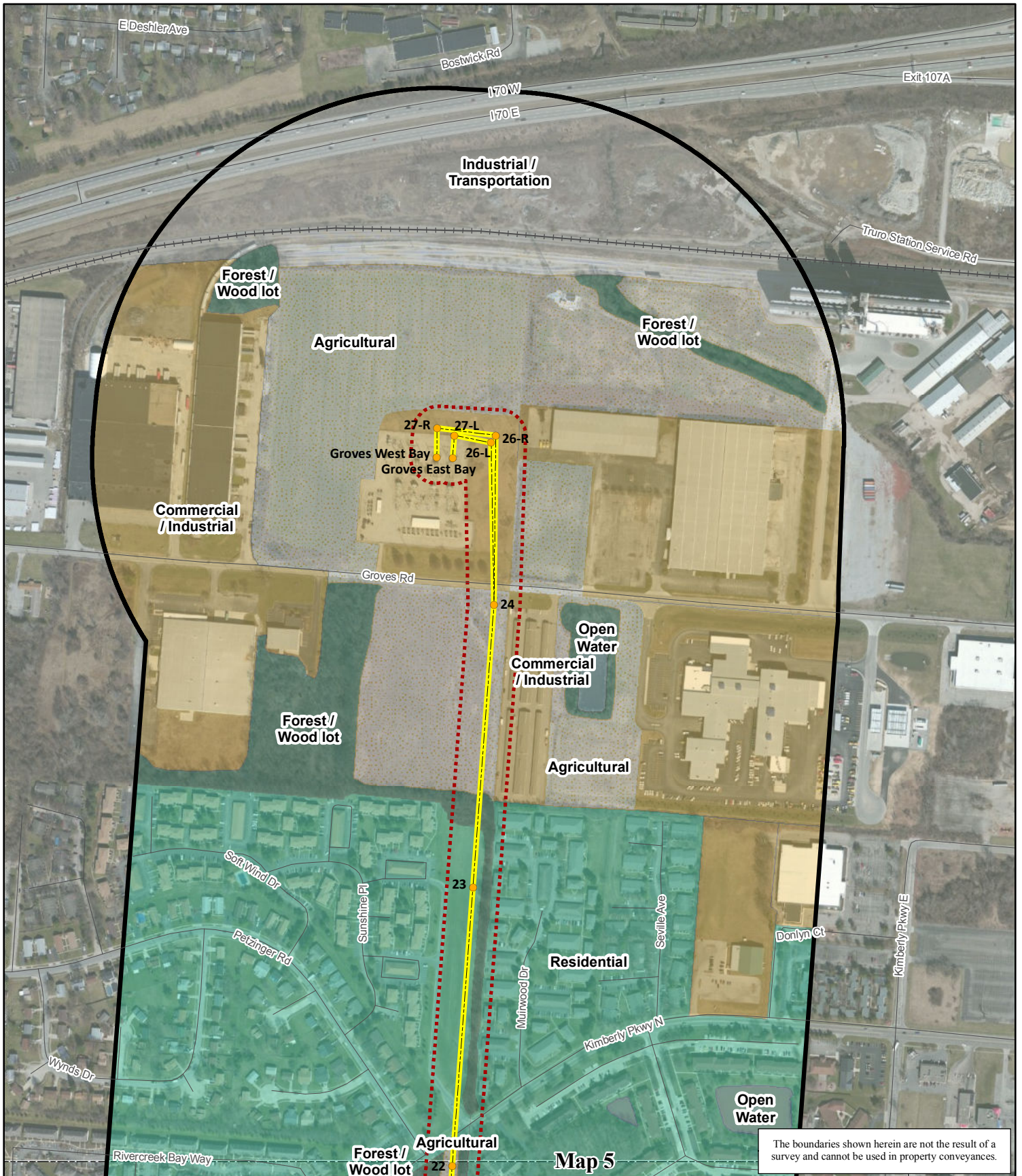
Bixby - Groves
36468
Page 5 of 6

Land Use / Land Cover

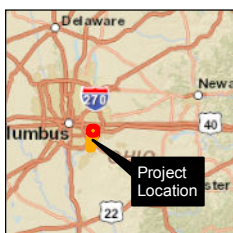
AEP AMERICAN
ELECTRIC
POWER

AEP: America's Energy Partner®

POWER
ENGINEERS



The boundaries shown herein are not the result of a survey and cannot be used in property conveyances.



- | | |
|--------------------------|-----------------------------|
| ● Structures | ○ Agricultural |
| — Bixby Groves Alignment | ○ Forest/Wood lot |
| — Corridor 200' | ○ Residential |
| ○ Quarter Mile Buffer | ○ Recreational |
| — Roads | ○ Commercial/Industrial |
| — Railroads | ○ Industrial/Transportation |
| ○ City Boundary | ○ Open Water |
| — Township Boundary | ○ Delineated Wetland |

N
W E
S

1" = 500'

0 250 500
Feet

The State of Ohio
Franklin County
Madison and Truro Townships

Date: 1/14/2014
Author: JPT

Bixby - Groves
36468
Page 6 of 6

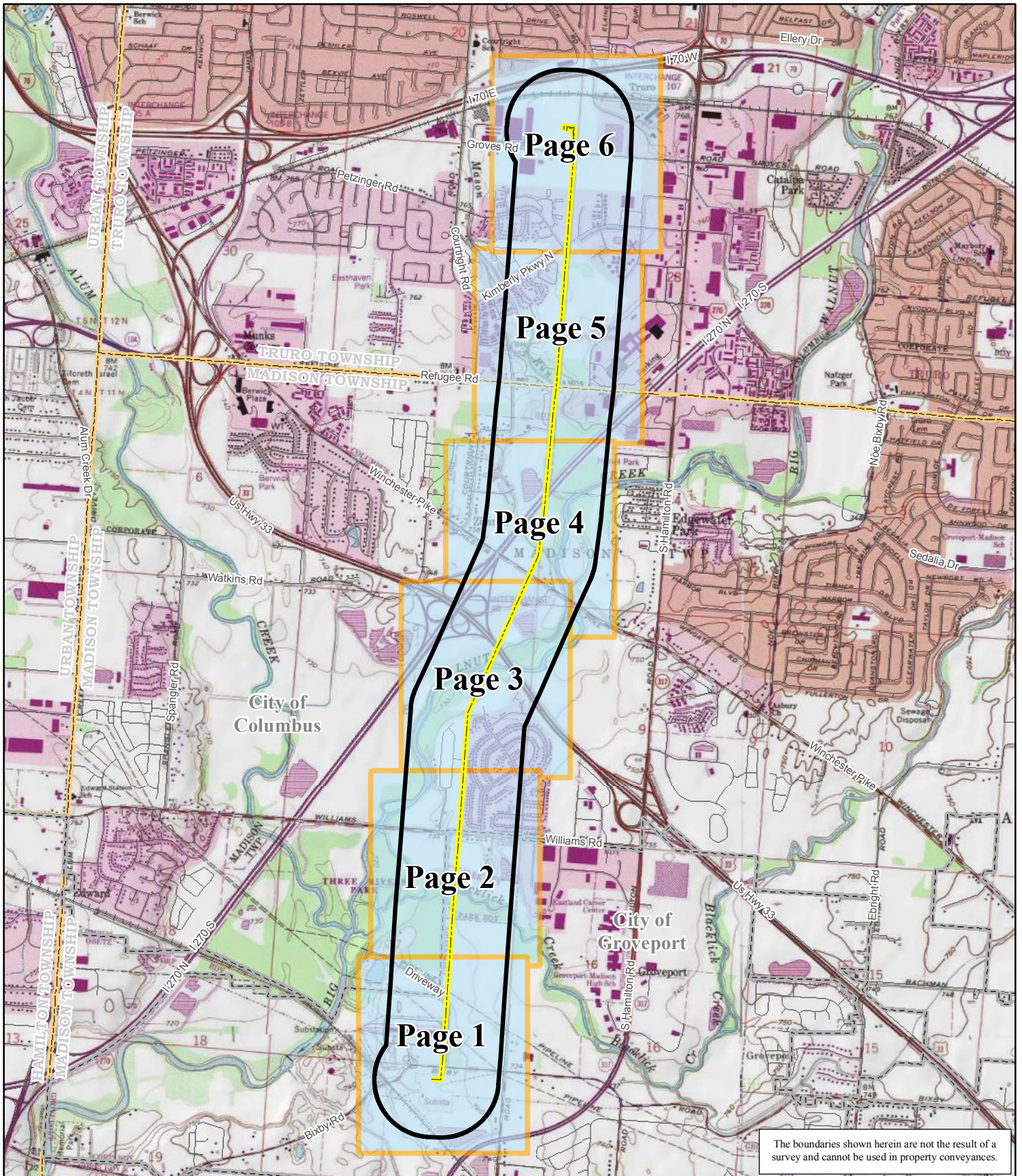
Land Use / Land Cover

AEP AMERICAN
ELECTRIC
POWER

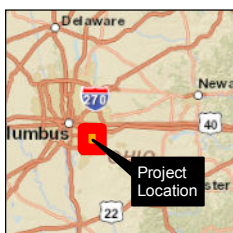
AEP, America's Energy Partner®

POWER
ENGINEERS

APPENDIX B MAP SET B, LAND USE WITH USGS QUAD MAP BASE



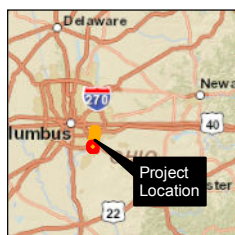
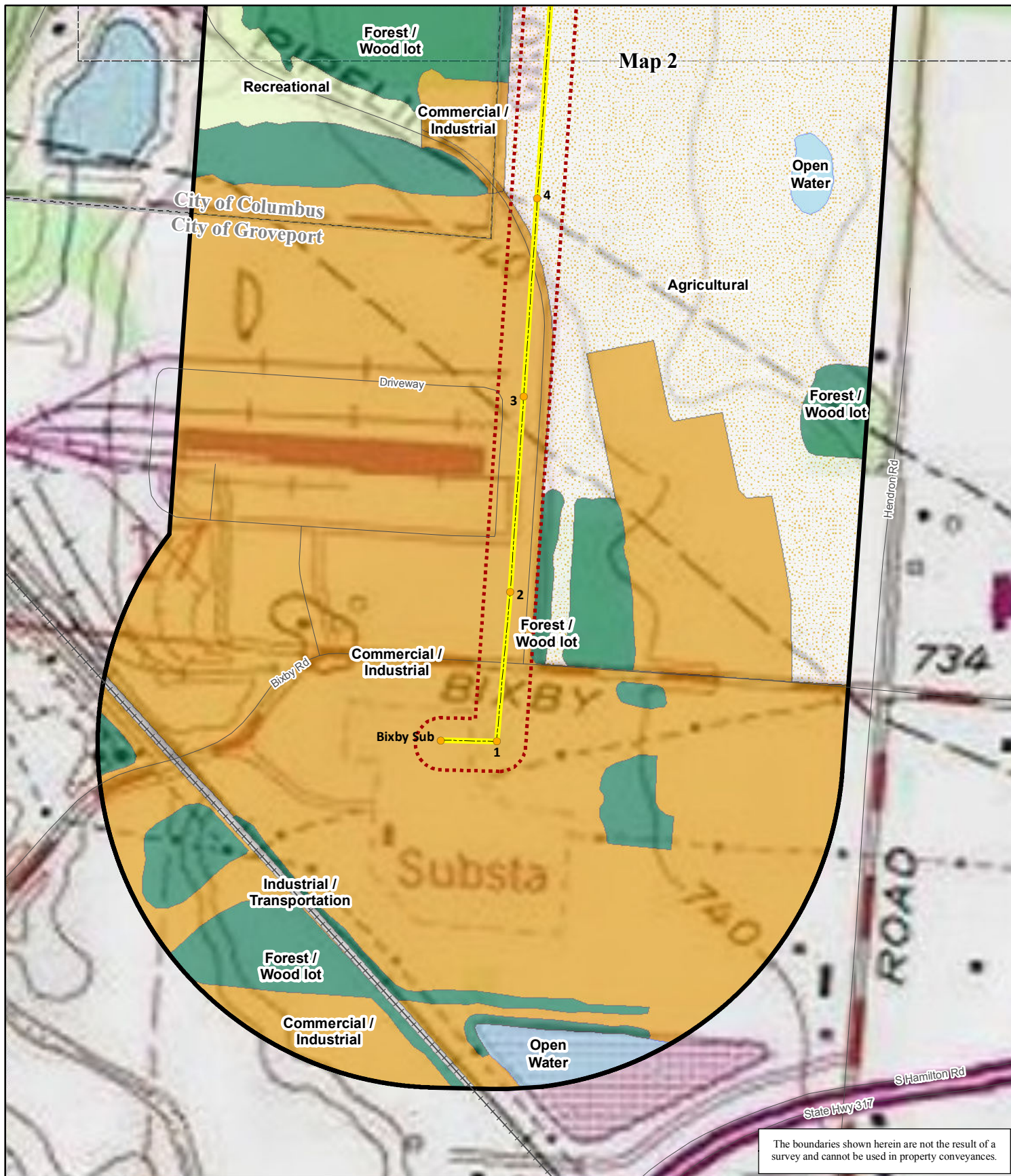
The boundaries shown herein are not the result of a survey and cannot be used in property conveyances.



- Bixby Groves Alignment
- Quarter Mile Buffer
- Roads
- Railroads
- City Boundary
- Township Boundary
- Map Tile

1" = 3,000'
 0 3,000
 Feet
 The State of Ohio
 Franklin County
 Madison and Truro Townships
 Date: 1/14/2014
 Author: JPT

Bixby - Groves
36468
 INDEX of 6 Map Tiles
Land Use / Land Cover



- Structures
- Bixby Groves Alignment
- Corridor 200'
- Quarter Mile Buffer
- ~ Roads
- ~ Railroads
- City Boundary
- Township Boundary
- Agricultural
- Forest/Wood lot
- Residential
- Recreational
- Commercial/Industrial
- Industrial/Transportation
- Open Water
- Delineated Wetland

N
W E
S

1" = 500'

0 250 500
Feet

The State of Ohio
Franklin County
Madison and Truro Townships

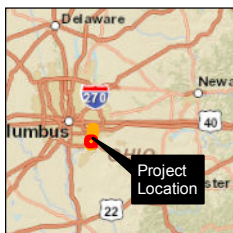
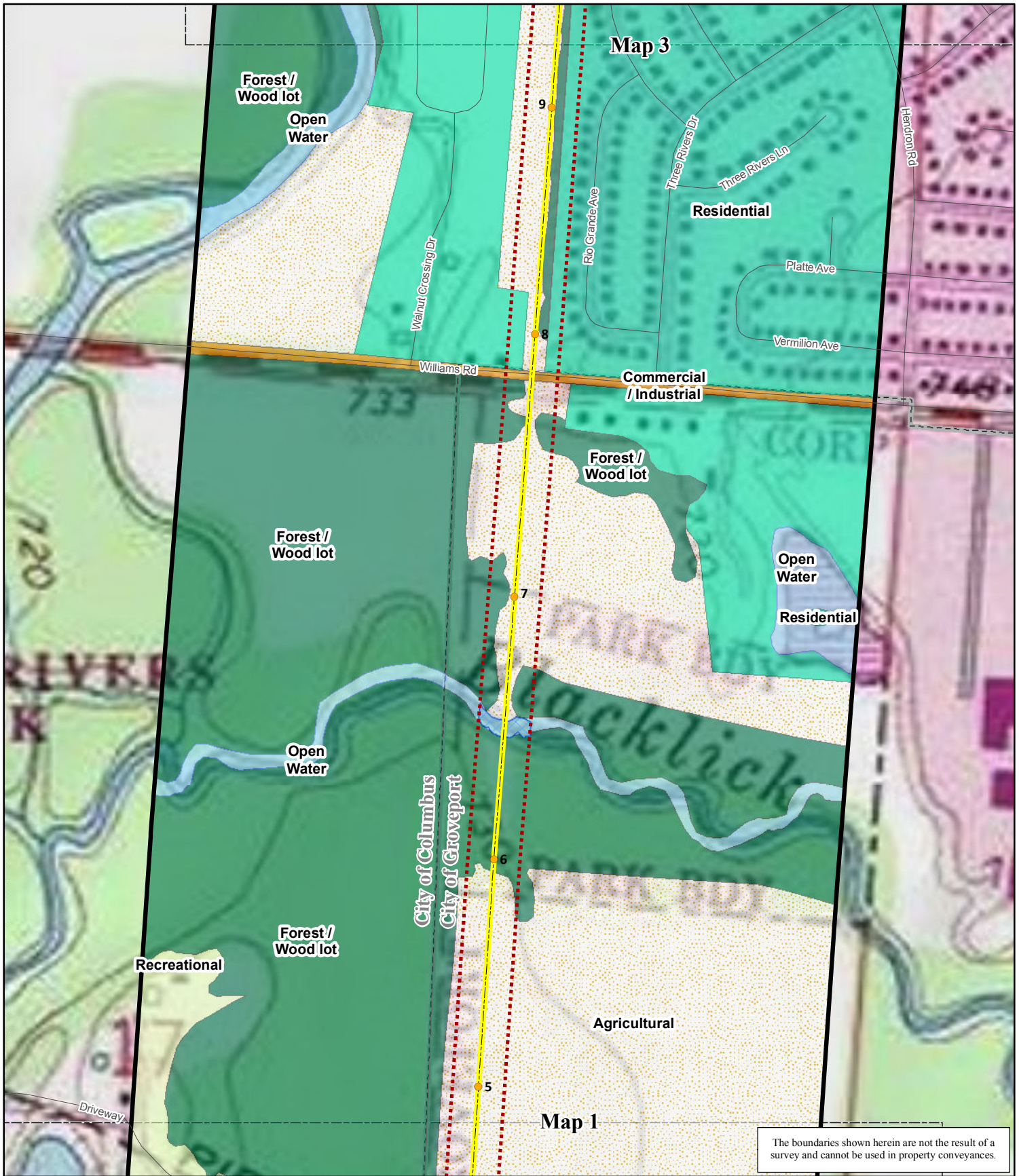
Date: 1/14/2014
Author: JPT

Bixby - Groves
36468
Page 1 of 6

Land Use / Land Cover

AEP AMERICAN
ELECTRIC
POWER
AEP: America's Energy Partner®

POWER
ENGINEERS



- Structures
- Bixby Groves Alignment
- Corridor 200'
- Quarter Mile Buffer
- ~ Roads
- ~ Railroads
- City Boundary
- Township Boundary
- Agricultural
- Forest/Wood lot
- Residential
- Recreational
- Commercial/Industrial
- Industrial/Transportation
- Open Water
- Delineated Wetland

N
 W — E
 S

1" = 500'

0 250 500
Feet

The State of Ohio
Franklin County
Madison and Truro Townships

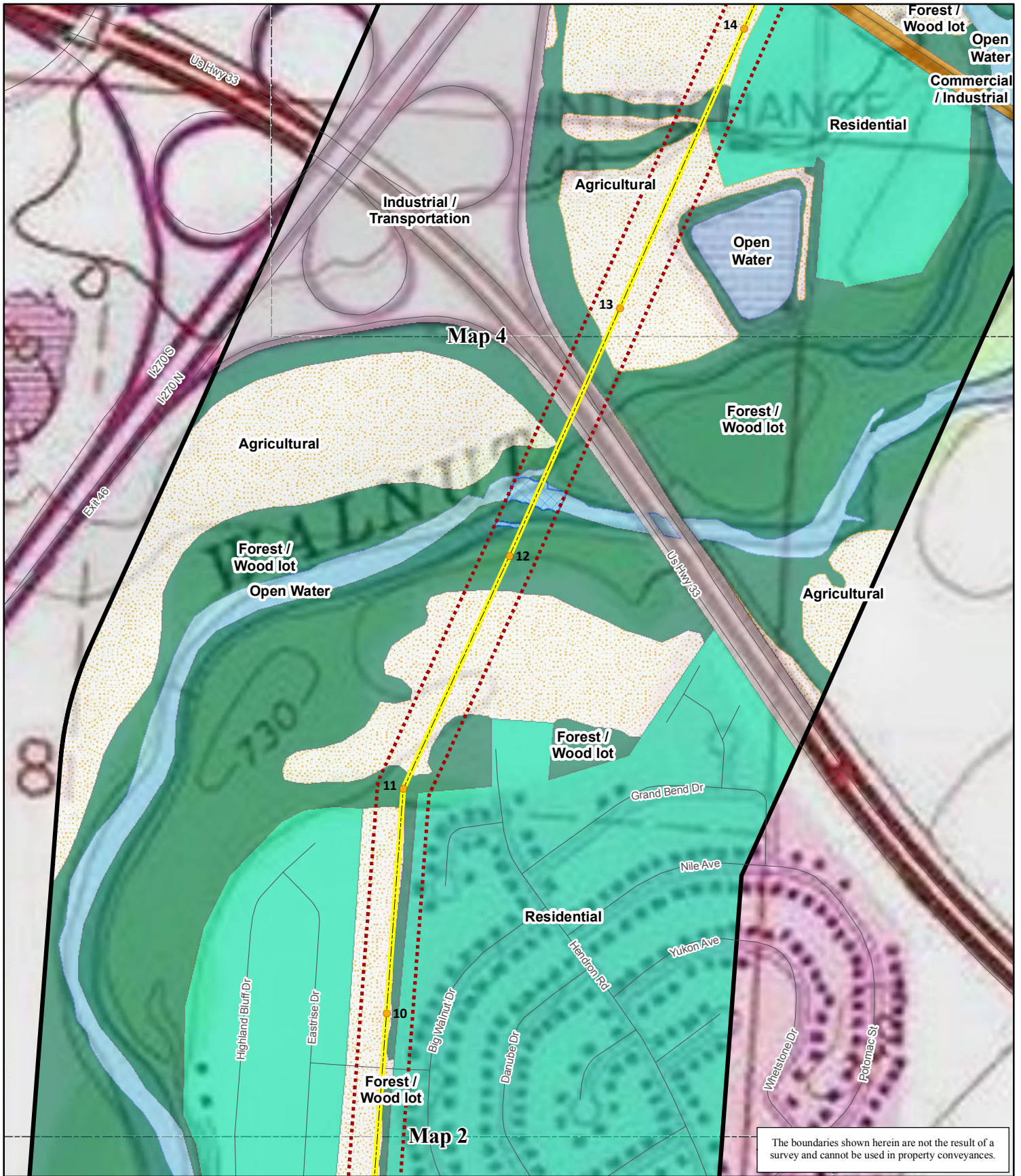
Date: 1/14/2014
Author: JPT

Bixby - Groves
36468
Page 2 of 6

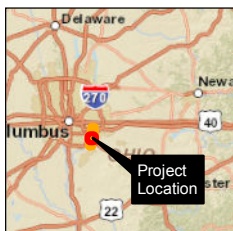
Land Use / Land Cover

AEP AMERICAN ELECTRIC POWER
AEP: America's Energy Partner®

POWER ENGINEERS



The boundaries shown herein are not the result of a survey and cannot be used in property conveyances.



- | | |
|--------------------------|-----------------------------|
| ● Structures | ○ Agricultural |
| — Bixby Groves Alignment | ○ Forest/Wood lot |
| — Corridor 200' | ○ Residential |
| ● Quarter Mile Buffer | ○ Recreational |
| — Roads | ○ Commercial/Industrial |
| — Railroads | ○ Industrial/Transportation |
| — City Boundary | ○ Open Water |
| — Township Boundary | ○ Delineated Wetland |

N
 W — E
 S

1" = 500'

0 250 500
Feet

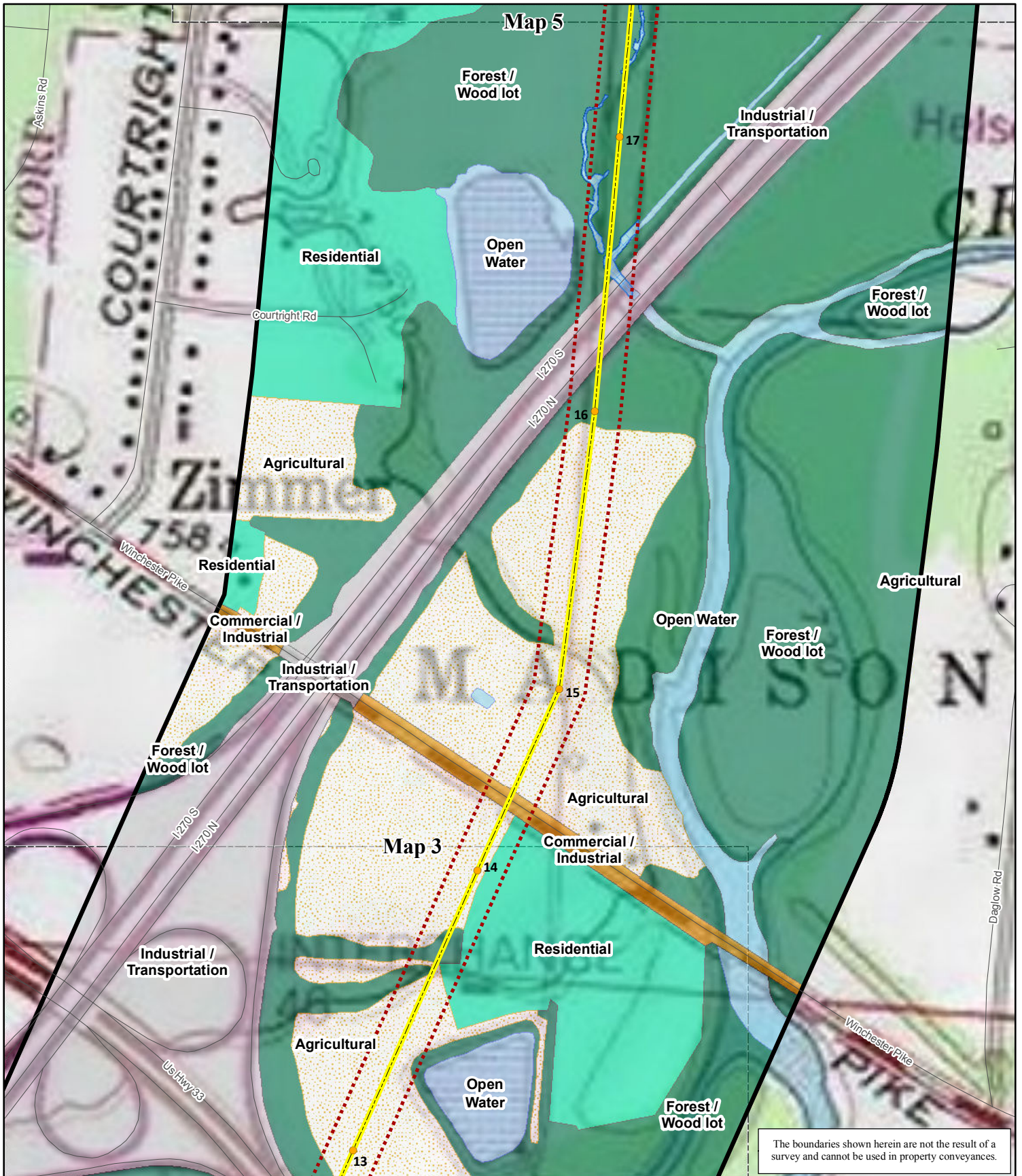
The State of Ohio
Franklin County
Madison and Truro Townships

Date: 1/14/2014
Author: JPT

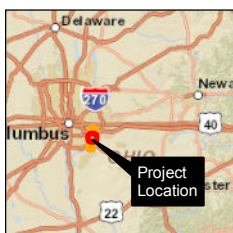
Bixby - Groves
36468
Page 3 of 6

Land Use / Land Cover

AEP: America's Energy Partner®



The boundaries shown herein are not the result of a survey and cannot be used in property conveyances.



- Structures
- Bixby Groves Alignment
- Corridor 200'
- Quarter Mile Buffer
- Roads
- Railroads
- City Boundary
- Township Boundary
- Agricultural
- Forest/Wood lot
- Residential
- Recreational
- Commercial/Industrial
- Industrial/Transportation
- Open Water
- Delineated Wetland

N
 W — E
 S

1" = 500'

0 250 500
Feet

The State of Ohio
Franklin County
Madison and Truro Townships

Date: 1/14/2014
Author: JPT

Bixby - Groves
36468
Page 4 of 6

Land Use / Land Cover

AEP, America's Energy Partner®



- Structures
- Bixby Groves Alignment
- Corridor 200'
- Quarter Mile Buffer
- Roads
- Railroads
- City Boundary
- Township Boundary
- Agricultural
- Forest/Wood lot
- Residential
- Recreational
- Commercial/Industrial
- Industrial/Transportation
- Open Water
- Delineated Wetland

1" = 500'
 0 250 500
 Feet
 The State of Ohio
 Franklin County
 Madison and Truro Townships
 Date: 1/14/2014
 Author: JPT

Bixby - Groves
 36468
 Page 5 of 6
Land Use / Land Cover

This foregoing document was electronically filed with the Public Utilities

Commission of Ohio Docketing Information System on

3/31/2014 11:42:52 AM

in

Case No(s). 14-0142-EL-BLN

Summary: Letter of Notification Bixby Groves 138 kV Transmission Line Rebuild Project
electronically filed by Mr. Yazen Alami on behalf of AEP Ohio Transmission Company