

| Seneca County, Ohio (OH147) | | | |
|-----------------------------|--------------------------------------|--------------|----------------|
| Map Unit Symbol | Map Unit Name | Acres in AOI | Percent of AOI |
| Sh | Shoals silt loam, frequently flooded | 0.5 | 0.0% |
| Totals for Area of Interest | | 1,162.5 | 100.0% |

Soil Map—Seneca County, Ohio
(AEP-Tiffin Center to Fremont Center 138kV Line Rebuild)

Map Scale: 1:16,300 if printed on A landscape (11" x 8.5") sheet.

Map projection: Web Mercator Corner coordinates: WGS84 Edge tics: UTM Zone 17N WGS84

Map Unit Legend

| Seneca County, Ohio (OH147) | | | |
|-----------------------------|---|--------------|----------------|
| Map Unit Symbol | Map Unit Name | Acres in AOI | Percent of AOI |
| BdB | Belmore loam, 2 to 6 percent slopes | 32.7 | 2.9% |
| BfF2 | Belmore-Morley complex, 18 to 50 percent slopes, eroded | 62.4 | 5.6% |
| Ch | Chagrin silt loam, occasionally flooded | 106.2 | 9.5% |
| Co | Colwood silt loam | 48.7 | 4.3% |
| DmA | Digby loam, 1 to 4 percent slopes | 32.4 | 2.9% |
| GaB | Gallman loam, 2 to 6 percent slopes | 7.0 | 0.6% |
| GwB | Glynwood silt loam, 2 to 6 percent slopes | 1.0 | 0.1% |
| HaA | Haney loam, 0 to 2 percent slopes | 21.1 | 1.9% |
| HaB | Haney loam, 2 to 6 percent slopes | 13.7 | 1.2% |
| HaC2 | Haney loam, 6 to 12 percent slopes, eroded | 8.3 | 0.7% |
| HkA | Haskins loam, 0 to 2 percent slopes | 196.2 | 17.5% |
| HoA | Hoytville clay loam, 0 to 1 percent slopes | 137.2 | 12.2% |
| KbA | Kibbie fine sandy loam, 0 to 2 percent slopes | 81.7 | 7.3% |
| Me | Mermill loam | 7.8 | 0.7% |
| Mf | Millgrove loam | 0.9 | 0.1% |
| MrD2 | Morley silt loam, 12 to 18 percent slopes, eroded | 2.5 | 0.2% |
| NpA | Nappanee silt loam, 0 to 2 percent slopes | 274.5 | 24.5% |
| NpB | Nappanee silt loam, 2 to 6 percent slopes | 21.6 | 1.9% |
| RmB | Rawson loam, 2 to 6 percent slopes | 21.0 | 1.9% |
| SdB | Seward loamy fine sand, 2 to 6 percent slopes | 17.7 | 1.6% |
| Sh | Shoals silt loam, frequently flooded | 26.3 | 2.4% |
| Totals for Area of Interest | | 1,120.9 | 100.0% |

Soil Map—Seneca County, Ohio
(AEP-Tiffin Center to Fremont Center 138kV Line Rebuild)

Map Scale: 1:16,000 if printed on A landscape (11" x 8.5") sheet.

Map projection: Web Mercator Corner coordinates: WGS84 Edge ticks: UTM Zone 17N WGS84



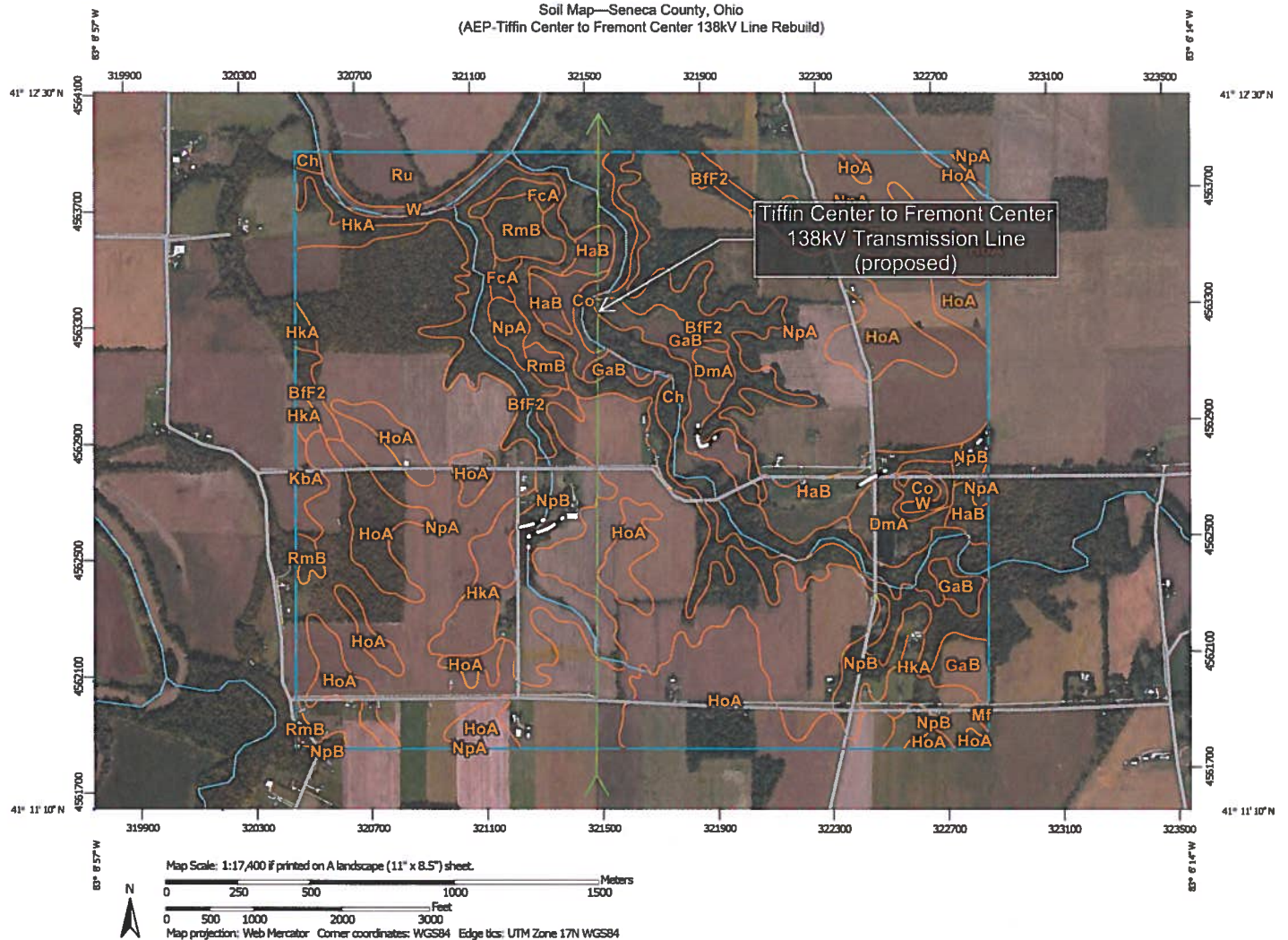
Web Soil Survey
National Cooperative Soil Survey

9/30/2013
Page 1 of 3

Map Unit Legend

| Seneca County, Ohio (OH147) | | | |
|------------------------------------|---|----------------|----------------|
| Map Unit Symbol | Map Unit Name | Acres in AOI | Percent of AOI |
| BdB | Belmore loam, 2 to 6 percent slopes | 8.6 | 0.8% |
| BfF2 | Belmore-Morley complex, 18 to 50 percent slopes, eroded | 36.3 | 3.3% |
| Ch | Chagrin silt loam, occasionally flooded | 25.9 | 2.3% |
| Co | Colwood silt loam | 20.6 | 1.9% |
| DmA | Digby loam, 1 to 4 percent slopes | 2.1 | 0.2% |
| HaA | Haney loam, 0 to 2 percent slopes | 3.6 | 0.3% |
| HaB | Haney loam, 2 to 6 percent slopes | 4.6 | 0.4% |
| HaC2 | Haney loam, 6 to 12 percent slopes, eroded | 5.0 | 0.5% |
| HkA | Haskins loam, 0 to 2 percent slopes | 23.5 | 2.1% |
| HkB | Haskins loam, 2 to 6 percent slopes | 3.7 | 0.3% |
| HoA | Hoytville clay loam, 0 to 1 percent slopes | 375.2 | 34.0% |
| KbA | Kibbie fine sandy loam, 0 to 2 percent slopes | 7.4 | 0.7% |
| Mf | Millgrove loam | 2.8 | 0.3% |
| MrD2 | Morley silt loam, 12 to 18 percent slopes, eroded | 3.7 | 0.3% |
| NpA | Nappanee silt loam, 0 to 2 percent slopes | 427.1 | 38.7% |
| NpB | Nappanee silt loam, 2 to 6 percent slopes | 74.8 | 6.8% |
| RmB | Rawson loam, 2 to 6 percent slopes | 31.3 | 2.8% |
| SdB | Seward loamy fine sand, 2 to 6 percent slopes | 10.6 | 1.0% |
| Sh | Shoals silt loam, frequently flooded | 36.9 | 3.3% |
| Totals for Area of Interest | | 1,103.7 | 100.0% |

Soil Map—Seneca County, Ohio
(AEP-Tiffin Center to Fremont Center 138kV Line Rebuild)



Natural Resources
Conservation Service

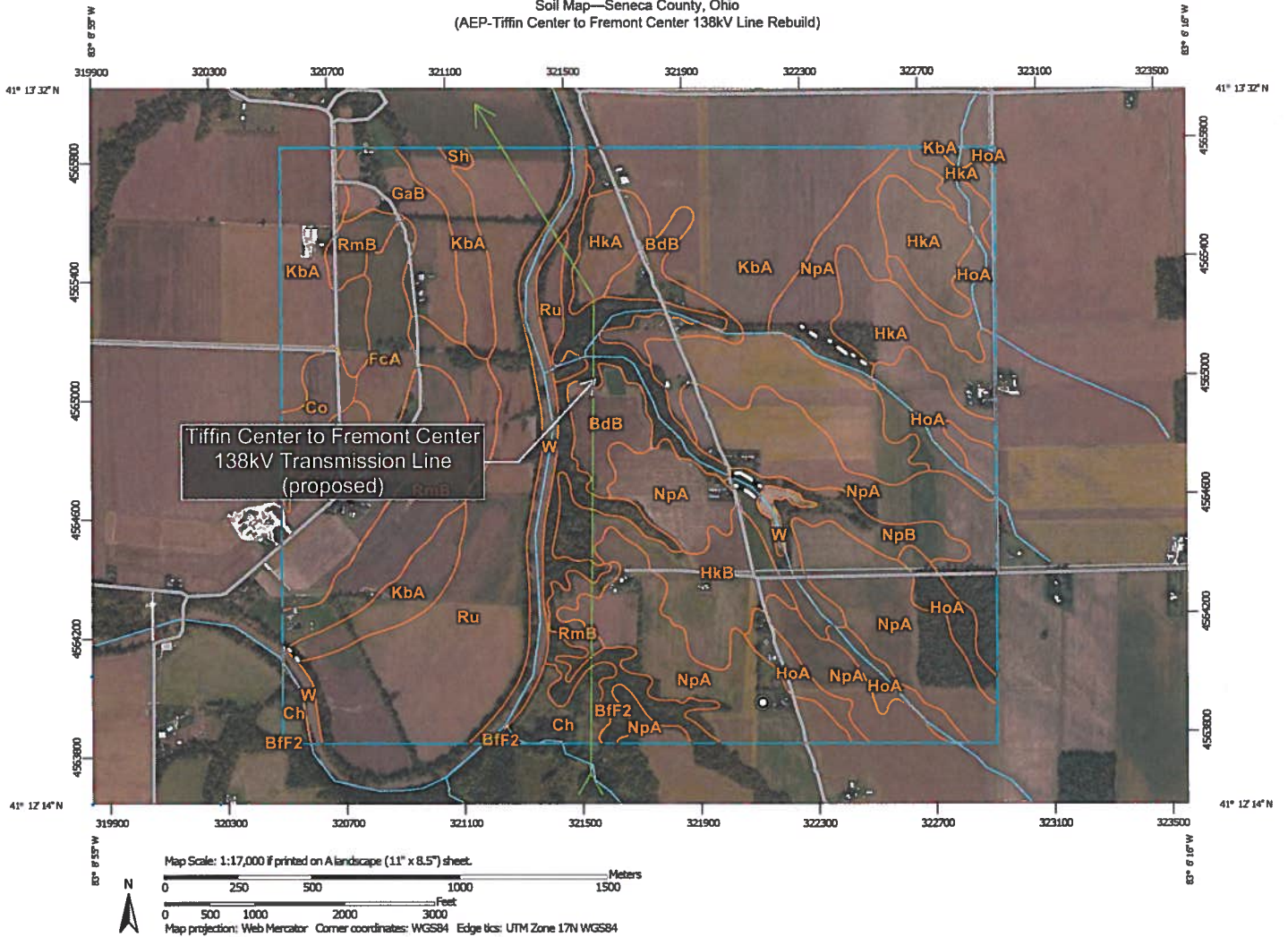
Web Soil Survey
National Cooperative Soil Survey

9/30/2013
Page 1 of 3

Map Unit Legend

| Seneca County, Ohio (OH147) | | | |
|-----------------------------|---|--------------|----------------|
| Map Unit Symbol | Map Unit Name | Acres in AOI | Percent of AOI |
| BfF2 | Belmore-Morley complex, 18 to 50 percent slopes, eroded | 122.9 | 10.0% |
| Ch | Chagrin silt loam, occasionally flooded | 70.3 | 5.7% |
| Co | Colwood silt loam | 13.2 | 1.1% |
| DmA | Digby loam, 1 to 4 percent slopes | 18.7 | 1.5% |
| FcA | Fitchville silt loam, 1 to 4 percent slopes | 6.8 | 0.6% |
| GaB | Gallman loam, 2 to 6 percent slopes | 36.8 | 3.0% |
| HaB | Haney loam, 2 to 6 percent slopes | 33.6 | 2.7% |
| HkA | Haskins loam, 0 to 2 percent slopes | 57.7 | 4.7% |
| HoA | Hoytville clay loam, 0 to 1 percent slopes | 159.7 | 13.0% |
| KbA | Kibbie fine sandy loam, 0 to 2 percent slopes | 5.6 | 0.5% |
| Mf | Millgrove loam | 1.1 | 0.1% |
| NpA | Nappanee silt loam, 0 to 2 percent slopes | 562.2 | 45.9% |
| NpB | Nappanee silt loam, 2 to 6 percent slopes | 85.6 | 7.0% |
| RmB | Rawson loam, 2 to 6 percent slopes | 19.2 | 1.6% |
| Ru | Ross silt loam, occasionally flooded | 19.5 | 1.6% |
| W | Water | 11.2 | 0.9% |
| Totals for Area of Interest | | 1,224.1 | 100.0% |

Soil Map—Seneca County, Ohio
(AEP-Tiffin Center to Fremont Center 138kV Line Rebuild)



Natural Resources
Conservation Service

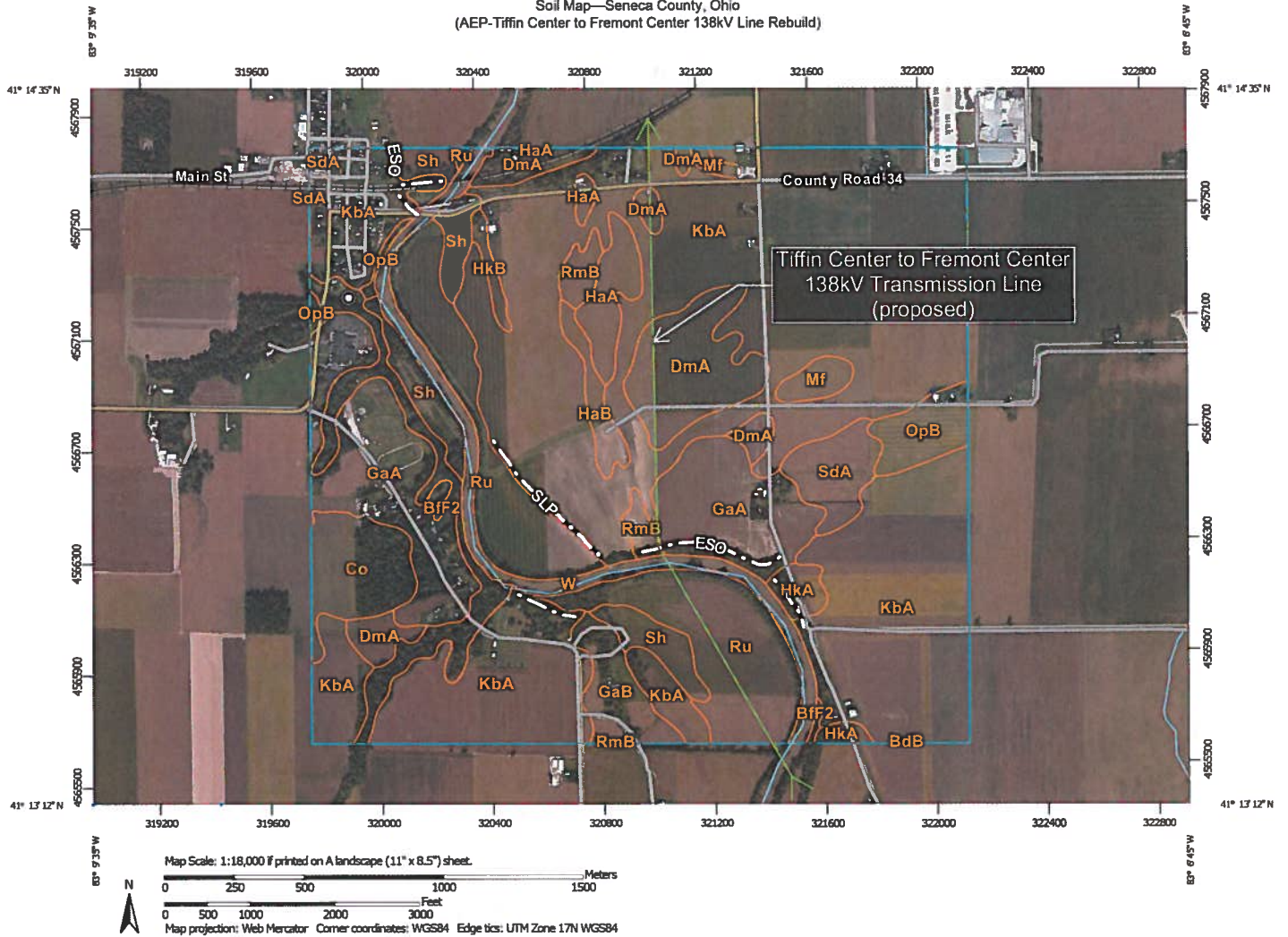
Web Soil Survey
National Cooperative Soil Survey

9/30/2013
Page 1 of 3

Map Unit Legend

| Seneca County, Ohio (OH147) | | | |
|------------------------------------|---|----------------|----------------|
| Map Unit Symbol | Map Unit Name | Acres in AOI | Percent of AOI |
| BdB | Belmore loam, 2 to 6 percent slopes | 39.3 | 3.3% |
| BfF2 | Belmore-Morley complex, 18 to 50 percent slopes, eroded | 62.6 | 5.2% |
| Ch | Chagrin silt loam, occasionally flooded | 19.5 | 1.6% |
| Co | Colwood silt loam | 13.9 | 1.2% |
| FcA | Fitchville silt loam, 1 to 4 percent slopes | 28.5 | 2.4% |
| GaB | Gallman loam, 2 to 6 percent slopes | 30.3 | 2.5% |
| HkA | Haskins loam, 0 to 2 percent slopes | 76.8 | 6.4% |
| HkB | Haskins loam, 2 to 6 percent slopes | 43.7 | 3.6% |
| HoA | Hoytville clay loam, 0 to 1 percent slopes | 76.6 | 6.4% |
| KbA | Kibbie fine sandy loam, 0 to 2 percent slopes | 273.1 | 22.7% |
| NpA | Nappanee silt loam, 0 to 2 percent slopes | 255.0 | 21.2% |
| NpB | Nappanee silt loam, 2 to 6 percent slopes | 30.7 | 2.5% |
| RmB | Rawson loam, 2 to 6 percent slopes | 65.2 | 5.4% |
| Ru | Ross silt loam, occasionally flooded | 152.1 | 12.6% |
| Sh | Shoals silt loam, frequently flooded | 1.3 | 0.1% |
| W | Water | 35.8 | 3.0% |
| Totals for Area of Interest | | 1,204.4 | 100.0% |

Soil Map—Seneca County, Ohio
(AEP-Tiffin Center to Fremont Center 138kV Line Rebuild)



Natural Resources
Conservation Service

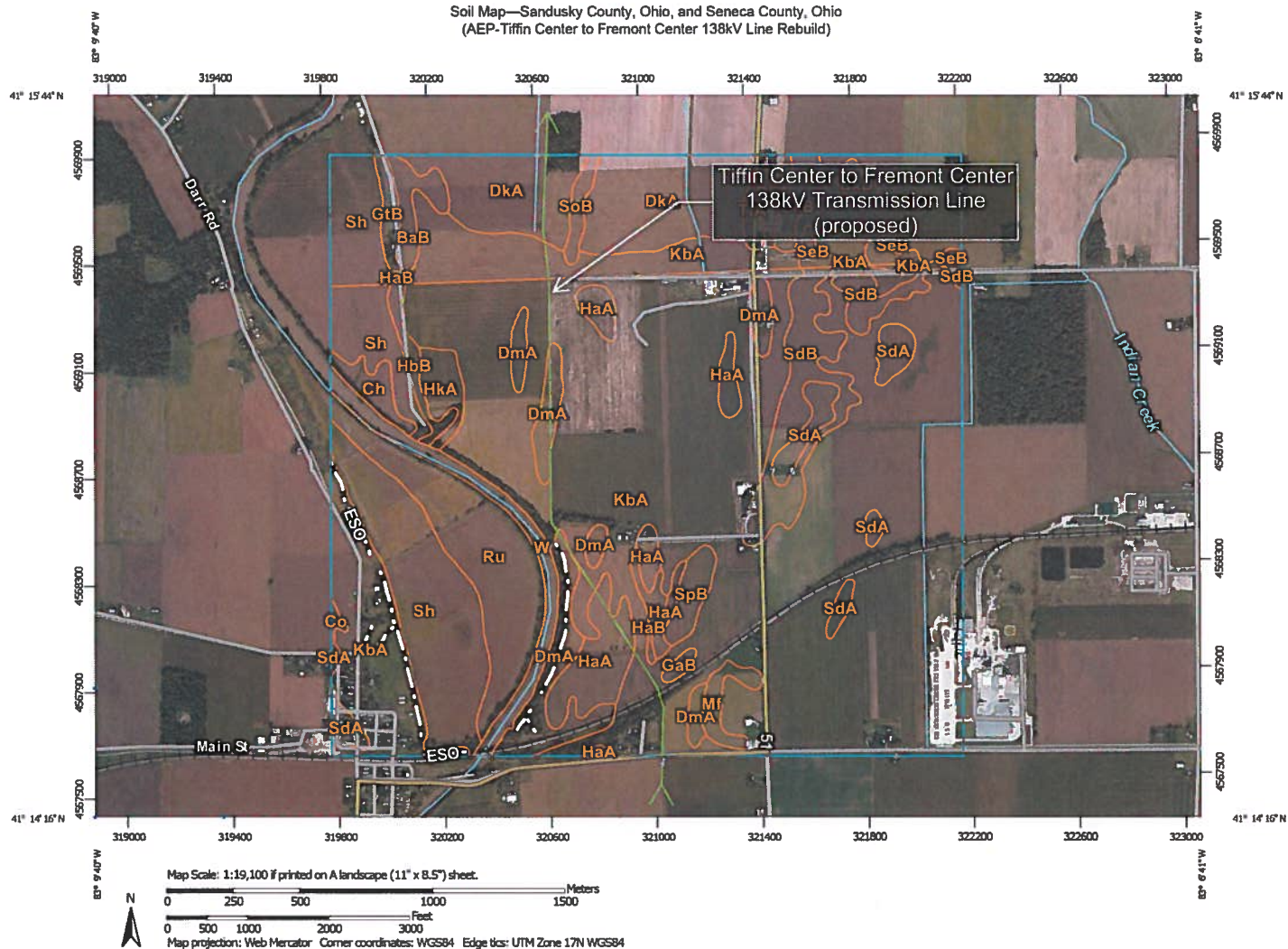
Web Soil Survey
National Cooperative Soil Survey

9/30/2013
Page 1 of 3

Map Unit Legend

| Seneca County, Ohio (OH147) | | | |
|------------------------------------|---|----------------|----------------|
| Map Unit Symbol | Map Unit Name | Acres in AOI | Percent of AOI |
| BdB | Belmore loam, 2 to 6 percent slopes | 0.2 | 0.0% |
| BfF2 | Belmore-Morley complex, 18 to 50 percent slopes, eroded | 41.2 | 3.3% |
| Co | Colwood silt loam | 32.1 | 2.6% |
| DmA | Digby loam, 1 to 4 percent slopes | 68.2 | 5.4% |
| GaA | Gallman loam, 0 to 2 percent slopes | 126.0 | 10.1% |
| GaB | Gallman loam, 2 to 6 percent slopes | 22.3 | 1.8% |
| HaA | Haney loam, 0 to 2 percent slopes | 20.3 | 1.6% |
| HaB | Haney loam, 2 to 6 percent slopes | 10.9 | 0.9% |
| HkA | Haskins loam, 0 to 2 percent slopes | 10.9 | 0.9% |
| HkB | Haskins loam, 2 to 6 percent slopes | 4.8 | 0.4% |
| KbA | Kibbie fine sandy loam, 0 to 2 percent slopes | 646.7 | 51.6% |
| Mf | Millgrove loam | 10.1 | 0.8% |
| OpB | Oshtemo sandy loam, 2 to 6 percent slopes | 21.6 | 1.7% |
| RmB | Rawson loam, 2 to 6 percent slopes | 11.6 | 0.9% |
| Ru | Ross silt loam, occasionally flooded | 120.2 | 9.6% |
| SdA | Seward loamy fine sand, 0 to 2 percent slopes | 23.7 | 1.9% |
| Sh | Shoals silt loam, frequently flooded | 41.5 | 3.3% |
| W | Water | 40.2 | 3.2% |
| Totals for Area of Interest | | 1,252.6 | 100.0% |

Soil Map—Sandusky County, Ohio, and Seneca County, Ohio
(AEP-Tiffin Center to Fremont Center 138kV Line Rebuild)



Natural Resources
Conservation Service

Web Soil Survey
National Cooperative Soil Survey

9/30/2013
Page 1 of 4

Map Unit Legend

| Sandusky County, Ohio (OH143) | | | |
|--------------------------------|---|--------------|----------------|
| Map Unit Symbol | Map Unit Name | Acres in AOI | Percent of AOI |
| BaB | Belmore loam, 2 to 6 percent slopes | 11.1 | 0.8% |
| BkB | Bixler loamy fine sand, 2 to 6 percent slopes | 13.5 | 1.0% |
| DkA | Dixboro-Kibbie complex, 0 to 2 percent slopes | 141.4 | 10.6% |
| GtB | Glenford silt loam, 2 to 6 percent slopes | 5.7 | 0.4% |
| HaB | Haskins sandy loam, 1 to 4 percent slopes | 0.6 | 0.0% |
| KbA | Kibbie fine sandy loam, 0 to 2 percent slopes | 50.7 | 3.8% |
| SeB | Seward loamy fine sand, 2 to 6 percent slopes | 9.0 | 0.7% |
| Sh | Shoals silt loam, frequently flooded | 24.1 | 1.8% |
| SoB | Spinks fine sand, 2 to 6 percent slopes | 5.5 | 0.4% |
| TfA | Tedrow-Dixboro complex, 0 to 2 percent slopes | 5.5 | 0.4% |
| Subtotals for Soil Survey Area | | 267.1 | 20.0% |
| Totals for Area of Interest | | 1,336.6 | 100.0% |

| Seneca County, Ohio (OH147) | | | |
|-----------------------------|---|--------------|----------------|
| Map Unit Symbol | Map Unit Name | Acres in AOI | Percent of AOI |
| Ch | Chagrin silt loam, occasionally flooded | 8.6 | 0.6% |
| Co | Colwood silt loam | 1.1 | 0.1% |
| DmA | Digby loam, 1 to 4 percent slopes | 47.4 | 3.5% |
| GaB | Gallman loam, 2 to 6 percent slopes | 2.1 | 0.2% |
| HaA | Haney loam, 0 to 2 percent slopes | 40.9 | 3.1% |
| HaB | Haney loam, 2 to 6 percent slopes | 4.4 | 0.3% |
| HbB | Haskins sandy loam, 1 to 4 percent slopes | 7.4 | 0.6% |
| HkA | Haskins loam, 0 to 2 percent slopes | 10.3 | 0.8% |
| KbA | Kibbie fine sandy loam, 0 to 2 percent slopes | 673.8 | 50.4% |
| Mf | Millgrove loam | 7.7 | 0.6% |

| Seneca County, Ohio (OH147) | | | |
|--------------------------------|---|--------------|----------------|
| Map Unit Symbol | Map Unit Name | Acres in AOI | Percent of AOI |
| Ru | Ross silt loam, occasionally flooded | 64.9 | 4.9% |
| SdA | Seward loamy fine sand, 0 to 2 percent slopes | 23.4 | 1.7% |
| SdB | Seward loamy fine sand, 2 to 6 percent slopes | 47.5 | 3.6% |
| Sh | Shoals silt loam, frequently flooded | 96.3 | 7.2% |
| SpB | Spinks loamy sand, 2 to 6 percent slopes | 9.1 | 0.7% |
| W | Water | 24.5 | 1.8% |
| Subtotals for Soil Survey Area | | 1,069.4 | 80.0% |
| Totals for Area of Interest | | 1,336.6 | 100.0% |

Soil Map—Sandusky County, Ohio
(AEP-Tiffin Center to Fremont Center 138kV Line Rebuild)



Natural Resources
Conservation Service

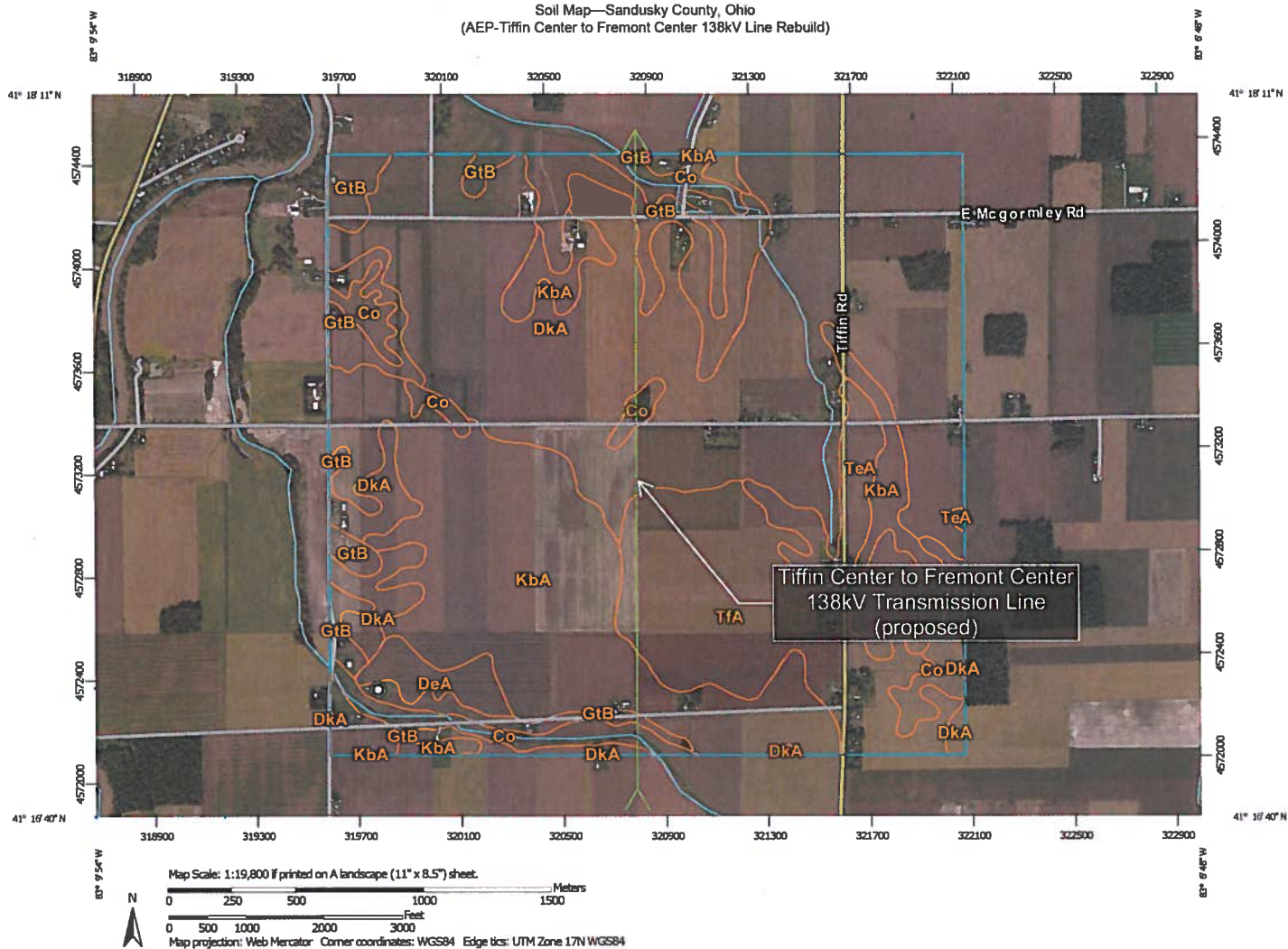
Web Soil Survey
National Cooperative Soil Survey

9/30/2013
Page 1 of 3

Map Unit Legend

| Sandusky County, Ohio (OH143) | | | |
|------------------------------------|---|----------------|----------------|
| Map Unit Symbol | Map Unit Name | Acres in AOI | Percent of AOI |
| BaB | Belmore loam, 2 to 6 percent slopes | 10.4 | 0.7% |
| BkB | Bixler loamy fine sand, 2 to 6 percent slopes | 3.7 | 0.3% |
| Co | Colwood fine sandy loam | 30.2 | 2.1% |
| DkA | Dixboro-Kibbie complex, 0 to 2 percent slopes | 889.3 | 62.3% |
| Do | Dumps | 3.0 | 0.2% |
| GtB | Glenford silt loam, 2 to 6 percent slopes | 71.3 | 5.0% |
| KbA | Kibbie fine sandy loam, 0 to 2 percent slopes | 200.1 | 14.0% |
| Rs | Rosburg silt loam, occasionally flooded | 28.6 | 2.0% |
| Sh | Shoals silt loam, frequently flooded | 9.3 | 0.6% |
| SoB | Spinks fine sand, 2 to 6 percent slopes | 33.6 | 2.4% |
| TfA | Tedrow-Dixboro complex, 0 to 2 percent slopes | 138.1 | 9.7% |
| W | Water | 9.1 | 0.6% |
| Totals for Area of Interest | | 1,426.7 | 100.0% |

Soil Map—Sandusky County, Ohio
(AEP-Tiffin Center to Fremont Center 138kV Line Rebuild)



Natural Resources
Conservation Service

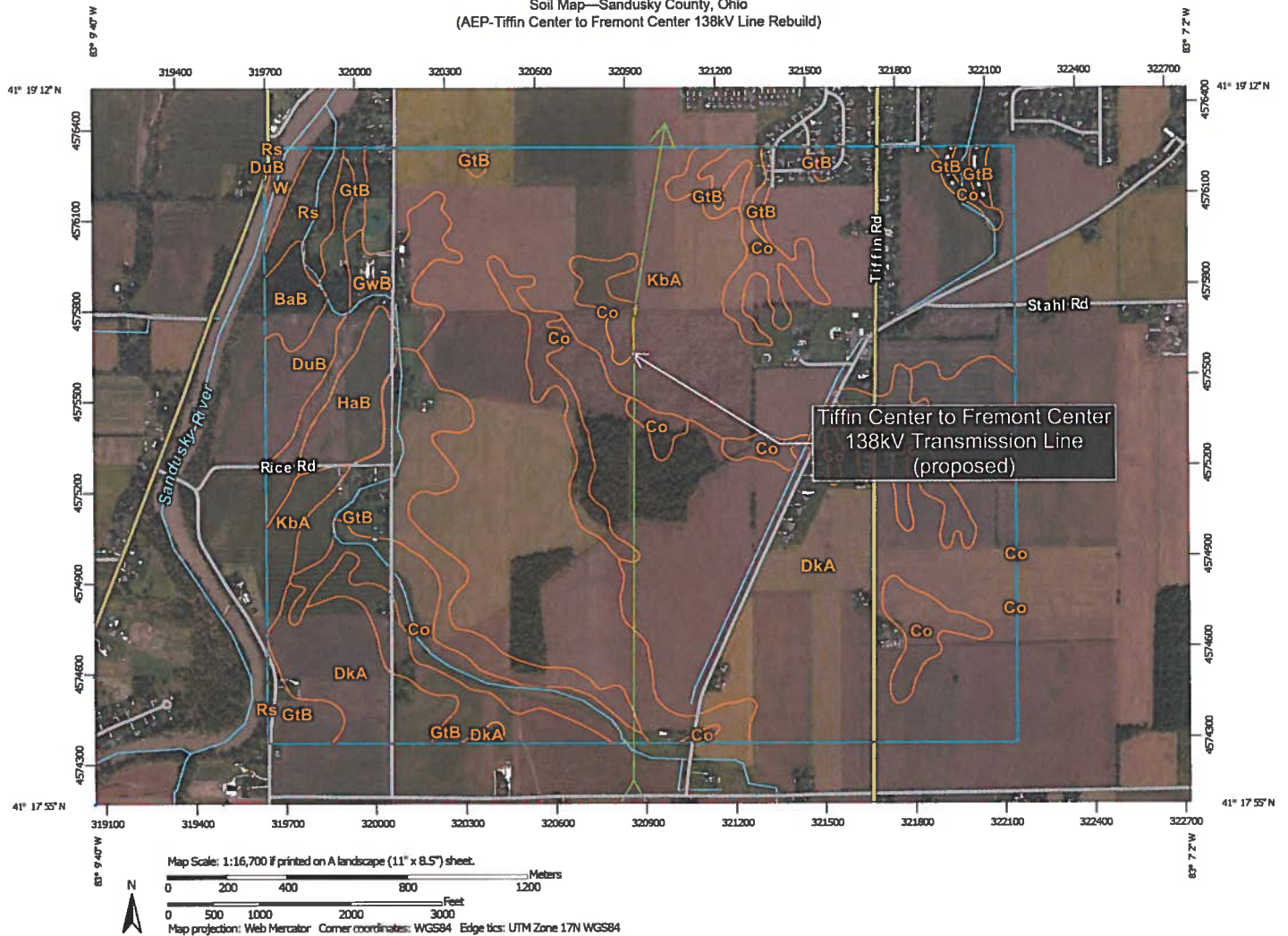
Web Soil Survey
National Cooperative Soil Survey

9/30/2013
Page 1 of 3

Map Unit Legend

| Sandusky County, Ohio (OH143) | | | |
|-------------------------------|---|--------------|----------------|
| Map Unit Symbol | Map Unit Name | Acres in AOI | Percent of AOI |
| Co | Colwood fine sandy loam | 81.9 | 5.7% |
| DeA | Del Rey silt loam, 0 to 2 percent slopes | 22.0 | 1.5% |
| DkA | Dixboro-Kibbie complex, 0 to 2 percent slopes | 600.0 | 41.7% |
| GtB | Glenford silt loam, 2 to 6 percent slopes | 152.6 | 10.6% |
| KbA | Kibbie fine sandy loam, 0 to 2 percent slopes | 333.3 | 23.2% |
| TeA | Tedrow loamy fine sand, 0 to 2 percent slopes | 76.1 | 5.3% |
| TfA | Tedrow-Dixboro complex, 0 to 2 percent slopes | 172.5 | 12.0% |
| Totals for Area of Interest | | 1,438.4 | 100.0% |

Soil Map—Sandusky County, Ohio
(AEP-Tiffin Center to Fremont Center 138kV Line Rebuild)



Map Unit Legend

| Sandusky County, Ohio (OH143) | | | |
|------------------------------------|---|----------------|----------------|
| Map Unit Symbol | Map Unit Name | Acres in AOI | Percent of AOI |
| BaB | Belmore loam, 2 to 6 percent slopes | 11.8 | 1.0% |
| Co | Colwood fine sandy loam | 139.0 | 11.4% |
| DkA | Dixboro-Kibbie complex, 0 to 2 percent slopes | 363.4 | 29.7% |
| DuB | Dunbridge sandy loam, 1 to 4 percent slopes | 25.3 | 2.1% |
| GtB | Glenford silt loam, 2 to 6 percent slopes | 121.3 | 9.9% |
| GwB | Glynwood silt loam, 2 to 6 percent slopes | 35.1 | 2.9% |
| HaB | Haskins sandy loam, 1 to 4 percent slopes | 22.5 | 1.8% |
| KbA | Kibbie fine sandy loam, 0 to 2 percent slopes | 483.4 | 39.5% |
| Rs | Rosburg silt loam, occasionally flooded | 15.5 | 1.3% |
| W | Water | 5.7 | 0.5% |
| Totals for Area of Interest | | 1,222.9 | 100.0% |

This foregoing document was electronically filed with the Public Utilities

Commission of Ohio Docketing Information System on

3/7/2014 2:50:13 PM

in

Case No(s). 14-0143-EL-BLN

Summary: Letter of Notification Tiffin Center Fremont Center (Part 5 of 6) electronically filed by Mr. Matthew J Satterwhite on behalf of AEP Ohio Transmission Company