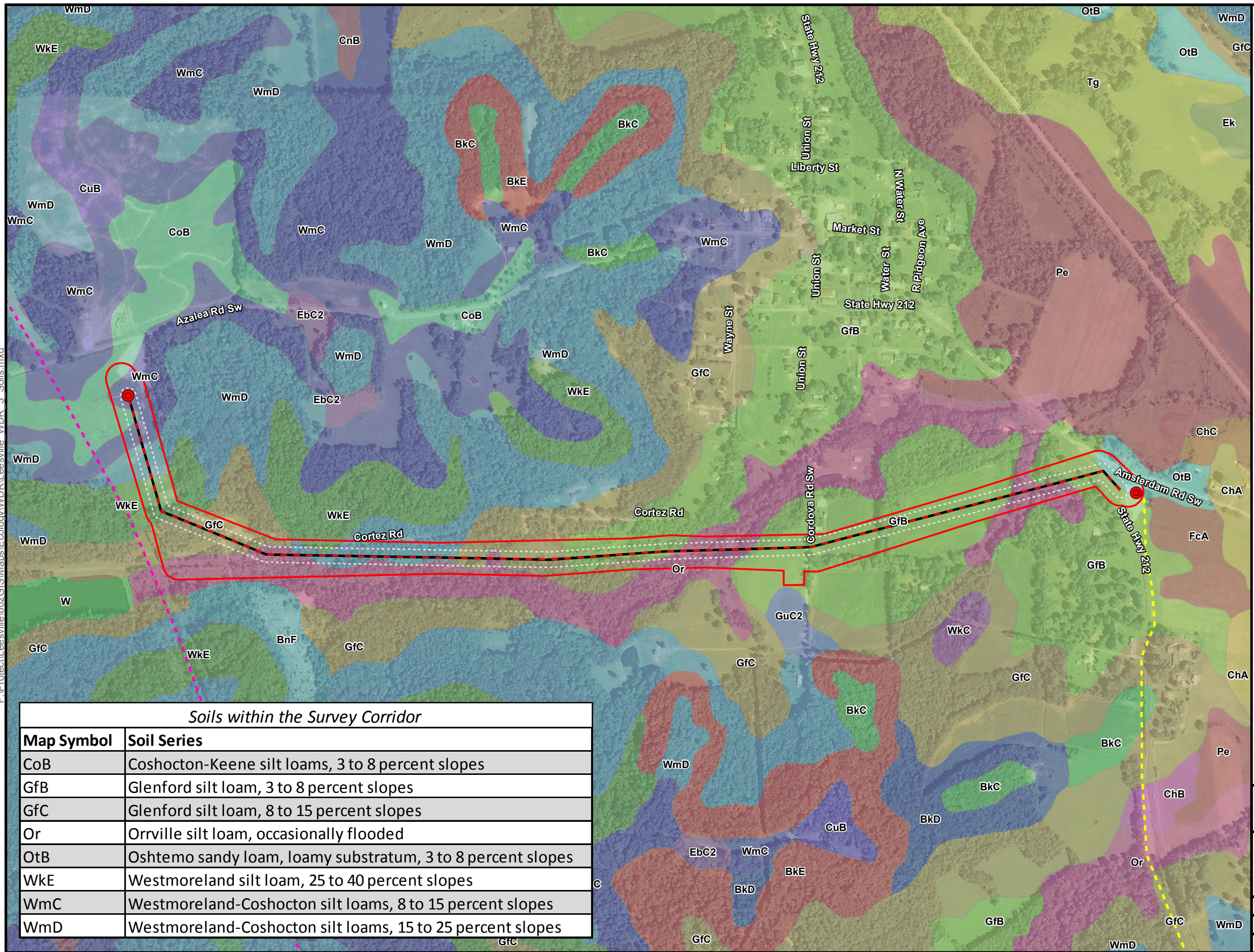


F:\Project\Leesville\602GIS\Maps\Ecology\WDR\Leesville WDR 3 Soils.mxd



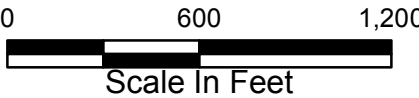
LEGEND:

- Substation
- Proposed Route
- 100-Foot Right-of-Way
- 200-Foot Survey Corridor
- Existing 69 kV Transmission Line
- Existing Gas Pipeline

Soil Series Boundaries

BkC	CuB	OtB
BkD	EbB	Pe
BkE	EbC2	RgC
BnF	Ek	Tg
ChA	FcA	W
ChB	GfB	WkC
ChC	GfC	WkE
CnB	GuC2	WmC
CoB	Or	WmD

BASE MAP SOURCE:
National Agricultural Imagery Program, 2013
LOCATOR MAP SOURCE:
ESRI World Street Map, 2013
SOILS DATA SOURCE:
Soil Survey Staff, Natural Resources
Conservation Service, United States
Department of Agriculture. Soil Survey
Geographic (SSURGO) Database
for Carroll County, Ohio.



AEP | New 69kV service to
Utica East Ohio Midstream,
LLC (Momentum) in Leesville, OH

FIGURE 3
SOILS MAP

Soils within the Survey Corridor	
Map Symbol	Soil Series
CoB	Coshocton-Keene silt loams, 3 to 8 percent slopes
GfB	Glenford silt loam, 3 to 8 percent slopes
GfC	Glenford silt loam, 8 to 15 percent slopes
Or	Orrville silt loam, occasionally flooded
OtB	Oshtemo sandy loam, loamy substratum, 3 to 8 percent slopes
WkE	Westmoreland silt loam, 25 to 40 percent slopes
WmC	Westmoreland-Coshocton silt loams, 8 to 15 percent slopes
WmD	Westmoreland-Coshocton silt loams, 15 to 25 percent slopes

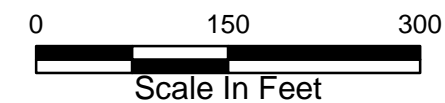
PN: 485272	DATE: 2/5/2014
CREATED BY: AC	
REVIEWED BY: MD	

F:\Project\Leesville\602GIS\Maps\Ecology\WDR\Leesville WDR 4 Wet Waterbodies.mxd



LEGEND:

- ✕ Structure
- Substation
- Proposed Route
- - - 100-Foot Right-of-Way
- ▭ 200-Foot Survey Corridor
- - - Existing 69 kV Transmission Line
- - - Existing Gas Pipeline
- ▼▼▼ Open_Ended_Line
- Delineated Stream
- ▭ Delineated Pond
- Delineated Wetlands**
- ▨ Palustrine Forested (PFO)
- ▨ Palustrine Scrub-Shrub (PSS)
- ▨ Palustrine Emergent (PEM)
- Data Points**
- Wetland
- Upland



BASE MAP SOURCE:
Ohio Statewide Imagery Program (OSIP), 2007
Carroll County



New 69kV service to
Utica East Ohio Midstream,
LLC (Momentum) in Leesville, OH

FIGURE 4A
WETLAND AND WATERBODY
DETERMINATION MAP

PN: 485272

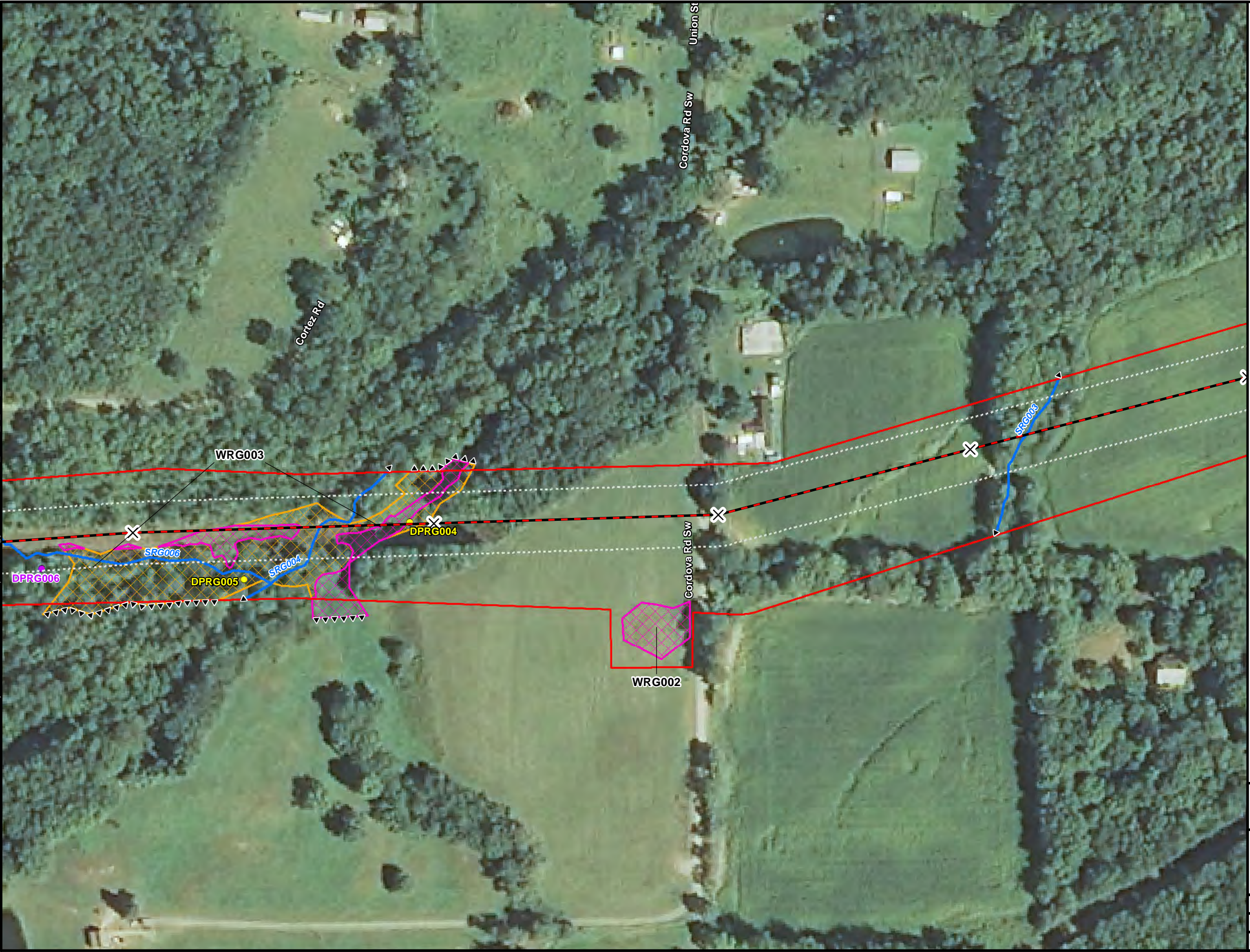
DATE: 2/6/2014

CREATED BY: AC

REVIEWED BY: MD

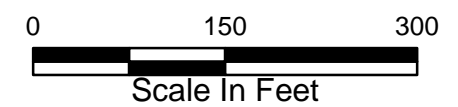


F:\Project\Leesville\602GIS\Maps\Ecology\WDR\Leesville WDR 4 Wet Waterbodies.mxd



LEGEND:

- ✕ Structure
- Substation
- Proposed Route
- - - 100-Foot Right-of-Way
- ▭ 200-Foot Survey Corridor
- - - Existing 69 kV Transmission Line
- - - Existing Gas Pipeline
- ▼▼▼ Open_Ended_Line
- Delineated Stream
- Delineated Pond
- Delineated Wetlands**
- ▨ Palustrine Forested (PFO)
- ▨ Palustrine Scrub-Shrub (PSS)
- ▨ Palustrine Emergent (PEM)
- Data Points**
- Wetland
- Upland




BASE MAP SOURCE:
Ohio Statewide Imagery Program (OSIP), 2007
Carroll County



New 69kV service to
Utica East Ohio Midstream,
LLC (Momentum) in Leesville, OH

FIGURE 4B
WETLAND AND WATERBODY
DETERMINATION MAP

PN: 485272	DATE: 2/6/2014
CREATED BY: AC	
REVIEWED BY: MD	

F:\Project\Leesville\602GIS\Maps\Ecology\WDR\Leesville WDR 4 Wet Waterbodies.mxd



LEGEND:

- ✕ Structure
- Substation
- Proposed Route
- - - 100-Foot Right-of-Way
- ▭ 200-Foot Survey Corridor
- - - Existing 69 kV Transmission Line
- - - Existing Gas Pipeline
- ▼▼▼ Open_Ended_Line
- Delineated Stream
- ▭ Delineated Pond
- Delineated Wetlands**
 - ▨ Palustrine Forested (PFO)
 - ▨ Palustrine Scrub-Shrub (PSS)
 - ▨ Palustrine Emergent (PEM)
- Data Points**
 - Wetland
 - Upland

0 150 300
Scale In Feet

BASE MAP SOURCE:
Ohio Statewide Imagery Program (OSIP), 2007
Carroll County

AEP | New 69kV service to
Utica East Ohio Midstream,
LLC (Momentum) in Leesville, OH

FIGURE 4C
WETLAND AND WATERBODY
DETERMINATION MAP

PN: 485272	DATE: 2/6/2014
CREATED BY: AC	
REVIEWED BY: MD	

F:\Project\Leesville\602GIS\Maps\Ecology\WDR\Leesville WDR 4 Wet Waterbodies.mxd



LEGEND:

- ✕ Structure
- Substation
- Proposed Route
- ⋯ 100-Foot Right-of-Way
- ▭ 200-Foot Survey Corridor
- Existing 69 kV Transmission Line
- Existing Gas Pipeline
- ▼▼▼ Open_Ended_Line
- Delineated Stream
- ▭ Delineated Pond
- Delineated Wetlands**
 - ▨ Palustrine Forested (PFO)
 - ▨ Palustrine Scrub-Shrub (PSS)
 - ▨ Palustrine Emergent (PEM)
- Data Points**
 - Wetland
 - Upland

0 150 300
Scale In Feet

BASE MAP SOURCE:
Ohio Statewide Imagery Program (OSIP), 2007
Carroll County



New 69kV service to
Utica East Ohio Midstream,
LLC (Momentum) in Leesville, OH

FIGURE 4D WETLAND AND WATERBODY DETERMINATION MAP

PN: 485272

DATE: 2/6/2014

CREATED BY: AC

REVIEWED BY: MD



Appendix A

Site Photographs



Photo 1: Representative photo of PSS wetlands (WRG009) along the proposed transmission line looking northeast.



Photo 2: Representative photo of PEM wetlands (WRG001) along the proposed transmission line looking southeast.



Photo 3: Representative photo of riparian forest habitat along the proposed transmission line looking northwest.



Photo 4: Representative photo of mowed turf grass along the proposed transmission line looking southeast toward the existing substation.



Photo 5: Representative photo of agricultural fields along the proposed transmission line looking west.



Photo 6: Representative photo of new field habitat along the proposed transmission line looking west.



Photo 7: Representative photo of existing transmission line right-of-way looking east.



Photo 8: Representative photo of ephemeral streams (SRG006) along the proposed transmission line looking northwest.



Photo 9: Representative photo of perennial streams (SRG004) along the proposed transmission line looking northeast.



Photo 10: Photo of the pond (PMB001) along the proposed transmission line looking southwest.



CH2M HILL
10123 Alliance Road
Suite 300
Cincinnati, OH 45242
Tel 513.530.5520
Fax 513.530.5541

February 5, 2014

Greg Schneider
Ohio Natural Heritage Program
Ohio Department of Natural Resources
2045 Morse Rd., Bldg. G-3
Columbus, Ohio 43229-6693

**Subject: Threatened and Endangered Species Habitat Assessment
American Electric Power Company, Inc., Proposed 69 kV Service to Momentum in
Leesville, Ohio Project, Carroll County, Ohio**

Dear Mr. Schneider:

On behalf of American Electric Power Company, Inc. (AEP), CH2M HILL Engineers, Inc. (CH2M HILL) requests comments from the Ohio Department of Natural Resources (ODNR) on the effect of the proposed new 69 kilovolt (kV) service to the Utica East Ohio Midstream LLC (Momentum) facility in Leesville, Ohio (the Project) on state-listed threatened and endangered species and conservancy areas. The Project involves installation of 1.35 miles of electric transmission line designed to a 138 kV specification, but energized to 69 kV, to serve the Momentum Station in Leesville, Carroll County (Attachment 1; Figure 1). AEP is working with Momentum to use the existing right-of-way (ROW) from Momentum's facility towards the existing AEP Ohio Leesville Station for construction of the Project.

1.0 Background

AEP retained CH2M HILL to review available information and assess threatened and endangered species habitat within the Project area. CH2M HILL reviewed the U.S. Fish and Wildlife Service (USFWS) Ohio Ecological Services Office website (USFWS, 2013) for information on federally listed species known to occur, or potentially occur, in Carroll County, Ohio. CH2M HILL also reviewed the ODNR Division of Wildlife (DOW) Natural Heritage Database State-listed Species for Carroll County (ODNR DOW, 2012) and the relevant U.S. Geological Survey (USGS) topographic maps (Bowerston; Attachment 1; Figure 1).

CH2M HILL submitted a Natural Heritage Database data request form and mapping to the ODNR DOW by email on January 2, 2014, to solicit information on known occurrences of federally listed and state listed species within a 1.5-mile radius of the Project area. Through this request, CH2M HILL obtained Geographic Information System (GIS) data on January 8, 2014, that outlined known records of state and federally listed species within the Project area (Schneider, 2014, personal communication). The ODNR DOW also provided a response letter, which is included as Attachment 2 and discussed in further detail in the following sections. The following summarizes the results of the January 2014 ODNR coordination, also provided in Figure 2 of Attachment 1, which reflects the most current species records available from ODNR.

This foregoing document was electronically filed with the Public Utilities

Commission of Ohio Docketing Information System on

2/7/2014 4:30:17 PM

in

Case No(s). 14-0195-EL-BLN

Summary: Letter of Notification Azalea 138 kV Extension East Project (Part 2 of 5)
electronically filed by Mr. Yazen Alami on behalf of Ohio Power Company