

Figures – Section 4906-13-03

- Figure 03-1 – Carroll County Site Selection Attributes
- Figure 03-2 – Site Selection Constraints within 1 Mile of Facility Area

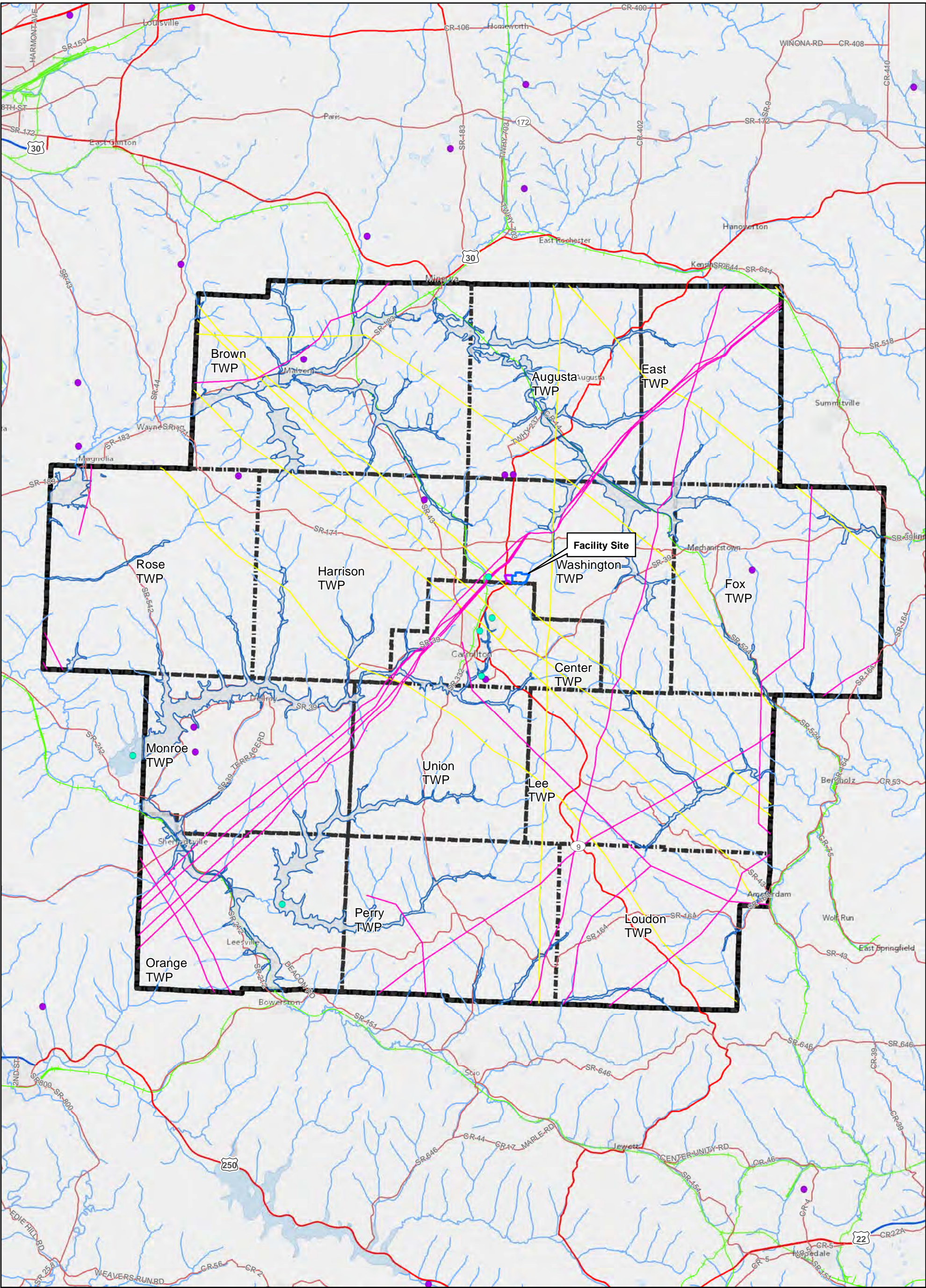


Figure 03-1

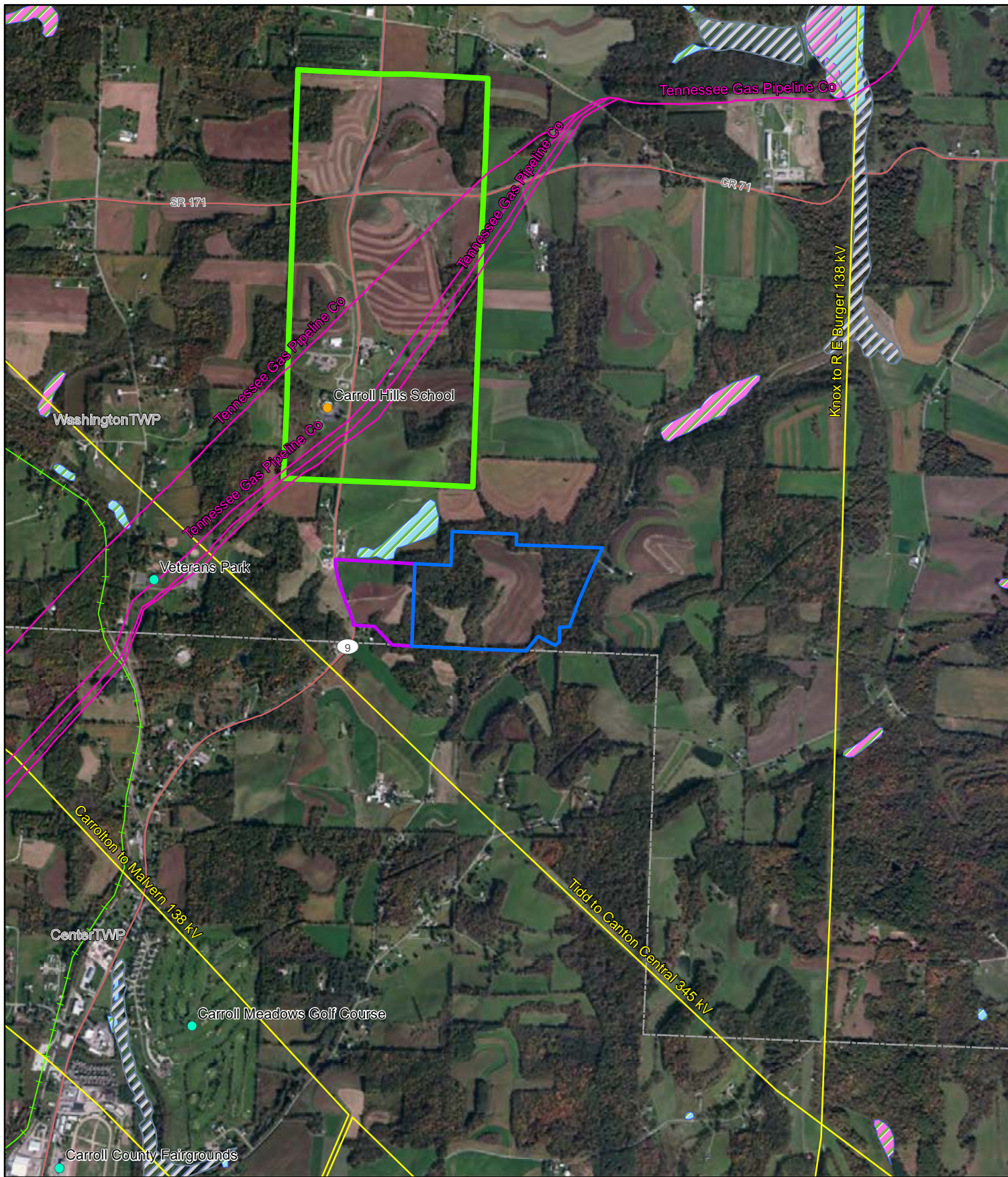
Carroll County Site Selection Attributes

Carroll County Energy
Carroll County, Ohio

Legend

Park/Recreation Area	River/Stream
Air Transportation Facility	Facility Site
Existing Natural Gas Pipeline	Construction Laydown Area
Existing Electric Transmission Line	100-year Floodplain
Primary Limited Access or Interstate	Open Water
Primary US and State Highway	Township Boundary
Secondary State and County	Carroll County Boundary
Railroad	

OVERVIEW MAP



Carroll County
ENERGY



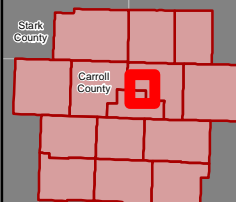
0 0.125 0.25
Miles

Figure 03-2
Site Selection
Constraints within
1 Mile of Facility Area

Carroll County Energy
Carroll County, Ohio

- | | |
|---|---|
| ● School | Freshwater Emergent Wetland |
| ● Park/Recreation | Freshwater Forested/Shrub Wetland |
| Existing Electric Transmission Line | 100-year Floodplain |
| Existing Natural Gas Pipeline | Township Boundary |
| Railroads | Carroll County Community Improvement Commission |
| Facility Site | Construction Laydown Area |

OVERVIEW MAP



This foregoing document was electronically filed with the Public Utilities

Commission of Ohio Docketing Information System on

11/15/2013 1:11:00 PM

in

Case No(s). 13-1752-EL-BGN

Summary: Application Figures 03-1 through 03-2. electronically filed by Ms. Miranda R Leppla
on behalf of Carroll County Energy LLC