

Case No. 13-1293-EL-REN
McKinley Presidential Library & Museum
Staff Interrogatories – Initial Set

Question 1: In section B of the application, the name of the facility owner representative should be a person's name.

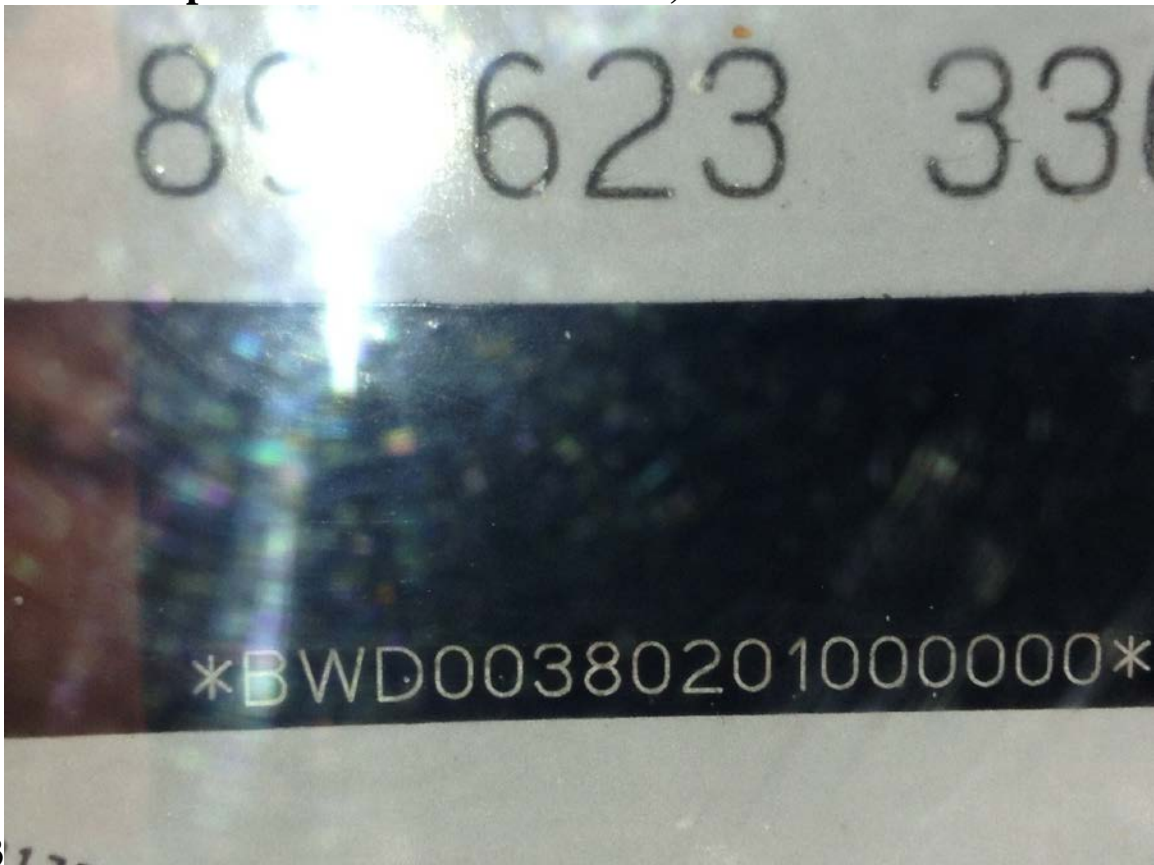
Answer 1: The Name – Joyce Yut, Stark County Historical Society

Question 2: In section I.1 the projected gross annual generation (MWh) is listed as 0.012246. PVWatts (http://mapserve3.nrel.gov/PVWatts_View/indices.html) lists 11,161 kWh or 11.161 MWh as the annual output for system. What is the correct projected gross annual generation (MWh)?

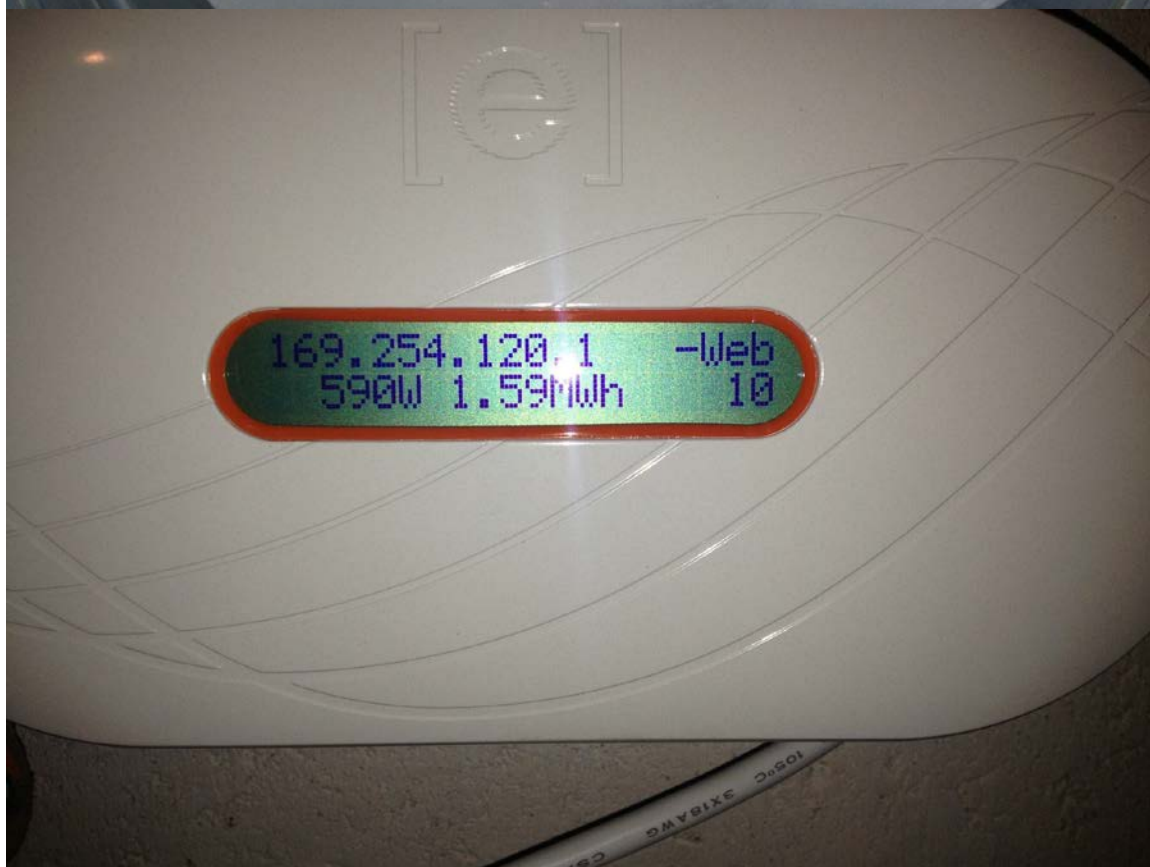
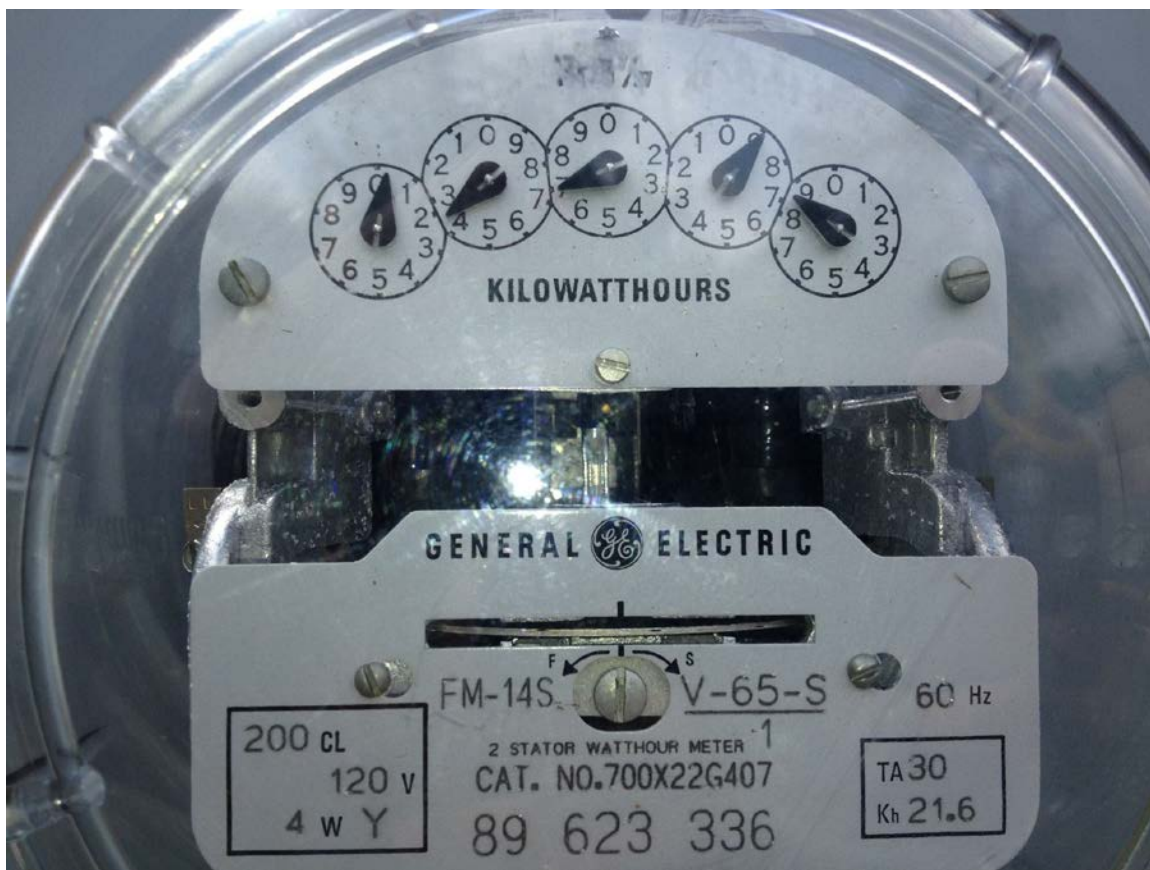
Answer 2: The Answer – 11.161 MWh

Question 3: In section N.1.e the meter reading and serial number are not clearly visible. Please submit a dated photo of the meter in which the meter reading and serial number are clearly visible.

Answer 3: The photos were taken June 11,



2013



This foregoing document was electronically filed with the Public Utilities

Commission of Ohio Docketing Information System on

6/12/2013 11:52:07 AM

in

Case No(s). 13-1293-EL-REN

Summary: Reply Case No. 13-1293-EL-REN McKinley Presidential Library & Museum Staff Interrogatories -- Initial Set Answers to 3 questions -- Photos attached electronically filed by Stephen P Kobilarcsik on behalf of Koby Electric, Inc.