

Data Source(s): Westwood Field GPS Data (2013), Paulding County 2012 DOQ (Accessed 2013)

Northwest Ohio Wind Project

Paulding County, Ohio

Wetland Delineation
Boundary Map

EXHIBIT 8 A

Legend

- () Upland Sample Point
- A Wetland Sample Point
- Exhibit 8 Panel ID
- Current Proposed Corridor
- Overall Wetland Delineation Corridor
- Overall Project Boundary
- Non-Wetland Watercourse
- Type 2 Wetland within Creek
- Type 2 Wetland within Ditch
- Type 7 Wooded Wetland



Westwood Professional Services, Inc.
7699 Anagram Drive
Eden Prairie, MN 55344

PHONE 952-937-5150
FAX 952-937-5822
TOLL FREE 1-888-937-5150

www.westwoodps.com



Data Source(s): Westwood Field GPS Data (2013), Paulding County 2012 DOQ (Accessed 2013)



Westwood Professional Services, Inc.
7699 Anagram Drive
Eden Prairie, MN 55344

PHONE 952-937-5150
FAX 952-937-5822
TOLL FREE 1-888-937-5150
www.westwoodps.com

Legend

- () Upland Sample Point
- A Wetland Sample Point
- Exhibit 8 Panel ID
- Current Proposed Corridor
- Overall Wetland Delineation Corridor
- Overall Project Boundary
- Non-Wetland Watercourse
- Type 2 Wetland within Creek
- Type 2 Wetland within Ditch
- Type 7 Wooded Wetland

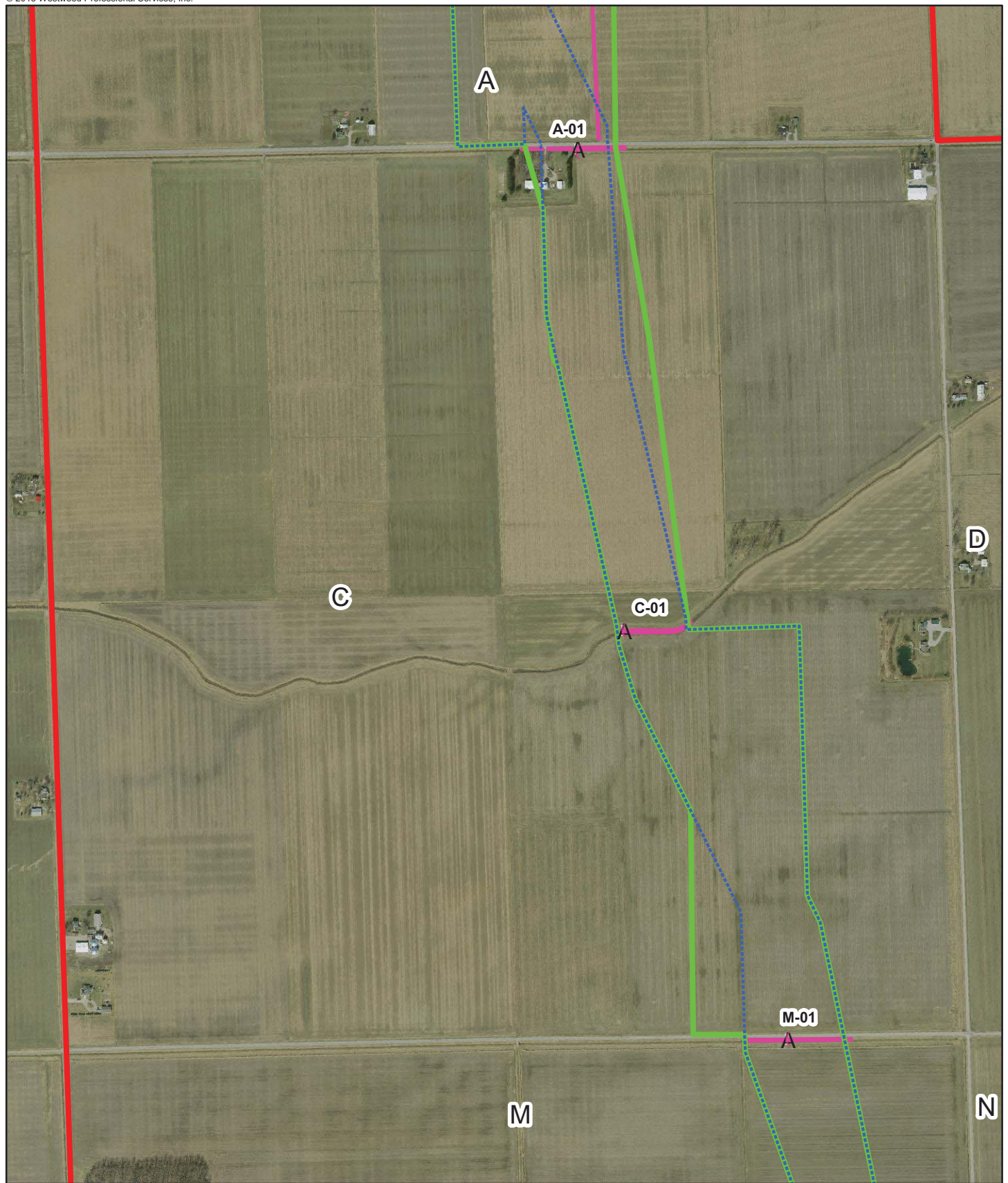
Northwest Ohio Wind Project

Paulding County, Ohio

Wetland Delineation Boundary Map

EXHIBIT 8 B





Data Source(s): Westwood Field GPS Data (2013), Paulding County 2012 DOQ (Accessed 2013)

Legend

- () Upland Sample Point
- A Wetland Sample Point
- Exhibit 8 Panel ID
- Current Proposed Corridor
- Overall Wetland Delineation Corridor
- Overall Project Boundary
- Non-Wetland Watercourse
- Type 2 Wetland within Creek
- Type 2 Wetland within Ditch
- Type 7 Wooded Wetland

Northwest Ohio Wind Project

Paulding County, Ohio

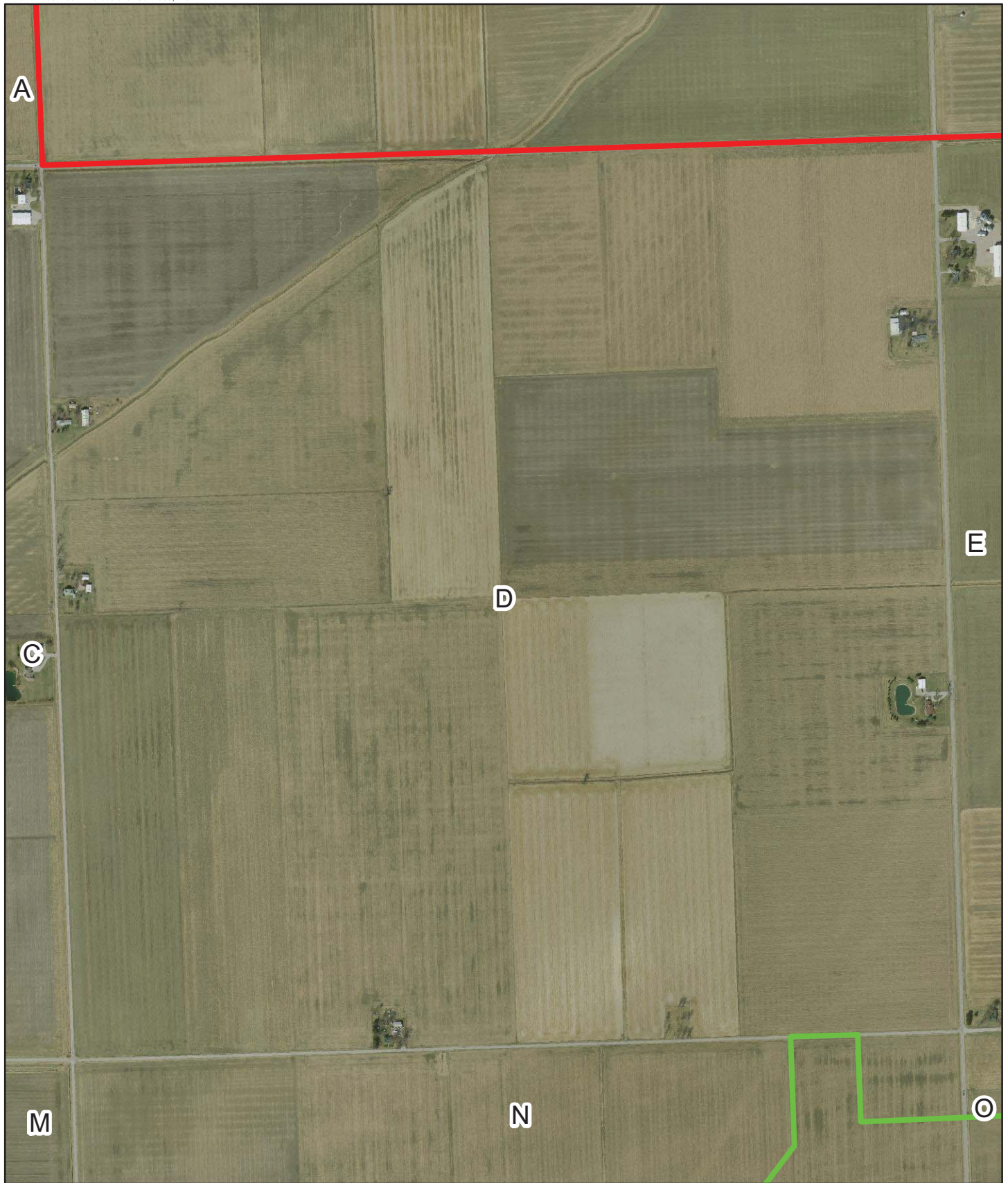
Wetland Delineation Boundary Map

EXHIBIT 8 C



Westwood Professional Services, Inc.
7699 Anagram Drive
Eden Prairie, MN 55344

PHONE 952-937-5150
FAX 952-937-5822
TOLL FREE 1-888-937-5150
www.westwoodps.com



Data Source(s): Westwood Field GPS Data (2013), Paulding County 2012 DOQ (Accessed 2013)

Northwest Ohio Wind Project

Paulding County, Ohio

Wetland Delineation Boundary Map

EXHIBIT 8 D

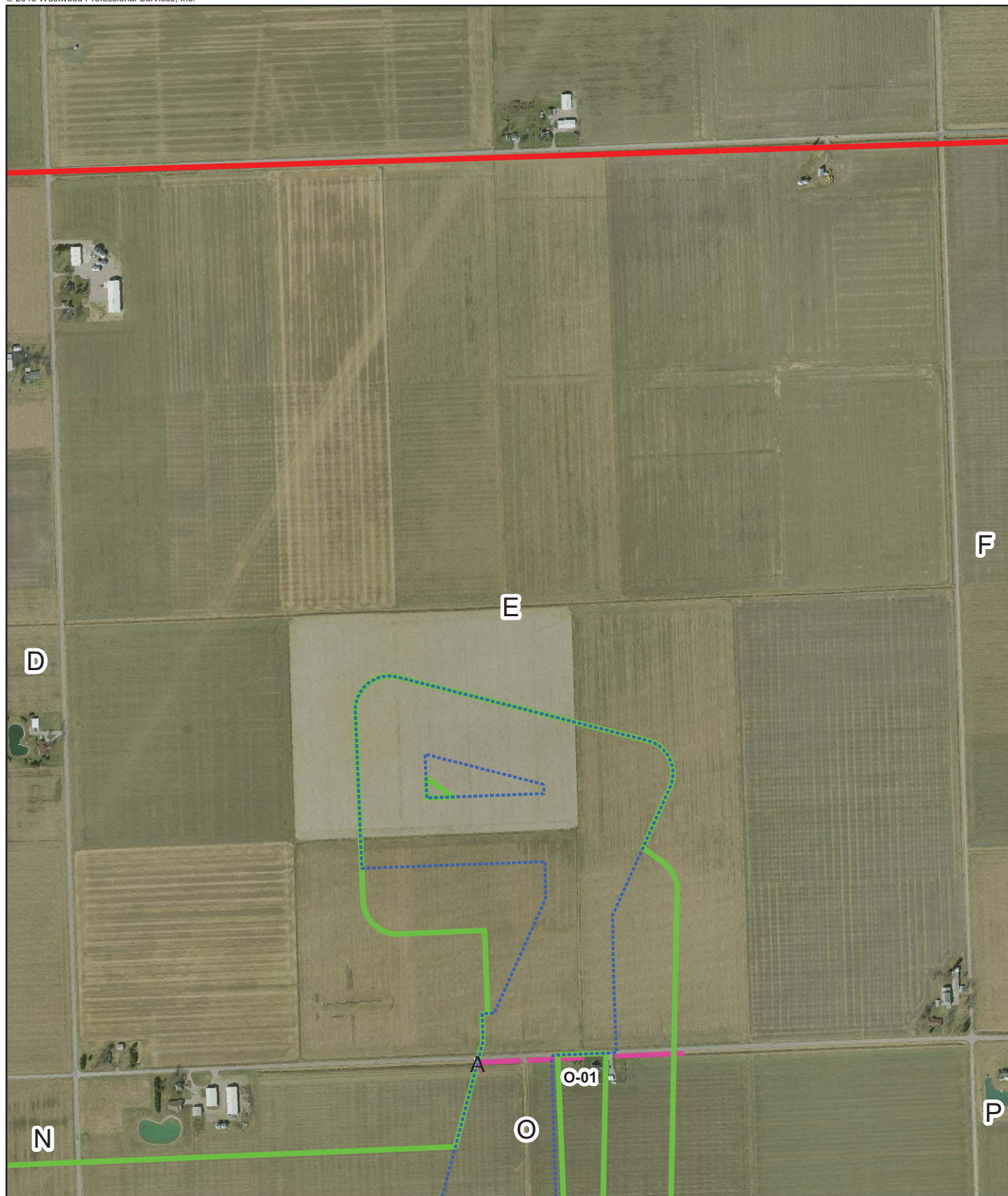
Legend

- () Upland Sample Point
- A Wetland Sample Point
- Exhibit 8 Panel ID
- Current Proposed Corridor
- Overall Wetland Delineation Corridor
- Overall Project Boundary
- Non-Wetland Watercourse
- Type 2 Wetland within Creek
- Type 2 Wetland within Ditch
- Type 7 Wooded Wetland



Westwood Professional Services, Inc.
7699 Anagram Drive
Eden Prairie, MN 55344

PHONE 952-937-5150
FAX 952-937-5822
TOLL FREE 1-888-937-5150
www.westwoodps.com



Data Source(s): Westwood Field GPS Data (2013), Paulding County 2012 DOQ (Accessed 2013)



Westwood Professional Services, Inc.
7699 Anagram Drive
Eden Prairie, MN 55344

PHONE 952-937-5150
FAX 952-937-5822
TOLL FREE 1-888-937-5150

www.westwoodps.com

Legend

- () Upland Sample Point
- A Wetland Sample Point
- Exhibit 8 Panel ID
- Current Proposed Corridor
- Overall Wetland Delineation Corridor
- Overall Project Boundary
- Non-Wetland Watercourse
- Type 2 Wetland within Creek
- Type 2 Wetland within Ditch
- Type 7 Wooded Wetland

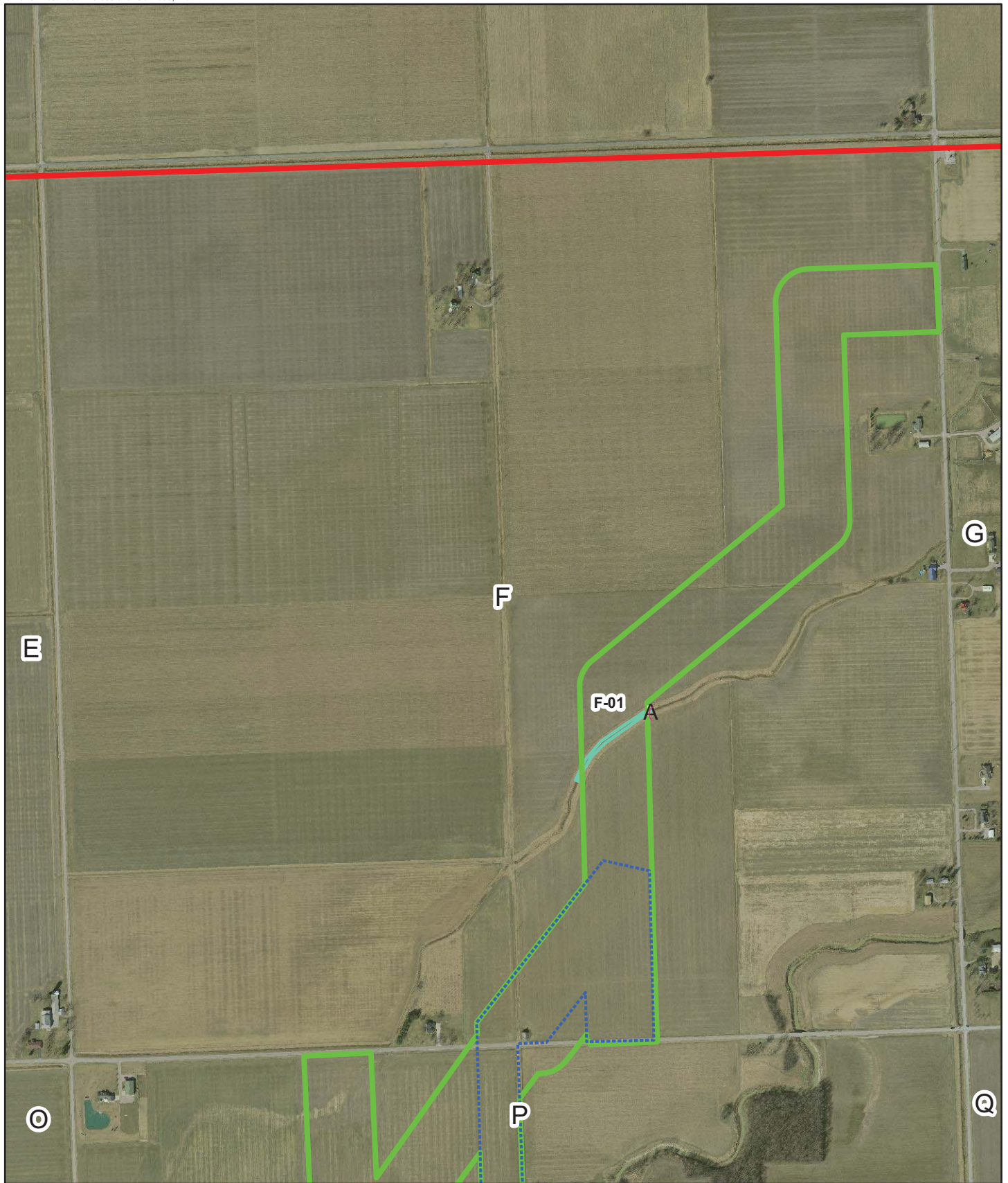
Northwest Ohio Wind Project

Paulding County, Ohio

Wetland Delineation Boundary Map



EXHIBIT 8 E



Data Source(s): Westwood Field GPS Data (2013), Paulding County 2012 DOQ (Accessed 2013)

Northwest Ohio Wind Project

Paulding County, Ohio

Wetland Delineation Boundary Map

EXHIBIT 8 F

Legend

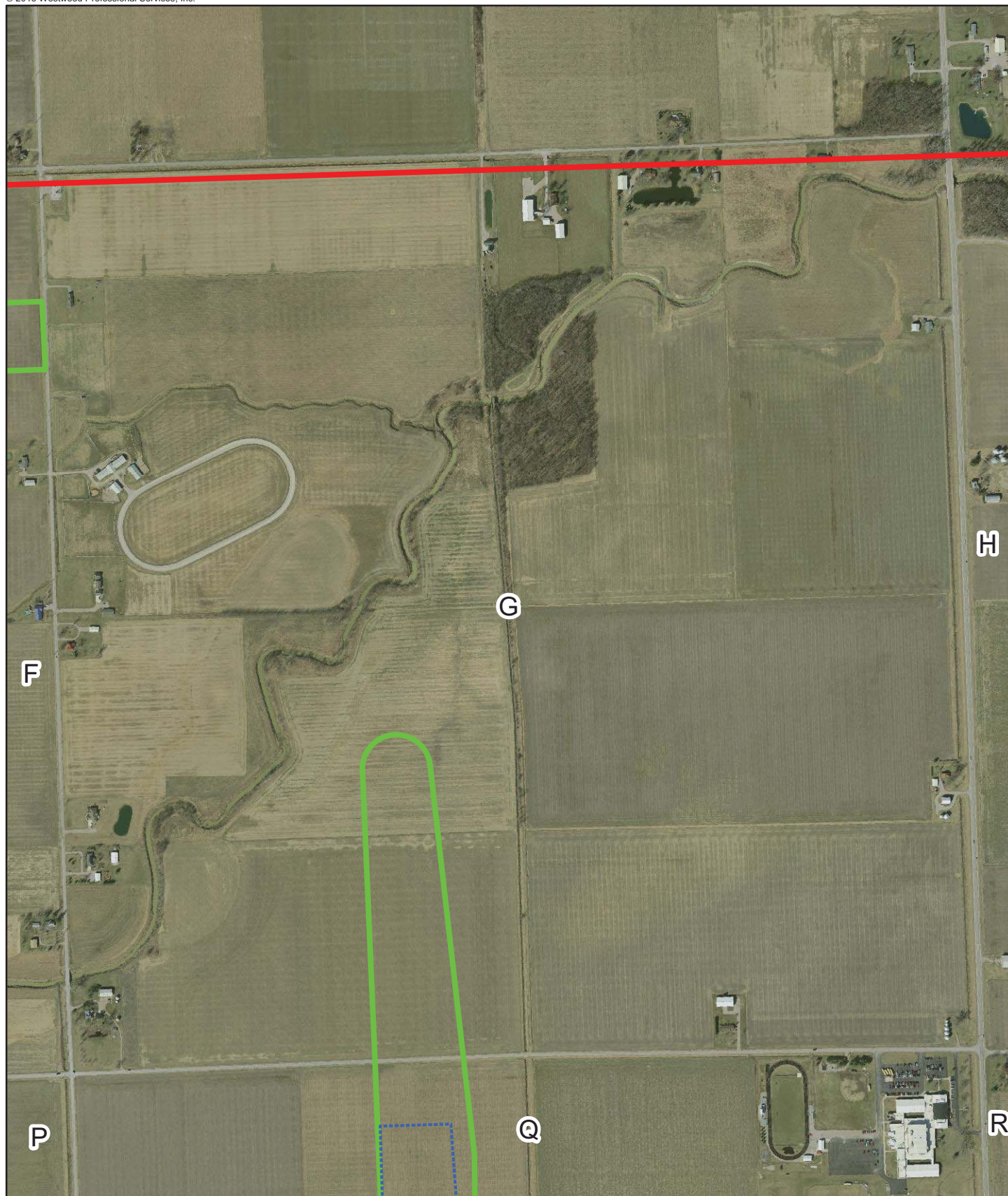
- () Upland Sample Point
- A Wetland Sample Point
- Exhibit 8 Panel ID
- Current Proposed Corridor
- Overall Wetland Delineation Corridor
- Overall Project Boundary
- Non-Wetland Watercourse
- Type 2 Wetland within Creek
- Type 2 Wetland within Ditch
- Type 7 Wooded Wetland

Westwood Professional Services, Inc.
7699 Anagram Drive
Eden Prairie, MN 55344

PHONE 952-937-5150
FAX 952-937-5822
TOLL FREE 1-888-937-5150

www.westwoodps.com





Data Source(s): Westwood Field GPS Data (2013), Paulding County 2012 DOQ (Accessed 2013)



Westwood Professional Services, Inc.
7699 Anagram Drive
Eden Prairie, MN 55344

PHONE 952-937-5150
FAX 952-937-5822
TOLL FREE 1-888-937-5150

www.westwoodps.com

Legend

- () Upland Sample Point
- A Wetland Sample Point
- Exhibit 8 Panel ID
- Current Proposed Corridor
- Overall Wetland Delineation Corridor
- Overall Project Boundary
- Non-Wetland Watercourse
- Type 2 Wetland within Creek
- Type 2 Wetland within Ditch
- Type 7 Wooded Wetland

Northwest Ohio Wind Project

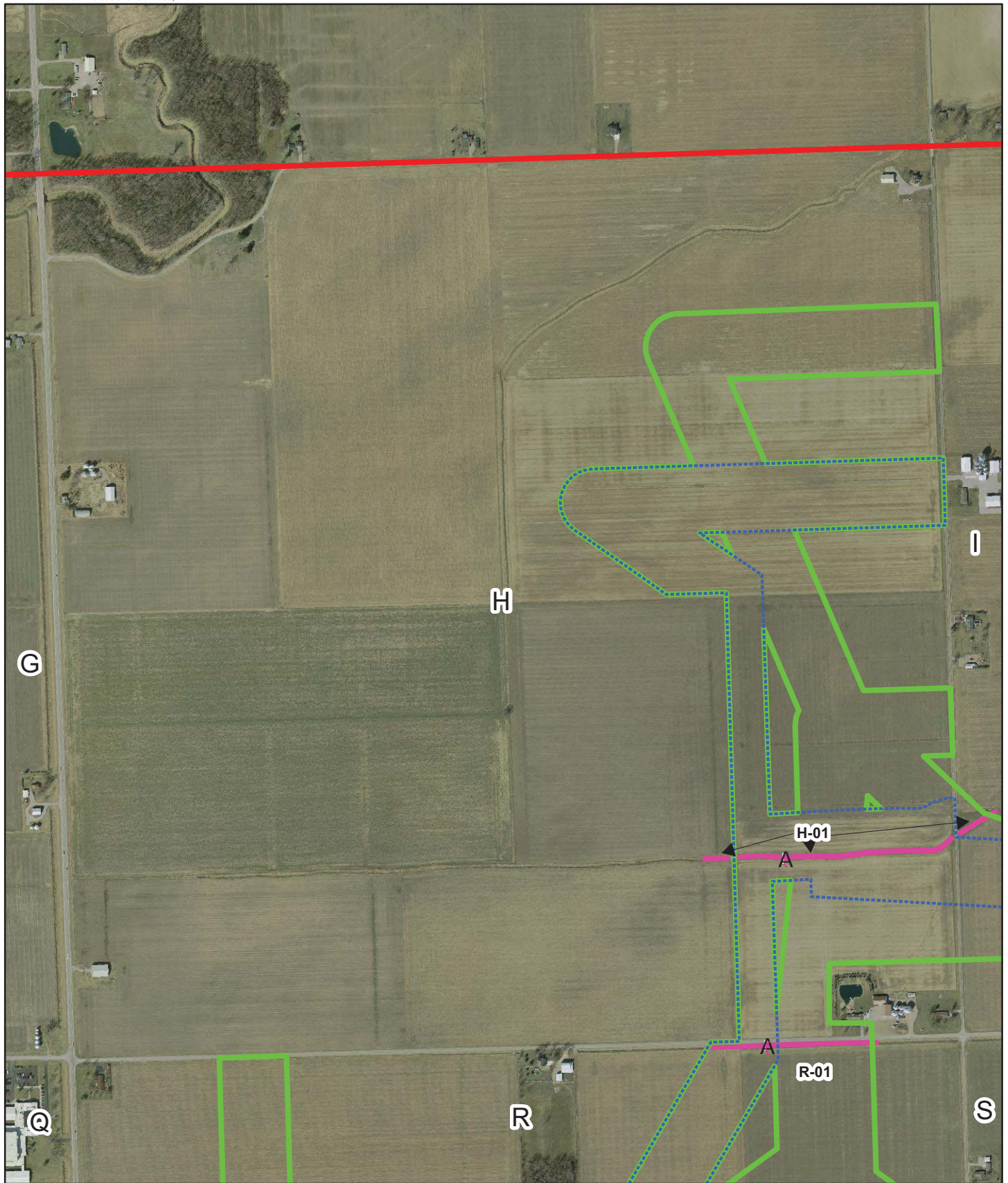
Paulding County, Ohio

**Wetland Delineation
Boundary Map**



0 1,000 Feet

EXHIBIT 8 G



Data Source(s): Westwood Field GPS Data (2013), Paulding County 2012 DOQ (Accessed 2013)

Northwest Ohio Wind Project

Paulding County, Ohio

Wetland Delineation Boundary Map

EXHIBIT 8 H

Legend

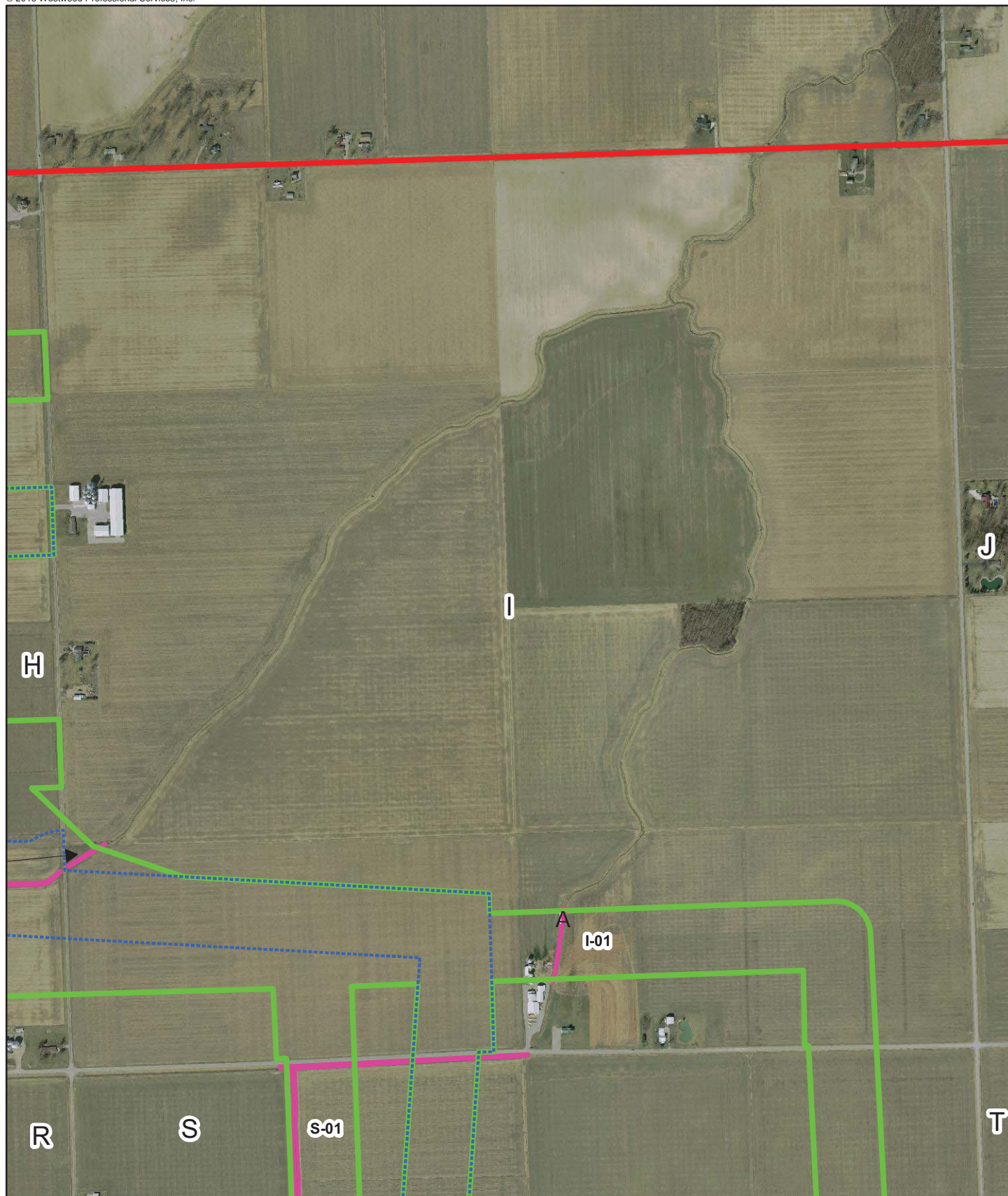
- () Upland Sample Point
- A Wetland Sample Point
- Exhibit 8 Panel ID
- Current Proposed Corridor
- Overall Wetland Delineation Corridor
- Overall Project Boundary
- Non-Wetland Watercourse
- Type 2 Wetland within Creek
- Type 2 Wetland within Ditch
- Type 7 Wooded Wetland

Westwood Professional Services, Inc.
7699 Anagram Drive
Eden Prairie, MN 55344

PHONE 952-937-5150
FAX 952-937-5822
TOLL FREE 1-888-937-5150

www.westwoodps.com





Data Source(s): Westwood Field GPS Data (2013), Paulding County 2012 DOQ (Accessed 2013)

Northwest Ohio Wind Project

Paulding County, Ohio

Wetland Delineation
Boundary Map

EXHIBIT 8 I



Westwood Professional Services, Inc.
7699 Anagram Drive
Eden Prairie, MN 55344

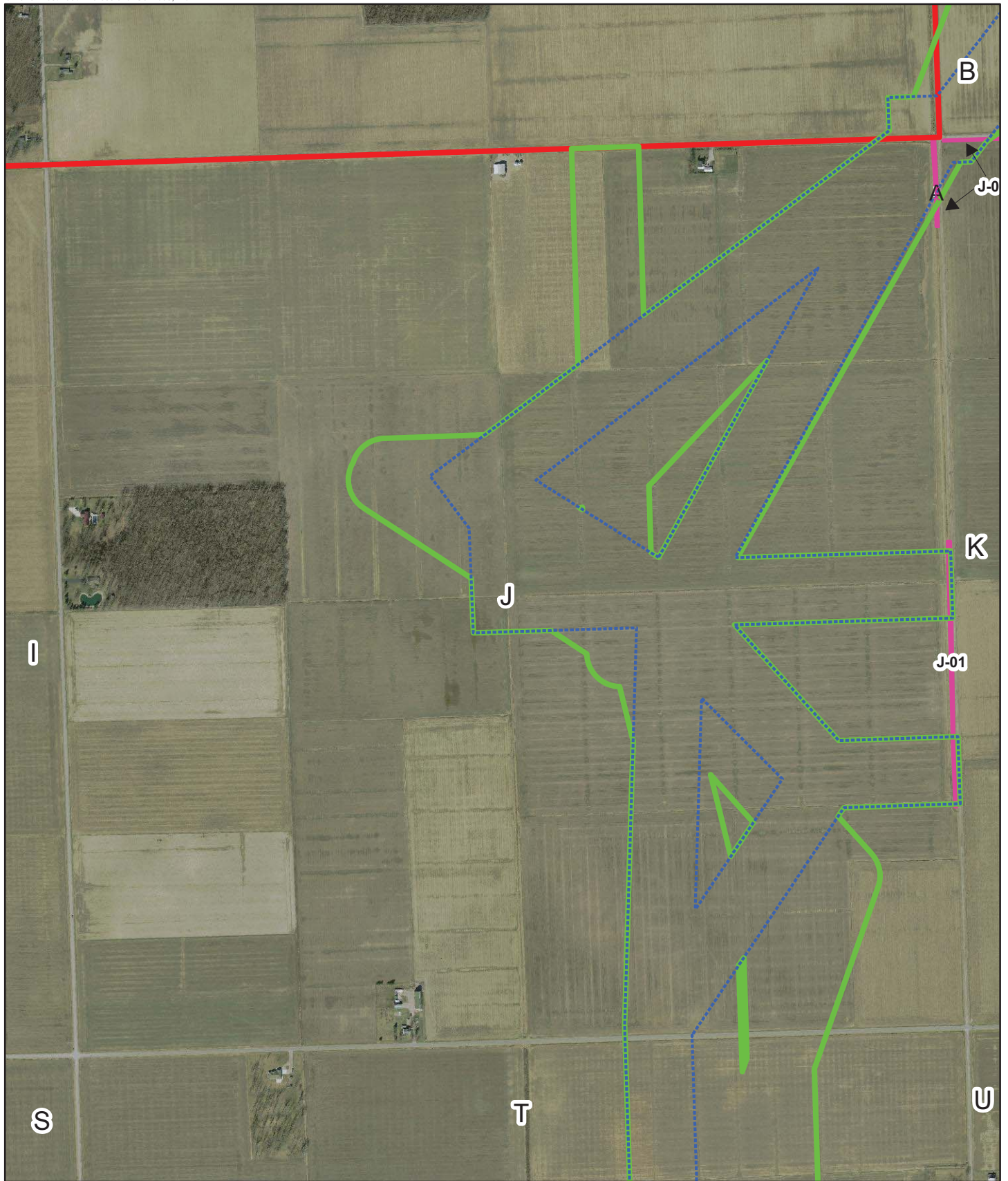
PHONE 952-937-5150
FAX 952-937-5822
TOLL FREE 1-888-937-5150

www.westwoodps.com

Legend

- () Upland Sample Point
- A Wetland Sample Point
- Exhibit 8 Panel ID
- Current Proposed Corridor
- Overall Wetland Delineation Corridor
- Overall Project Boundary
- Non-Wetland Watercourse
- Type 2 Wetland within Creek
- Type 2 Wetland within Ditch
- Type 7 Wooded Wetland





Data Source(s): Westwood Field GPS Data (2013), Paulding County 2012 DOQ (Accessed 2013)

Northwest Ohio Wind Project

Paulding County, Ohio

Wetland Delineation Boundary Map

EXHIBIT 8 J



Westwood Professional Services, Inc.
7699 Anagram Drive
Eden Prairie, MN 55344

PHONE 952-937-5150
FAX 952-937-5822
TOLL FREE 1-888-937-5150

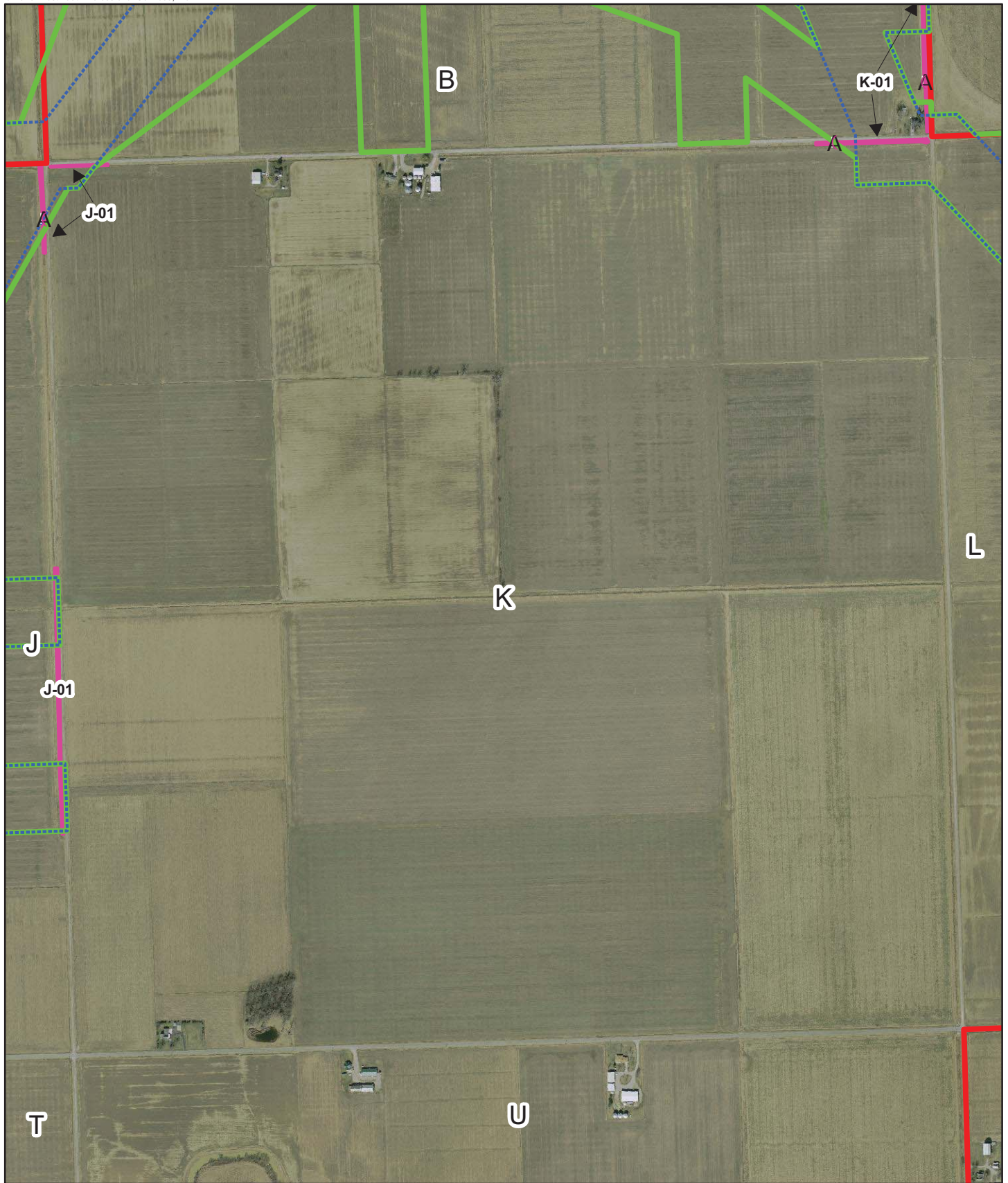
www.westwoodps.com

Legend

- () Upland Sample Point
- A Wetland Sample Point
- Exhibit 8 Panel ID
- Current Proposed Corridor
- Overall Wetland Delineation Corridor
- Overall Project Boundary
- Non-Wetland Watercourse
- Type 2 Wetland within Creek
- Type 2 Wetland within Ditch
- Type 7 Wooded Wetland



0 1,000 Feet



Data Source(s): Westwood Field GPS Data (2013), Paulding County 2012 DOQ (Accessed 2013)

Northwest Ohio Wind Project

Paulding County, Ohio

Wetland Delineation Boundary Map

EXHIBIT 8 K

Legend

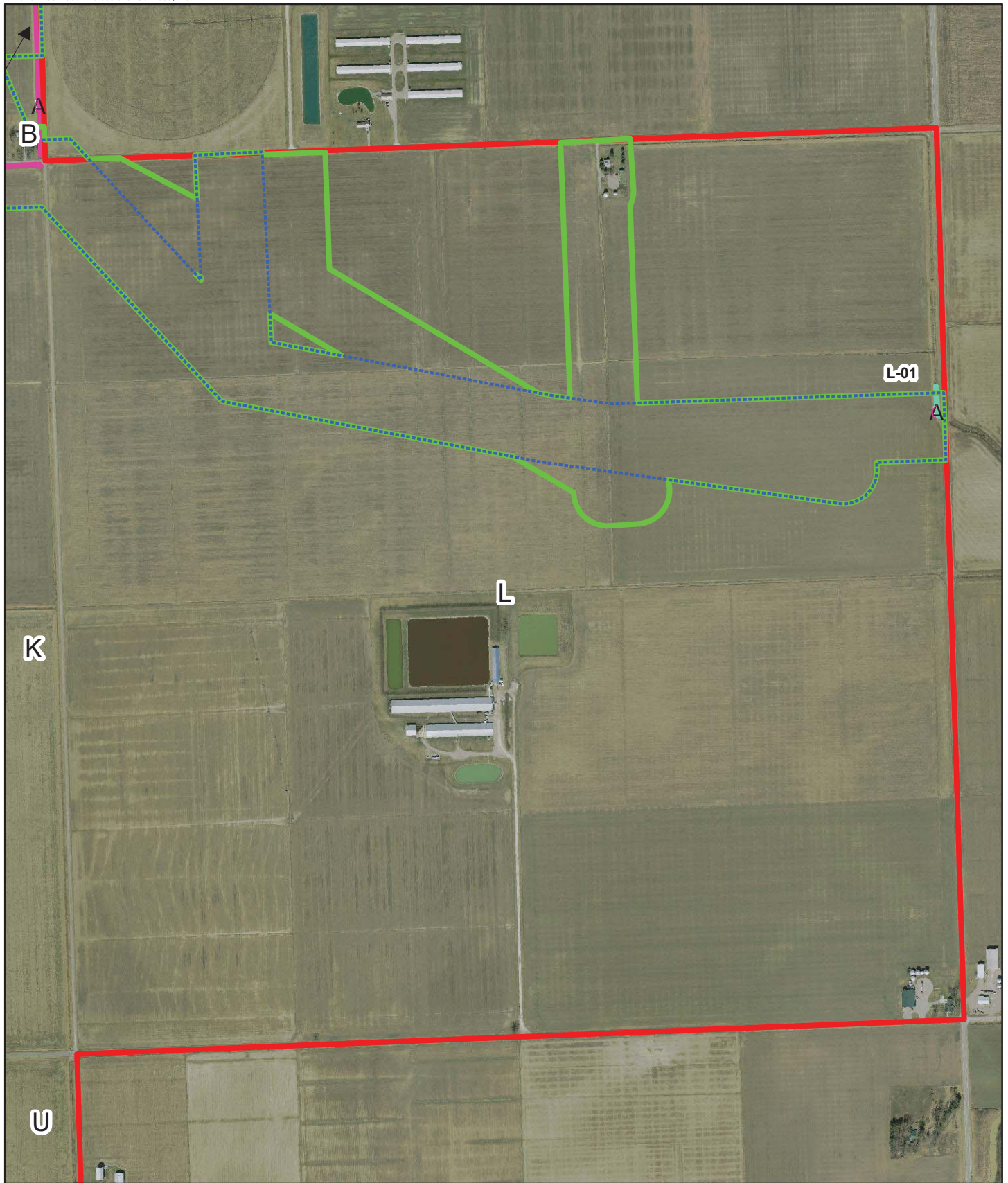
- (Upland Sample Point
- A Wetland Sample Point
- Exhibit 8 Panel ID
- Current Proposed Corridor
- Overall Wetland Delineation Corridor
- Overall Project Boundary
- Non-Wetland Watercourse
- Type 2 Wetland within Creek
- Type 2 Wetland within Ditch
- Type 7 Wooded Wetland

Westwood Professional Services, Inc.
7699 Anagram Drive
Eden Prairie, MN 55344

PHONE 952-937-5150
FAX 952-937-5822
TOLL FREE 1-888-937-5150

www.westwoodps.com





Data Source(s): Westwood Field GPS Data (2013), Paulding County 2012 DOQ (Accessed 2013)



Westwood Professional Services, Inc.
7699 Anagram Drive
Eden Prairie, MN 55344

PHONE 952-937-5150
FAX 952-937-5822
TOLL FREE 1-888-937-5150

www.westwoodps.com

Legend

- () Upland Sample Point
- A Wetland Sample Point
- Exhibit 8 Panel ID
- Current Proposed Corridor
- Overall Wetland Delineation Corridor
- Overall Project Boundary
- Non-Wetland Watercourse
- Type 2 Wetland within Creek
- Type 2 Wetland within Ditch
- Type 7 Wooded Wetland

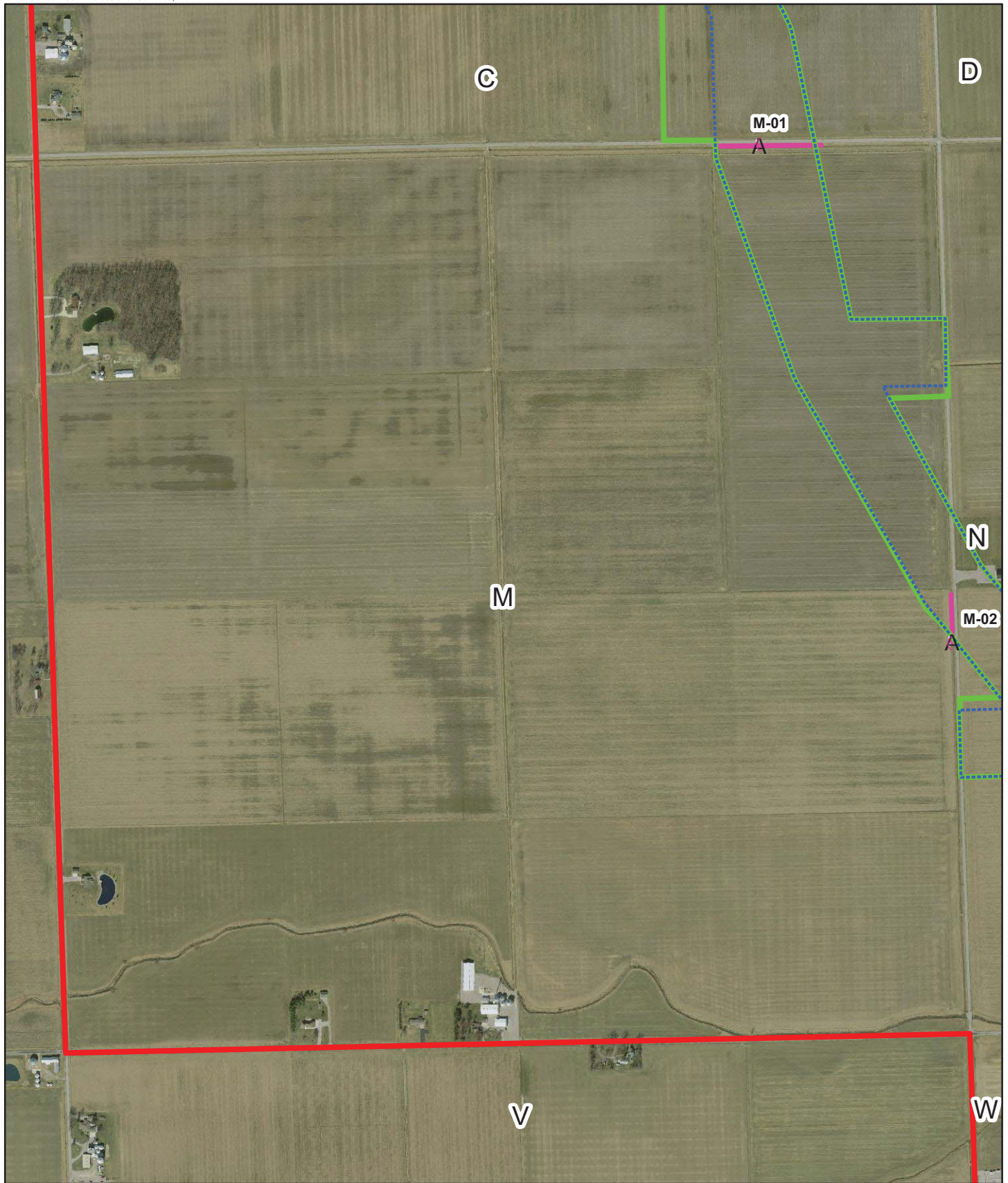
Northwest Ohio Wind Project

Paulding County, Ohio

Wetland Delineation Boundary Map



EXHIBIT 8 L



Data Source(s): Westwood Field GPS Data (2013), Paulding County 2012 DOQ (Accessed 2013)

Northwest Ohio Wind Project

Paulding County, Ohio

Wetland Delineation Boundary Map

EXHIBIT 8 M

Legend

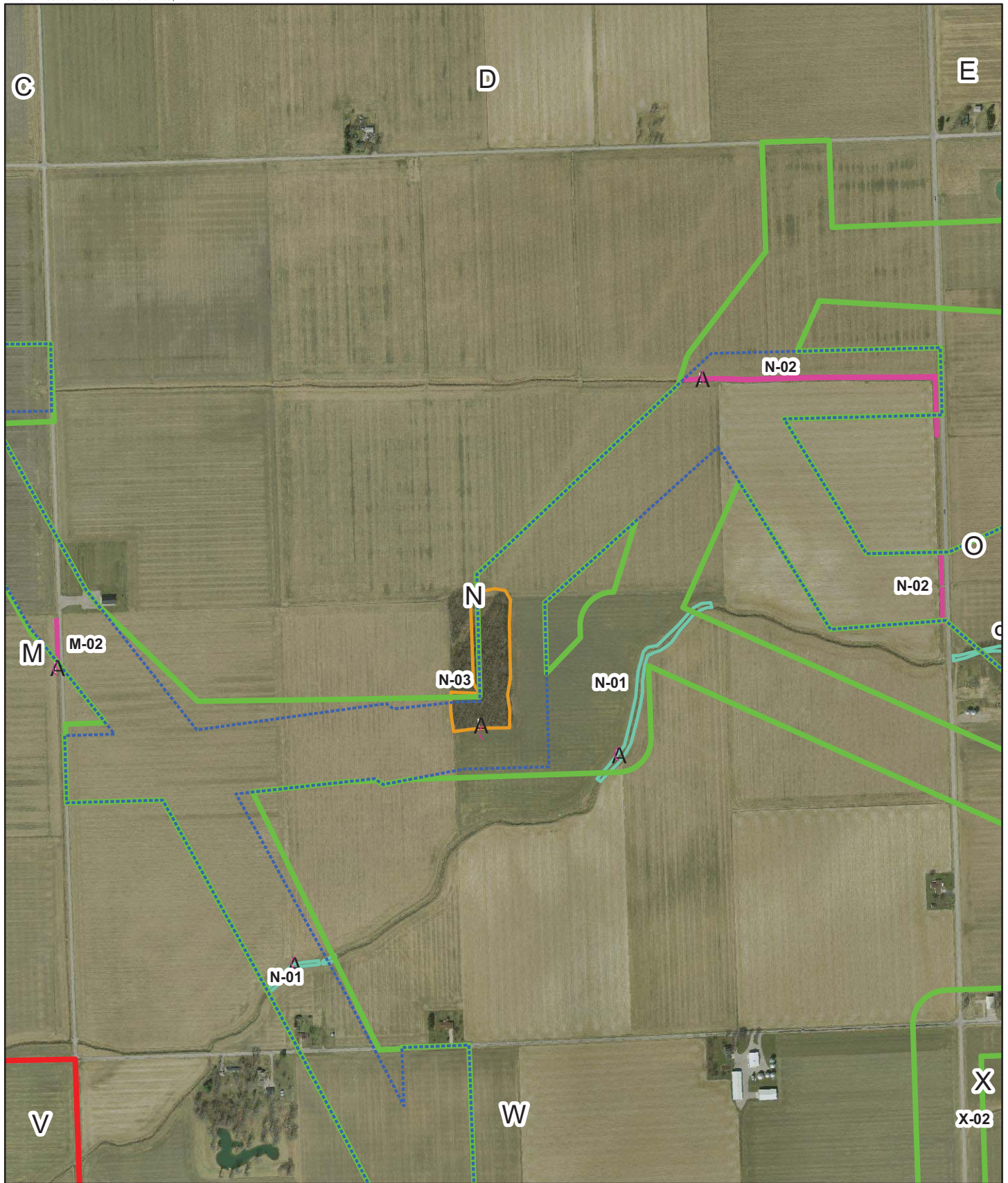
- () Upland Sample Point
- A Wetland Sample Point
- Exhibit 8 Panel ID
- Current Proposed Corridor
- Overall Wetland Delineation Corridor
- Overall Project Boundary
- Non-Wetland Watercourse
- Type 2 Wetland within Creek
- Type 2 Wetland within Ditch
- Type 7 Wooded Wetland



Westwood Professional Services, Inc.
7699 Anagram Drive
Eden Prairie, MN 55344

PHONE 952-937-5150
FAX 952-937-5822
TOLL FREE 1-888-937-5150

www.westwoodps.com



Data Source(s): Westwood Field GPS Data (2013), Paulding County 2012 DOQ (Accessed 2013)

Legend

- () Upland Sample Point
- A Wetland Sample Point
- Exhibit 8 Panel ID
- Current Proposed Corridor
- Overall Wetland Delineation Corridor
- Overall Project Boundary
- Non-Wetland Watercourse
- Type 2 Wetland within Creek
- Type 2 Wetland within Ditch
- Type 7 Wooded Wetland

Northwest Ohio Wind Project

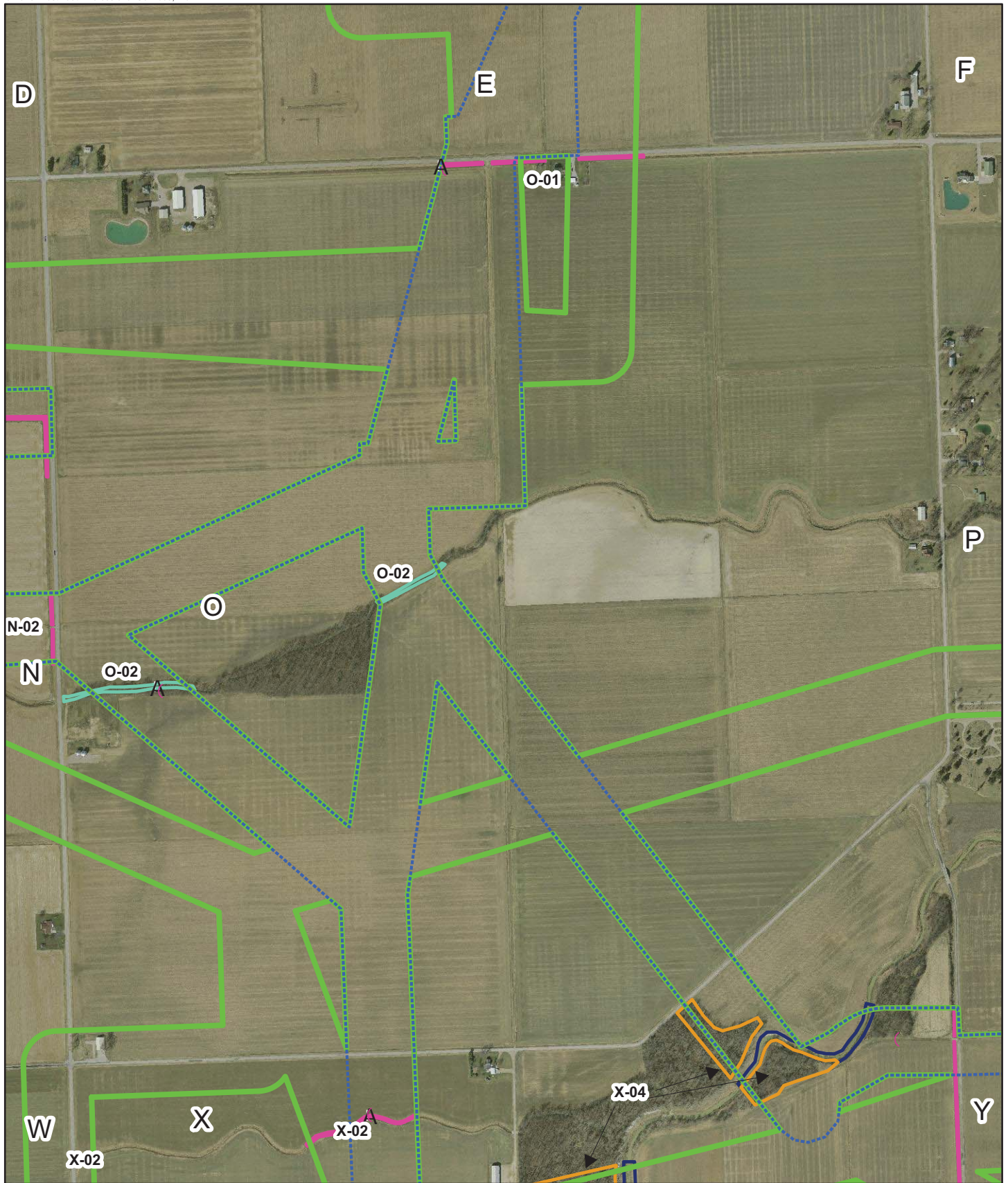
Paulding County, Ohio

Wetland Delineation Boundary Map

EXHIBIT 8 N



Westwood Professional Services, Inc.
 7699 Anagram Drive
 Eden Prairie, MN 55344
 PHONE 952-937-5150
 FAX 952-937-5822
 TOLL FREE 1-888-937-5150
 www.westwoodps.com



Data Source(s): Westwood Field GPS Data (2013), Paulding County 2012 DOQ (Accessed 2013)



Westwood Professional Services, Inc.
7699 Anagram Drive
Eden Prairie, MN 55344

PHONE 952-937-5150
FAX 952-937-5822
TOLL FREE 1-888-937-5150

www.westwoodps.com

Legend

- () Upland Sample Point
- A Wetland Sample Point
- Exhibit 8 Panel ID
- Current Proposed Corridor
- Overall Wetland Delineation Corridor
- Overall Project Boundary
- Non-Wetland Watercourse
- Type 2 Wetland within Creek
- Type 2 Wetland within Ditch
- Type 7 Wooded Wetland

Northwest Ohio Wind Project

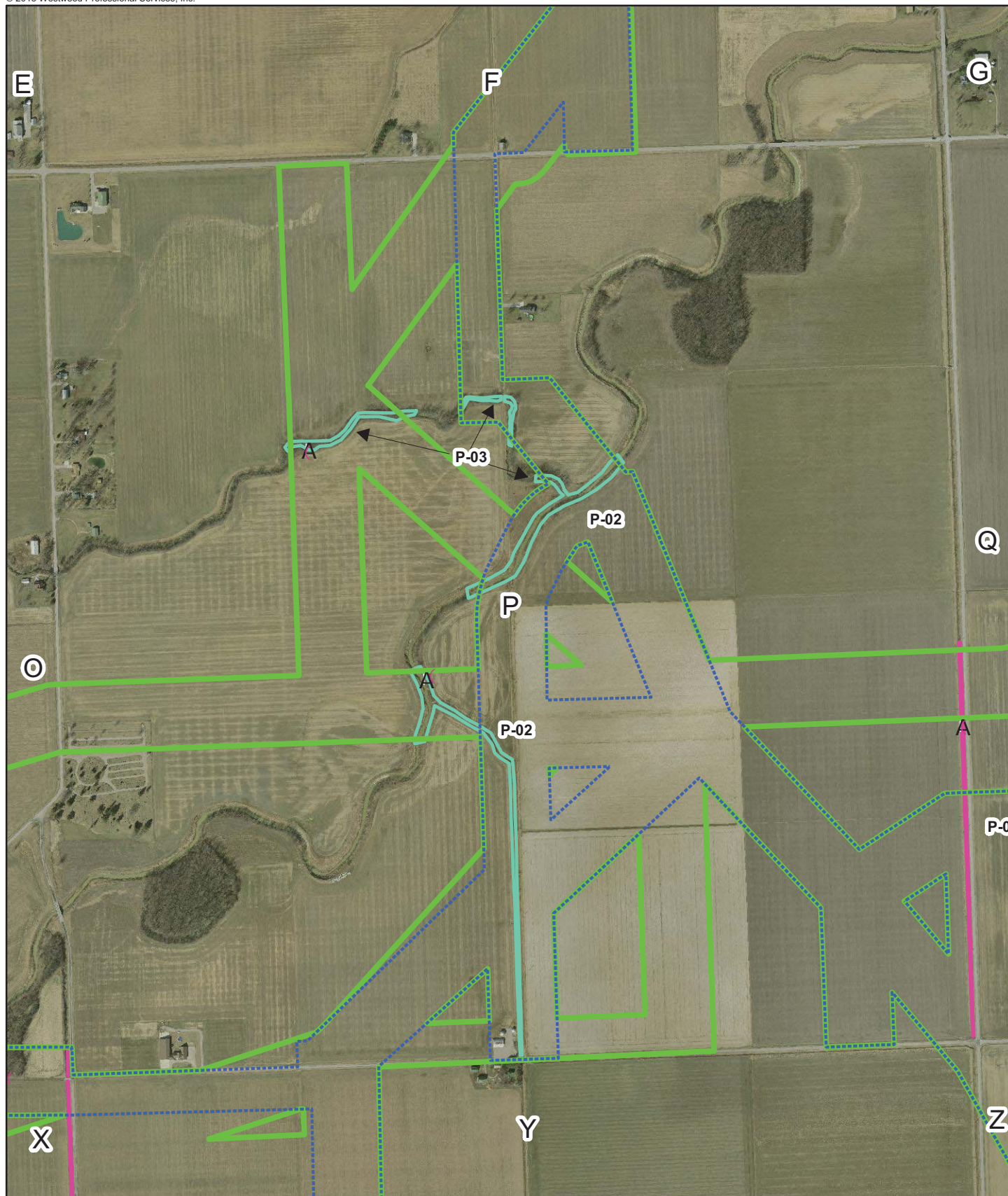
Paulding County, Ohio

Wetland Delineation Boundary Map



0 1,000 Feet

EXHIBIT 8 O



Data Source(s): Westwood Field GPS Data (2013), Paulding County 2012 DOQ (Accessed 2013)

Northwest Ohio Wind Project

Paulding County, Ohio

Wetland Delineation Boundary Map

EXHIBIT 8 P

Legend

- () Upland Sample Point
- A Wetland Sample Point
- Exhibit 8 Panel ID
- Current Proposed Corridor
- Overall Wetland Delineation Corridor
- Overall Project Boundary
- Non-Wetland Watercourse
- Type 2 Wetland within Creek
- Type 2 Wetland within Ditch
- Type 7 Wooded Wetland



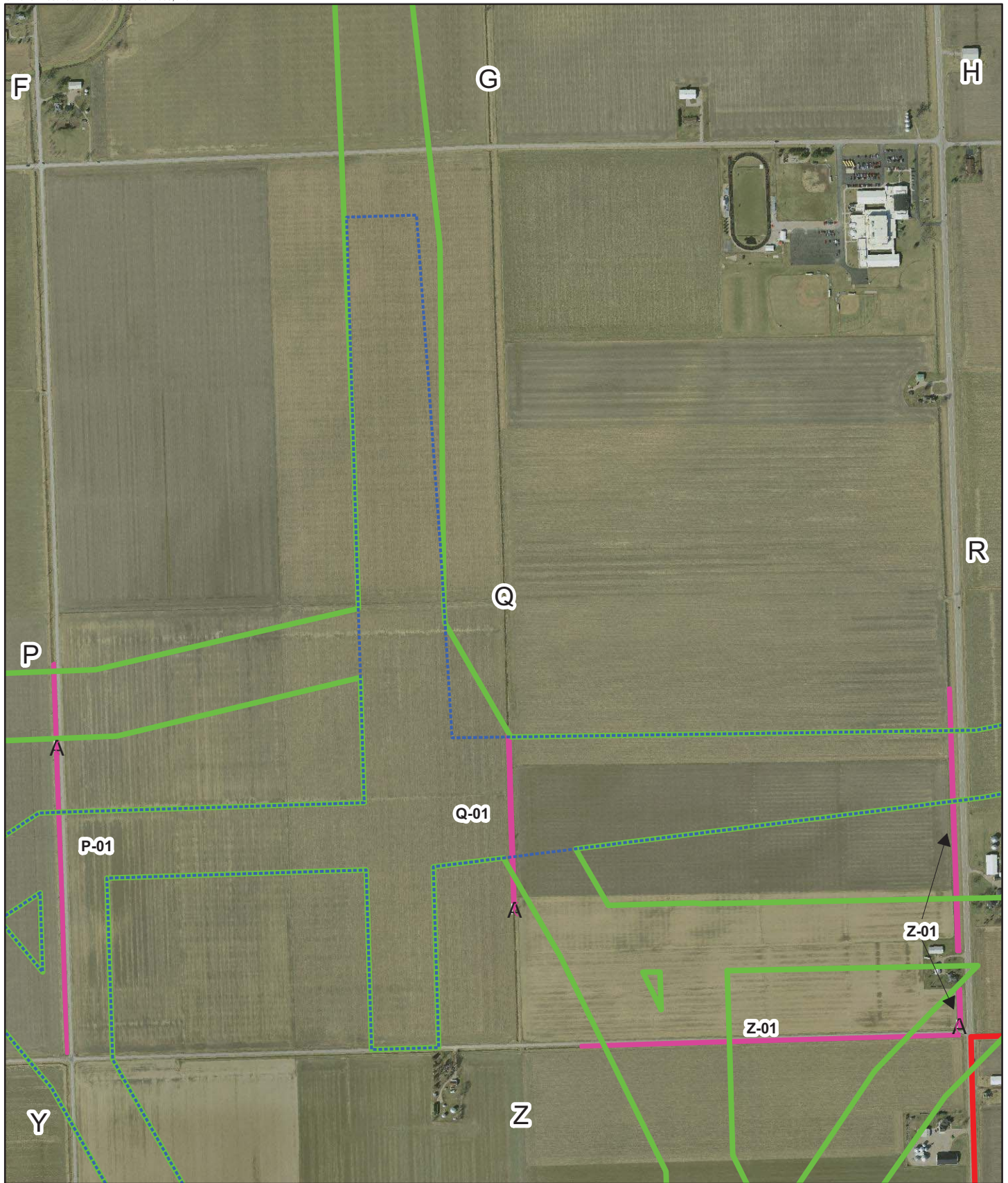
0 1,000 Feet



Westwood Professional Services, Inc.
7699 Anagram Drive
Eden Prairie, MN 55344

PHONE 952-937-5150
FAX 952-937-5822
TOLL FREE 1-888-937-5150

www.westwoodps.com



Data Source(s): Westwood Field GPS Data (2013), Paulding County 2012 DOQ (Accessed 2013)

Legend

- () Upland Sample Point
- A Wetland Sample Point
- Exhibit 8 Panel ID
- Current Proposed Corridor
- Overall Wetland Delineation Corridor
- Overall Project Boundary
- Non-Wetland Watercourse
- Type 2 Wetland within Creek
- Type 2 Wetland within Ditch
- Type 7 Wooded Wetland

Northwest Ohio Wind Project

Paulding County, Ohio

Wetland Delineation Boundary Map



0 1,000 Feet

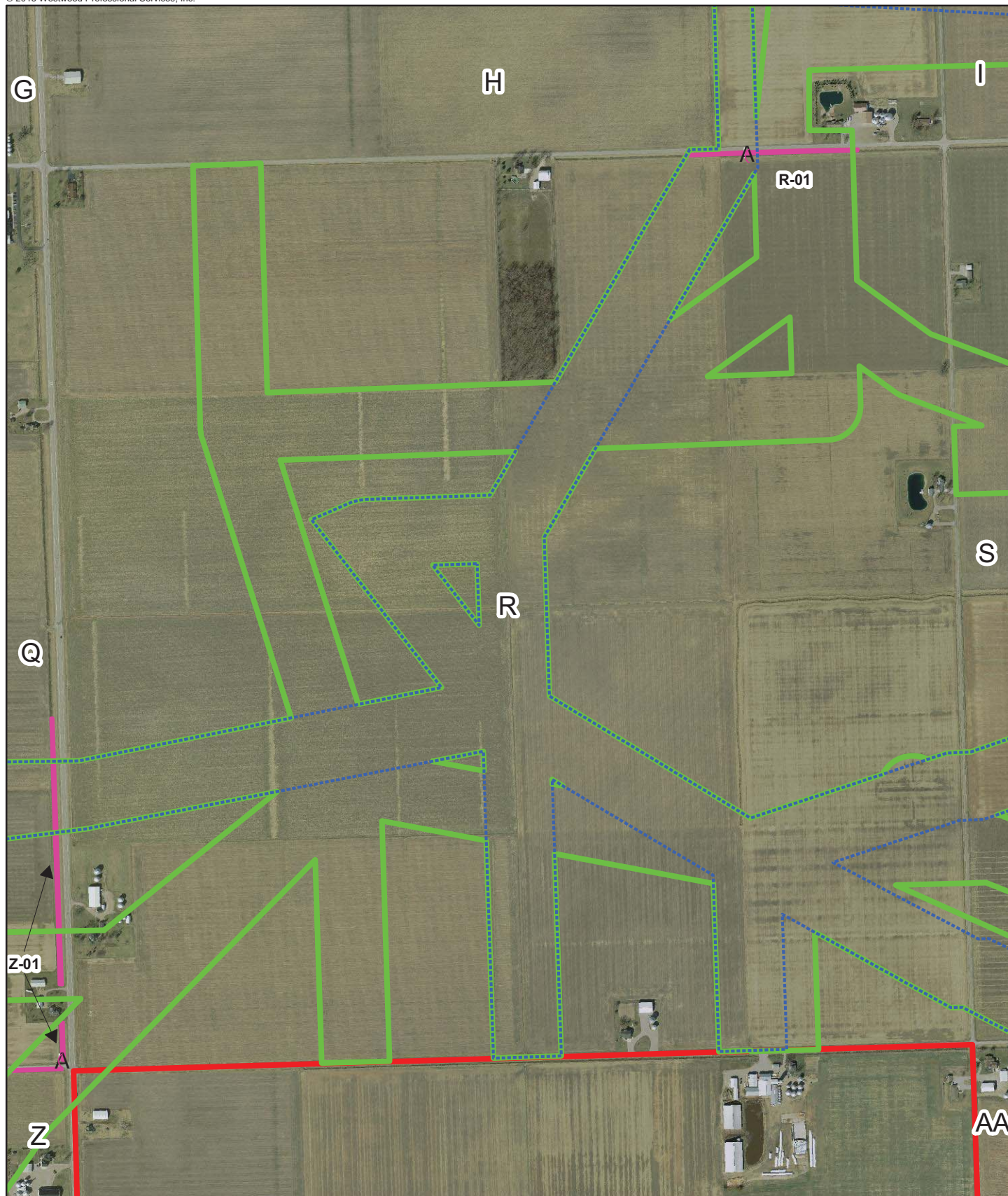
EXHIBIT 8 Q



Westwood Professional Services, Inc.
7699 Anagram Drive
Eden Prairie, MN 55344

PHONE 952-937-5150
FAX 952-937-5822
TOLL FREE 1-888-937-5150

www.westwoodps.com



Data Source(s): Westwood Field GPS Data (2013), Paulding County 2012 DOQ (Accessed 2013)

Legend

- () Upland Sample Point
- A Wetland Sample Point
- Exhibit 8 Panel ID
- Current Proposed Corridor
- Overall Wetland Delineation Corridor
- Overall Project Boundary
- Non-Wetland Watercourse
- Type 2 Wetland within Creek
- Type 2 Wetland within Ditch
- Type 7 Wooded Wetland

Northwest Ohio Wind Project

Paulding County, Ohio

Wetland Delineation Boundary Map



0 1,000 Feet

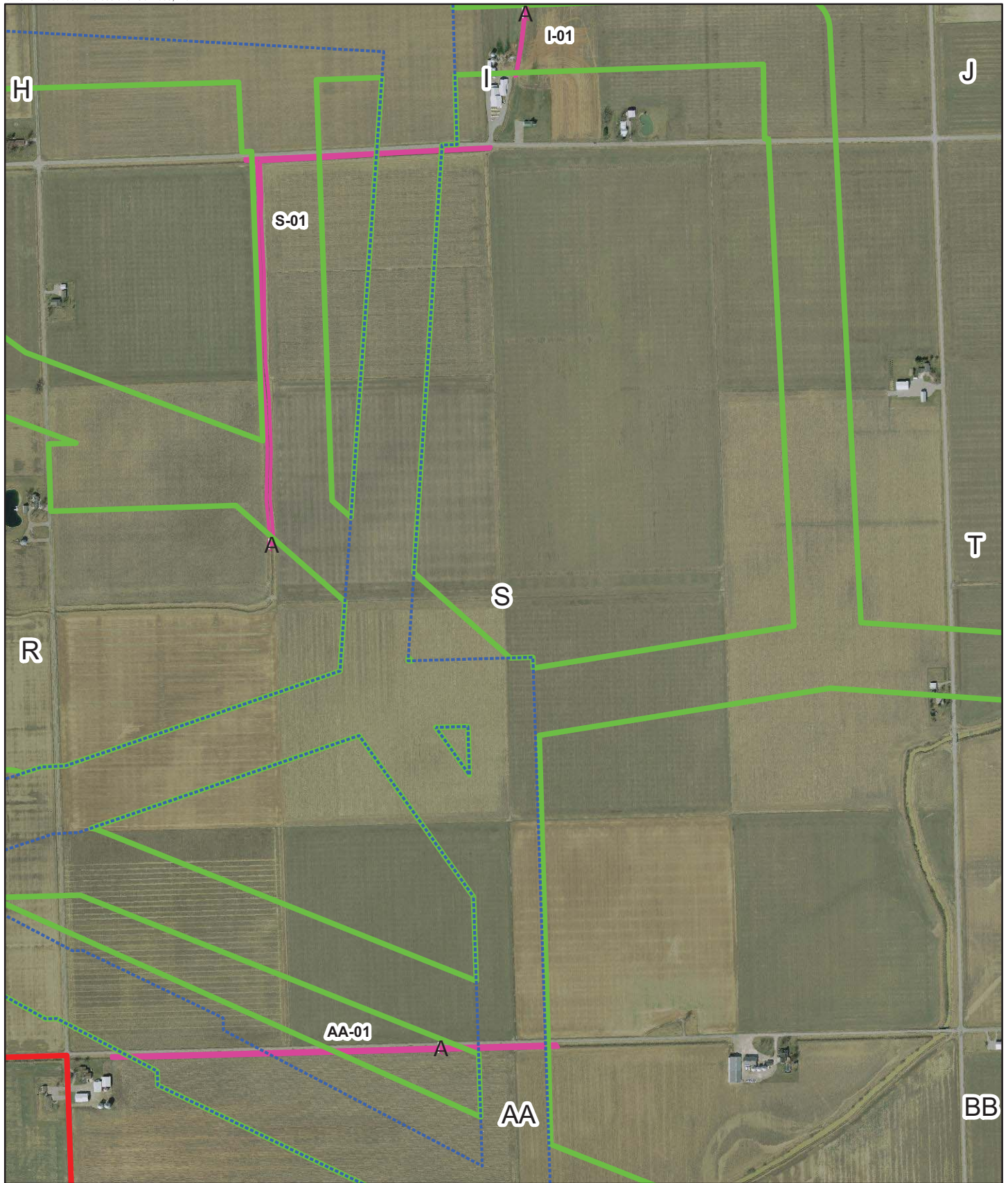
EXHIBIT 8 R



Westwood Professional Services, Inc.
7699 Anagram Drive
Eden Prairie, MN 55344

PHONE 952-937-5150
FAX 952-937-5822
TOLL FREE 1-888-937-5150

www.westwoodps.com



Data Source(s): Westwood Field GPS Data (2013), Paulding County 2012 DOQ (Accessed 2013)

Legend

- () Upland Sample Point
- A Wetland Sample Point
- Exhibit 8 Panel ID
- Current Proposed Corridor
- Overall Wetland Delineation Corridor
- Overall Project Boundary
- Non-Wetland Watercourse
- Type 2 Wetland within Creek
- Type 2 Wetland within Ditch
- Type 7 Wooded Wetland

Northwest Ohio Wind Project

Paulding County, Ohio

Wetland Delineation Boundary Map

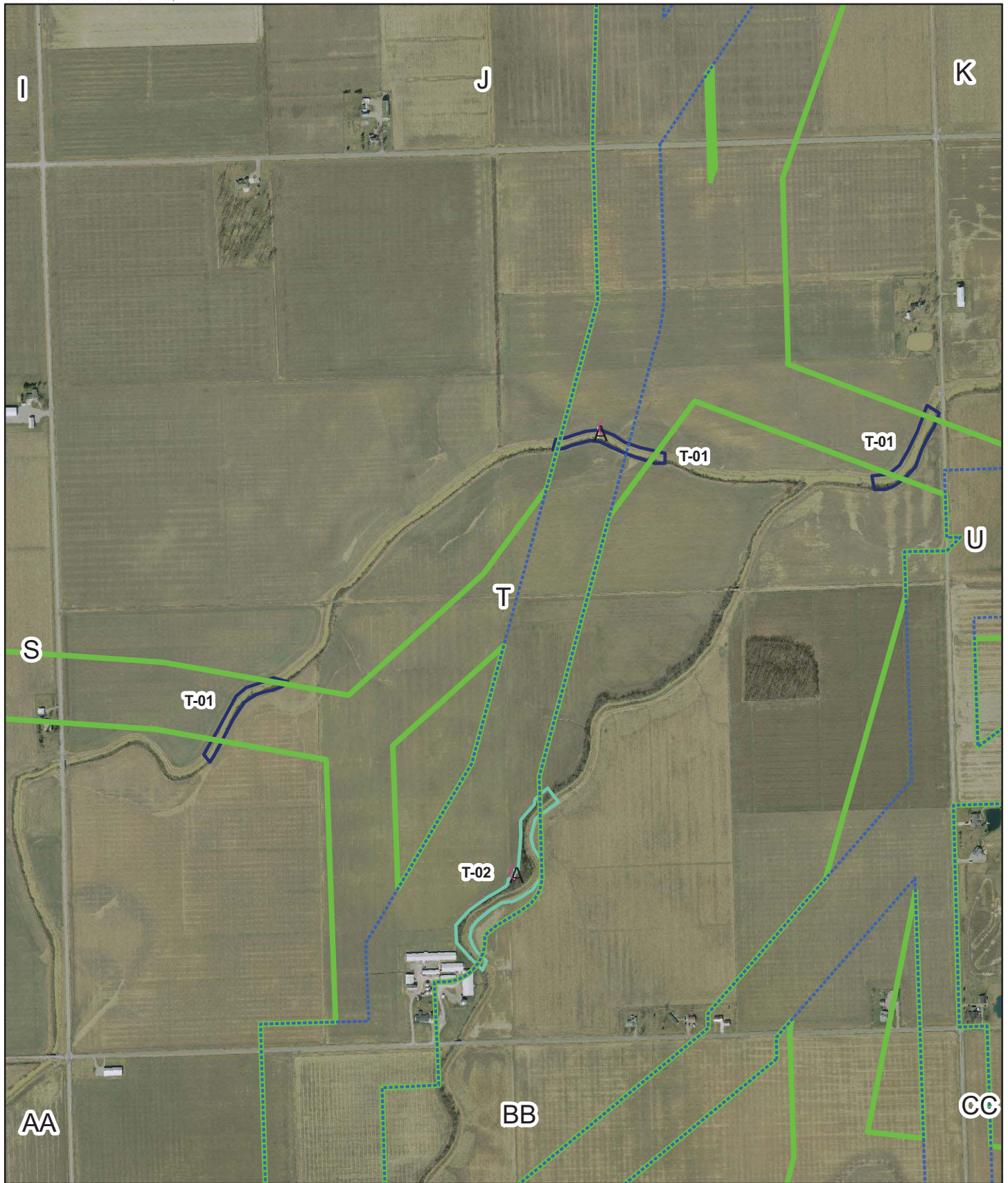
EXHIBIT 8 S



Westwood Professional Services, Inc.
7699 Anagram Drive
Eden Prairie, MN 55344

PHONE 952-937-5150
FAX 952-937-5822
TOLL FREE 1-888-937-5150

www.westwoodps.com



Data Source(s): Westwood Field GPS Data (2013), Paulding County 2012 DOQ (Accessed 2013)



Westwood Professional Services, Inc.
7699 Anagram Drive
Eden Prairie, MN 55344

PHONE 952-937-5150
FAX 952-937-5822
TOLL FREE 1-888-937-5150

www.westwoodps.com

Legend

- () Upland Sample Point
- A Wetland Sample Point
- Exhibit 8 Panel ID
- Current Proposed Corridor
- Overall Wetland Delineation Corridor
- Overall Project Boundary
- Non-Wetland Watercourse
- Type 2 Wetland within Creek
- Type 2 Wetland within Ditch
- Type 7 Wooded Wetland

Northwest Ohio Wind Project

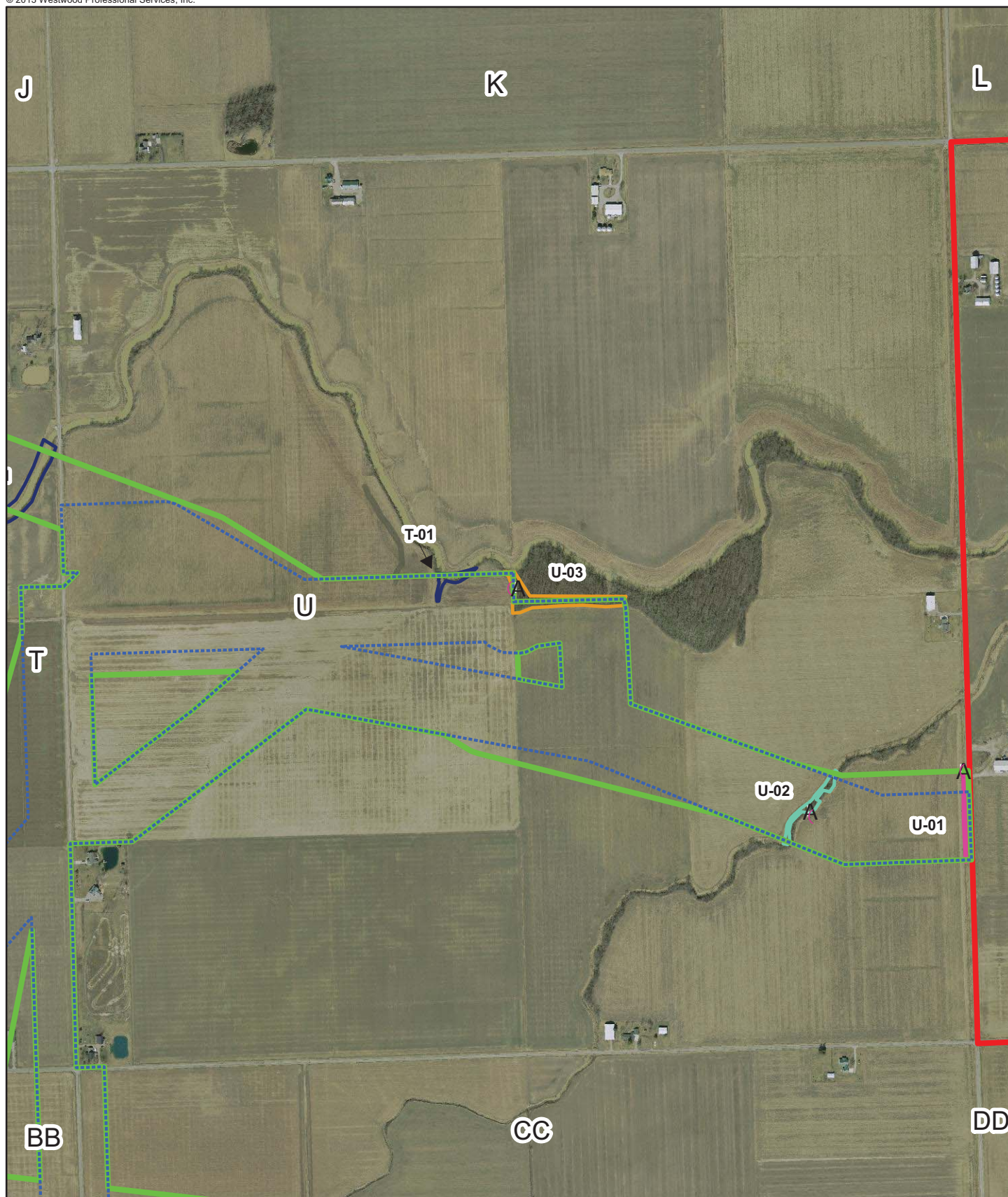
Paulding County, Ohio

Wetland Delineation Boundary Map



0 1,000 Feet

EXHIBIT 8 T



Data Source(s): Westwood Field GPS Data (2013), Paulding County 2012 DOQ (Accessed 2013)



Westwood Professional Services, Inc.
7699 Anagram Drive
Eden Prairie, MN 55344

PHONE 952-937-5150
FAX 952-937-5822
TOLL FREE 1-888-937-5150

www.westwoodps.com

Legend

- () Upland Sample Point
- A Wetland Sample Point
- Exhibit 8 Panel ID
- Current Proposed Corridor
- Overall Wetland Delineation Corridor
- Overall Project Boundary
- Non-Wetland Watercourse
- Type 2 Wetland within Creek
- Type 2 Wetland within Ditch
- Type 7 Wooded Wetland

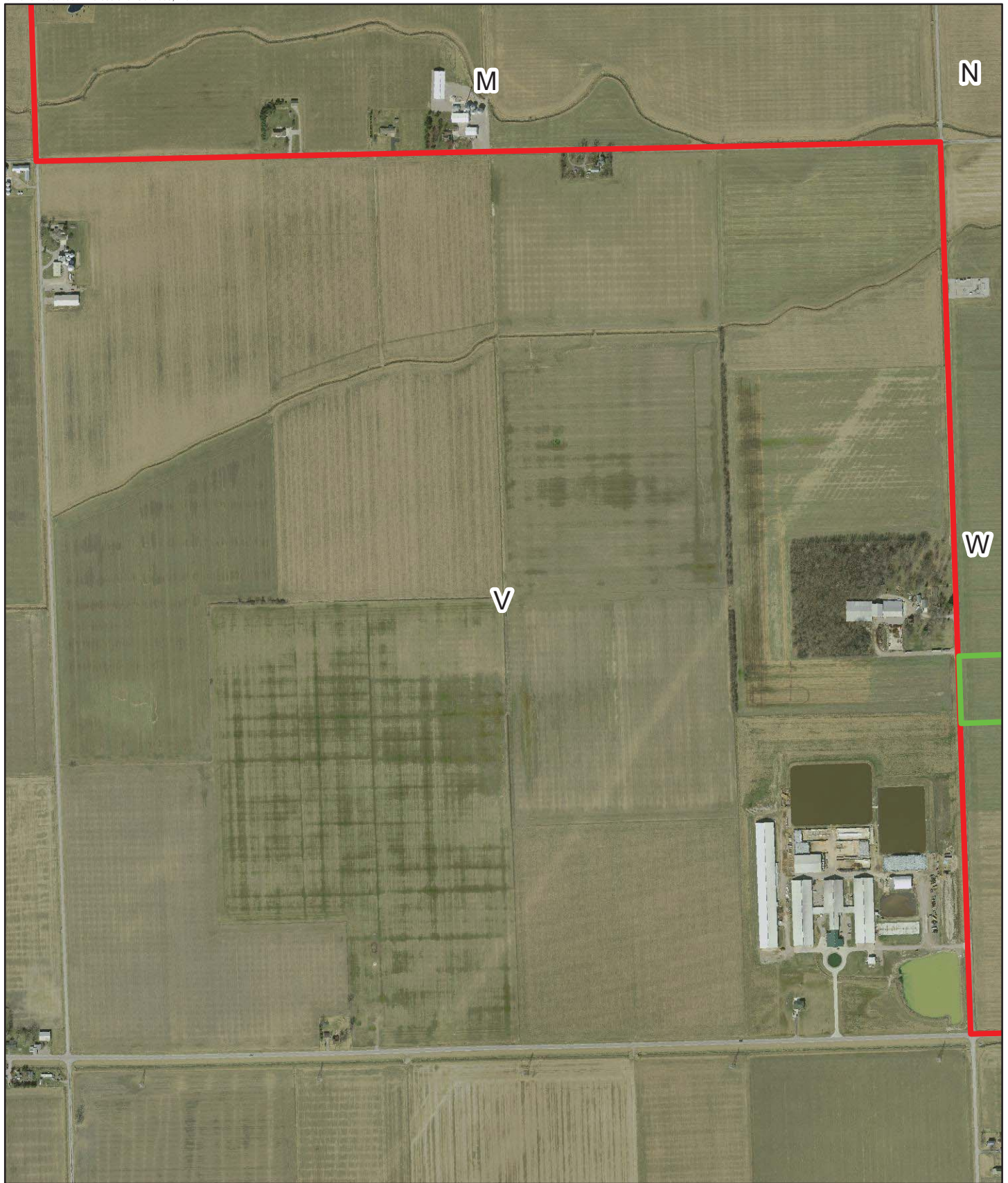
Northwest Ohio Wind Project

Paulding County, Ohio

Wetland Delineation Boundary Map



EXHIBIT 8 U



Data Source(s): Westwood Field GPS Data (2013), Paulding County 2012 DOQ (Accessed 2013)

Northwest Ohio Wind Project

Paulding County, Ohio

Wetland Delineation Boundary Map

EXHIBIT 8 V

Legend

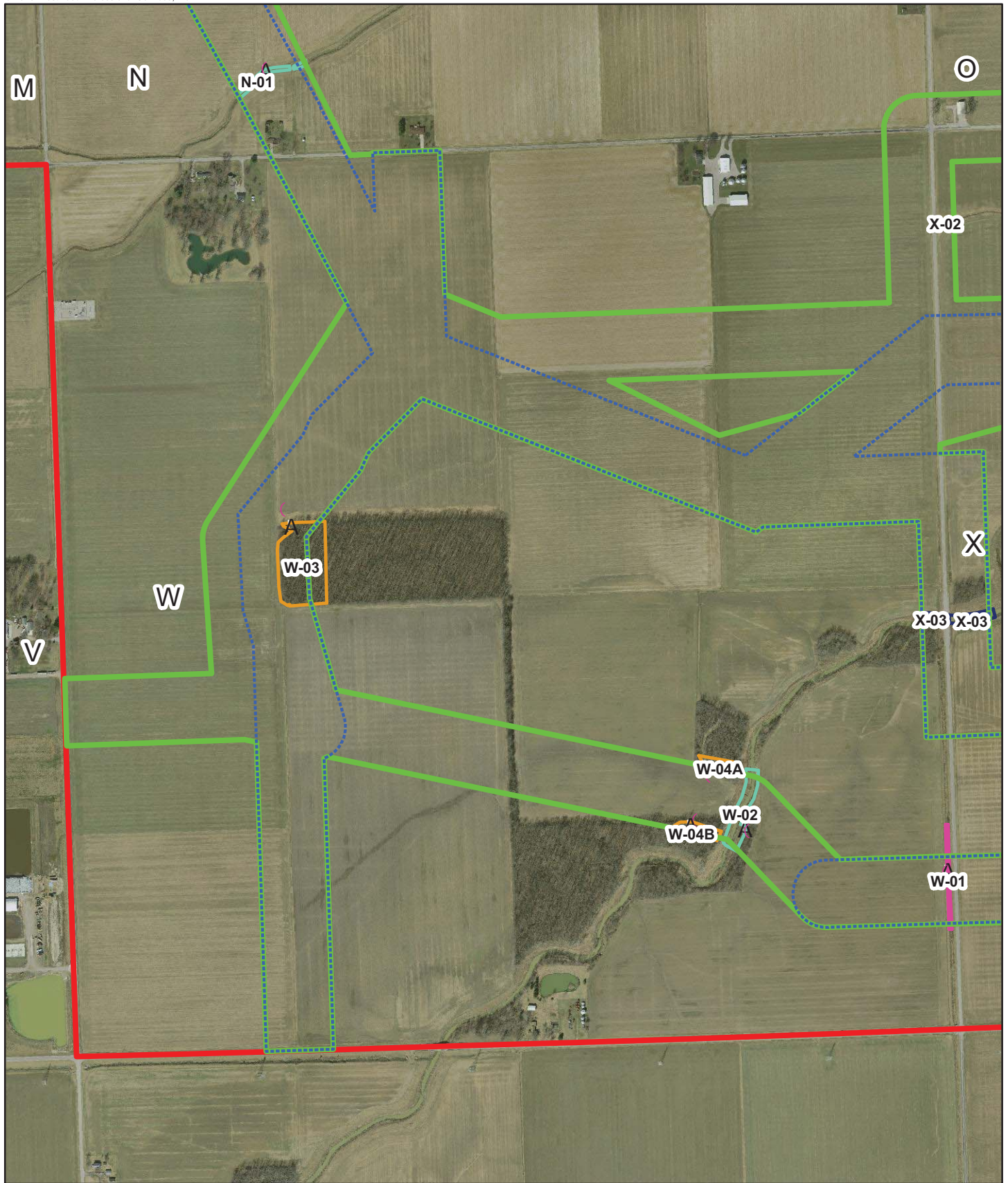
- () Upland Sample Point
- A Wetland Sample Point
- Exhibit 8 Panel ID
- Current Proposed Corridor
- Overall Wetland Delineation Corridor
- Overall Project Boundary
- Non-Wetland Watercourse
- Type 2 Wetland within Creek
- Type 2 Wetland within Ditch
- Type 7 Wooded Wetland

Westwood Professional Services, Inc.
7699 Anagram Drive
Eden Prairie, MN 55344

PHONE 952-937-5150
FAX 952-937-5822
TOLL FREE 1-888-937-5150

www.westwoodps.com





Data Source(s): Westwood Field GPS Data (2013), Paulding County 2012 DOQ (Accessed 2013)

Legend

- () Upland Sample Point
- A Wetland Sample Point
- Exhibit 8 Panel ID
- Current Proposed Corridor
- Overall Wetland Delineation Corridor
- Overall Project Boundary
- Non-Wetland Watercourse
- Type 2 Wetland within Creek
- Type 2 Wetland within Ditch
- Type 7 Wooded Wetland

Northwest Ohio Wind Project

Paulding County, Ohio

Wetland Delineation Boundary Map



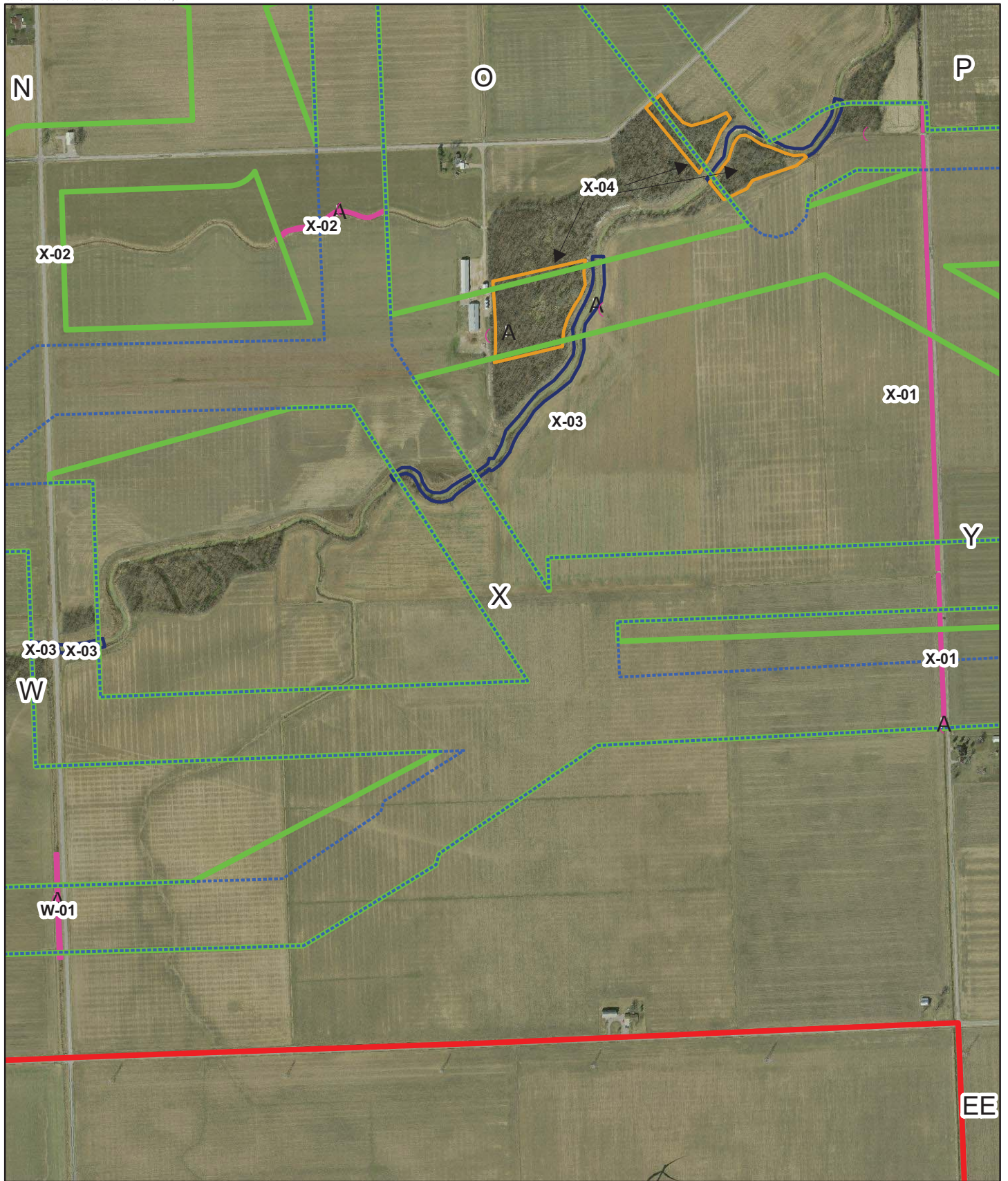
EXHIBIT 8 W



Westwood Professional Services, Inc.
7699 Anagram Drive
Eden Prairie, MN 55344

PHONE 952-937-5150
FAX 952-937-5822
TOLL FREE 1-888-937-5150

www.westwoodps.com



Data Source(s): Westwood Field GPS Data (2013), Paulding County 2012 DOQ (Accessed 2013)

Legend

- () Upland Sample Point
- A Wetland Sample Point
- Exhibit 8 Panel ID
- Current Proposed Corridor
- Overall Wetland Delineation Corridor
- Overall Project Boundary
- Non-Wetland Watercourse
- Type 2 Wetland within Creek
- Type 2 Wetland within Ditch
- Type 7 Wooded Wetland

Northwest Ohio Wind Project

Paulding County, Ohio

Wetland Delineation Boundary Map



0 1,000 Feet

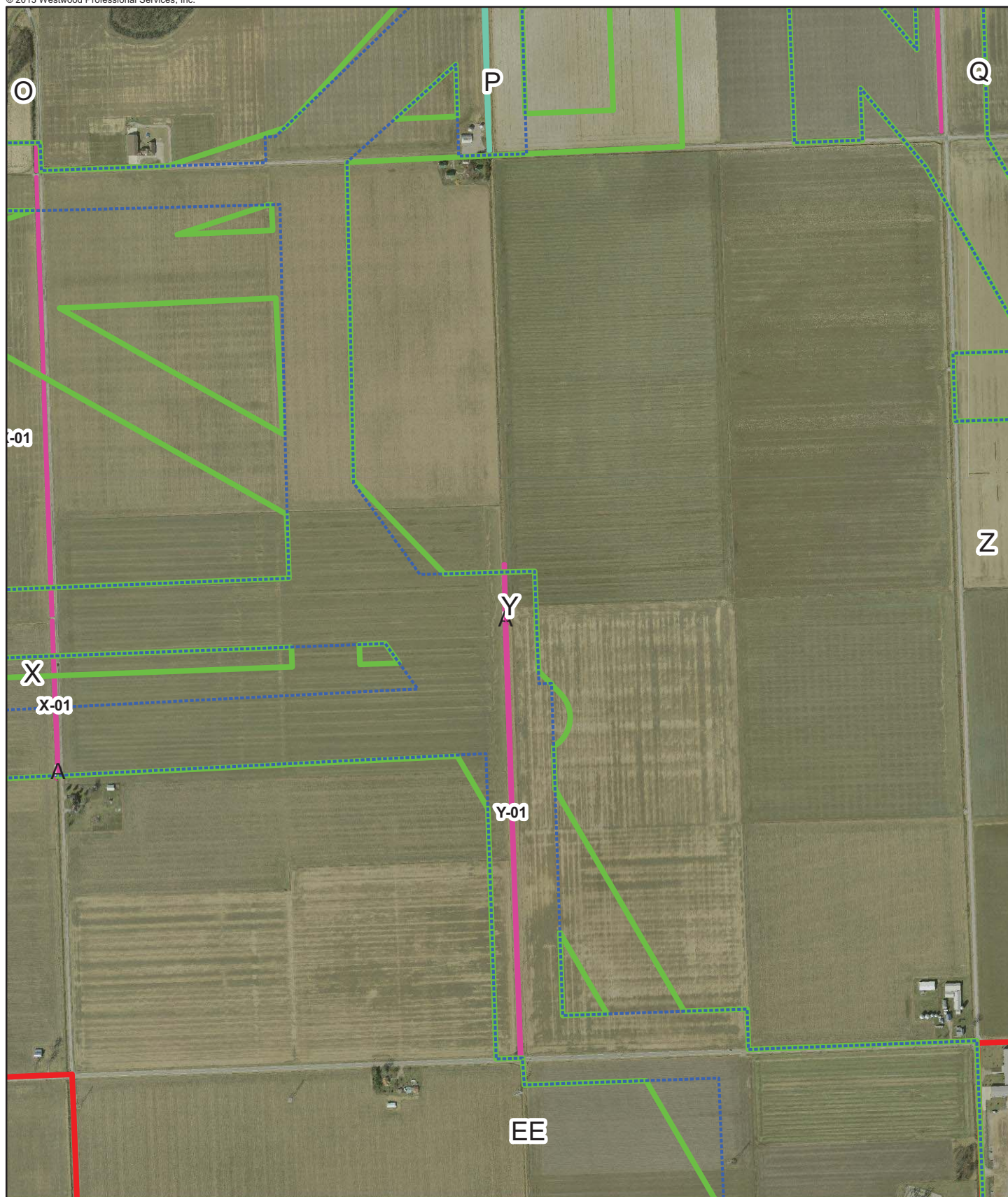
EXHIBIT 8 X













Westwood Professional Services, Inc.
7699 Anagram Drive
Eden Prairie, MN 55344

PHONE 952-937-5150
FAX 952-937-5822
TOLL FREE 1-888-937-5150

www.westwoodps.com



Legend

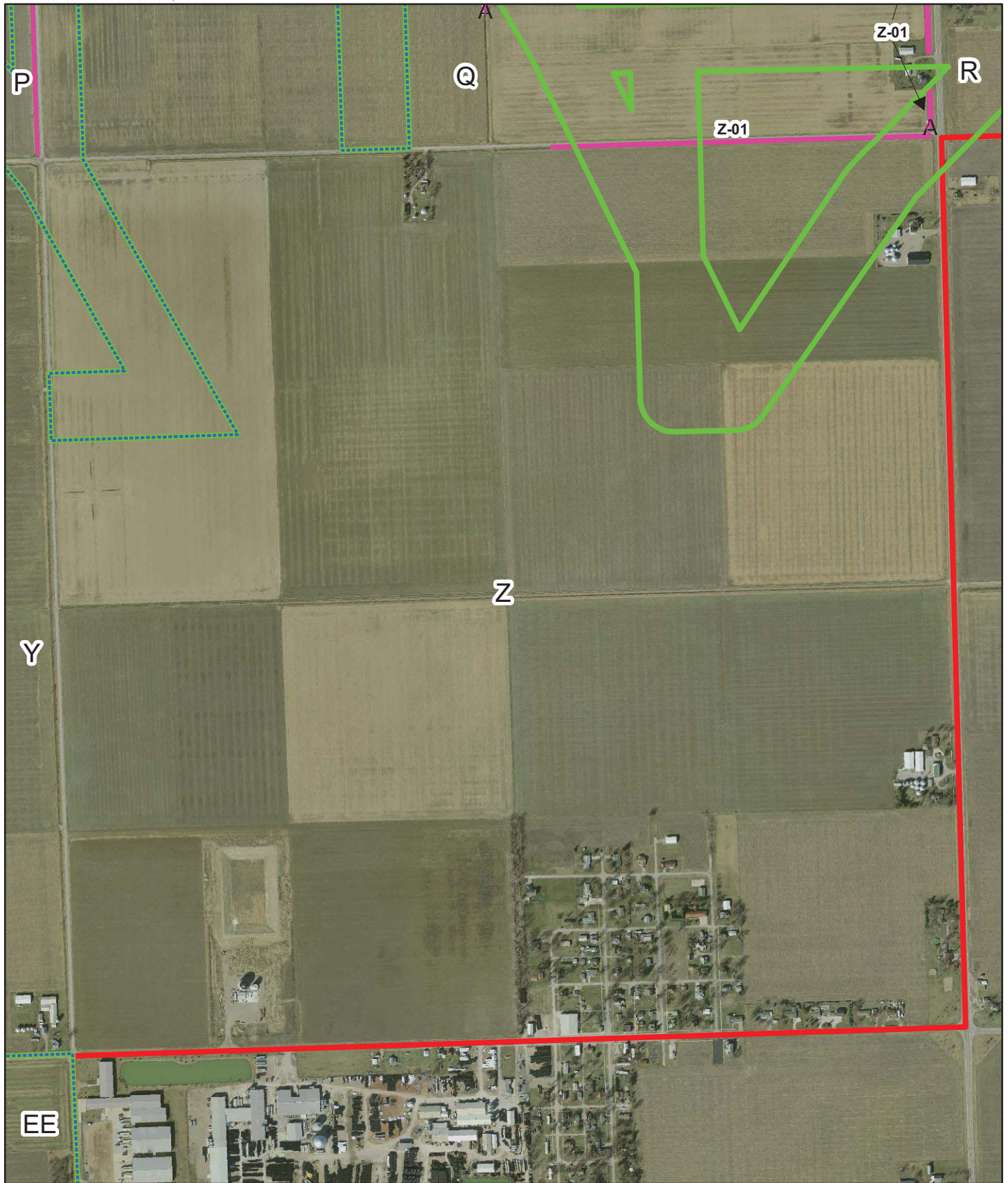
-  Upland Sample Point
 Wetland Sample Point
 Exhibit 8 Panel ID
 Current Proposed Corridor
 Overall Wetland Delineation Corridor
 Overall Project Boundary
 Non-Wetland Watercourse
-  Type 2 Wetland within Creek
 Type 2 Wetland within Ditch
 Type 7 Wooded Wetland

Paulding County, Ohio

Wetland Delineation Boundary Map

EXHIBIT 8 Y





Data Source(s): Westwood Field GPS Data (2013), Paulding County 2012 DOQ (Accessed 2013)



Westwood Professional Services, Inc.
7699 Anagram Drive
Eden Prairie, MN 55344

PHONE 952-937-5150
FAX 952-937-5822
TOLL FREE 1-888-937-5150

www.westwoodps.com

Legend

- () Upland Sample Point
- A Wetland Sample Point
- Exhibit 8 Panel ID
- Current Proposed Corridor
- Overall Wetland Delineation Corridor
- Overall Project Boundary
- Non-Wetland Watercourse
- Type 2 Wetland within Creek
- Type 2 Wetland within Ditch
- Type 7 Wooded Wetland

Northwest Ohio Wind Project

Paulding County, Ohio

Wetland Delineation Boundary Map



EXHIBIT 8 Z

This foregoing document was electronically filed with the Public Utilities

Commission of Ohio Docketing Information System on

5/28/2013 1:28:01 PM

in

Case No(s). 13-0197-EL-BGN

Summary: Application of Northwest Ohio Wind Energy - Appendix M Wetland Delineation Report Continued (Part 42) electronically filed by Teresa Orahod on behalf of Sally Bloomfield