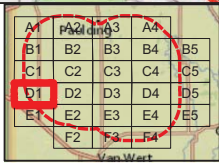


Data Source(s): Some data are approximate. Symbols are not representative of any dimension. OHIO (2013). ODNR Floodplain (1974). ODOT Waters (2011). Ohio Historical Online Mapping Database (2013). Railroad from Federal Railroad Administration (2010). Roads from Ohio Geographically Referenced Information Program (2009). Points of Interest from U.S. Geological Survey (2010). Ducks Unlimited (2007). and ODNR (1996). County, City and Townships Boundaries from Ohio.gov DOT (downloaded 2010). Land use data from ODNR (1980, 1996). USGS Topo and Inset Basemap from National Geographic Society. ESRI WMS (2013). National Wind (2013). and Westwood (2013).

Westwood
7889 Anagram Drive
Eden Prairie, MN 55344
PHONE: 952-837-5190
FAX: 952-837-5822
TOLL FREE: 1-888-837-5190
www.westwoodps.com



- Wind Turbine
- Underground Collection Line
- Access Road
- Laydown
- O&M
- Batch Plant
- Step-Up Facility
- Oil or Gas Well
- Water Well
- Archaeological Site
- Helipoint
- Grave Yard
- Place of Worship
- Hospital
- School
- Park
- Race Track
- Golf Course
- Fairgrounds
- Municipal Sports Facilities
- 100-Year Floodplain
- Delineated Wetland
- 138kv Transmission Line
- Gas Pipeline within Project area
- US Hwy
- State Hwy
- Railroad
- Project Boundary
- Project Boundary (5 Mile Buffer)
- City Boundary
- Township Boundary
- County Boundary

Northwest Ohio Wind Energy

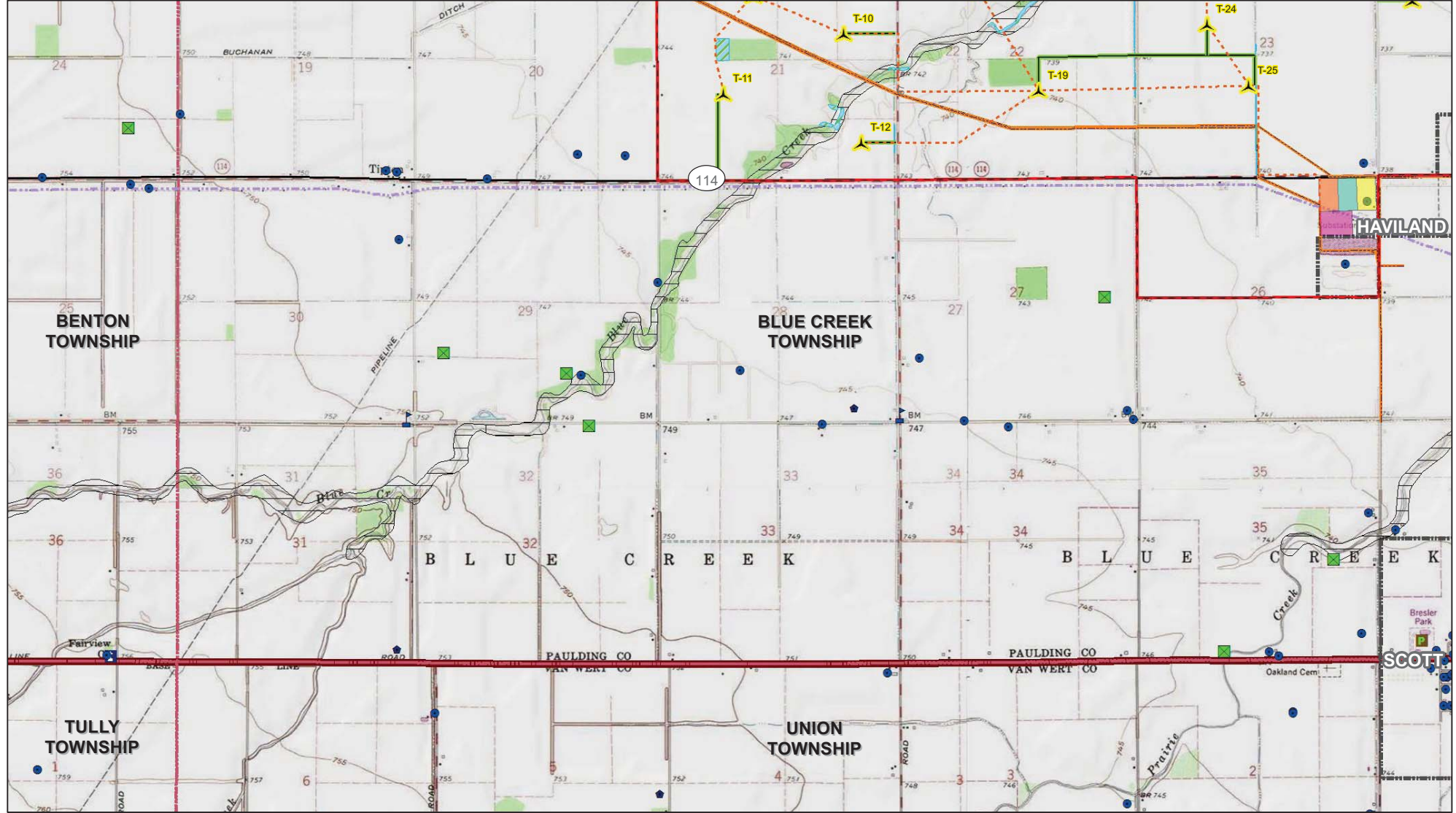
Paulding County, Ohio

Geography & Topography

Figure 5-1, D1

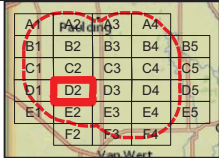
Map Scale - 1:24,000

0 2,000 Feet



Data Source(s): Some data are approximate. Symbols are not representative of any dimension. OHIO (2013); ODNR Floodplain (1974); ODOT Waters (2011); Ohio Historical Online Mapping Database (2013); Railroad from Federal Railroad Administration (2010); Roads from Ohio Geographically Referenced Information Program (2009); Points of Interest from U.S. Geological Survey (2010); Ducks Unlimited (2007); and ODNR (1996); County, City and Townships Boundaries from Ohio.gov DOT (downloaded 2010); Land use data from ODNR (1980, 1996); USGS Topo and Inset Basemap from National Geographic Society; ESRI WMS (2013); National Wind (2013); and Westwood (2013).

Westwood
7899 Anagram Drive
Eden Prairie, MN 55344
PHONE: 952-837-5190
FAX: 952-837-5822
TOLL FREE: 1-888-837-5190
www.westwoodps.com



- | | | | | |
|-----------------------------|---------------------|-------------|----------------------------------|----------------------------------|
| Wind Turbine | Oil or Gas Well | Hospital | Fairgrounds | 138kv Transmission Line |
| Underground Collection Line | Water Well | School | Municipal Sports Facilities | Gas Pipeline within Project area |
| Access Road | Archaeological Site | Park | 100-Year Floodplain | US Hwy |
| Laydown | Helipoint | Race Track | Delineated Wetland | State Hwy |
| O&M | Grave Yard | Golf Course | Project Boundary (5 Mile Buffer) | City Boundary |
| Batch Plant | Place of Worship | | Township Boundary | County Boundary |
| Step-Up Facility | | | | |

Northwest Ohio Wind Energy

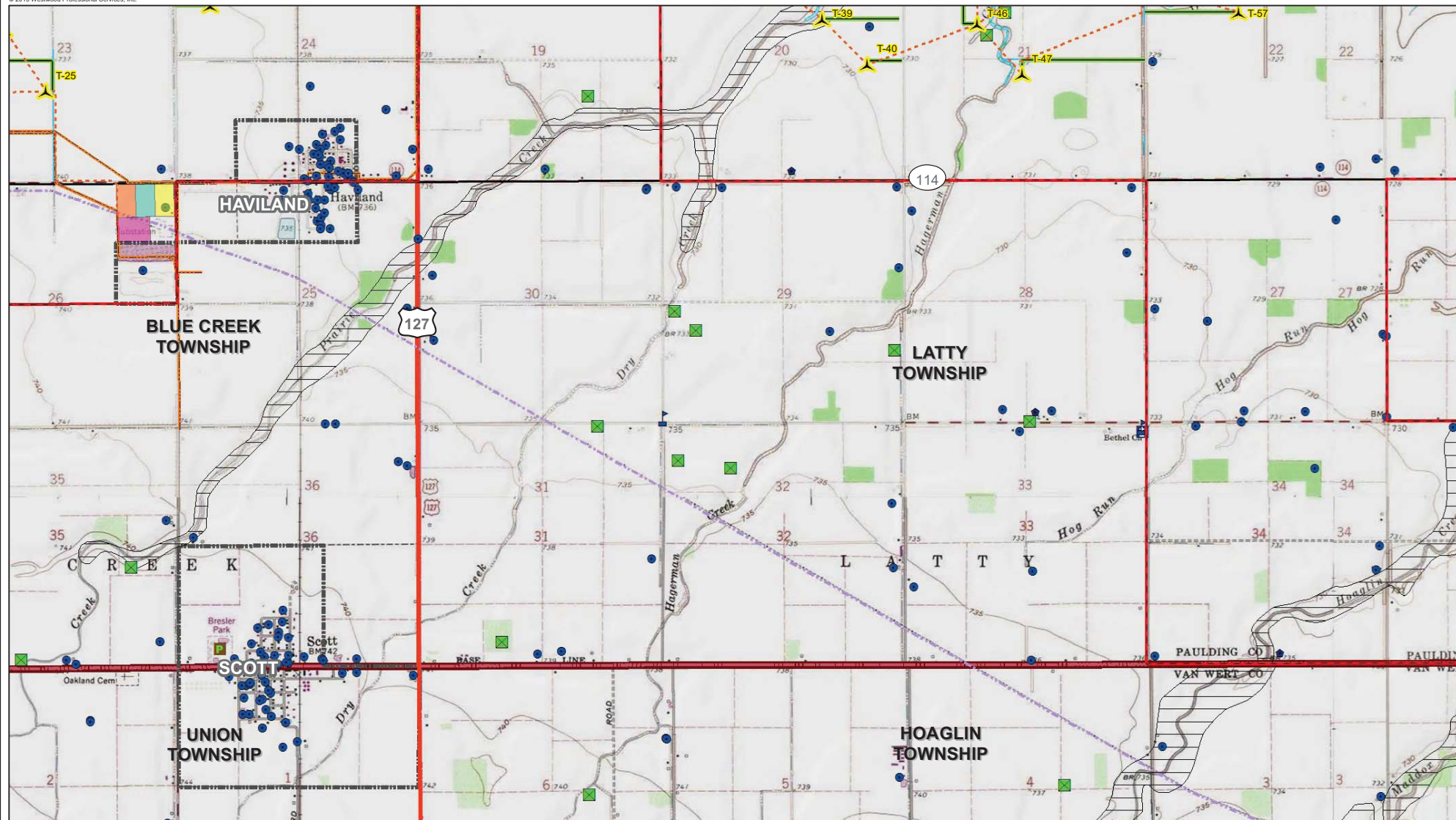
Paulding County, Ohio

Geography & Topography

Figure 5-1, D2

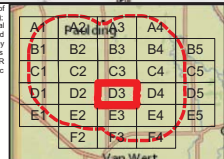
Map Scale -1:24,000

0 2,000 Feet



Data Source(s): Some data are approximate. Symbols are not representative of any dimension. OHIO (2013). ODNR Floodplain (1974). ODOT Waters (2011). Ohio Historical Online Mapping Database (2013). Railroad from Federal Railroad Administration (2010). Roads from Ohio Geographically Referenced Information Program (2009). Points of Interest from U.S. Geological Survey (2010). Ducks Unlimited (2007), and ODNR (1996). County, City and Township Boundaries from Ohio.gov DOT (downloaded 2010). Land use data from ODNR (1980, 1996). USGS Topo and Inset Basemap from National Geographic Society. ESRI WMS (2013); National Wind (2013); and Westwood (2013).

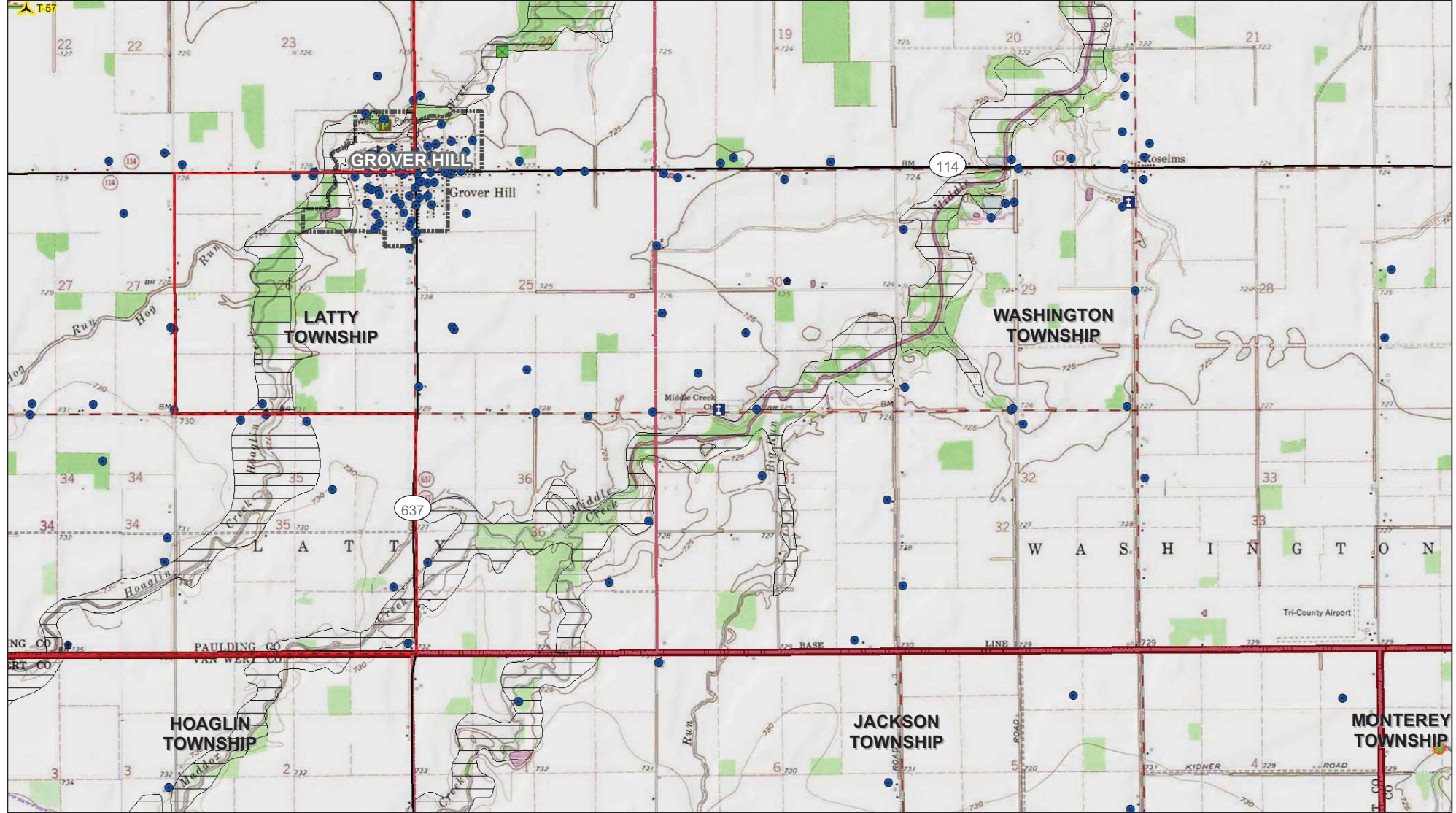
Westwood Professional Services, Inc.
7899 Anagram Drive
Eden Prairie, MN 55344
PHONE: 952-837-5198
FAX: 952-837-5822
TOLL FREE: 1-888-837-5198
www.westwoodps.com



- Wind Turbine
- Underground Collection Line
- Access Road
- Laydown
- O&M
- Batch Plant
- Step-Up Facility
- Oil or Gas Well
- Water Well
- Archaeological Site
- Heliport
- Grave Yard
- Place of Worship
- Hospital
- School
- Park
- Race Track
- Golf Course
- Fairgrounds
- Municipal Sports Facilities
- 100-Year Floodplain
- Delineated Wetland
- 138kv Transmission Line
- Gas Pipeline within Project area
- US Hwy
- State Hwy
- Railroad
- Project Boundary
- Project Boundary (5 Mile Buffer)
- City Boundary
- Township Boundary
- County Boundary

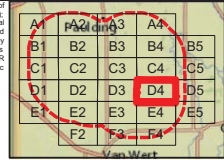
Northwest Ohio Wind Energy
Paulding County, Ohio
Geography & Topography
Figure 5-1, D3

Map Scale - 1:24,000
0 2,000 Feet



Data Sources: Some data are approximate. Symbols are not representative of any dimension. OHPO (2013); ODNR Floodplain (1974); ODOT Waters (2011); Ohio Historical Online Mapping Database (2013); Railroad from Federal Railroad Administration (2010); Roads from Ohio Geographically Referenced Information Program (2009); Points of Interest from U.S. Geological Survey (2010); Ducks Unlimited (2007); and ODNR (1996); County, City and Townships Boundaries from Ohio.gov DOT (downloaded 2010); Land use data from ODNR (1980, 1996); USGS Topo and Inset Basecamp from National Geographic Society; ESRI WMS (2013); National Wind (2013); and Westwood (2013).

Westwood Professional Services, Inc.
7898 Anagram Drive
Eden Prairie, MN 55344
PHONE: 952-837-5190
FAX: 952-837-5822
TOLL FREE: 1-888-837-5190
www.westwoodps.com



- Wind Turbine
- Oil or Gas Well
- Water Well
- Archaeological Site
- Heliport
- Grave Yard
- Place of Worship
- Hospital
- School
- Park
- Race Track
- Golf Course
- Fairgrounds
- Municipal Sports Facilities
- 100-Year Floodplain
- Delineated Wetland
- 138kv Transmission Line
- Gas Pipeline within Project area
- US Hwy
- State Hwy
- Railroad
- Project Boundary
- Project Boundary (5 Mile Buffer)
- City Boundary
- Township Boundary
- County Boundary

Northwest Ohio Wind Energy

Paulding County, Ohio

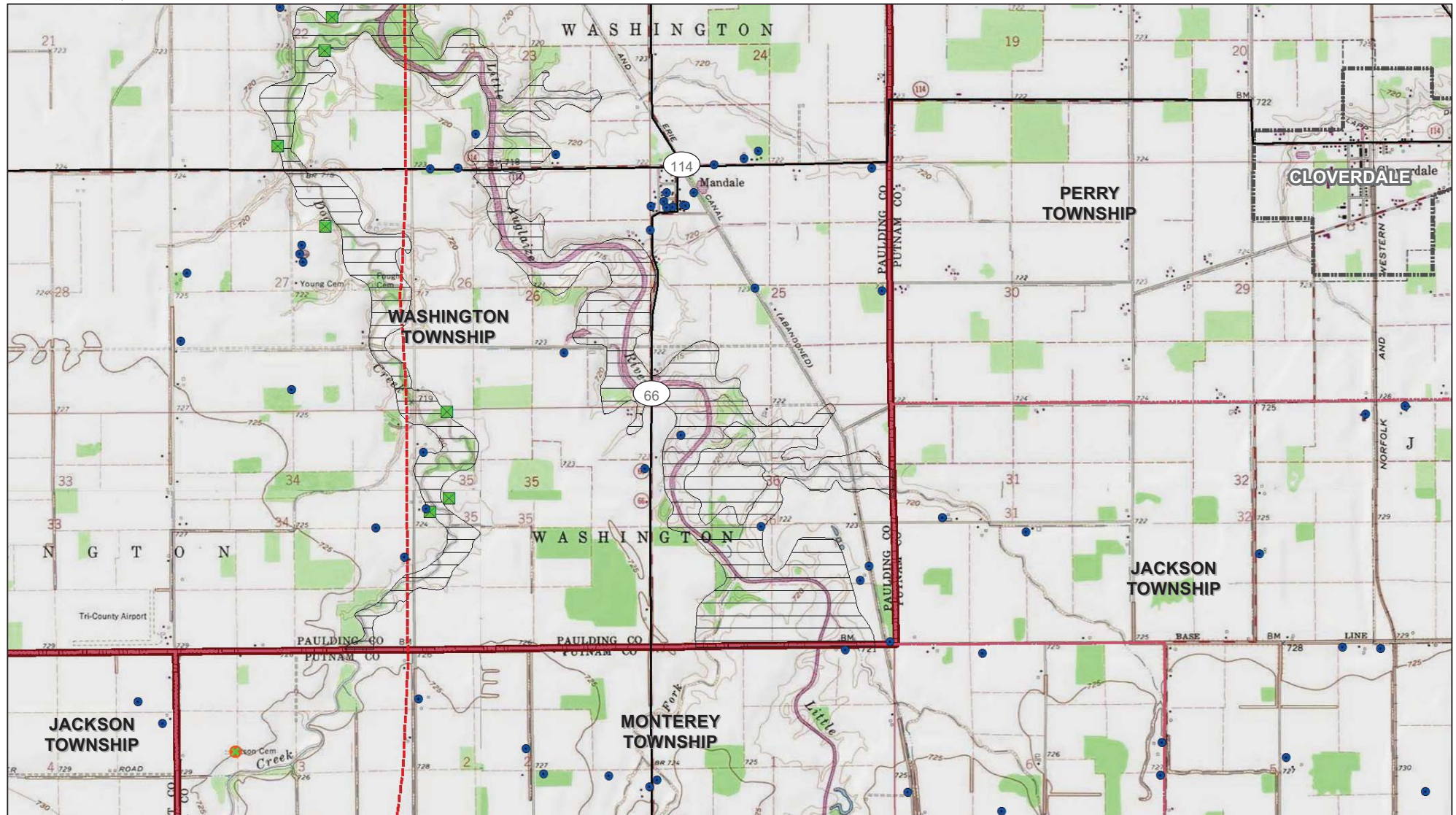
Geography & Topography

Figure 5-1, D4

N

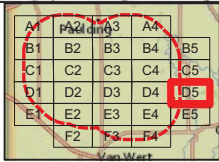
Map Scale - 1:24,000

0 2,000 Feet



Data Source(s): Some data are approximate. Symbols are not representative of any dimension. OHIO (2013); ODNR Floodplain (1974); ODOT Waters (2011); Ohio Historical Online Mapping Database (2013); Railroad from Federal Railroad Administration (2010); Roads from Ohio Geographically Referenced Information Program (2009); Points of Interest from U.S. Geological Survey (2010); Ducks Unlimited (2007); and ODNR (1996); County, City and Townships Boundaries from Ohio.gov DOT (downloaded 2010); Land use data from ODNR (1980, 1996); USGS Topo and Inset Basecamp from National Geographic Society; ESRI WMS (2013); National Wind (2013); and Westwood (2013).

7899 Anagram Drive
Eaton, Ohio 44129-0044
PHONE: 952-837-5190
FAX: 952-837-5822
TOLL FREE: 1-800-837-5190
www.westwoodps.com



- Wind Turbine
- Underground Collection Line
- Access Road
- Laydown
- O&M
- Batch Plant
- Step-Up Facility
- Oil or Gas Well
- Water Well
- Archaeological Site
- Heliport
- Grave Yard
- Place of Worship
- Hospital
- School
- Park
- Race Track
- Golf Course
- Fairgrounds
- Municipal Sports Facilities
- 100-Year Floodplain
- Delineated Wetland
- 138kv Transmission Line
- Gas Pipeline within Project area
- US Hwy
- State Hwy
- Railroad
- Project Boundary
- Project Boundary (5 Mile Buffer)
- City Boundary
- Township Boundary
- County Boundary

Northwest Ohio Wind Energy

Paulding County, Ohio

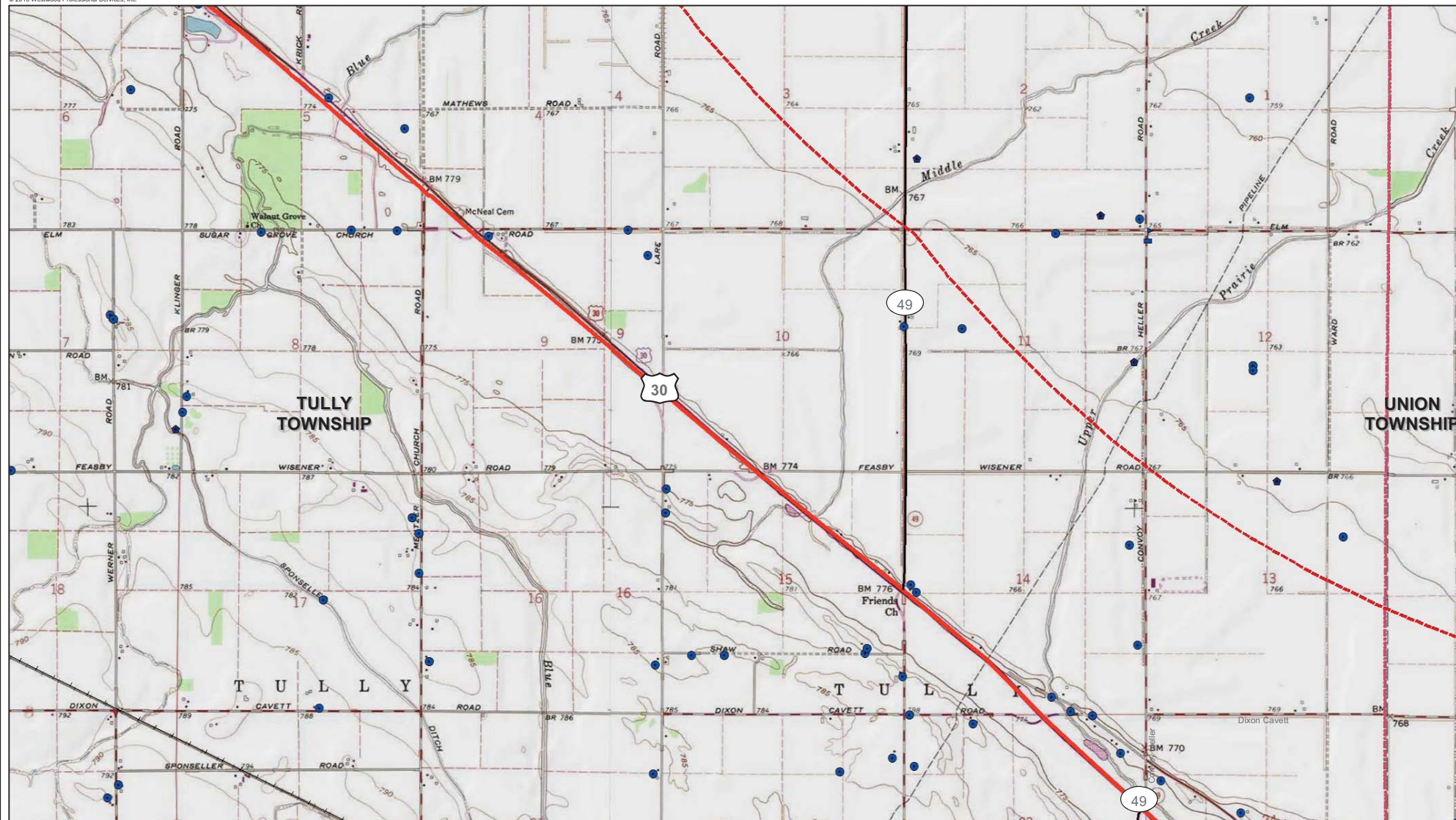
Geography & Topography

Figure 5-1, D5

N

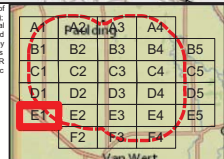
Map Scale - 1:24,000

0 2,000 Feet



Data Source(s): Some data are approximate. Symbols are not representative of any dimension. OHIO (2013). ODNr Floodplain (1974); ODOT Waters (2011). Ohio Historical Online Mapping Database (2013). Railroad from Federal Railroad Administration (2010). Roads from Ohio Geographically Referenced Information Program (2009). Points of Interest from U.S. Geological Survey (2010). Ducks Unlimited (2007), and ODNr (1996). County, City and Townships Boundaries from Ohio.gov DOT (downloaded 2010). Land use data from ODNr (1980, 1996). USGS Topo and Inset Basemap from National Geographic Society. ESRI WMS (2013); National Wind (2013); and Westwood (2013).

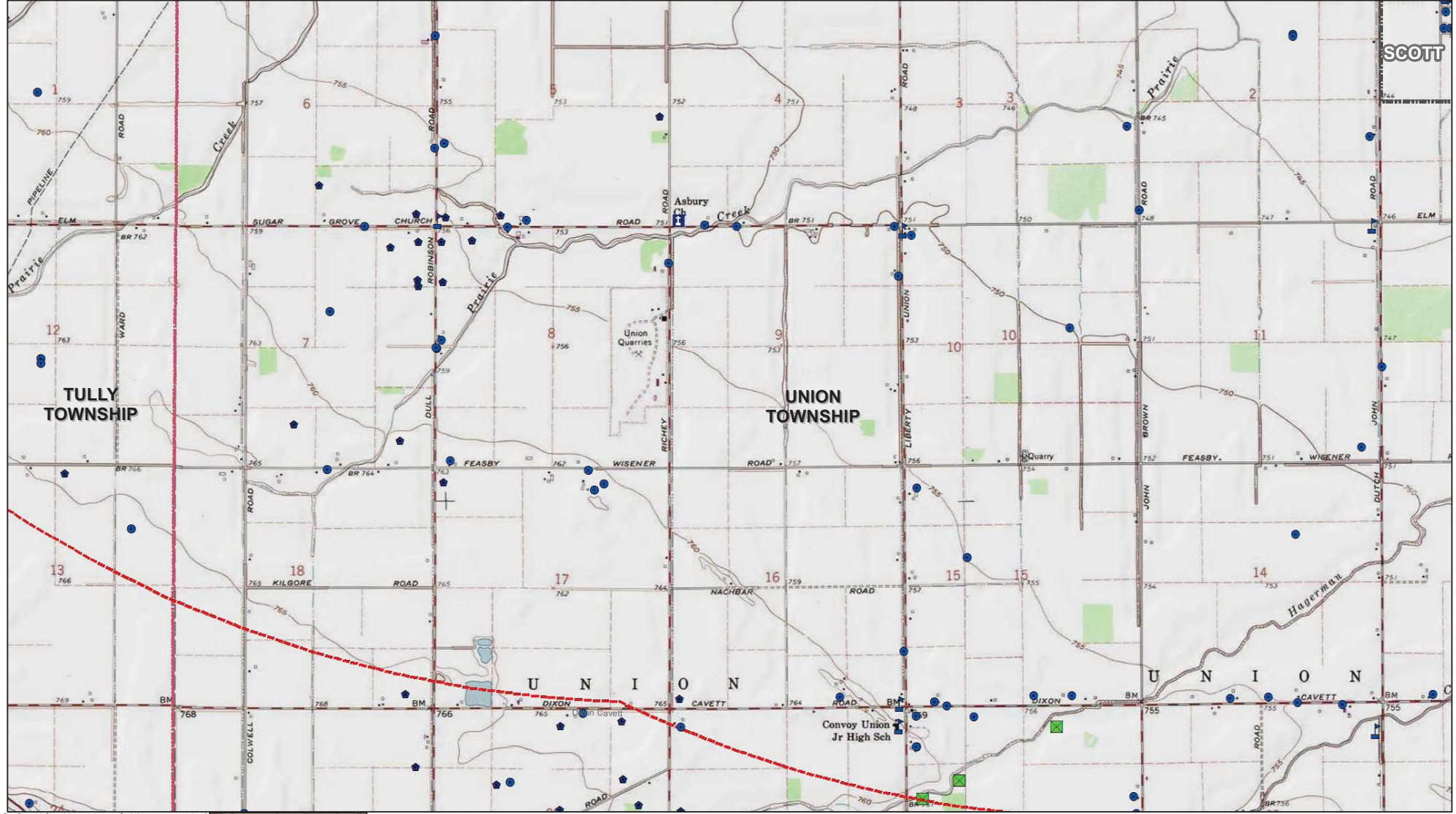
Westwood Professional Services, Inc.
7899 Annapolis Drive
Eden Prairie, MN 55344
PHONE: 952-837-5199
FAX: 952-837-5822
TOLL FREE: 1-888-837-5199
www.westwoodps.com



- Wind Turbine
- Underground Collection Line
- Access Road
- Laydown
- O&M
- Batch Plant
- Step-Up Facility
- Oil or Gas Well
- Water Well
- Archaeological Site
- Heliport
- Grave Yard
- Place of Worship
- Hospital
- School
- Park
- Race Track
- Golf Course
- Fairgrounds
- Municipal Sports Facilities
- 100-Year Floodplain
- Delineated Wetland
- 138kv Transmission Line
- Gas Pipeline within Project area
- US Hwy
- State Hwy
- Railroad
- Project Boundary
- Project Boundary (5 Mile Buffer)
- City Boundary
- Township Boundary
- County Boundary

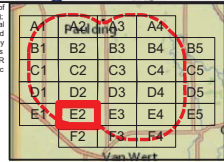
Northwest Ohio Wind Energy
Paulding County, Ohio
Geography & Topography
Figure 5-1, E1

Map Scale - 1:24,000
0 2,000 Feet



Data Source(s): Some data are approximate. Symbols are not representative of any dimension. OHIO (2013). ODNF Floodplain (1974). ODOT Waters (2011). Ohio Historical Online Mapping Database (2013). Railroad from Federal Railroad Administration (2010). Roads from Ohio Geographically Referenced Information Program (2009). Points of Interest from U.S. Geological Survey (2010). Ducks Unlimited (2007). and ODNF (1996). County, City and Townships boundaries from Ohio.gov DOT (downloaded 2010). Land use data from ODNF (1980, 1996). USGS Topo and Inset Basemap from National Geographic Society. ESRI WMS (2013). National Wind (2013). and Westwood (2013).

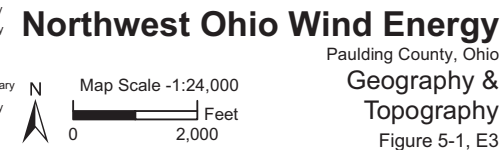
Westwood
7899 Anagram Drive
Eden Prairie, MN 55344
PHONE: 952-837-5190
FAX: 952-837-5822
TOLL FREE: 1-888-837-5190
www.westwoodps.com

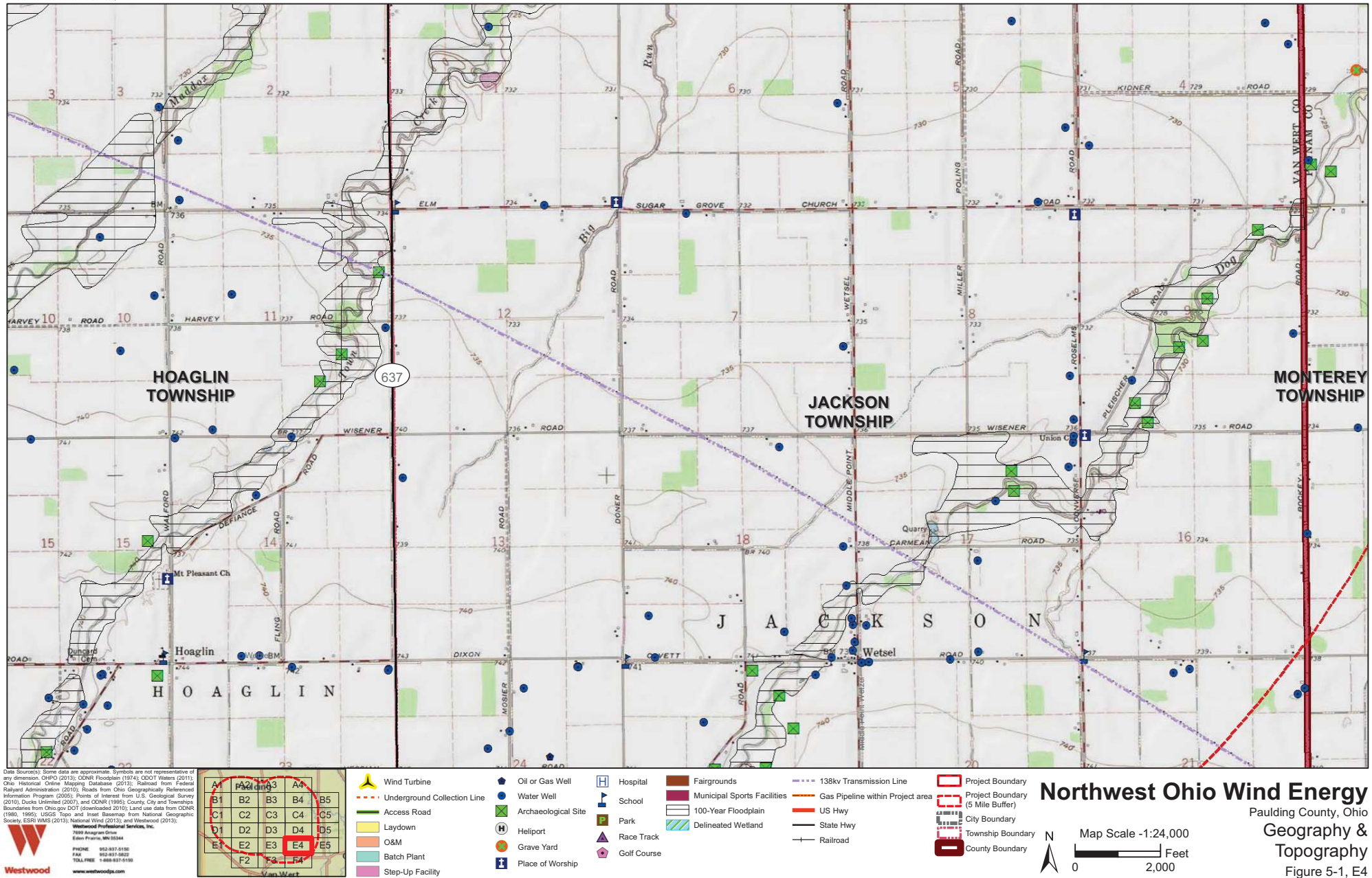


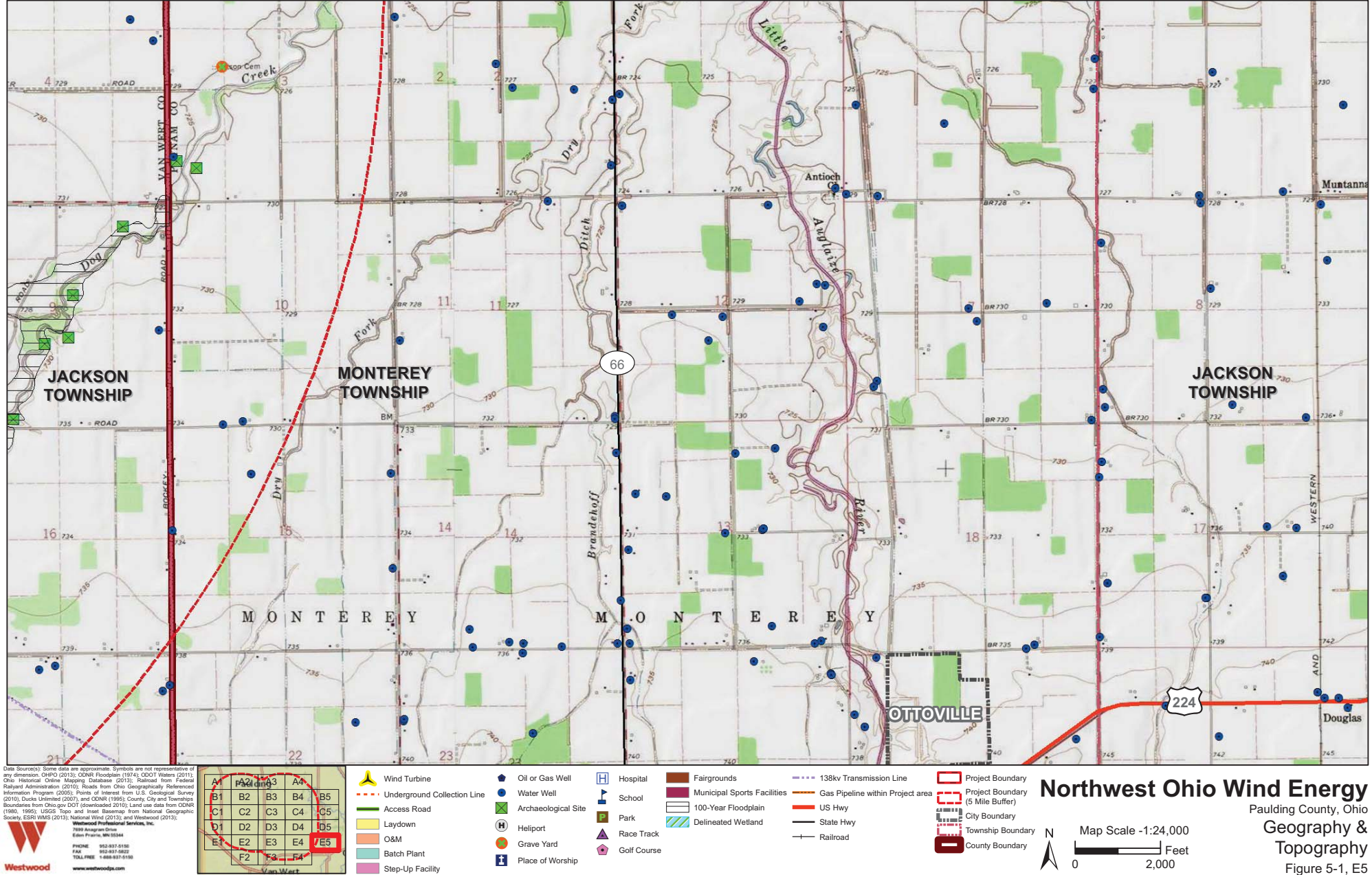
- | | | | | |
|-----------------------------|---------------------|--------------------|-----------------------------|----------------------------------|
| Wind Turbine | Oil or Gas Well | Hospital | Fairgrounds | 138kv Transmission Line |
| Underground Collection Line | Water Well | School | Municipal Sports Facilities | Gas Pipeline within Project area |
| Access Road | Archaeological Site | Park | 100-Year Floodplain | US Hwy |
| Laydown | Race Track | Delineated Wetland | State Hwy | Railroad |
| O&M | Batch Plant | Golf Course | Project Boundary | Project Boundary (5 Mile Buffer) |
| Step-Up Facility | Place of Worship | | City Boundary | Township Boundary |
| | | | County Boundary | |

Northwest Ohio Wind Energy
Paulding County, Ohio
Geography & Topography
Figure 5-1, E2

Map Scale - 1:24,000
0 2,000 Feet



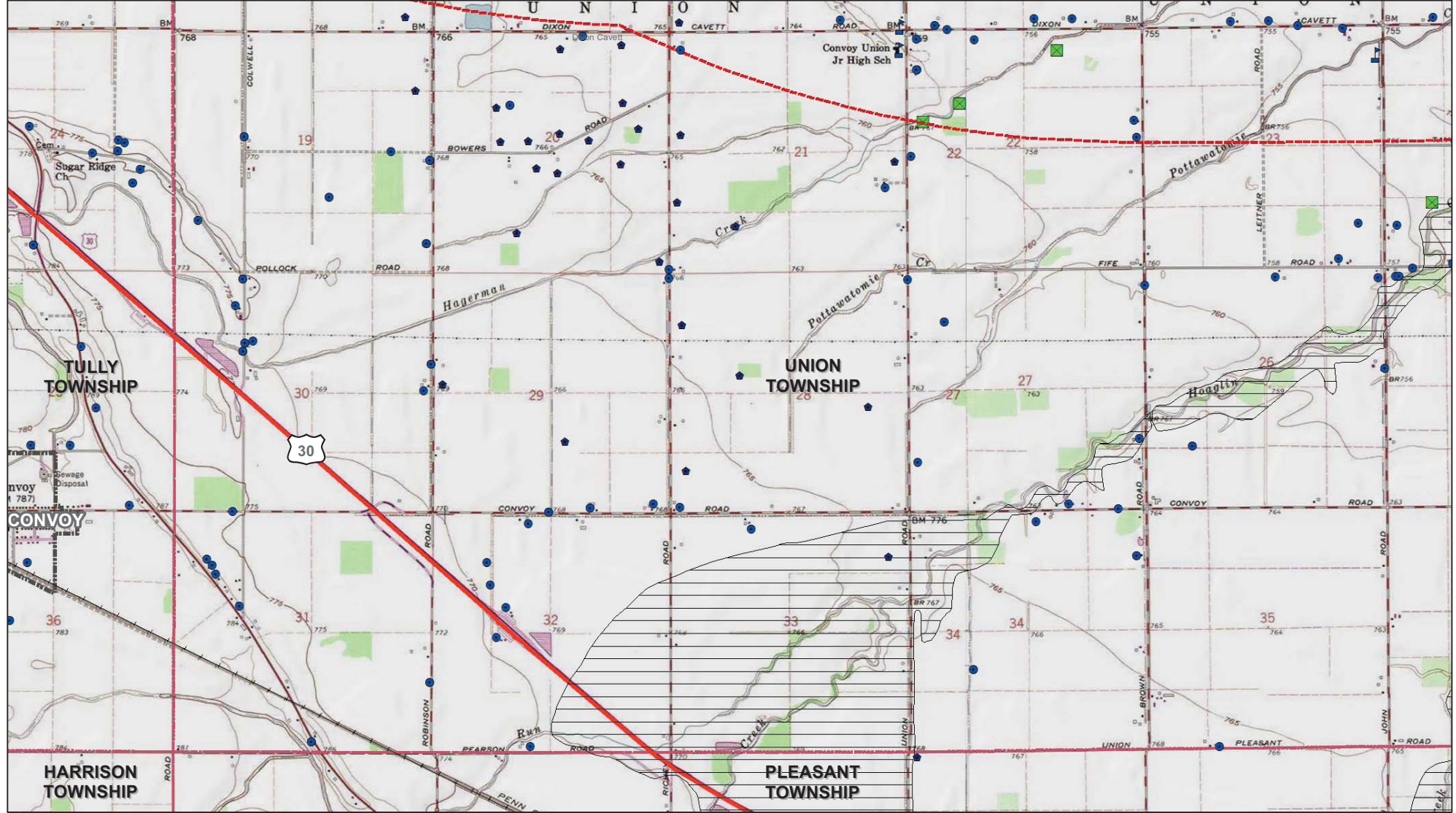




Data Sources: Some data are approximate. Symbols are not representative of any dimension. OHIO (2013); ODNR Floodplain (1974); ODOT Waters (2011); Ohio Historical Online Mapping Database (2013); Railroad from Federal Railroad Administration (2010); Roads from Ohio Geographically Referenced Information Program (2009); Points of Interest from U.S. Geological Survey (2010); Ducks Unlimited (2007); and ODNR (1995); County, City and Townships boundaries from Ohio.gov DOT (downloaded 2010); Land use data from ODNR (1980, 1995); USGS Topo and Inset Basecamp from National Geographic Society; ESRI WMS (2013); National Wind (2013); and Westwood (2013);

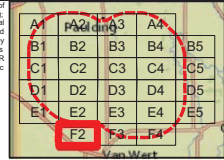
Westwood Professional Services, Inc.
 7899 Anagram Drive
 Eden Prairie, MN 55344
 PHONE: 952-837-5198
 FAX: 952-837-5822
 TOLL FREE: 1-888-837-5198
 www.westwoodps.com

A1	A2	A3	A4	A5
B1	B2	B3	B4	B5
C1	C2	C3	C4	C5
D1	D2	D3	D4	D5
E1	E2	E3	E4	E5
F1	F2	F3	F4	



Data Source(s): Some data are approximate. Symbols are not representative of any dimension. OHIO (2013); ODNR Floodplain (1974); ODOT Waters (2011); Ohio Historical Online Mapping Database (2013); Railroad from Federal Railroad Administration (2010); Roads from Ohio Geographically Referenced Information Program (2009); Points of Interest from U.S. Geological Survey (2010); Ducks Unlimited (2007); and ODNR (1996); County, City and Township Boundaries from Ohio.gov DOT (downloaded 2010); Land use data from ODNR (1980, 1996); USGS Topo and Inert Base map from National Geographic Society; ESRI WMS (2013); National Wind (2013); and Westwood (2013).

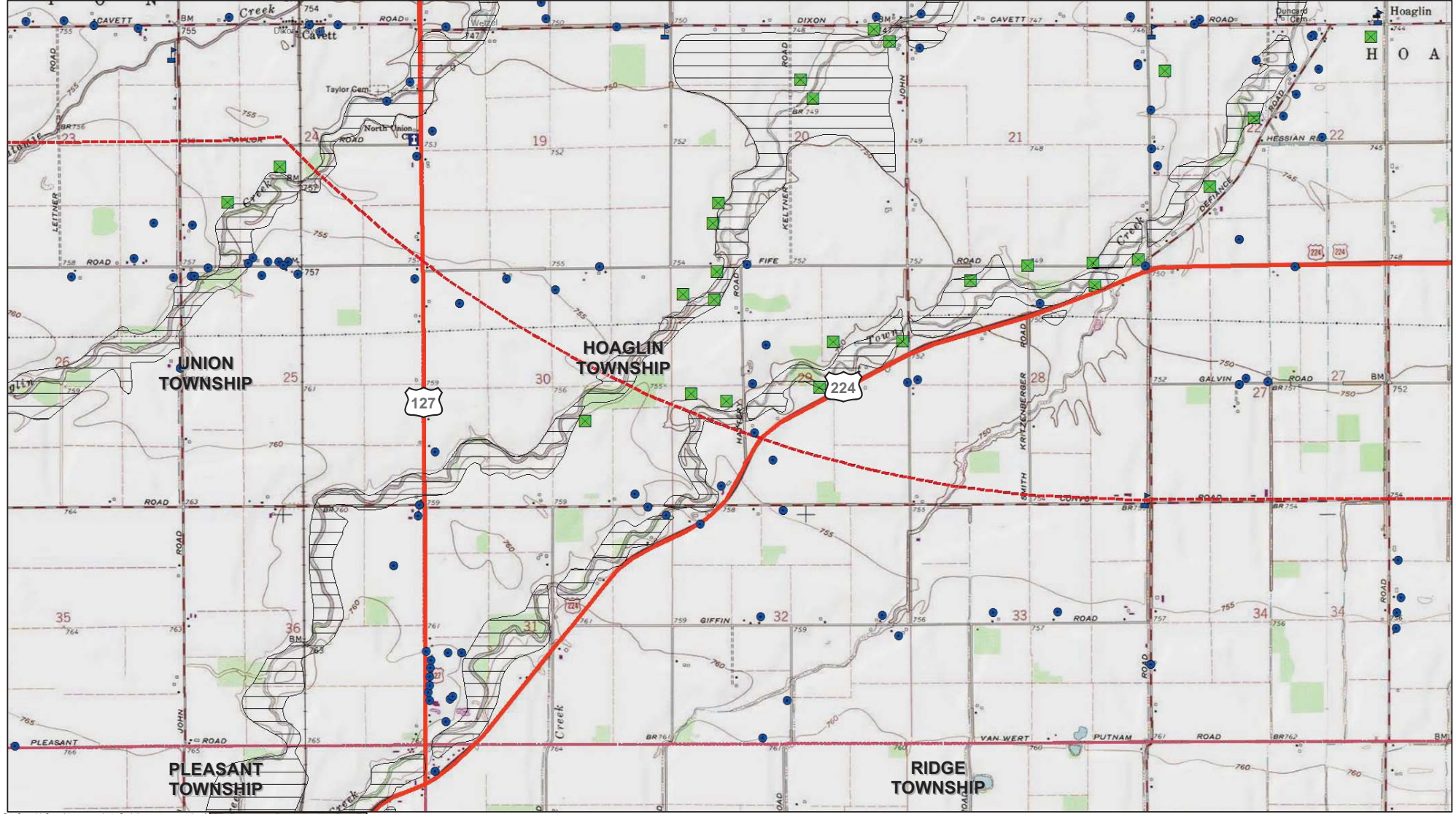
Westwood Professional Services, Inc.
7899 Annapolis Drive
Eden Prairie, MN 55344
PHONE: 952-837-5190
FAX: 952-837-5822
TOLL FREE: 1-888-837-5190
www.westwoodps.com



- | | | | | |
|-----------------------------|---------------------|------------------|----------------------------------|----------------------------------|
| Wind Turbine | Oil or Gas Well | Hospital | Fairgrounds | 138kv Transmission Line |
| Underground Collection Line | Water Well | School | Municipal Sports Facilities | Gas Pipeline within Project area |
| Access Road | Archaeological Site | Race Track | 100-Year Floodplain | US Hwy |
| Laydown | Helipoint | Golf Course | Delineated Wetland | State Hwy |
| O&M | Batch Plant | Place of Worship | Project Boundary | Railroad |
| Step-Up Facility | | | Project Boundary (5 Mile Buffer) | |
| | | | City Boundary | |
| | | | Township Boundary | |
| | | | County Boundary | |

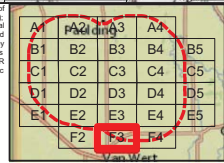
Northwest Ohio Wind Energy
Paulding County, Ohio
Geography & Topography
Figure 5-1, F2

Map Scale - 1:24,000
0 2,000 Feet



Date Source(s): Some data are approximate. Symbols are not representative of any dimension. OHPO (2013); ODNR Floodplain (1974); ODOT Waters (2011); Ohio Historical Online Mapping Database (2013); Railroad from Federal Railroad Administration (2010); Roads from Ohio Geographically Referenced Information Program (2009); Points of Interest from U.S. Geological Survey (2010); Ducks Unlimited (2007); and ODNR (1996); County, City and Township Boundaries from Ohio.gov DOT (downloaded 2010); Land use data from ODNR (1980, 1996); USGS Topo and Inset Basemap from National Geographic Society; ESRI WMS (2013); National Wind (2013); and Westwood (2013).

Westwood Professional Services, Inc.
7899 Annapolis Drive
Eden Prairie, MN 55344
PHONE: 952-837-5190
FAX: 952-837-5822
TOLL FREE: 1-888-837-5190
www.westwoodps.com

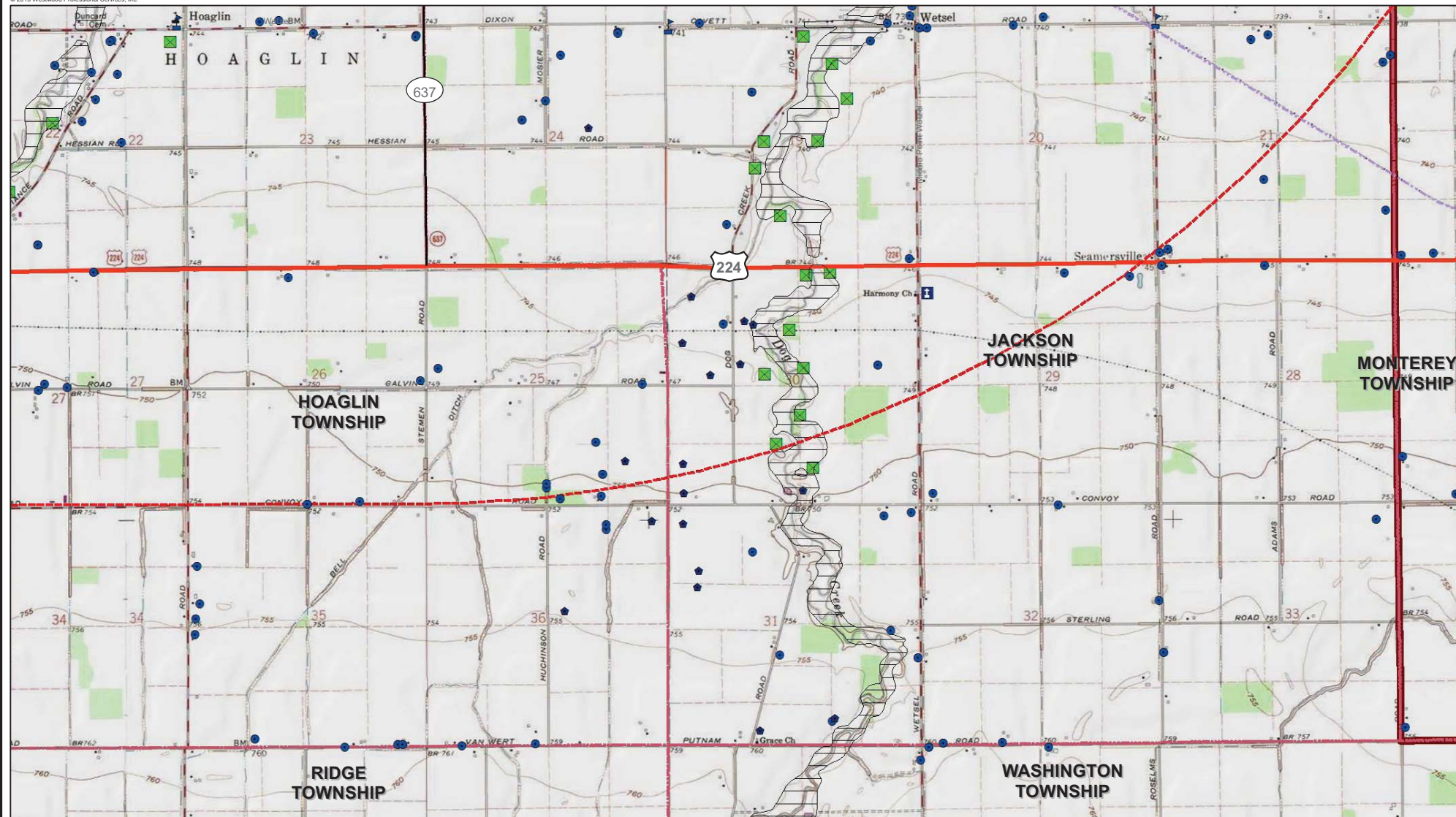


- | | | | | |
|-----------------------------|---------------------|--------------------|-----------------------------|----------------------------------|
| Wind Turbine | Oil or Gas Well | Hospital | Fairgrounds | 138kv Transmission Line |
| Underground Collection Line | Water Well | School | Municipal Sports Facilities | Gas Pipeline within Project area |
| Access Road | Archaeological Site | Park | 100-Year Floodplain | US Hwy |
| Laydown | Race Track | Delineated Wetland | State Hwy | Railroad |
| O&M | Batch Plant | Golf Course | Project Boundary | Project Boundary (5 Mile Buffer) |
| Step-Up Facility | Place of Worship | County Boundary | City Boundary | Township Boundary |

Northwest Ohio Wind Energy
Paulding County, Ohio
Geography & Topography
Figure 5-1, F3

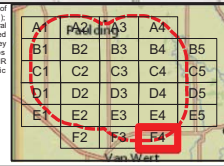
Map Scale - 1:24,000
0 2,000 Feet

© 2013 Westwood Professional Services, Inc.



Data Source(s): Some data are approximate. Symbols are not representative of any dimension. OHIO (2013); ODNR Floodplain (1974); ODOT Waters (2011); Ohio Historical Online Mapping Database (2013); Railroad from Federal Railroad Administration (2010); Roads from Ohio Geographically Referenced Information Program (2009); Points of Interest from U.S. Geological Survey (2010); Ducks Unlimited (2007); and ODNR (1995); County, City and Townships boundaries from Ohio.gov DOT (downloaded 2010); Land use data from ODNR (1980, 1995); USGS Topo and Inset Base map from National Geographic Society; ESRI WMS (2013); National Wind (2013); and Westwood (2013).

Westwood Professional Services, Inc.
7899 Anagram Drive
Eden Prairie, MN 55344
PHONE: 952-837-5190
FAX: 952-837-5822
TOLL FREE: 1-888-837-6192
www.westwoodps.com



- | | | | | |
|-----------------------------|---------------------|-------------|-----------------------------|----------------------------------|
| Wind Turbine | Oil or Gas Well | Hospital | Fairgrounds | 138kv Transmission Line |
| Underground Collection Line | Water Well | School | Municipal Sports Facilities | Gas Pipeline within Project area |
| Access Road | Archaeological Site | Park | 100-Year Floodplain | US Hwy |
| Laydown | Heliport | Race Track | Delineated Wetland | State Hwy |
| O&M | Grave Yard | Golf Course | Railroad | |
| Batch Plant | Place of Worship | | | |
| Step-Up Facility | | | | |

Northwest Ohio Wind Energy

Paulding County, Ohio

Geography & Topography

Figure 5-1, F4

Map Scale - 1:24,000

0 2,000 Feet

N

Project Boundary
Project Boundary (5 Mile Buffer)
City Boundary
Township Boundary
County Boundary

This foregoing document was electronically filed with the Public Utilities

Commission of Ohio Docketing Information System on

5/28/2013 11:30:37 AM

in

Case No(s). 13-0197-EL-BGN

Summary: Application of Northwest Ohio Wind Energy Figure 5-1 (Part 5b) electronically filed by Teresa Orahod on behalf of Sally Bloomfield