

---

G.3. Please submit digital photographs that depict an accurate characterization of the renewable generating facility. Please indicate the date(s) the photographs were taken. For existing facilities, these photographs must be submitted for your application to be reviewed. For proposed facilities or those under construction, photographs will be required to be filed within 30 days of the on-line date of the facility.

---

H. Certification Criteria 3: Placed-in-Service Date (Sec. 4928.64. (A)(1) O.R.C.)

The Renewable Energy Facility:

\_\_\_ has a placed-in-service date before January 1, 1998; (month/day/year):

X has a placed-in-service date on or after January 1, 1998; (month/day/year): 7/8/10

\_\_\_ has been modified or retrofitted on or after January 1, 1998; (month/day/year):

Please provide a detailed description of the modifications or retrofits made to the facility that rendered it eligible for consideration as a qualified renewable energy resource. In your description, please include the date of initial operation and the date of modification or retrofit to use a qualified renewable resource. Please include this description as an exhibit attached to your application filing and identify the subject matter in the heading of the exhibit.

\_\_\_ Not yet online; projected in-service date (month/day/year):

---

N. Meter Specifications

Metering Requirements

*If the renewable energy resource generating facility is 6 kW or below, the output may be measured with either an inverter meter or a utility grade meter.*

*All facilities that are larger than 6 kW must measure the output of the facility with a utility grade meter. Facilities that are larger than 6 kW and that are not measuring output with a utility grade meter will not be certified. OAC 4901:1-40-04 (D)(1)*

*Please only report on the meter or the meters used to measure the output from the facility which will be reported to the attribute tracking system.*

N.a The meter(s) that are measuring output from the facility are:

\_\_\_ Inverter Meter(s)

X Utility Grade Meter(s)

*N.1 Please provide the following information for each meter used in your system.*

N.1.a Manufacturer: GE

N.1.b Serial Number: ABB 02474974

N.1.c Type:

N.1.d Date of Last Certification: Generation start date 7/8/10

Date photograph taken:  
INSERT PHOTOGRAPH(S)



P333000000 012  
 TYPE AID  
 001 08642  
 0000 kWh  
 SERIAL # 02 928 426 ABB  
 Third Sun Solar & Wind Power  
 TEG02928426  
 CL200, 120 TO 480V, 4WY, 60Hz  
 FM 16S Watthour Meter  
 KH 21.6  
 PUR 24  
 TA 30A

Power Source:  
 UTILITY POWER

Power Source:  
 SOLAR POWER

Power Source:

Location of Photovoltaic System Disconnecting Means:  
 2ND FLOOR MEZZANINE ON SUNNY TOWERS  
 2ST FLOOR NORTH EXTERIOR WALL

Location of Utility Service Disconnecting Means:  
 1ST FLOOR MECHANICAL ROOM

Figure 2 Taken 9/12/11



Figure 3 Taken 9/12/11



Figure 4 Taken 5/25/10

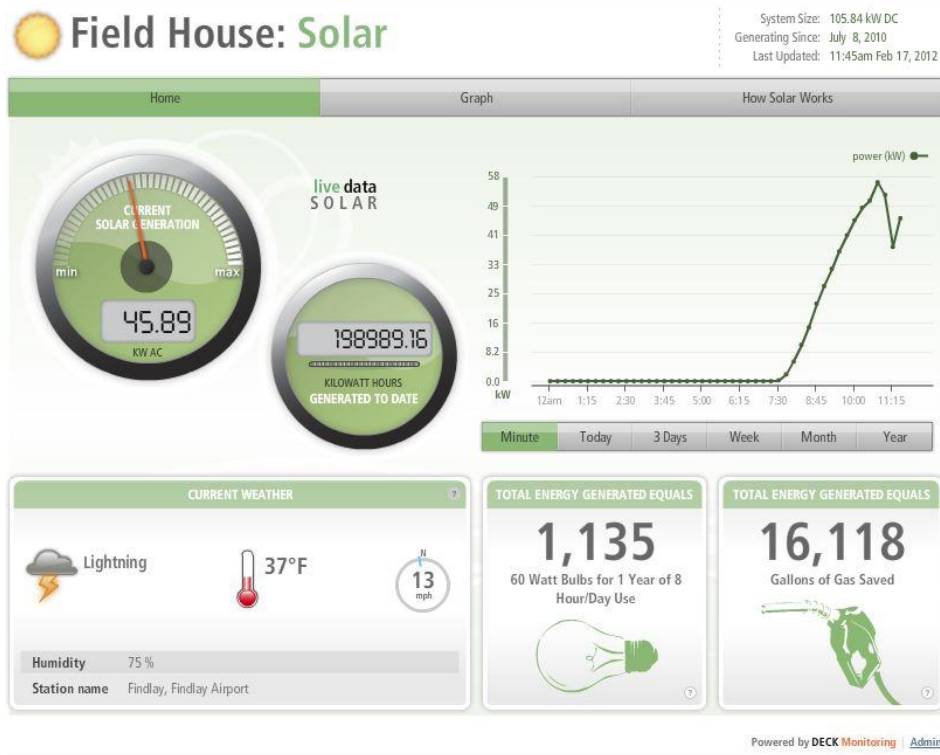


Figure 5 Taken 2/17/12

**This foregoing document was electronically filed with the Public Utilities**

**Commission of Ohio Docketing Information System on**

**2/22/2012 6:15:18 PM**

**in**

**Case No(s). 10-0101-EL-REN**

Summary: Reply electronically filed by Mr. John-Henry T Benton on behalf of NexGen Energy Partners