

FILE

# VORYS

Vorys, Sater, Seymour and Pease LLP  
Legal Counsel

52 East Gay St.  
PO Box 1008  
Columbus, Ohio 43216-1008

614.464.6400 | www.vorys.com

Founded 1909

Stephen M. Howard  
Direct Dial (614) 464-5401  
Direct Fax (614) 719-4772  
Email smhoward@vorys.com

August 18, 2010

Ms. Reneé Jenkins  
Secretary  
Public Utilities Commission of Ohio  
180 E. Broad Street, 11th Floor  
Columbus, OH 43215

RECEIVED-DOCKETING DIV  
2010 AUG 18 PM 4:42  
PUCO

Re: Case No. 08-940-GA-ALT  
Eastern Natural Gas Company  
Proofs of Publication

Dear Ms. Jenkins:

Pursuant to the July 14, 2010 Entry in this matter, I am writing to file two proofs of publication in this matter indicating that notice of the new rates for Eastern Natural Gas Company was implemented via newspaper notice within 30 days of the effective day of the revised rates as required in the Commission's Entry. The following table sets forth the various newspapers and dates that notice was published:

Name of Newspaper	Date of Notice
The Tribune Chronicle	July 17
Ashtabula Star Beacon	July 20

Thank you for your cooperation.

Sincerely yours,

*Stephen M. Howard*

Stephen M. Howard

SMH/jaw

Enclosures

cc: All Counsel of Record

This is to certify that the images appearing are an accurate and complete reproduction of a case file document delivered in the regular course of business.  
Technician \_\_\_\_\_ Date Processed 8-18-10

STATE OF OHIO  
TRUMBULL COUNTY

SS: CHARLES JARVIS

BEING DULY SWORN, UPON OATH STATES THAT HE IS  
THE PUBLISHER OF THE TRIBUNE CHRONICLE, (A DIVISION OF  
EASTERN OHIO NEWSPAPERS INC) A DAILY NEWSPAPER PRINTED  
IN THE CITY OF WARREN, COUNTY OF TRUMBULL, STATE OF OHIO  
AND OF GENERAL CIRCULATION IN THE CITY OF WARREN,  
TRUMBULL COUNTY, OHIO AND IS INDEPENDENT IN POLITICS.

THAT THE ATTACHED ADVERTISEMENT WAS  
PUBLISHED IN THE TRIBUNE CHRONICLE EVERY

SATURDAY FOR (1) ONE  
CONSECUTIVE WEEKS AND THAT THE FIRST INSERTION WAS  
ON SATURDAY THE 17th DAY  
OF JULY 2010

PAMELA ENZOR

SWORN TO BEFORE ME AND SUBSCRIBED IN MY PRESENCE ON  
THIS 19th DAY OF JULY 2010 AT WARREN

Constance A. Pacek  
NOTARY PUBLIC

CONSTANCE A. PACEK, Notary Public  
State of Ohio  
My Commission Expires March 7, 2011

SEAL

ADVERTISING COST: \$ 1432.60

# IMPORTANT NOTICE ABOUT YOUR GAS RATES

On May 1, 2009, Eastern Natural Gas Company (Eastern) filed in Case No. 08-2400 with the Public Utilities Commission of Ohio (PUCO) an application to make a change to its rate design to stabilize revenues and establish a demand side management program.

Following public hearings and an extensive review by the PUCO Staff, on June 16, 2009, the PUCO granted Eastern a change in its rate design and a new rider to fund a demand side management program (DSM Rider). The new rate design will move more of the fixed costs of delivering gas, such as pipes in the ground, meters, billing and meter readings, into the Customer Charge (a flat monthly rate) and will reduce rates based on gas usage. This results in spreading the costs for the delivery of gas more evenly throughout the year. Instead of a winter months when bills are already high due to increased usage, the Company's rate design will also change from a uniform rate for all General Service customers to a separate rate for Residential and Commercial customers.

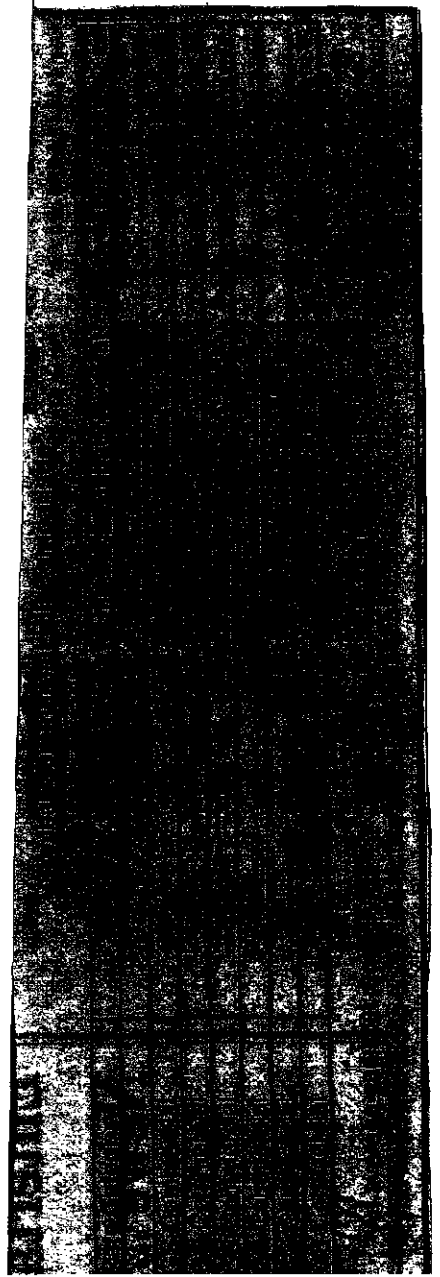
The rate change for Residential customers is an increase in the monthly Customer Charge from \$7.50 per month to \$9.75 per month. The variable cost component charge for usage-based charge for each Ccf of gas consumed during a month will decrease from \$0.2046 per Ccf to \$0.12500 per Ccf.

The rate change for Commercial customers is an increase in the monthly Customer Charge from \$7.50 per month to \$25.00 per month. The variable cost component charge for usage-based charge for each Ccf of gas consumed during a month will decrease from \$0.20462 per Ccf to \$0.15893 per Ccf. The new DSM Rider of \$1.03 per month will apply to all Residential and Commercial customers. The DSM program helps promote energy efficiency, such as home weatherization programs.

The rate design changes, as well as the DSM Rider will become effective on July 1, 2010. The rate design changes will result in a rate increase on your particular bill, but please remember that the DSM program will help offset some of the increase. To determine how these rates affect your monthly bill, please review this chart which reflects both the rate design and DSM rate changes.

Typical Residential Bill Comparison

Rate Category	Current Bill	Bill at New Rates	Difference
GS-Residential	\$18.93	\$25.79	\$6.86
GS-Residential	\$30.09	\$36.06	\$5.97
GS-Residential	\$63.41	\$66.87	\$3.46
GS-Residential	\$118.95	\$118.24	-\$0.71
GS-Residential	\$173.49	\$169.80	-\$3.69
GS-Residential	\$200.03	\$220.96	\$20.93
GS-Residential			
GS-Residential			
Typical Commercial Bill Comparison			
CCF	Current Bill	Bill at New Rates	Difference
1	\$18.93	\$25.79	\$6.86
2	\$30.09	\$36.06	\$5.97
3	\$63.41	\$66.87	\$3.46
4	\$118.95	\$118.24	-\$0.71
5	\$173.49	\$169.80	-\$3.69
6	\$200.03	\$220.96	\$20.93
7			
8			
9			
10			
11			
12			
13			
14			
15			
16			
17			
18			
19			
20			
21			
22			
23			
24			
25			
26			
27			
28			
29			
30			
31			
32			
33			
34			
35			
36			
37			
38			
39			
40			
41			
42			
43			
44			
45			
46			
47			
48			
49			
50			
51			
52			
53			
54			
55			
56			
57			
58			
59			
60			
61			
62			
63			
64			
65			
66			
67			
68			
69			
70			
71			
72			
73			
74			
75			
76			
77			
78			
79			
80			
81			
82			
83			
84			
85			
86			
87			
88			
89			
90			
91			
92			
93			
94			
95			
96			
97			
98			
99			
100			



Star Beacon of Ashtabula

ASHTABULA STAR BEA

Eastern Natural Gas Company  
PO Box 128  
Burghill, OH 44404

Reference: 37JY 2276835 A2651

Before the undersigned, a Notary Public of said County and State duly authorized to administer oaths, affirmation, etc., personally appeared, being duly sworn or affirmed, according to law, doth depose and say that he/she is a representative of Community Newspaper Holdings, Inc., a corporation organized and doing business under the laws of the State of Ohio, and publishing a newspaper known as the Star Beacon in the city of Ashtabula, and that as such he/she is familiar with the books, records, files and business of said Corporation and by reference to the files of said publication that attached advertisement was inserted.

The following correctly copied from the books and files of the aforesaid Corporation.

Published on: 7/20  
Cost: 1079.82  
Filed on: July 20, 2010

Name: Rebecca Squatrito  
Title: Legal Advertising Clerk

In Testimony Whereof, I have hereunto set my hand and affix my official seal, the day and year aforesaid:

Notary: Cora Sue Wilfong

My Commission Expires: \_\_\_\_\_

**CORA SUE WILFONG**, Notary Public  
State of Ohio  
My Commission Expires November 25, 2011

## IMPORTANT NOTICE

On May 1, 2009, Eastern Natural Gas Company with The Public Utilities Commission of Ohio (PUCO) design to stabilize revenues and establish a den

Following public hearings and an extensive PUCO granted Eastern a change in its rate management program (DSM Rider). The new delivering gas, such as pipes in the ground, m Charge (a flat monthly rate) and will reduce rate costs for the delivery of gas more evenly throughout the winter months when bills are already design will also change from a uniform rate for Residential and Commercial customers.

The rate change for Residential customer from \$7.50 per month to \$13.75 per month. The charge for each Ccf of gas consumed during \$0.12500 per Ccf.

The rate change for Commercial customer from \$7.50 per month to \$25.00 per month. The consumed during a month will decrease from \$

The new DSM Rider of \$1.03 per month for customers. The DSM program helps promote programs.

The rate design changes as well as the or after August 1, 2010. The actual increase of gas you use. To determine how these rates affect reflects both the rate design and DSM rate change.

### Typical Resid

Rate Category	CCF	Current Bill
GS-Residential	10	\$18.98
GS-Residential	20	\$30.09
GS-Residential	50	\$63.41
GS-Residential	100	\$118.95
GS-Residential	150	\$174.49
GS-Residential	200	\$230.03

### Typical Comm

Rate Category	CCF	Current Bill
GS-Commercial	50	\$63.41
GS-Commercial	100	\$118.95
GS-Commercial	200	\$230.03
GS-Commercial	500	\$563.27
GS-Commercial	1000	\$1,118.67
GS-Commercial	1500	\$1,674.67

\*An average gas cost recovery rate of \$0.83966 per  
If you have questions about this notice please co

## **IMPORTANT NOTICE ABOUT YOUR GAS RATES**

On May 1, 2009, Eastern Natural Gas Company (Eastern) filed in Case No. 08-940-GA-ALT with The Public Utilities Commission of Ohio (PUCO) an application to make a change in its rate design to stabilize revenues and establish a demand side management program.

Following public hearings and an extensive review by the PUCO Staff, on June 16, 2010 the PUCO granted Eastern a change in its rate design and a new rider to fund a demand side management program (DSM Rider). The new rate design will move more of the fixed costs for delivering gas, such as pipes in the ground, meters, billing and meter readings, into the Customer Charge (a flat monthly rate) and will reduce rates based on gas usage. This results in spreading the costs for the delivery of gas more evenly throughout the year instead of recovering most of the costs during the winter months when bills are already high due to increased usage. The Company's rate design will also change from a uniform rate for all General Service customers to a separate rate for Residential and Commercial customers.

The rate change for Residential customers is an increase in the monthly Customer Charge from \$7.50 per month to \$13.75 per month. The variable cost component charge or usage-based charge for each Ccf of gas consumed during a month will decrease from \$0.20462 per Ccf to \$0.12500 per Ccf.

The rate change for Commercial customers is an increase in the monthly Customer Charge from \$7.50 per month to \$25.00 per month. The variable cost component charge for each Ccf of gas consumed during a month will decrease from \$0.20462 per Ccf to \$0.15893 per Ccf.

The new DSM Rider of \$1.03 per month will apply to all Residential and Commercial customers. The DSM program helps promote energy efficiency, such as home weatherization programs.

The rate design changes as well as the DSM Rider will become effective for bills rendered on or after August 1, 2010. The actual increase on your particular bill will depend on how much natural gas you use. To determine how these rates affect your monthly bill, please review this chart, which reflects both the rate design and DSM rate changes:

### **Typical Residential Bill Comparison\***

Rate Category	CCF	Current Bill	Bill at New Rates	Difference
GS-Residential	10	\$18.98	\$25.79	\$6.81
GS-Residential	20	\$30.09	\$36.06	\$5.97
GS-Residential	50	\$63.41	\$66.87	\$3.46
GS-Residential	100	\$118.95	\$118.24	(\$0.71)
GS-Residential	150	\$174.49	\$169.60	(\$4.89)
GS-Residential	200	\$230.03	\$220.96	(\$9.07)

### **Typical Commercial Bill Comparison\***

Rate Category	CCF	Current Bill	Bill at New Rates	Difference
GS-Commercial	50	\$63.41	\$80.46	\$17.05
GS-Commercial	100	\$118.95	\$133.61	\$14.66
GS-Commercial	200	\$230.03	\$239.89	\$9.86
GS-Commercial	500	\$583.27	\$558.74	(\$24.53)
GS-Commercial	1000	\$1,118.67	\$1,090.16	(\$28.51)
GS-Commercial	1500	\$1,674.07	\$1,621.58	(\$52.49)

\*An average gas cost recovery rate of \$0.83966 per Ccf is included in this chart for illustration purposes. If you have questions about this notice please contact Eastern at (800) 232-1478 or FAX (330) 772-3502.