



Bricker & Eckler
ATTORNEYS AT LAW

COLUMBUS | CLEVELAND
CINCINNATI-DAYTON

BRICKER & ECKLER LLP
100 South Third Street
Columbus, Ohio 43215-4291
MAIN: 614.227.2300
FAX: 614.227.2390

www.bricker.com
info@bricker.com

Sally W. Bloomfield
614.227.2368
sbloomfield@bricker.com

RECEIVED DOCKETING DIV

2009 DEC -4 PM 4: 05

PUCO

FILE

December 4, 2009

Via Hand Delivery

Ms. Renee Jenkins
Administration/Docketing
Ohio Power Siting Board
180 East Broad Street, 11th Floor
Columbus, Ohio 43215-3793

Re: Hardin Wind Energy LLC, Case No. 09-479-EL-BGN
Map depicting construction phases

Dear Ms. Jenkins:

In response to a request by the Staff of December 3, 2009 relating to the Supplemental Information and Request filed by Hardin Wind Energy LLC on November 19, 2009, attached please a map depicting the facility, including numbered turbine locations, access roads, and collection lines, and illustrating the portions of the facility that will be constructed in each phase. Note that the map is labeled "Hardin Indiana Bat Survey" but this does have the information requested.

If you have any questions, please call me at the number listed above.

Sincerely,

Sally W. Bloomfield

Attachment

Cc: Parties of Record

This is to certify that the images appearing are an accurate and complete reproduction of a case file document delivered in the regular course of business.
Technician Sus Date Processed DEC 04 2009



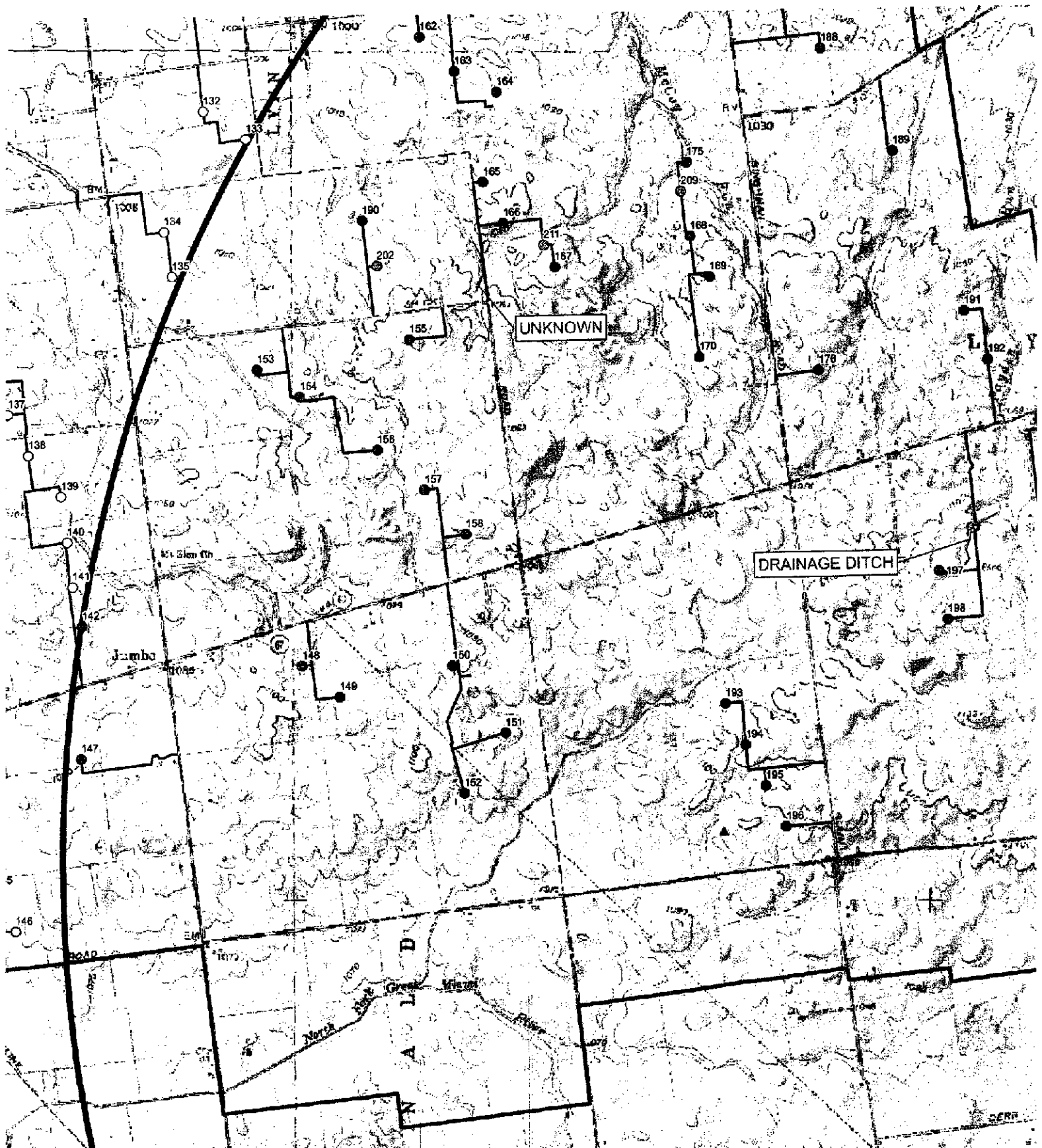
NOTES:

- Field verified streams as of September 2009.
- Project facilities as of October 2009
- Project study area as of July 2009

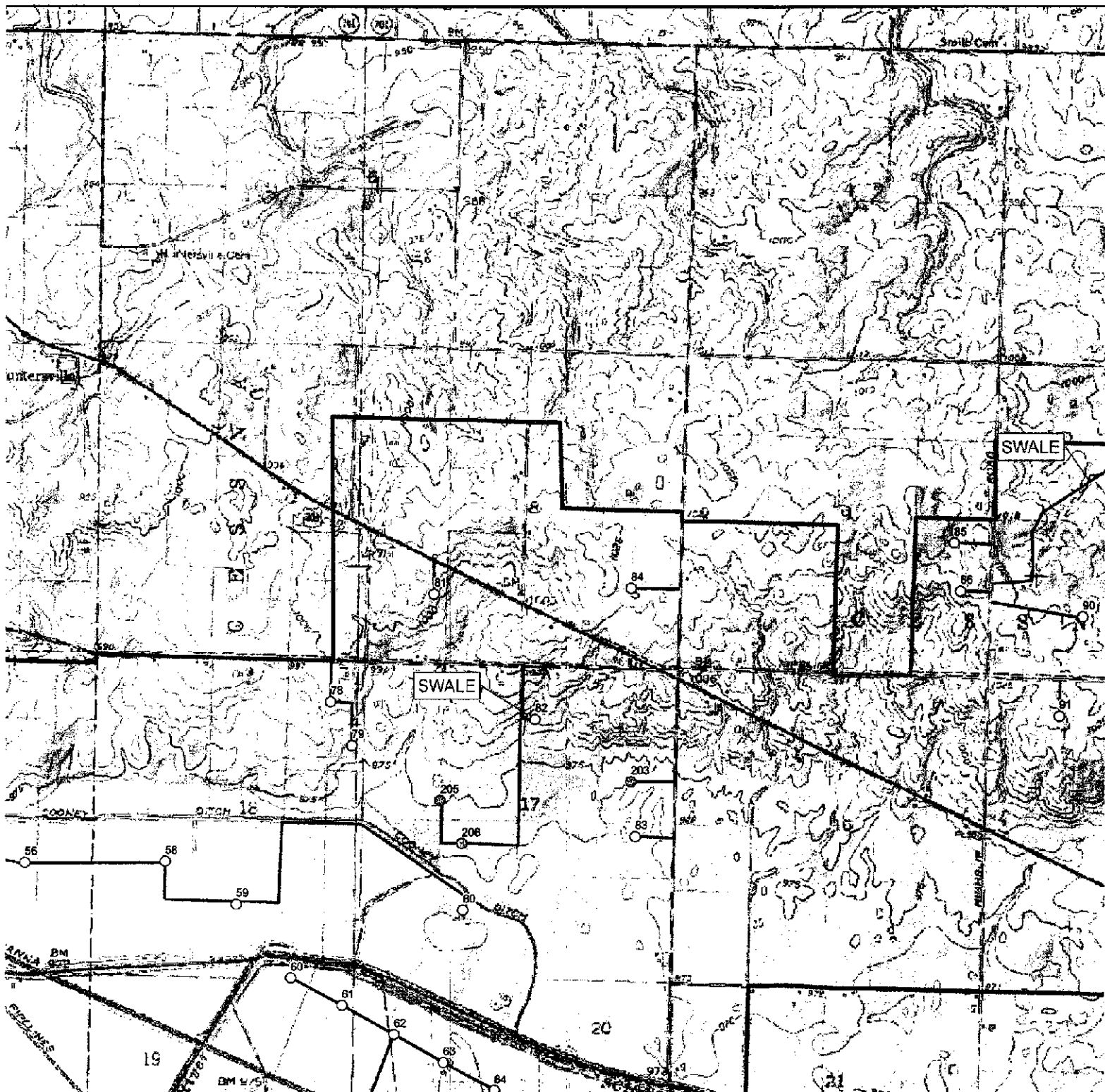
1,000



November 20







ardin County, Ohio

Indiana Bat Survey

- ☐ Substation Location
- ☐ Project Study Area
- ☐ 5 Mile Bat Buffer
- ☐ Streams

