

NC
FILE

09-648-GA-CSS

49

RECEIVED-DOCKETING DIV

2009 JUL 27 PM 4: 27

606 Fox Chase Way
Maineville, OH 45039
(513) 697-8160

July 24, 2009 (update)

PUCO

Public Utilities Commission
Docketing Division
180 E. Broad Street
Columbus, OH 43215-3793

RE: Formal Complaint against Duke Energy case id: SWIL03190940

Dear Mr. Watson & Docketing Division:

I am filing a formal complaint on account #7190-2053-06-3, and Duke Energy is my utility company.

The complaint centers around charges from them that are unjust and unreasonable, and that Duke Energy has provided inadequate service, and that they have failed to follow its rules and regulations on file with the Commission.

I received a letter from Duke Energy dated March 12, 2009, stating that a test of gas meter 937630, conducted on February 26, 2009, revealed that the meter did not register with the commission guidelines for accuracy. The meter was installed on May 15, 2008, replacing a meter that Duke Energy said was malfunctioning so consequently, they rebilled my account \$1,012.49, (not \$1,057.01 math error) for a total of 13 months of estimated past usage (unreasonable)*.

After contacting Duke Energy on March 18, 2009, they refused to credit my account for the faulty gas meter from May 15, 2008, to February 5, 2009, Debbie Hawkins Supervisor telling me to contact PUCO. Subsequently, Mr. Hawkins contacted them only to get a credit offer of \$.18, on the bill (unreasonable).

In spite of a good energy audit by Duke Energy's service, cutting back the thermostat to 60 degrees, and putting the hot water tank on vacation after showering, my bills kept increasing.

Since two meters have gone bad, I do not know if the new one (#000936031) installed on February 5, 2009, is working properly.

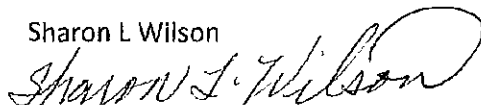
I would like PUCO to order Duke Energy to credit my account \$800.23, (not \$812.67 math error), from the period of May 15, 2008, to February 5, 2009, for charges incurred due to a faulty gas meter #000937630, see Duke letter of March 12, 2009.

*I would seek a credit of \$973.56, not \$955.31, from the 5/18/07-6/19/07, to the May 19, 2008, bills due to defective meter 000437268.

The March 16 to April 19, 2007, bill states the past 12 months of gas usage was 117 CCF for 12 months therefore, @ \$.87CCF = \$101.79 total gas charges for the year.

I would seek an order not to disconnect my utilities until this matter is resolved in a preliminary hearing.

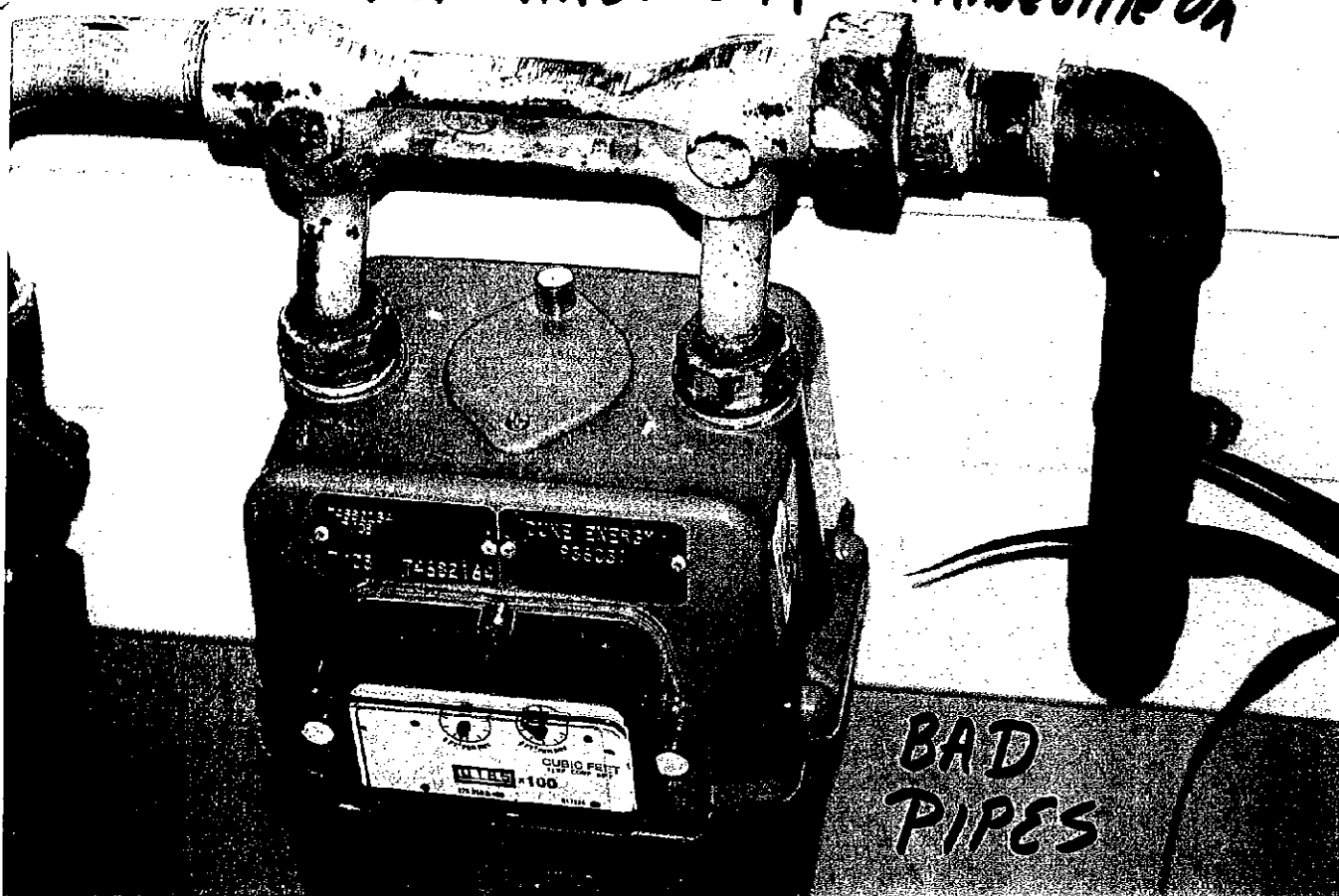
Sharon L Wilson



This is to certify that the images appearing are an accurate and complete reproduction of a case file document delivered in the regular course of business
Technician Am Date Processed 7/28/09

Sharon
Wilson

606 FOX CHASE WAY MAINEVILLE OH



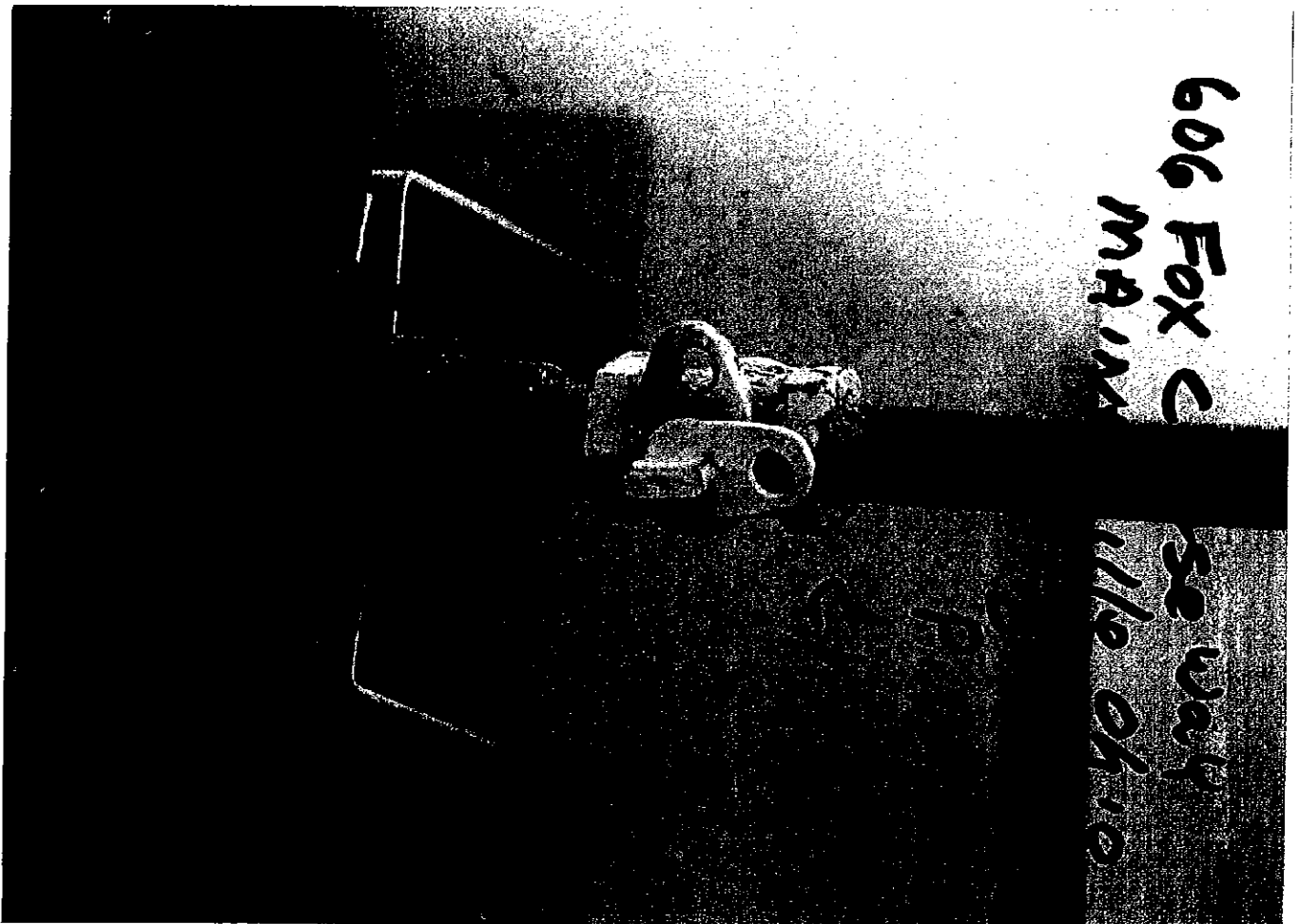
606 FOX CHASE WAY
MAINEVILLE
OHIO



SHARON
WILSON

606 FOX
CHASE WAY
MAINEVILLE,
OHIO

BAD PIPES
CAULKING



606 FOX C
CHASE WAY
MAINEVILLE OHIO

DISCONNECT NOTICE

Account Number 7190-2053-06-3

70 13

Due Date	Amount Due
Nov 7, 2008	\$ 1,204.96

\$ _____ \$ _____
 HeatShare Contribution Amount Enclosed
 (for Customer Assistance)



00001453 CIGET ZA 08290 ZIPCODE 13 YYYNN 1oz

Sharon Wilson
 606 Fox Chase Way
 Maineville OH 45039-9399

PO Box 9001076
 Louisville KY 40290-1076

410 00001204963 71902053063 110720084 00001223038

DISCONNECT NOTICE

1 PLEASE RETURN THE TOP PORTION WITH YOUR PAYMENT. 1

Page 1 of 3

Name /Service Address	For Inquiries Call	Account Number
Sharon Wilson 606 Fox Chase WY Maineville OH 45039	Duke Energy 513-651-5100 1-800-648-7777 IGSenergy: Interstate Gas 1-800-280-4474	7190-2053-06-3

Mail Payments To	Account Information
PO Box 9001076 Louisville KY 40290-1076	Payments after Oct 16 not included Last payment received Oct 14 Bill prepared on Oct 16, 2008 Next meter reading Nov 14, 2008

IMPORTANT: If your service has not yet been disconnected, please pay \$892.65 immediately to avoid disconnection.

If your service is disconnected for non payment, in addition to a reconnection charge, you will be required to pay an additional deposit in the amount of \$154.00 before service is restored.

Meter	Number	Reading Date From To	Days	Meter Reading Previous	Present	Usage
Gas	000937630	Sep 16 Oct 15	29	37E	50	13
Elec	095463367	Sep 16 Oct 15	29	46107E	46886	779

Gas - Residential	
Usage - 13 CCF	
Duke Energy - Rate FTRT	\$ 24.54
IGSenergy: - Rate IS05	12.99
Interstate Gas	
Current Gas Charges	\$ 37.53

Electric - Residential	
Usage - 779 kWh	
Duke Energy - Rate RS	\$ 95.27
Current Electric Charges	\$ 95.27

Current Billing	
Amt Due - Previous Bill	\$ 1,258.54
Payment(s) Received	203.05cr
Late Payment Charge(s)	15.83
Balance Forward	1,071.32
Current Gas Charges	37.53
Current Electric Charges	95.27
Taxes	0.84
Current Amount Due	\$ 1,204.96

- \$ 132.80

1072.16

annual budget billing \$ 201.00

Conf # 110454

3.50 #3009
132.80

136.30

Conf #

15776745

ck 3006

DISCONNECT NOTICE

Due Date	Amount Due	After Nov 7, 2008
Nov 7, 2008	\$ 1,204.96	\$ 1,223.03



visit us at www.duke-energy.com

Bill Payment Made Easy

e-Bill - View and pay your bill for free at www.duke-energy.com

BillPayer 2000® - Automatically pay from your checking account for 30¢/transaction - enroll at 1-800-991-7771

Speedpay® - Pay by phone 1-877-596-5068 with credit card or check a convenience fee will be charged.

PAYMENT OF BILLS

In order to avoid paying a late charge, please mail your payment to Duke Energy several days before the due date. Or, if you prefer, you may pay by phone through Speedpay, pay online with e-Bill, or pay automatically through BillPayer 2000®. Payments can also be made at a Duke Energy office or Pay Agent location. For more information about our bill payment options, please visit us at www.duke-energy.com or call 1-800-544-6900.

Disconnection of your utility service(s) will not result from failure to pay any non-larified or non-regulated products or services.

Under state law, the amount you are being billed for gas includes: (1) 4.89% State Excise Tax, (2) natural gas distribution taxes that have been in effect since 2001 and are currently at \$.01593 for the first 1,000 CCF, \$.00877 for the next 19,000 CCF and \$.00411 for all additional CCF and, (3) Assessments to assist in the support of the operations of the PUCO and the Office of the Consumers Counsel that have been in effect since 1912 and 1977 respectively.

Under state law, the amount you are being billed for electric includes: (1) kilowatt-hour taxes that have been in effect since 2001 and are currently at \$.00465 for the first 2,000 kWh, \$.00419 for the next 13,000 kWh and \$.00363 for all additional kWh and, (2) Assessments to assist in the support of the PUCO and the Office of the Consumers Counsel that have been in effect since 1912 and 1977 respectively.

EXPLANATION OF BILL LANGUAGE

(The following terms will not appear on every bill)

CCF	Gas usage, measured in hundreds of cubic feet.	Generation Charges	Charges associated with the production of electricity.
CR	Credited amount.	Generation Riders (Electric)	Charges to recover certain costs related to the production of electricity.
Current Charges (Gas and Electric)	Total of all charges based on usage during the current billing period for gas and electric services.	Kilowatt-hour (kWh)	The unit of measure for the electricity you use. For example, you use one kWh of electricity to light a 100 watt light bulb for 10 hours.
Customer Charge	The fixed monthly basic distribution charge to partially cover costs for billing, meter reading, service line maintenance, and equipment.	Late Payment Charge	A 1.5% late charge is added to the overdue amount of the regulated portion of your bill if you do not pay by the bill due date.
Delivery Charges (Electric)	Charges for the operating expenses of delivering energy.	Meter Multiplier	A factor that the meter reading usage is multiplied by in order to obtain the correct energy usage.
Delivery Riders (Electric)	Charges to recover various costs associated with Duke Energy's electric operations and to fund Ohio energy-related programs.	Rate	Code that identifies the gas delivery or electric distribution billing tariff used to calculate the bill.
Distribution Charge	Charge for the use of local wires, transformers, substations, and other equipment used to deliver electricity to your home/business.	Rider AAC	Charges to recover changes in environmental compliance, homeland security and tax costs.
Estimated (E) and Actual Readings	An actual reading is a reading we take from your meter. On the months we are unable to read your meter, we calculate your bill based on your past usage. Adjustments may be needed later, when we take an actual meter reading. If you would like to read your own meter to avoid estimated bills, please call us.	Rider FPP	Charges to recover the cost of fuel and purchase power.
Fixed Delivery Service Charge	The fixed costs for delivering gas, which do not change with usage.	Rider TCR	Charges to recover transmission costs assessed by the regional transmission organization.
Gas Cost Information	The GAS COST RECOVERY (GCR) rate is the cost (per 100 cubic feet) of gas we purchase from our suppliers. This rate varies periodically as gas prices to us increase or decrease. Duke Energy makes no profit on this charge since it is based on the actual costs we pay our suppliers for the gas we purchase and resell. The GCR rate is approved by the Public Utilities Commission of Ohio.	Supplier Charges	Charges from a Gas and / or Electric Supplier other than Duke Energy.
		Usage	Amount of energy used during the billing period.
		Usage-Based Charge	Charges to recover various costs associated with Duke Energy's gas operations and to fund Ohio energy-related programs.

BILLING OR SERVICE INQUIRES OR COMPLAINTS

If you have a question or complaint about your bill or service, call us at (513) 421-9500, or from a toll area call 1-800-544-6900. Persons who have a hearing impairment may call our TDD/TTY toll free number, 1-800-752-3254. You may also write to our Customer Services Department at P.O. Box 960, Mail Drop 309C, Cincinnati, 45201. In addition, you may contact us by fax at (513) 287-2376, or by e-mail at www.duke-energy.com.

If your complaint is not resolved after you have called Duke Energy Ohio, or for general utility information, residential and business consumers may contact the Public Utilities Commission of Ohio for assistance at 1-800-686-7826 (toll free) or for TTY at 1-800-686-1570 (toll free), from 8:00 a.m. to 5:00 p.m. weekdays, or at www.puco.ohio.gov.

Residential customers may also contact the Ohio Consumers Counsel for assistance with complaints and utility issues at 1-877-742-5622 (toll free) from 8:00 a.m. to 5:00 p.m. weekdays, or at www.pickccc.org.

To obtain information about competitive gas offers, visit www.puco.ohio.gov or call 1-800-299-7271.

BUSINESS HOURS

OFFICE HOURS:

Cincinnati - 8:00 a.m. - 5:00p.m. Monday - Friday

Newport - 8:00 a.m. - 5:00p.m. Monday - Friday

SERVICE EMERGENCY NUMBERS

Gas Trouble - (513) 651-4466 OR 1-800-634-4300

Electric Trouble - (513) 651-4182 OR 1-800-543-5599



visit us at www.duke-energy.com

29140120020010145301

Name	Service Address	Account Number
Sharon Wilson	606 Fox Chase WY Maineville OH 45039	7190-2053-06-3

Taxes	
Taxes	\$ 0.84

The Public Utility Commission of Ohio approved adjustments to Rider SRT and Rider FPP effective September 29, 2008. A typical residential customer using 1,000 kWh per month will see an increase of approximately \$10.09 or 9.1%.

Sincere thanks during the storm outage. Hurricane Ike caused the largest number of outages in the area's history. For those of you who experienced power outages, thank you for your patience as we worked to restore your service.

This month's Gas Cost Recovery (GCR) charge for customers purchasing their natural gas from Duke Energy is \$1.0495 per CCF, which includes a base GCR of \$1.0006 and Ohio excise tax of \$0.0489.

Customers adding generating equipment connected to their home's wiring must comply with the technical specifications contained in Rate IS, Interconnection Service. Customers with on-site generation fueled by solar, wind, biomass, landfill gas or hydropower, or use a micro turbine or a fuel cell may request net metering (Rate NM) from DE-Ohio. This rate requires DE-Ohio to provide a credit on the customer's bill for generation in excess of the customer's use.

If you have any questions about gas supplier service received from IGSenergy: Interstate Gas, please call them at 1-800-280-4474 or write to: P O Box 9060 Dublin, OH 43017

PRICE TO COMPARE: In order for an average residential customer to save money, an electric supplier must offer a price lower than 7.76 cents per kWh. Your Price to Compare may be different based on your usage. Visit www.duke-energy.com to calculate your individual Price to Compare or contact Duke Energy for a written explanation.

Explanation of Current Charges			
Gas			
Meter -	000937630	Duke Energy	
CCF Usage -	13	Rate FTRT - Res Transportation	
Sep 16 - Oct 15		Fixed Delivery Service Charge	\$ 20.25
29 Days		Usage-Based Charge	
		13CCF @ \$ 0.10704400	1.39
		Gas Delivery Riders	2.90
		Applicable Surcharge	
		13CCF @ \$ 0.00010000cr	0.00
			\$ 24.54
		IGSenergy: Interstate Gas	
		Rate IS05 - IGSenergy: Interstate Gas	
		Gas Supplier Energy Chg	
		13CCF @ \$ 0.99900000	\$ 12.99
			12.99
		Total Current Gas Charges	\$ 37.53

Name		Service Address	Account Number
Sharon Wilson		606 Fox Chase WY Maineville OH 45039	7190-2053-06-3
Electric		Duke Energy	
Meter -	095463367	Rate RS - Residential Svc-Winter	
kWh Usage -	779		
Sep 16 - Oct 15			
29 Days			
		Distribution-Customer Chg	\$ 4.50
		Delivery Charges	
		Distribution-Energy Chg	
		779kWh @ \$ 0.01994900	15.54
		Rider TCR	4.42
		Delivery Riders	3.71
		Total Delivery Charges	\$ 23.67
		Generation Charges	
		Generation Energy Chg	
		779kWh @ \$ 0.04418000	34.42
		Rider FPP	16.94
		Rider AAC	5.20
		Generation Riders	10.54
		Total Generation Charges	\$ 67.10
			95.27
Total Current Electric Charges			\$ 95.27

Explanation of Taxes		
Taxes		
	Warren County Sales Tax	\$ 0.84
		\$ 0.84
	Total Taxes	\$ 0.84

CCF

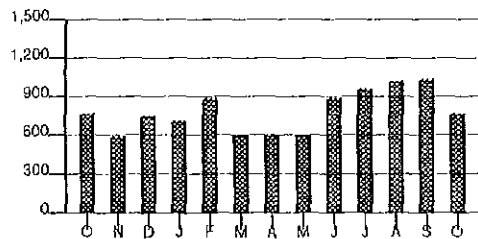
Gas Usage



Calculations based on most recent 12 month history
Total Usage 650
Average Usage 54

kWh

Electric Usage



Calculations based on most recent 12 month history
Total Usage 9,495
Average Usage 791

	OCT	NOV	DEC	JAN	FEB	MAR	APR	MAY	JUN	JUL	AUG	SEP	OCT
Gas	17	51	108	106	130	107	63	35	14	8	7	8	13
Electric	773	599	759	713	899	610	612	609	887	960	1,025	1,043	779

29140120020010145302

DISCONNECT NOTICE

Due Date	Amount Due
Oct 13, 2008	\$ 1,258.54

Account Number 7190-2053-06-3

70 13

Sharon Wilson
606 Fox Chase WY
Maineville OH 45039

00001492 CCE3 ZA 09263 - OHONPR 10 YYYNY 1oz

410 00001258540 71902053063 101320081 00001277421

#53.05 by 13th
more to avoid disconnect
conf # 15538571
CK 3004

HeatShare Contribution (for Customer Assistance) Amount Enclosed

1258.84 paid 10/10
- 150.00
1108.84 paid 10/13
- 53.05
\$1055.81

DISCONNECT NOTICE

PLEASE RETURN THE TOP PORTION WITH YOUR PAYMENT.

Page 1 of 3

Name /Service Address	For Inquiries Call	Account Number
Sharon Wilson 606 Fox Chase WY Maineville OH 45039	Duke Energy 513-651-5100 1-800-648-7777 IGSenergy: Interstate Gas 1-800-280-4474	7190-2053-06-3

Mail Payments To	Account Information
PO Box 9001084 Louisville KY 40290-1084	Payments after Sep 19 not included Last payment received Sep 02 Bill prepared on Sep 19, 2008 Next meter reading Oct 15, 2008 #203.

IMPORTANT- Your service may be disconnected if your past due amount of \$948.65 is not paid before 10/16/2008. A reconnection charge will be required. For questions, please call the number shown above.

If your service is disconnected for non payment, in addition to a reconnection charge, you will be required to pay an additional deposit in the amount of \$154.00 before service is restored.

Meter	Number	Reading Date From To	Days	Meter Reading Previous Present	Usage
Gas	000937630	Aug 15 Sep 16	32	29	37 E 8
Elec	095463367	Aug 15 Sep 16	32	45064	46107 E 1,043

Gas - Residential	
Usage - 8 CCF	
Duke Energy - Rate FTRT	\$ 20.75
IGSenergy: - Rate IS05	8.95
Interstate Gas	
Current Gas Charges	\$ 29.70

Electric - Residential	
Usage - 1,043 kWh	
Duke Energy - Rate RS	\$ 116.12
Current Electric Charges	\$ 116.12

Current Billing	
Amt Due - Previous Bill	\$ 1,289.31
Payment(s) Received	193.61
Late Payment Charge(s)	16.44
Balance Forward	1,112.14
Current Gas Charges	29.70
Current Electric Charges	116.12
Taxes	0.58
Current Amount Due	\$ 1,258.54

145.82 current || 1112.72
+ 101.15
246.97
101.15

Paid 150.00
3.50
#15513112
CK 3003

bal 1108.54 ÷ 11 = 100.74

DISCONNECT NOTICE		
Due Date	Amount Due	After
Oct 13, 2008	\$ 1,258.54	Oct 13, 2008
		\$ 1,277.42

Bill Payment Made Easy

e-Bill - View and pay your bill for free at www.duke-energy.com

BillPayer 2000[®] - Automatically pay from your checking account for 30¢/transaction - enroll at 1-800-991-7771

Speedpay[®] - Pay by phone 1-877-596-5068 with credit card or check a convenience fee will be charged.

PAYMENT OF BILLS

In order to avoid paying a late charge, please mail your payment to Duke Energy several days before the due date. Or, if you prefer, you may pay by phone through Speedpay, pay online with e-Bill, or pay automatically through BillPayer 2000[®]. Payments can also be made at a Duke Energy office or Pay Agent location. For more information about our bill payment options, please visit us at www.duke-energy.com or call 1-800-544-6900.

Disconnection of your utility service(s) will not result from failure to pay any non-tariffed or non-regulated products or services.

Under state law, the amount you are being billed for gas includes: (1) 4.89% State Excise Tax, (2) natural gas distribution taxes that have been in effect since 2001 and are currently at \$.01593 for the first 1,000 CCF, \$.00877 for the next 19,000 CCF and \$.00411 for all additional CCF and, (3) Assessments to assist in the support of the operations of the PUCO and the Office of the Consumers Counsel that have been in effect since 1912 and 1977 respectively.

Under state law, the amount you are being billed for electric includes: (1) kilowatt-hour taxes that have been in effect since 2001 and are currently at \$.00465 for the first 2,000 kWh, \$.00419 for the next 13,000 kWh and \$.00363 for all additional kWh and, (2) Assessments to assist in the support of the PUCO and the Office of the Consumers Counsel that have been in effect since 1912 and 1977 respectively.

EXPLANATION OF BILL LANGUAGE

(The following terms will not appear on every bill)

CCF	Gas usage, measured in hundreds of cubic feet.	Generation Charges	Charges associated with the production of electricity.
CR	Credited amount.	Generation Riders (Electric)	Charges to recover certain costs related to the production of electricity.
Current Charges (Gas and Electric)	Total of all charges based on usage during the current billing period for gas and electric services.	Kilowatt-hour (kWh)	The unit of measure for the electricity you use. For example, you use one kWh of electricity to light a 100 watt light bulb for 10 hours.
Customer Charge	The fixed monthly basic distribution charge to partially cover costs for billing, meter reading, service line maintenance, and equipment.	Late Payment Charge	A 1.5% late charge is added to the overdue amount of the regulated portion of your bill if you do not pay by the bill due date.
Delivery Charges (Electric)	Charges for the operating expenses of delivering energy.	Meter Multiplier	A factor that the meter reading usage is multiplied by in order to obtain the correct energy usage.
Delivery Riders (Electric)	Charges to recover various costs associated with Duke Energy's electric operations and to fund Ohio energy-related programs.	Rate	Code that identifies the gas delivery or electric distribution billing tariff used to calculate the bill.
Distribution Charge	Charge for the use of local wires, transformers, substations, and other equipment used to deliver electricity to your home/business.	Rider ACC	Charges to recover changes in environmental compliance, homeland security and tax costs.
Estimated (E) and Actual Readings	An actual reading is a reading we take from your meter. On the months we are unable to read your meter, we calculate your bill based on your past usage. Adjustments may be needed later, when we take an actual meter reading. If you would like to read your own meter to avoid estimated bills, please call us.	Rider FPP	Charges to recover the cost of fuel and purchase power.
Fixed Delivery Service Charge	The fixed costs for delivering gas, which do not change with usage.	Rider TCR	Charges to recover transmission costs assessed by the regional transmission organization.
Gas Cost Information	The GAS COST RECOVERY (GCR) rate is the cost (per 100 cubic feet) of gas we purchase from our suppliers. This rate varies periodically as gas prices to us increase or decrease. Duke Energy makes no profit on this charge since it is based on the actual costs we pay our suppliers for the gas we purchase and resell. The GCR rate is approved by the Public Utilities Commission of Ohio.	Supplier Charges	Charges from a Gas and / or Electric Supplier other than Duke Energy.
		Usage	Amount of energy used during the billing period.
		Usage-Based Charge	Charges to recover various costs associated with Duke Energy's gas operations and to fund Ohio energy-related programs.

BILLING OR SERVICE INQUIRES OR COMPLAINTS

If you have a question or complaint about your bill or service, call us at (513) 421-9500, or from a toll area call 1-800-544-6900. Persons who have a hearing impairment may call our TDD/TTY toll free number, 1-800-752-3254. You may also write to our Customer Services Department at P.O. Box 960, Mail Drop 309C, Cincinnati, 45201. In addition, you may contact us by fax at (513) 287-2376, or by e-mail at www.duke-energy.com.

If your complaint is not resolved after you have called Duke Energy Ohio, or for general utility information, residential and business consumers may contact the Public Utilities Commission of Ohio for assistance at 1-800-686-7826 (toll free) or for TTY at 1-800-686-1570 (toll free), from 8:00 a.m. to 5:00 p.m. weekdays, or at www.puco.ohio.gov.

Residential customers may also contact the Ohio Consumers Counsel for assistance with complaints and utility issues at 1-877-742-5622 (toll free) from 8:00 a.m. to 5:00 p.m. weekdays, or at www.pickccc.org.

To obtain information about competitive gas offers, visit www.puco.ohio.gov or call 1-800-299-7271.

BUSINESS HOURS

OFFICE HOURS:

Cincinnati - 8:00 a.m. - 5:00p.m. Monday - Friday

Newport - 8:00 a.m. - 5:00p.m. Monday - Friday

SERVICE EMERGENCY NUMBERS

Gas Trouble - (513) 651-4466 OR 1-800-634-4300

Electric Trouble - (513) 651-4182 OR 1-800-543-5599

visit us at www.duke-energy.com

Name	Service Address	Account Number
Sharon Wilson	606 Fox Chase WY Maineville OH 45039	7190-2053-06-3

Taxes	
Taxes	\$ 0.58

Urgent Message - The gas charges on this bill have been estimated because of weather conditions.

Urgent Message - The electric charges on this bill have been estimated because of weather conditions.

Know your bill amount in advance! Our BUDGET BILLING program can help you manage your energy bills by eliminating the highs and lows. Budget Billing provides you with a fixed monthly amount based on your annual average. Sign up online at www.duke-energy.com.

This month's Gas Cost Recovery (GCR) charge for customers purchasing their natural gas from Duke Energy is \$1.1750 per CCF, which includes a base GCR of \$1.1202 and Ohio excise tax of \$0.0548.

If you have any questions about gas supplier service received from IGSenergy: Interstate Gas, please call them at 1-800-280-4474 or write to: P O Box 9060 Dublin, OH 43017

PRICE TO COMPARE: In order for an average residential customer to save money, an electric supplier must offer a price lower than 6.75 cents per kWh. Your Price to Compare may be different based on your usage. Visit www.duke-energy.com to calculate your individual Price to Compare or contact Duke Energy for a written explanation.

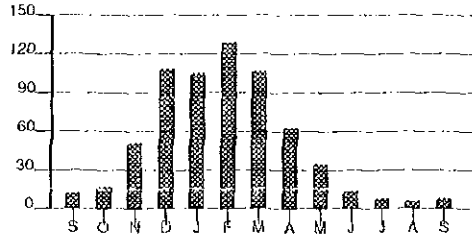
Explanation of Current Charges			
Gas Meter - 000937630 CCF Usage - 8 Aug 15 - Sep 16 32 Days	Duke Energy		
	Rate FTRT - Res Transportation		
	Fixed Delivery Service Charge		\$ 15.00
	Usage-Based Charge		
	8CCF @ \$ 0.40113400		3.21
	Gas Delivery Riders		2.54
	Applicable Surcharge		
	8CCF @ \$ 0.00010000cr		0.00
			\$ 20.75
	IGSenergy: Interstate Gas		
	Rate IS05 - IGSenergy: Interstate Gas		
	Gas Supplier Energy Chg		
	8CCF @ \$ 1.11900000		\$ 8.95
			8.95
	Total Current Gas Charges		\$ 29.70
Electric Meter - 095463367 kWh Usage - 1,043 Aug 15 - Sep 16 32 Days	Duke Energy		
	Rate RS - Residential Svc-Summer		
	Distribution-Customer Chg		\$ 4.50
	Delivery Charges		
	Distribution-Energy Chg		
	1,043 kWh @ \$ 0.01994900		20.81
	Rider TCR		5.92
	Delivery Riders		4.94
	Total Delivery Charges		\$ 31.67
	Generation Charges		
	Generation Energy Chg		
	1,000 kWh @ \$ 0.04418000		44.18
	43 kWh @ \$ 0.05597800		2.41
	Rider FPP		12.18
	Rider AAC		7.03
	Generation Riders		14.15
	Total Generation Charges		\$ 79.95
			116.12
	Total Current Electric Charges		\$ 116.12

Name	Service Address	Account Number
Sharon Wilson	606 Fox Chase WY Maineville OH 45039	7190-2053-06-3

Explanation of Taxes		
Taxes		
	Warren County Sales Tax	\$ 0.58
	Total Taxes	\$ 0.58

CCF

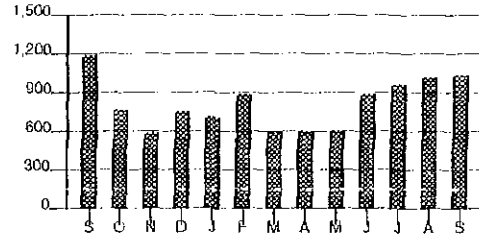
Gas Usage



Calculations based on most recent 12 month history
Total Usage 654
Average Usage 55

kWh

Electric Usage



Calculations based on most recent 12 month history
Total Usage 9,489
Average Usage 791

	SEP	OCT	NOV	DEC	JAN	FEB	MAR	APR	MAY	JUN	JUL	AUG	SEP
Gas	13	17	51	108	105	130	107	63	35	14	8	7	8
Electric	1,197	773	599	759	713	899	610	612	609	887	960	1,025	1,043

DISCONNECT NOTICE

Account Number 7190-2053-06-3

70 13

Due Date	Amount Due
Sep 9, 2008	\$ 1,289.31

\$ _____ \$ _____
HeatShare Contribution Amount Enclosed
(for Customer Assistance)

00061597 CGE3 ZA 08231 - CUIDNPR 12 YYYNNY 1oz

Sharon Wilson
606 Fox Chase WY
Maineville OH 45039

PO Box 9001084
Louisville KY 40290-1084

current charges 29.61 gas
113.94 electric
143.55

410 00001289314 71902053063 090920081 00001308653

DISCONNECT NOTICE

1 PLEASE RETURN THE TOP PORTION WITH YOUR PAYMENT 1

Page 1 of 3

Name / Service Address	For Inquiries Call	Account Number
------------------------	--------------------	----------------

Sharon Wilson 606 Fox Chase WY Maineville OH 45039	Duke Energy IGSenergy: Interstate Gas	513-651-5100 1-800-648-7777 1-877-444-7427	7190-2053-06-3
--	--	--	----------------

Mail Payments To	Account Information
------------------	---------------------

PO Box 9001084 Louisville KY 40290-1084	Payments after Aug 18 not included	Bill prepared on Aug 18, 2008 Next meter reading Sep 16, 2008
--	------------------------------------	--

IMPORTANT- Your service may be disconnected if your past due amount of \$1,004.65 is not paid before 09/12/2008. A reconnection charge will be required. For questions, please call the number shown above.

read Aug 18th

If your service is disconnected for non payment, in addition to a reconnection charge, you will be required to pay an additional deposit in the amount of \$154.00 before service is restored.

Meter	Number	Reading Date From To	Days	Meter Reading Previous	Present	Usage
Gas	000937630	Jul 18 Aug 15	28	22	29	7
Elec	095463367	Jul 18 Aug 15	28	44039	45064	1,025

Gas - Residential		
Usage -	7 CCF	
Duke Energy - Rate FTRT		\$ 20.31
IGSenergy: - Rate IS05		9.30
Interstate Gas		
Current Gas Charges		\$ 29.61

Electric - Residential		
Usage -	1,025 kWh	
Duke Energy - Rate RS		\$ 113.94
Current Electric Charges		\$ 113.94

Current Billing	
Amt Due - Previous Bill	\$ 193.61
Late Payment Charge(s)	2.90
Balance Forward	196.51
Current Gas Charges	29.61
Current Electric Charges	113.94
Agmt #2770623 Ending Bal	948.65
Taxes	0.60
Current Amount Due	\$ 1,289.31

DISCONNECT NOTICE

Due Date	Amount Due	After Sep 9, 2008
Sep 9, 2008	\$ 1,289.31	\$ 1,308.65

Bill Payment Made Easy

e-Bill - View and pay your bill for free at www.duke-energy.com

BillPayer 2000® Automatically pay from your checking account for 30¢/transaction - enroll at 1-800-991-7771

Speedpay® Pay by phone 1-877-596-5068 with credit card or check a convenience fee will be charged.

PAYMENT OF BILLS

In order to avoid paying a late charge, please mail your payment to Duke Energy several days before the due date. Or, if you prefer, you may pay by phone through Speedpay, pay online with e-Bill, or pay automatically through BillPayer 2000®. Payments can also be made at a Duke Energy office or Pay Agent location. For more information about our bill payment options, please visit us at www.duke-energy.com or call 1-800-544-6900.

Disconnection of your utility service(s) will not result from failure to pay any non-tariffed or non-regulated products or services.

Under state law, the amount you are being billed for gas includes: (1) 4.89% State Excise Tax, (2) natural gas distribution taxes that have been in effect since 2001 and are currently at \$.01593 for the first 1,000 CCF, \$.00877 for the next 19,000 CCF and \$.00411 for all additional CCF and, (3) Assessments to assist in the support of the operations of the PUCO and the Office of the Consumers Counsel that have been in effect since 1912 and 1977 respectively.

Under state law, the amount you are being billed for electric includes: (1) kilowatt-hour taxes that have been in effect since 2001 and are currently at \$.00465 for the first 2,000 kWh, \$.00419 for the next 13,000 kWh and \$.00363 for all additional kWh and, (2) Assessments to assist in the support of the PUCO and the Office of the Consumers Counsel that have been in effect since 1912 and 1977 respectively.

EXPLANATION OF BILL LANGUAGE

(The following terms will not appear on every bill)

CCF	Gas usage, measured in hundreds of cubic feet.	Generation Charges	Charges associated with the production of electricity.
CR	Credited amount.	Generation Riders (Electric)	Charges to recover certain costs related to the production of electricity.
Current Charges (Gas and Electric)	Total of all charges based on usage during the current billing period for gas and electric services.	Kilowatt-hour (kWh)	The unit of measure for the electricity you use. For example, you use one kWh of electricity to light a 100 watt light bulb for 10 hours.
Customer Charge	The fixed monthly basic distribution charge to partially cover costs for billing, meter reading, service line maintenance, and equipment.	Late Payment Charge	A 1.5% late charge is added to the overdue amount of the regulated portion of your bill if you do not pay by the bill due date.
Delivery Charges (Electric)	Charges for the operating expenses of delivering energy.	Meter Multiplier	A factor that the meter reading usage is multiplied by in order to obtain the correct energy usage.
Delivery Riders (Electric)	Charges to recover various costs associated with Duke Energy's electric operations and to fund Ohio energy-related programs.	Rate	Code that identifies the gas delivery or electric distribution billing tariff used to calculate the bill.
Distribution Charge	Charge for the use of local wires, transformers, substations, and other equipment used to deliver electricity to your home/business.	Rider ACC	Charges to recover changes in environmental compliance, homeland security and tax costs.
Estimated (E) and Actual Readings	An actual reading is a reading we take from your meter. On the months we are unable to read your meter, we calculate your bill based on your past usage. Adjustments may be needed later, when we take an actual meter reading. If you would like to read your own meter to avoid estimated bills, please call us.	Rider FPP	Charges to recover the cost of fuel and purchase power.
Fixed Delivery Service Charge	The fixed costs for delivering gas, which do not change with usage.	Rider TCR	Charges to recover transmission costs assessed by the regional transmission organization.
Gas Cost Information	The GAS COST RECOVERY (GCR) rate is the cost (per 100 cubic feet) of gas we purchase from our suppliers. This rate varies periodically as gas prices to us increase or decrease. Duke Energy makes no profit on this charge since it is based on the actual costs we pay our suppliers for the gas we purchase and resell. The GCR rate is approved by the Public Utilities Commission of Ohio.	Supplier Charges	Charges from a Gas and / or Electric Supplier other than Duke Energy.
		Usage	Amount of energy used during the billing period.
		Usage-Based Charge	Charges to recover various costs associated with Duke Energy's gas operations and to fund Ohio energy-related programs.

BILLING OR SERVICE INQUIRES OR COMPLAINTS

If you have a question or complaint about your bill or service, call us at (513) 421-9500, or from a toll area call 1-800-544-6900. Persons who have a hearing impairment may call our TDD/TTY toll free number, 1-800-752-3254. You may also write to our Customer Services Department at P.O. Box 960, Mail Drop 309C, Cincinnati, 45201. In addition, you may contact us by fax at (513) 287-2376, or by e-mail at www.duke-energy.com.

If your complaint is not resolved after you have called Duke Energy Ohio, or for general utility information, residential and business consumers may contact the Public Utilities Commission of Ohio for assistance at 1-800-686-7826 (toll free) or for TTY at 1-800-686-1570 (toll free), from 8:00 a.m. to 5:00 p.m. weekdays, or at www.puco.ohio.gov.

Residential customers may also contact the Ohio Consumers Counsel for assistance with complaints and utility issues at 1-877-742-5622 (toll free) from 8:00 a.m. to 5:00 p.m. weekdays, or at www.pickoccc.org.

To obtain information about competitive gas offers, visit www.puco.ohio.gov or call 1-800-299-7271.

BUSINESS HOURS

OFFICE HOURS:

Cincinnati - 8:00 a.m. - 5:00p.m. Monday - Friday

Newport - 8:00 a.m. - 5:00p.m. Monday - Friday

SERVICE EMERGENCY NUMBERS

Gas Trouble - (513) 651-4466 OR 1-800-634-4300

Electric Trouble - (513) 651-4182 OR 1-800-543-5599

Name	Service Address	Account Number
Sharon Wilson	606 Fox Chase WY Maineville OH 45039	7190-2053-06-3

Taxes	
Taxes	\$ 0.60

PLEASE NOTE: Our records indicate that your previous bill was not paid in full. As a result, you have been removed from your agreement. The entire agreement balance is now due.

Duke Energy and People Working Cooperatively (PWC) provide eligible customers with free home weatherization to reduce energy usage and lower energy bills. To see if you qualify, call PWC at 513-351-7921.

This month's Gas Cost Recovery (GCR) charge for customers purchasing their natural gas from Duke Energy is \$1.4054 per CCF, which includes a base GCR of \$1.3399 and Ohio excise tax of \$0.0655.

If you have any questions about gas supplier service received from IGSenergy: Interstate Gas, please call them at 1-877-444-7427 or write to: P O Box 9060 Dublin, OH 43017

PRICE TO COMPARE: In order for an average residential customer to save money, an electric supplier must offer a price lower than 6.75 cents per kWh. Your Price to Compare may be different based on your usage. Visit www.duke-energy.com to calculate your individual Price to Compare or contact Duke Energy for a written explanation.

Explanation of Current Charges			
Gas Meter - 000937630 CCF Usage - 7 Jul 18 - Aug 15 28 Days	Duke Energy		
	Rate FTRT - Res Transportation		
	Fixed Delivery Service Charge	\$ 15.00	
	Usage-Based Charge		
	7CCF @ \$ 0.40113400	2.81	
	Gas Delivery Riders	2.48	
	Applicable Surcharge		
	7CCF @ \$ 0.00250000	0.02	\$ 20.31
	IGSenergy: Interstate Gas		
	Rate IS05 - IGSenergy: Interstate Gas		
Electric Meter - 095463367 kWh Usage - 1,025 Jul 18 - Aug 15 28 Days	Duke Energy		
	Rate RS - Residential Svc-Summer		
	Distribution-Customer Chg	\$ 4.50	
	Delivery Charges		
	Distribution-Energy Chg		
	1,025kWh @ \$ 0.01994900	20.45	
	Rider TCR	5.81	
	Delivery Riders	4.86	
	Total Delivery Charges	\$ 31.12	
	Generation Charges		
	Generation Energy Chg		
	1,000kWh @ \$ 0.04418000	44.18	
	25kWh @ \$ 0.05597800	1.40	
	Rider FPP	11.97	
	Rider AAC	6.88	
	Generation Riders	13.89	
	Total Generation Charges	\$ 78.32	113.94
	Total Current Electric Charges		\$ 113.94
	Total Current Gas Charges		\$ 29.61

Name	Service Address	Account Number
Sharon Wilson	605 Fox Chase WY Maineville OH 45039	7190-2053-06-3

Explanation of Taxes		
Taxes		
	Warren County Sales Tax	\$ 0.60
	Total Taxes	\$ 0.60

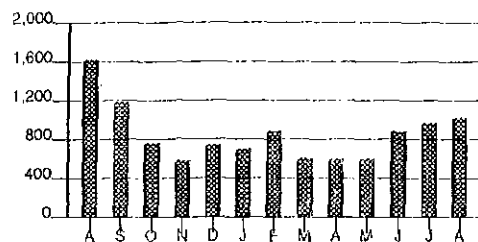
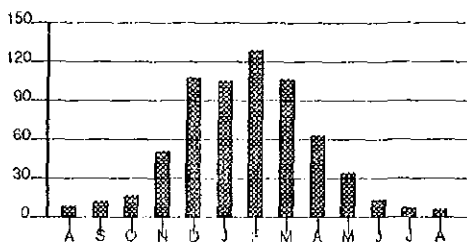
Agreement Information			
Summary		Previous Agreement Balance	\$ 948.65
Agreement Number -	2770623	Current Agreement Amount Due	\$ 948.65cr
Agreement Amount -	\$ 1,004.65	Agreement Balance	\$ 0.00
Agreement Date -	07/16/08		
Number of Payments -	18		

CCF

Gas Usage

kWh

Electric Usage



Calculations based on most recent 12 month history
 Total Usage 659
 Average Usage 55

Calculations based on most recent 12 month history
 Total Usage 9,643
 Average Usage 804

	AUG	SEP	OCT	NOV	DEC	JAN	FEB	MAR	APR	MAY	JUN	JUL	AUG
Gas	10	13	17	51	108	106	130	107	63	35	14	8	7
Electric	1,626	1,197	773	599	759	713	899	610	612	609	857	960	1,025

\$ 113.90

179.46 speed pay
+ 3.95
183.41
70 13

DISCONNECT NOTICE

Account Number 7190-2053-06-3

Due Date	Amount Due
May 15, 2007	\$ 333.76

conf # 2655886 paid 5/17
thurs

\$ _____ \$ _____
HeatShare Contribution Amount Enclosed
(for Customer Assistance)

00001786 CGE3 ZA 07113 - OHONPR 08 YYYNY for

Sharon Wilson
606 Fox Chase WY
Maineville OH 45039

Exhibit Paragraph #9

PO Box 9001084
Louisville KY 40290-1084

Letter of

410 00000333760 71902053063 051520076 00000338770

DISCONNECT NOTICE

Page 1 of 3

Name /Service Address	For Inquiries Call	Account Number
Sharon Wilson 606 Fox Chase WY Maineville OH 45039	Duke Energy 513-651-5100 Interstate Gas Supply 1-800-648-7777 1-877-444-7427	7190-2053-06-3

Mail Payments To	Account Information
PO Box 9001084 Louisville KY 40290-1084	Payments after Apr 23 not included Bill prepared on Apr 23, 2007 Next meter reading May 17, 2007

IMPORTANT- Your service may be disconnected if your past due amount of \$179.46 is not paid before 05/18/2007. A reconnection charge will be required. For questions, please call the number shown above.

If your service is disconnected for non payment, in addition to a reconnection charge, you will be required to pay an additional deposit in the amount of \$69.00 before service is restored.

Meter	Number	Reading Date From To	Days	Meter Reading Previous	Present	Usage
Gas	000437268	Mar 16 Apr 19	34	1448	1448	0
Elec	095463367	Mar 16 Apr 19	34	30165	30875	710

Gas - Residential		
Usage -	0 CCF	
Duke Energy - Rate FTRS		\$ 11.32
Interstate Gas - Rate IS05		
Supply	0.00	
Current Gas Charges		\$ 11.32

Current Billing	
Amt Due - Previous Bill	\$ 113.90
Late Payment Charge(s)	1.71
Balance Forward	115.61
Current Gas Charges	11.32
Current Electric Charges	73.37
Agmt #2537069 Ending Bal	133.46
Current Amount Due	\$ 333.76

Electric - Residential		
Usage -	710 kWh	
Duke Energy - Rate RS		\$ 73.37
Current Electric Charges		\$ 73.37

DISCONNECT NOTICE

Due Date	Amount Due	After
May 15, 2007	\$ 333.76	May 15, 2007
		\$ 338.77

Bill Payment Made Easy

e-Bill - View and pay your bill for free at www.duke-energy.com

BillPayer 2000 - Automatically pay from your checking account for 30¢/transaction - enroll at 1-800-991-7771

Speedpay - Pay by phone at 1-877-596-5068 with credit card or check for \$3.95/transaction

PAYMENT OF BILLS

In order to avoid paying a late charge, please mail your payment to Duke Energy several days before the due date. Or, if you prefer, you may pay by phone through Speedpay, pay online with e-Bill, or pay automatically through BillPayer 2000. Payments can also be made at a Duke Energy office or Pay Agent location. For more information about our bill payment options, please visit us at www.duke-energy.com or call 1-800-544-6900.

Disconnection of your utility service(s) will not result from failure to pay any non-tariffed or non-regulated products or services.

Under state law, the amount you are being billed for gas includes: (1) 4.89% State Excise Tax, (2) natural gas distribution taxes that have been in effect since 2001 and are currently at \$.01593 for the first 1,000 CCF, \$.00877 for the next 19,000 CCF and \$.00411 for all additional CCF and, (3) Assessments to assist in the support of the operations of the PUCO and the Office of the Consumers Counsel that have been in effect since 1912 and 1977 respectively.

Under state law, the amount you are being billed for electric includes: (1) kilowatt-hour taxes that have been in effect since 2001 and are currently at \$.00465 for the first 2,000 kWh, \$.00419 for the next 13,000 kWh and \$.00363 for all additional kWh and, (2) Assessments to assist in the support of the PUCO and the Office of the Consumers Counsel that have been in effect since 1912 and 1977 respectively.

EXPLANATION OF BILL LANGUAGE

(The following terms will not appear on every bill)

CCF	Gas usage, measured in hundreds of cubic feet.	Gas Cost Information	The GAS COST RECOVERY (GCR) rate is the cost (per 100 cubic feet) of gas we purchase from our suppliers. This rate varies periodically as gas prices to us increase or decrease. Duke Energy makes no profit on this charge since it is based on the actual costs we pay our suppliers for the gas we purchase and resell. The GCR rate is approved by the Public Utilities Commission of Ohio.
CR	Credited amount.	Gas Delivery Riders	Charges to recover various costs associated with Duke Energy's gas operations and to fund Ohio energy-related programs.
Current Charges (Gas and Electric)	Total of all charges based on usage during the current billing period for gas and electric services.	Generation Charges	Charges associated with the production of electricity.
Customer Charge	The fixed monthly basic distribution charge to partially cover costs for billing, meter reading, service line maintenance, and equipment.	Kilowatt-hour (kWh)	The unit of measure for the electricity you use. For example, you use one kWh of electricity to light a 100 watt light bulb for 10 hours.
Delivery Charges (Electric & Gas)	Charges for the operating expenses of delivering energy.	Late Payment Charge	A 1.5% late charge is added to the overdue amount of the regulated portion of your bill if you do not pay by the bill due date.
Delivery Riders (Electric)	Charges to recover various costs associated with Duke Energy's electric operations and to fund Ohio energy-related programs.	Meter Multiplier	A factor that the meter reading usage is multiplied by in order to obtain the correct energy usage.
Distribution Charge	Charge for the use of local wires, transformers, substations, and other equipment used to deliver electricity to your home/business.	Rates	Code that identifies the gas delivery or electric distribution billing tariff used to calculate the bill.
Estimated (E) and Actual Readings	An actual reading is a reading we take from your meter. On the months we are unable to read your meter, we calculate your bill based on your past usage. Adjustments may be needed later, when we take an actual meter reading. If you would like to read your own meter to avoid estimated bills, please call us.	Supplier Charges	Charges from a Gas and / or Electric Supplier other than Duke Energy.
		Usage	Amount of energy used during the billing period.

BILLING OR SERVICE INQUIRES OR COMPLAINTS

If you have a question or complaint about your bill or service, call us at (513) 421-9500, or from a toll area call 1-800-544-6900. Persons who have a hearing impairment may call our TDD/TTY toll free number, 1-800-752-3254. You may also write to our Customer Services Department at P.O. Box 960, Mail Drop 309C, Cincinnati, 45201. In addition, you may contact us by fax at (513) 287-2376, or by e-mail at www.duke-energy.com.

If your complaint is not resolved after you have called Duke Energy Ohio, or for general utility information, residential and business customers may call the Public Utilities Commission of Ohio (PUCO) toll free at 1-800-686-7826 or for TDD/TTY toll free at 1-800-686-1570, from 8:00 a.m. to 5:30 p.m. weekdays, or visit www.puco.ohio.gov.

The Ohio Consumers' Counsel (OCC) represents residential utility customers in matters before the PUCO. The OCC can be contacted toll free at 1-877-742-5622, from 8:00 a.m. to 5:00 p.m. weekdays, or visit www.pickocc.org.

To obtain information about competitive gas offers, visit www.puco.ohio.gov or call 1-800-299-7271.

BUSINESS HOURS

OFFICE HOURS:

Cincinnati - 8:00 a.m. - 5:00p.m. Monday - Friday

Newport - 8:00 a.m. - 5:00p.m. Monday - Friday

SERVICE EMERGENCY NUMBERS

Gas Trouble - (513) 651-4466 OR 1-800-634-4300

Electric Trouble - (513) 651-4182 OR 1-800-543-5599

Name	Service Address	Account Number
Sharon Wilson	606 Fox Chase WY Maineville OH 45039	7190-2053-06-3

PLEASE NOTE: Our records indicate that your previous bill was not paid in full. As a result, you have been removed from your agreement. The entire agreement balance is now due.

The PUCO approved an adjustment to electric Rider FPP effective March 30, 2007. A typical residential customer receiving generation from Duke Energy using 1,000 Kwh per month will see an increase of approximately \$0.72 or 0.7%.

PRICE TO COMPARE: In order for an average residential customer to save money, an electric supplier must offer a price lower than 6.17 cents per kWh. Your Price to Compare may be different based on your usage. Visit www.duke-energy.com to calculate your individual Price to Compare or contact Duke Energy for a written explanation.

The Public Utilities Commission of Ohio approved a reduction in Duke Energy Ohio's gas customer choice switching fee from \$5.00 to \$4.00, effective March 30, 2007. The fee applies to customers participating in Duke Energy Ohio's gas customer choice program who are not part of a community-sponsored governmental aggregation and are either returning to Duke Energy Ohio or are switching suppliers.

If you have any questions about gas supplier service received from Interstate Gas Supply, please call them at 1-877-444-7427 or write to: P O Box 9060 Dublin, OH 43017

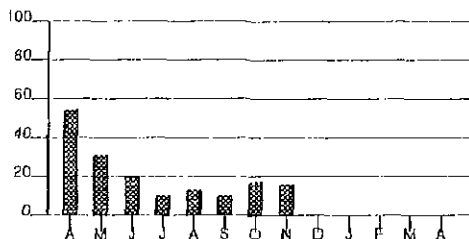
Explanation of Current Charges			
Gas Meter - 000437268 CCF Usage - 0 Mar 16 - Apr 19 34 Days	Duke Energy Rate FTRS - Res Transportation		
	Customer Charge	\$ 6.00	
	Gas Delivery Riders	5.32	\$ 11.32
	Interstate Gas Supply Rate IS05 - Interstate Gas Rate		0.00
	Total Current Gas Charges		\$ 11.32
Electric Meter - 095463367 kWh Usage - 710 Mar 16 - Apr 19 34 Days	Duke Energy Rate RS - Residential Svc-Winter		
	Distribution-Customer Chg	\$ 4.50	
	Delivery Charges		
	Distribution-Energy Chg		
	710kWh @ \$ 0.01994900	14.16	
	Rider TCR	1.63	
	Rider RSC	4.71	
	Rider AAC	1.88	
	Delivery Riders	10.51	
	Total Delivery Charges	\$ 32.89	
	Generation Charges		
	Generation Energy Chg		
	710kWh @ \$ 0.03755300	26.66	
	Rider FPP	9.32	
	Total Generation Charges	\$ 35.98	73.37
Total Current Electric Charges		\$ 73.37	

Agreement Information			
Summary			
Agreement Number -	2537069	Previous Agreement Balance	\$ 133.46
Agreement Amount -	\$ 273.37	Current Agreement Amount Due	\$ 133.46cr
Agreement Date -	02/05/07	Agreement Balance	\$ 0.00
Number of Payments -	6		

Name	Service Address	Account Number
Sharon Wilson	606 Fox Chase WY Maineville OH 45039	7190-2053-06-3

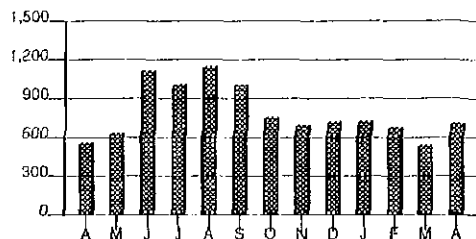
CCF

Gas Usage



kWh

Electric Usage



Calculations based on most recent 12 month history
Total Usage 117
Average Usage 10

Calculations based on most recent 12 month history
Total Usage 9,763
Average Usage 814

	APR	MAY	JUN	JUL	AUG	SEP	OCT	NOV	DEC	JAN	FEB	MAR	APR
Gas	54	31	20	10	13	10	17	16	0	0	0	0	0
Electric	560	633	1,117	1,011	1,145	1,005	760	694	731	724	683	550	710

Account Number 7190-2053-06-3

70 13

Due Date	Amount Due
Aug 13, 2008	\$ 193.61

\$ _____ \$ _____
HeatShare Contribution Amount Enclosed
(for Customer Assistance)



00001230 CGE1 ZA 08204 - ZIPCODE 15 YNYNNN 1oz

Sharon Wilson
606 Fox Chase Way
Maineville OH 45039-9399

PO Box 9001076
Louisville KY 40290-1076

400 00000193615 71902053063 081320080 00000196517

↑ PLEASE RETURN THE TOP PORTION WITH YOUR PAYMENT. ↑

Page 1 of 3

Name / Service Address	For Inquiries Call	Account Number
Sharon Wilson 606 Fox Chase WY Maineville OH 45039	Duke Energy 513-421-9500 1-800-544-6900 IGSenergy: Interstate Gas 1-877-444-7427	7190-2053-06-3

Mail Payments To	Account Information
PO Box 9001076 Louisville KY 40290-1076	Payments after Jul 22 not included Last payment received Jul 01 Bill prepared on Jul 22, 2008 Next meter reading Aug 15, 2008

Meter	Number	Reading Date From To	Days	Meter Reading Previous Present	Usage
Gas	000937630	Jun 18 Jul 18	30	14 22	8
Elec	095463367	Jun 18 Jul 18	30	43079 44039	960

Gas - Residential	
Usage - 8 CCF	
Duke Energy - Rate FTRT	\$ 20.77
IGSenergy: - Rate IS05	9.59
Interstate Gas	
Current Gas Charges	\$ 30.36

Electric - Residential	
Usage - 960 kWh	
Duke Energy - Rate RS	\$ 106.63
Current Electric Charges	\$ 106.63

Taxes	
Taxes	\$ 0.62

Current Billing	
Amt Due - Previous Bill	\$ 1,088.97
Payment(s) Received	84.32cr
Balance Forward	1,004.65
Current Gas Charges	30.36
Current Electric Charges	106.63
Agmt #2770623 Amt Due	56.00
Transfer to Agmt #2770623	1,004.65cr
Taxes	0.62
Current Amount Due	\$ 193.61

Account Balance	
Current Billing	\$ 193.61
Agreement Balance	948.65
Total Account Balance	\$ 1,142.26

The Public Utility Commission of Ohio approved adjustments to Rider SRT (part of the "Generation Riders") and Rider FPP effective June 30, 2008. A typical residential customer using 1,000 kWh per month will see a decrease of approximately \$0.46 or 0.4%.

Due Date	Amount Due	After Aug 13, 2008
Aug 13, 2008	\$ 193.61	\$ 196.51

Bill Payment Made Easy

e-Bill - View and pay your bill for free at www.duke-energy.com

BillPayer 2000® - Automatically pay from your checking account for 30¢/transaction - enroll at 1-800-991-7771

Speedpay® - Pay by phone 1-877-596-5068 with credit card or check a convenience fee will be charged.

PAYMENT OF BILLS

In order to avoid paying a late charge, please mail your payment to Duke Energy several days before the due date. Or, if you prefer, you may pay by phone through Speedpay, pay online with e-Bill, or pay automatically through BillPayer 2000®. Payments can also be made at a Duke Energy office or Pay Agent location. For more information about our bill payment options, please visit us at www.duke-energy.com or call 1-800-544-6900.

Disconnection of your utility service(s) will not result from failure to pay any non-tariffed or non-regulated products or services.

Under state law, the amount you are being billed for gas includes: (1) 4.89% State Excise Tax, (2) natural gas distribution taxes that have been in effect since 2001 and are currently at \$.01593 for the first 1,000 CCF, \$.00877 for the next 19,000 CCF and \$.00411 for all additional CCF and, (3) Assessments to assist in the support of the operations of the PUCO and the Office of the Consumers Counsel that have been in effect since 1912 and 1977 respectively.

Under state law, the amount you are being billed for electric includes: (1) kilowatt-hour taxes that have been in effect since 2001 and are currently at \$.00465 for the first 2,000 kWh, \$.00419 for the next 13,000 kWh and \$.00363 for all additional kWh and, (2) Assessments to assist in the support of the PUCO and the Office of the Consumers Counsel that have been in effect since 1912 and 1977 respectively.

EXPLANATION OF BILL LANGUAGE

(The following terms will not appear on every bill)

CCF	Gas usage, measured in hundreds of cubic feet.	Generation Charges	Charges associated with the production of electricity.
CR	Credited amount.	Generation Riders (Electric)	Charges to recover certain costs related to the production of electricity.
Current Charges (Gas and Electric)	Total of all charges based on usage during the current billing period for gas and electric services.	Kilowatt-hour (kWh)	The unit of measure for the electricity you use. For example, you use one kWh of electricity to light a 100 watt light bulb for 10 hours.
Customer Charge	The fixed monthly basic distribution charge to partially cover costs for billing, meter reading, service line maintenance, and equipment.	Late Payment Charge	A 1.5% late charge is added to the overdue amount of the regulated portion of your bill if you do not pay by the bill due date.
Delivery Charges (Electric)	Charges for the operating expenses of delivering energy.	Meter Multiplier	A factor that the meter reading usage is multiplied by in order to obtain the correct energy usage.
Delivery Riders (Electric)	Charges to recover various costs associated with Duke Energy's electric operations and to fund Ohio energy-related programs.	Rate	Code that identifies the gas delivery or electric distribution billing tariff used to calculate the bill.
Distribution Charge	Charge for the use of local wires, transformers, substations, and other equipment used to deliver electricity to your home/business.	Rider ACC	Charges to recover changes in environmental compliance, homeland security and tax costs.
Estimated (E) and Actual Readings	An actual reading is a reading we take from your meter. On the months we are unable to read your meter, we calculate your bill based on your past usage. Adjustments may be needed later, when we take an actual meter reading. If you would like to read your own meter to avoid estimated bills, please call us.	Rider FPP	Charges to recover the cost of fuel and purchase power.
Fixed Delivery Service Charge	The fixed costs for delivering gas, which do not change with usage.	Rider TCR	Charges to recover transmission costs assessed by the regional transmission organization.
Gas Cost Information	The GAS COST RECOVERY (GCR) rate is the cost (per 100 cubic feet) of gas we purchase from our suppliers. This rate varies periodically as gas prices to us increase or decrease. Duke Energy makes no profit on this charge since it is based on the actual costs we pay our suppliers for the gas we purchase and resell. The GCR rate is approved by the Public Utilities Commission of Ohio.	Supplier Charges	Charges from a Gas and / or Electric Supplier other than Duke Energy.
		Usage	Amount of energy used during the billing period.
		Usage-Based Charge	Charges to recover various costs associated with Duke Energy's gas operations and to fund Ohio energy-related programs.

BILLING OR SERVICE INQUIRES OR COMPLAINTS

If you have a question or complaint about your bill or service, call us at (513) 421-9500, or from a toll area call 1-800-544-6900. Persons who have a hearing impairment may call our TDD/TTY toll free number, 1-800-752-3254. You may also write to our Customer Services Department at P.O. Box 960, Mail Drop 309C, Cincinnati, 45201. In addition, you may contact us by fax at (513) 287-2376, or by e-mail at www.duke-energy.com.

If your complaint is not resolved after you have called Duke Energy Ohio, or for general utility information, residential and business consumers may contact the Public Utilities Commission of Ohio for assistance at 1-800-686-7826 (toll free) or for TTY at 1-800-686-1570 (toll free), from 8:00 a.m. to 5:00 p.m. weekdays, or at www.puco.ohio.gov.

Residential customers may also contact the Ohio Consumers Counsel for assistance with complaints and utility issues at 1-877-742-5622 (toll free) from 8:00 a.m. to 5:00 p.m. weekdays, or at www.pickocc.org.

To obtain information about competitive gas offers, visit www.puco.ohio.gov or call 1-800-299-7271.

BUSINESS HOURS

OFFICE HOURS:

Cincinnati - 8:00 a.m. - 5:00 p.m. Monday - Friday

Newport - 8:00 a.m. - 5:00 p.m. Monday - Friday

SERVICE EMERGENCY NUMBERS

Gas Trouble - (513) 651-4466 OR 1-800-634-4300

Electric Trouble - (513) 651-4182 OR 1-800-543-5599

Name	Service Address	Account Number
Sharon Wilson	606 Fox Chase WY Maineville OH 45039	7190-2053-06-3

This month's Gas Cost Recovery (GCR) charge for customers purchasing their natural gas from Duke Energy is \$1.2454 per CCF, which includes a base GCR of \$1.1873 and Ohio excise tax of \$0.0581.

PRICE TO COMPARE: In order for an average residential customer to save money, an electric supplier must offer a price lower than 6.75 cents per kWh. Your Price to Compare may be different based on your usage. Visit www.duke-energy.com to calculate your individual Price to Compare or contact Duke Energy for a written explanation.

If you have any questions about gas supplier service received from IGSenergy: Interstate Gas, please call them at 1-877-444-7427 or write to: P O Box 9060 Dublin, OH 43017

Explanation of Current Charges			
Gas			
Meter -	000937630	Duke Energy	
CCF Usage -	8	Rate FTRT - Res Transportation	
Jun 18 - Jul 18		Fixed Delivery Service Charge	\$ 15.00
30 Days		Usage-Based Charge	
		8CCF @ \$ 0.40113400	3.21
		Gas Delivery Riders	2.54
		Applicable Surcharge	
		8CCF @ \$ 0.00250000	0.02
			\$ 20.77
		IGSenergy: Interstate Gas	
		Rate IS05 - IGSenergy: Interstate Gas	
		Gas Supplier Energy Chg	
		8CCF @ \$ 1.19900000	\$ 9.59
			9.59
		Total Current Gas Charges	\$ 30.36
Electric			
Meter -	095463367	Duke Energy	
kWh Usage -	960	Rate RS - Residential Svc-Summer	
Jun 18 - Jul 18		Distribution-Customer Chg	\$ 4.50
30 Days		Delivery Charges	
		Distribution-Energy Chg	
		960kWh @ \$ 0.01994900	19.15
		Rider TCR	5.45
		Delivery Riders	4.55
		Total Delivery Charges	\$ 29.15
		Generation Charges	
		Generation Energy Chg	
		960kWh @ \$ 0.04418000	42.41
		Rider FPP	11.21
		Rider AAC	6.41
		Generation Riders	12.95
		Total Generation Charges	\$ 72.98
			106.63
		Total Current Electric Charges	\$ 106.63

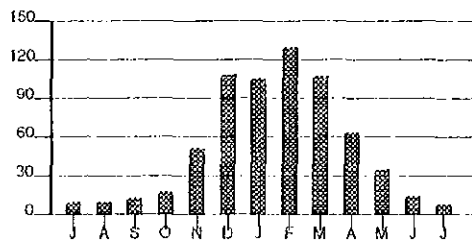
Explanation of Taxes		
Taxes		
	Warren County Sales Tax	\$ 0.62
		\$ 0.62
	Total Taxes	\$ 0.62

Agreement Information			
Summary			
Agreement Number -	2770623	Previous Agreement Balance	\$ 0.00
Agreement Amount -	\$ 1,004.65	Transfer From Current Billing	\$ 1,004.65
Agreement Date -	07/16/08	Current Agreement Amount Due	\$ 56.00cr
Number of Payments -	18	Agreement Balance	\$ 948.65
Monthly Amount Due -	\$ 56.00		

Name	Service Address	Account Number
Sharon Wilson	606 Fox Chase WY Maineville OH 45039	7190-2053-08-3

CCF

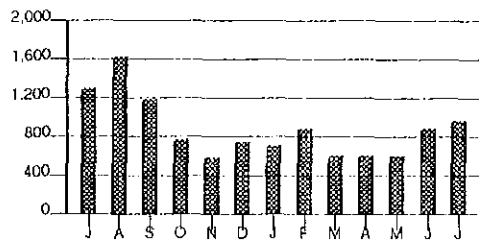
Gas Usage



Calculations based on most recent 12 month history
Total Usage 662
Average Usage 55

kWh

Electric Usage



Calculations based on most recent 12 month history
Total Usage 10,244
Average Usage 854

	JUL	AUG	SEP	OCT	NOV	DEC	JAN	FEB	MAR	APR	MAY	JUN	JUL
Gas	10	10	13	17	51	108	106	130	107	63	35	14	8
Electric	1,303	1,626	1,197	773	599	759	713	899	610	612	609	887	960



20440120210010123002

*Pay Thurs
\$129.00*

DISCONNECT NOTICE

Account Number 7190-2053-06-3

70 13

Due Date	Amount Due
Jan 9, 2009	\$ 1,631.09

*conf # 16471357
ck 3001 129.00*

\$ _____ \$ _____
HeatShare Contribution Amount Enclosed
(for Customer Assistance)



3001 3.50

00000768 CGE1 ZA 08353 - ZIPCODE 13 YYNNN 1oz

Sharon Wilson
606 Fox Chase Way
Maineville OH 45039-9399

PO Box 9001076
Louisville KY 40290-1076

410 00001631098 71902053063 010920094 00001655566

DISCONNECT NOTICE

1 PLEASE RETURN THE TOP PORTION WITH YOUR PAYMENT. 1

Page 1 of 3

Name /Service Address	For Inquiries Call	Account Number
Sharon Wilson 606 Fox Chase WY Maineville OH 45039	Duke Energy 513-651-5100 1-800-648-7777 IGSenergy: Interstate Gas 1-800-280-4474	7190-2053-06-3

Mail Payments To	Account Information
PO Box 9001076 Louisville KY 40290-1076	Payments after Dec 18 not included Bill prepared on Dec 18, 2008 Next meter reading Jan 20, 2009

IMPORTANT: If your service has not yet been disconnected, please pay \$1,072.16 immediately to avoid disconnection.

If your service is disconnected for non payment, in addition to a reconnection charge, you will be required to pay an additional deposit in the amount of \$169.00 before service is restored.

Meter	Number	Reading Date		Days	Meter Reading		Usage
		From	To		Previous	Present	
Gas	000937630	Nov 14	Dec 17	33	100	234	134
Elec	095463367	Nov 14	Dec 17	33	47482	48156	674

Gas - Residential	
Usage -	134 CCF
Duke Energy - Rate FTRT	\$ 42.54
IGSenergy: - Rate IS05	200.87
Interstate Gas	
Current Gas Charges	\$ 243.41

Electric - Residential	
Usage -	674 kWh
Duke Energy - Rate RS	\$ 83.48
Current Electric Charges	\$ 83.48

Current Billing	
Amt Due - Previous Bill	\$ 1,287.06
Late Payment Charge(s)	19.08
Balance Forward	1,306.14
Current Gas Charges	243.41
Current Electric Charges	83.48
Other Credits/Charges	15.00
Taxes	13.06
Current Amount Due	\$ 1,631.09

*12/22 paid 107.00
143.00
83.48
326.48
\$ 1524.69*

1/12 - called - will let us know when meter is checked

DISCONNECT NOTICE

Due Date	Amount Due	After Jan 9, 2009
Jan 9, 2009	\$ 1,631.09	\$ 1,655.56

Bill Payment Made Easy

e-Bill - View and pay your bill for free at www.duke-energy.com

BillPayer 2000® - Automatically pay from your checking account for 30¢/transaction - enroll at 1-800-991-7771

Speedpay® - Pay by phone 1-877-596-5068 with credit card or check a convenience fee will be charged.

PAYMENT OF BILLS

In order to avoid paying a late charge, please mail your payment to Duke Energy several days before the due date. Or, if you prefer, you may pay by phone through Speedpay, pay online with e-Bill, or pay automatically through BillPayer 2000®. Payments can also be made at a Duke Energy office or Pay Agent location. For more information about our bill payment options, please visit us at www.duke-energy.com or call 1-800-544-6900.

Disconnection of your utility service(s) will not result from failure to pay any non-tariffed or non-regulated products or services.

Under state law, the amount you are being billed for gas includes: (1) 4.89% State Excise Tax, (2) natural gas distribution taxes that have been in effect since 2001 and are currently at \$.01593 for the first 1,000 CCF, \$.00877 for the next 19,000 CCF and \$.00411 for all additional CCF and (3) Assessments to assist in the support of the operations of the PUCO and the Office of the Consumers Counsel that have been in effect since 1912 and 1977 respectively.

Under state law, the amount you are being billed for electric includes: (1) kilowatt-hour taxes that have been in effect since 2001 and are currently at \$.00465 for the first 2,000 kWh, \$.00419 for the next 13,000 kWh and \$.00363 for all additional kWh and, (2) Assessments to assist in the support of the PUCO and the Office of the Consumers Counsel that have been in effect since 1912 and 1977 respectively.

EXPLANATION OF BILL LANGUAGE

(The following terms will not appear on every bill)

CCF	Gas usage, measured in hundreds of cubic feet.	Generation Charges	Charges associated with the production of electricity.
CR	Credited amount.	Generation Riders (Electric)	Charges to recover certain costs related to the production of electricity.
Current Charges (Gas and Electric)	Total of all charges based on usage during the current billing period for gas and electric services.	Kilowatt-hour (kWh)	The unit of measure for the electricity you use. For example, you use one kWh of electricity to light a 100 watt light bulb for 10 hours.
Customer Charge	The fixed monthly basic distribution charge to partially cover costs for billing, meter reading, service line maintenance, and equipment.	Late Payment Charge	A 1.5% late charge is added to the overdue amount of the regulated portion of your bill if you do not pay by the bill due date.
Delivery Charges (Electric)	Charges for the operating expenses of delivering energy.	Meter Multiplier	A factor that the meter reading usage is multiplied by in order to obtain the correct energy usage.
Delivery Riders (Electric)	Charges to recover various costs associated with Duke Energy's electric operations and to fund Ohio energy-related programs.	Rate	Code that identifies the gas delivery or electric distribution billing tariff used to calculate the bill.
Distribution Charge	Charge for the use of local wires, transformers, substations, and other equipment used to deliver electricity to your home/business.	Rider AAC	Charges to recover changes in environmental compliance, homeland security and tax costs.
Estimated (E) and Actual Readings	An actual reading is a reading we take from your meter. On the months we are unable to read your meter, we calculate your bill based on your past usage. Adjustments may be needed later, when we take an actual meter reading. If you would like to read your own meter to avoid estimated bills, please call us.	Rider FPP	Charges to recover the cost of fuel and purchase power.
Fixed Delivery Service Charge	The fixed costs for delivering gas, which do not change with usage.	Rider TCR	Charges to recover transmission costs assessed by the regional transmission organization.
Gas Cost Information	The GAS COST RECOVERY (GCR) rate is the cost (per 100 cubic feet) of gas we purchase from our suppliers. This rate varies periodically as gas prices to us increase or decrease. Duke Energy makes no profit on this charge since it is based on the actual costs we pay our suppliers for the gas we purchase and resell. The GCR rate is approved by the Public Utilities Commission of Ohio.	Supplier Charges	Charges from a Gas and / or Electric Supplier other than Duke Energy.
		Usage	Amount of energy used during the billing period.
		Usage-Based Charge	Charges to recover various costs associated with Duke Energy's gas operations and to fund Ohio energy-related programs.

BILLING OR SERVICE INQUIRES OR COMPLAINTS

If you have a question or complaint about your bill or service, call us at (513) 421-9500, or from a toll area call 1-800-544-6900. Persons who have a hearing impairment may call our TDD/TTY toll free number, 1-800-752-3254. You may also write to our Customer Services Department at P.O. Box 960, Mail Drop 309C, Cincinnati, 45201. In addition, you may contact us by fax at (513) 287-2376, or by e-mail at www.duke-energy.com.

If your complaint is not resolved after you have called Duke Energy Ohio, or for general utility information, residential and business consumers may contact the Public Utilities Commission of Ohio for assistance at 1-800-686-7826 (toll free) or for TTY at 1-800-686-1570 (toll free), from 8:00 a.m. to 5:00 p.m. weekdays, or at www.puco.ohio.gov.

Residential customers may also contact the Ohio Consumers Counsel for assistance with complaints and utility issues at 1-877-742 5622 (toll free) from 8:00 a.m. to 5:00 p.m. weekdays, or at www.pickccc.org.

To obtain information about competitive gas offers, visit www.puco.ohio.gov or call 1-800-299-7271.

BUSINESS HOURS

OFFICE HOURS:

Cincinnati - 8:00 a.m. - 5:00p.m. Monday - Friday

Newport - 8:00 a.m. - 5:00p.m. Monday - Friday

SERVICE EMERGENCY NUMBERS

Gas Trouble - (513) 651-4466 OR 1-800-634-4300

Electric Trouble - (513) 651-4182 OR 1-800-543-5599

Name	Service Address	Account Number
Sharon Wilson	606 Fox Chase WY Maineville OH 45039	7190-2053-06-3

Taxes	
Taxes	\$ 13.06

The Public Utility Commission of Ohio approved an adjustment to Rider AAC effective December 1, 2008. A typical residential customer using 1,000 kWh per month will see an increase of approximately \$0.66 or 0.5%.

This month's Gas Cost Recovery (GCR) charge for customers purchasing their natural gas from Duke Energy is \$1.0290 per CCF, which includes a base GCR of \$0.9810 and Ohio excise tax of \$0.0480.

If you have any questions about gas supplier service received from IGSenergy: Interstate Gas, please call them at 1-800-280-4474 or write to: P O Box 9060 Dublin, OH 43017

PRICE TO COMPARE: In order for an average residential customer to save money, an electric supplier must offer a price lower than 7.83 cents per kWh. Your Price to Compare may be different based on your usage. Visit www.duke-energy.com to calculate your individual Price to Compare or contact Duke Energy for a written explanation.

Explanation of Current Charges			
Gas Meter - 000937630 CCF Usage - 134 Nov 14 - Dec 17 33 Days	Duke Energy		
	Rate FTRT - Res Transportation		
	Fixed Delivery Service Charge		\$ 20.25
	Usage-Based Charge		
	134 CCF @ \$ 0.10704400		14.34
	Gas Delivery Riders		7.98
	Applicable Surcharge		
	134 CCF @ \$ 0.00010000cr		0.01cr
			\$ 42.54
	IGSenergy: Interstate Gas		
	Rate IS05 - IGSenergy: Interstate Gas		
	Gas Supplier Energy Chg		
	134 CCF @ \$ 1.49900000		\$ 200.87
			200.87
	Total Current Gas Charges		\$ 243.41
	Duke Energy		
	Rate RS - Residential Svc-Winter		
	Distribution-Customer Chg		\$ 4.50
	Delivery Charges		
Electric Meter - 095463367 kWh Usage - 674 Nov 14 - Dec 17 33 Days	Distribution-Energy Chg		13.45
	674 kWh @ \$ 0.01994900		13.45
	Rider TCR		3.82
	Delivery Riders		3.22
	Total Delivery Charges		\$ 20.49
	Generation Charges		
	Generation Energy Chg		
	674 kWh @ \$ 0.04418000		29.78
	Rider FPP		14.66
	Rider AAC		4.94
	Generation Riders		9.11
	Total Generation Charges		\$ 58.49
			83.48
	Total Current Electric Charges		\$ 83.48

Explanation of Taxes		
Taxes	Warren County Sales Tax	\$ 13.06
	Total Taxes	\$ 13.06

DISCONNECT NOTICE

Name	Service Address	Account Number
Sharon Wilson	606 Fox Chase WY Maineville OH 45039	7190-2053-06-3

Explanation of Other Charges/Credits

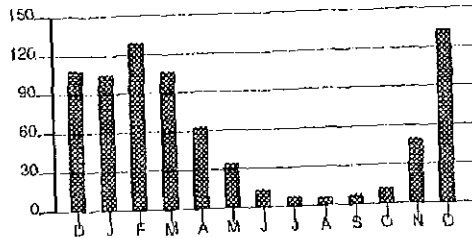
Other Credits/Charges		
	Cancel Misc Charge	\$ 15.00cr
	Total Other Credits/Charges	\$ 15.00cr

Agreement Information

Summary			
Agreement Number -	2831799	Previous Agreement Balance	\$ 0.00
Agreement Amount -	\$ 1,272.06	Transfer From Current Billing	\$ 1,272.06
Agreement Date -	12/01/08	Current Agreement Amount Due	\$ 1,272.06cr
Number of Payments -	12	Agreement Balance	\$ 0.00

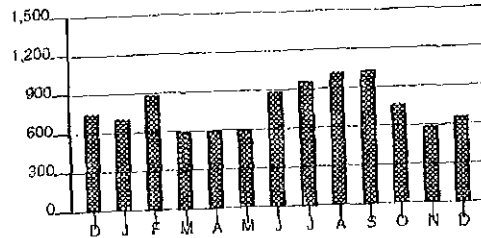
CCF

Gas Usage



kWh

Electric Usage



Calculations based on most recent 12 month history
Total Usage 675
Average Usage 56

Calculations based on most recent 12 month history
Total Usage 9,407
Average Usage 784

	DEC	JAN	FEB	MAR	APR	MAY	JUN	JUL	AUG	SEP	OCT	NOV	DEC
Gas	100	106	130	107	63	36	14	8	7	8	13	50	134
Electric	759	713	899	610	612	609	887	960	1,025	1,043	779	596	674

35340120300010076802

estimate only because meter was broke

*129.00 / mo for 12 months
129.00 / mo for 12 months
next read 1/20/09*

DISCONNECT NOTICE

Account Number 7190-2053-06-3

70 13

Due Date	Amount Due
Mar 17, 2009	\$ 1,824.23

\$ _____ \$ _____
HeatShare Contribution Amount Enclosed
(for Customer Assistance)

00001740 CGE3 ZA 09054 - OHDNPR 16 YYYNNY 1oz

Sharon Wilson
606 Fox Chase WY
Maineville OH 45039

PO Box 9001084
Louisville KY 40290-1084

410 00001824236 71902053063 031720095 00001851594

DISCONNECT NOTICE

↑ PLEASE RETURN THE TOP PORTION WITH YOUR PAYMENT. ↑

Page 1 of 3

Name / Service Address	For Inquiries Call	Account Number
Sharon Wilson 606 Fox Chase WY Maineville OH 45039	Duke Energy 513-651-5100 1-800-648-7777 IGSenergy: Interstate Gas 1-800-280-4474	7190-2053-06-3

Mail Payments To	Account Information
PO Box 9001084 Louisville KY 40290-1084	Payments after Feb 23 not included Last payment received Feb 17 Bill prepared on Feb 23, 2009 Next meter reading Mar 19, 2009

IMPORTANT- Your service may be disconnected if your past due amount of \$1,266.09 is not paid before 03/20/2009. A reconnection charge will be required. For questions, please call the number shown above.

If your service is disconnected for non payment, in addition to a reconnection charge, you will be required to pay an additional deposit in the amount of \$174.00 before service is restored.

different meter
→
→
→

Meter	Number	Reading Date From To	Days	Meter Reading Previous Present	Usage
Gas	000937630	Jan 20 Feb 05	16	375	448
Gas	000936031*	Feb 05 Feb 19	14	00000	36
Elec	095463367	Jan 20 Feb 19	30	48809	49328

73 109
36
519

* New Meter installed 2/5/09

\$1348.00

Gas - Residential	
Usage - 109 CCF	
Duke Energy - Rate FTRT	\$ 38.83
IGSenergy: - Rate IS33	97.01
Interstate Gas	
Current Gas Charges	\$ 135.84

Electric - Residential	
Usage - 519 kWh	
Duke Energy - Rate RS	\$ 62.77
Current Electric Charges	\$ 62.77

Current Billing	
Amt Due - Previous Bill	\$ 477.00
Payment(s) Received	129.00cr
Late Payment Charge(s)	5.22
Balance Forward	353.22
Current Gas Charges	135.84
Current Electric Charges	62.77
Agmt #2842926 Ending Bal	1,266.09
Taxes	6.31
Current Amount Due	\$ 1,824.23

135.84
62.77
198.61

Mar 17th - Due
" 19th Disconnect

DISCONNECT NOTICE		
Due Date	Amount Due	After
Mar 17, 2009	\$ 1,824.23	Mar 17, 2009
		\$ 1,851.59

Bill Payment Made Easy

e-Bill - View and pay your bill for free at www.duke-energy.com

BillPayer 2000® - Automatically pay from your checking account for 30¢/transaction - enroll at 1-800-991-7771

Speedpay® - Pay by phone 1-877-596-5068 with credit card or check a convenience fee will be charged.

PAYMENT OF BILLS

In order to avoid paying a late charge, please mail your payment to Duke Energy several days before the due date. Or, if you prefer, you may pay by phone through Speedpay, pay online with e-Bill, or pay automatically through BillPayer 2000®. Payments can also be made at a Duke Energy office or Pay Agent location. For more information about our bill payment options, please visit us at www.duke-energy.com or call 1-800-544-6900.

Disconnection of your utility service(s) will not result from failure to pay any non-tariffed or non-regulated products or services.

Under state law, the amount you are being billed for gas includes: (1) 4.89% State Excise Tax, (2) natural gas distribution taxes that have been in effect since 2001 and are currently at \$.01593 for the first 1,000 CCF, \$.00877 for the next 19,000 CCF and \$.00411 for all additional CCF and, (3) Assessments to assist in the support of the operations of the PUCO and the Office of the Consumers Counsel that have been in effect since 1912 and 1977 respectively.

Under state law, the amount you are being billed for electric includes: (1) kilowatt-hour taxes that have been in effect since 2001 and are currently at \$.00465 for the first 2,000 kWh, \$.00419 for the next 13,000 kWh and \$.00363 for all additional kWh and, (2) Assessments to assist in the support of the PUCO and the Office of the Consumers Counsel that have been in effect since 1912 and 1977 respectively.

EXPLANATION OF BILL LANGUAGE

(The following terms will not appear on every bill)

CCF	Gas usage, measured in hundreds of cubic feet.
CR	Credited amount.
Current Charges (Gas and Electric)	Total of all charges based on usage during the current billing period for gas and electric services.
Customer Charge	The fixed monthly basic distribution charge to partially cover costs for billing, meter reading, service line maintenance, and equipment.
Delivery Charges (Electric)	Charges for the operating expenses of delivering energy.
Delivery Riders (Electric)	Charges to recover various costs associated with Duke Energy's electric operations and to fund Ohio energy-related programs.
Distribution - Energy Charge	Charge for the use of local wires, transformers, substations, and other equipment used to deliver electricity to your home/business.
Early Return Premium	A premium paid for early return to the standard service offer.
Estimated (E) and Actual Readings	An actual reading is a reading we take from your meter. On the months we are unable to read your meter, we calculate your bill based on your past usage. Adjustments may be needed later, when we take an actual meter reading. If you would like to read your own meter to avoid estimated bills, please call us.
Fixed Delivery Service Charge	The fixed costs for delivering gas, which do not change with usage.

Gas Cost Recovery	The GAS COST RECOVERY (GCR) rate is the cost (per 100 cubic feet) of gas we purchase from our suppliers. This rate varies periodically as gas prices to us increase or decrease. Duke Energy makes no profit on this charge since it is based on the actual costs we pay our suppliers for the gas we purchase and resell. The GCR rate is approved by the Public Utilities Commission of Ohio.
Generation Charges	Charges associated with the production of electricity.
Kilowatt-hour (kWh)	The unit of measure for the electricity you use. For example, you use one kWh of electricity to light a 100 watt light bulb for 10 hours.
Late Payment Charge	A 1.5% late charge is added to the overdue amount of the regulated portion of your bill if you do not pay by the bill due date.
Meter Multiplier	A factor that the meter reading usage is multiplied by in order to obtain the correct energy usage.
Rate	Code that identifies the gas delivery or electric distribution billing tariff used to calculate the bill.
Rider AAG	Charges to recover changes in environmental compliance, homeland security and tax costs.
Rider FPP	Charges to recover the cost of fuel and purchase power.
Rider TCR	Charges to recover transmission costs assessed by the regional transmission organization.
Supplier Charges	Charges from a Gas and / or Electric Supplier other than Duke Energy.
Usage	Amount of energy used during the billing period.
Usage-Based Charge	Charges to recover various costs associated with Duke Energy's gas operations and to fund Ohio energy-related programs.

BILLING OR SERVICE INQUIRES OR COMPLAINTS

If you have a question or complaint about your bill or service, call us at (513) 421-9500, or from a toll area call 1-800-544-6900. Persons who have a hearing impairment may call our TDD/TTY toll free number, 1-800-752-3254. You may also write to our Customer Services Department at P.O. Box 960, Mail Drop 309C, Cincinnati, 45201. In addition, you may contact us by fax at (513) 287-2376, or by e-mail at www.duke-energy.com.

If your complaint is not resolved after you have called Duke Energy Ohio, or for general utility information, residential and business consumers may contact the Public Utilities Commission of Ohio for assistance at 1-800-686-7826 (toll free) or for TTY at 1-800-686-1570 (toll free), from 8:00 a.m. to 5:00 p.m. weekdays, or at www.puco.ohio.gov.

Residential customers may also contact the Ohio Consumers Counsel for assistance with complaints and utility issues at 1-877-742-5622 (toll free) from 8:00 a.m. to 5:00 p.m. weekdays, or at www.pickocc.org.

To obtain information about competitive gas offers, visit www.puco.ohio.gov or call 1-800-299-7271.

BUSINESS HOURS

OFFICE HOURS:

Cincinnati - 8:00 a.m. - 5:00 p.m. Monday - Friday

Newport - 8:00 a.m. - 5:00 p.m. Monday - Friday

SERVICE EMERGENCY NUMBERS

Gas Trouble - (513) 651-4466 or 1-800-634-4300

Electric Trouble - (513) 651-4182 or 1-800-543-5599



05440120170010174001

Name	Service Address	Account Number
Sharon Wilson	606 Fox Chase WY Maineville OH 45039	7190-2053-06-3

Taxes	
Taxes	\$ 6.31

PLEASE NOTE: Our records indicate that your previous bill was not paid in full. As a result, you have been removed from your agreement. The entire agreement balance is now due.

This month's Gas Cost Recovery (GCR) charge for customers purchasing their natural gas from Duke Energy is \$0.9914 per CCF, which includes a base GCR of \$0.9452 and Ohio excise tax of \$0.0462.

PRICE TO COMPARE: In order for an average residential customer to save money, an electric supplier must offer a price lower than 7.97 cents per kWh. Your Price to Compare may be different based on your usage. Visit www.duke-energy.com to calculate your individual Price to Compare or contact Duke Energy for a written explanation.

If you have any questions about gas supplier service received from IGSenergy: Interstate Gas, please call them at 1-800-280-4474 or write to: P O Box 9060 Dublin, OH 43017

Explanation of Current Charges			
Gas			
Meter -	000937630	Duke Energy	
CCF Usage -	73	Rate FTRT - Res Transportation	
Jan 20 - Feb 05		Fixed Delivery Service Charge	\$ 20.25
16 Days		Usage-Based Charge	
		109CCF @ \$ 0.10704400	11.67
Meter - *	000936031	Gas Delivery Riders	6.92
CCF Usage -	36	Applicable Surcharge	
		109CCF @ \$ 0.00010000cr	0.01cr
			\$ 38.83
Billed CCF -	109	IGSenergy: Interstate Gas	
Feb 05 - Feb 19		Rate IS33 - IGSenergy: Interstate Gas	
14 Days		Gas Supplier Energy Chg	
* Meter Change		109CCF @ \$ 0.89000000	\$ 97.01
			97.01
Total Current Gas Charges			\$ 135.84
Electric			
Meter -	095463367	Duke Energy	
kWh Usage -	519	Rate RS - Residential Svc-Winter	
Jan 20 - Feb 19		Distribution-Customer Chg	\$ 4.50
30 Days		Delivery Charges	
		Distribution-Energy Chg	
		519kWh @ \$ 0.01994900	10.35
		Delivery Riders	6.15
		Total Delivery Charges	\$ 16.50
		Generation Charges	
		Generation Energy Chg	
		519kWh @ \$ 0.04023800	20.88
		Rider FPP	13.85
		Rider AAC	3.81
		Rider TCR	3.23
		Total Generation Charges	\$ 41.77
			62.77
Total Current Electric Charges			\$ 62.77

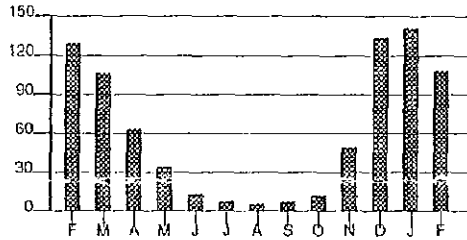
Explanation of Taxes		
Taxes		
	Warren County Sales Tax	\$ 6.31
		\$ 6.31
Total Taxes		\$ 6.31

Name	Service Address	Account Number
Sharon Wilson	606 Fox Chase WY Maineville OH 45039	7190-2053-06-3

Agreement Information			
Summary		Previous Agreement Balance	\$ 1,266.09
Agreement Number -	2842926	Current Agreement Amount Due	\$ 1,266.09cr
Agreement Amount -	\$ 1,524.09	Agreement Balance	\$ 0.00
Agreement Date -	12/26/08		
Number of Payments -	12		

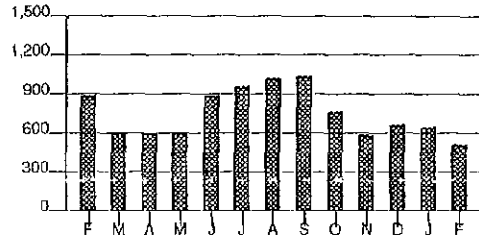
CCF

Gas Usage



kWh

Electric Usage



Calculations based on most recent 12 month history
Total Usage 689
Average Usage 57

Calculations based on most recent 12 month history
Total Usage 8,967
Average Usage 747

	FEB	MAR	APR	MAY	JUN	JUL	AUG	SEP	OCT	NOV	DEC	JAN	FEB
Gas	130	107	63	36	14	8	7	8	13	50	134	141	109
Electric	899	610	612	609	887	960	1,025	1,043	779	596	674	653	519

05440120170010174002

11/17/08 - 12/17/08 134

Account Number 7190-2053-06-3 70 13

Testing meter 2/5

Due Date	Amount Due
Feb 12, 2009	\$ 477.00

\$ _____ \$ _____
HeatShare Contribution Amount Enclosed
(for Customer Assistance)



00000930 CGE1 ZA 09022 - ZIPCODE 13 YYYNN 1oz

Sharon Wilson
606 Fox Chase Way
Maineville OH 45039-9399

PO Box 9001076
Louisville KY 40290-1076

400 00000477001 71902053063 021220094 00000484164

PLEASE RETURN THE TOP PORTION WITH YOUR PAYMENT. Page 1 of 4

Name/Service Address	For Inquiries Call	Account Number
----------------------	--------------------	----------------

Sharon Wilson 606 Fox Chase WY Maineville OH 45039	Duke Energy IGSenergy: Interstate Gas	513-421-9500 1-800-544-6900 1-800-280-4474	7190-2053-06-3
--	--	--	----------------

Mail Payments To	Account Information
------------------	---------------------

PO Box 9001076 Louisville KY 40290-1076	Payments after Jan 21 not included Last payment received Jan 13	Bill prepared on Jan 21, 2009 Next meter reading Feb 18, 2009
--	--	--

Meter	Number	Reading From	Reading To	Days	Meter Reading Previous	Meter Reading Present	Usage
-------	--------	--------------	------------	------	------------------------	-----------------------	-------

Gas	000937630	Dec 17	Jan 20	34	234	375	141
Elec	095463367	Dec 17	Jan 20	34	48156	48809	653

*4/5/09
verified
6.5
w/ia
2224
duke
energy
new
an*

(next cycle) Jan 24 - Feb 24 (on new plan) Feb 20 - Mar 20 (on new plan)

Gas - Residential	
Usage -	141 CCF
Duke Energy - Rate FTRT	\$ 43.59
IGSenergy: - Rate IS05	211.36
Interstate Gas	
Current Gas Charges	\$ 254.95

Electric - Residential	
Usage -	308 kWh
Duke Energy - Rate RS	\$ 38.23
Usage -	345 kWh
Duke Energy - Rate RS	41.08
Current Electric Charges	\$ 79.31
Old Rate Effective Dec 17 To Jan 02	
New Rate Effective Jan 02 To Jan 20	

Taxes	
Taxes	\$ 13.74

Current Billing	
Amt Due - Previous Bill	\$ 1,631.09
Payment(s) Received	236.00cr
Balance Forward	1,395.09
Current Gas Charges	254.95
Current Electric Charges	79.31
Agmt #2842926 Amt Due	129.00
Transfer to Agmt #2842926	1,524.09cr
Agmt #2842926 Amt Due	107.00
Applied to Agmt Bal	22.00
Taxes	13.74
Current Amount Due	\$ 477.00

Account Balance	
Current Billing	\$ 477.00
Agreement Balance	1,266.09
Total Account Balance	\$ 1,743.09

Jan 18 not credited - 129.00
Elyahuel Dept
Forest 2874645 2/16 pay - 129.00
1614.09
1485.09

129X12 = 1548 on plan

Due Date	Amount Due	After Feb 12, 2009
Feb 12, 2009	\$ 477.00	\$ 484.16



visit us at www.duke-energy.com

Bill Payment Made Easy

e-Bill - View and pay your bill for free at www.duke-energy.com

BillPayer 2000® Automatically pay from your checking account for 30¢/transaction - enroll at 1-800-991-7771

Speedpay® Pay by phone 1-877-596-5068 with credit card or check a convenience fee will be charged.

PAYMENT OF BILLS

In order to avoid paying a late charge, please mail your payment to Duke Energy several days before the due date. Or, if you prefer, you may pay by phone through Speedpay, pay online with e-Bill, or pay automatically through BillPayer 2000®. Payments can also be made at a Duke Energy office or Pay Agent location. For more information about our bill payment options, please visit us at www.duke-energy.com or call 1-800-544-6900.

Disconnection of your utility service(s) will not result from failure to pay any non-tariffed or non-regulated products or services.

Under state law, the amount you are being billed for gas includes: (1) 4.89% State Excise Tax, (2) natural gas distribution taxes that have been in effect since 2001 and are currently at \$.01593 for the first 1,000 CCF, \$.00877 for the next 19,000 CCF and \$.00411 for all additional CCF and, (3) Assessments to assist in the support of the operations of the PUCO and the Office of the Consumers Counsel that have been in effect since 1912 and 1977 respectively.

Under state law, the amount you are being billed for electric includes: (1) kilowatt-hour taxes that have been in effect since 2001 and are currently at \$.00465 for the first 2,000 kWh, \$.00419 for the next 13,000 kWh and \$.00363 for all additional kWh and, (2) Assessments to assist in the support of the PUCO and the Office of the Consumers Counsel that have been in effect since 1912 and 1977 respectively.

EXPLANATION OF BILL LANGUAGE

(The following terms will not appear on every bill)

CCF	Gas usage, measured in hundreds of cubic feet.	Generation Charges	Charges associated with the production of electricity.
CR	Credited amount.	Generation Riders (Electric)	Charges to recover certain costs related to the production of electricity.
Current Charges (Gas and Electric)	Total of all charges based on usage during the current billing period for gas and electric services.	Kilowatt-hour (kWh)	The unit of measure for the electricity you use. For example, you use one kWh of electricity to light a 100 watt light bulb for 10 hours.
Customer Charge	The fixed monthly basic distribution charge to partially cover costs for billing, meter reading, service line maintenance, and equipment.	Late Payment Charge	A 1.5% late charge is added to the overdue amount of the regulated portion of your bill if you do not pay by the bill due date.
Delivery Charges (Electric)	Charges for the operating expenses of delivering energy.	Meter Multiplier	A factor that the meter reading usage is multiplied by in order to obtain the correct energy usage.
Delivery Riders (Electric)	Charges to recover various costs associated with Duke Energy's electric operations and to fund Ohio energy-related programs.	Rate	Code that identifies the gas delivery or electric distribution billing tariff used to calculate the bill.
Distribution Charge	Charge for the use of local wires, transformers, substations, and other equipment used to deliver electricity to your home/business.	Rider AAC	Charges to recover changes in environmental compliance, homeland security and tax costs.
Estimated (E) and Actual Readings	An actual reading is a reading we take from your meter. On the months we are unable to read your meter, we calculate your bill based on your past usage. Adjustments may be needed later, when we take an actual meter reading. If you would like to read your own meter to avoid estimated bills, please call us.	Rider FPP	Charges to recover the cost of fuel and purchase power.
Fixed Delivery Service Charge	The fixed costs for delivering gas, which do not change with usage.	Rider TCR	Charges to recover transmission costs assessed by the regional transmission organization.
Gas Cost Information	The GAS COST RECOVERY (GCR) rate is the cost (per 100 cubic feet) of gas we purchase from our suppliers. This rate varies periodically as gas prices to us increase or decrease. Duke Energy makes no profit on this charge since it is based on the actual costs we pay our suppliers for the gas we purchase and resell. The GCR rate is approved by the Public Utilities Commission of Ohio.	Supplier Charges	Charges from a Gas and / or Electric Supplier other than Duke Energy.
		Usage	Amount of energy used during the billing period.
		Usage-Based Charge	Charges to recover various costs associated with Duke Energy's gas operations and to fund Ohio energy-related programs.

BILLING OR SERVICE INQUIRES OR COMPLAINTS

If you have a question or complaint about your bill or service, call us at (513) 421-9500, or from a toll area call 1-800-544-6900. Persons who have a hearing impairment may call our TDD/TTY toll free number, 1-800-752-3254. You may also write to our Customer Services Department at P.O. Box 960, Mail Drop 309C, Cincinnati, 45201. In addition, you may contact us by fax at (513) 287-2376, or by e-mail at www.duke-energy.com.

If your complaint is not resolved after you have called Duke Energy Ohio, or for general utility information, residential and business consumers may contact the Public Utilities Commission of Ohio for assistance at 1-800-686-7826 (toll free) or for TTY at 1-800-686-1570 (toll free), from 8:00 a.m. to 5:00 p.m. weekdays, or at www.puco.ohio.gov.

Residential customers may also contact the Ohio Consumers Counsel for assistance with complaints and utility issues at 1-877-742-5622 (toll free) from 8:00 a.m. to 5:00 p.m. weekdays, or at www.pucoccc.org.

To obtain information about competitive gas offers, visit www.puco.ohio.gov or call 1-800-299-7271.

BUSINESS HOURS

OFFICE HOURS:

Cincinnati - 8:00 a.m. - 5:00 p.m. Monday - Friday

Newport - 8:00 a.m. - 5:00 p.m. Monday - Friday

SERVICE EMERGENCY NUMBERS

Gas Trouble - (513) 651-4466 OR 1-800-634-4300

Electric Trouble - (513) 651-4182 OR 1-800-543-5599

0224012009001005000

Name	Service Address	Account Number
Sharon Wilson	606 Fox Chase WY Maineville OH 45039	7190-2053-06-3

This month's Gas Cost Recovery (GCR) charge for customers purchasing their natural gas from Duke Energy is \$0.9736 per CCF, which includes a base GCR of \$0.9282 and Ohio excise tax of \$0.0454.

The Public Utilities Commission of Ohio approved Duke's Electric Security Plan, which results in an increase in the base price of generation of approximately 2% in 2009 and 2010. However, due to adjustments to Riders SAW (formerly Rider DSM) SRT, and USR (all part of the "Distribution Riders"), Rider TCR and Rider FPP, a typical residential customer using 1,000 kWh per month will see a decrease of approximately \$4.58 or 3.8% per month in the 1st quarter beginning January 1, 2009.

If you have any questions about gas supplier service received from IGSenergy: Interstate Gas, please call them at 1-800-280-4474 or write to: P O Box 9060 Dublin, OH 43017

PRICE TO COMPARE: In order for an average residential customer to save money, an electric supplier must offer a price lower than 7.97 cents per kWh. Your Price to Compare may be different based on your usage. Visit www.duke-energy.com to calculate your individual Price to Compare or contact Duke Energy for a written explanation.

Explanation of Current Charges			
Gas Meter -	000937630	Duke Energy	
CCF Usage -	141	Rate FTRT - Res Transportation	
Dec 17 - Jan 20		Fixed Delivery Service Charge	\$ 20.25
34 Days		Usage-Based Charge	
		141 CCF @ \$ 0.10704400	15.09
		Gas Delivery Riders	8.26
		Applicable Surcharge	
		141 CCF @ \$ 0.00010000cr	0.01cr
			\$ 43.59
		IGSenergy: Interstate Gas	
		Rate IS05 - IGSenergy: Interstate Gas	
		Gas Supplier Energy Chg	
		141 CCF @ \$ 1.49900000	\$ 211.36
			211.36
		Total Current Gas Charges	\$ 254.95

2/5/09 delivery charges change quarterly
per IGS Chris X2224
(800)280 4474

Name		Service Address	Account Number
Sharon Wilson		606 Fox Chase WY Maineville OH 45039	7190-2053-06-3
Electric Meter - 095463367 kWh Usage - 653 Dec 17 - Jan 20 34 Days		Duke Energy Rate RS - Residential Svc-Winter Old Rate Effective Dec 17 To Jan 02 Distribution-Customer Chg \$ 2.12 Delivery Charges Distribution-Energy Chg 308kWh @ \$ 0.01994900 6.14 Rider TCR 1.75 Delivery Riders 1.47 Total Delivery Charges \$ 9.36 Generation Charges Generation Energy Chg 308kWh @ \$ 0.04418000 13.61 Rider FPP 6.70 Rider AAC 2.26 Generation Riders 4.18 Total Generation Charges \$ 26.75	38.23
Duke Energy Rate RS - Residential Svc-Winter New Rate Effective Jan 02 To Jan 20 Distribution-Customer Chg \$ 2.38 Delivery Charges Distribution-Energy Chg 345kWh @ \$ 0.01994900 6.88 Delivery Riders 4.06 Total Delivery Charges \$ 10.94 Generation Charges Generation Energy Chg 345kWh @ \$ 0.04023800 13.88 Rider FPP 9.20 Rider AAC 2.53 Rider TCR 2.15 Total Generation Charges \$ 27.76		41.08	
		Total Current Electric Charges	\$ 79.31

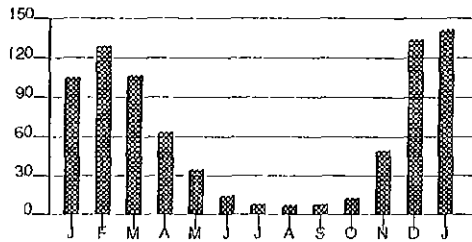
Explanation of Taxes		
Taxes	Warren County Sales Tax	\$ 13.74
	Total Taxes	\$ 13.74

Agreement Information			
Summary		Previous Agreement Balance	\$ 0.00
Agreement Number -	2842926	Transfer From Current Billing	\$ 1,524.09
Agreement Amount -	\$ 1,524.09	Current Agreement Amount Due	\$ 236.00cr
Agreement Date -	12/26/08	Credit / Debit Other	\$ 22.00cr
Number of Payments -	12	Agreement Balance	\$ 1,266.09
Monthly Amount Due -	\$ 129.00		

Name	Service Address	Account Number
Sharon Wilson	606 Fox Chase WY Maineville OH 45039	7190-2053-06-3

CCF

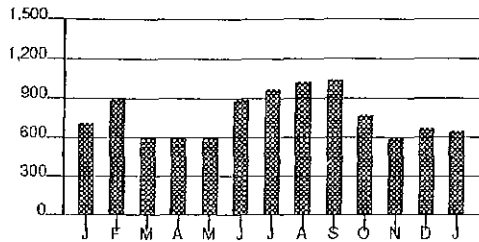
Gas Usage



Calculations based on most recent 12 month history
Total Usage 710
Average Usage 59

kWh

Electric Usage



Calculations based on most recent 12 month history
Total Usage 9,347
Average Usage 779

2008	JAN	FEB	MAR	APR	MAY	JUN	JUL	AUG	SEP	OCT	NOV	DEC	2009
Gas	105	130	107	63	35	14	8	7	8	13	50	134	141
Electric	713	899	610	612	609	887	960	1,025	1,043	779	596	674	853

1/20/09 My Photography of Gas Meter read 355

1/20/09 Duke read 375

IGS
12/15-01/15 .999/ccf

~ 234 previous

141 usage
CCF

on month to month
started 3/19/2007
signed up 2/18/07

last 3 billing cycle

rate 1.499 per CCF

Nov 14 - Dec 14 .99/4
Dec 14 - Jan 20 2/4/09

IGS Ohio Choice Program
any fee to change? none

Duke Randy talk 2/4/09

fee \$4.00 to change
back to Duke

recall to switch

write to:

- (re) rate change
- (re) how much amount was involved
- (re) date meter changed

Revenue Recovery Dept

- Debbie Sending e/m Customer Service
+ w/c us

- calculated on rate in effect 5/19/07 - 5/19/08 (IGS rate 3/19/07)



02240120080010093003

See New 1-YR charges

Account Number 7190-2053-06-3

70 13

5/19/07 - 5/19/08

Due Date	Amount Due
Jul 17, 2008	\$ 1,088.97



00025641 CGE1 ZA 08178 - ZIPCODE 18 YYYNNN 2oz

Sharon Wilson
606 Fox Chase Way
Maineville OH 45039-9399

*old defective meter
000437268*

PO Box 9001076
Louisville KY 40290-1076

HeatShare Contribution (for Customer Assistance) Amount Enclosed

400 00001088971 71902053063 071720080 00001105302

PLEASE RETURN THE TOP PORTION WITH YOUR PAYMENT.

Page 1 of 6

Name / Service Address	For Inquiries Call	Account Number
Sharon Wilson 606 Fox Chase WY Maineville OH 45039	Duke Energy 513-421-9500 1-800-544-6900 IGSenergy: Interstate Gas 1-877-444-7427	7190-2053-06-3

Mail Payments To	Account Information
PO Box 9001076 Louisville KY 40290-1076	Payments after Jun 25 not included Last payment received May 29 Bill prepared on Jun 25, 2008 Next meter reading Jul 17, 2008

Meter	Number	Reading Date From To	Days	Meter Reading Previous	Present	Usage
Gas	000937630	May 19 Jun 18	30	00000	14	14
Elec	095463367	May 19 Jun 18	30	42192	43079	887

** New gas meter installed 5/19/08*

Gas - Residential	
Usage - 14 CCF	
Duke Energy - Rate FTRT	\$ 23.54
IGSenergy: - Rate IS05	15.39
Interstate Gas	
Current Gas Charges	\$ 38.93

Electric - Residential	
Usage - 887 kWh	
Duke Energy - Rate RS	\$ 99.29
Current Electric Charges	\$ 99.29

Taxes	
Taxes	\$ 44.53

Current Billing	
Amt Due - Previous Bill	\$ 303.03
Payment(s) Received	218.71cr
Late Payment Charge(s)	1.26
Canceled Charges:	
Gas Charges	152.91cr
Prior Month(s) Charges:	
Gas Charges	973.55
Balance Forward	906.22
Current Gas Charges	38.93
Current Electric Charges	99.29
Taxes	44.53
Current Amount Due	\$ 1,088.97

820.65 paid
no credit 84.32 paid
83.72/mo
12 1004.65

Should payment of this bill by the due date present a problem, please call us at the number listed in the "For Inquiries Call" section of your bill.

This bill reflects canceled and rebilled gas charges for prior months.

139.22
84.00
\$ 223.22

Due Date	Amount Due	After Jul 17, 2008
Jul 17, 2008	\$ 1,088.97	\$ 1,105.30

Bill Payment Made Easy

e-Bill - View and pay your bill for free at www.duke-energy.com

BillPayer 2000® - Automatically pay from your checking account for 30¢/transaction - enroll at 1-800-991-7771

Speedpay® - Pay by phone 1-877-596-5068 with credit card or check a convenience fee will be charged.

PAYMENT OF BILLS

In order to avoid paying a late charge, please mail your payment to Duke Energy several days before the due date. Or, if you prefer, you may pay by phone through Speedpay, pay online with e-Bill, or pay automatically through BillPayer 2000®. Payments can also be made at a Duke Energy office or Pay Agent location. For more information about our bill payment options, please visit us at www.duke-energy.com or call 1-800-544-6900.

Disconnection of your utility service(s) will not result from failure to pay any non-tariffed or non-regulated products or services.

Under state law, the amount you are being billed for gas includes: (1) 4.89% State Excise Tax, (2) natural gas distribution taxes that have been in effect since 2001 and are currently at \$.01593 for the first 1,000 CCF, \$.00877 for the next 19,000 CCF and \$.00411 for all additional CCF and, (3) Assessments to assist in the support of the operations of the PUCO and the Office of the Consumers Counsel that have been in effect since 1912 and 1977 respectively.

Under state law, the amount you are being billed for electric includes: (1) kilowatt-hour taxes that have been in effect since 2001 and are currently at \$.00465 for the first 2,000 kWh, \$.00419 for the next 13,000 kWh and \$.00363 for all additional kWh and, (2) Assessments to assist in the support of the PUCO and the Office of the Consumers Counsel that have been in effect since 1912 and 1977 respectively.

EXPLANATION OF BILL LANGUAGE

(The following terms will not appear on every bill)

CCF	Gas usage, measured in hundreds of cubic feet.	Gas Delivery Riders	Charges to recover various costs associated with Duke Energy's gas operations and to fund Ohio energy-related programs.
CR	Credited amount.	Generation Charges	Charges associated with the production of electricity.
Current Charges (Gas and Electric)	Total of all charges based on usage during the current billing period for gas and electric services.	Generation Riders (Electric)	Charges to recover certain costs related to the production of electricity.
Customer Charge	The fixed monthly basic distribution charge to partially cover costs for billing, meter reading, service line maintenance, and equipment.	Kilowatt-hour (kWh)	The unit of measure for the electricity you use. For example, you use one kWh of electricity to light a 100 watt light bulb for 10 hours.
Delivery Charges (Electric & Gas)	Charges for the operating expenses of delivering energy.	Late Payment Charge	A 1.5% late charge is added to the overdue amount of the regulated portion of your bill if you do not pay by the bill due date.
Delivery Riders (Electric)	Charges to recover various costs associated with Duke Energy's electric operations and to fund Ohio energy-related programs.	Meter Multiplier	A factor that the meter reading usage is multiplied by in order to obtain the correct energy usage.
Distribution Charge	Charge for the use of local wires, transformers, substations, and other equipment used to deliver electricity to your home/business.	Rate	Code that identifies the gas delivery or electric distribution billing tariff used to calculate the bill.
Estimated (E) and Actual Readings	An actual reading is a reading we take from your meter. On the months we are unable to read your meter, we calculate your bill based on your past usage. Adjustments may be needed later, when we take an actual meter reading. If you would like to read your own meter to avoid estimated bills, please call us.	Rider ACC	Charges to recover changes in environmental compliance, homeland security and tax costs.
Gas Cost Information	The GAS COST RECOVERY (GCR) rate is the cost (per 100 cubic feet) of gas we purchase from our suppliers. This rate varies periodically as gas prices to us increase or decrease. Duke Energy makes no profit on this charge since it is based on the actual costs we pay our suppliers for the gas we purchase and resell. The GCR rate is approved by the Public Utilities Commission of Ohio.	Rider FPP	Charges to recover the cost of fuel and purchase power.
		Rider TCR	Charges to recover transmission costs assessed by the regional transmission organization.
		Supplier Charges	Charges from a Gas and/or Electric Supplier other than Duke Energy.
		Usage	Amount of energy used during the billing period.

BILLING OR SERVICE INQUIRES OR COMPLAINTS

If you have a question or complaint about your bill or service, call us at (513) 421-9500, or from a toll area call 1-800-544-6900. Persons who have a hearing impairment may call our TDD/TTY toll free number, 1-800-752-3254. You may also write to our Customer Services Department at P.O. Box 960, Mail Drop 309C, Cincinnati, 45201. In addition, you may contact us by fax at (513) 287-2376, or by e-mail at www.duke-energy.com.

If your complaint is not resolved after you have called Duke Energy Ohio, or for general utility information, residential and business consumers may contact the Public Utilities Commission of Ohio for assistance at 1-800-686-7826 (toll free) or for TTY at 1-800-686-1570 (toll free), from 8:00 a.m. to 5:00 p.m. weekdays, or at www.puco.ohio.gov.

Residential customers may also contact the Ohio Consumers Counsel for assistance with complaints and utility issues at 1-877-742-5822 (toll free) from 8:00 a.m. to 5:00 p.m. weekdays, or at www.pickccc.org.

To obtain information about competitive gas offers, visit www.puco.ohio.gov or call 1-800-299-7271.

BUSINESS HOURS

OFFICE HOURS:

Cincinnati - 8:00 a.m. - 5:00 p.m. Monday - Friday

Newport - 8:00 a.m. - 5:00 p.m. Monday - Friday

SERVICE EMERGENCY NUMBERS

Gas Trouble - (513) 651-4466 OR 1-800-634-4300

Electric Trouble - (513) 651-4182 OR 1-800-543-5599



visit us at www.duke-energy.com

Name	Service Address	Account Number
Sharon Wilson	606 Fox Chase WY Maineville OH 45039	7190-2053-06-3

At Duke Energy, we care about your safety. In recognition of National Safety Month, we encourage you to review our electric and gas safety tips online at www.duke-energy.com.

This month's Gas Cost Recovery (GCR) charge for customers purchasing their natural gas from Duke Energy is \$1.1550 per CCF, which includes a base GCR of \$1.1012 and Ohio excise tax of \$0.0538.

CHANGES IN GAS BASE RATES On July 18, 2007 Duke Energy filed an application to increase rates. On May 28, 2008, in Case No. 07-589-GA-AIR, the Public Utilities Commission of Ohio approved an agreement of all the parties to allow Duke Energy an increase of \$18.2 million in natural gas base rates. The PUCO also redesigned the rates so that most of the fixed costs for delivering gas, which do not change with usage, such as the pipes in the ground, meters, billing and meter reading, will be charged in a flat monthly rate. This results in spreading the costs for delivering gas more evenly throughout the year, instead of recovering most of them during the winter months when bills are already high.

The flat monthly rate for residential customers will be \$15.00 this summer, increasing to \$20.25 in October and to 25.33 a year from now. The usage based gas delivery charge for residential customers will be \$.401 per hundred cubic feet for this summer; it will then decrease in October 2008 to \$.107 and decrease again in June 2009 to \$.041. A residential customer using 6,700 cubic feet of natural gas will see their monthly bill increase in the first year by \$3.35, which includes the current cost of gas. In the second year, the monthly bill will increase another \$.68, based on current gas costs. You can obtain further information by contacting Duke Energy at (513)421-9500, or call 1-800-544-6900. You may also contact us at www.duke-energy.com.

PRICE TO COMPARE: In order for an average residential customer to save money, an electric supplier must offer a price lower than 6.81 cents per kWh. Your Price to Compare may be different based on your usage. Visit www.duke-energy.com to calculate your individual Price to Compare or contact Duke Energy for a written explanation.

If you have any questions about gas supplier service received from IGSenergy: Interstate Gas, please call them at 1-877-444-7427 or write to: P O Box 9060 Dublin, OH 43017

Explanation of Current Charges			
Gas			
Meter -	000937630	Duke Energy	
CCF Usage -	14	Rate FTRT - Res Transportation	
May 19 - Jun 18		Customer Charge	\$ 15.00
30 Days		Gas Delivery Charge	
		14 CCF @ \$ 0.40113400	5.62
		Gas Delivery Riders	2.88
		Applicable Surcharge	
		14 CCF @ \$ 0.00250000	0.04
			\$ 23.54
		IGSenergy: Interstate Gas	
		Rate IS05 - IGSenergy: Interstate Gas	
		Gas Supplier Energy Chg	
		14 CCF @ \$ 1.09900000	\$ 15.39
			15.39
		Total Current Gas Charges	\$ 38.93

May 19 - June 18, 2008

June Letter 08

Name		Service Address	Account Number
Sharon Wilson		606 Fox Chase WY Maineville OH 45039	7190-2053-06-3
Electric		Duke Energy	
Meter -	095463367	Rate RS - Residential Svc-Summer	
kWh Usage -	887		
May 19 - Jun 18		Distribution-Customer Chg	\$ 4.50
30 Days		Delivery Charges	
		Distribution-Energy Chg	
		887kWh @ \$ 0.01994900	17.69
		Rider TCR	5.03
		Delivery Riders	4.21
		Total Delivery Charges	\$ 26.93
		Generation Charges	
		Generation Energy Chg	
		887kWh @ \$ 0.04418000	39.19
		Rider FPP	10.82
		Rider AAC	5.92
		Generation Riders	11.93
		Total Generation Charges	\$ 67.86
			99.29
Total Current Electric Charges			\$ 99.29

Tacked onto Bill 5/19/07 - 5/19/08

Explanation of Prior Month(s) Charges			
Gas		Duke Energy	
Meter -	000437268	Rate FTRT - Res Transportation	
CCF Usage -	35	Customer Charge	\$ 6.00
Apr 17 - May 19		Gas Delivery Charge	
32 Days		35CCF @ \$ 0.18591000	6.51
		Gas Delivery Riders	7.95
		Applicable Surcharge	
		35CCF @ \$ 0.00270000	0.09
			\$ 20.55
Meter - *	000937630		
CCF Usage -	0		
May 19 - May 19		IGSenergy: Interstate Gas	
0 Days		Rate IS05 - IGSenergy: Interstate Gas	
* Meter Change		Gas Supplier Energy Chg	
		35CCF @ \$ 1.08800000	\$ 38.08
			38.08
Gas		Duke Energy	
Meter -	000437268	Rate FTRT - Res Transportation	
CCF Usage -	63	Customer Charge	\$ 6.00
Mar 18 - Apr 17		Gas Delivery Charge	
30 Days		63CCF @ \$ 0.18591000	11.71
		Gas Delivery Riders	9.22
		Applicable Surcharge	
		63CCF @ \$ 0.00270000	0.17
			\$ 27.10
		IGSenergy: Interstate Gas	
		Rate IS05 - IGSenergy: Interstate Gas	
		Gas Supplier Energy Chg	
		63CCF @ \$ 1.09900000	\$ 69.24
			69.24
Gas		Duke Energy	
Meter -	000437268	Rate FTRS - Res Transportation	
CCF Usage -	107	Customer Charge	\$ 6.00
Feb 19 - Mar 18		Gas Delivery Charge	
28 Days		107CCF @ \$ 0.18591000	19.89
		Gas Delivery Riders	11.23
		Applicable Surcharge	
		107CCF @ \$ 0.00270000	0.29
			\$ 37.41
		IGSenergy: Interstate Gas	
		Rate IS05 - Interstate Gas Rate	
		Gas Supplier Energy Chg	
		107CCF @ \$ 0.99900000	\$ 106.89
			106.89

299.27

Name		Service Address		Account Number	
Sharon Wilson		606 Fox Chase WY Maineville OH 45039		7190-2053-06-3	
Gas Meter - 000437268 CCF Usage - (130) Jan 18 - Feb 19 32 Days <i>2008</i>		Duke Energy Rate FTRS - Res Transportation Customer Charge \$ 6.00 Gas Delivery Charge 130CCF @ \$ 0.18591000 24.17 Gas Delivery Riders 12.28 Applicable Surcharge 130CCF @ \$ 0.00270000 0.35 IGSenergy: Interstate Gas Rate IS05 - Interstate Gas Rate Gas Supplier Energy Chg 130CCF @ \$ 0.99900000 \$ 129.87		\$ 42.80 129.87	
Gas Meter - 000437268 CCF Usage - (106) Dec 18 - Jan 18 31 Days <i>2007</i>		Duke Energy Rate FTRS - Res Transportation Customer Charge \$ 6.00 Gas Delivery Charge 106CCF @ \$ 0.18591000 19.71 Gas Delivery Riders 11.18 Applicable Surcharge 106CCF @ \$ 0.00270000 0.29 IGSenergy: Interstate Gas Rate IS05 - Interstate Gas Rate Gas Supplier Energy Chg 106CCF @ \$ 0.99900000 \$ 105.89		\$ 37.18 105.89	
Gas Meter - 000437268 CCF Usage - (108) Nov 14 - Dec 18 34 Days <i>2007</i>		Duke Energy Rate FTRS - Res Transportation Customer Charge \$ 6.00 Gas Delivery Charge 108CCF @ \$ 0.18591000 20.08 Gas Delivery Riders 11.28 Applicable Surcharge 108CCF @ \$ 0.00270000 0.29 IGSenergy: Interstate Gas Rate IS05 - Interstate Gas Rate Gas Supplier Energy Chg 108CCF @ \$ 0.99900000 \$ 107.89		\$ 37.65 107.89	
Gas Meter - 000437268 CCF Usage - (51) Oct 17 - Nov 14 28 Days <i>2007</i>		Duke Energy Rate FTRS - Res Transportation Customer Charge \$ 6.00 Gas Delivery Charge 51CCF @ \$ 0.18591000 9.48 Gas Delivery Riders 8.67 Applicable Surcharge 51CCF @ \$ 0.00300000 0.15 IGSenergy: Interstate Gas Rate IS05 - Interstate Gas Rate Gas Supplier Energy Chg 51CCF @ \$ 0.99900000 \$ 50.95		\$ 24.30 50.95	

Name		Service Address		Account Number	
Sharon Wilson		606 Fox Chase WY Maineville OH 45039		7190-2053-06-3	
Gas Meter -	000437268	Duke Energy			
CCF Usage -	17	Rate FTRS - Res Transportation			
Sep 18 - Oct 17		Customer Charge		\$ 6.00	
29 Days		Gas Delivery Charge			
		17CCF @ \$ 0.18591000		3.16	
		Gas Delivery Riders		7.11	
		Applicable Surcharge			
		17CCF @ \$ 0.00300000		0.05	\$ 16.32
		IGSenergy: Interstate Gas			
		Rate IS05 - Interstate Gas Rate			
		Gas Supplier Energy Chg			
		17CCF @ \$ 0.99900000		\$ 16.98	16.98
Gas Meter -	000437268	Duke Energy			
CCF Usage -	13	Rate FTRS - Res Transportation			
Aug 16 - Sep 18		Customer Charge		\$ 6.00	
33 Days		Gas Delivery Charge			
		13CCF @ \$ 0.18591000		2.42	
		Gas Delivery Riders		6.94	
		Applicable Surcharge			
		13CCF @ \$ 0.00300000		0.04	\$ 15.40
		IGSenergy: Interstate Gas			
		Rate IS05 - Interstate Gas Rate			
		Gas Supplier Energy Chg			
		13CCF @ \$ 0.99900000		\$ 12.99	12.99
Gas Meter -	000437268	Duke Energy			
CCF Usage -	10	Rate FTRS - Res Transportation			
Jul 18 - Aug 18		Customer Charge		\$ 6.00	
29 Days		Gas Delivery Charge			
		10CCF @ \$ 0.18591000		1.86	
		Gas Delivery Riders		6.80	
		Applicable Surcharge			
		10CCF @ \$ 0.00300000		0.03	\$ 14.69
		IGSenergy: Interstate Gas			
		Rate IS05 - Interstate Gas Rate			
		Gas Supplier Energy Chg			
		10CCF @ \$ 0.99900000		\$ 9.99	9.99
Gas Meter -	000437268	Duke Energy			
CCF Usage -	10	Rate FTRS - Res Transportation			
Jun 19 - Jul 18		Customer Charge		\$ 6.00	
29 Days		Gas Delivery Charge			
		10CCF @ \$ 0.18591000		1.86	
		Gas Delivery Riders		6.80	
		Applicable Surcharge			
		10CCF @ \$ 0.00300000		0.03	\$ 14.69
		IGSenergy: Interstate Gas			
		Rate IS05 - Interstate Gas Rate			
		Gas Supplier Energy Chg			
		10CCF @ \$ 0.87900000		\$ 8.79	8.79



17840120150010769302

Name		Service Address	Account Number
Sharon Wilson		606 Fox Chase WY Maineville OH 45039	7190-2053-06-3
Gas Meter -	000437268	Duke Energy	
CCF Usage -	14	Rate FTRS - Res Transportation	
May 18 - Jun 19		Customer Charge	\$ 6.00
32 Days		Gas Delivery Charge	
		14CCF @ \$ 0.18591000	2.60
		Gas Delivery Riders	6.95
		Applicable Surcharge	
		14CCF @ \$ 0.00300000	0.04
			\$ 15.59
		IGSenergy: Interstate Gas	
		Rate IS05 - Interstate Gas Rate	
		Gas Supplier Energy Chg	
		14CCF @ \$ 0.87900000	\$ 12.31
			12.31
		Total Prior Gas Charges	\$ 973.55

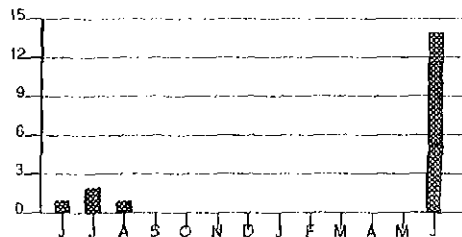
Explanation of Taxes		
Taxes	Warren County Sales Tax	\$ 44.53
	Total Taxes	\$ 44.53

CCF

Gas Usage

kWh

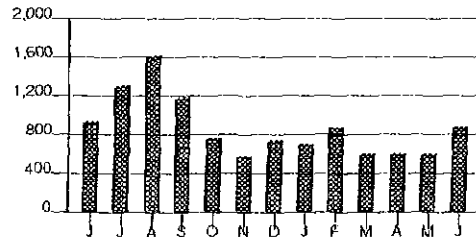
Electric Usage



Calculations based on most recent 12 month history

Any prior months adjusted usage on this bill, will display in your historical usage graph and chart on your next bill.

Total Usage 17
Average Usage 1



Calculations based on most recent 12 month history

Any prior months adjusted usage on this bill, will display in your historical usage graph and chart on your next bill.

Total Usage 10,587
Average Usage 887

	JUN	JUL	AUG	SEP	OCT	NOV	DEC	JAN	FEB	MAR	APR	MAY	JUN
Gas	1	2	1	0	0	0	0	0	0	0	0	0	14
Electric	955	1,303	1,626	1,197	773	599	759	713	899	610	612	609	887

IGS rate when signed up 3/19/2007 2/8/07

• gas . 879 (rate not guaranteed variable)

— method to determine usage based on review of your usage patterns before? & after installation of new gas meter (installed 5/19/08)



17840120150010760304

DISCONNECT NOTICE

PLEASE RETURN THE TOP PORTION WITH YOUR PAYMENT. ↑

Page 1 of 3

Name /Service Address	For Inquiries Call	Account Number
-----------------------	--------------------	----------------

 Sharon Wilson
 606 Fox Chase WY
 Maineville OH 45039

Duke Energy 513-651-5100
 1-800-648-7777
 IGSenergy: Interstate Gas 1-877-444-7427

7190-2053-06-3

Mail Payments To	Account Information
------------------	---------------------

 PO Box 9001084
 Louisville KY 40290-1084

Payments after May 22 not included

 Bill prepared on May 22, 2008
 Next meter reading Jun 17, 2008

IMPORTANT- Your service may be disconnected if your past due amount of \$135.99 is not paid before 06/13/2008. A reconnection charge will be required. For questions, please call the number shown above.

If your service is disconnected for non payment, in addition to a reconnection charge, you will be required to pay an additional deposit in the amount of \$79.00 before service is restored.

2 different
meters

Meter	Number	Reading Date		Days	Meter Reading		Usage
		From	To		Previous	Present	
Gas	000437268	Apr 17	May 19	32	1453	1453	0
Gas	000937630*	May 19	May 19	0	00000	00000	0
Elec	095463367	Apr 17	May 19	32	41583	42192	609

* New Meter

Gas - Residential	
Usage -	0 CCF
Duke Energy - Rate FTRT	\$ 12.34
IGSenergy: - Rate IS05	
Interstate Gas	0.00
Current Gas Charges	\$ 12.34

Current Billing	
Amt Due - Previous Bill	\$ 128.72
Late Payment Charge(s)	1.93
Balance Forward	130.65
Current Gas Charges	12.34
Current Electric Charges	70.05
Agmt #2699041 Ending Bal	89.99
Current Amount Due	\$ 303.03

Electric - Residential	
Usage -	609 kWh
Duke Energy - Rate RS	\$ 70.05
Current Electric Charges	\$ 70.05

Paid 218.71 5/28/08

Pd 84.32 6/29/08

DISCONNECT NOTICE

Due Date	Amount Due	After Jun 13, 2008
Jun 13, 2008	\$ 303.03	\$ 307.58


 visit us at www.duke-energy.com

EXPLANATION OF BILL LANGUAGE

(The following terms will not appear on every bill)

CCF	Gas usage, measured in hundreds of cubic feet.	Gas Delivery Riders	Charges to recover various costs associated with Duke Energy's gas operations and to fund Ohio energy-related programs.
CR	Credited amount.	Generation Charges	Charges associated with the production of electricity.
Current Charges (Gas and Electric)	Total of all charges based on usage during the current billing period for gas and electric services.	Generation Riders (Electric)	Charges to recover certain costs related to the production of electricity.
Customer Charge	The fixed monthly basic distribution charge to partially cover costs for billing, meter reading, service line maintenance, and equipment.	Kilowatt-hour (kWh)	The unit of measure for the electricity you use. For example, you use one kWh of electricity to light a 100 watt light bulb for 10 hours.
Delivery Charges (Electric & Gas)	Charges for the operating expenses of delivering energy.	Late Payment Charge	A 1.5% late charge is added to the overdue amount of the regulated portion of your bill if you do not pay by the bill due date.
Delivery Riders (Electric)	Charges to recover various costs associated with Duke Energy's electric operations and to fund Ohio energy-related programs.	Meter Multiplier	A factor that the meter reading usage is multiplied by in order to obtain the correct energy usage.
Distribution Charge	Charge for the use of local wires, transformers, substations, and other equipment used to deliver electricity to your home/business.	Rate	Code that identifies the gas delivery or electric distribution billing tariff used to calculate the bill.
Estimated (E) and Actual Readings	An actual reading is a reading we take from your meter. On the months we are unable to read your meter, we calculate your bill based on your past usage. Adjustments may be needed later, when we take an actual meter reading. If you would like to read your own meter to avoid estimated bills, please call us.	Rider ACC	Charges to recover changes in environmental compliance, homeland security and tax costs.
Gas Cost Information	The GAS COST RECOVERY (GCR) rate is the cost (per 100 cubic feet) of gas we purchase from our suppliers. This rate varies periodically as gas prices to us increase or decrease. Duke Energy makes no profit on this charge since it is based on the actual costs we pay our suppliers for the gas we purchase and resell. The GCR rate is approved by the Public Utilities Commission of Ohio.	Rider FPP	Charges to recover the cost of fuel and purchase power.
		Rider TCR	Charges to recover transmission costs assessed by the regional transmission organization.
		Supplier Charges	Charges from a Gas and / or Electric Supplier other than Duke Energy.
		Usage	Amount of energy used during the billing period.

BILLING OR SERVICE INQUIRES OR COMPLAINTS

If you have a question or complaint about your bill or service, call us at (513) 421-9500, or from a toll area call 1-800-544-6900. Persons who have a hearing impairment may call our TDD/TTY toll free number, 1-800-752-3254. You may also write to our Customer Services Department at P.O. Box 960, Mail Drop 308C, Cincinnati, 45201. In addition, you may contact us by fax at (513) 287-2376, or by e-mail at www.duke-energy.com.

If your complaint is not resolved after you have called Duke Energy Ohio, or for general utility information, residential and business consumers may contact the Public Utilities Commission of Ohio for assistance at 1-800-686-7826 (toll free) or for TTY at 1-800-686-1570 (toll free), from 8:00 a.m. to 5:00 p.m. weekdays, or at www.puco.ohio.gov.

Residential customers may also contact the Ohio Consumers Counsel for assistance with complaints and utility issues at 1-877-742-5622 (toll free) from 8:00 a.m. to 5:00 p.m. weekdays, or at www.pickccc.org.

To obtain information about competitive gas offers, visit www.puco.ohio.gov or call 1-800-299-7271.

BUSINESS HOURS

OFFICE HOURS:

Cincinnati - 8:00 a.m. - 5:00p.m. Monday - Friday

Newport - 8:00 a.m. - 5:00p.m. Monday - Friday

SERVICE EMERGENCY NUMBERS

Gas Trouble - (513) 651-4466 OR 1-800-634-4300

Electric Trouble - (513) 651-4182 OR 1-800-543-5599



visit us at www.duke-energy.com

Name	Service Address	Account Number
Sharon Wilson	606 Fox Chase WY Maineville OH 45039	7190-2053-06-3

In a recent ruling by the PUCO, Rider RSC is now included in your generation charges and is avoidable when you are served by an electric supplier. For nonresidential customers only, Rider IMF can be waived by switching to an electric supplier and agreeing not to return to Duke service until after December 31, 2008. These changes do not affect the amount of your bill.

PLEASE NOTE: Our records indicate that your previous bill was not paid in full. As a result, you have been removed from your agreement. The entire agreement balance is now due.

Before beginning any outdoor projects this spring, remember to consider safety first. Be aware of overhead power lines when using ladders or trimming trees and make sure you call 811 to have underground utility lines marked before digging. For more tips on electric and gas safety, visit www.duke-energy.com.

This month's Gas Cost Recovery (GCR) charge for customers purchasing their natural gas from Duke Energy is \$1.1421 per CCF, which includes a base GCR of \$1.0889 and Ohio excise tax of \$0.0532.

PRICE TO COMPARE: In order for an average residential customer to save money, an electric supplier must offer a price lower than 6.88 cents per kWh. Your Price to Compare may be different based on your usage. Visit www.duke-energy.com to calculate your individual Price to Compare or contact Duke Energy for a written explanation.

If no usage, why delivery charges

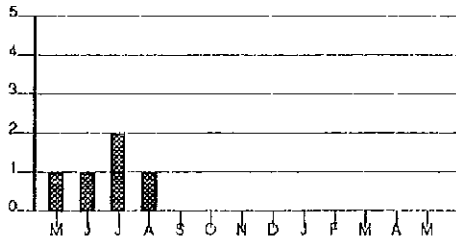
Explanation of Current Charges		
Gas		
Meter - 000437268	Duke Energy	
CCF Usage - 0	Rate FTRT - Res Transportation	
Apr 17 - May 19 32 Days	Customer Charge \$ 6.00	
	Gas Delivery Riders 6.34	\$ 12.34
Meter - * 000937630	IGSenergy: Interstate Gas	
CCF Usage - 0	Rate IS05 - IGSenergy: Interstate Gas	0.00
May 19 - May 19 0 Days		
* Meter Change		
Total Current Gas Charges		\$ 12.34
Electric		
Meter - 095463367	Duke Energy	
kWh Usage - 609	Rate RS - Residential Svc-Winter	
Apr 17 - May 19 32 Days	Distribution-Customer Chg \$ 4.50	
	Delivery Charges	
	Distribution-Energy Chg	
	609kWh @ \$ 0.01994900 12.15	
	Rider TCR 3.90	
	Delivery Riders 2.92	
	Total Delivery Charges \$ 18.97	
	Generation Charges	
	Generation Energy Chg	
	609kWh @ \$ 0.04418000 26.91	
	Rider FPP 7.43	
	Rider AAC 4.06	
	Generation Riders 8.18	
	Total Generation Charges \$ 46.58	70.05
Total Current Electric Charges		\$ 70.05

Agreement Information			
Summary		Previous Agreement Balance	\$ 89.99
Agreement Number - 2699041		Current Agreement Amount Due	\$ 89.99cr
Agreement Amount - \$ 275.89		Agreement Balance	\$ 0.00
Agreement Date - 02/11/08			
Number of Payments - 6			

Name	Service Address	Account Number
Sharon Wilson	606 Fox Chase WY Maineville OH 45039	7190-2053-06-3

CCF

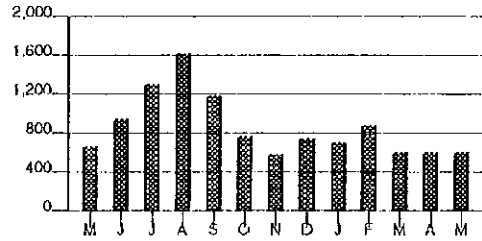
Gas Usage



Calculations based on most recent 12 month history
 Total Usage 4
 Average Usage 0

kWh

Electric Usage



Calculations based on most recent 12 month history
 Total Usage 10,655
 Average Usage 888

	MAY	JUN	JUL	AUG	SEP	OCT	NOV	DEC	JAN	FEB	MAR	APR	MAY
Gas	1	1	2	1	0	0	0	0	0	0	0	0	0
Electric	662	955	1,303	1,626	1,197	773	599	759	713	899	610	612	609



14440120010010223102