

EXCHANGE SERVICES TARIFF
PUCO NO. 1

CINCINNATI BELL TELEPHONE COMPANY LLC

Section 3
Original Page 1

LOCAL EXCHANGE SERVICES

A. GENERAL

The services offered in each exchange area, the local service area for each exchange and the particular Rate Bands applicable thereto are specified in Part C of this section applicable to such exchange area. The schedules of basic monthly rates, charges, and nonrecurring charges applicable within the various exchange areas for the services offered therein are shown in Parts D and E of this section.

Exchange access lines include the serving central office line equipment (including Touch Tone capability) and all outside plant facilities including the Company-provided and maintained network interface necessary to connect the serving central office to the customer's premises.

All Local Exchange Services include Touch Tone capability.

B. EXCHANGE CLASSIFICATION

1. General

For the purpose of determining exchange service monthly rates, exchanges are classified by Rate Bands.

The Local Service Area (LSA) is the geographical area within which customers may make calls without the payment of toll charges.

Areas in the LSA that are classified as Community Connection Calling Areas will be charged usage rates in accordance with Part G.4 in this section of the tariff. When a customer subscribes to Measured Service as described in Part F in this section, calls to Community Connection Calling Areas will be rated at the appropriate Community Connection usage rates and measured service usage rates will not apply. Flat Rate Service customers placing calls to Community Connection Calling Areas will be charged the appropriate usage rates associated with such calls in addition to their normal flat rated monthly service charges.

Issued: June 12, 2008

By: D. Scott Ringo, Jr., Assistant Secretary – Regulatory Affairs
Cincinnati, Ohio

Effective: June 12, 2008

In accordance with Case No.
08-368-TP-ATA, Issued by the
Public Utilities Commission of Ohio
March 28, 2008

EXCHANGE SERVICES TARIFF
PUCO NO. 1

CINCINNATI BELL TELEPHONE COMPANY LLC

Section 3
Original Page 2

LOCAL EXCHANGE SERVICES

B. EXCHANGE CLASSIFICATION (Continued)

2. List of Exchanges and Rate Bands

<u>Exchange</u>	<u>Rate Band</u>
Bethany	2
Bethel	3
Cincinnati	
Customers served out of all central offices within the exchange except Miami or Sayler Park	1
Customers served out of the Miami or Sayler Park central offices	2
Clermont	
Customers served out of the Cherry Grove central office	1
Customers served out of the Batavia, Hamlet or Tobasco central offices	2
Customers served out of the New Richmond central office	3
Hamilton	
Customers served out of the Crescentville or Fairfield central offices	1
Customers served out of the Hamilton central office	2
Harrison	2
Little Miami	2
Newtownsville	3
Reily	3
Seven Mile	3
Shandon	3
Williamsburg	3

Issued: June 12, 2008

By: D. Scott Ringo, Jr., Assistant Secretary – Regulatory Affairs
Cincinnati, Ohio

Effective: June 12, 2008
In accordance with Case No.
08-368-TP-ATA, Issued by the
Public Utilities Commission of Ohio
March 28, 2008

EXCHANGE SERVICES TARIFF
PUCO NO. 1

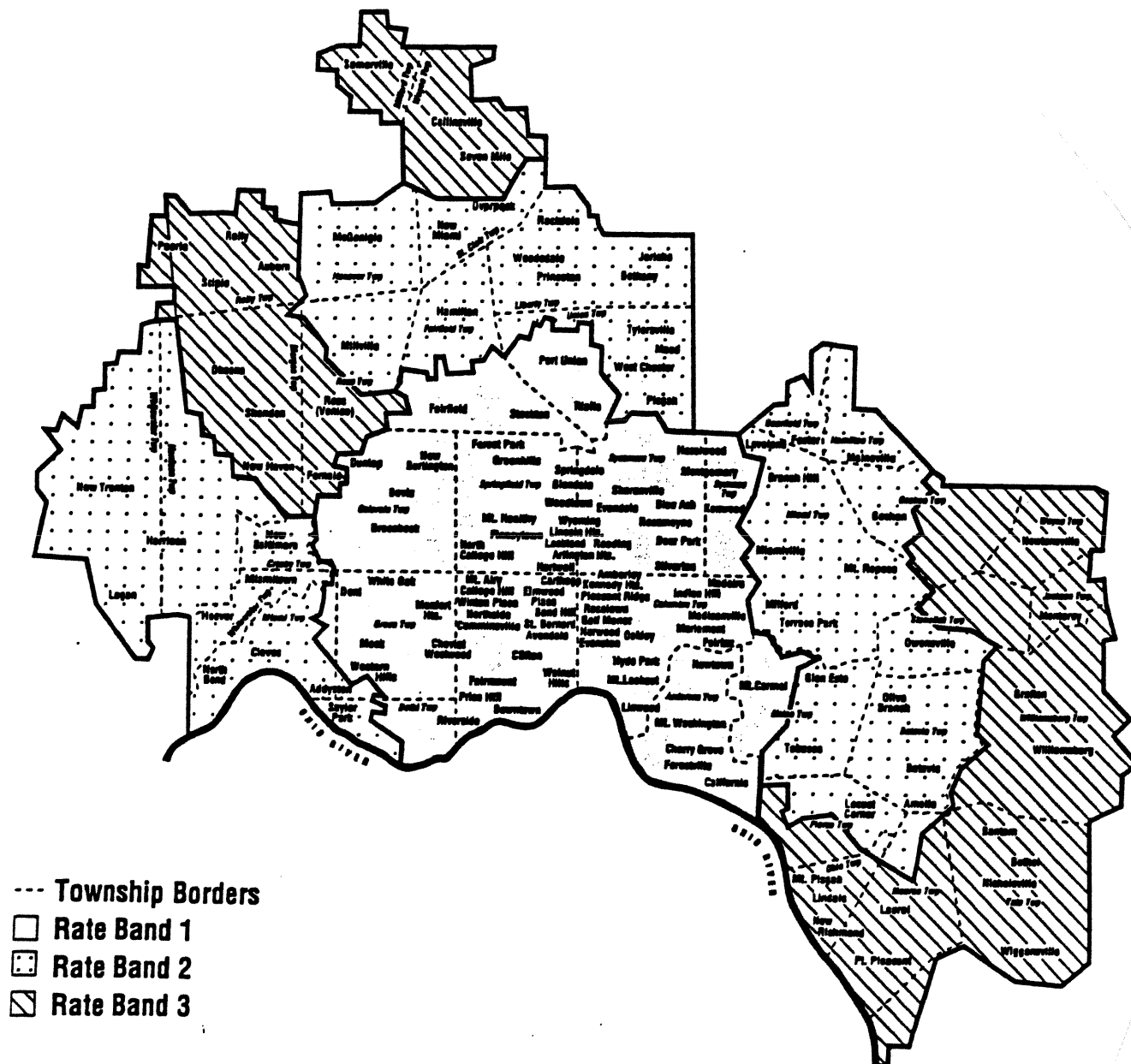
CINCINNATI BELL TELEPHONE COMPANY LLC

Section 3
Original Page 3

LOCAL EXCHANGE SERVICES

B. EXCHANGE CLASSIFICATION (Continued)

3. Rate Band Map



Issued: June 12, 2008

By: D. Scott Ringo, Jr., Assistant Secretary – Regulatory Affairs
Cincinnati, Ohio

Effective: June 12, 2008
In accordance with Case No.
08-368-TP-ATA, Issued by the
Public Utilities Commission of Ohio
March 28, 2008

EXCHANGE SERVICES TARIFF
PUCO NO. 1

CINCINNATI BELL TELEPHONE COMPANY LLC

Section 3
Original Page 4

LOCAL EXCHANGE SERVICES

B. EXCHANGE CLASSIFICATION (Continued)

4. Cincinnati Metropolitan Area Exchange Area

The exchange areas included in the Cincinnati Metropolitan Area Exchange Area are as follows:

Ohio Exchanges

Bethany
Bethel
Cincinnati
Clermont
Hamilton
Harrison (Note 1)
Little Miami
Newtownsville
Reily (Note 1)
Seven Mile
Shandon
Williamsburg

Kentucky Exchanges

Alexandria
Boone
Butler
Falmouth
Glencoe
Independence
Kentucky Metropolitan
Walton
Warsaw
Williamstown

Note 1: Includes the customers in the Indiana portion of this exchange.

Issued: June 12, 2008

By: D. Scott Ringo, Jr., Assistant Secretary – Regulatory Affairs
Cincinnati, Ohio

Effective: June 12, 2008
In accordance with Case No.
08-368-TP-ATA, Issued by the
Public Utilities Commission of Ohio
March 28, 2008

EXCHANGE SERVICES TARIFF
PUCO NO. 1

CINCINNATI BELL TELEPHONE COMPANY LLC

Section 3
Original Page 5

LOCAL EXCHANGE SERVICES

C. EXCHANGE AREAS

1. Bethany Exchange

a. Local Service Area

1. Basic Local Calling Area

All exchanges in the Cincinnati Metropolitan Area Exchange Area as specified in Part B.4 of this section of the tariff and Embarq's Mason exchange.

2. Community Connection Service Area

None

b. Basic Monthly Exchange Services

See schedule of rates for Rate Band 2 in Part D of this section.

c. Additional Telecommunication Services

All services offered by the Company in its tariffs will be provided where technically feasible and provisions are in place to provide such services.

Issued: June 12, 2008

By: D. Scott Ringo, Jr., Assistant Secretary – Regulatory Affairs
Cincinnati, Ohio

Effective: June 12, 2008

In accordance with Case No.
08-368-TP-ATA, Issued by the
Public Utilities Commission of Ohio
March 28, 2008

EXCHANGE SERVICES TARIFF
PUCO NO. 1

CINCINNATI BELL TELEPHONE COMPANY LLC

Section 3
Original Page 7

LOCAL EXCHANGE SERVICES

C. EXCHANGE AREAS (Continued)

2. Bethel Exchange

a. Local Service Area

1. Basic Local Calling Area

All exchanges in the Cincinnati Metropolitan Area Exchange Area as specified in Part B.4 of this section of the tariff, Verizon North, Incorporated's Felicity and Hamersville exchanges, and Embarq's Mason exchange.

2. Community Connection Service Area

None

b. Basic Monthly Exchange Services

See schedule of rates for Rate Band 3 in Part D of this section.

c. Additional Telecommunication Services

All services offered by the Company in its tariffs will be provided where technically feasible and provisions are in place to provide such services.

EXCHANGE SERVICES TARIFF
PUCO NO. 1

CINCINNATI BELL TELEPHONE COMPANY LLC

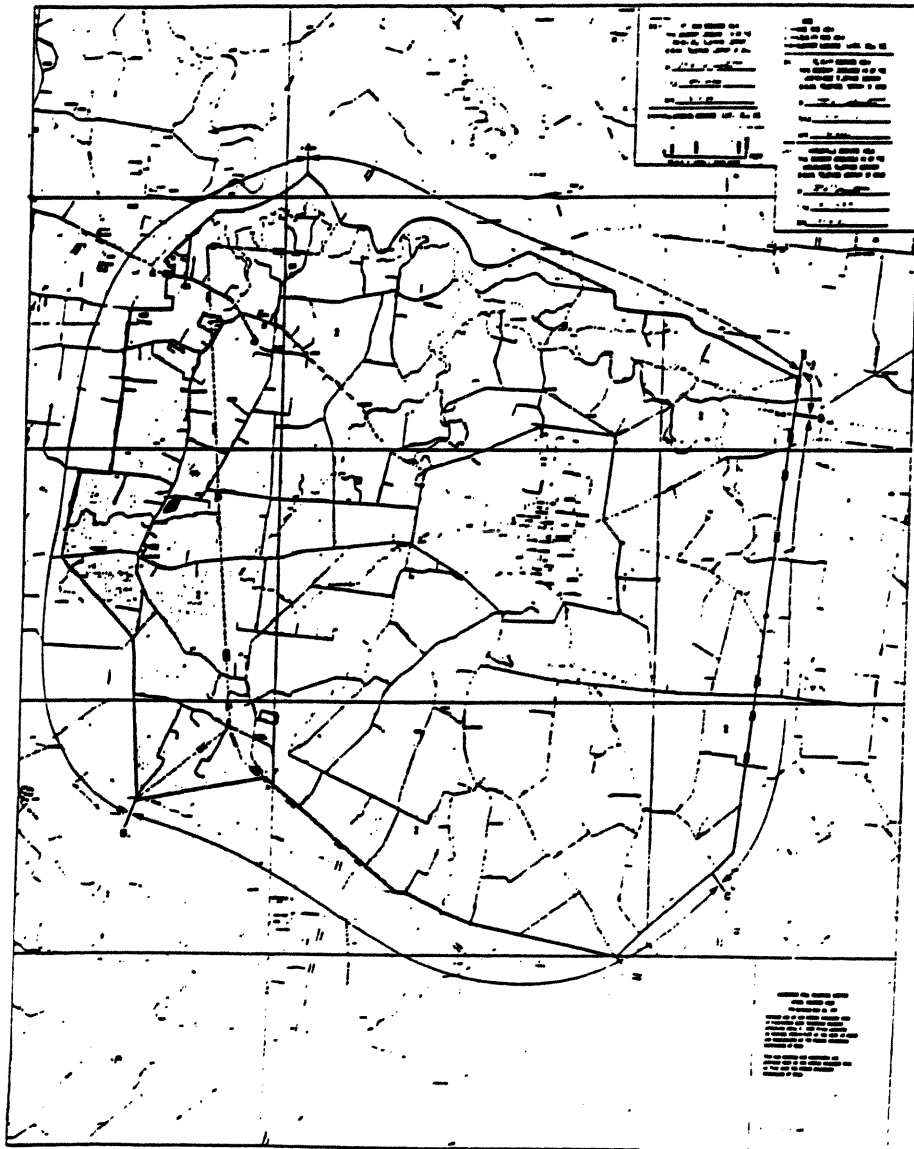
Section 3
Original Page 8

LOCAL EXCHANGE SERVICES

C. EXCHANGE AREAS (Continued)

2. Bethel Exchange (Continued)

d. Bethel Exchange Area Map



Issued: June 12, 2008

By: D. Scott Ringo, Jr., Assistant Secretary – Regulatory Affairs
Cincinnati, Ohio

Effective: June 12, 2008
In accordance with Case No.
08-368-TP-ATA, Issued by the
Public Utilities Commission of Ohio
March 28, 2008

EXCHANGE SERVICES TARIFF
PUCO NO. 1

CINCINNATI BELL TELEPHONE COMPANY LLC

Section 3
Original Page 9

LOCAL EXCHANGE SERVICES

C. EXCHANGE AREAS (Continued)

3. Cincinnati Exchange

a. Local Service Area

1. Basic Local Calling Area

All exchanges in the Cincinnati Metropolitan Area Exchange Area as specified in Part B.4 of this section of the tariff, Little Miami Communications Corporation's Butlerville and Fayetteville exchanges, Verizon North, Incorporated's Felicity, Hamersville, Mt. Orab, Higginsport, and Oxford exchanges, and Embarq's Mason and South Lebanon exchanges, and the AT&T Ohio's Monroe and Trenton Exchanges.

2. Community Connection Service Calling Area

The Lebanon and Morrow exchanges of Embarq.

The Blanchester and the Sardinia Exchanges of Verizon North, Incorporated.

b. Basic Monthly Exchange Services

See schedule of rates for Rate Band 1 in Part D of this section for customers served out of any central office in the exchange other than Miami or Sayler Park.

See schedule of rates for Rate Band 2 in Part D of this section for customers served out of the Miami or Sayler Park central offices.

Community Connection Service usage rates in Part G of this section apply in addition to the basic monthly exchange services.

c. Additional Telecommunications Service

All services offered by the Company in its tariffs will be provided where technically feasible and provisions are in place to provide such Services.

EXCHANGE SERVICES TARIFF
PUCO NO. 1

CINCINNATI BELL TELEPHONE COMPANY LLC

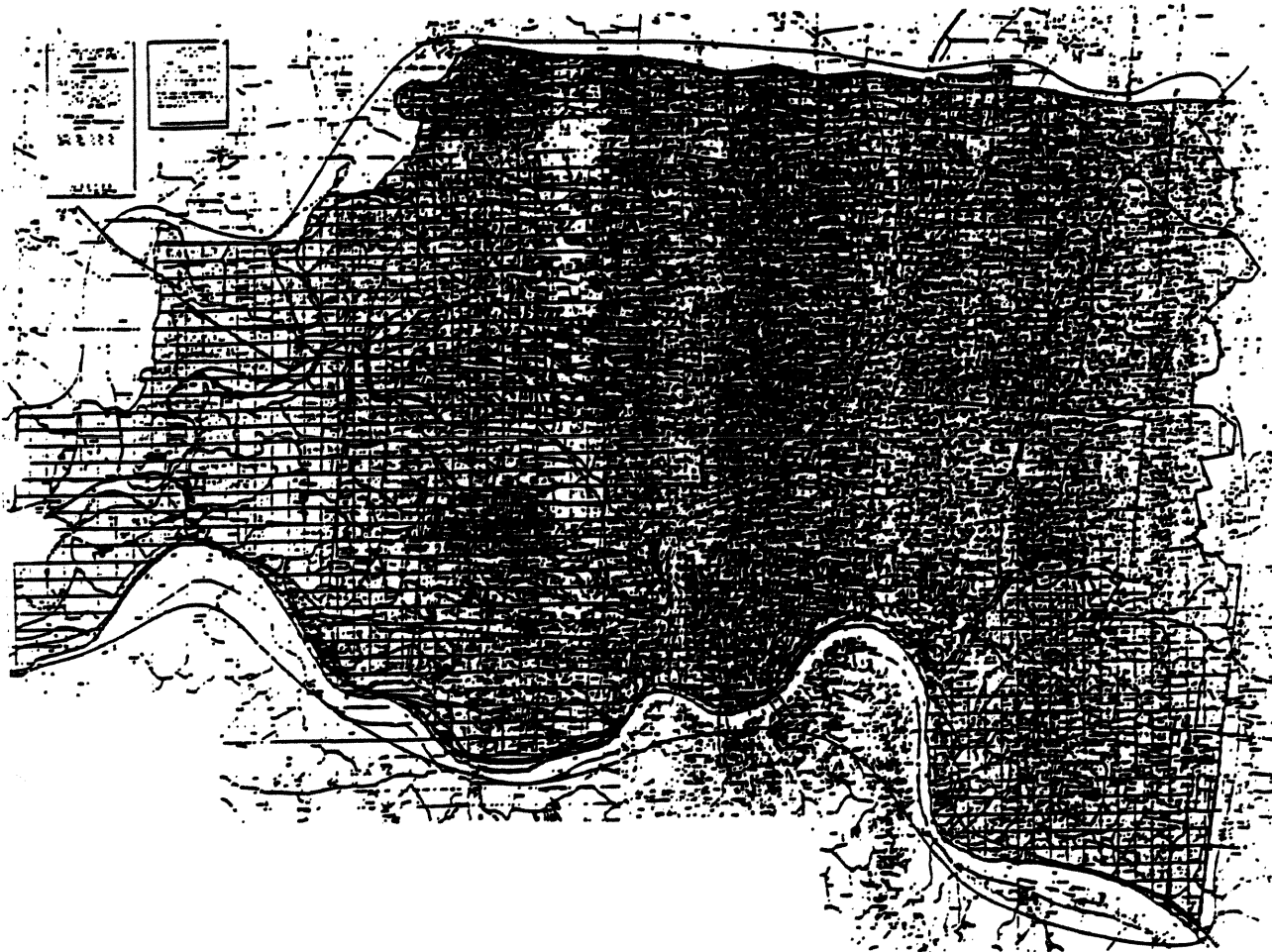
Section 3
Original Page 10

LOCAL EXCHANGE SERVICES

C. EXCHANGE AREAS (Continued)

3. Cincinnati Exchange (Continued)

d. Cincinnati Exchange Area Map



Issued: June 12, 2008

By: D. Scott Ringo, Jr., Assistant Secretary – Regulatory Affairs
Cincinnati, Ohio

Effective: June 12, 2008
In accordance with Case No.
08-368-TP-ATA, Issued by the
Public Utilities Commission of Ohio
March 28, 2008

EXCHANGE SERVICES TARIFF
PUCO NO. 1

CINCINNATI BELL TELEPHONE COMPANY LLC

Section 3
Original Page 11

LOCAL EXCHANGE SERVICES

C. EXCHANGE AREAS (Continued)

4. Clermont Exchange

a. Local Service Area

1. Basic Local Calling Area

All exchanges in the Cincinnati Metropolitan Area Exchange Area as specified in Part B.4 of this section of the tariff, Verizon North, Incorporated's Felicity, Hamersville, Mt. Orab and Higginsport exchanges, and Embarq's Mason exchange.

2. Community Connection Service Calling Area

The Fayetteville Exchange of the Little Miami Communications Corporation.

The Sardinia Exchange of Verizon North, Incorporated.

b. Basic monthly Exchange Services

See schedule of rates for Rate Band 1 in Part D of this section for customers served out of the Cherry Grove central office.

See schedule of rates for Rate Band 2 in Part D of this section for customers served out of the Batavia, Hamlet or Tobasco central offices.

See schedule of rates for Rate Band 3 in Part D of this section for customers served out of the New Richmond central office.

Community Connection Service usage rates in Part G of this section apply in addition to the basic monthly exchange services.

c. Additional Telecommunications Service

All services offered by the Company in its tariffs will be provided where technically feasible and provisions are in place to provide such services.

Issued: June 12, 2008

By: D. Scott Ringo, Jr., Assistant Secretary – Regulatory Affairs
Cincinnati, Ohio

Effective: June 12, 2008

In accordance with Case No.
08-368-TP-ATA, Issued by the
Public Utilities Commission of Ohio
March 28, 2008

EXCHANGE SERVICES TARIFF
PUCO NO. 1

CINCINNATI BELL TELEPHONE COMPANY LLC

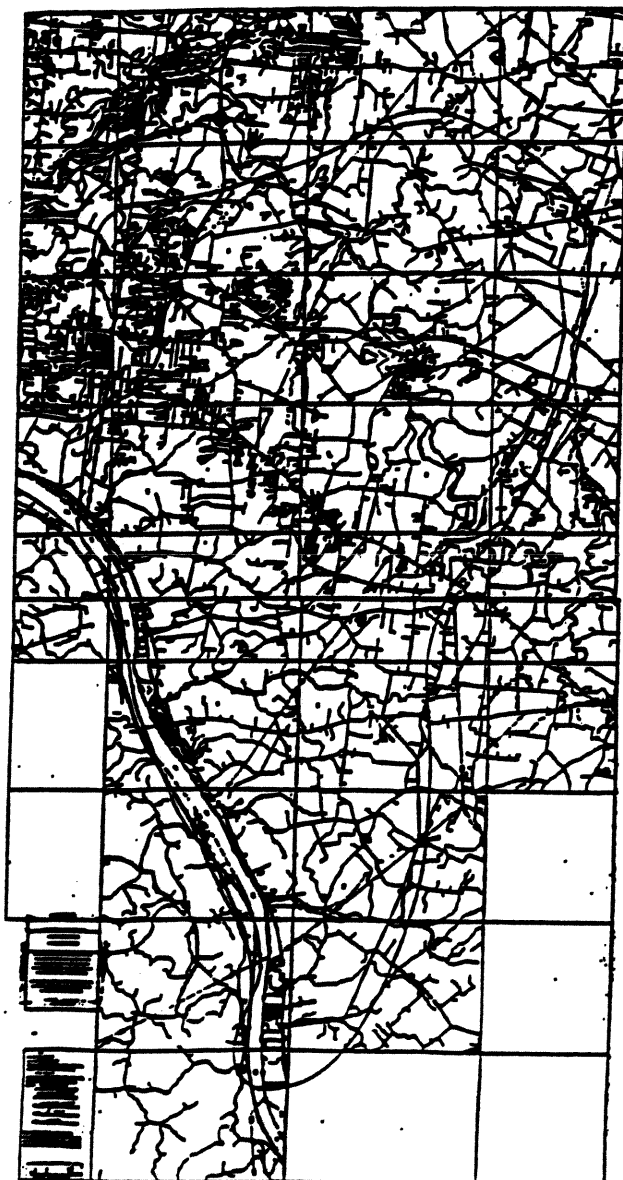
Section 3
Original Page 12

LOCAL EXCHANGE SERVICES

C. EXCHANGE AREAS (Continued)

4. Clermont Exchange (Continued)

d. Clermont Exchange Area Map



Issued: June 12, 2008

By: D. Scott Ringo, Jr., Assistant Secretary – Regulatory Affairs
Cincinnati, Ohio

Effective: June 12, 2008
In accordance with Case No.
08-368-TP-ATA, Issued by the
Public Utilities Commission of Ohio
March 28, 2008

EXCHANGE SERVICES TARIFF
PUCO NO. 1

CINCINNATI BELL TELEPHONE COMPANY LLC

Section 3
Original Page 13

LOCAL EXCHANGE SERVICES

C. EXCHANGE AREAS (Continued)

5. Hamilton Exchange

a. Local Service Area

1. Basic Local Calling Area

All exchanges in the Cincinnati Metropolitan Area Exchange Area as specified in Part B.4 of this section of the tariff, Embarq's Mason exchange, and the Verizon North, Incorporated's Morning Sun and Oxford Exchanges, and the AT&T Ohio's Monroe and Trenton Exchanges.

2. Community Connection Service Calling Area

None

b. Basic Monthly Exchange Services

See schedule of rates for Rate Band 1 in Part D of this section for customers served out of the Fairfield or Crescentville central offices.

See schedule of rates for Rate Band 2 in Part D of this section for customers served out of the Hamilton central office.

c. Additional Telecommunications Service

All services offered by the Company in its tariffs will be provided where technically feasible and provisions are in place to provide such services.

CINCINNATI BELL TELEPHONE COMPANY LLC

LOCAL EXCHANGE SERVICES

5. Hamilton Exchange (Continued)

Effective: June 12, 2008
In accordance with Case No.
08-368-TP-ATA, Issued by the
Public Utilities Commission of Ohio
March 28, 2008

EXCHANGE SERVICES TARIFF
PUCO NO. 1

CINCINNATI BELL TELEPHONE COMPANY LLC

Section 3
Original Page 15

LOCAL EXCHANGE SERVICES

C. EXCHANGE AREAS (Continued)

6. Harrison Exchange

a. Local Service Area

1. Basic Local Calling Area

All exchanges in the Cincinnati Metropolitan Area Exchange Area as specified in Part B.4 of this section of the tariff, and Embarq's Mason exchange.

2. Community Connection Service Calling Area

None

b. Basic Monthly Exchange Services

See schedule of rates for Rate Band 2 in Part D of this section.

c. Additional Telecommunications Service

All services offered by the Company in its tariffs will be provided where technically feasible and provisions are in place to provide such services.

Issued: June 12, 2008

By: D. Scott Ringo, Jr., Assistant Secretary – Regulatory Affairs
Cincinnati, Ohio

Effective: June 12, 2008

In accordance with Case No.
08-368-TP-ATA, Issued by the
Public Utilities Commission of Ohio
March 28, 2008

EXCHANGE SERVICES TARIFF
PUCO NO. 1

CINCINNATI BELL TELEPHONE COMPANY LLC

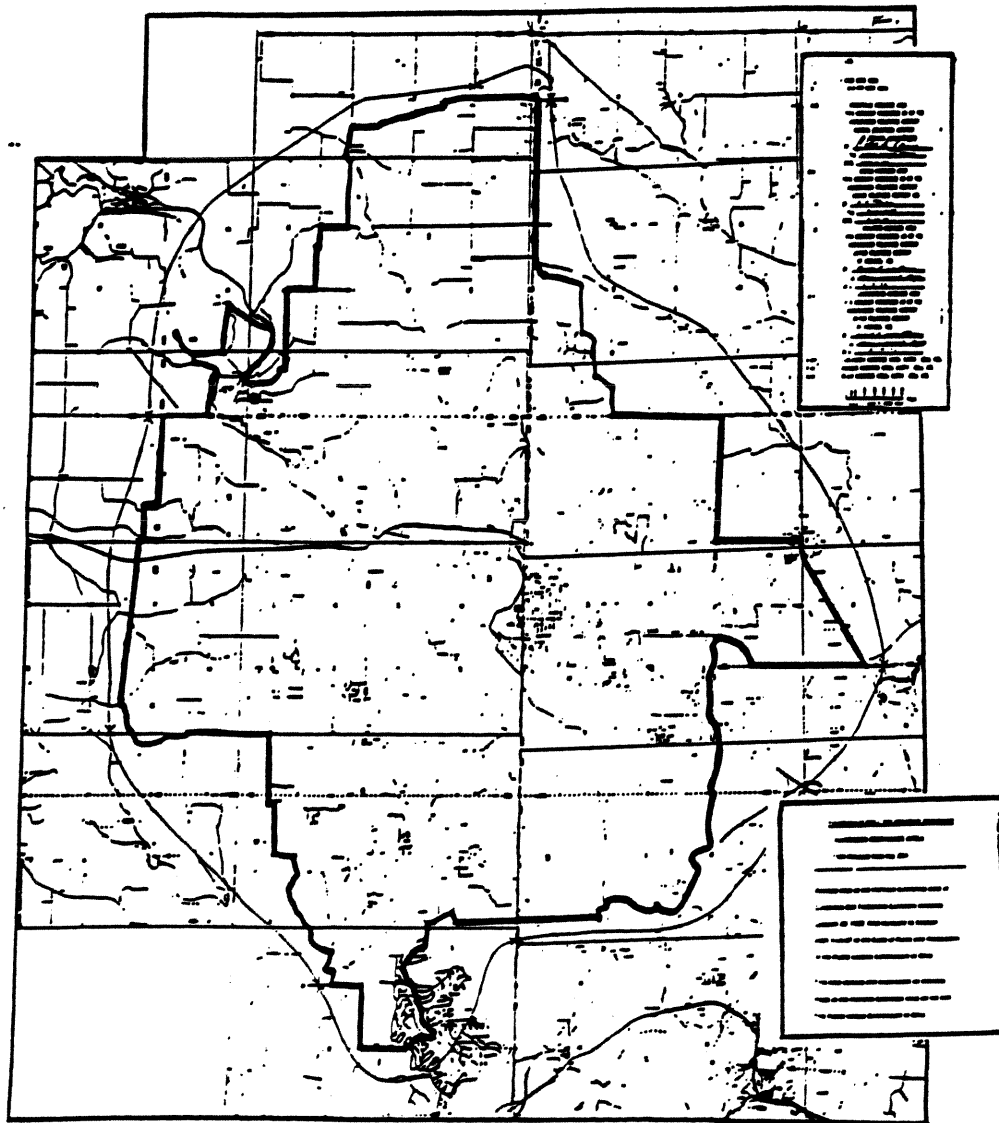
Section 3
Original Page 16

LOCAL EXCHANGE SERVICES

C. EXCHANGE AREAS (Continued)

6. Harrison Exchange (Continued)

d. Harrison Exchange Area Map



Issued: June 12, 2008

By: D. Scott Ringo, Jr., Assistant Secretary – Regulatory Affairs
Cincinnati, Ohio

Effective: June 12, 2008
In accordance with Case No.
08-368-TP-ATA, Issued by the
Public Utilities Commission of Ohio
March 28, 2008

EXCHANGE SERVICES TARIFF
PUCO NO. 1

CINCINNATI BELL TELEPHONE COMPANY LLC

Section 3
Original Page 17

LOCAL EXCHANGE SERVICES

C. EXCHANGE AREAS (Continued)

7. Little Miami Exchange

a. Local Service Area

1. Basic Local Calling Area

All exchanges in the Cincinnati Metropolitan Area Exchange Area as specified in Part B.4 of this section of the tariff and Embarq's Mason and South Lebanon exchanges.

2. Community Connection Service Calling Area

The Morrow exchange of Embarq
The Fayetteville exchange of Little Miami Communications Corporation.
The Blanchester Exchange of Verizon North, Incorporated.

b. Basic monthly Exchange Services

See schedule of rates for Rate Band 2 in Part D of this section.

Community Connection Service usage rates in Part G of this section apply in addition to the basic monthly exchange services.

c. Additional Telecommunications Service

All services offered by the Company in its tariffs will be provided where technically feasible and provisions are in place to provide such services.

EXCHANGE SERVICES TARIFF
PUCO NO. 1

CINCINNATI BELL TELEPHONE COMPANY LLC

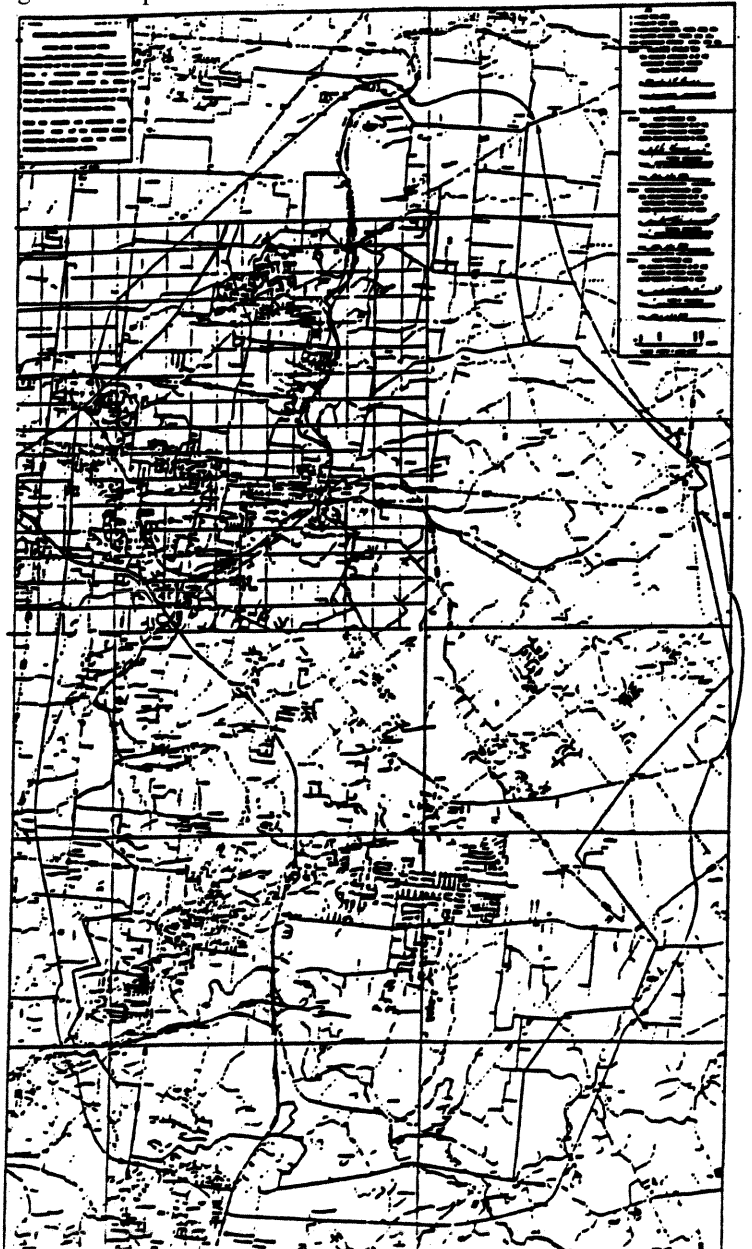
Section 3
Original Page 18

LOCAL EXCHANGE SERVICES

C. EXCHANGE AREAS (Continued)

7. Little Miami Exchange (Continued)

d. Little Miami Exchange Area Map



Issued: June 12, 2008

By: D. Scott Ringo, Jr., Assistant Secretary – Regulatory Affairs
Cincinnati, Ohio

Effective: June 12, 2008
In accordance with Case No.
08-368-TP-ATA, Issued by the
Public Utilities Commission of Ohio
March 28, 2008

EXCHANGE SERVICES TARIFF
PUCO NO. 1

CINCINNATI BELL TELEPHONE COMPANY LLC

Section 3
Original Page 19

LOCAL EXCHANGE SERVICES

C. EXCHANGE AREAS (Continued)

8. Newtonsville Exchange

a. Local Service Area

1. Basic Local Calling Area

All exchanges in the Cincinnati Metropolitan Area Exchange Area as specified in Part B.4 of this section of the tariff and Embarq's Mason exchange.

2. Community Connection Service Calling Area

The Fayetteville exchange of Little Miami Communications Corporation.

b. Basic Monthly Exchange Services

See schedule of rates for Rate Band 3 in Part D of this section.

Community Connection Service usage rates in Part G of this section apply in addition to the basic monthly exchange services.

c. Additional Telecommunications Service:

All services offered by the Company in its tariffs will be provided where technically feasible and provisions are in place to provide such services.

Issued: June 12, 2008

By: D. Scott Ringo, Jr., Assistant Secretary – Regulatory Affairs
Cincinnati, Ohio

Effective: June 12, 2008
In accordance with Case No.
08-368-TP-ATA, Issued by the
Public Utilities Commission of Ohio
March 28, 2008

EXCHANGE SERVICES TARIFF
PUCO NO. 1

CINCINNATI BELL TELEPHONE COMPANY LLC

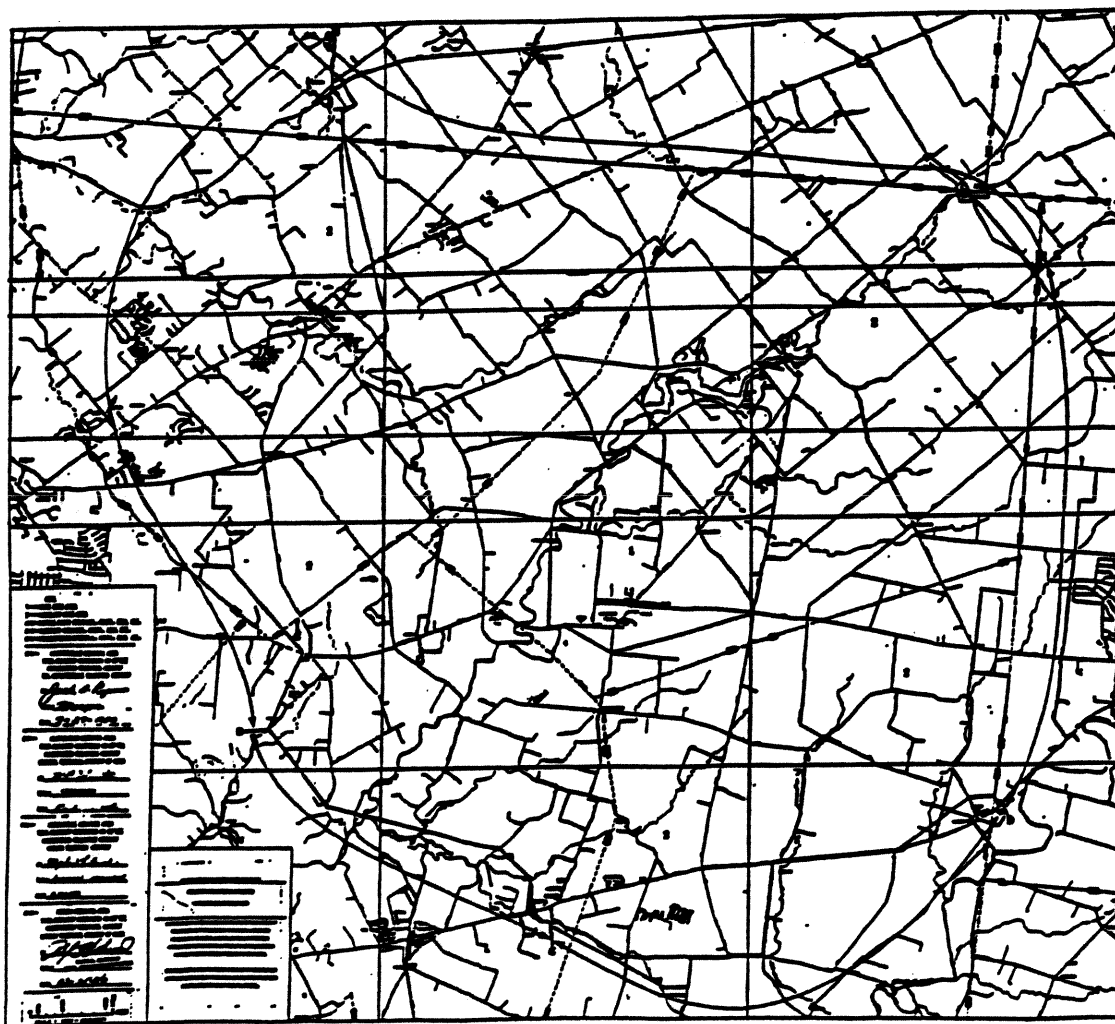
Section 3
Original Page 20

LOCAL EXCHANGE SERVICES

C. EXCHANGE AREAS (Continued)

8. Newtonsville Exchange (Continued)

d. Newtonsville Exchange Area Map



Issued: June 12, 2008

By: D. Scott Ringo, Jr., Assistant Secretary – Regulatory Affairs
Cincinnati, Ohio

Effective: June 12, 2008
In accordance with Case No.
08-368-TP-ATA, Issued by the
Public Utilities Commission of Ohio
March 28, 2008

EXCHANGE SERVICES TARIFF
PUCO NO. 1

CINCINNATI BELL TELEPHONE COMPANY LLC

Section 3
Original Page 21

LOCAL EXCHANGE SERVICES

C. EXCHANGE AREAS (Continued)

9. Reily Exchange

a. Local Service Area

1. Basic Local Calling Area

All exchanges in the Cincinnati Metropolitan Area Exchange Area as specified in Part B.4 of this section of the tariff and Embarq's Mason exchange.

2. Community Connection Service Calling Area

The Oxford exchange of Verizon North, Incorporated.

b. Basic Monthly Exchange Services

See schedule of rates for Rate Band 3 in Part D of this section.

Community Connection Service usage rates in Part G of this section apply in addition to the basic monthly exchange services.

c. Additional Telecommunications Service

All services offered by the Company in its tariffs will be provided where technically feasible and provisions are in place to provide such services.

Issued: June 12, 2008

By: D. Scott Ringo, Jr., Assistant Secretary – Regulatory Affairs
Cincinnati, Ohio

Effective: June 12, 2008
In accordance with Case No.
08-368-TP-ATA, Issued by the
Public Utilities Commission of Ohio
March 28, 2008

EXCHANGE SERVICES TARIFF
PUCO NO. 1

CINCINNATI BELL TELEPHONE COMPANY LLC

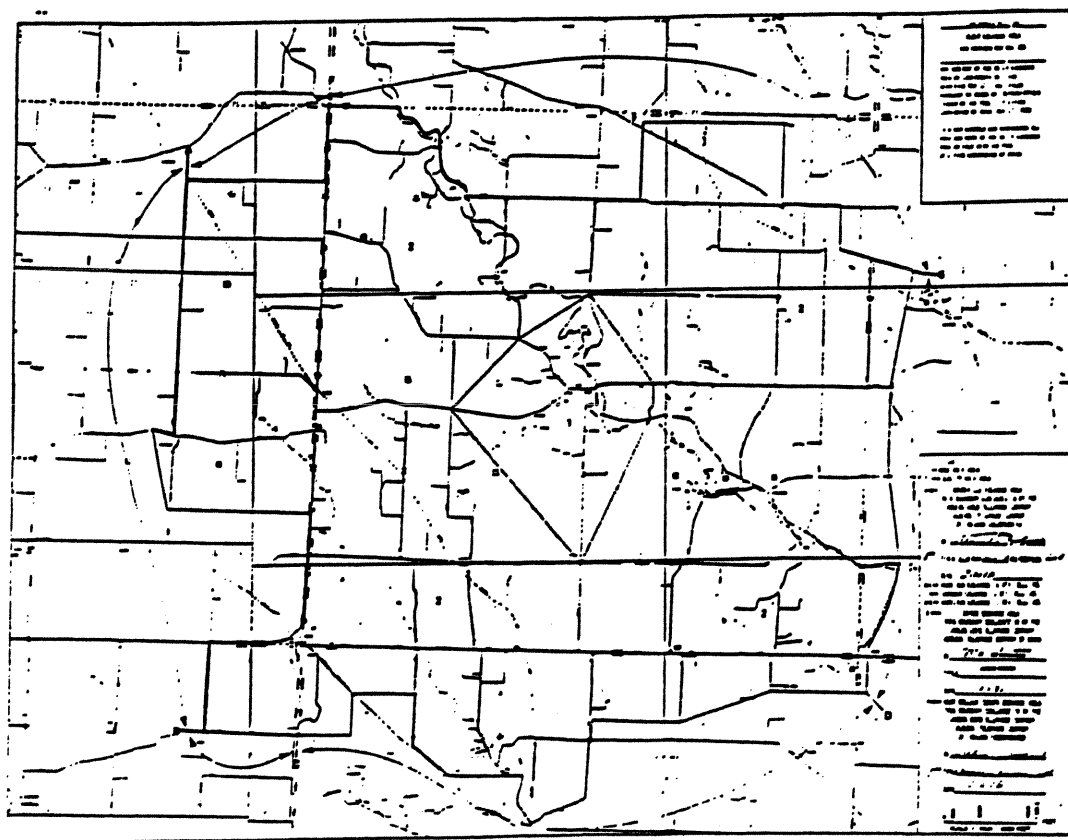
Section 3
Original Page 22

LOCAL EXCHANGE SERVICES

C. EXCHANGE AREAS (Continued)

9. Reily Exchange (Continued)

d. Reily Exchange Area Map



Issued: June 12, 2008

By: D. Scott Ringo, Jr., Assistant Secretary – Regulatory Affairs
Cincinnati, Ohio

Effective: June 12, 2008
In accordance with Case No.
08-368-TP-ATA, Issued by the
Public Utilities Commission of Ohio
March 28, 2008

EXCHANGE SERVICES TARIFF
PUCO NO. 1

CINCINNATI BELL TELEPHONE COMPANY LLC

Section 3
Original Page 23

LOCAL EXCHANGE SERVICES

C. EXCHANGE AREAS (Continued)

10. Seven Mile Exchange

a. Local Service Area

1. Basic Local Calling Area

All exchanges in the Cincinnati Metropolitan Area Exchange Area, as specified in Part B.4 of this section of the tariff and AT&T Ohio's Middletown and Trenton exchanges. (See Note 1)

2. Community Connection Service Calling Area

The Oxford Exchange of Verizon North, Incorporated.

b. Basic monthly Exchange Services

See schedule of rates for Rate Band 3 in Part D of this section.

Community Connection Service usage rates in Part G of this section apply in addition to the basic monthly exchange services.

c. Additional Telecommunications Service

All services offered by the Company in its tariffs will be provided where technically feasible and provisions are in place to provide such services.

Issued: June 12, 2008

By: D. Scott Ringo, Jr., Assistant Secretary – Regulatory Affairs
Cincinnati, Ohio

Effective: June 12, 2008
In accordance with Case No.
08-368-TP-ATA, Issued by the
Public Utilities Commission of Ohio
March 28, 2008

EXCHANGE SERVICES TARIFF
PUCO NO. 1

CINCINNATI BELL TELEPHONE COMPANY LLC

Section 3
Original Page 25

LOCAL EXCHANGE SERVICES

C. EXCHANGE AREAS (Continued)

11. Shandon Exchange

a. Local Service Area

1. Basic Local Calling Area

All exchanges in the Cincinnati Metropolitan Area Exchange Area as specified in Part B.4 of this section of the tariff and Embarq's Mason exchange.

2. Community Connection Service Calling Area

None

b. Basic Monthly Exchange Services

See schedule of rates for Rate Band 3 in Part D of this section.

c. Additional Telecommunications Service

All services offered by the Company in its tariffs will be provided where technically feasible and provisions are in place to provide such services

Issued: June 12, 2008

By: D. Scott Ringo, Jr., Assistant Secretary – Regulatory Affairs
Cincinnati, Ohio

Effective: June 12, 2008
In accordance with Case No.
08-368-TP-ATA, Issued by the
Public Utilities Commission of Ohio
March 28, 2008

EXCHANGE SERVICES TARIFF
PUCO NO. 1

CINCINNATI BELL TELEPHONE COMPANY LLC

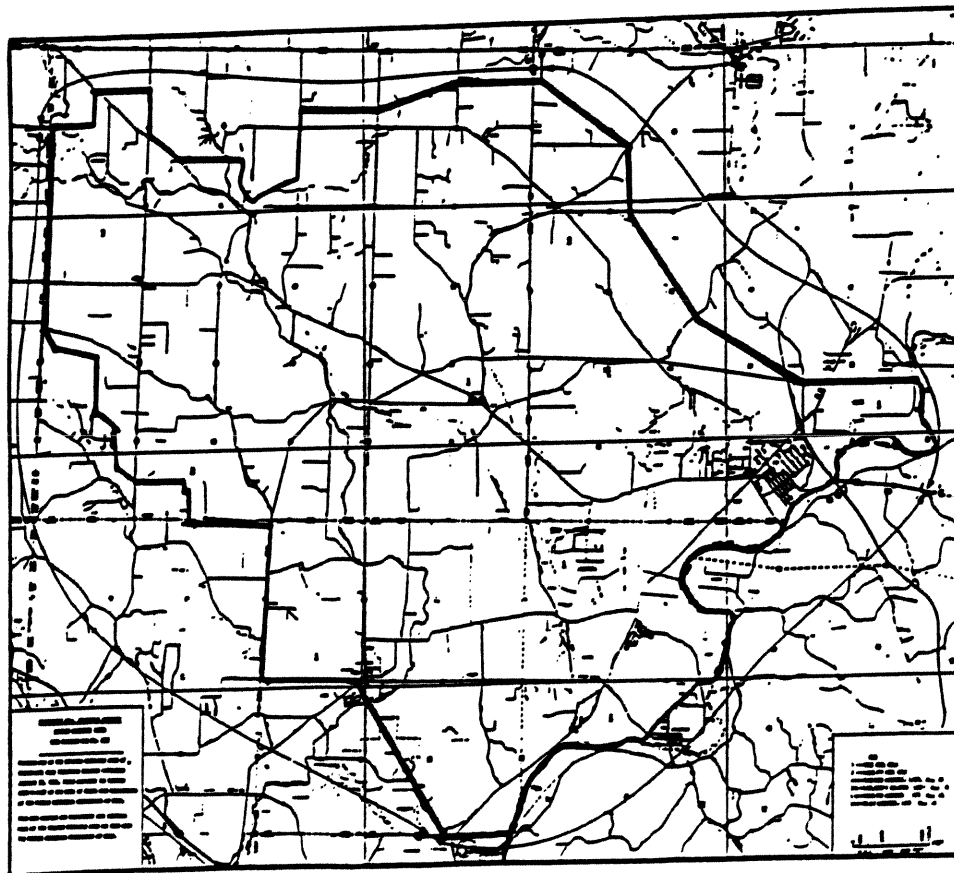
Section 3
Original Page 26

LOCAL EXCHANGE SERVICES

C. EXCHANGE AREAS (Continued)

11. Shandon Exchange (Continued)

d. Shandon Exchange Area Map



Issued: June 12, 2008

By: D. Scott Ringo, Jr., Assistant Secretary – Regulatory Affairs
Cincinnati, Ohio

Effective: June 12, 2008

In accordance with Case No.
08-368-TP-ATA, Issued by the
Public Utilities Commission of Ohio
March 28, 2008

EXCHANGE SERVICES TARIFF
PUCO NO. 1

CINCINNATI BELL TELEPHONE COMPANY LLC

Section 3
Original Page 27

LOCAL EXCHANGE SERVICES

C. EXCHANGE AREAS (Continued)

12. Williamsburg Exchange

a. Local Service Area

1. Basic Local Calling Area

All exchanges in the Cincinnati Metropolitan Area Exchange Area as specified in Part B.4 of this section of the tariff, Verizon North, Incorporated's Mt. Orab Exchange and Embark's Mason exchange.

2. Community Connection Service Calling Area

The Sardinia Exchange of Verizon North, Incorporated.

b. Basic Monthly Exchange Services

See schedule of rates for Rate Band 3 in Part D of this section.

Community Connection Service usage rates in Part G of this section apply in addition to the basic monthly exchange services.

c. Additional Telecommunications Service

All services offered by the Company in its tariffs will be provided where technically feasible and provisions are in place to provide such services.

Issued: June 12, 2008

By: D. Scott Ringo, Jr., Assistant Secretary – Regulatory Affairs
Cincinnati, Ohio

Effective: June 12, 2008
In accordance with Case No.
08-368-TP-ATA, Issued by the
Public Utilities Commission of Ohio
March 28, 2008

EXCHANGE SERVICES TARIFF
PUCO NO. 1

CINCINNATI BELL TELEPHONE COMPANY LLC

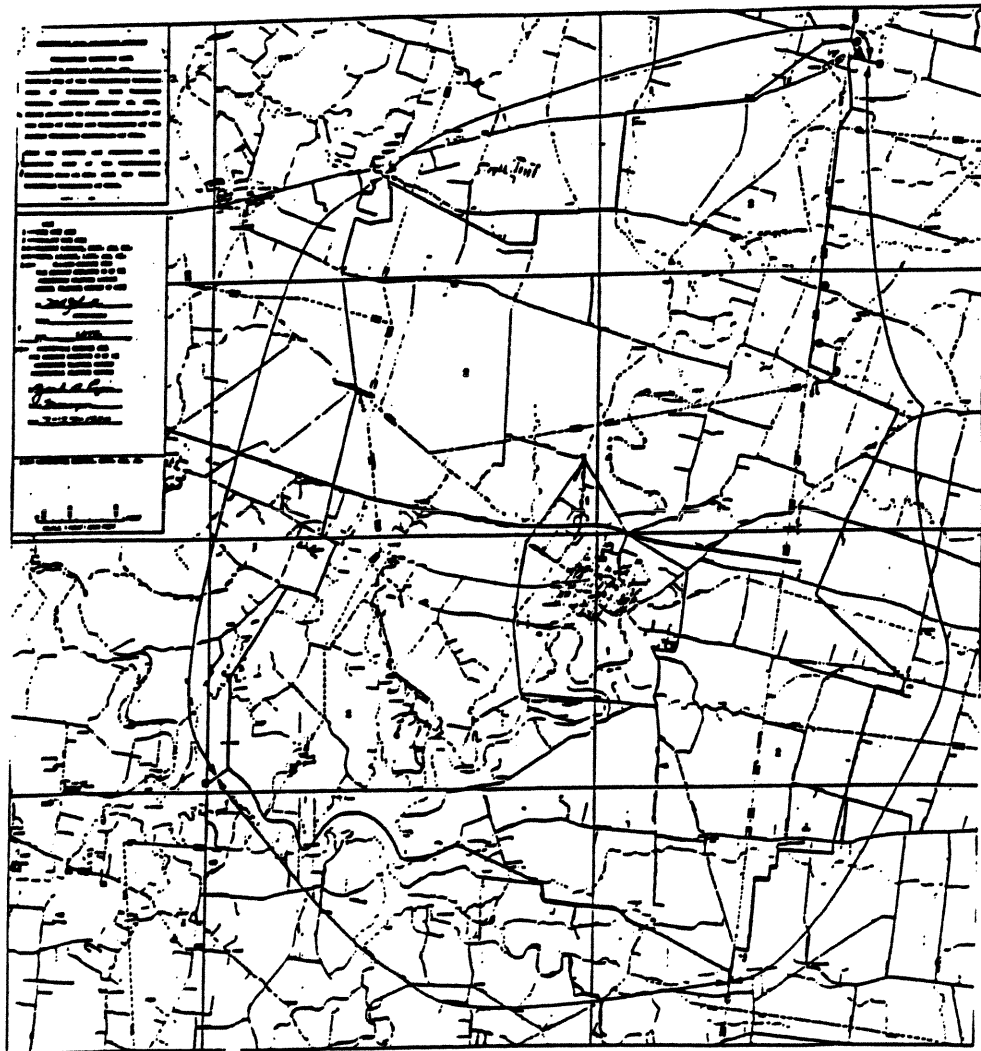
Section 3
Original Page 28

LOCAL EXCHANGE SERVICES

C. EXCHANGE AREAS (Continued)

12. Williamsburg Exchange (Continued)

d. Williamsburg Exchange Area Map



Issued: June 12, 2008

By: D. Scott Ringo, Jr., Assistant Secretary – Regulatory Affairs
Cincinnati, Ohio

Effective: June 12, 2008
In accordance with Case No.
08-368-TP-ATA, Issued by the
Public Utilities Commission of Ohio
March 28, 2008

This foregoing document was electronically filed with the Public Utilities

Commission of Ohio Docketing Information System on

6/12/2008 9:55:40 AM

in

Case No(s). 08-0368-TP-ATA, 90-5013-TP-TRF

Summary: Tariff File the final tariff pages associated with above referenced case number to detariff certain Tier 2 Services related to Case No. 06-1345-TP-ORD. (Part 2 of 7)
electronically filed by Evelyn W King on behalf of CINCINNATI BELL TELEPHONE COMPANY