

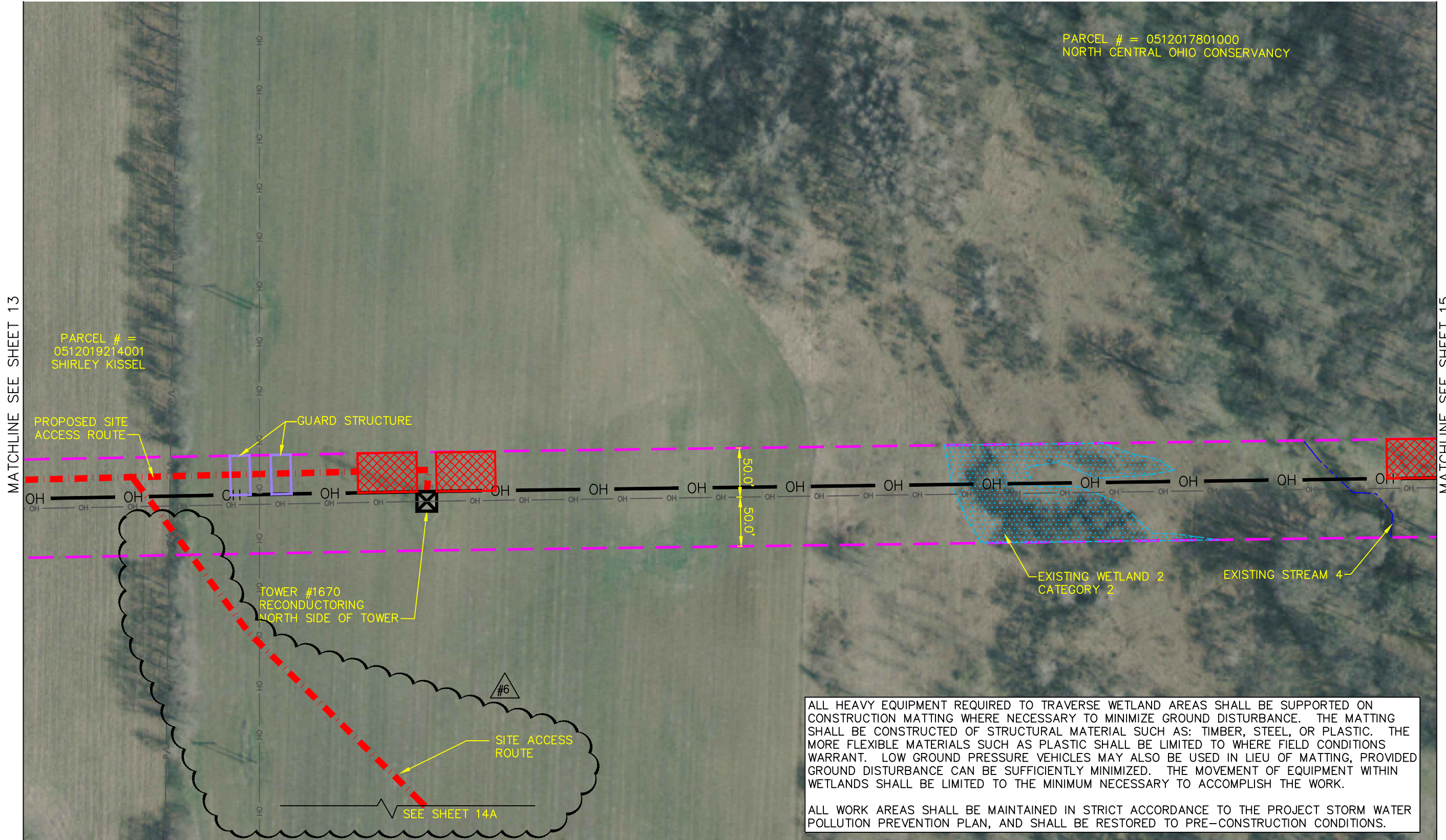
**LEGEND**

- C/L — STREET CENTERLINE
- R/W — STREET RIGHT OF WAY
- P/L — PROPERTY LINES
- OH — EXISTING POWER LINES
- — PROJECT STUDY LIMIT

- EXISTING WETLAND
- EXISTING STREAM C/L
- EXISTING FENCE
- UTILITY TOWERS
- PROPOSED SITE ACCESS ROUTE (BY VEHICLE)
- TIMBER MATTING WETLAND CROSSING

- 60'x200' PULL ZONE
- EXISTING ACCESS ROUTES
- OH — PROPOSED RECONDUCTORING ALIGNMENT
- PROPOSED SILT FENCE

- CRANE PAD
- GUARD STRUCTURE



ALL HEAVY EQUIPMENT REQUIRED TO TRAVERSE WETLAND AREAS SHALL BE SUPPORTED ON CONSTRUCTION MATTING WHERE NECESSARY TO MINIMIZE GROUND DISTURBANCE. THE MATTING SHALL BE CONSTRUCTED OF STRUCTURAL MATERIAL SUCH AS: TIMBER, STEEL, OR PLASTIC. THE MORE FLEXIBLE MATERIALS SUCH AS PLASTIC SHALL BE LIMITED TO WHERE FIELD CONDITIONS WARRANT. LOW GROUND PRESSURE VEHICLES MAY ALSO BE USED IN LIEU OF MATTING, PROVIDED GROUND DISTURBANCE CAN BE SUFFICIENTLY MINIMIZED. THE MOVEMENT OF EQUIPMENT WITHIN WETLANDS SHALL BE LIMITED TO THE MINIMUM NECESSARY TO ACCOMPLISH THE WORK.

ALL WORK AREAS SHALL BE MAINTAINED IN STRICT ACCORDANCE TO THE PROJECT STORM WATER POLLUTION PREVENTION PLAN, AND SHALL BE RESTORED TO PRE-CONSTRUCTION CONDITIONS.

MATCHLINE SEE SHEET 13

MATCHLINE SEE SHEET 15